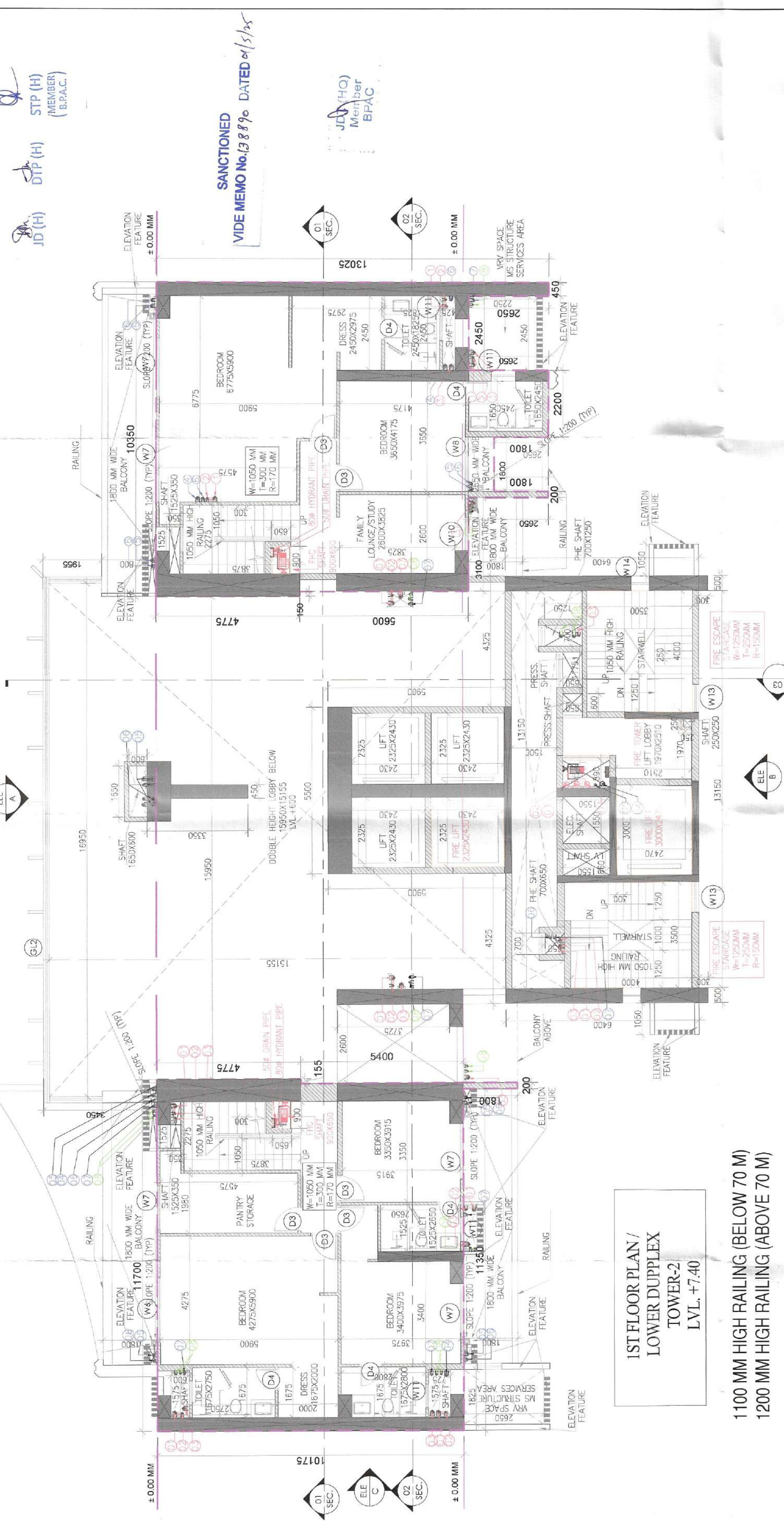


Sanctioned  
 VIDE MEMO No. 2779 DATED 15/11/24



IST FLOOR PLAN / LOWER DUPLEX TOWER-2 LVL. -7.40  
 1100 MM HIGH RAILING (BELOW 70 M)  
 1200 MM HIGH RAILING (ABOVE 70 M)

LEGEND

SL. NO.	SYMBOL	DESCRIPTION
1	1	100mm thick concrete slab (D/7)
2	2	100mm thick concrete slab (D/7)
3	3	100mm thick concrete slab (D/7)
4	4	100mm thick concrete slab (D/7)
5	5	100mm thick concrete slab (D/7)
6	6	100mm thick concrete slab (D/7)
7	7	100mm thick concrete slab (D/7)
8	8	100mm thick concrete slab (D/7)
9	9	100mm thick concrete slab (D/7)
10	10	100mm thick concrete slab (D/7)
11	11	100mm thick concrete slab (D/7)
12	12	100mm thick concrete slab (D/7)
13	13	100mm thick concrete slab (D/7)
14	14	100mm thick concrete slab (D/7)
15	15	100mm thick concrete slab (D/7)
16	16	100mm thick concrete slab (D/7)
17	17	100mm thick concrete slab (D/7)
18	18	100mm thick concrete slab (D/7)
19	19	100mm thick concrete slab (D/7)

NOTES:  
 1. DO POWER BACKUP IS BEING PROVIDED.  
 2. ALL LIFTS SHALL HAVE POWER BACK-UP.  
 3. ALL ELECTRICAL INSTALLATION SHALL BE AS PER  
 4. FIRE/FIGHTING SAFETY PROVISIONS WILL BE AS PER  
 5. RELEVANT CODE PROVISIONS.  
 6. BASEMENT AREA SHALL HAVE MECHANICALLY VENTILATED AS  
 7. ALL TOILETS ARE MECHANICALLY VENTILATED AS PER  
 8. BUILDING CODE 2017.  
 9. BUILDINGS HAS AUTOMATIC SPRINKLER SYSTEM WHEREVER  
 10. REQUIRED BY RELEVANT CODE PROVISIONS. JAS PER RELEVANT  
 11. LOCAL LAWS AND REGULATIONS. SOLAR PANELS OF REQUIRED  
 12. CAPACITY SHALL BE PROVIDED AS PER HARE DAYZOOMING  
 13. NORMS.  
 14. ALL HANDICAP RAMP WITH RAILING SHALL BE AS PER  
 15. PROVISION OF RELEVANT CODE.  
 16. THE RAINWATER HARVESTING SYSTEM SHALL BE PROVIDED AS  
 17. PER CENTRAL GROUND WATER AUTHORITY NORMS.

ASSOCIATE ARCHITECTS

EG ASSOCIATES

PLOT NO-40B SEC-37G, GURGRAM (PH. 0667979794)  
 (Internal Services only subject to permission in  
 forwarding letter No. US567.../2024/14)

PROJECT: SUPERINTENDING ENGINEER (R/O)  
 (R/SVP, PRACTICING)

PROPOSED BUILDING PLAN OF GH. SITE NO.21  
 IN SECTOR-53 GURGRAM OF AREA  
 MEASURING 3.60 ACRES BEING  
 DEVELOPED BY M/S GOODREJ PROPERTIES LTD.

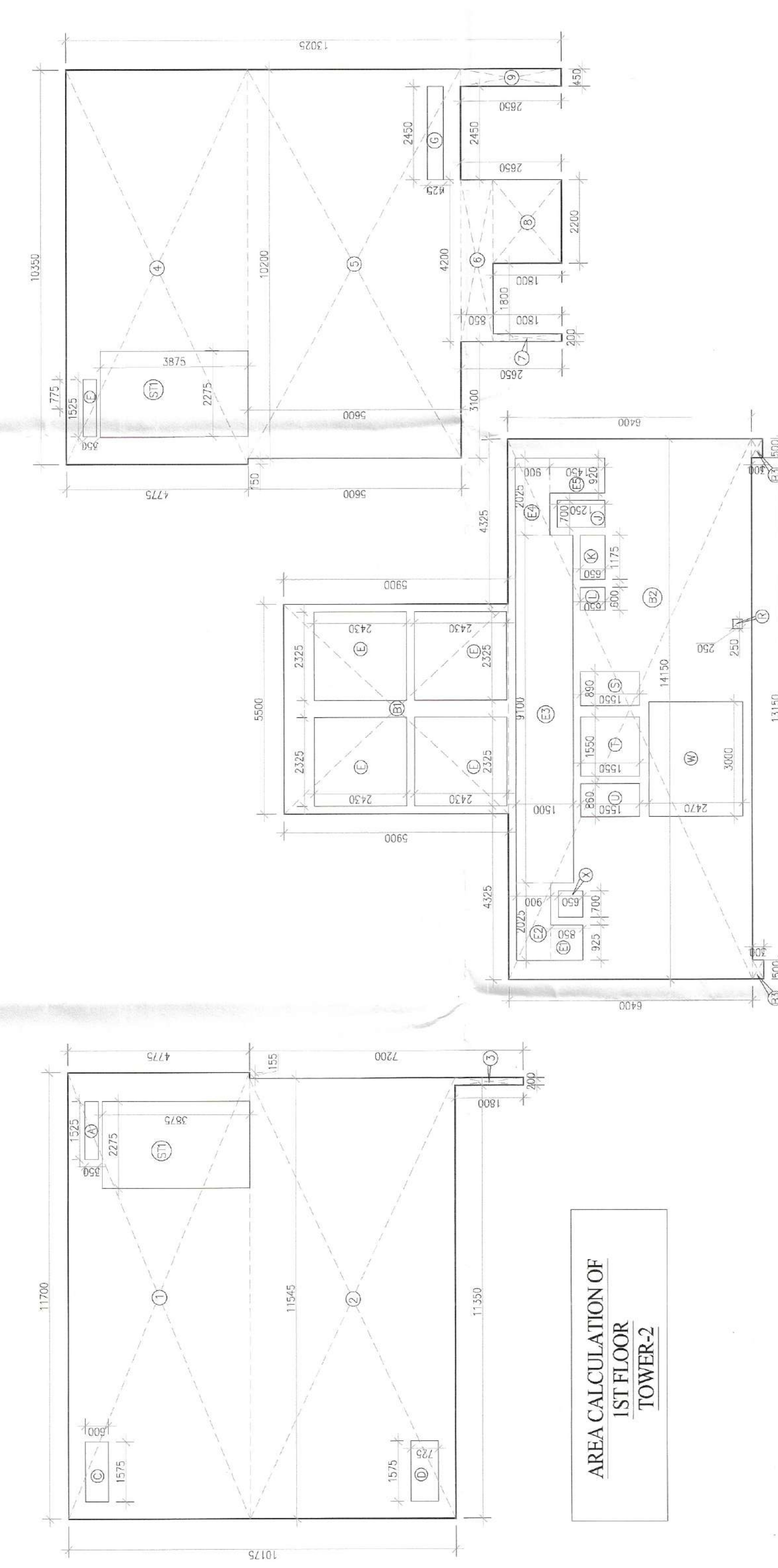
OWNER'S SEAL & SIGNATURE

GODREJ PROPERTIES LTD.  
 Authorized Signatory

ARCHITECT'S SEAL & SIGNATURE

A. Ravinder Kumar  
 CA2401255971

FEB. 2025 Scale : 1:100  
 Drawing Title: TOWER-2 FLOOR PLAN & AREA CALCULATION  
 Drawing No.: T2-01



AREA CALCULATION OF 1ST FLOOR TOWER-2

GROUP	NO.	DESCRIPTION	WIDTH	LENGTH	AREA (SQ.M)
GROUP-A	1	1	11.500	11.500	132.25
GROUP-A	2	2	11.500	11.500	132.25
GROUP-A	3	3	11.500	11.500	132.25
GROUP-A	4	4	11.500	11.500	132.25
GROUP-A	5	5	11.500	11.500	132.25
GROUP-A	6	6	11.500	11.500	132.25
GROUP-A	7	7	11.500	11.500	132.25
GROUP-A	8	8	11.500	11.500	132.25
GROUP-A	9	9	11.500	11.500	132.25
GROUP-A	10	10	11.500	11.500	132.25
GROUP-A	11	11	11.500	11.500	132.25
GROUP-A	12	12	11.500	11.500	132.25
GROUP-A	13	13	11.500	11.500	132.25
GROUP-A	14	14	11.500	11.500	132.25
GROUP-A	15	15	11.500	11.500	132.25
GROUP-A	16	16	11.500	11.500	132.25
GROUP-A	17	17	11.500	11.500	132.25
GROUP-A	18	18	11.500	11.500	132.25
GROUP-A	19	19	11.500	11.500	132.25
GROUP-A	20	20	11.500	11.500	132.25
GROUP-A	21	21	11.500	11.500	132.25
GROUP-A	22	22	11.500	11.500	132.25
GROUP-A	23	23	11.500	11.500	132.25
GROUP-A	24	24	11.500	11.500	132.25
GROUP-A	25	25	11.500	11.500	132.25
GROUP-A	26	26	11.500	11.500	132.25
GROUP-A	27	27	11.500	11.500	132.25
GROUP-A	28	28	11.500	11.500	132.25
GROUP-A	29	29	11.500	11.500	132.25
GROUP-A	30	30	11.500	11.500	132.25
GROUP-A	31	31	11.500	11.500	132.25
GROUP-A	32	32	11.500	11.500	132.25
GROUP-A	33	33	11.500	11.500	132.25
GROUP-A	34	34	11.500	11.500	132.25
GROUP-A	35	35	11.500	11.500	132.25
GROUP-A	36	36	11.500	11.500	132.25
GROUP-A	37	37	11.500	11.500	132.25
GROUP-A	38	38	11.500	11.500	132.25
GROUP-A	39	39	11.500	11.500	132.25
GROUP-A	40	40	11.500	11.500	132.25
GROUP-A	41	41	11.500	11.500	132.25
GROUP-A	42	42	11.500	11.500	132.25
GROUP-A	43	43	11.500	11.500	132.25
GROUP-A	44	44	11.500	11.500	132.25
GROUP-A	45	45	11.500	11.500	132.25
GROUP-A	46	46	11.500	11.500	132.25
GROUP-A	47	47	11.500	11.500	132.25
GROUP-A	48	48	11.500	11.500	132.25
GROUP-A	49	49	11.500	11.500	132.25
GROUP-A	50	50	11.500	11.500	132.25
GROUP-A	51	51	11.500	11.500	132.25
GROUP-A	52	52	11.500	11.500	132.25
GROUP-A	53	53	11.500	11.500	132.25
GROUP-A	54	54	11.500	11.500	132.25
GROUP-A	55	55	11.500	11.500	132.25
GROUP-A	56	56	11.500	11.500	132.25
GROUP-A	57	57	11.500	11.500	132.25
GROUP-A	58	58	11.500	11.500	132.25
GROUP-A	59	59	11.500	11.500	132.25
GROUP-A	60	60	11.500	11.500	132.25
GROUP-A	61	61	11.500	11.500	132.25
GROUP-A	62	62	11.500	11.500	132.25
GROUP-A	63	63	11.500	11.500	132.25
GROUP-A	64	64	11.500	11.500	132.25
GROUP-A	65	65	11.500	11.500	132.25
GROUP-A	66	66	11.500	11.500	132.25
GROUP-A	67	67	11.500	11.500	132.25
GROUP-A	68	68	11.500	11.500	132.25
GROUP-A	69	69	11.500	11.500	132.25
GROUP-A	70	70	11.500	11.500	132.25
GROUP-A	71	71	11.500	11.500	132.25
GROUP-A	72	72	11.500	11.500	132.25
GROUP-A	73	73	11.500	11.500	132.25
GROUP-A	74	74	11.500	11.500	132.25
GROUP-A	75	75	11.500	11.500	132.25
GROUP-A	76	76	11.500	11.500	132.25
GROUP-A	77	77	11.500	11.500	132.25
GROUP-A	78	78	11.500	11.500	132.25
GROUP-A	79	79	11.500	11.500	132.25
GROUP-A	80	80	11.500	11.500	132.25
GROUP-A	81	81	11.500	11.500	132.25
GROUP-A	82	82	11.500	11.500	132.25
GROUP-A	83	83	11.500	11.500	132.25
GROUP-A	84	84	11.500	11.500	132.25
GROUP-A	85	85	11.500	11.500	132.25
GROUP-A	86	86	11.500	11.500	132.25
GROUP-A	87	87	11.500	11.500	132.25
GROUP-A	88	88	11.500	11.500	132.25
GROUP-A	89	89	11.500	11.500	132.25
GROUP-A	90	90	11.500	11.500	132.25
GROUP-A	91	91	11.500	11.500	132.25
GROUP-A	92	92	11.500	11.500	132.25
GROUP-A	93	93	11.500	11.500	132.25
GROUP-A	94	94	11.500	11.500	132.25
GROUP-A	95	95	11.500	11.500	132.25
GROUP-A	96	96	11.500	11.500	132.25
GROUP-A	97	97	11.500	11.500	132.25
GROUP-A	98	98	11.500	11.500	132.25
GROUP-A	99	99	11.500	11.500	132.25
GROUP-A	100	100	11.500	11.500	132.25
GROUP-A	101	101	11.500	11.500	132.25
GROUP-A	102	102	11.500	11.500	132.25
GROUP-A	103	103	11.500	11.500	132.25
GROUP-A	104	104	11.500	11.500	132.25
GROUP-A	105	105	11.500	11.500	132.25
GROUP-A	106	106	11.500	11.500	132.25
GROUP-A	107	107	11.500	11.500	132.25
GROUP-A	108	108	11.500	11.500	132.25
GROUP-A	109	109	11.500	11.500	132.25
GROUP-A	110	110	11.500	11.500	132.25
GROUP-A	111	111	11.500	11.500	132.25
GROUP-A	112	112	11.500	11.500	132.25
GROUP-A	113	113	11.500	11.500	132.25
GROUP-A	114	114	11.500	11.500	132.25
GROUP-A	115	115	11.500	11.500	132.25
GROUP-A	116	116	11.500	11.500	132.25
GROUP-A	117	117	11.500	11.500	132.25
GROUP-A	118	118	11.500	11.500	132.25
GROUP-A	119	119	11.500	11.500	132.25
GROUP-A	120	120	11.500	11.500	132.25
GROUP-A	121	121	11.500	11.500	132.25
GROUP-A	122	122	11.500	11.500	132.25
GROUP-A	123	123	11.500	11.500	132.25
GROUP-A	124	124	11.500	11.500	132.25
GROUP-A	125	125	11.500	11.500	132.25
GROUP-A	126	126	11.500	11.500	132.25
GROUP-A	127	127	11.500	11.500	132.25
GROUP-A	128	128	11.500	11.500	132.25
GROUP-A	129	129	11.500	11.500	132.25
GROUP-A	130	130	11.500	11.500	132.25
GROUP-A	131	131	11.500	11.500	132.25
GROUP-A	132	132	11.500	11.500	132.25
GROUP-A	133	133	11.500	11.500	132.25
GROUP-A	134	134	11.500	11.500	132.25
GROUP-A	135	135	11.500	11.500	132.25
GROUP-A	136	136	11.500	11.500	132.25
GROUP-A	137	137	11.500	11.500	132.25
GROUP-A	138	138	11.500	11.500	132.25
GROUP-A	139	139	11.500	11.500	132.25
GROUP-A	140	140	11.500	11.500	132.25
GROUP-A	141	141	11.500	11.500	132.25
GROUP-A	142	142	11.500	11.500	132.25
GROUP-A	143	143	11.500	11.500	132.25
GROUP-A	144	144	11.500	11.500	132.25
GROUP-A	145	145	11.500	11.500	132.25
GROUP-A	146	146	11.500	11.500	132.25
GROUP-A	147	147	11.500	11.500	132.25
GROUP-A	148	148	11.500	11.500	132.25
GROUP-A	149	149	11.500	11.500	132.25
GROUP-A	150	150	11.500	11.500	132.25
GROUP-A	151	151	11.500	11.500	132.25
GROUP-A	152	152	11.500	11.500	132.25
GROUP-A	153	153	11.500	11.500	132.25
GROUP-A	154	154	11.500	11.500	132.25
GROUP-A	155	155	11.500	11.500	132.25
GROUP-A	156	156	11.500	11.500	132.25
GROUP-A	157	157	11.500	11.500	132.25
GROUP-A	158	158	11.500	11.500	132.25
GROUP-A	159	159	11.500	11.500	132.25
GROUP-A	160	160	11.500	11.500	132.25
GROUP-A	161	161	11.500	11.500	132.25
GROUP-A	162	162	11.500	11.500	132.25
GROUP-A	163	163	11.500	11.500	132.25
GROUP-A	164	164	11.500	11.500	132.25
GROUP-A	165	165	11.500	11.500	132.25
GROUP-A	166	166	11.500	11.500	132.25
GROUP-A	167	167	11.500	11.500	132.25
GROUP-A	168	168	11.500	11.500	132.25
GROUP-A	169	169	11.500	11.500	132.25
GROUP-A	170	170	11.500	11.500	132.25
GROUP-A	171	171	11.500	11.500	132.25
GROUP-A	172	172	11.500	11.500	132.25
GROUP-A	173	173	11.500	11.500	132.2