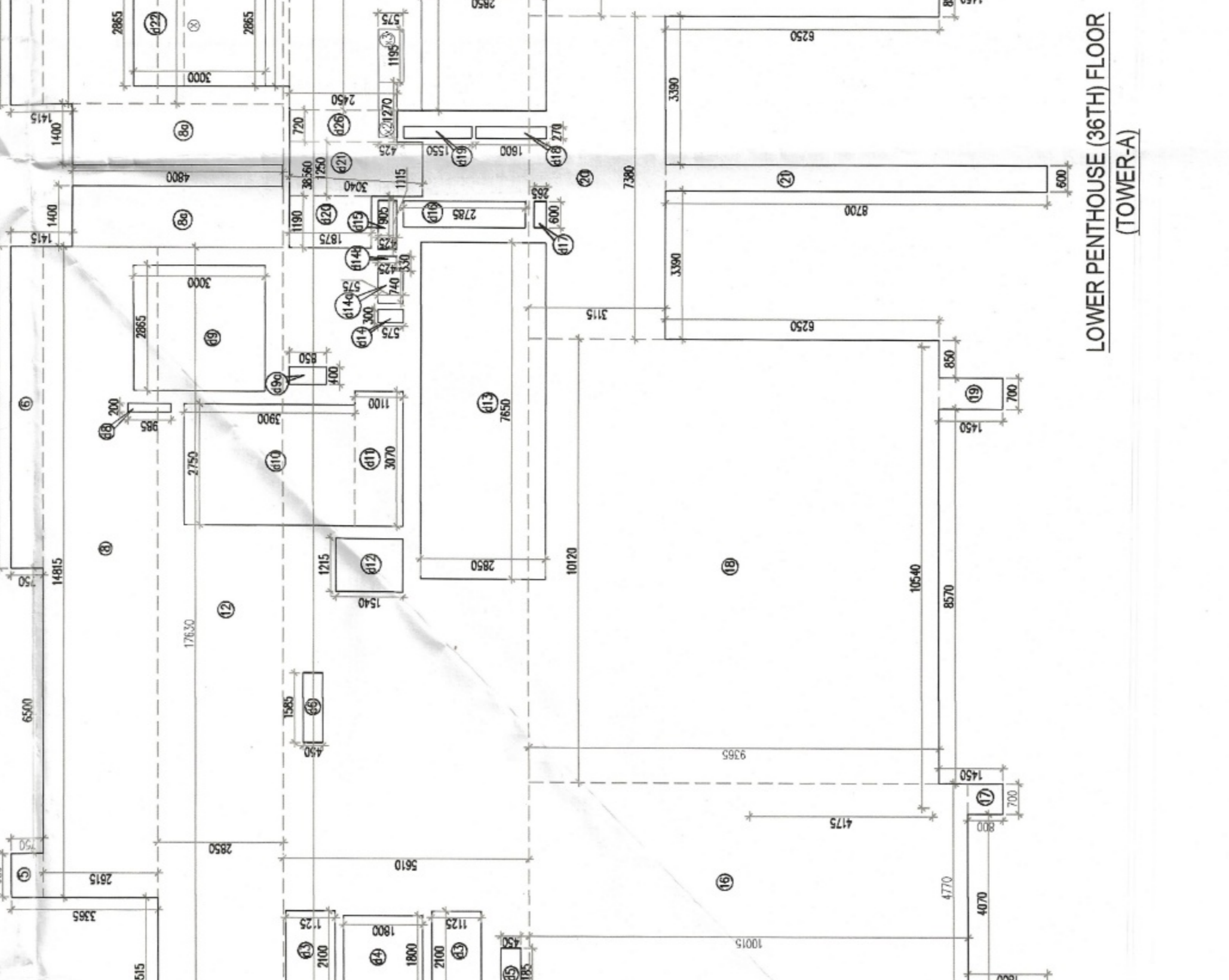
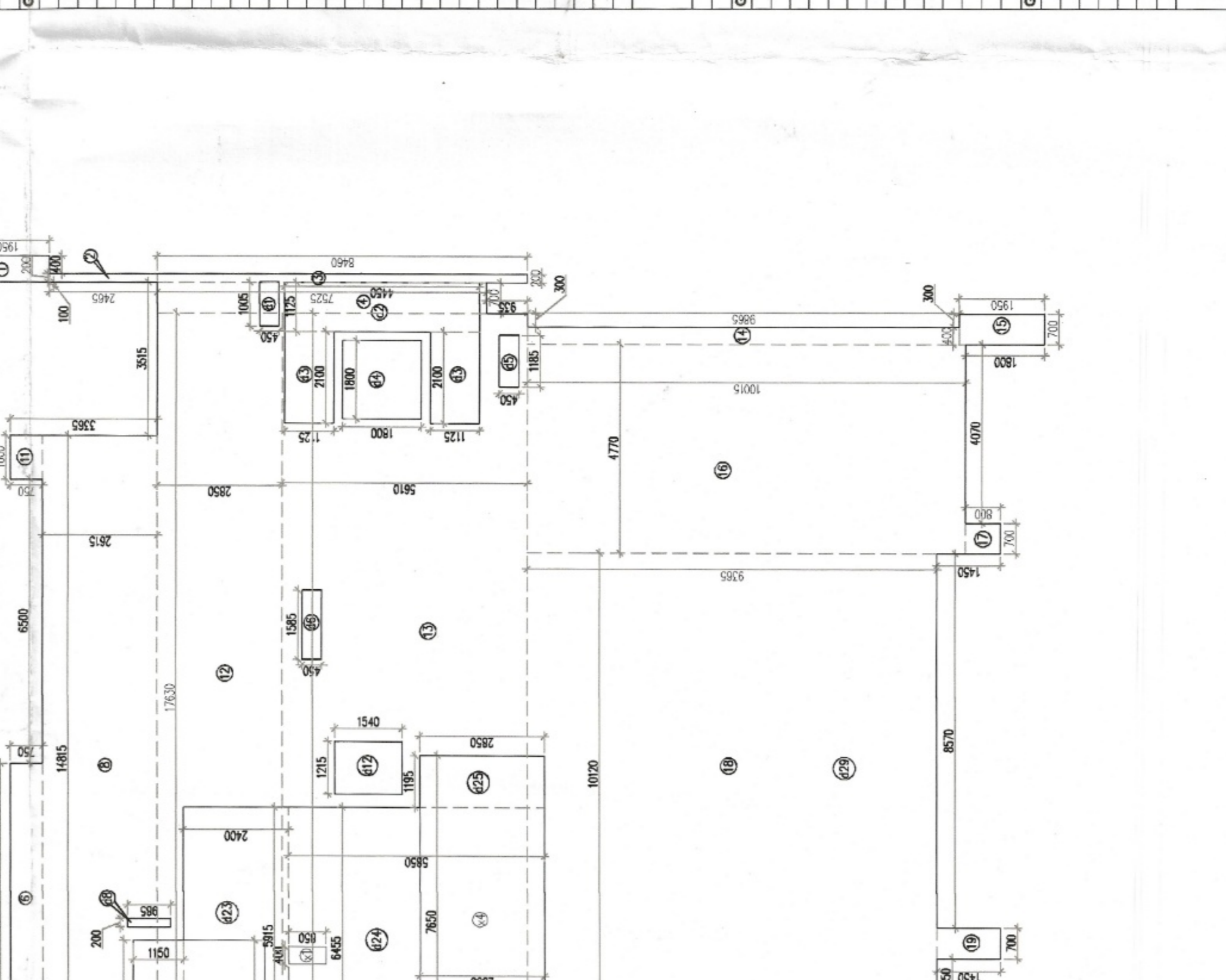
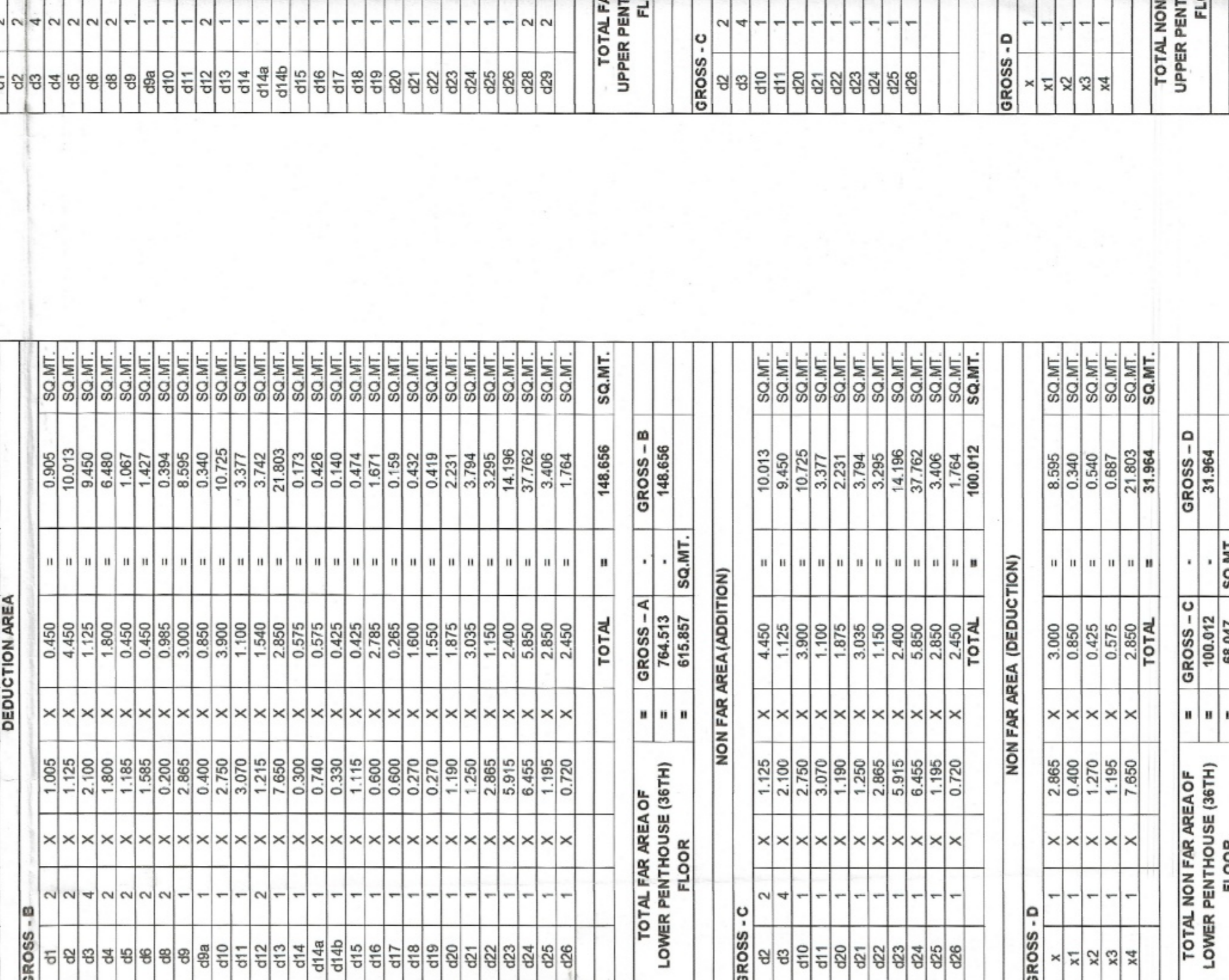
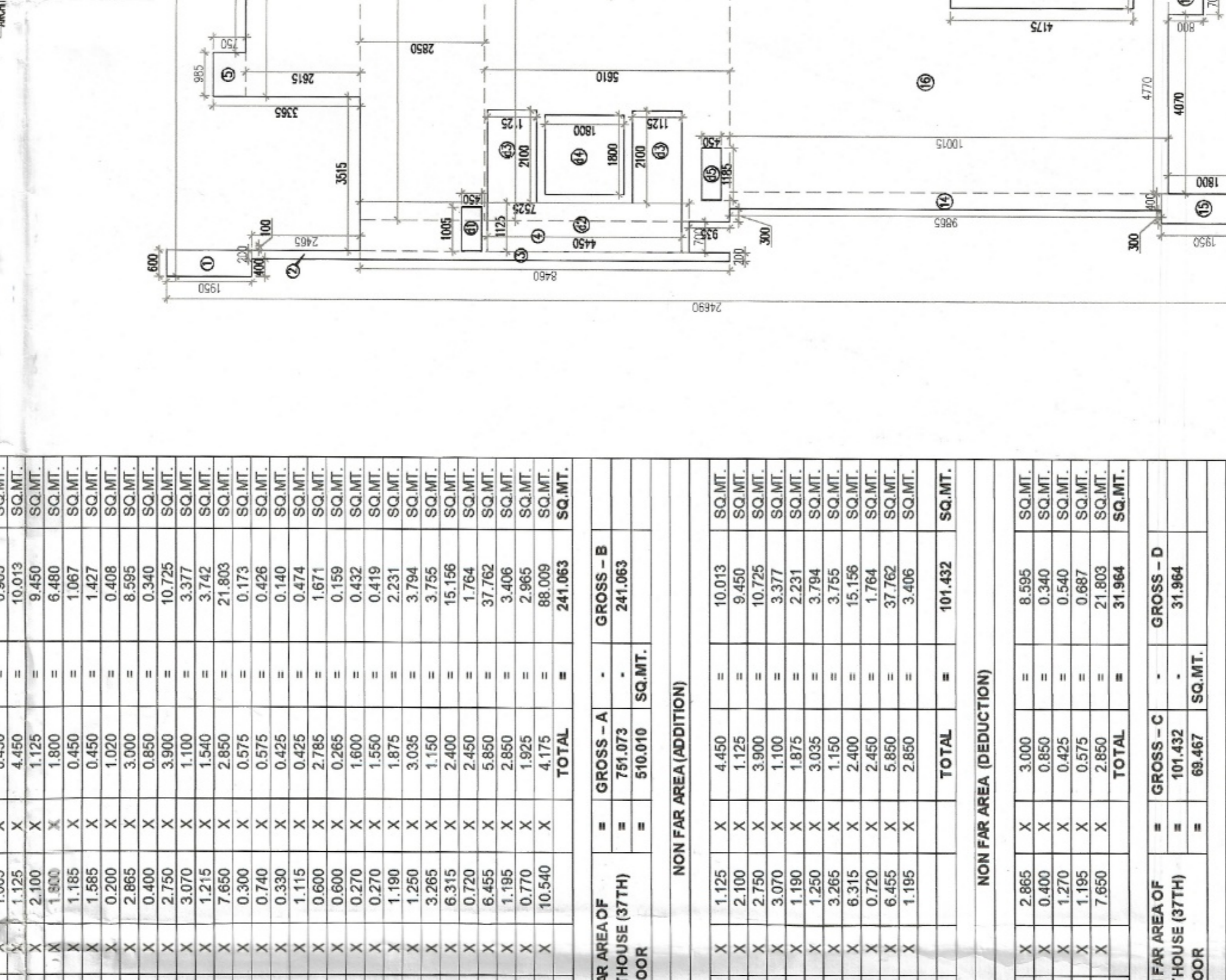
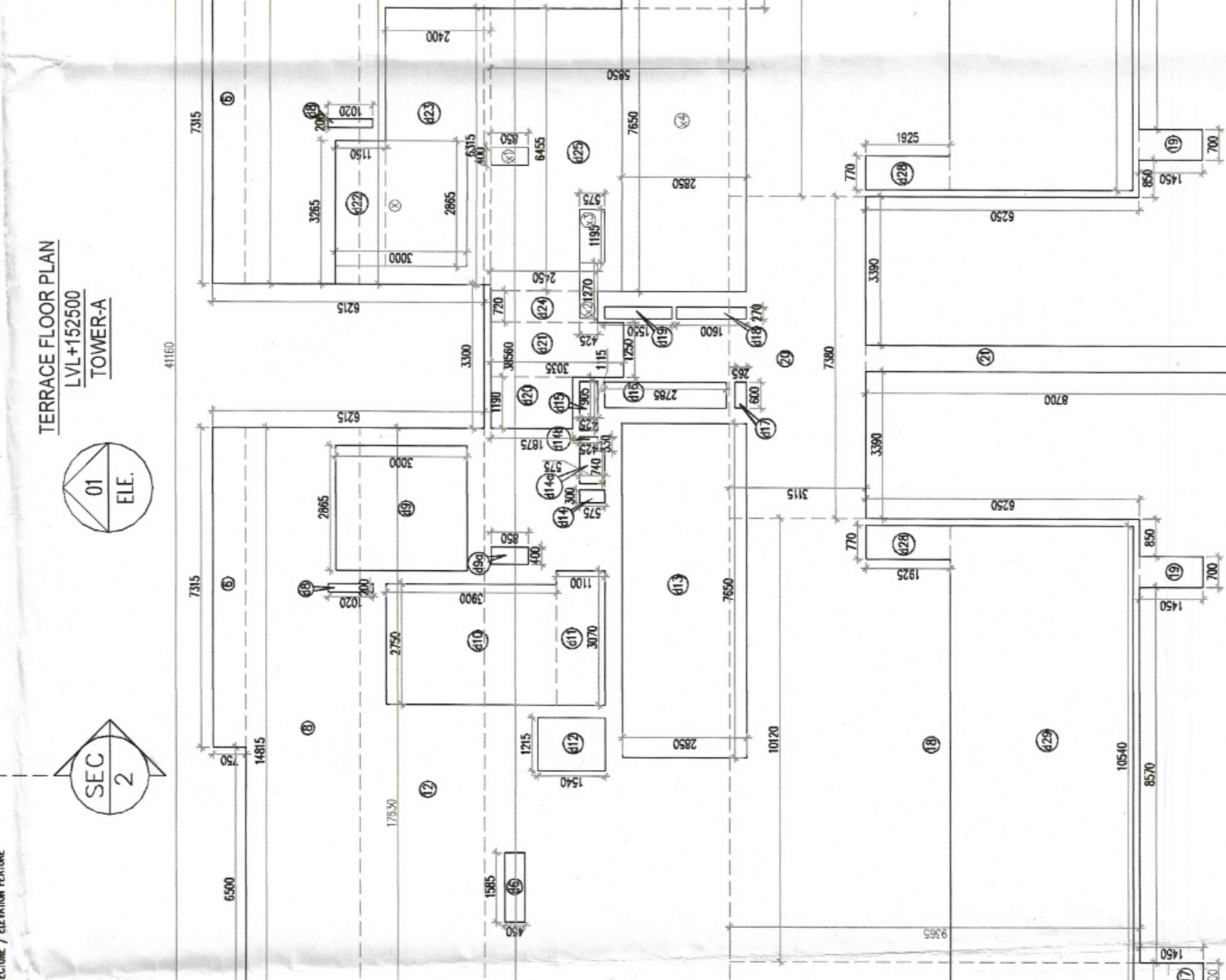
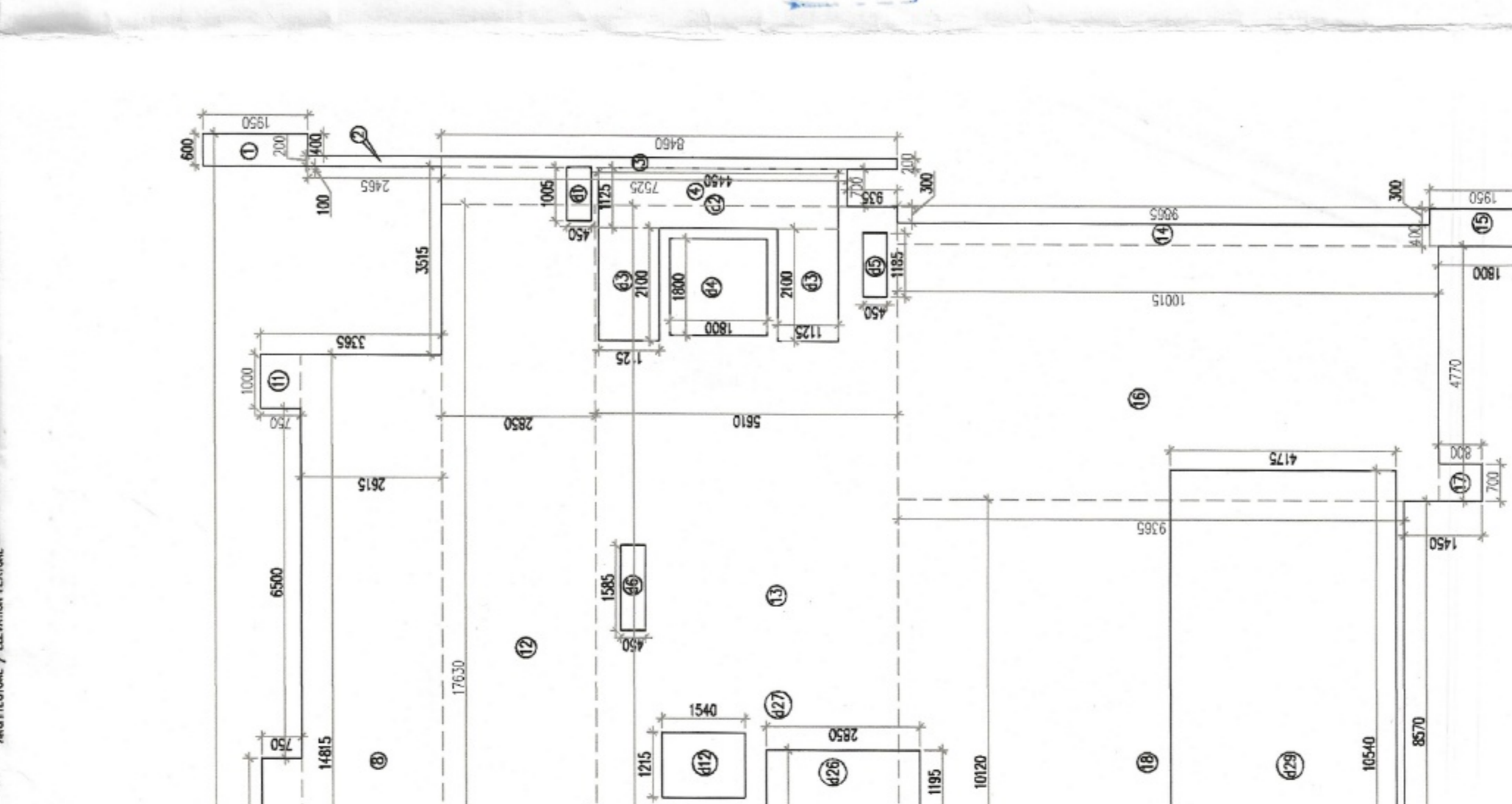
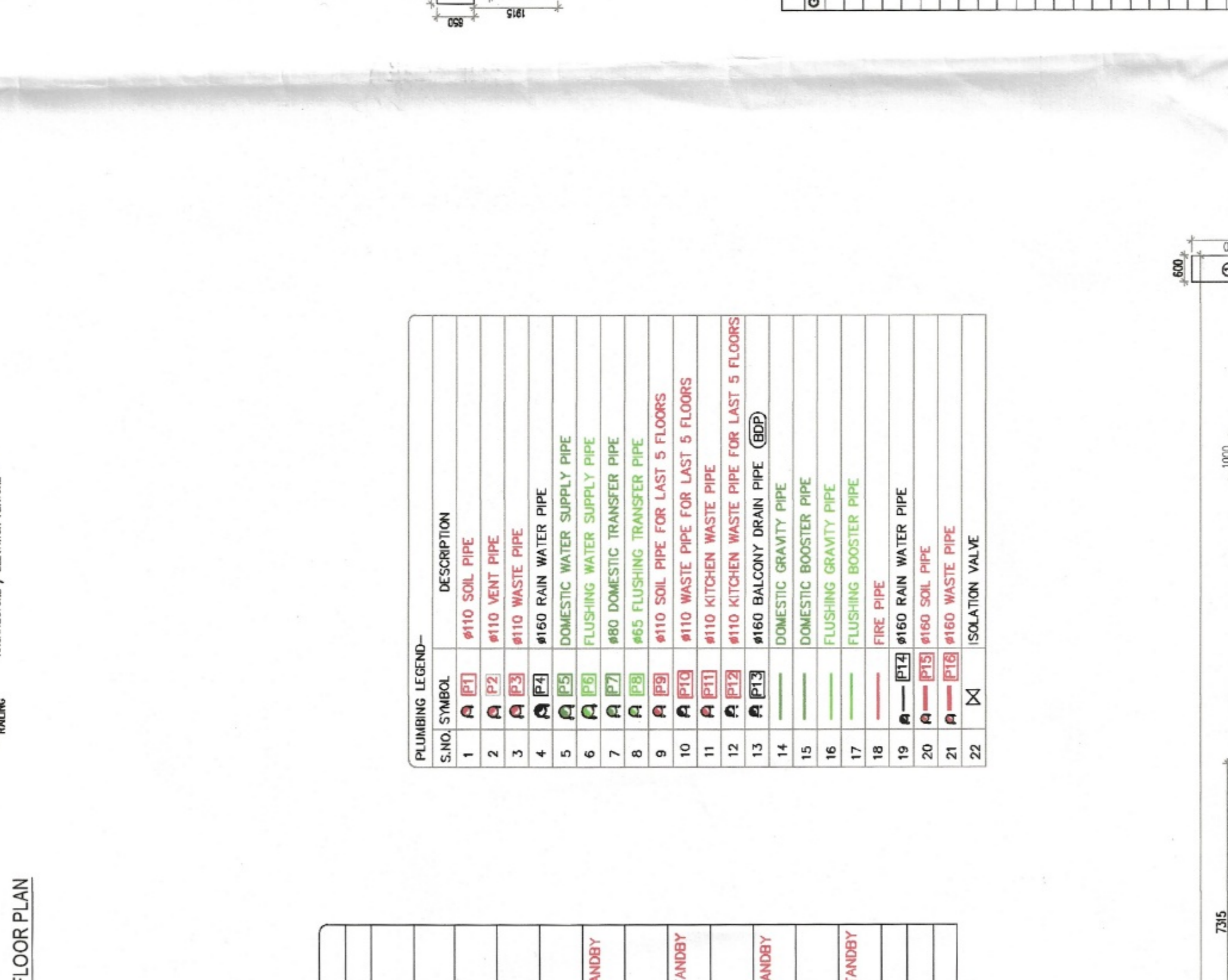
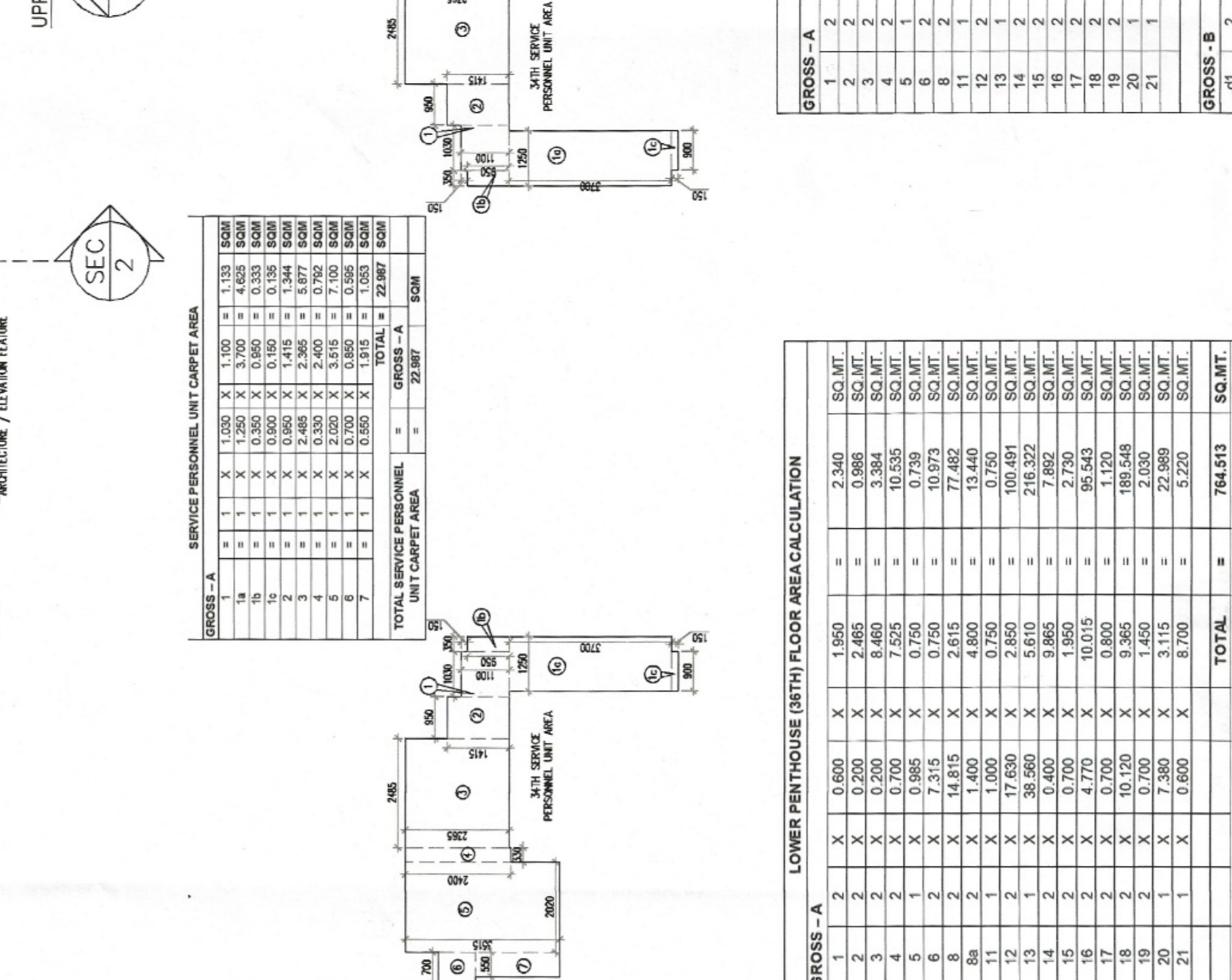
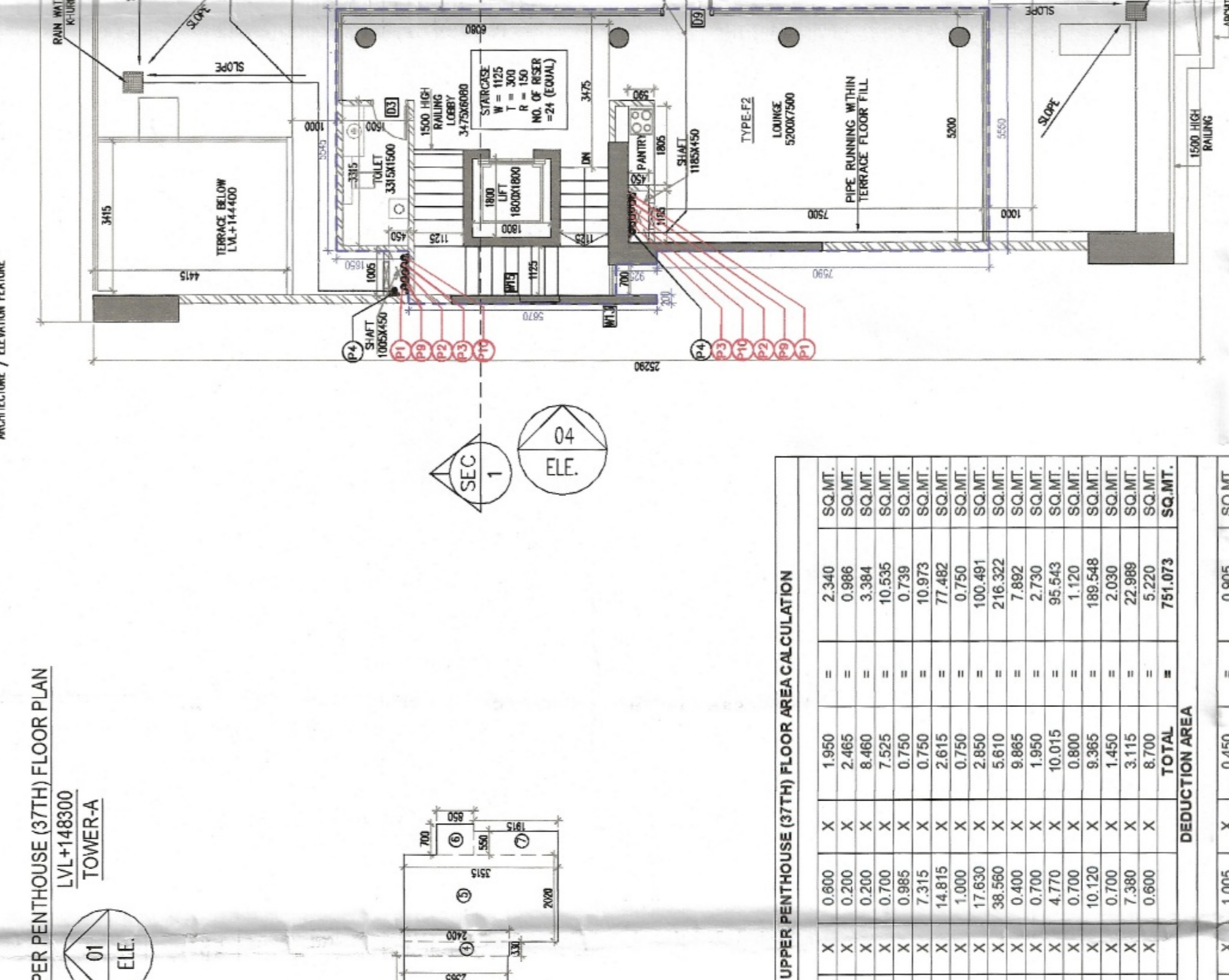
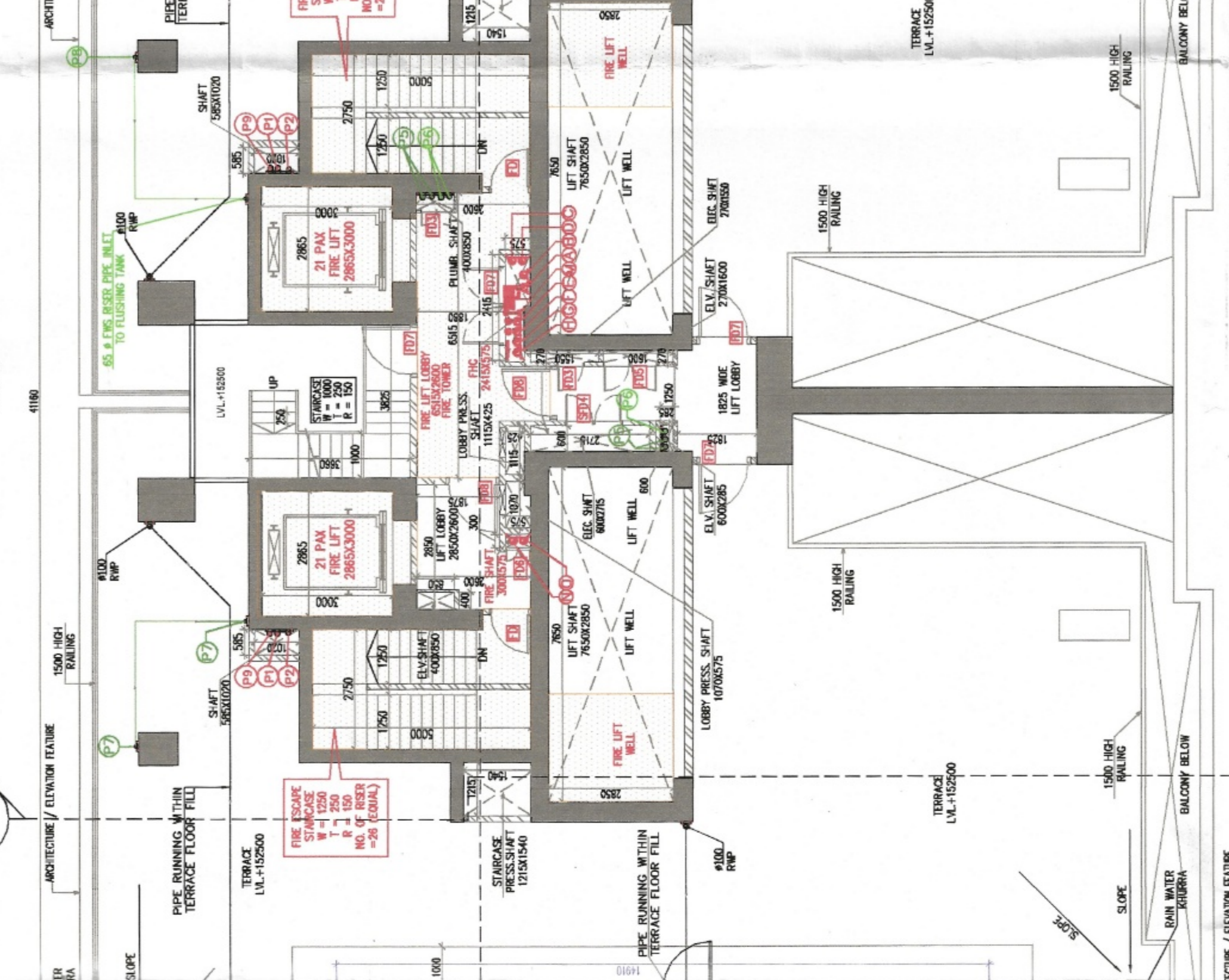
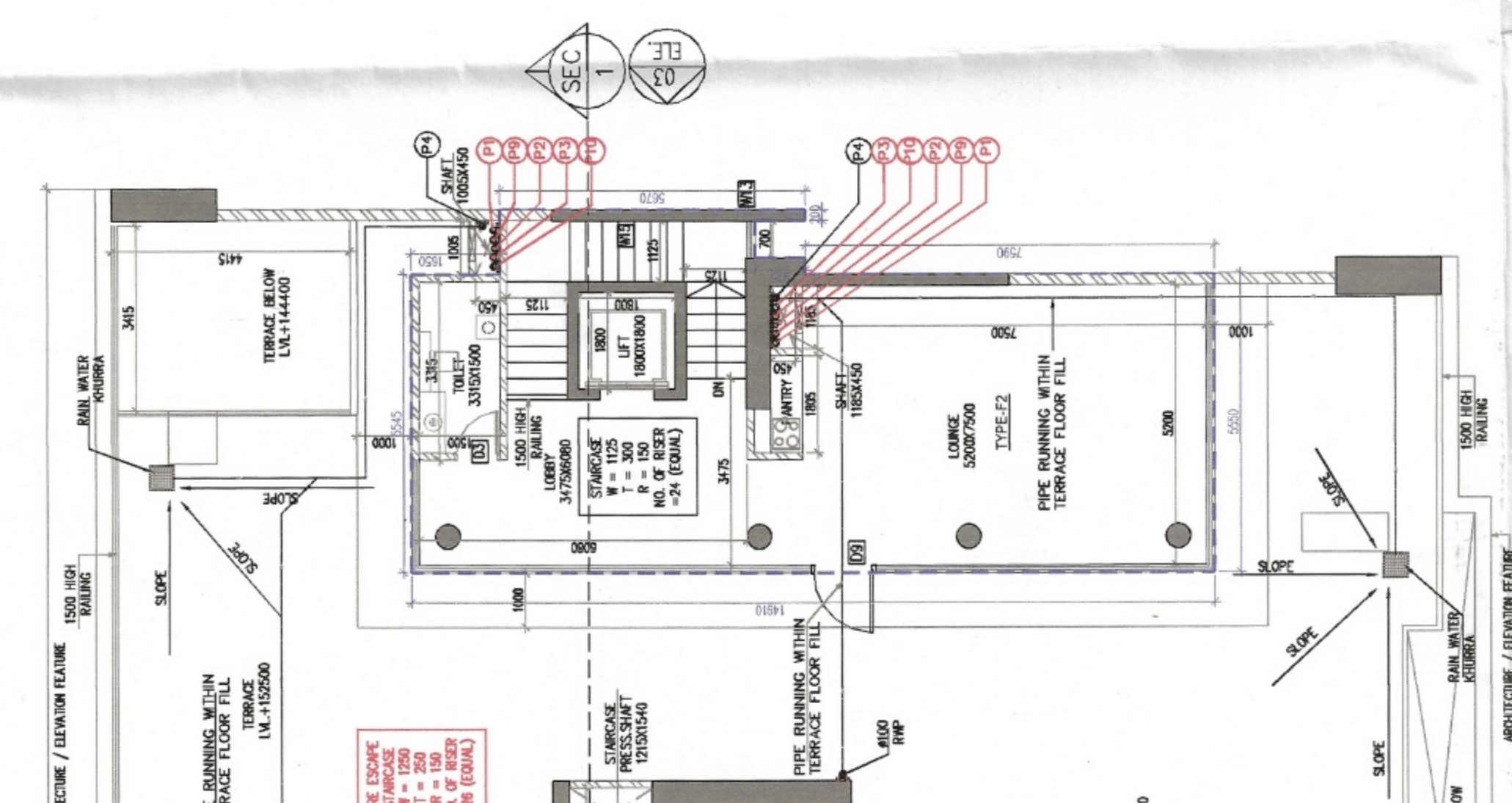
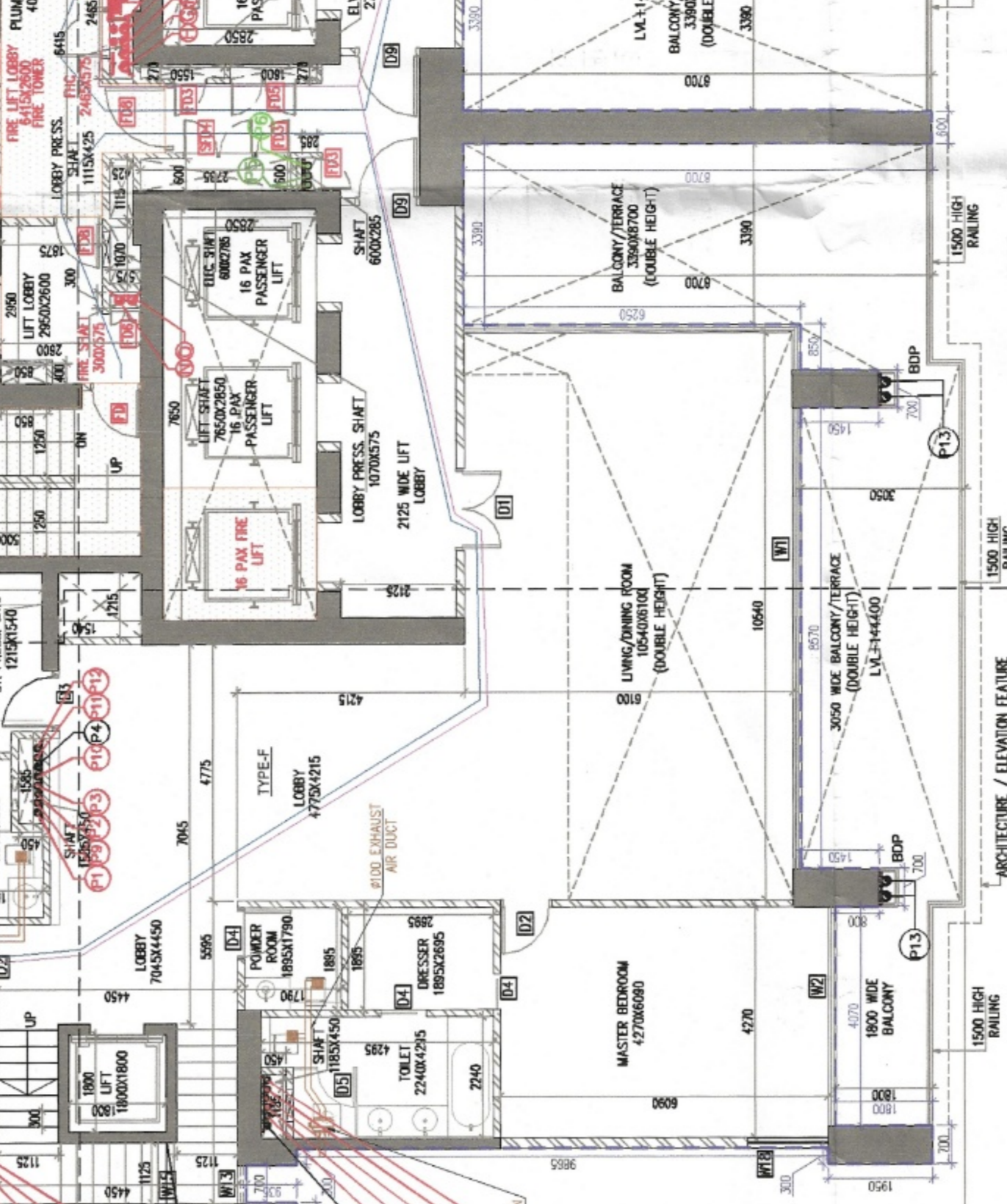
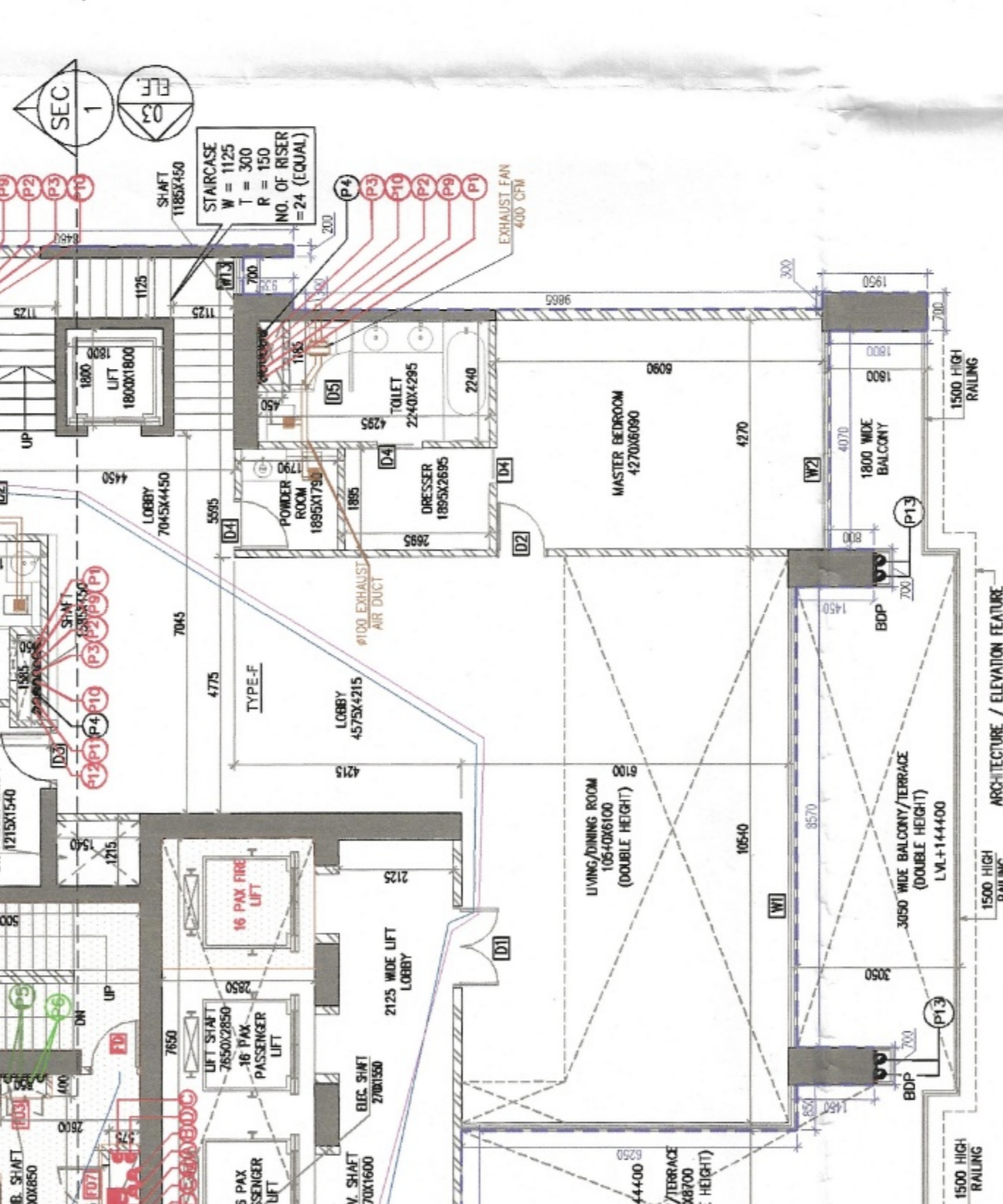
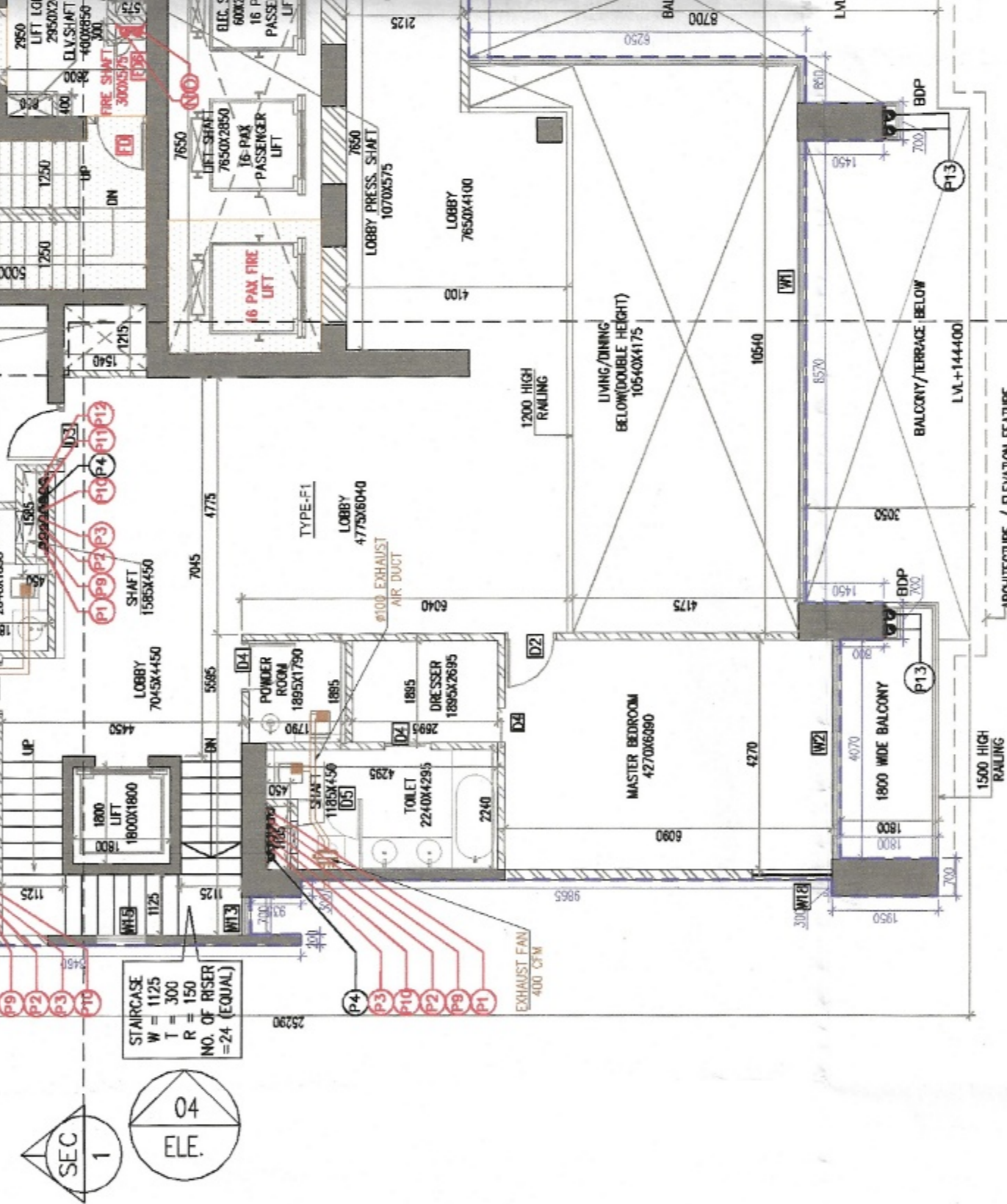
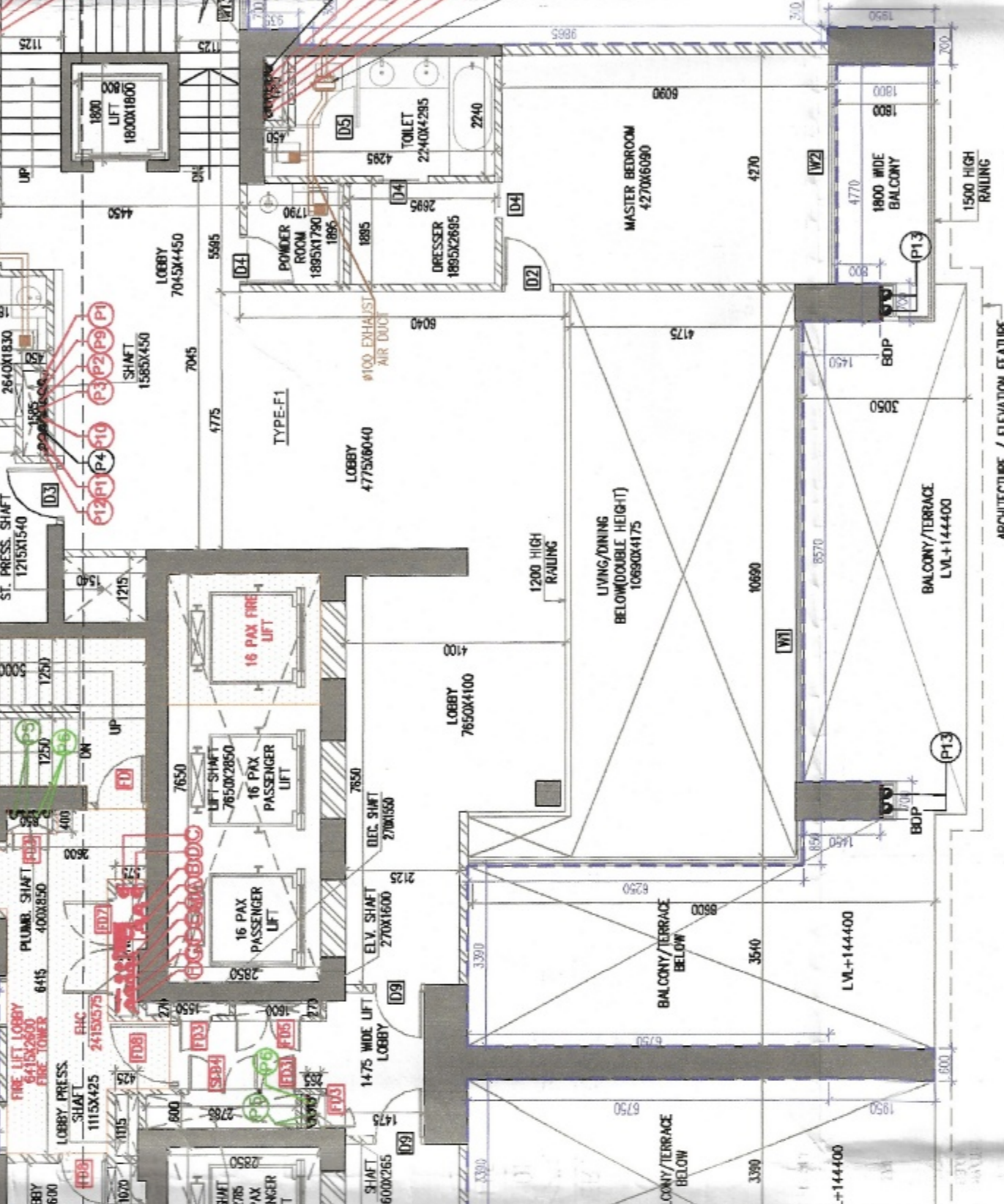
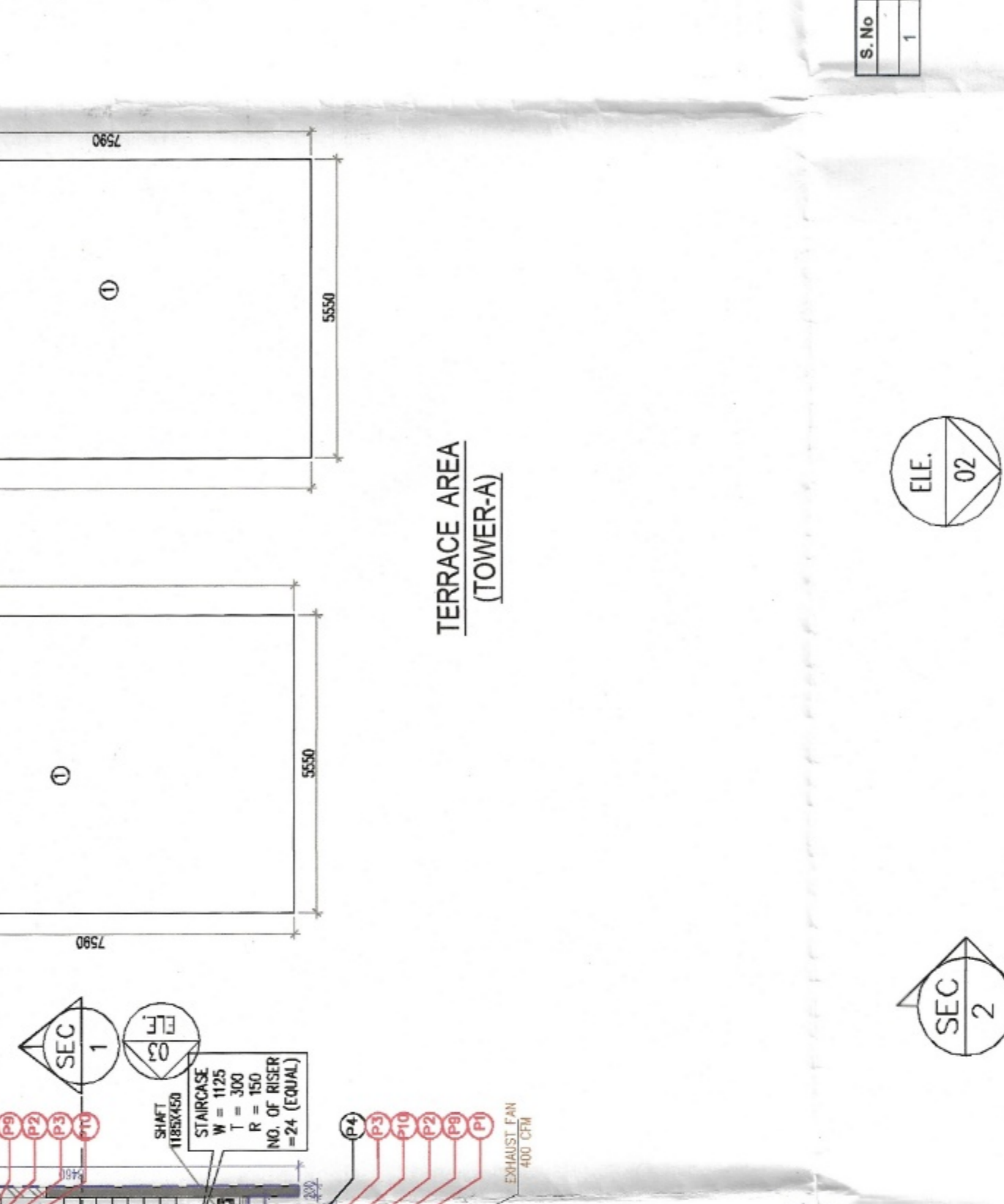
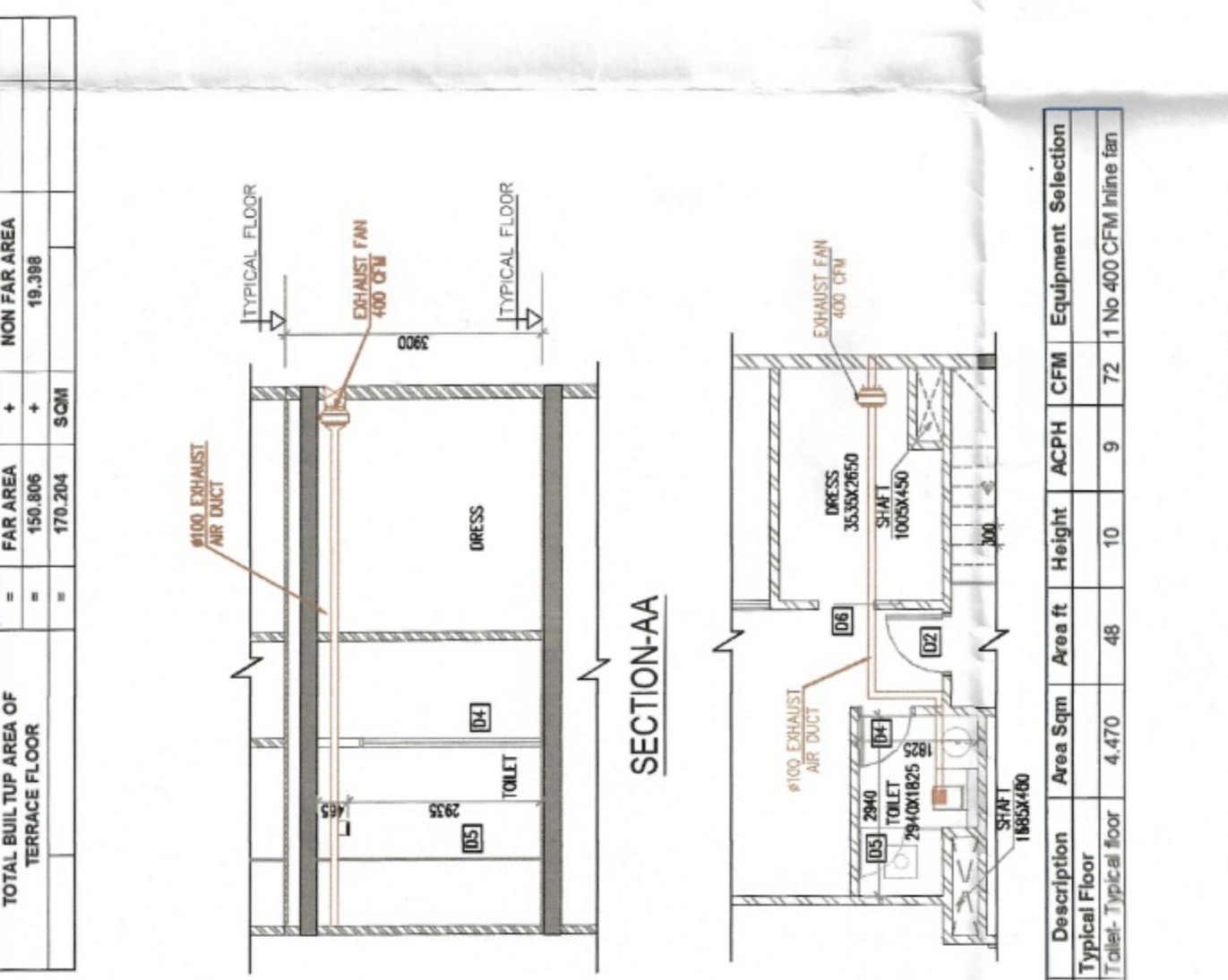


Note :-

- BUILDING HAS AUTOMATIC SPRINKLER SYSTEM WHEREVER REQUIRED BY NBC.
- BUILDING WILL BE DESIGNED (STRUCTURES) AS PER RELEVANT IS CODES FOR EARTH QUAKE RESISTANCE.
- ALL TOILET & KITCHEN HAVE PERMANENT VENTILATION / EXHAUST
- ALL BUILDINGS ARE NATURALLY VENTILATED WHERE EVER REQUIRED MEANS OF NATURAL VENTILATION IS PROVIDED WITH 100% POWER BACKUP.

TERACE FLOOR AREA CALCULATION	NO.	AREA (SQ.M)	NO.	AREA (SQ.M)	TOTAL
1	100	100	1	100	100
2	100	100	2	200	300
3	100	100	3	300	600
4	100	100	4	400	1000
5	100	100	5	500	1500
6	100	100	6	600	2100
7	100	100	7	700	2800
8	100	100	8	800	3600
9	100	100	9	900	4500
10	100	100	10	1000	5500
11	100	100	11	1100	6600
12	100	100	12	1200	7800
13	100	100	13	1300	9100
14	100	100	14	1400	10500
15	100	100	15	1500	12000
16	100	100	16	1600	13600
17	100	100	17	1700	15300
18	100	100	18	1800	17100
19	100	100	19	1900	19000
20	100	100	20	2000	21000
21	100	100	21	2100	23100
22	100	100	22	2200	25300
23	100	100	23	2300	27600
24	100	100	24	2400	30000
25	100	100	25	2500	32400
26	100	100	26	2600	34900
27	100	100	27	2700	37500
28	100	100	28	2800	40200
29	100	100	29	2900	43000
30	100	100	30	3000	45900
31	100	100	31	3100	48900
32	100	100	32	3200	52000
33	100	100	33	3300	55200
34	100	100	34	3400	58500
35	100	100	35	3500	61900
36	100	100	36	3600	65400
37	100	100	37	3700	69000
38	100	100	38	3800	72700
39	100	100	39	3900	76500
40	100	100	40	4000	80400
41	100	100	41	4100	84400
42	100	100	42	4200	88500
43	100	100	43	4300	92700
44	100	100	44	4400	97000
45	100	100	45	4500	101400
46	100	100	46	4600	105900
47	100	100	47	4700	110500
48	100	100	48	4800	115200
49	100	100	49	4900	120000
50	100	100	50	5000	124900
51	100	100	51	5100	129900
52	100	100	52	5200	135000
53	100	100	53	5300	140200
54	100	100	54	5400	145500
55	100	100	55	5500	150900
56	100	100	56	5600	156400
57	100	100	57	5700	162000
58	100	100	58	5800	167700
59	100	100	59	5900	173500
60	100	100	60	6000	179400
61	100	100	61	6100	185400
62	100	100	62	6200	191500
63	100	100	63	6300	197700
64	100	100	64	6400	204000
65	100	100	65	6500	210400
66	100	100	66	6600	216900
67	100	100	67	6700	223500
68	100	100	68	6800	230200
69	100	100	69	6900	237000
70	100	100	70	7000	243900
71	100	100	71	7100	250900
72	100	100	72	7200	258000
73	100	100	73	7300	265200
74	100	100	74	7400	272500
75	100	100	75	7500	280000
76	100	100	76	7600	287600
77	100	100	77	7700	295300
78	100	100	78	7800	303100
79	100	100	79	7900	311000
80	100	100	80	8000	319000
81	100	100	81	8100	327100
82	100	100	82	8200	335300
83	100	100	83	8300	343600
84	100	100	84	8400	352000
85	100	100	85	8500	360500
86	100	100	86	8600	369100
87	100	100	87	8700	377800
88	100	100	88	8800	386600
89	100	100	89	8900	395500
90	100	100	90	9000	404500
91	100	100	91	9100	413600
92	100	100	92	9200	422800
93	100	100	93	9300	432100
94	100	100	94	9400	441500
95	100	100	95	9500	451000
96	100	100	96	9600	460600
97	100	100	97	9700	470300
98	100	100	98	9800	480100
99	100	100	99	9900	490000
100	100	100	100	10000	500000



UPPER PENTHOUSE (37TH FLOOR) AREA CALCULATION

NO.	DESCRIPTION	AREA (SQ.M)
1	1. BALCONY	1.500
2	2. TERRACE	2.500
3	3. BALCONY	1.500
4	4. TERRACE	2.500
5	5. BALCONY	1.500
6	6. TERRACE	2.500
7	7. BALCONY	1.500
8	8. TERRACE	2.500
9	9. BALCONY	1.500
10	10. TERRACE	2.500
11	11. BALCONY	1.500
12	12. TERRACE	2.500
13	13. BALCONY	1.500
14	14. TERRACE	2.500
15	15. BALCONY	1.500
16	16. TERRACE	2.500
17	17. BALCONY	1.500
18	18. TERRACE	2.500
19	19. BALCONY	1.500
20	20. TERRACE	2.500
21	21. BALCONY	1.500
22	22. TERRACE	2.500
23	23. BALCONY	1.500
24	24. TERRACE	2.500
25	25. BALCONY	1.500
26	26. TERRACE	2.500
27	27. BALCONY	1.500
28	28. TERRACE	2.500
29	29. BALCONY	1.500
30	30. TERRACE	2.500
31	31. BALCONY	1.500
32	32. TERRACE	2.500
33	33. BALCONY	1.500
34	34. TERRACE	2.500
35	35. BALCONY	1.500
36	36. TERRACE	2.500
37	37. BALCONY	1.500
38	38. TERRACE	2.500
39	39. BALCONY	1.500
40	40. TERRACE	2.500
41	41. BALCONY	1.500
42	42. TERRACE	2.500
43	43. BALCONY	1.500
44	44. TERRACE	2.500
45	45. BALCONY	1.500
46	46. TERRACE	2.500
47	47. BALCONY	1.500
48	48. TERRACE	2.500
49	49. BALCONY	1.500
50	50. TERRACE	2.500
51	51. BALCONY	1.500
52	52. TERRACE	2.500
53	53. BALCONY	1.500
54	54. TERRACE	2.500
55	55. BALCONY	1.500
56	56. TERRACE	2.500
57	57. BALCONY	1.500
58	58. TERRACE	2.500
59	59. BALCONY	1.500
60	60. TERRACE	2.500
61	61. BALCONY	1.500
62	62. TERRACE	2.500
63	63. BALCONY	1.500
64	64. TERRACE	2.500
65	65. BALCONY	1.500
66	66. TERRACE	2.500
67	67. BALCONY	1.500
68	68. TERRACE	2.500
69	69. BALCONY	1.500
70	70. TERRACE	2.500
71	71. BALCONY	1.500
72	72. TERRACE	2.500
73	73. BALCONY	1.500
74	74. TERRACE	2.500
75	75. BALCONY	1.500
76	76. TERRACE	2.500
77	77. BALCONY	1.500
78	78. TERRACE	2.500
79	79. BALCONY	1.500
80	80. TERRACE	2.500
81	81. BALCONY	1.500
82	82. TERRACE	2.500
83	83. BALCONY	1.500
84	84. TERRACE	2.500
85	85. BALCONY	1.500
86	86. TERRACE	2.500
87	87. BALCONY	1.500
88	88. TERRACE	2.500
89	89. BALCONY	1.500
90	90. TERRACE	2.500
91	91. BALCONY	1.500
92	92. TERRACE	2.500
93	93. BALCONY	1.500
94	94. TERRACE	2.500
95	95. BALCONY	1.500
96	96. TERRACE	2.500
97	97. BALCONY	1.500
98	98. TERRACE	2.500
99	99. BALCONY	1.500
100	100. TERRACE	2.500
TOTAL	TOTAL	791.873

LOWER PENTHOUSE (36TH FLOOR) AREA CALCULATION

NO.	DESCRIPTION	AREA (SQ.M)
1	1. BALCONY	1.500
2	2. TERRACE	2.500
3	3. BALCONY	1.500
4	4. TERRACE	2.500
5	5. BALCONY	1.500
6	6. TERRACE	2.500
7	7. BALCONY	1.500
8	8. TERRACE	2.500
9	9. BALCONY	1.500
10	10. TERRACE	2.500
11	11. BALCONY	1.500
12	12. TERRACE	2.500
13	13. BALCONY	1.500
14	14. TERRACE	2.500
15	15. BALCONY	1.500
16	16. TERRACE	2.500
17	17. BALCONY	1.500
18	18. TERRACE	2.500
19	19. BALCONY	1.500
20	20. TERRACE	2.500
21	21. BALCONY	1.500
22	22. TERRACE	2.500
23	23. BALCONY	1.500
24	24. TERRACE	2.500
25	25. BALCONY	1.500
26	26. TERRACE	2.500
27	27. BALCONY	1.500
28	28. TERRACE	2.500
29	29. BALCONY	1.500
30	30. TERRACE	2.500
31	31. BALCONY	1.500
32	32. TERRACE	2.500
33	33. BALCONY	1.500
34	34. TERRACE	2.500
35	35. BALCONY	1.500
36	36. TERRACE	2.500
37	37. BALCONY	1.500
38	38. TERRACE	2.500
39	39. BALCONY	1.500
40	40. TERRACE	2.500
41	41. BALCONY	1.500
42	42. TERRACE	2.500
43	43. BALCONY	1.500
44		