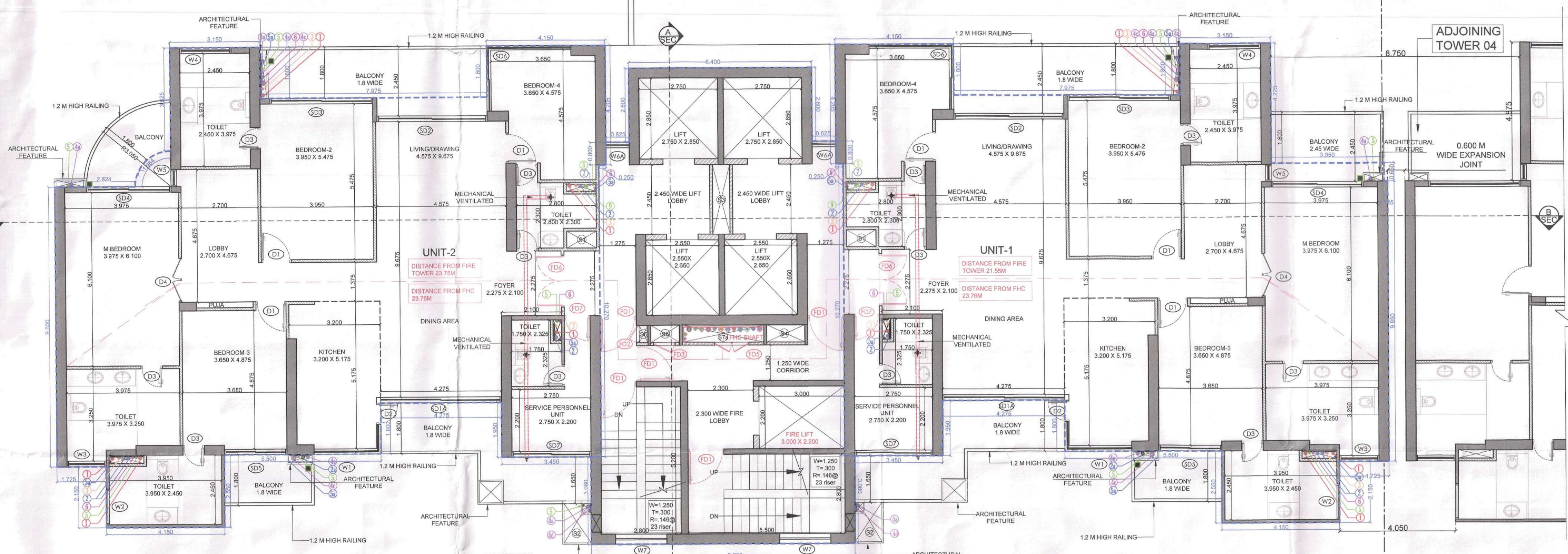


COMMUNITY TERRACE
F.F.L.=12.300M

1.2M HIGH PARAPET

ELEVATION 1

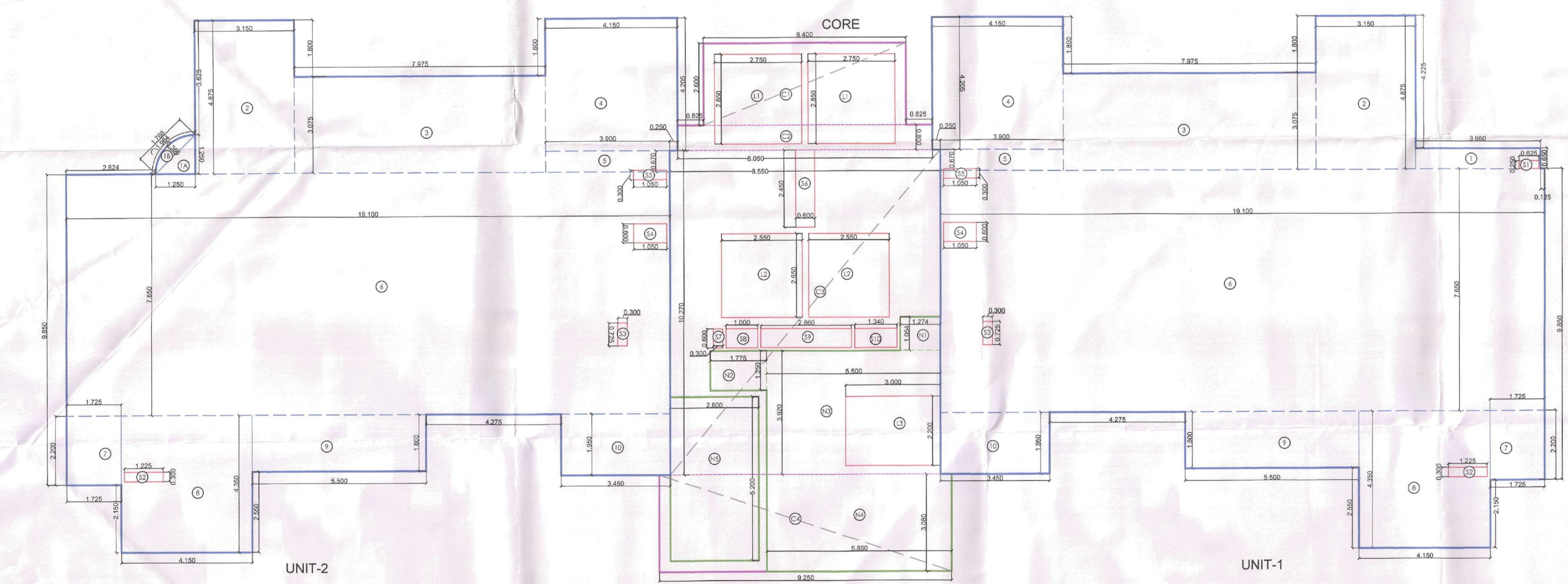


4 BHK + SERVICE PERSONNEL UNIT

4 BHK + SERVICE PERSONNEL UNIT

TOWER 5
1ST LVL LAYOUT

ELEVATION 2



TOWER - 5
TYPICAL LVL AREA DIAGRAM
(LEVEL - 1ST to 15th, 17th to 23rd,
25th to 32nd & 34th to 37th FLOOR)

**TOWER-5
FAR AREA AT UNIT 1 PER FLOOR**
(All Distances are in Meter & Areas in Sqm)

ITEM	NO.S	WIDTH (MTR.)	LENGTH (MTR.)	AREA(SQ.M) T.J. = NO.X LENGTH X WIDTH
1	1	3.950	0.650	2.568
2	1	3.150	4.875	15.356
3	1	7.875	3.075	24.023
4	1	4.150	4.200	17.451
5	1	3.900	0.670	2.613
6	1	19.100	7.850	148.115
7	1	1.725	2.200	3.795
8	1	4.150	4.350	18.053
9	1	5.500	1.800	9.900
10	1	3.450	1.950	6.728
TOTAL(A)				247.151

**TOWER-5
REDUCTION (B)**

ITEM	NO.S	WIDTH (MTR.)	LENGTH (MTR.)	AREA(SQ.M) T.J. = NO.X LENGTH X WIDTH
S1	1	0.625	0.250	0.156
S2	1	1.225	0.300	0.368
S3	1	0.300	0.725	0.218
S4	1	1.050	0.600	0.630
S5	1	1.050	0.300	0.315
TOTAL				1.686

UNIT1-FAR AREA CALCULATION = ADDITION(A) - REDUCTION (B)
= 247.151 - 1.686
= 245.464 SCQMT

**TOWER-5
FAR AREA AT UNIT 2 PER FLOOR**
(All Distances are in Meter & Areas in Sqm)

ITEM	NO.S	WIDTH (MTR.)	LENGTH (MTR.)	AREA(SQ.M) T.J. = NO.X LENGTH X WIDTH
1A	0.5	1.250	1.250	0.781
1B	0.667	0.366	1.768	0.432
2	1	3.150	4.875	15.356
3	1	7.875	3.075	24.023
4	1	4.150	4.200	17.451
5	1	3.900	0.670	2.613
6	1	19.100	7.850	148.115
7	1	1.725	2.200	3.795
8	1	4.150	4.350	18.053
9	1	5.500	1.800	9.900
10	1	3.450	1.950	6.728
TOTAL(A)				248.746

**TOWER-5
REDUCTION (B)**

ITEM	NO.S	WIDTH (MTR.)	LENGTH (MTR.)	AREA(SQ.M) T.J. = NO.X LENGTH X WIDTH
S2	1	1.225	0.300	0.368
S3	1	0.300	0.725	0.218
S4	1	1.050	0.600	0.630
S5	1	1.050	0.300	0.315
TOTAL				1.530

UNIT2-FAR AREA CALCULATION = ADDITION(A) - REDUCTION (B)
= 248.746 - 1.530
= 247.216 SCQMT

**TOWER-5
TOTAL CORE FAR AREA CALCULATION = ADDITION(A) - REDUCTION (B)**

ITEM	NO.S	WIDTH (MTR.)	LENGTH (MTR.)	AREA(SQ.M) T.J. = NO.X LENGTH X WIDTH
S1	1	0.625	0.250	0.156
S2	1	1.225	0.300	0.368
S3	1	0.300	0.725	0.218
S4	1	1.050	0.600	0.630
S5	1	1.050	0.300	0.315
TOTAL				1.686

UNIT1-FAR AREA CALCULATION = ADDITION(A) - REDUCTION (B)
= 247.151 - 1.686
= 245.464 SCQMT

**TOWER-5
TOTAL CORE FAR AREA CALCULATION = ADDITION(A) - REDUCTION (B)**

ITEM	NO.S	WIDTH (MTR.)	LENGTH (MTR.)	AREA(SQ.M) T.J. = NO.X LENGTH X WIDTH
S1	1	0.625	0.250	0.156
S2	1	1.225	0.300	0.368
S3	1	0.300	0.725	0.218
S4	1	1.050	0.600	0.630
S5	1	1.050	0.300	0.315
TOTAL				1.686

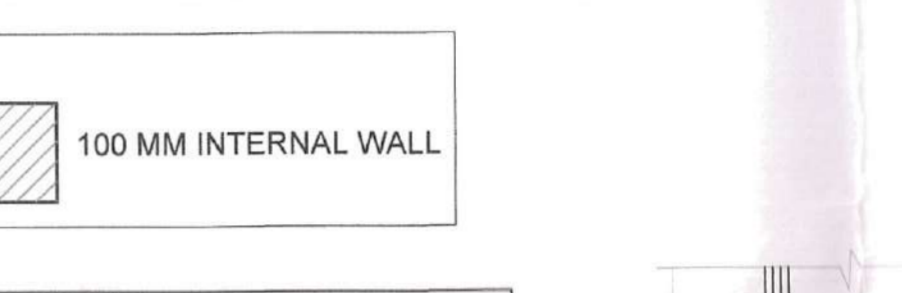
UNIT2-FAR AREA CALCULATION = ADDITION(A) - REDUCTION (B)
= 247.216 - 1.686
= 245.530 SCQMT

LEGEND PLUMBING PIPE

S.No	DESCRIPTION	SIZE
1	110 Ø PVC PIPE	110
2	110 Ø WASTE PIPE	110
3	110 Ø UTILITY WASTE PIPE	110
4	110 Ø PLUMBING WATER PIPE	110
5	110 Ø GARAGE ROOM WASTE PIPE	110
6	110 Ø UPVC HOT PIPE	110
7	110 Ø UPVC COLD WATER PIPE	110
8	110 Ø UPVC UTILITY BALCONY DRAIN PIPE	110
9	110 Ø UPVC BALCONY DRAIN PIPE	110
10	110 Ø UPVC BALCONY DRAIN PIPE	110
11	110 Ø UPVC BALCONY DRAIN PIPE	110
12	110 Ø UPVC BALCONY DRAIN PIPE	110
13	110 Ø UPVC BALCONY DRAIN PIPE	110
14	110 Ø UPVC BALCONY DRAIN PIPE	110
15	110 Ø UPVC BALCONY DRAIN PIPE	110
16	110 Ø UPVC BALCONY DRAIN PIPE	110
17	110 Ø UPVC BALCONY DRAIN PIPE	110
18	110 Ø UPVC BALCONY DRAIN PIPE	110
19	110 Ø UPVC BALCONY DRAIN PIPE	110
20	110 Ø UPVC BALCONY DRAIN PIPE	110
21	110 Ø UPVC BALCONY DRAIN PIPE	110
22	110 Ø UPVC BALCONY DRAIN PIPE	110
23	110 Ø UPVC BALCONY DRAIN PIPE	110
24	110 Ø UPVC BALCONY DRAIN PIPE	110
25	110 Ø UPVC BALCONY DRAIN PIPE	110
26	110 Ø UPVC BALCONY DRAIN PIPE	110
27	110 Ø UPVC BALCONY DRAIN PIPE	110
28	110 Ø UPVC BALCONY DRAIN PIPE	110
29	110 Ø UPVC BALCONY DRAIN PIPE	110
30	110 Ø UPVC BALCONY DRAIN PIPE	110
31	110 Ø UPVC BALCONY DRAIN PIPE	110
32	110 Ø UPVC BALCONY DRAIN PIPE	110
33	110 Ø UPVC BALCONY DRAIN PIPE	110
34	110 Ø UPVC BALCONY DRAIN PIPE	110
35	110 Ø UPVC BALCONY DRAIN PIPE	110
36	110 Ø UPVC BALCONY DRAIN PIPE	110
37	110 Ø UPVC BALCONY DRAIN PIPE	110
38	110 Ø UPVC BALCONY DRAIN PIPE	110
39	110 Ø UPVC BALCONY DRAIN PIPE	110
40	110 Ø UPVC BALCONY DRAIN PIPE	110
41	110 Ø UPVC BALCONY DRAIN PIPE	110
42	110 Ø UPVC BALCONY DRAIN PIPE	110
43	110 Ø UPVC BALCONY DRAIN PIPE	110
44	110 Ø UPVC BALCONY DRAIN PIPE	110
45	110 Ø UPVC BALCONY DRAIN PIPE	110
46	110 Ø UPVC BALCONY DRAIN PIPE	110
47	110 Ø UPVC BALCONY DRAIN PIPE	110
48	110 Ø UPVC BALCONY DRAIN PIPE	110
49	110 Ø UPVC BALCONY DRAIN PIPE	110
50	110 Ø UPVC BALCONY DRAIN PIPE	110
51	110 Ø UPVC BALCONY DRAIN PIPE	110
52	110 Ø UPVC BALCONY DRAIN PIPE	110
53	110 Ø UPVC BALCONY DRAIN PIPE	110
54	110 Ø UPVC BALCONY DRAIN PIPE	110
55	110 Ø UPVC BALCONY DRAIN PIPE	110
56	110 Ø UPVC BALCONY DRAIN PIPE	110
57	110 Ø UPVC BALCONY DRAIN PIPE	110
58	110 Ø UPVC BALCONY DRAIN PIPE	110
59	110 Ø UPVC BALCONY DRAIN PIPE	110
60	110 Ø UPVC BALCONY DRAIN PIPE	110
61	110 Ø UPVC BALCONY DRAIN PIPE	110
62	110 Ø UPVC BALCONY DRAIN PIPE	110
63	110 Ø UPVC BALCONY DRAIN PIPE	110
64	110 Ø UPVC BALCONY DRAIN PIPE	110
65	110 Ø UPVC BALCONY DRAIN PIPE	110
66	110 Ø UPVC BALCONY DRAIN PIPE	110
67	110 Ø UPVC BALCONY DRAIN PIPE	110
68	110 Ø UPVC BALCONY DRAIN PIPE	110
69	110 Ø UPVC BALCONY DRAIN PIPE	110
70	110 Ø UPVC BALCONY DRAIN PIPE	110
71	110 Ø UPVC BALCONY DRAIN PIPE	110
72	110 Ø UPVC BALCONY DRAIN PIPE	110
73	110 Ø UPVC BALCONY DRAIN PIPE	110
74	110 Ø UPVC BALCONY DRAIN PIPE	110
75	110 Ø UPVC BALCONY DRAIN PIPE	110
76	110 Ø UPVC BALCONY DRAIN PIPE	110
77	110 Ø UPVC BALCONY DRAIN PIPE	110
78	110 Ø UPVC BALCONY DRAIN PIPE	110
79	110 Ø UPVC BALCONY DRAIN PIPE	110
80	110 Ø UPVC BALCONY DRAIN PIPE	110
81	110 Ø UPVC BALCONY DRAIN PIPE	110
82	110 Ø UPVC BALCONY DRAIN PIPE	110
83	110 Ø UPVC BALCONY DRAIN PIPE	110
84	110 Ø UPVC BALCONY DRAIN PIPE	110
85	110 Ø UPVC BALCONY DRAIN PIPE	110
86	110 Ø UPVC BALCONY DRAIN PIPE	110
87	110 Ø UPVC BALCONY DRAIN PIPE	110
88	110 Ø UPVC BALCONY DRAIN PIPE	110
89	110 Ø UPVC BALCONY DRAIN PIPE	110
90	110 Ø UPVC BALCONY DRAIN PIPE	110
91	110 Ø UPVC BALCONY DRAIN PIPE	110
92	110 Ø UPVC BALCONY DRAIN PIPE	110
93	110 Ø UPVC BALCONY DRAIN PIPE	110
94	110 Ø UPVC BALCONY DRAIN PIPE	110
95	110 Ø UPVC BALCONY DRAIN PIPE	110
96	110 Ø UPVC BALCONY DRAIN PIPE	110
97	110 Ø UPVC BALCONY DRAIN PIPE	110
98	110 Ø UPVC BALCONY DRAIN PIPE	110
99	110 Ø UPVC BALCONY DRAIN PIPE	110
100	110 Ø UPVC BALCONY DRAIN PIPE	110

LEGEND FIRE FIGHTING PIPE

S.No	DESCRIPTION	SIZE
1	100 Ø HYDRANT PIPE FOR ZONE-1	100
2	100 Ø HYDRANT PIPE FOR ZONE-2	100
3	100 Ø HYDRANT PIPE FOR ZONE-3	100
4	100 Ø HYDRANT PIPE FOR ZONE-4	100
5	100 Ø HYDRANT PIPE FOR ZONE-5	100
6	100 Ø HYDRANT PIPE FOR ZONE-6	100
7	100 Ø HYDRANT PIPE FOR ZONE-7	100
8	100 Ø HYDRANT PIPE FOR ZONE-8	100
9	100 Ø HYDRANT PIPE FOR ZONE-9	100
10	100 Ø HYDRANT PIPE FOR ZONE-10	100
11	100 Ø HYDRANT PIPE FOR ZONE-11	100
12	100 Ø HYDRANT PIPE FOR ZONE-12	100
13	100 Ø HYDRANT PIPE FOR ZONE-13	100
14	100 Ø HYDRANT PIPE FOR ZONE-14	100
15	100 Ø HYDRANT PIPE FOR ZONE-15	100
16	100 Ø HYDRANT PIPE FOR ZONE-16	100
17	100 Ø HYDRANT PIPE FOR ZONE-17	100
18	100 Ø HYDRANT PIPE FOR ZONE-18	100
19	100 Ø HYDRANT PIPE FOR ZONE-19	100
20	100 Ø HYDRANT PIPE FOR ZONE-20	100
21	100 Ø HYDRANT PIPE FOR ZONE-21	100
22	100 Ø HYDRANT PIPE FOR ZONE-22	100
23	100 Ø HYDRANT PIPE FOR ZONE-23	100
24	100 Ø HYDRANT PIPE FOR ZONE-24	100
25	100 Ø HYDRANT PIPE FOR ZONE-25	100
26	100 Ø HYDRANT PIPE FOR ZONE-26	100
27	100 Ø HYDRANT PIPE FOR ZONE-27	100
28	100 Ø HYDRANT PIPE FOR ZONE-28	100
29	100 Ø HYDRANT PIPE FOR ZONE-29	100
30	100 Ø HYDRANT PIPE FOR ZONE-30	100
31	100 Ø HYDRANT PIPE FOR ZONE-31	100
32	100 Ø HYDRANT PIPE FOR ZONE-32	100
33	100 Ø HYDRANT PIPE FOR ZONE-33	100
34	100 Ø HYDRANT PIPE FOR ZONE-34	100
35	100 Ø HYDRANT PIPE FOR ZONE-35	100
36	100 Ø HYDRANT PIPE FOR ZONE-36	100
37	100 Ø HYDRANT PIPE FOR ZONE-37	100
38	100 Ø HYDRANT PIPE FOR ZONE-38	100
39	100 Ø HYDRANT PIPE FOR ZONE-39	100
40	100 Ø HYDRANT PIPE FOR ZONE-40	100
41	100 Ø HYDRANT PIPE FOR ZONE-41	100
42	100 Ø HYDRANT PIPE FOR ZONE-42	100
43	100 Ø HYDRANT PIPE FOR ZONE-43	100
44	100 Ø HYDRANT PIPE FOR ZONE-44	100
45	100 Ø HYDRANT PIPE FOR ZONE-45	100
46	100 Ø HYDRANT PIPE FOR ZONE-46	100
47	100 Ø HYDRANT PIPE FOR ZONE-47	100
48	100 Ø HYDRANT PIPE FOR ZONE-48	100
49	100 Ø HYDRANT PIPE FOR ZONE-49	100
50	100 Ø HYDRANT PIPE FOR ZONE-50	100
51	100 Ø HYDRANT PIPE FOR ZONE-51	100
52	100 Ø HYDRANT PIPE FOR ZONE-52	100
53	100 Ø HYDRANT PIPE FOR ZONE-53	100
54	100 Ø HYDRANT PIPE FOR ZONE-54	100
55	100 Ø HYDRANT PIPE FOR ZONE-55	100
56	100 Ø HYDRANT PIPE FOR ZONE-56	100
57	100 Ø HYDRANT PIPE FOR ZONE-57	100
58	100 Ø HYDRANT PIPE FOR ZONE-58	100
59	100 Ø HYDRANT PIPE FOR ZONE-59	100
60	100 Ø HYDRANT PIPE FOR ZONE-60	100
61	100 Ø HYDRANT PIPE FOR ZONE-61	100
62	100 Ø HYDRANT PIPE FOR ZONE-62	100
63	100 Ø HYDRANT PIPE FOR ZONE-63	100
64	100 Ø HYDRANT PIPE FOR ZONE-64	100
65	100 Ø HYDRANT PIPE FOR ZONE-65	100
66	100 Ø HYDRANT PIPE FOR ZONE-66	100
67	100 Ø HYDRANT PIPE FOR ZONE-67	100
68	100 Ø HYDRANT PIPE FOR ZONE-68	100
69	100 Ø HYDRANT PIPE FOR ZONE-69	100
70	100 Ø HYDRANT PIPE FOR ZONE-70	100
71	100 Ø HYDRANT PIPE FOR ZONE-71	100
72	100 Ø HYDRANT PIPE FOR ZONE-72	100
73	100 Ø HYDRANT PIPE FOR ZONE-73	100
74	100 Ø HYDRANT PIPE FOR ZONE-74	100
75	100 Ø HYDRANT PIPE FOR ZONE-75	100
76	100 Ø HYDRANT PIPE FOR ZONE-76	100
77	100 Ø HYDRANT PIPE FOR ZONE-77	100
78	100 Ø HYDRANT PIPE FOR ZONE-78	100
79	100 Ø HYDRANT PIPE FOR ZONE-79	100
80	100 Ø HYDRANT PIPE FOR ZONE-80	100
81	100 Ø HYDRANT PIPE FOR ZONE-81	100
82	100 Ø HYDRANT PIPE FOR ZONE-82	100
83	100 Ø HYDRANT PIPE FOR ZONE-83	100
84	100 Ø HYDRANT PIPE FOR ZONE-84	100
85	100 Ø HYDRANT PIPE FOR ZONE-85	100
86	100 Ø HYDRANT PIPE FOR ZONE-86	100
87	100 Ø HYDRANT PIPE FOR ZONE-87	100
88	100 Ø HYDRANT PIPE FOR ZONE-88	100
89	100 Ø HYDRANT PIPE FOR ZONE-89	100
90	100 Ø HYDRANT PIPE FOR ZONE-90	100
91	100 Ø HYDRANT PIPE FOR ZONE-91	100
92	100 Ø HYDRANT PIPE FOR ZONE-92	100
93	100 Ø HYDRANT PIPE FOR ZONE-93	100
94	100 Ø HYDRANT PIPE FOR ZONE-94	100
95	100 Ø HYDRANT PIPE FOR ZONE-95	100
96	100 Ø HYDRANT PIPE FOR ZONE-96	100
97	100 Ø HYDRANT PIPE FOR ZONE-97	100
98	100 Ø HYDRANT PIPE FOR ZONE-98	100
99	100 Ø HYDRANT PIPE FOR ZONE-99	100
100	100 Ø HYDRANT PIPE FOR ZONE-100	100



LEGEND SHAFT

S.No	DESCRIPTION	SIZE
S1	ELEC. SHAFT	1.05 X 0.60
S2	ST. PRESS. SHAFT	0.95 X 1.38
S3	LOBBY PRESS. SHAFT	0.60 X 2.40
S4	FHC SHAFT	0.50 X 1.050
S5	FIRE LOBBY PRESS. SHAFT	1.34 X 0.60
S6	LV SHAFT	1 X 0.60
S7	PL SHAFT	0.30 X 0.60
S8	FHC SHAFT	2.80 X 0.60
S9	FHC SHAFT	3.20 X 0.60
S10	ELEC. SHAFT	0.65 X 1.20
S11	PL SHAFT	0.675 X 1.20
S12	ELEC. SHAFT	0.675 X 1.050
S13	PL SHAFT	0.675 X 1.07

DOOR WINDOW SCHEDULE

TYPE	WIDTH	HEIGHT	BILL LVL.	LINTEL LVL.	REMARKS
------	-------	--------	-----------	-------------	---------