

SITE GREEN AREA CALCULATION						
S.no.	Description	Type	Number	Dimension (Meters) Length(L) Breadth(W)	Calculation	Answer Unit
ADDITION						
1	1	Trapezium	1	137.730 1.575	LX W	216.925 sqm.
2	2	Trapezium	5.2	1.150 5.000	(L + W)/2	15.990 sqm.
3	3	Arc	1	6.470 1.555		6.741 sqm.
4	4	Trapezium	61.84	2.580 0.475	LX W	94.461 sqm.
5	5	Rectangle	1	6.500 6.310	LX W	41.015 sqm.
6	6	Rectangle	2	7.700 2.850	LX W	43.890 sqm.
7	7	Rectangle	1	111.975 1.340	LX W	150.047 sqm.
8	8	Triangle	1	111.975 0.565	LX Wx1/2	31.633 sqm.
9	9	Rectangle	1	6.385 6.905	LX W	44.088 sqm.
10	11	Rectangle	1	18.665 5.990	LX W	111.803 sqm.
11	12	Rectangle	1	10.075 5.865	LX W	59.090 sqm.
12	13	Rectangle	1	5.005 3.850	LX W	19.269 sqm.
13	14	Rectangle	1	5.105 3.700	LX W	18.889 sqm.
14	15	Rectangle	1	95.300 26.990	LX W	2572.147 sqm.
15	16	Triangle	1	88.210 0.590	LX Wx1/2	26.022 sqm.
16	17	Arc	1	7.925 1.550		8.230 sqm.
17	17a	Triangle	1	5.830 5.365	LX Wx1/2	15.639 sqm.
18	18	Rectangle	1	5.830 2.125	LX W	12.389 sqm.
19	19	Rectangle	1	0.805 15.300	LX W	12.317 sqm.
20	20	Triangle	1	5.835 5.370	LX Wx1/2	15.667 sqm.
21	21	Arc	1	7.930 1.550		8.235 sqm.
22	22	Triangle	1	0.590 18.350	LX Wx1/2	5.413 sqm.
23	23	Arc	2	7.930 0.940		9.989 sqm.
24	30	Triangle	1	0.605 1.800	LX Wx1/2	0.545 sqm.
25	31	Arc	1	1.905 0.155		0.198 sqm.
26	32	Rectangle	1	0.965 1.800	LX W	1.737 sqm.
27	33	Rectangle	1	1.570 20.300	LX W	31.871 sqm.
28	34	Triangle	1	1.570 3.020	LX Wx1/2	2.371 sqm.
29	35	Arc	1	3.405 0.395		0.901 sqm.
30	35a	Arc	1	2.390 0.190		0.304 sqm.
31	36	Trapezium	1	2.265 3.405	LX W	7.712 sqm.
32	37	Rectangle	1	8.070 3.785	LX W	30.545 sqm.
33	38	Rectangle	1	3.495 5.280	LX W	18.454 sqm.
34	39	Rectangle	1	3.495 5.140	LX W	17.964 sqm.
35	40	Rectangle	1	3.345 5.540	LX W	18.531 sqm.
36	41	Rectangle	1	4.985 3.915	LX W	19.516 sqm.
37	42	Rectangle	1	1.355 4.635	LX W	6.280 sqm.
38	43	Rectangle	1	3.300 3.770	LX W	12.441 sqm.
39	44	Rectangle	1	3.315 5.440	LX W	18.034 sqm.
40	46	Rectangle	1	8.065 3.770	LX W	30.405 sqm.
41	46a	Rectangle	1	4.805 3.770	LX W	18.115 sqm.
42	46b	Rectangle	1	3.345 5.395	LX W	18.046 sqm.
43	47	Rectangle	1	8.965 3.640	LX W	32.633 sqm.
44	48	Triangle	1	3.000 2.990	LX Wx1/2	4.485 sqm.
45	49	Arc	1	4.245 0.880		2.503 sqm.
46	49a	Rectangle	1	3.000 0.635	LX W	1.905 sqm.
47	50	Rectangle	1	1.630 3.885	LX W	6.333 sqm.
48	51	Rectangle	1	2.665 14.580	LX W	38.856 sqm.
49	52	Rectangle	1	1.630 2.890	LX W	4.711 sqm.
50	61	Rectangle	1	1.500 1.725	LX W	2.588 sqm.
51	62	Trapezium	5.68	1.500 4.650	LX W	17.466 sqm.
52	63	Arc	1	2.640 0.340		0.601 sqm.
53	64	Rectangle	1	4.650 0.730	LX W	3.395 sqm.
54	65	Trapezium	3.85	1.500 4.650	LX W	11.839 sqm.
55	66	Arc	1	4.975 0.865		2.883 sqm.

56	67	Rectangle	1	13.850 1.850	LX W	25.623 sqm.
57	68	Rectangle	1	30.770 3.045	LX W	93.695 sqm.
58	69	Arc	1	5.295 1.055		3.743 sqm.
59	70	Triangle	1	3.645 3.845	LX Wx1/2	7.008 sqm.
60	71	Rectangle	1	3.645 31.955	LX W	116.476 sqm.
61	72	Trapezium	1.85	3.645 1.795	LX W	5.032 sqm.
62	73	Arc	1	2.615 0.540		0.946 sqm.
63	74	Rectangle	2	2.855 4.670	LX W	26.666 sqm.
64	75	Rectangle	2	22.010 3.465	LX W	152.529 sqm.
65	76	Arc	1	4.730 0.770		2.440 sqm.
66	77	Triangle	1	3.225 3.465	LX Wx1/2	5.587 sqm.
67	78	Rectangle	1	3.225 22.130	LX W	71.369 sqm.
68	79	Rectangle	1	1.605 2.390	LX W	3.836 sqm.
69	80	Rectangle	1	14.955 2.580	LX W	38.584 sqm.
70	83	Rectangle	2	3.930 2.930	LX W	23.020 sqm.
71	84	Rectangle	1	8.745 30.660	LX W	268.133 sqm.
72	85	Rectangle	1	70.980 1.340	LX W	95.113 sqm.
73	86	Rectangle	1	4.585 3.650	LX W	16.735 sqm.
74	87	Arc	1	1.905 0.395		0.504 sqm.
75	88	Trapezium	1.35	3.235 4.585		5.279 sqm.
76	89	Rectangle	1	31.620 6.035	LX W	190.827 sqm.
77	90	Rectangle	1	6.180 0.900	LX W	5.562 sqm.
78	91	Rectangle	1	6.660 6.200	LX W	41.292 sqm.
79	92	Trapezium	1.35	6.200 4.850		7.459 sqm.
80	93	Arc	1	1.910 0.395		0.505 sqm.
81	94	Rectangle	1	36.065 0.900	LX W	32.459 sqm.
82	95	1/4 Circle	2	1.350	$\pi r^2 / 4$	2.862 sqm.
83	96	Rectangle	1	2.510 4.855	LX W	12.186 sqm.
84	97	Rectangle	1	1.490 1.350	LX W	2.012 sqm.
85	98	Rectangle	1	2.840 2.000	LX W	5.680 sqm.
86	99	1/4 Circle	1	2.850	$\pi r^2 / 4$	6.378 sqm.
87	100	Rectangle	1	1.160 1.350	LX W	1.566 sqm.
88	101	Rectangle	1	6.285 27.415	LX W	172.303 sqm.
89	102	Triangle	1	9.150 9.150	LX Wx1/2	41.861 sqm.
90	103	Rectangle	1	80.405 0.680	LX W	41.075 sqm.
91	104	Rectangle	1	28.255 0.760	LX W	21.474 sqm.
92	105	Rectangle	1	10.185 11.690	LX W	119.063 sqm.
93	106	Rectangle	1	7.790 13.390	LX W	104.308 sqm.
94	107	Rectangle	1	3.350 4.485	LX W	15.025 sqm.
95	108	Rectangle	1	6.715 4.705	LX W	31.594 sqm.
96	109	Rectangle	1	8.725 2.725	LX W	23.776 sqm.
97	110	Rectangle	1	5.230 2.110	LX W	11.035 sqm.
98	111	Rectangle	1	3.345 2.980	LX W	9.968 sqm.
99	112	Rectangle	1	5.550 2.075	LX W	11.516 sqm.
100	113	Rectangle	1	12.330 3.025	LX W	37.298 sqm.
101	114	Rectangle	1	8.605 3.125	LX W	26.891 sqm.
102	115	Rectangle	1	5.260 1.855	LX W	9.757 sqm.
103	116	Rectangle	1	3.465 2.870	LX W	9.945 sqm.
104	117	Rectangle	1	9.200 7.555	LX W	69.506 sqm.

PLOT AREA	38351.997	SQ.M
MINIMUM REQUIRED GREEN AREA @15%	5752.800	SQ.M
	15.00%	
GREEN AREA PROPOSED	5897.126	SQ.M
	15.38%	

TOTAL ADDITION (A) = 5951.552 SQ.M						
DEDUCTION (X)						
1	A	Triangle	2	3.550 7.090	LX Wx1/2	25.170 sqm.
2	B	Arc	1	3.855 0.500		1.291 sqm.
3	C	Triangle	1	1.030 9.185	LX Wx1/2	4.730 sqm.
4	D	Arc	1	12.940 2.680		23.235 sqm.
TOTAL DEDUCTION (A) = 54.426 SQ.M						
TOTAL GREEN AREA ACHIEVED = A-X 5897.126 SQ.M						

This is a "PROVISIONAL BUILDING PLAN" approved only for the purpose of inviting objections from the general public

Member Secretary B.P.A.C.
Member B.P.A.C.
Chairman B.P.A.C.

DTP(HQ) ATP(HQ)

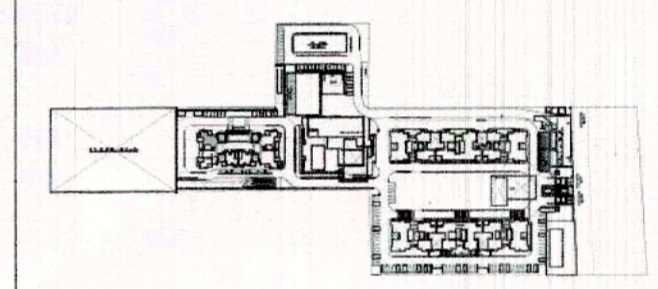
DDP(HQ) MEMBER B.P.A.C.
Ram Avtar Bassi JD(HQ)

TO BE READ WITH THIS OFFICE MEMO NO. DATED :

GENERAL NOTES :-

- Gate and Boundary wall as per standard design.
- The responsibility of the structure design and structure stability of the building block earth quake shall be solely of the architect, Engineer or of the owner.
- All dimension are in mm.
- All the basement shall have mechanical ventilation in addition to the natural ventilation and artificial lighting
- The total complex is with generator with automatic switchover provision for all services.
- All Lifts and Services area shall have 100% Power Back up.
- All Electrical Installations shall be as per provision of NBC - 2016.
- Fire Fighting / Safety Provisions will be as per relevant NBC Codes-2016.
- All Toilets have permanent Ventilation and Kitchen shall have the provision of Exhaust fan.

KEY PLAN:



JOB TITLE:

Revised building plan submission of group housing area measuring 10.25 acres (license No. 16 of 2014 dated 10.06.2014) in sec-2, Sohna being developed by ASHIANA DWELLINGS PVT. LTD. (P.S.I. INFRA TECH PVT. LTD.)

AS SANCTIONED UNDER MEMO NO. ZP1062/AD(RA)/2020 / 19014, DATED 28-10-2020

EXECUTIVE ARCHITECTS:

DESIGN FORUM INTERNATIONAL
K-47 KAILASH COLONY, NEW DELHI- 110048
PHONE: 011-46556600, FAX 46556601

CLIENT:

ASHIANA DWELLINGS PVT. LTD.

DRAWING TITLE:

SITE PLAN - GREEN AREA CALCULATION

OWNER'S SIGN:

PRATEEK M VANGIKAR
CA/2005/37225

ARCHITECT'S SIGN:

Checked and found ok for Public Health (Internal) Service only subject to comments in forwarding letter No. 330.160. D. 6. 11/12/2024

SCALE:

1:550 @ A1

DATE:

18-12-2024

DRAWING NO.:

02

