

FLOOR PLAN
SCALE - 1:750

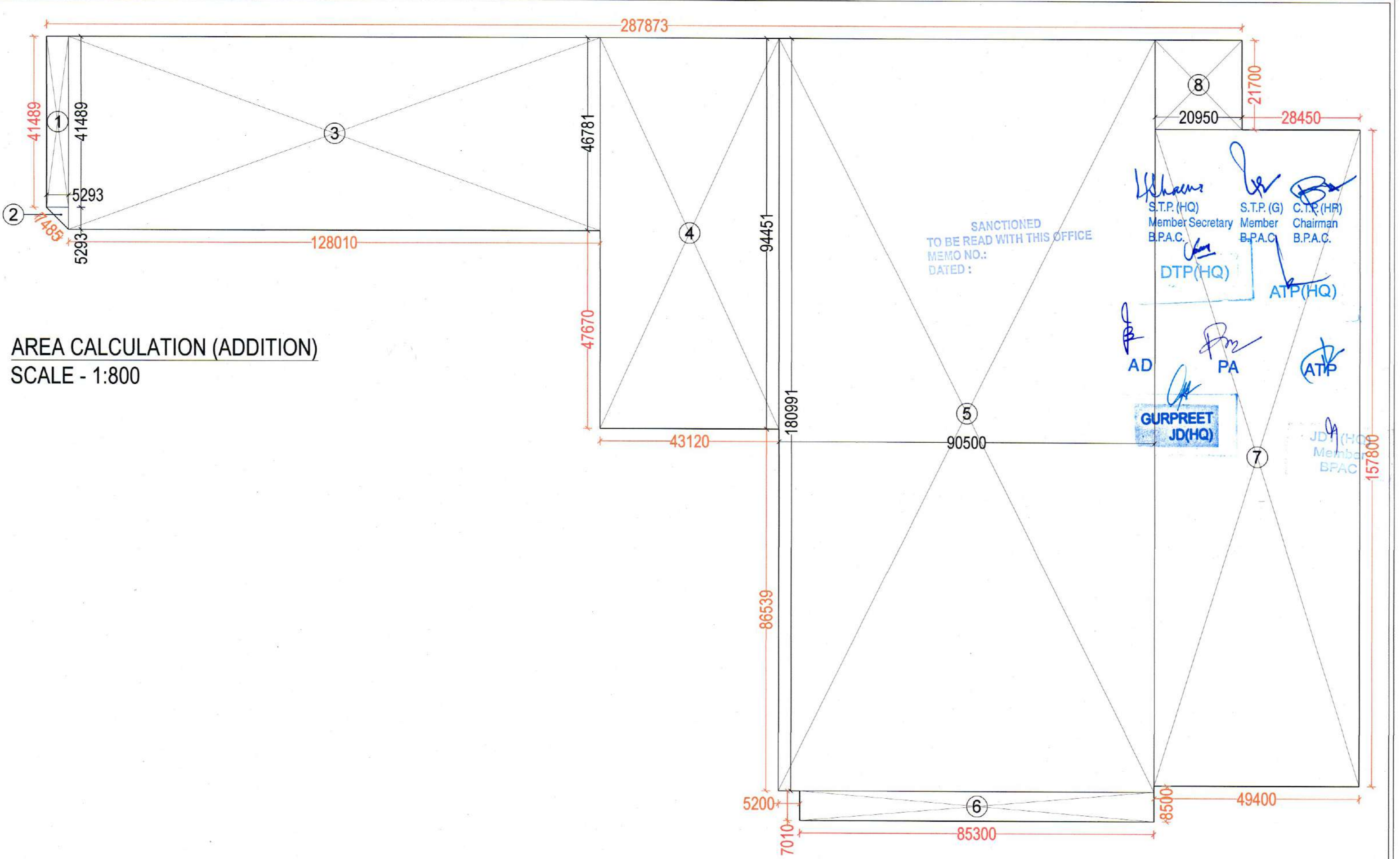
BASEMENT AREA FOR PARKING (BASEMENT -3)			
NAME	SHAPE	SIZE (IN MTS.)	TOTAL (IN SQ.MT.)
ADDITION			
1	RECTANGLE	41.489 5.293	219.80
2	TRIANGLE	5.293 5.293	14.01
3	RECTANGLE	128.010 46.781	5988.44
4	RECTANGLE	43.120 94.451	4072.73
5	RECTANGLE	90.500 180.991	16379.69
6	RECTANGLE	85.300 7.010	597.95
7	RECTANGLE	49.400 157.800	7795.32
8	RECTANGLE	20.950 21.700	454.62
TOTAL ADDITION			35522.35
SUBTRACTION			
9	RECTANGLE	4.550 9.400	42.77
10	RECTANGLE	4.313 1.200	5.18
11	RECTANGLE	2.213 6.650	14.72
12	RECTANGLE	3.788 6.550	24.81
13	RECTANGLE	10.188 2.300	23.43
14	RECTANGLE	2.113 2.300	4.86
15	RECTANGLE	0.763 1.390	1.06
16	RECTANGLE	11.988 7.490	89.79
17	RECTANGLE	12.150 1.250	15.19
18	RECTANGLE	0.562 5.900	3.32
19	RECTANGLE	4.600 7.450	34.27
20	RECTANGLE	6.525 7.450	48.61
21	RECTANGLE	4.313 1.188	5.12
22	RECTANGLE	2.212 4.612	10.20
23	RECTANGLE	7.738 4.700	36.37
24	RECTANGLE	13.650 4.350	59.38
25	RECTANGLE	1.550 2.500	3.88
26	RECTANGLE	10.050 7.290	73.26
27	RECTANGLE	8.300 1.250	10.38
28	RECTANGLE	2.700 7.490	20.22
29	RECTANGLE	6.525 7.450	48.61
30	RECTANGLE	4.313 1.200	5.18
31	RECTANGLE	8.163 6.650	54.28
32	RECTANGLE	3.788 6.750	25.57
33	RECTANGLE	5.900 2.300	13.57
34	RECTANGLE	4.550 1.390	6.32
35	RECTANGLE	3.650 3.890	14.20
36	RECTANGLE	6.000 6.150	36.90
37	RECTANGLE	4.550 1.390	6.32
38	RECTANGLE	4.050 5.900	23.90
39	RECTANGLE	8.300 7.150	59.35
40	RECTANGLE	1.650 5.900	9.74
41	RECTANGLE	3.150 7.450	23.47
42	RECTANGLE	4.550 7.990	36.35
43	RECTANGLE	4.500 5.523	24.85
44	POLYLINE		46.30
45	RECTANGLE	16.075 4.500	72.34
46	POLYLINE		38.51
47	RECTANGLE	24.375 4.900	119.44
48	POLYLINE		51.71
49	RECTANGLE	4.700 5.523	25.96
50	RECTANGLE	4.600 9.400	43.24
51	RECTANGLE	4.200 7.000	29.40
52	RECTANGLE	7.700 8.700	66.99
53	RECTANGLE	7.200 1.200	8.64
54	RECTANGLE	7.300 4.300	31.39
55	RECTANGLE	9.200 3.950	36.34
56	RECTANGLE	5.525 2.900	16.02
57	RECTANGLE	3.975 6.700	26.63
58	RECTANGLE	9.100 6.450	58.70
59	RECTANGLE	1.745 6.450	11.26

60	RECTANGLE	2.300 6.850	15.30
61	RECTANGLE	3.400 6.250	21.25
62	RECTANGLE	4.400 5.650	24.86
63	RECTANGLE	6.300 4.100	25.83
64	RECTANGLE	8.775 1.600	14.04
65	RECTANGLE	5.300 2.900	15.37
66	RECTANGLE	18.320 3.425	62.75
67	RECTANGLE	3.500 5.525	19.34
68	RECTANGLE	2.400 4.625	11.10
69	RECTANGLE	9.770 5.525	53.98
70	RECTANGLE	1.650 2.550	4.21
71	RECTANGLE	7.200 4.200	30.24
72	RECTANGLE	7.200 4.200	30.24
73	RECTANGLE	3.200 5.700	18.24
74	RECTANGLE	4.500 7.200	32.40
75	RECTANGLE	35.500 5.000	177.50
76	RECTANGLE	2.800 2.900	7.54
77	RECTANGLE	6.500 4.600	29.90
78	RECTANGLE	3.725 5.875	21.88
79	RECTANGLE	11.945 3.375	40.31
80	RECTANGLE	9.525 8.375	79.77
81	RECTANGLE	7.920 5.825	46.13
82	RECTANGLE	2.800 7.525	19.57
83	RECTANGLE	3.500 8.475	29.66
84	RECTANGLE	3.800 3.150	11.97
85	RECTANGLE	1.325 4.400	5.83
86	RECTANGLE	4.075 4.500	18.34
87	RECTANGLE	3.700 1.200	4.44
88	RECTANGLE	1.300 1.950	2.54
89	RECTANGLE	4.100 2.500	10.25
90	RECTANGLE	2.300 3.750	8.63
91	RECTANGLE	7.800 7.250	56.55
92	RECTANGLE	3.400 0.600	2.04
93	RECTANGLE	3.200 4.100	13.12
94	RECTANGLE	5.700 7.000	39.90
95	RECTANGLE	7.200 4.200	30.24
96	RECTANGLE	5.500 8.800	48.40
97	RECTANGLE	5.900 31.601	186.45
98	RECTANGLE	32.900 12.101	398.12
99	RECTANGLE	34.250 6.699	229.44
100	RECTANGLE	33.750 13.101	442.16
101	RECTANGLE	3.000 9.300	27.90
102	RECTANGLE	5.500 7.400	40.70
103	RECTANGLE	5.500 7.000	38.50
104	RECTANGLE	4.200 7.200	30.24
105	RECTANGLE	4.300 5.850	25.16
106	RECTANGLE	3.650 4.350	15.88
107	RECTANGLE	2.800 1.900	5.32
108	RECTANGLE	8.300 5.850	48.56
109	RECTANGLE	8.500 12.250	104.13

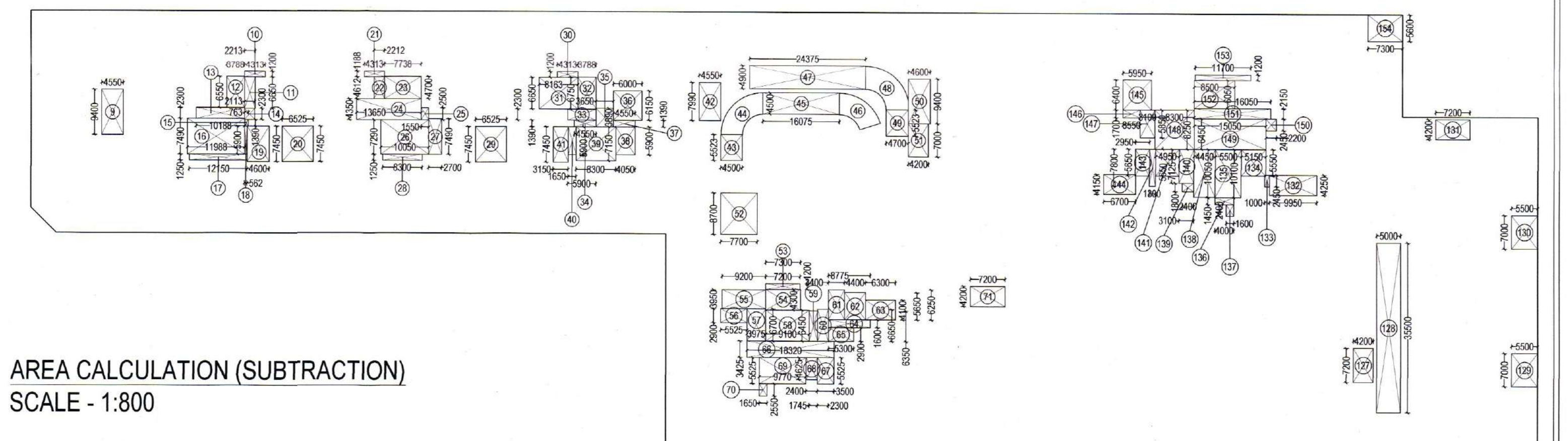
110	RECTANGLE	11.700 1.200	14.04
111	RECTANGLE	6.000 6.700	40.20
112	RECTANGLE	7.650 2.150	16.45
113	RECTANGLE	8.750 2.350	20.56
114	RECTANGLE	6.550 1.700	11.14
115	RECTANGLE	5.150 7.980	41.10
116	RECTANGLE	1.300 2.450	3.19
117	RECTANGLE	3.100 12.500	38.75
118	RECTANGLE	1.600 3.850	6.16
119	RECTANGLE	2.400 13.950	33.48
120	RECTANGLE	4.450 12.450	55.40
121	RECTANGLE	2.400 11.325	27.18
122	RECTANGLE	0.700 9.525	6.67
123	RECTANGLE	5.150 8.050	41.46
124	RECTANGLE	1.300 2.450	3.19
125	RECTANGLE	0.300 1.500	0.45
126	RECTANGLE	6.000 6.700	40.20
127	RECTANGLE	4.200 7.200	30.24
128	RECTANGLE	5.000 35.500	177.50
129	RECTANGLE	5.500 7.000	38.50
130	RECTANGLE	5.500 7.000	38.50
131	RECTANGLE	7.200 4.200	30.24
132	RECTANGLE	9.950 4.250	42.29
133	RECTANGLE	1.000 2.450	2.45
134	RECTANGLE	5.150 5.550	28.58
135	RECTANGLE	5.500 10.100	55.55
136	RECTANGLE	4.000 1.450	5.80
137	RECTANGLE	1.600 2.400	3.84
138	RECTANGLE	4.450 10.050	44.72
139	RECTANGLE	2.400 1.800	4.32
140	RECTANGLE	3.100 7.125	22.09
141	RECTANGLE	4.950 5.650	27.97
142	RECTANGLE	1.300 7.800	10.14
143	RECTANGLE	2.950 5.650	16.67
144	RECTANGLE	6.700 4.150	27.81
145	RECTANGLE	5.950 6.400	38.08
146	RECTANGLE	3.550 1.700	6.04
147	RECTANGLE	3.100 5.850	18.14
148	RECTANGLE	8.300 8.250	68.48
149	RECTANGLE	15.050 6.450	97.07
150	RECTANGLE	2.200 2.450	5.39
151	RECTANGLE	16.050 2.150	34.51
152	RECTANGLE	8.500 6.050	51.43
153	RECTANGLE	11.700 1.200	14.04
154	RECTANGLE	7.300 5.600	40.88
TOTAL SUBTRACTION			5655.30
TOTAL BASEMENT -3 AREA FOR PARKING			29867.04

NOTE:
 • ALL DIMENSIONS ARE IN MM UNLESS MENTIONED.
 • ALL MANDATORY SERVICES ARE AS PER N.B.C. NORMS.
 • ALL SHAFTS & BASEMENTS ARE MECHANICALLY LIT & VENTILATED.
 • ALL SUPERSTRUCTURE & BASEMENTS ARE FULLY SPRINKLERED.
 • BASEMENTS ARE MECHANICALLY VENTILATED.
 • ALL FLOORS ARE CENTRALLY AIR CONDITIONED.
 • STRUCTURAL SYSTEM - BEAM COLUMN SYSTEM.
 • SITE AREA AS PER APPROVED ZONING PLAN.
 • GATE AND BOUNDARY WALL AS PER STANDARD DETAIL.
 • BUILDING HAS COMPLETE POWER BACKUP.
 • ALL FLOORS AND BASEMENTS HAVE AUTOMATIC SPRINKLER SYSTEM FOR FIRE FIGHTING AS PER NBC 2016.
 • BACK TO BACK PARKING TO BE ALLOTTED TO SINGLE OWNER AND NOT COUNTED IN SINGLE BAYS

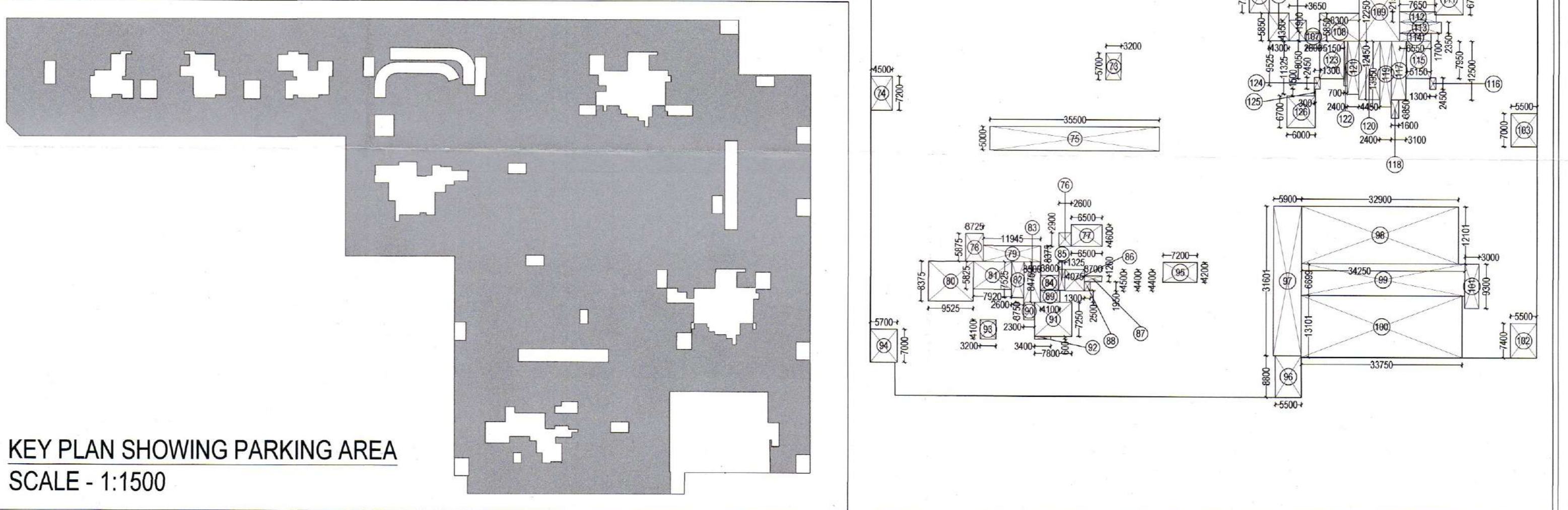
ESC PARKING AVAILABLE @ 32 SQ.MT. / 1 ECS	933.35
PARKING BAYS PROVIDED	SAY 933



AREA CALCULATION (ADDITION)
SCALE - 1:800



AREA CALCULATION (SUBTRACTION)
SCALE - 1:800



KEY PLAN SHOWING PARKING AREA
SCALE - 1:1500

PROJECT	DEVELOPER	DESIGN CONSULTANTS	SERVICES CONSULTANTS	STRUCTURAL CONSULTANTS	ARCHITECT ON RECORD	TITLE	SHEET NO.	ARCHITECT SIGNATURE	OWNER SIGNATURE
PROPOSED GROUP HOUSING COLONY MIX LAND USE (93.95% RESIDENTIAL COMPONENT + 6.05% COMMERCIAL COMPONENT) FOR AN AREA MEASURING 18.2375 ACRES (LICENCE NO. 50 OF 2025, DATED 09/04/2025) IN SECTOR 36, GURUGRAM, HARYANA.	MAX ESTATES GURGAON TWO LIMITED LEVEL 20, MAX TOWERS, C-001/A-1, SECTOR - 16B, NOIDA, UP - 201301	RSP Design Consultants Pvt. Ltd. Unit 103, Bestech Business Tower, Sector 48, Sohna Road, Gurugram - 120118. Head Office No. 30, Museum Road, Bangalore - 560001. Tel: 25596868, Fax: 25596818, Email: rsp@rspindia.net, Web: www.rspindia.net	AEON INTEGRATED BUILDING DESIGN CONSULTANTS LLP A-122, 6th Floor, Sector 136, Noida, UP - 201305 Tel: 0120-6909526	NNC Design International G-70, Second Floor, Jaswant Plaza, Shaheen Bagh, Okhla, New Delhi - 110025. Tel: 011-26940734/5/6, Fax: 011-26940734, Email: nnc.mail7@gmail.com	CONTINENTAL DESIGN STUDIO #1006, 1st Floor, Sector - 4, Panchkula, Haryana - 134112 Tel: 0172-4014404 Email: continentaldesignstudio@gmail.com	BASEMENT - 3	31 (A1)	RATTAN PAL SINGH ARCHITECT CA/204/51128	