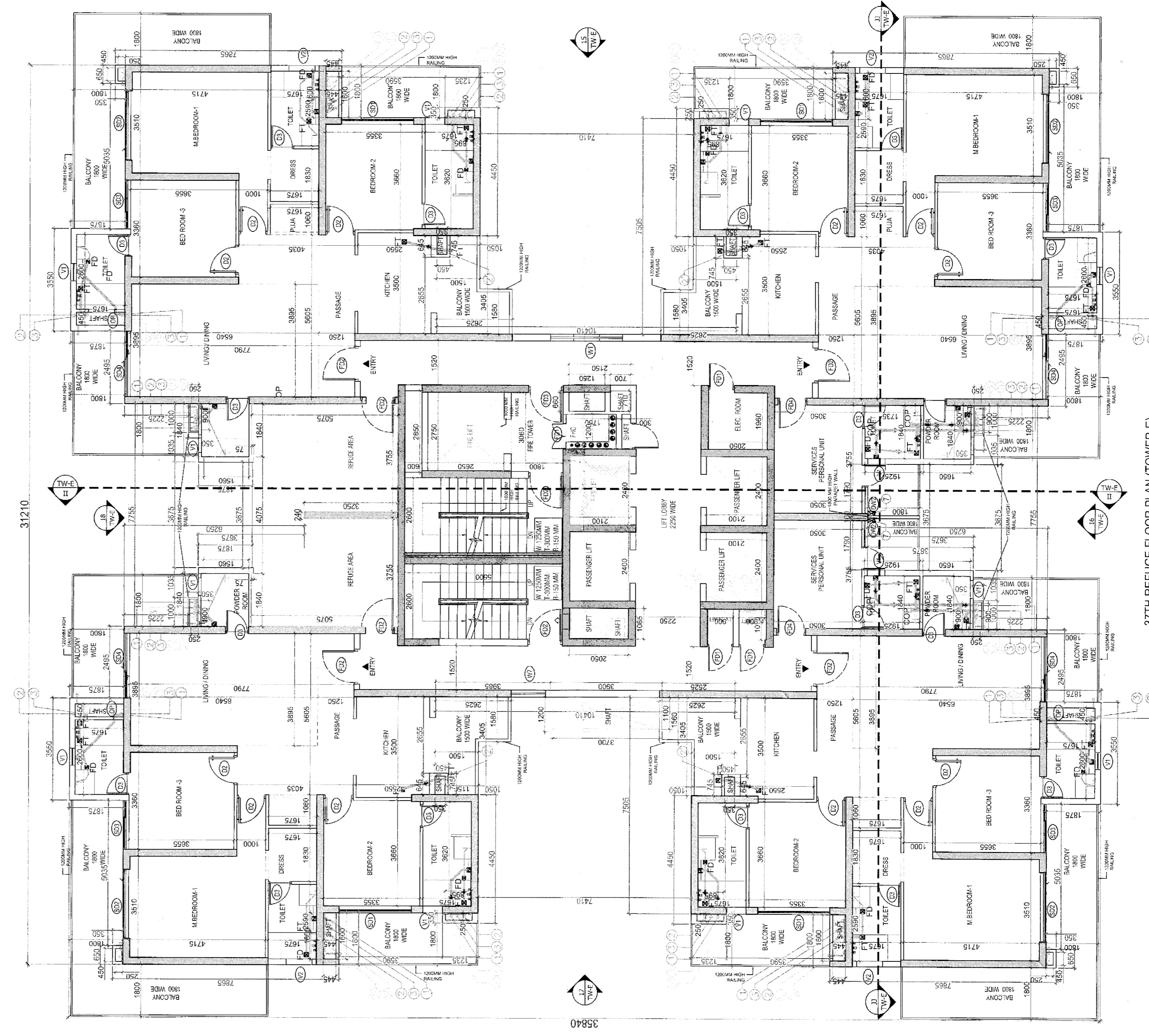
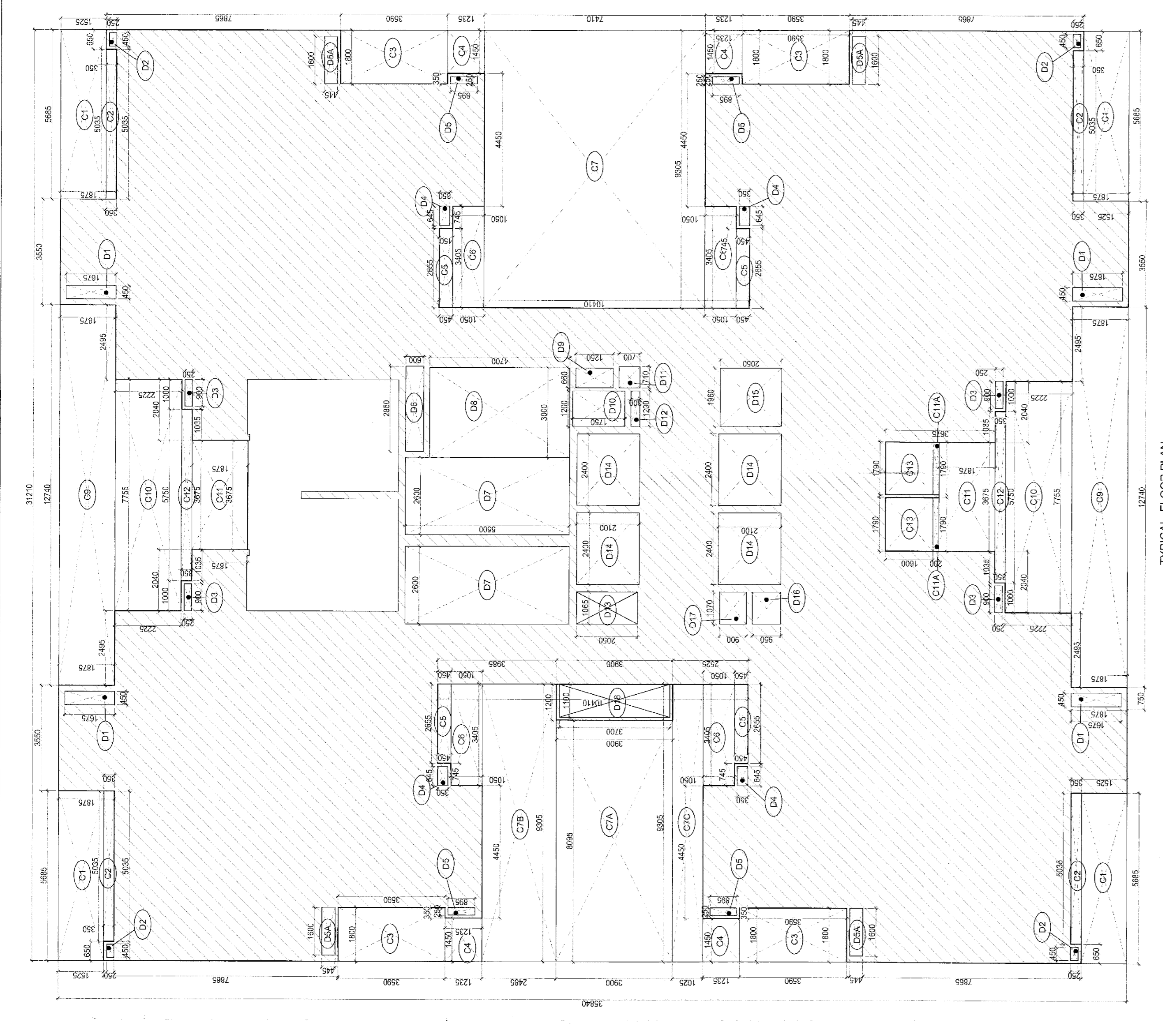


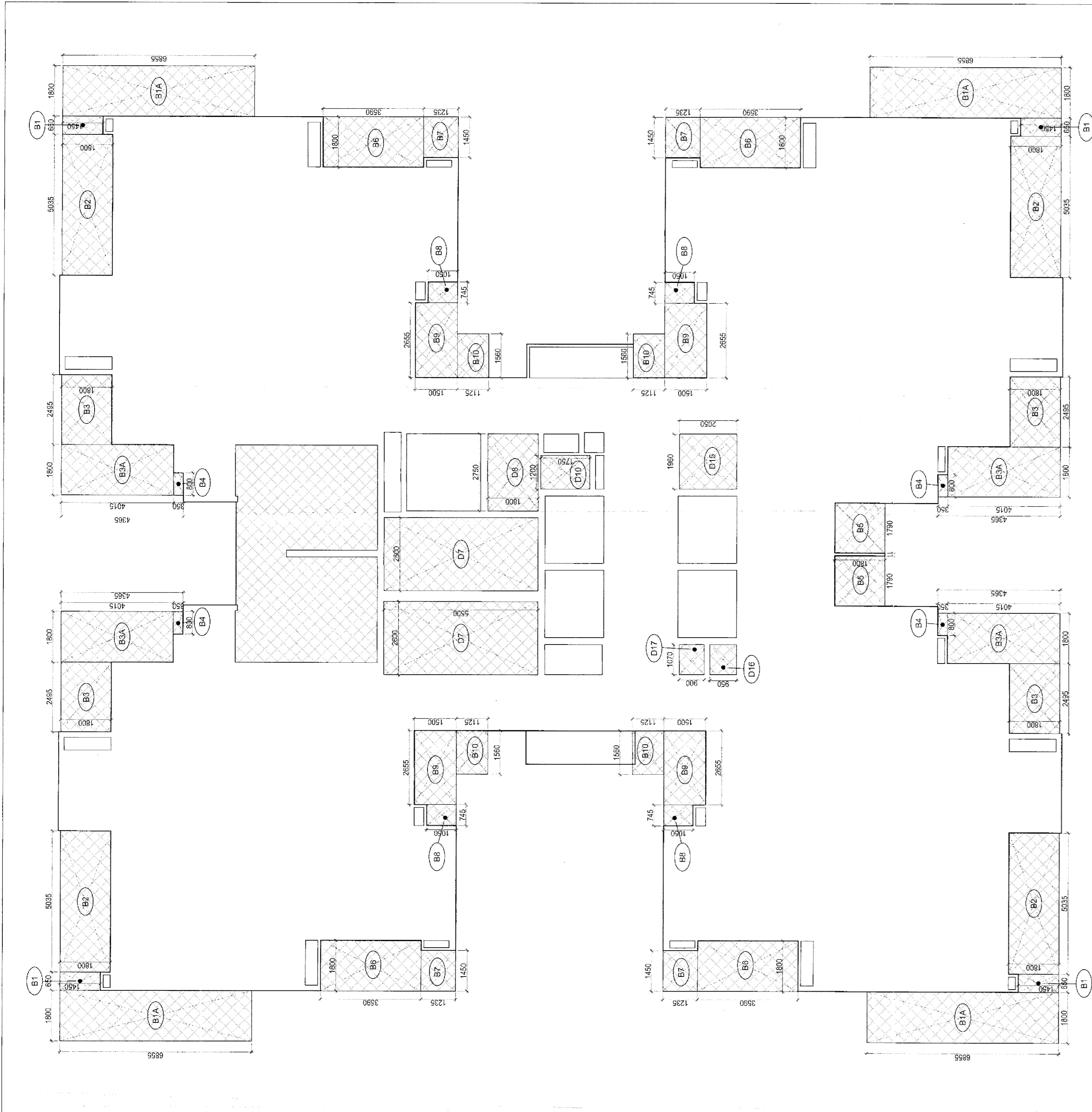
TYPICAL REFUGE FLOOR PLAN (18TH & 28TH) (TOWER 1)



37TH REFUGE FLOOR PLAN (TOWER 1)



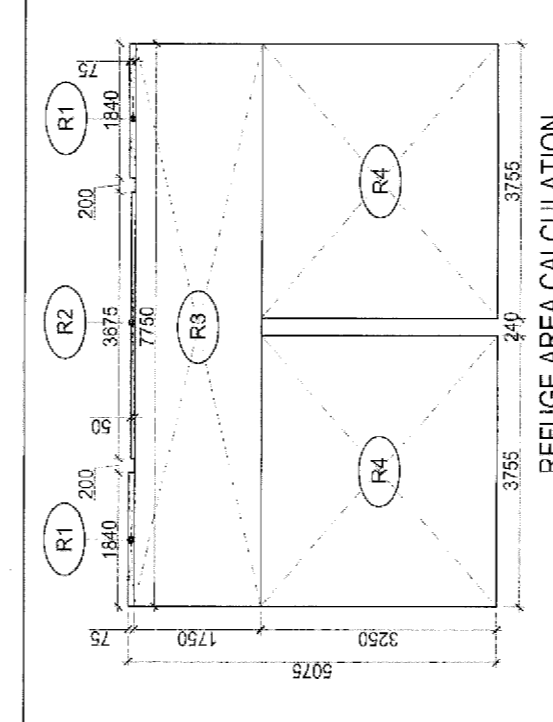
TYPICAL REFUGE FLOOR PLAN (19TH, 28TH & 37TH) (TOWER 1)



TYPICAL REFUGE FLOOR PLAN (NON-FAR AREA DIAGRAM) (TOWER 1)

| REFUGE FLOOR FAR AREA CALCULATIONS | | | |
|------------------------------------|-----|--------------|--------------|
| X | Y | Z (IN S.M.E) | Z (IN S.M.E) |
| 1 | 2 | 3 | 4 |
| 1 | 2 | 3 | 4 |
| 5 | 6 | 7 | 8 |
| 9 | 10 | 11 | 12 |
| 13 | 14 | 15 | 16 |
| 17 | 18 | 19 | 20 |
| 21 | 22 | 23 | 24 |
| 25 | 26 | 27 | 28 |
| 29 | 30 | 31 | 32 |
| 33 | 34 | 35 | 36 |
| 37 | 38 | 39 | 40 |
| 41 | 42 | 43 | 44 |
| 45 | 46 | 47 | 48 |
| 49 | 50 | 51 | 52 |
| 53 | 54 | 55 | 56 |
| 57 | 58 | 59 | 60 |
| 61 | 62 | 63 | 64 |
| 65 | 66 | 67 | 68 |
| 69 | 70 | 71 | 72 |
| 73 | 74 | 75 | 76 |
| 77 | 78 | 79 | 80 |
| 81 | 82 | 83 | 84 |
| 85 | 86 | 87 | 88 |
| 89 | 90 | 91 | 92 |
| 93 | 94 | 95 | 96 |
| 97 | 98 | 99 | 100 |
| 101 | 102 | 103 | 104 |
| 105 | 106 | 107 | 108 |
| 109 | 110 | 111 | 112 |
| 113 | 114 | 115 | 116 |
| 117 | 118 | 119 | 120 |
| 121 | 122 | 123 | 124 |
| 125 | 126 | 127 | 128 |
| 129 | 130 | 131 | 132 |
| 133 | 134 | 135 | 136 |
| 137 | 138 | 139 | 140 |
| 141 | 142 | 143 | 144 |
| 145 | 146 | 147 | 148 |
| 149 | 150 | 151 | 152 |
| 153 | 154 | 155 | 156 |
| 157 | 158 | 159 | 160 |
| 161 | 162 | 163 | 164 |
| 165 | 166 | 167 | 168 |
| 169 | 170 | 171 | 172 |
| 173 | 174 | 175 | 176 |
| 177 | 178 | 179 | 180 |
| 181 | 182 | 183 | 184 |
| 185 | 186 | 187 | 188 |
| 189 | 190 | 191 | 192 |
| 193 | 194 | 195 | 196 |
| 197 | 198 | 199 | 200 |
| 201 | 202 | 203 | 204 |
| 205 | 206 | 207 | 208 |
| 209 | 210 | 211 | 212 |
| 213 | 214 | 215 | 216 |
| 217 | 218 | 219 | 220 |
| 221 | 222 | 223 | 224 |
| 225 | 226 | 227 | 228 |
| 229 | 230 | 231 | 232 |
| 233 | 234 | 235 | 236 |
| 237 | 238 | 239 | 240 |
| 241 | 242 | 243 | 244 |
| 245 | 246 | 247 | 248 |
| 249 | 250 | 251 | 252 |
| 253 | 254 | 255 | 256 |
| 257 | 258 | 259 | 260 |
| 261 | 262 | 263 | 264 |
| 265 | 266 | 267 | 268 |
| 269 | 270 | 271 | 272 |
| 273 | 274 | 275 | 276 |
| 277 | 278 | 279 | 280 |
| 281 | 282 | 283 | 284 |
| 285 | 286 | 287 | 288 |
| 289 | 290 | 291 | 292 |
| 293 | 294 | 295 | 296 |
| 297 | 298 | 299 | 300 |
| 301 | 302 | 303 | 304 |
| 305 | 306 | 307 | 308 |
| 309 | 310 | 311 | 312 |
| 313 | 314 | 315 | 316 |
| 317 | 318 | 319 | 320 |
| 321 | 322 | 323 | 324 |
| 325 | 326 | 327 | 328 |
| 329 | 330 | 331 | 332 |
| 333 | 334 | 335 | 336 |
| 337 | 338 | 339 | 340 |
| 341 | 342 | 343 | 344 |
| 345 | 346 | 347 | 348 |
| 349 | 350 | 351 | 352 |
| 353 | 354 | 355 | 356 |
| 357 | 358 | 359 | 360 |
| 361 | 362 | 363 | 364 |
| 365 | 366 | 367 | 368 |
| 369 | 370 | 371 | 372 |
| 373 | 374 | 375 | 376 |
| 377 | 378 | 379 | 380 |
| 381 | 382 | 383 | 384 |
| 385 | 386 | 387 | 388 |
| 389 | 390 | 391 | 392 |
| 393 | 394 | 395 | 396 |
| 397 | 398 | 399 | 400 |
| 401 | 402 | 403 | 404 |
| 405 | 406 | 407 | 408 |
| 409 | 410 | 411 | 412 |
| 413 | 414 | 415 | 416 |
| 417 | 418 | 419 | 420 |
| 421 | 422 | 423 | 424 |
| 425 | 426 | 427 | 428 |
| 429 | 430 | 431 | 432 |
| 433 | 434 | 435 | 436 |
| 437 | 438 | 439 | 440 |
| 441 | 442 | 443 | 444 |
| 445 | 446 | 447 | 448 |
| 449 | 450 | 451 | 452 |
| 453 | 454 | 455 | 456 |
| 457 | 458 | 459 | 460 |
| 461 | 462 | 463 | 464 |
| 465 | 466 | 467 | 468 |
| 469 | 470 | 471 | 472 |
| 473 | 474 | 475 | 476 |
| 477 | 478 | 479 | 480 |
| 481 | 482 | 483 | 484 |
| 485 | 486 | 487 | 488 |
| 489 | 490 | 491 | 492 |
| 493 | 494 | 495 | 496 |
| 497 | 498 | 499 | 500 |
| 501 | 502 | 503 | 504 |
| 505 | 506 | 507 | 508 |
| 509 | 510 | 511 | 512 |
| 513 | 514 | 515 | 516 |
| 517 | 518 | 519 | 520 |
| 521 | 522 | 523 | 524 |
| 525 | 526 | 527 | 528 |
| 529 | 530 | 531 | 532 |
| 533 | 534 | 535 | 536 |
| 537 | 538 | 539 | 540 |
| 541 | 542 | 543 | 544 |
| 545 | 546 | 547 | 548 |
| 549 | 550 | 551 | 552 |
| 553 | 554 | 555 | 556 |
| 557 | 558 | 559 | 560 |
| 561 | 562 | 563 | 564 |
| 565 | 566 | 567 | 568 |
| 569 | 570 | 571 | 572 |
| 573 | 574 | 575 | 576 |
| 577 | 578 | 579 | 580 |
| 581 | 582 | 583 | 584 |
| 585 | 586 | 587 | 588 |
| 589 | 590 | 591 | 592 |
| 593 | 594 | 595 | 596 |
| 597 | 598 | 599 | 600 |
| 601 | 602 | 603 | 604 |
| 605 | 606 | 607 | 608 |
| 609 | 610 | 611 | 612 |
| 613 | 614 | 615 | 616 |
| 617 | 618 | 619 | 620 |
| 621 | 622 | 623 | 624 |
| 625 | 626 | 627 | 628 |
| 629 | 630 | 631 | 632 |
| 633 | 634 | 635 | 636 |
| 637 | 638 | 639 | 640 |
| 641 | 642 | 643 | 644 |
| 645 | 646 | 647 | 648 |
| 649 | 650 | 651 | 652 |
| 653 | 654 | 655 | 656 |
| 657 | 658 | 659 | 660 |
| 661 | 662 | 663 | 664 |
| 665 | 666 | 667 | 668 |
| 669 | 670 | 671 | 672 |
| 673 | 674 | 675 | 676 |
| 677 | 678 | 679 | 680 |
| 681 | 682 | 683 | 684 |
| 685 | 686 | 687 | 688 |
| 689 | 690 | 691 | 692 |
| 693 | 694 | 695 | 696 |
| 697 | 698 | 699 | 700 |
| 701 | 702 | 703 | 704 |
| 705 | 706 | 707 | 708 |
| 709 | 710 | 711 | 712 |
| 713 | 714 | 715 | 716 |
| 717 | 718 | 719 | 720 |
| 721 | 722 | 723 | 724 |
| 725 | 726 | 727 | 728 |
| 729 | 730 | 731 | 732 |
| 733 | 734 | 735 | 736 |
| 737 | 738 | 739 | 740 |
| 741 | 742 | 743 | 744 |
| 745 | 746 | 747 | 748 |
| 749 | 750 | 751 | 752 |
| 753 | 754 | 755 | 756 |
| 757 | 758 | 759 | 760 |
| 761 | 762 | 763 | 764 |
| 765 | 766 | 767 | 768 |
| 769 | 770 | 771 | 772 |
| 773 | 774 | 775 | 776 |
| 777 | 778 | 779 | 780 |
| 781 | 782 | 783 | 784 |
| 785 | 786 | 787 | 788 |
| 789 | 790 | 791 | 792 |
| 793 | 794 | 795 | 796 |
| 797 | 798 | 799 | 800 |
| 801 | 802 | 803 | 804 |
| 805 | 806 | 807 | 808 |
| 809 | 810 | 811 | 812 |
| 813 | 814 | 815 | 816 |
| 817 | 818 | 819 | 820 |
| 821 | 822 | 823 | 824 |
| 825 | 826 | 827 | 828 |
| 829 | 830 | 831 | 832 |
| 833 | 834 | 835 | 836 |
| 837 | 838 | 839 | 840 |
| 841 | 842 | 843 | 844 |
| 845 | 846 | 847 | 848 |
| 849 | 850 | 851 | 852 |
| 853 | 854 | 855 | 856 |
| 857 | 858 | 859 | 860 |
| 861 | 862 | 863 | 864 |
| 865 | 866 | 867 | 868 |
| 869 | 870 | 871 | 872 |
| 873 | 874 | 875 | 876 |
| 877 | 878 | 879 | 880 |
| 881 | 882 | 883 | 884 |
| 885 | 886 | 887 | 888 |
| 889 | 890 | 891 | 892 |
| 893 | 894 | 895 | 896 |
| 897 | 898 | 899 | 900 |
| 901 | 902 | 903 | 904 |
| 905 | 906 | 907 | 908 |
| 909 | 910 | 911 | 912 |
| 913 | 914 | 915 | 916 |
| 917 | 918 | 919 | 920 |
| 921 | 922 | 923 | 924 |
| 925 | 926 | 927 | 928 |
| 929 | 930 | 931 | 932 |
| 933 | 934 | 935 | 936 |
| 937 | 938 | 939 | 940 |
| 941 | 942 | 943 | 944 |
| 945 | 946 | 947 | 948 |
| 949 | 950 | 951 | 952 |
| 953 | 954 | 955 | 956 |
| 957 | 958 | 959 | 960 |
| 961 | 962 | 963 | 964 |
| 965 | 966 | 967 | 968 |
| 969 | 970 | 971 | 972 |
| 973 | 974 | 975 | 976 |
| 977 | 978 | 979 | 980 |
| 981 | 982 | 983 | 984 |
| 985 | 986 | 987 | 988 |
| 989 | 990 | 991 | 992 |
| 993 | 994 | 995 | 996 |
| 997 | 998 | 999 | 1000 |

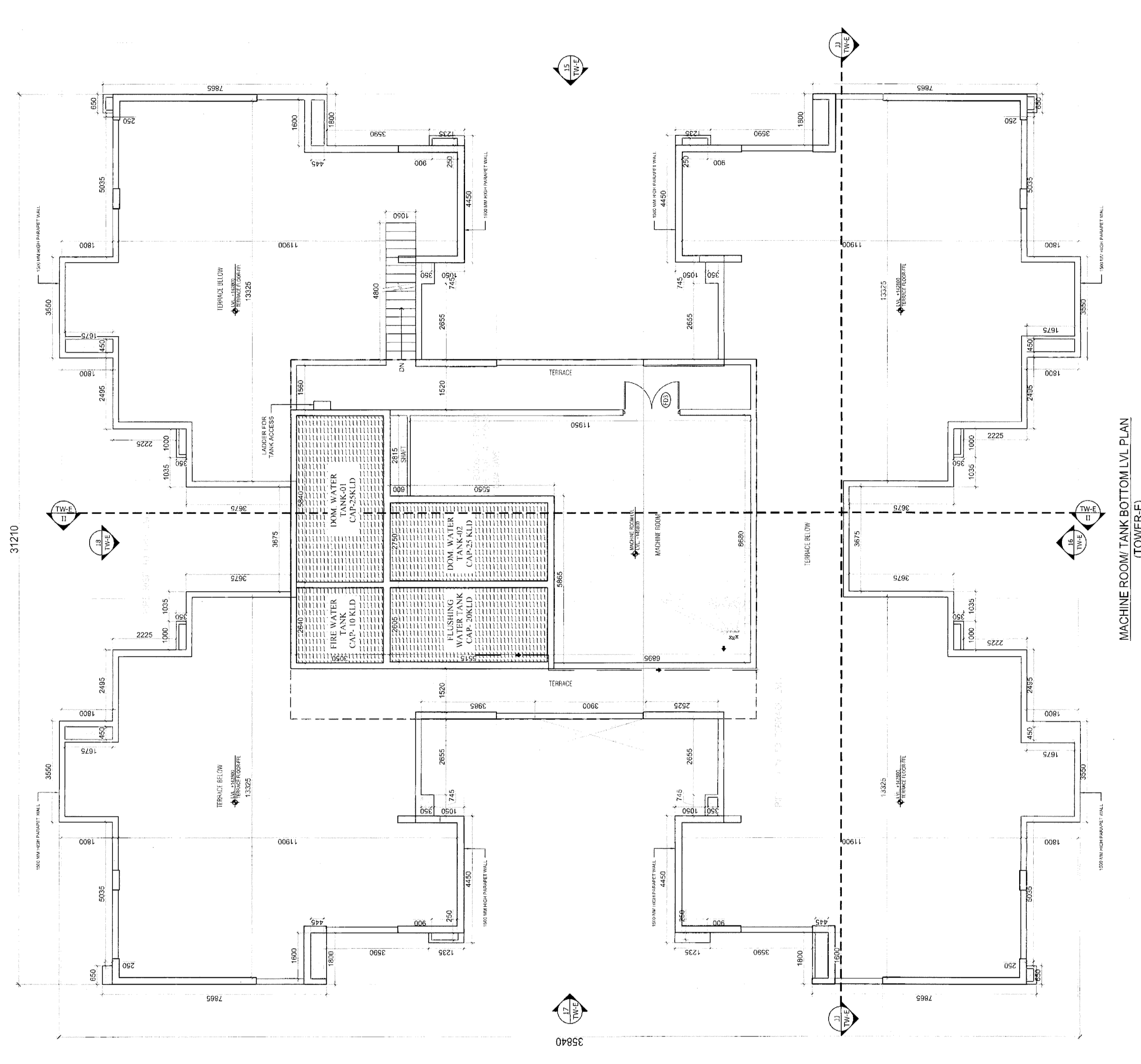
REQUIRED REFUGE AREA = AREA OF FLOOR AREA
 = 33,070.00 SQ. M.
 PROVIDED REFUGE AREA = 38,430 SQ. M.



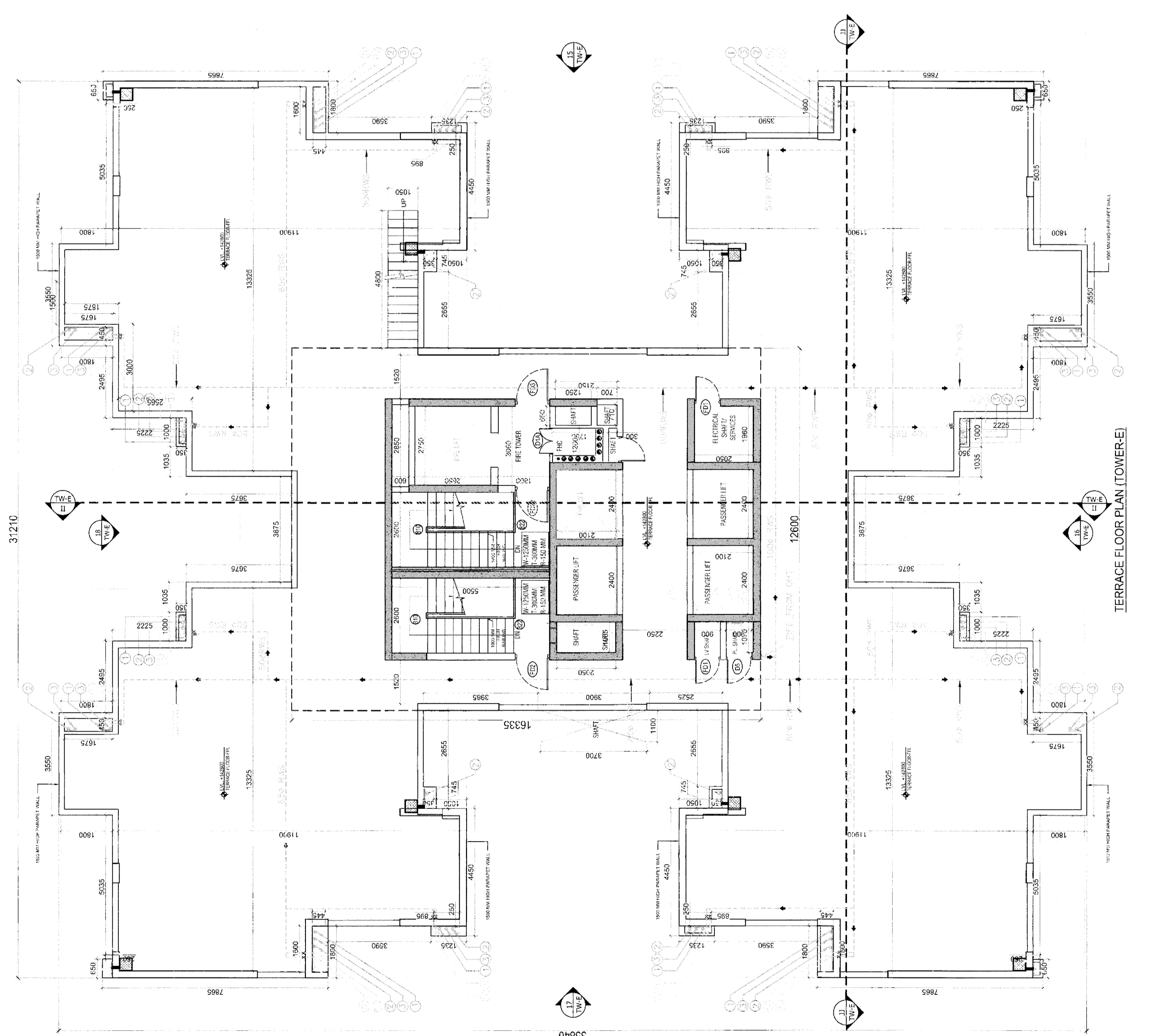
| SERVICE PERSONAL UNIT CARPET AREA CALCULATIONS | | | |
|--|------------------------------|-----------|------------|
| S. No. | DESCRIPTION | WIDTH (M) | LENGTH (M) |
| 1 | 1ST FLOOR FFL (REFUGE FLOOR) | 1.00 | 1.00 |
| 2 | 2ND FLOOR FFL (REFUGE FLOOR) | 1.00 | 1.00 |
| 3 | 3RD FLOOR FFL (REFUGE FLOOR) | 1.00 | 1.00 |
| 4 | TOTAL ADDITION | | 3.00 |

| TOWER | | | |
|--------|-------------------------------|-------|------------|
| S. No. | DESCRIPTION | LEVEL | HEIGHT (M) |
| 1 | 18TH FLOOR FFL (REFUGE FLOOR) | 18 | 3.00 |
| 2 | 28TH FLOOR FFL (REFUGE FLOOR) | 28 | 3.00 |
| 3 | 37TH FLOOR FFL (REFUGE FLOOR) | 37 | 3.00 |
| 4 | TOTAL ADDITION | | 9.00 |

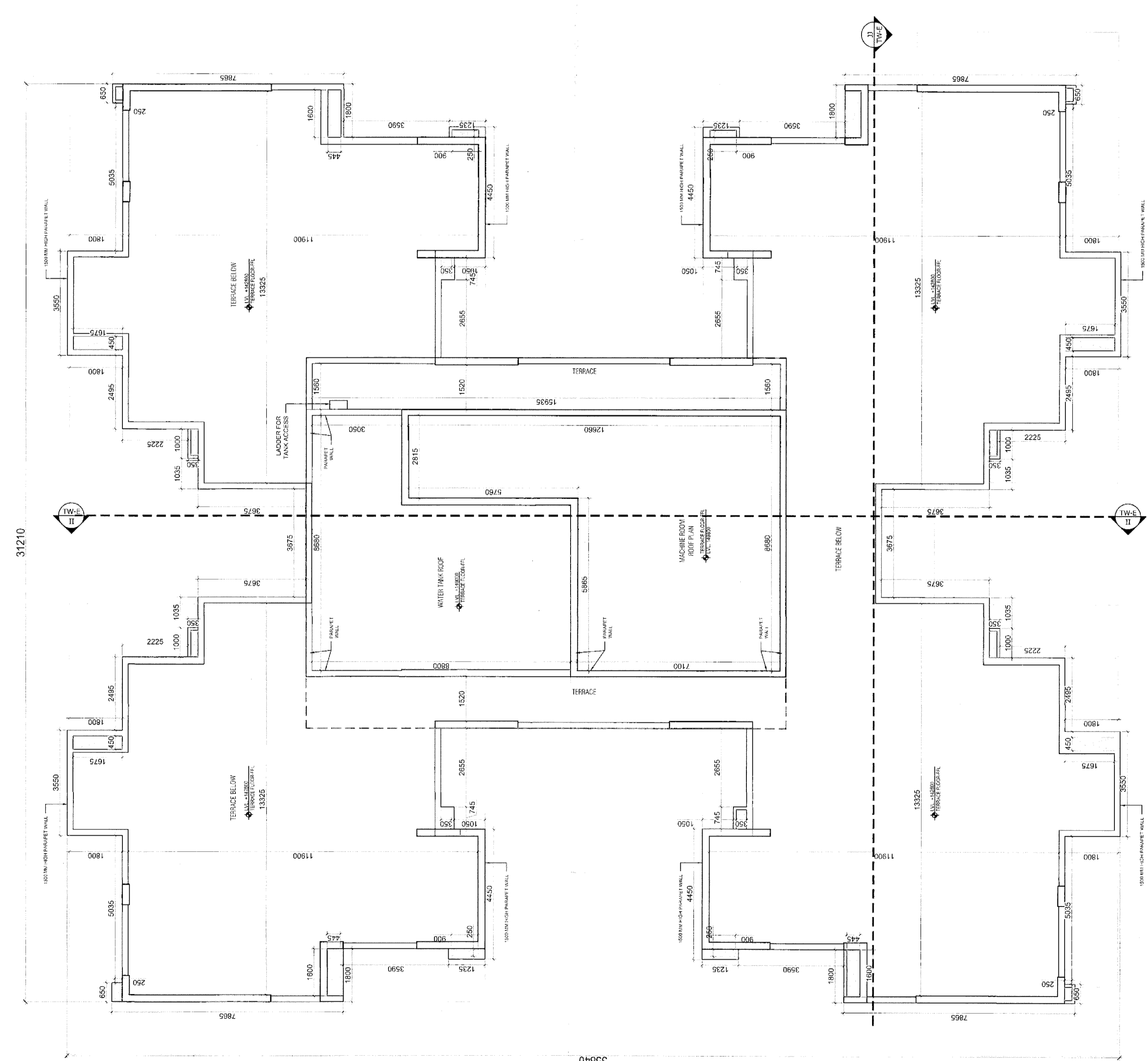
| DOOR WINDOW SCHEDULE | | | |
|----------------------|------|-----------|---------|
| SNO | ITEM | SIZE | REMARKS |
| 1 | D1 | 1000X2000 | 0 |
| 2 | D2 | 1000X2000 | 0 |
| 3 | D3 | 1000X2000 | 0 |
| 4 | D4 | 1000X2000 | |



MACHINE ROOM TANK BOTTOM LUL PLAN (CONCRETE)



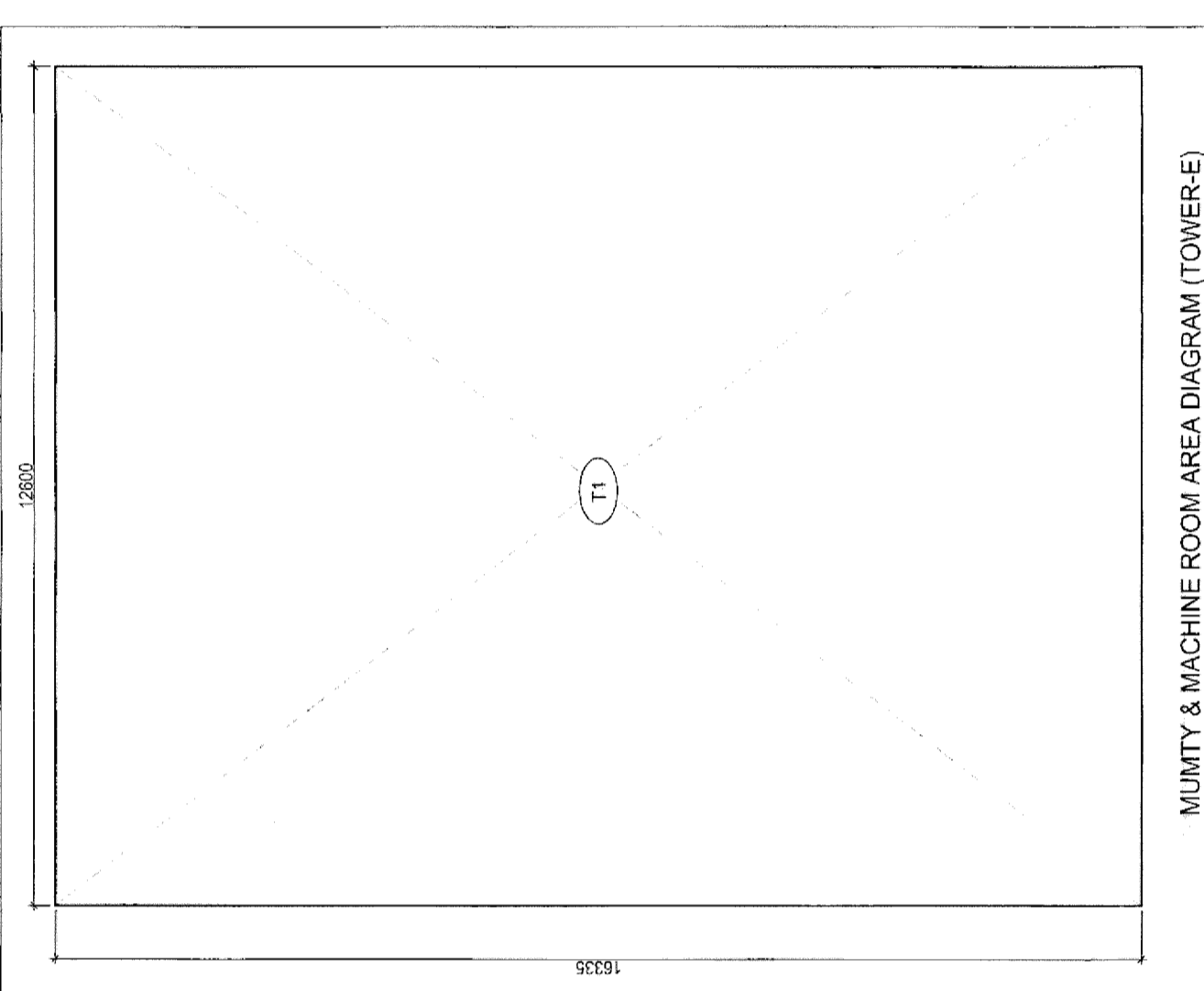
TERRACE FLOOR PLAN (TOWER-E)



WATER TANK / MACHINE ROOM ROOF PLAN (CONCRETE)

LEGEND:

| FLAMING LEGEND | SYMBOL | DESCRIPTION |
|-------------------------------------|--------|---------------|
| ① 110# OD UPVC SP STACK | ○ | WASTE PIPE |
| ② 110# OD UPVC WP STACK | ○ | FLOOR TRAP |
| ③ 160# OD UPVC WP STACK FOR KITCHEN | ○ | C/OUT |
| ④ 110# OD UPVC A-SP | ○ | FLOOR DRAIN |
| ⑤ 110# OD UPVC N-W/P | ○ | CVS. PIPE |
| ⑥ 110# UPVC FRAM THT (BALCONY) | ○ | FMC PIPE |
| ⑦ 110# UPVC FRAM THT (BALCONY) | ○ | COOKING VALVE |



MURTY & MACHINE ROOM AREA DIAGRAM (TOWER-E)

DOOR WINDOW SCHEDULE

| S.No | ITEM | SIZE | LEVEL | REMARKS | |
|------|------|----------|-------|---------|--------------------------|
| 1 | D1 | 1000x400 | 0 | 2400 | ONE HOUR FIRE RATED DOOR |
| 2 | D2 | 1000x400 | 0 | 2400 | ONE HOUR FIRE RATED DOOR |
| 3 | D3 | 800x400 | 0 | 2400 | ONE HOUR FIRE RATED DOOR |
| 4 | D4 | 2000x400 | 0 | 2400 | ONE HOUR FIRE RATED DOOR |
| 5 | D5 | 2000x400 | 0 | 2400 | ONE HOUR FIRE RATED DOOR |
| 6 | D6 | 2000x400 | 0 | 2400 | ONE HOUR FIRE RATED DOOR |
| 7 | D7 | 2000x400 | 0 | 2400 | ONE HOUR FIRE RATED DOOR |
| 8 | D8 | 2000x400 | 0 | 2400 | ONE HOUR FIRE RATED DOOR |
| 9 | D9 | 2000x400 | 0 | 2400 | ONE HOUR FIRE RATED DOOR |
| 10 | D10 | 2000x400 | 0 | 2400 | ONE HOUR FIRE RATED DOOR |
| 11 | D11 | 2000x400 | 0 | 2400 | ONE HOUR FIRE RATED DOOR |
| 12 | D12 | 2000x400 | 0 | 2400 | ONE HOUR FIRE RATED DOOR |
| 13 | D13 | 2000x400 | 0 | 2400 | ONE HOUR FIRE RATED DOOR |
| 14 | D14 | 2000x400 | 0 | 2400 | ONE HOUR FIRE RATED DOOR |
| 15 | D15 | 2000x400 | 0 | 2400 | ONE HOUR FIRE RATED DOOR |
| 16 | D16 | 2000x400 | 0 | 2400 | ONE HOUR FIRE RATED DOOR |
| 17 | D17 | 2000x400 | 0 | 2400 | ONE HOUR FIRE RATED DOOR |
| 18 | D18 | 2000x400 | 0 | 2400 | ONE HOUR FIRE RATED DOOR |
| 19 | D19 | 2000x400 | 0 | 2400 | ONE HOUR FIRE RATED DOOR |
| 20 | D20 | 2000x400 | 0 | 2400 | ONE HOUR FIRE RATED DOOR |
| 21 | D21 | 2000x400 | 0 | 2400 | ONE HOUR FIRE RATED DOOR |
| 22 | D22 | 2000x400 | 0 | 2400 | ONE HOUR FIRE RATED DOOR |
| 23 | D23 | 2000x400 | 0 | 2400 | ONE HOUR FIRE RATED DOOR |
| 24 | D24 | 2000x400 | 0 | 2400 | ONE HOUR FIRE RATED DOOR |
| 25 | D25 | 2000x400 | 0 | 2400 | ONE HOUR FIRE RATED DOOR |
| 26 | D26 | 2000x400 | 0 | 2400 | ONE HOUR FIRE RATED DOOR |
| 27 | D27 | 2000x400 | 0 | 2400 | ONE HOUR FIRE RATED DOOR |
| 28 | D28 | 2000x400 | 0 | 2400 | ONE HOUR FIRE RATED DOOR |

ABILITY & EXISTING ROOM AREA CALCULATIONS

| S. No | DESCRIPTION | WIDTH | DEPTH | AREA | REMARKS |
|-------|-------------|-------|-------|--------|---------|
| 1 | 1 | 5.1 | 2.250 | 11.475 | 251.831 |
| 2 | 2 | 5.1 | 2.250 | 11.475 | 251.831 |
| 3 | 3 | 5.1 | 2.250 | 11.475 | 251.831 |
| 4 | 4 | 5.1 | 2.250 | 11.475 | 251.831 |
| 5 | 5 | 5.1 | 2.250 | 11.475 | 251.831 |
| 6 | 6 | 5.1 | 2.250 | 11.475 | 251.831 |
| 7 | 7 | 5.1 | 2.250 | 11.475 | 251.831 |
| 8 | 8 | 5.1 | 2.250 | 11.475 | 251.831 |
| 9 | 9 | 5.1 | 2.250 | 11.475 | 251.831 |
| 10 | 10 | 5.1 | 2.250 | 11.475 | 251.831 |
| 11 | 11 | 5.1 | 2.250 | 11.475 | 251.831 |
| 12 | 12 | 5.1 | 2.250 | 11.475 | 251.831 |
| 13 | 13 | 5.1 | 2.250 | 11.475 | 251.831 |
| 14 | 14 | 5.1 | 2.250 | 11.475 | 251.831 |
| 15 | 15 | 5.1 | 2.250 | 11.475 | 251.831 |
| 16 | 16 | 5.1 | 2.250 | 11.475 | 251.831 |
| 17 | 17 | 5.1 | 2.250 | 11.475 | 251.831 |
| 18 | 18 | 5.1 | 2.250 | 11.475 | 251.831 |
| 19 | 19 | 5.1 | 2.250 | 11.475 | 251.831 |
| 20 | 20 | 5.1 | 2.250 | 11.475 | 251.831 |
| 21 | 21 | 5.1 | 2.250 | 11.475 | 251.831 |
| 22 | 22 | 5.1 | 2.250 | 11.475 | 251.831 |
| 23 | 23 | 5.1 | 2.250 | 11.475 | 251.831 |
| 24 | 24 | 5.1 | 2.250 | 11.475 | 251.831 |
| 25 | 25 | 5.1 | 2.250 | 11.475 | 251.831 |
| 26 | 26 | 5.1 | 2.250 | 11.475 | 251.831 |
| 27 | 27 | 5.1 | 2.250 | 11.475 | 251.831 |
| 28 | 28 | 5.1 | 2.250 | 11.475 | 251.831 |
| 29 | 29 | 5.1 | 2.250 | 11.475 | 251.831 |
| 30 | 30 | 5.1 | 2.250 | 11.475 | 251.831 |
| 31 | 31 | 5.1 | 2.250 | 11.475 | 251.831 |
| 32 | 32 | 5.1 | 2.250 | 11.475 | 251.831 |
| 33 | 33 | 5.1 | 2.250 | 11.475 | 251.831 |
| 34 | 34 | 5.1 | 2.250 | 11.475 | 251.831 |
| 35 | 35 | 5.1 | 2.250 | 11.475 | 251.831 |
| 36 | 36 | 5.1 | 2.250 | 11.475 | 251.831 |
| 37 | 37 | 5.1 | 2.250 | 11.475 | 251.831 |
| 38 | 38 | 5.1 | 2.250 | 11.475 | 251.831 |
| 39 | 39 | 5.1 | 2.250 | 11.475 | 251.831 |
| 40 | 40 | 5.1 | 2.250 | 11.475 | 251.831 |
| 41 | 41 | 5.1 | 2.250 | 11.475 | 251.831 |
| 42 | 42 | 5.1 | 2.250 | 11.475 | 251.831 |
| 43 | 43 | 5.1 | 2.250 | 11.475 | 251.831 |
| 44 | 44 | 5.1 | 2.250 | 11.475 | 251.831 |
| 45 | 45 | 5.1 | 2.250 | 11.475 | 251.831 |
| 46 | 46 | 5.1 | 2.250 | 11.475 | 251.831 |
| 47 | 47 | 5.1 | 2.250 | 11.475 | 251.831 |
| 48 | 48 | 5.1 | 2.250 | 11.475 | 251.831 |
| 49 | 49 | 5.1 | 2.250 | 11.475 | 251.831 |
| 50 | 50 | 5.1 | 2.250 | 11.475 | 251.831 |
| 51 | 51 | 5.1 | 2.250 | 11.475 | 251.831 |
| 52 | 52 | 5.1 | 2.250 | 11.475 | 251.831 |
| 53 | 53 | 5.1 | 2.250 | 11.475 | 251.831 |
| 54 | 54 | 5.1 | 2.250 | 11.475 | 251.831 |
| 55 | 55 | 5.1 | 2.250 | 11.475 | 251.831 |
| 56 | 56 | 5.1 | 2.250 | 11.475 | 251.831 |
| 57 | 57 | 5.1 | 2.250 | 11.475 | 251.831 |
| 58 | 58 | 5.1 | 2.250 | 11.475 | 251.831 |
| 59 | 59 | 5.1 | 2.250 | 11.475 | 251.831 |
| 60 | 60 | 5.1 | 2.250 | 11.475 | 251.831 |
| 61 | 61 | 5.1 | 2.250 | 11.475 | 251.831 |
| 62 | 62 | 5.1 | 2.250 | 11.475 | 251.831 |
| 63 | 63 | 5.1 | 2.250 | 11.475 | 251.831 |
| 64 | 64 | 5.1 | 2.250 | 11.475 | 251.831 |
| 65 | 65 | 5.1 | 2.250 | 11.475 | 251.831 |
| 66 | 66 | 5.1 | 2.250 | 11.475 | 251.831 |
| 67 | 67 | 5.1 | 2.250 | 11.475 | 251.831 |
| 68 | 68 | 5.1 | 2.250 | 11.475 | 251.831 |
| 69 | 69 | 5.1 | 2.250 | 11.475 | 251.831 |
| 70 | 70 | 5.1 | 2.250 | 11.475 | 251.831 |
| 71 | 71 | 5.1 | 2.250 | 11.475 | 251.831 |
| 72 | 72 | 5.1 | 2.250 | 11.475 | 251.831 |
| 73 | 73 | 5.1 | 2.250 | 11.475 | 251.831 |
| 74 | 74 | 5.1 | 2.250 | 11.475 | 251.831 |
| 75 | 75 | 5.1 | 2.250 | 11.475 | 251.831 |
| 76 | 76 | 5.1 | 2.250 | 11.475 | 251.831 |
| 77 | 77 | 5.1 | 2.250 | 11.475 | 251.831 |
| 78 | 78 | 5.1 | 2.250 | 11.475 | 251.831 |
| 79 | 79 | 5.1 | 2.250 | 11.475 | 251.831 |
| 80 | 80 | 5.1 | 2.250 | 11.475 | 251.831 |
| 81 | 81 | 5.1 | 2.250 | 11.475 | 251.831 |
| 82 | 82 | 5.1 | 2.250 | 11.475 | 251.831 |
| 83 | 83 | 5.1 | 2.250 | 11.475 | 251.831 |
| 84 | 84 | 5.1 | 2.250 | 11.475 | 251.831 |
| 85 | 85 | 5.1 | 2.250 | 11.475 | 251.831 |
| 86 | 86 | 5.1 | 2.250 | 11.475 | 251.831 |
| 87 | 87 | 5.1 | 2.250 | 11.475 | 251.831 |
| 88 | 88 | 5.1 | 2.250 | 11.475 | 251.831 |
| 89 | 89 | 5.1 | 2.250 | 11.475 | 251.831 |
| 90 | 90 | 5.1 | 2.250 | 11.475 | 251.831 |
| 91 | 91 | 5.1 | 2.250 | 11.475 | 251.831 |
| 92 | 92 | 5.1 | 2.250 | 11.475 | 251.831 |
| 93 | 93 | 5.1 | 2.250 | 11.475 | 251.831 |
| 94 | 94 | 5.1 | 2.250 | 11.475 | 251.831 |
| 95 | 95 | 5.1 | 2.250 | 11.475 | 251.831 |
| 96 | 96 | 5.1 | 2.250 | 11.475 | 251.831 |
| 97 | 97 | 5.1 | 2.250 | 11.475 | 251.831 |
| 98 | 98 | 5.1 | 2.250 | 11.475 | 251.831 |
| 99 | 99 | 5.1 | 2.250 | 11.475 | 251.831 |
| 100 | 100 | 5.1 | 2.250 | 11.475 | 251.831 |

REFUGEE FLOOR DETAIL

| S. No | DESCRIPTION | WIDTH | DEPTH | AREA | REMARKS |
|-------|-------------|-------|-------|--------|---------|
| 1 | 1 | 5.1 | 2.250 | 11.475 | 251.831 |
| 2 | 2 | 5.1 | 2.250 | 11.475 | 251.831 |
| 3 | 3 | 5.1 | 2.250 | 11.475 | 251.831 |
| 4 | 4 | 5.1 | 2.250 | 11.475 | 251.831 |
| 5 | 5 | 5.1 | 2.250 | 11.475 | 251.831 |
| 6 | 6 | 5.1 | 2.250 | 11.475 | 251.831 |
| 7 | 7 | 5.1 | 2.250 | 11.475 | 251.831 |
| 8 | 8 | 5.1 | 2.250 | 11.475 | 251.831 |
| 9 | 9 | 5.1 | 2.250 | 11.475 | 251.831 |
| 10 | 10 | 5.1 | 2.250 | 11.475 | 251.831 |
| 11 | 11 | 5.1 | 2.250 | 11.475 | 251.831 |
| 12 | 12 | 5.1 | 2.250 | 11.475 | 251.831 |
| 13 | 13 | 5.1 | 2.250 | 11.475 | 251.831 |
| 14 | 14 | 5.1 | 2.250 | 11.475 | 251.831 |
| 15 | 15 | 5.1 | 2.250 | 11.475 | 251.831 |
| 16 | 16 | 5.1 | 2.250 | 11.475 | 251.831 |
| 17 | 17 | 5.1 | 2.250 | 11.475 | 251.831 |
| 18 | 18 | 5.1 | 2.250 | 11.475 | 251.831 |
| 19 | 19 | 5.1 | 2.250 | 11.475 | 251.831 |
| 20 | 20 | 5.1 | 2.250 | 11.475 | 251.831 |
| 21 | 21 | 5.1 | 2.250 | 11.475 | 251.831 |
| 22 | 22 | 5.1 | 2.250 | 11.475 | 251.831 |
| 23 | 23 | 5.1 | 2.250 | 11.475 | 251.831 |
| 24 | 24 | 5.1 | 2.250 | 11.475 | 251.831 |
| 25 | 25 | 5.1 | 2.250 | 11.475 | 251.831 |
| 26 | 26 | 5.1 | 2.250 | 11.475 | 251.831 |
| 27 | 27 | 5.1 | 2.250 | 11.475 | 251.831 |
| 28 | 28 | 5.1 | 2.250 | 11.475 | 251.831 |
| 29 | 29 | 5.1 | 2.250 | 11.475 | 251.831 |
| 30 | 30 | 5.1 | 2.250 | 11.475 | 251.831 |
| 31 | 31 | 5.1 | 2.250 | 11.475 | 251.831 |
| 32 | 32 | 5.1 | 2.250 | 11.475 | 251.831 |
| 33 | 33 | 5.1 | 2.250 | 11.475 | 251.831 |
| 34 | 34 | 5.1 | 2.250 | 11.475 | 251.831 |
| 35 | 35 | 5.1 | 2.250 | 11.475 | 251.831 |
| 36 | 36 | 5.1 | 2.250 | 11.475 | 251.831 |
| 37 | 37 | 5.1 | 2.250 | 11.475 | 251.831 |
| 38 | 38 | 5.1 | 2.250 | 11.475 | 251.831 |
| 39 | 39 | 5.1 | 2.250 | 11.475 | 251.831 |
| 40 | 40 | 5.1 | 2.250 | 11.475 | 251.831 |
| 41 | 41 | 5.1 | 2.250 | 11.475 | 251.831 |
| 42 | 42 | 5.1 | 2.250 | 11.475 | 251.831 |
| 43 | 43 | 5.1 | 2.250 | 11.475 | 251.831 |
| 44 | 44 | 5.1 | 2.250 | 11.475 | 251.831 |
| 45 | 45 | 5.1 | 2.250 | 11.475 | 251.831 |
| 46 | 46 | 5.1 | 2.250 | 11.475 | 251.831 |
| 47 | 47 | 5.1 | 2.250 | 11.475 | 251.831 |
| 48 | 48 | 5.1 | 2.250 | 11.475 | 251.831 |
| 49 | 49 | 5.1 | 2.250 | 11.475 | 251.831 |
| 50 | 50 | 5.1 | 2.250 | 11.475 | 251.831 |
| 51 | 51 | 5.1 | 2.250 | 11.475 | 251.831 |
| 52 | 52 | 5.1 | 2.250 | 11.475 | 251.831 |
| 53 | 53 | 5.1 | 2.250 | 11.475 | 251.831 |
| 54 | 54 | 5.1 | 2.250 | 11.475 | 251.831 |
| 55 | 55 | 5.1 | 2.250 | 11.475 | 251.831 |
| 56 | 56 | 5.1 | 2.250 | 11.475 | 251.831 |
| 57 | 57 | 5.1 | 2.250 | 11.475 | 251.831 |
| 58 | 58 | 5.1 | 2.250 | 11.475 | 251.831 |
| 59 | 59</ | | | | |