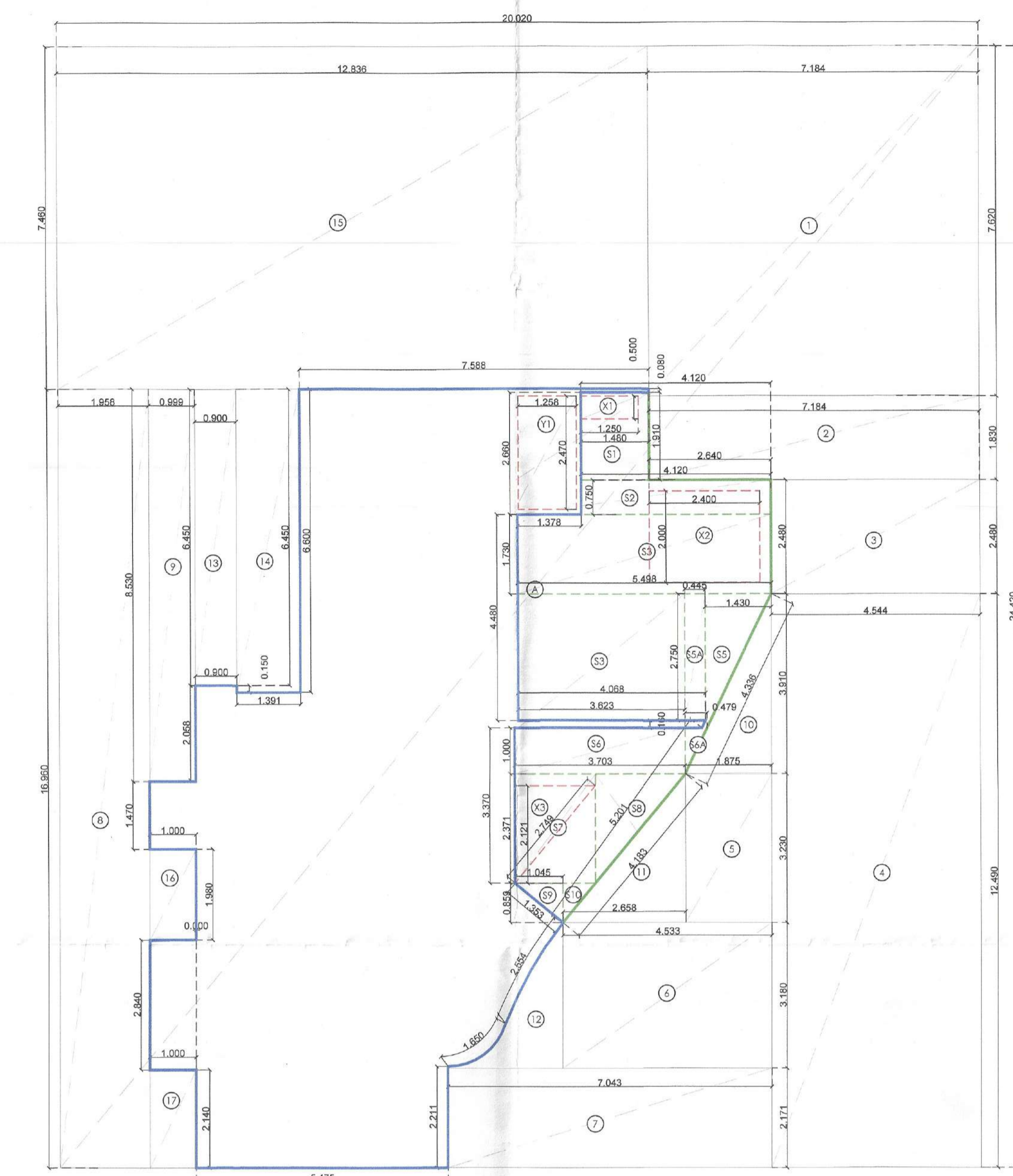
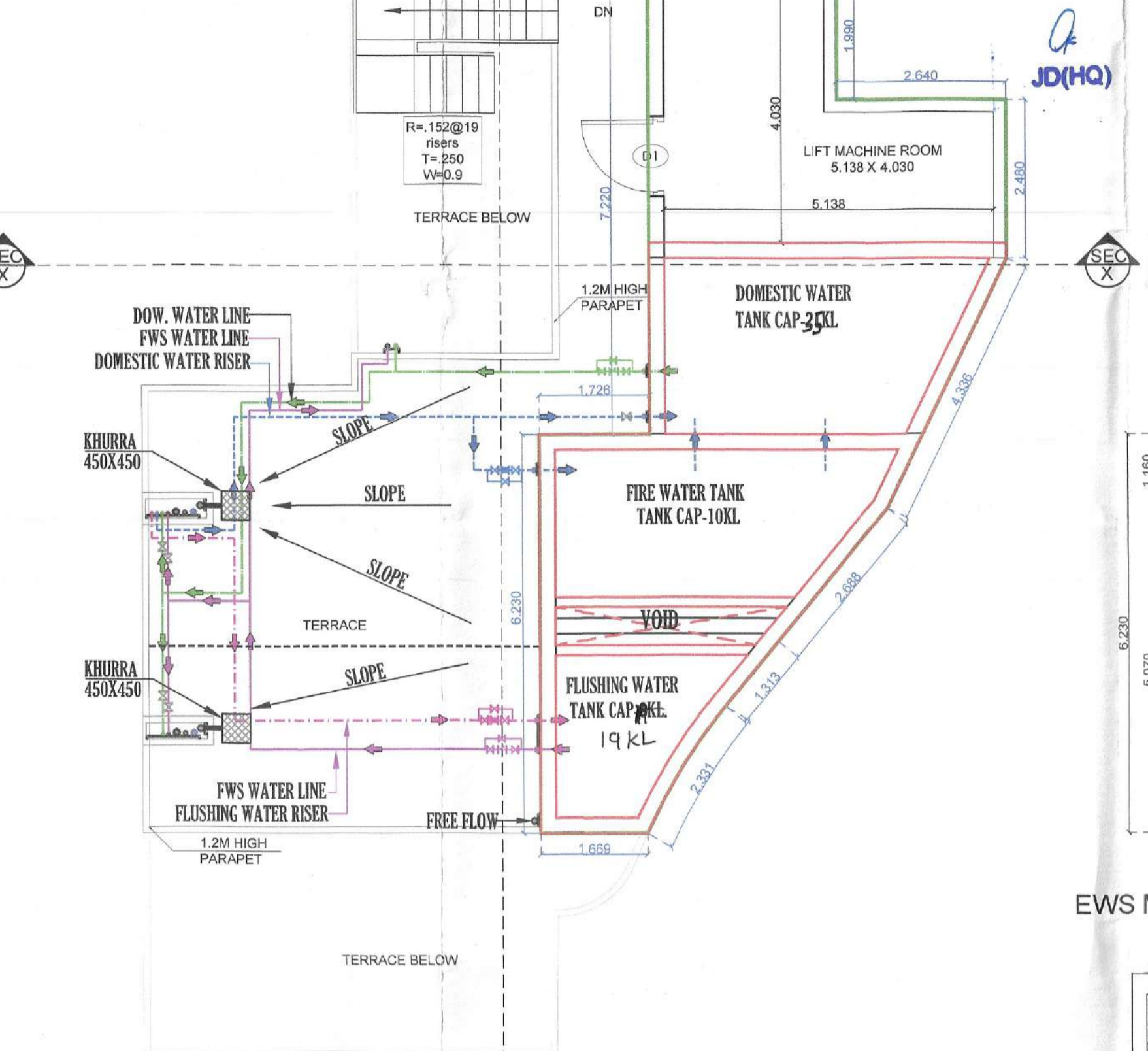


EWS TYPICAL 17TH TO 19TH FLOOR PLAN (12 UNITS)



EWS TYPICAL 17TH TO 19TH FLOOR PLAN (12 UNITS) AREA DIAGRAM

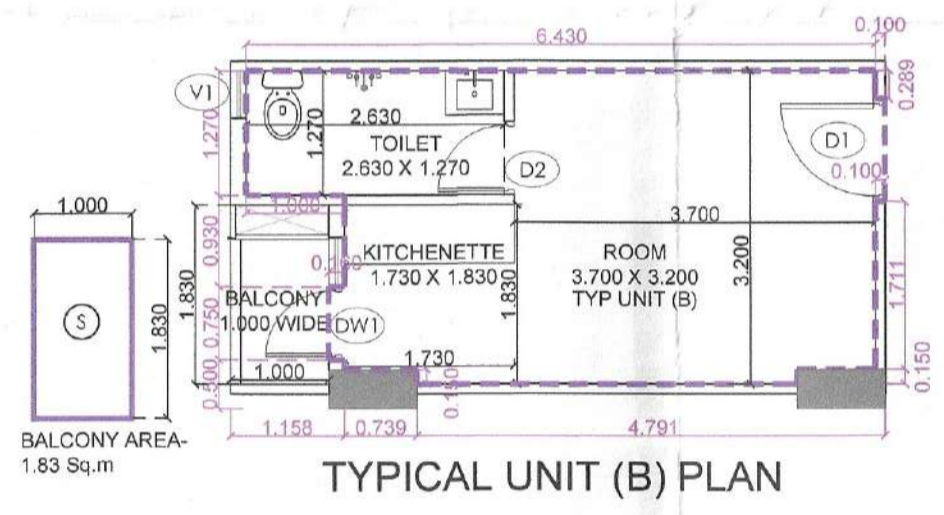
EWS FAR AREA AT TYPICAL (17TH-19TH FLOOR)				
(All Distances are in Meter & Areas in Sqm)				
<b>ADDITIONS (A)</b>				
ITEM	NO.S	WIDTH (MTR.)	LENGTH (MTR.)	AREA(SQ.MT.) = NO.X LENGTH X WIDTH
A	1	20.000	24.420	488.880
<b>TOTAL</b>				
<b>488.880</b>				
<b>DEDUCTIONS (B)</b>				
ITEM	NO.S	WIDTH (MTR.)	LENGTH (MTR.)	AREA(SQ.MT.) = NO.X LENGTH X WIDTH
1	1	1.154	7.650	8.823
2	1	1.154	1.930	2.228
3	1	2.544	2.480	6.309
4	1	2.544	12.490	31.755
5	1	1.878	3.330	6.256
6	1	2.532	3.960	10.027
7	1	7.043	2.171	15.293
8	1	1.858	18.060	33.350
9	1	2.990	8.500	25.425
10	1	1.878	3.510	6.611
11	1	2.658	3.330	8.852
12	1	1.154	1.930	2.228
13	1	2.990	6.450	19.285
14	1	1.391	8.650	11.983
15	1	1.752	7.490	13.021
16	1	1.000	1.600	1.600
17	1	1.000	2.140	2.140
18	1	1.520	2.410	3.664
<b>TOTAL</b>				
<b>343.118</b>				
<b>NON FAR - STAIRCASE FIRE TOWER (C)</b>				
ITEM	NO.S	WIDTH (MTR.)	LENGTH (MTR.)	AREA(SQ.MT.) = NO.X LENGTH X WIDTH
S1	1	1.480	1.990	2.945
S2	1	1.420	2.760	3.919
S3	1	1.420	1.700	2.414
S4	1	3.623	2.760	9.981
S5	1	1.420	2.760	3.919
SSA	1	0.445	2.750	1.224
SSB	1	3.703	1.000	3.703
SSA	1	1.000	0.479	0.479
SSB	1	1.752	2.371	4.154
SSC	1	1.951	2.371	4.625
SSD	1	1.043	0.899	0.938
S10	1	0.707	0.899	0.634
<b>TOTAL (C)</b>				
<b>39.743</b>				
<b>DEDUCTIONS FROM NON FAR - SHAFTS (D)</b>				
ITEM	NO.S	WIDTH (MTR.)	LENGTH (MTR.)	AREA(SQ.MT.) = NO.X LENGTH X WIDTH
D1	1	1.250	0.550	0.688
D2	1	2.400	2.000	4.800
D3	1	1.752	1.100	1.927
<b>TOTAL (D)</b>				
<b>6.415</b>				
<b>TOTAL NON FAR AREA CALCULATION = (A) - (B) - (C) + (D)</b>				
<b>488.880 - 382.857 = 106.023</b>				
<b>106.023 SQ.MT</b>				



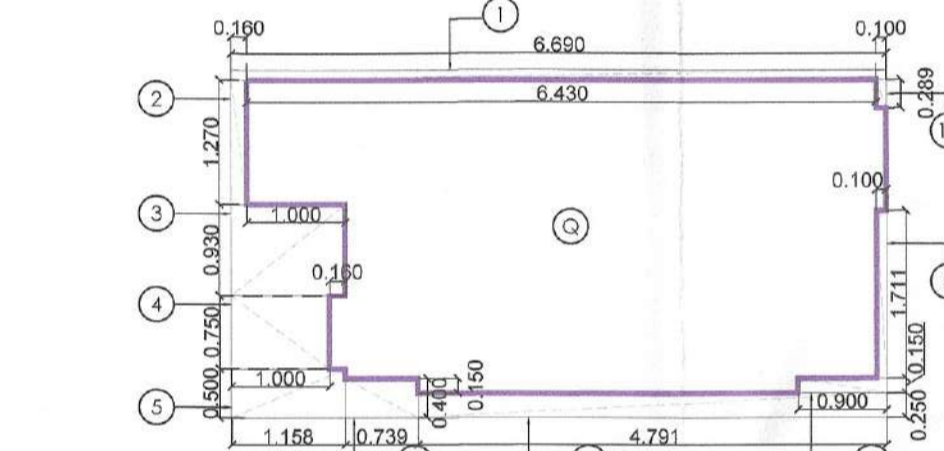
EWS MACHINE ROOM & WATER TANK

EWS TERRACE, MUMTY MACHINE ROOM & WATER TANK AREA				
(All Distances are in Meter & Areas in Sqm)				
<b>ADDITION</b>				
ITEM	NO.S	WIDTH (MTR.)	LENGTH (MTR.)	AREA(SQ.MT.) = NO.X LENGTH X WIDTH
S1	1	2.938	1.990	5.947
S2	1	5.578	2.490	13.883
S3	1	4.259	2.750	11.712
S4	1	1.319	2.750	3.627
S5	1	5.429	1.160	6.298
S6	1	1.669	5.070	8.482
S7	1	2.151	1.955	4.206
S8	1	1.075	1.300	1.407
S9	1	1.609	1.955	3.153
S10	1	PLINE		0.703
S11	1	PLINE		0.886
S12	1	0.555	1.180	0.655
<b>TOTAL NON FAR AREA CALCULATION</b>				
<b>67.962</b>				

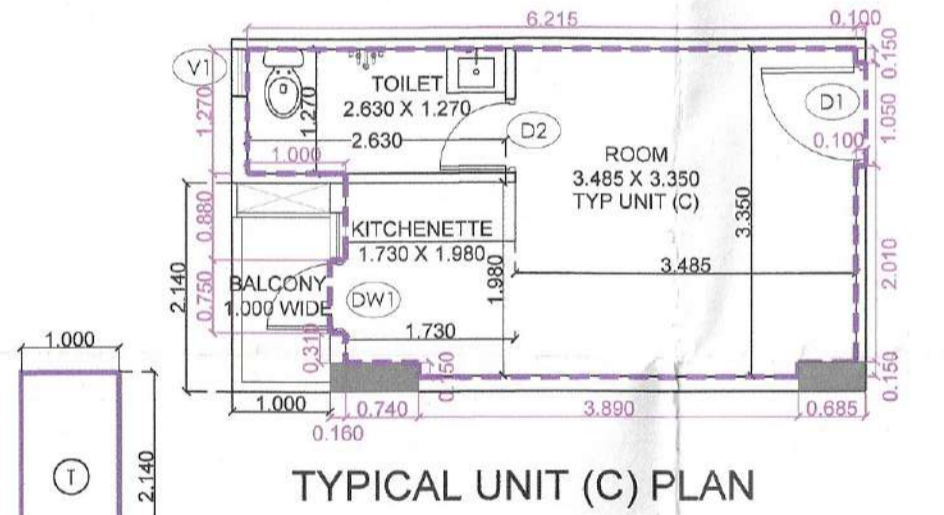
TYPICAL UNIT - CARPET AREA (B)				
ITEM	NO.S	WIDTH (MTR.)	LENGTH (MTR.)	AREA(SQ.MT.) = NO.X LENGTH X WIDTH
B	1	6.800	3.650	24.720
<b>DEDUCTIONS (B)</b>				
1	1	0.900	0.100	0.090
2	1	1.270	0.180	0.228
3	1	1.160	0.060	0.070
4	1	1.750	1.000	1.750
5	1	2.990	1.180	3.528
6	1	2.750	0.400	1.100
7	1	4.791	0.250	1.198
8	1	0.900	0.200	0.180
9	1	1.711	0.100	0.171
10	1	1.288	0.100	0.129
<b>TOTAL</b>				
<b>28.188</b>				
<b>TOTAL CARPET AREA CALCULATION = ADDITIONAL - DEDUCTION</b>				
<b>18.551 SQ.MT</b>				



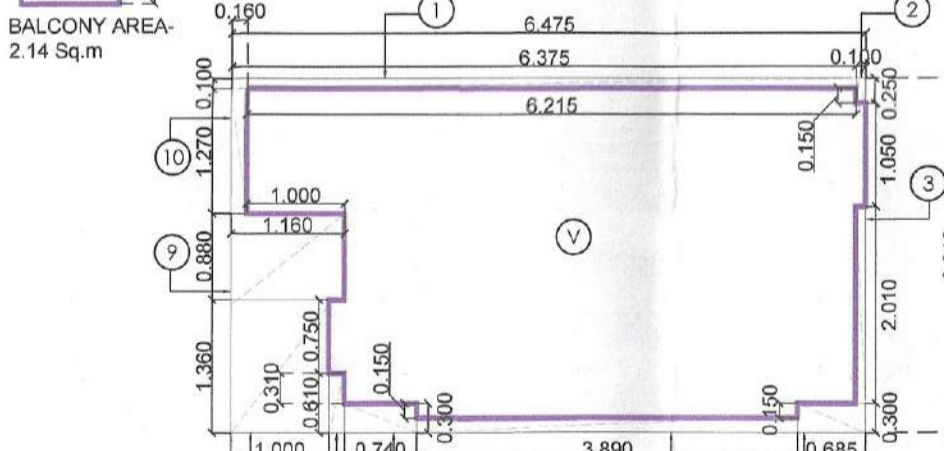
TYPICAL UNIT (B) PLAN



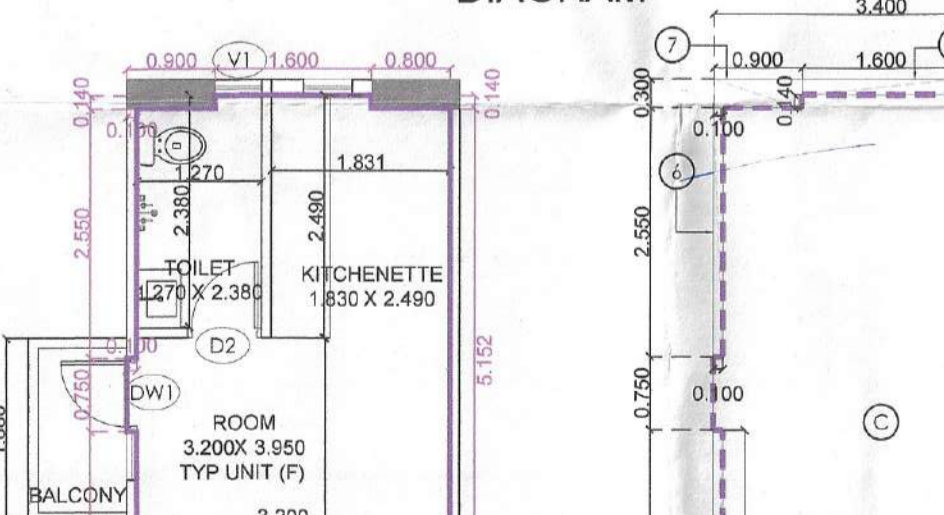
TYPICAL UNIT CARPET AREA (B) DIAGRAM



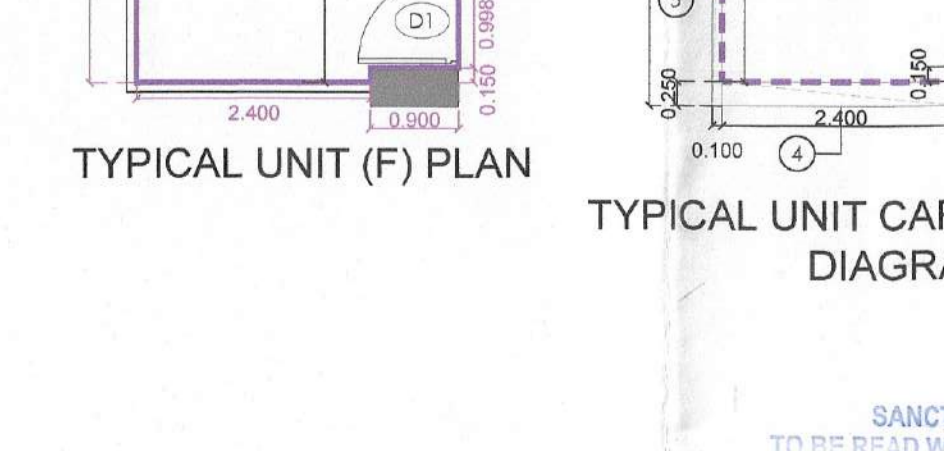
TYPICAL UNIT (C) PLAN



TYPICAL UNIT CARPET AREA (C) DIAGRAM

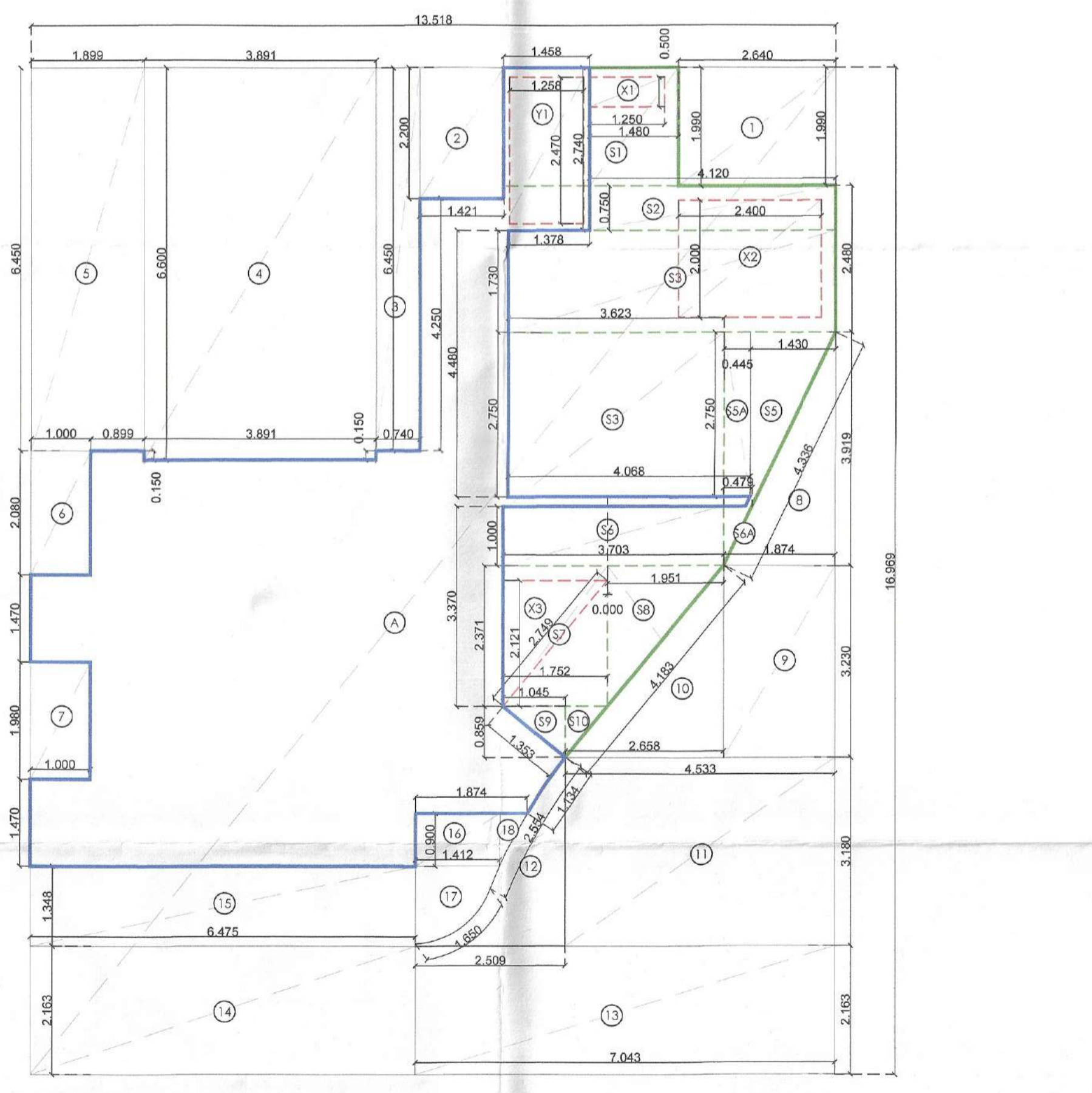


TYPICAL UNIT (F) PLAN

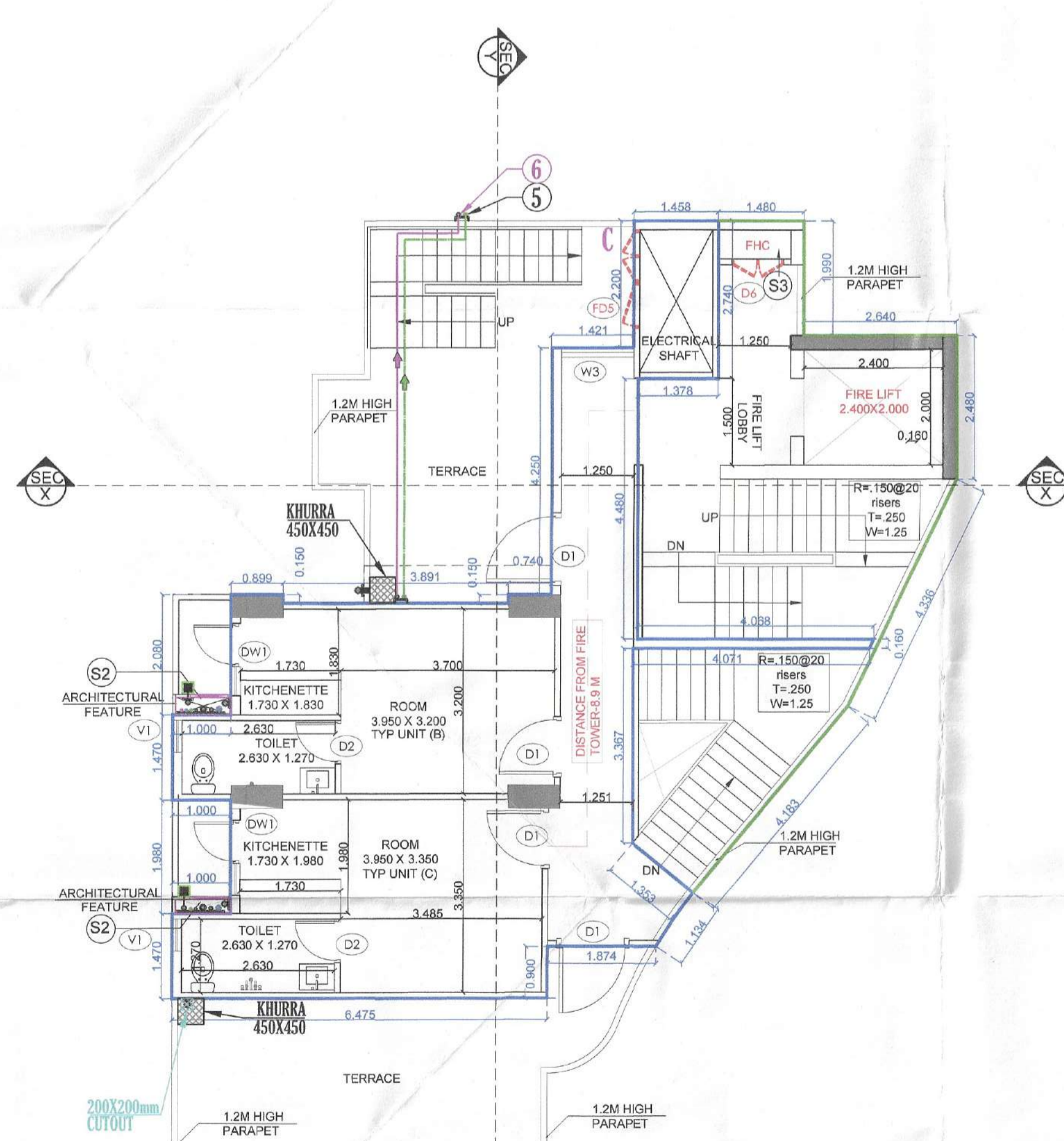


TYPICAL UNIT CARPET AREA (F) DIAGRAM

EWS FAR AREA AT TYPICAL (20TH FLOOR)				
(All Distances are in Meter & Areas in Sqm)				
<b>ADDITIONS (A)</b>				
ITEM	NO.S	WIDTH (MTR.)	LENGTH (MTR.)	AREA(SQ.MT.) = NO.X LENGTH X WIDTH
A	1	13.518	16.968	229.387
<b>TOTAL</b>				
<b>229.387</b>				
<b>DEDUCTIONS (B)</b>				
ITEM	NO.S	WIDTH (MTR.)	LENGTH (MTR.)	AREA(SQ.MT.) = NO.X LENGTH X WIDTH
1	1	2.660	1.990	5.293
2	1	1.411	2.200	3.104
3	1	0.740	6.490	4.773
4	1	3.891	8.650	33.661
5	1	1.959	6.450	12.556
6	1	1.000	2.080	2.080
7	1	1.980	1.980	3.922
8	1	1.874	3.979	7.457
9	1	1.874	3.250	6.099
10	1	2.580	3.250	8.398
11	1	4.533	3.160	14.315
12	1	1.000	2.160	2.160
13	1	1.000	2.160	2.160
14	1	6.475	2.163	14.005
15	1	6.475	1.348	8.739
16	1	1.412	0.900	1.271
17	1	PLINE		1.331
18	1	1.308	2.470	3.231
<b>TOTAL</b>				
<b>138.698</b>				
<b>NON FAR - STAIRCASE FIRE TOWER</b>				
ITEM	NO.S	WIDTH (MTR.)	LENGTH (MTR.)	AREA(SQ.MT.) = NO.X LENGTH X WIDTH
S1	1	1.480	1.990	2.945
S2	1	1.420	2.760	3.919
S3	1	1.420	1.700	2.414
S4	1	3.623	2.760	9.981
S5	1	1.420	2.760	3.919
SSA	1	0.445	2.750	1.224
SSB	1	3.703	1.000	3.703
SSA	1	1.000	0.479	0.479
SSB	1	1.752	2.371	4.154
SSC	1	1.951	2.371	4.625
SSD	1	1.043	0.899	0.938
S10	1	0.707	0.899	0.634
<b>TOTAL (C)</b>				
<b>39.848</b>				
<b>DEDUCTIONS FROM NON FAR - SHAFTS (D)</b>				
ITEM	NO.S	WIDTH (MTR.)	LENGTH (MTR.)	AREA(SQ.MT.) = NO.X LENGTH X WIDTH
D1	1	1.250	0.550	0.688
D2	1	2.400	2.000	4.800
D3	1	1.752	1.100	1.927
<b>TOTAL (D)</b>				
<b>6.415</b>				
<b>TOTAL NON FAR AREA CALCULATION = (A) - (B) - (C) + (D)</b>				
<b>229.387 - 170.558 = 58.829</b>				
<b>58.829 SQ.MT</b>				



EWS 20TH (FFL-) FLOOR PLAN (2 UNITS) AREA DIAGRAM



EWS 20TH (FFL-) FLOOR PLAN (2 UNITS)

DOOR WINDOW SCHEDULE - EWS					
TYPE	WIDTH	HEIGHT	ILL. LVL.	LINTEL LVL.	REMARKS
D1	1050	2275	# D0	2275	ROOM DOOR
D2	750	2100	# D0	2100	RATED DOOR
D3	1050	2175	# D0	2175	TOILET
D4	600	1925	1050	2275	2-HR FIRE DOOR
DW1	1250	2275	1050/0.0	2275	EXTERNAL DOOR
DW2	600	1375	600	2275	LOBBY
DW3	1250	1375	600	2275	LOBBY
DW4	1200	2175	100	2275	FHC

PLUMBING LEGEND		
1	1.1000 DIA. HOT PIPE	
2	1.1000 DIA. WASTE PIPE	
3	1.75 DIA. WASTE PIPE	
4	1.75 DIA. WASTE PIPE	
5	1.75 DIA. WASTE PIPE	
6	1.75 DIA. WASTE PIPE	
7	1.75 DIA. WASTE PIPE	
8	1.75 DIA. WASTE PIPE	
9	1.75 DIA. WASTE PIPE	
10	1.75 DIA. WASTE PIPE	
11	1.75 DIA. WASTE PIPE	
12	1.75 DIA. WASTE PIPE	
13	1.75 DIA. WASTE PIPE	
14	1.75 DIA. WASTE PIPE	
15	1.75 DIA. WASTE PIPE	
16	1.75 DIA. WASTE PIPE	
17	1.75 DIA. WASTE PIPE	
18	1.75 DIA. WASTE PIPE	
19	1.75 DIA. WASTE PIPE	
20	1.75 DIA. WASTE PIPE	
21	1.75 DIA. WASTE PIPE	
22	1.75 DIA. WASTE PIPE	
23	1.75 DIA. WASTE PIPE	
24	1.75 DIA. WASTE PIPE	
25	1.75 DIA. WASTE PIPE	
26	1.75 DIA. WASTE PIPE	
27	1.75 DIA. WASTE PIPE	
28	1.75 DIA. WASTE PIPE	
29	1.75 DIA. WASTE PIPE	
30	1.75 DIA. WASTE PIPE	
31	1.75 DIA. WASTE PIPE	
32	1.75 DIA. WASTE PIPE	
33	1.75 DIA. WASTE PIPE	
34	1.75 DIA. WASTE PIPE	
35	1.75 DIA. WASTE PIPE	
36	1.75 DIA. WASTE PIPE	
37	1.75 DIA. WASTE PIPE	
38	1.75 DIA. WASTE PIPE	
39	1.75 DIA. WASTE PIPE	
40	1.75 DIA. WASTE PIPE	
41	1.75 DIA. WASTE PIPE	
42	1.75 DIA. WASTE PIPE	
43	1.75 DIA. WASTE PIPE	
44	1.75 DIA. WASTE PIPE	
45	1.75 DIA. WASTE PIPE	
46	1.75 DIA. WASTE PIPE	
47	1.75 DIA. WASTE PIPE	
48	1.75 DIA. WASTE PIPE	
49	1.75 DIA. WASTE PIPE	
50	1.75 DIA. WASTE PIPE	
51	1.75 DIA. WASTE PIPE	
52	1.75 DIA. WASTE PIPE	
53	1.75 DIA. WASTE PIPE	
54	1.75 DIA. WASTE PIPE	
55	1.75 DIA. WASTE PIPE	
56	1.75 DIA. WASTE PIPE	
57	1.75 DIA. WASTE PIPE	
58	1.75 DIA. WASTE PIPE	
59	1.75 DIA. WASTE PIPE	
60	1.75 DIA. WASTE PIPE	
61	1.75 DIA. WASTE PIPE	
62	1.75 DIA. WASTE PIPE	
63	1.75 DIA. WASTE PIPE	
64	1.75 DIA. WASTE PIPE	
65	1.75 DIA. WASTE PIPE	
66	1.75 DIA. WASTE PIPE	
67	1.75 DIA. WASTE PIPE	
68	1.75 DIA. WASTE PIPE	
69	1.75 DIA. WASTE PIPE	
70	1.75 DIA. WASTE PIPE	
71	1.75 DIA. WASTE PIPE	
72	1.75 DIA. WASTE PIPE	
73	1.75 DIA. WASTE PIPE	
74	1.75 DIA. WASTE PIPE	
75	1.75 DIA. WASTE PIPE	
76	1.75 DIA. WASTE PIPE	
77	1.75 DIA. WASTE PIPE	
78	1.75 DIA. WASTE PIPE	
79	1.75 DIA. WASTE PIPE	
80	1.75 DIA. WASTE PIPE	
81	1.75 DIA. WASTE PIPE	
82	1.75 DIA. WASTE PIPE	
83	1.75 DIA. WASTE PIPE	
84	1.75 DIA. WASTE PIPE	
85	1.75 DIA. WASTE PIPE	
86	1.75 DIA. WASTE PIPE	
87	1.75 DIA. WASTE PIPE	
88	1.75 DIA. WASTE PIPE	
89	1.75 DIA. WASTE PIPE	
90	1.75 DIA. WASTE PIPE	
91	1.75 DIA. WASTE PIPE	
92	1.75 DIA. WASTE PIPE	
93	1.75 DIA. WASTE PIPE	
94	1.75 DIA. WASTE PIPE	
95	1.75 DIA. WASTE PIPE	
96	1.	