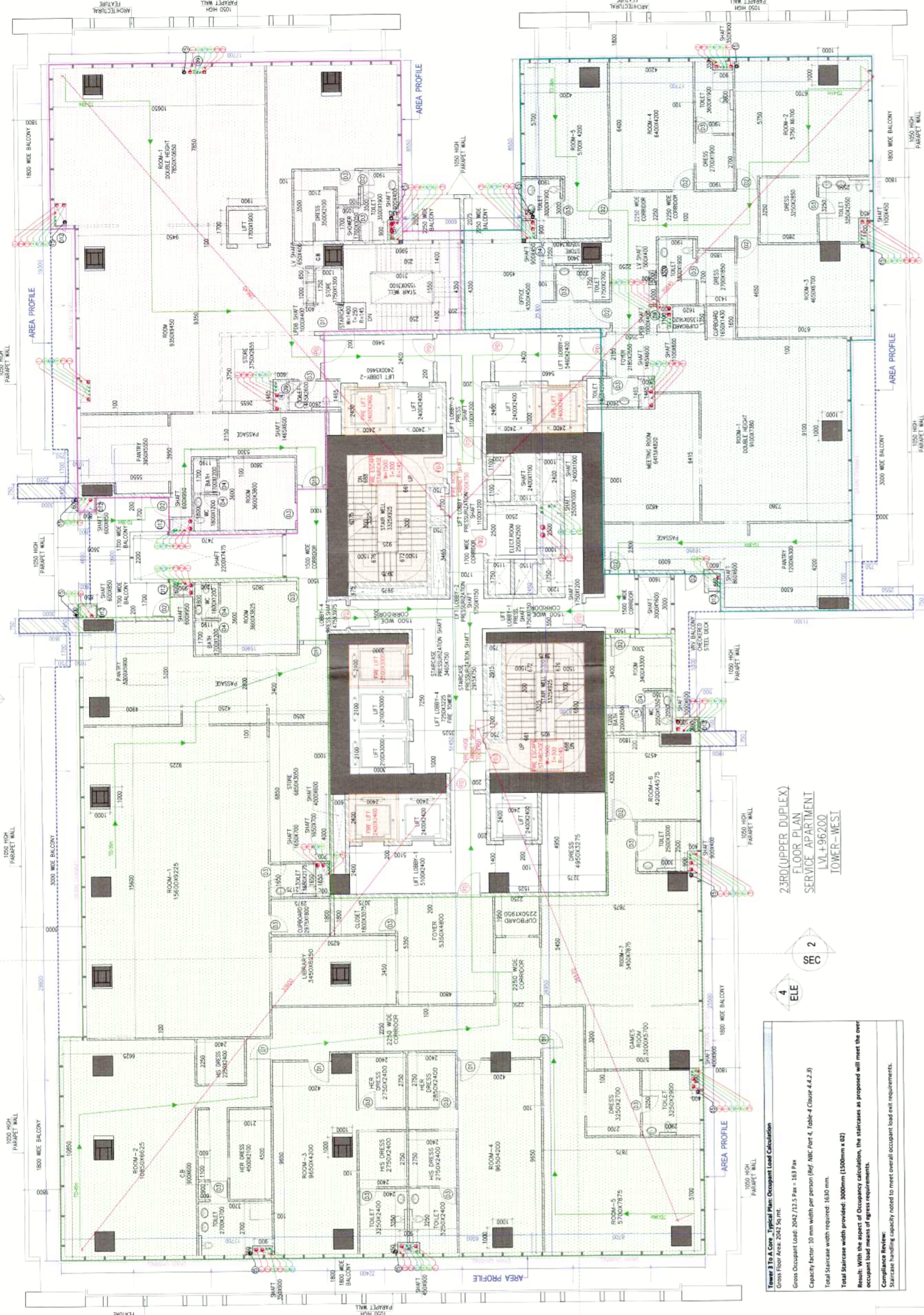


1. BUILDING WILL BE DESIGNED (STRUCTURES) AS PER RELEVANT IS CODES FOR EARTH QUAKE RESISTANCE.

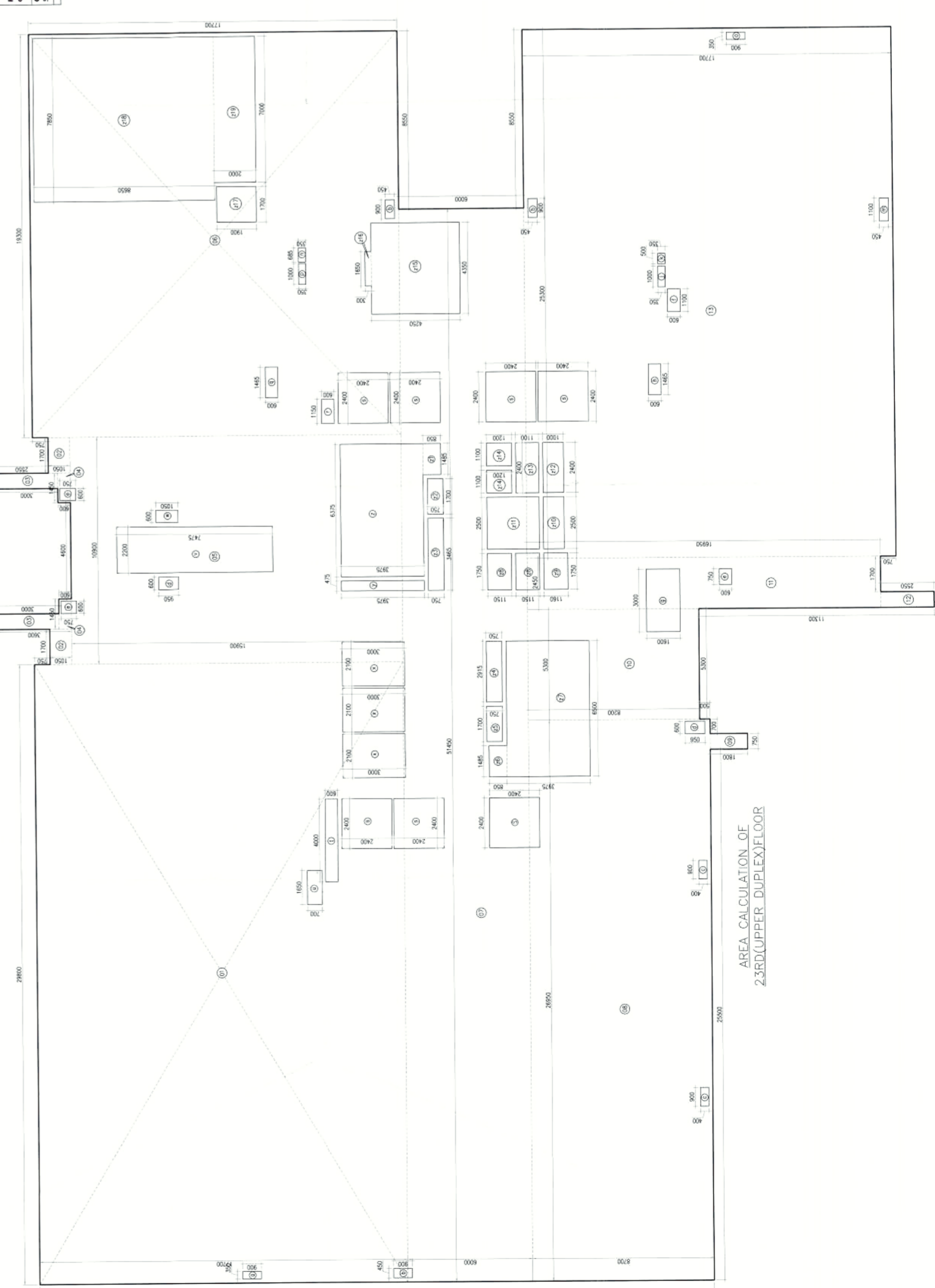
ITEM NO.	TAG	DETAILS	LOCATION
1	100	CONCRETE FLOOR FINISH	ENTRANCE
2	101	CONCRETE FLOOR FINISH	ENTRANCE
3	102	CONCRETE FLOOR FINISH	ENTRANCE
4	103	CONCRETE FLOOR FINISH	ENTRANCE
5	104	CONCRETE FLOOR FINISH	ENTRANCE
6	105	CONCRETE FLOOR FINISH	ENTRANCE
7	106	CONCRETE FLOOR FINISH	ENTRANCE
8	107	CONCRETE FLOOR FINISH	ENTRANCE
9	108	CONCRETE FLOOR FINISH	ENTRANCE
10	109	CONCRETE FLOOR FINISH	ENTRANCE
11	110	CONCRETE FLOOR FINISH	ENTRANCE
12	111	CONCRETE FLOOR FINISH	ENTRANCE
13	112	CONCRETE FLOOR FINISH	ENTRANCE
14	113	CONCRETE FLOOR FINISH	ENTRANCE
15	114	CONCRETE FLOOR FINISH	ENTRANCE
16	115	CONCRETE FLOOR FINISH	ENTRANCE
17	116	CONCRETE FLOOR FINISH	ENTRANCE
18	117	CONCRETE FLOOR FINISH	ENTRANCE
19	118	CONCRETE FLOOR FINISH	ENTRANCE
20	119	CONCRETE FLOOR FINISH	ENTRANCE
21	120	CONCRETE FLOOR FINISH	ENTRANCE
22	121	CONCRETE FLOOR FINISH	ENTRANCE
23	122	CONCRETE FLOOR FINISH	ENTRANCE
24	123	CONCRETE FLOOR FINISH	ENTRANCE
25	124	CONCRETE FLOOR FINISH	ENTRANCE
26	125	CONCRETE FLOOR FINISH	ENTRANCE
27	126	CONCRETE FLOOR FINISH	ENTRANCE
28	127	CONCRETE FLOOR FINISH	ENTRANCE
29	128	CONCRETE FLOOR FINISH	ENTRANCE
30	129	CONCRETE FLOOR FINISH	ENTRANCE
31	130	CONCRETE FLOOR FINISH	ENTRANCE
32	131	CONCRETE FLOOR FINISH	ENTRANCE
33	132	CONCRETE FLOOR FINISH	ENTRANCE
34	133	CONCRETE FLOOR FINISH	ENTRANCE
35	134	CONCRETE FLOOR FINISH	ENTRANCE
36	135	CONCRETE FLOOR FINISH	ENTRANCE
37	136	CONCRETE FLOOR FINISH	ENTRANCE
38	137	CONCRETE FLOOR FINISH	ENTRANCE
39	138	CONCRETE FLOOR FINISH	ENTRANCE
40	139	CONCRETE FLOOR FINISH	ENTRANCE
41	140	CONCRETE FLOOR FINISH	ENTRANCE
42	141	CONCRETE FLOOR FINISH	ENTRANCE
43	142	CONCRETE FLOOR FINISH	ENTRANCE
44	143	CONCRETE FLOOR FINISH	ENTRANCE
45	144	CONCRETE FLOOR FINISH	ENTRANCE
46	145	CONCRETE FLOOR FINISH	ENTRANCE
47	146	CONCRETE FLOOR FINISH	ENTRANCE
48	147	CONCRETE FLOOR FINISH	ENTRANCE
49	148	CONCRETE FLOOR FINISH	ENTRANCE
50	149	CONCRETE FLOOR FINISH	ENTRANCE
51	150	CONCRETE FLOOR FINISH	ENTRANCE
52	151	CONCRETE FLOOR FINISH	ENTRANCE
53	152	CONCRETE FLOOR FINISH	ENTRANCE
54	153	CONCRETE FLOOR FINISH	ENTRANCE
55	154	CONCRETE FLOOR FINISH	ENTRANCE
56	155	CONCRETE FLOOR FINISH	ENTRANCE
57	156	CONCRETE FLOOR FINISH	ENTRANCE
58	157	CONCRETE FLOOR FINISH	ENTRANCE
59	158	CONCRETE FLOOR FINISH	ENTRANCE
60	159	CONCRETE FLOOR FINISH	ENTRANCE
61	160	CONCRETE FLOOR FINISH	ENTRANCE
62	161	CONCRETE FLOOR FINISH	ENTRANCE
63	162	CONCRETE FLOOR FINISH	ENTRANCE
64	163	CONCRETE FLOOR FINISH	ENTRANCE
65	164	CONCRETE FLOOR FINISH	ENTRANCE
66	165	CONCRETE FLOOR FINISH	ENTRANCE
67	166	CONCRETE FLOOR FINISH	ENTRANCE
68	167	CONCRETE FLOOR FINISH	ENTRANCE
69	168	CONCRETE FLOOR FINISH	ENTRANCE
70	169	CONCRETE FLOOR FINISH	ENTRANCE
71	170	CONCRETE FLOOR FINISH	ENTRANCE
72	171	CONCRETE FLOOR FINISH	ENTRANCE
73	172	CONCRETE FLOOR FINISH	ENTRANCE
74	173	CONCRETE FLOOR FINISH	ENTRANCE
75	174	CONCRETE FLOOR FINISH	ENTRANCE
76	175	CONCRETE FLOOR FINISH	ENTRANCE
77	176	CONCRETE FLOOR FINISH	ENTRANCE
78	177	CONCRETE FLOOR FINISH	ENTRANCE
79	178	CONCRETE FLOOR FINISH	ENTRANCE
80	179	CONCRETE FLOOR FINISH	ENTRANCE
81	180	CONCRETE FLOOR FINISH	ENTRANCE
82	181	CONCRETE FLOOR FINISH	ENTRANCE
83	182	CONCRETE FLOOR FINISH	ENTRANCE
84	183	CONCRETE FLOOR FINISH	ENTRANCE
85	184	CONCRETE FLOOR FINISH	ENTRANCE
86	185	CONCRETE FLOOR FINISH	ENTRANCE
87	186	CONCRETE FLOOR FINISH	ENTRANCE
88	187	CONCRETE FLOOR FINISH	ENTRANCE
89	188	CONCRETE FLOOR FINISH	ENTRANCE
90	189	CONCRETE FLOOR FINISH	ENTRANCE
91	190	CONCRETE FLOOR FINISH	ENTRANCE
92	191	CONCRETE FLOOR FINISH	ENTRANCE
93	192	CONCRETE FLOOR FINISH	ENTRANCE
94	193	CONCRETE FLOOR FINISH	ENTRANCE
95	194	CONCRETE FLOOR FINISH	ENTRANCE
96	195	CONCRETE FLOOR FINISH	ENTRANCE
97	196	CONCRETE FLOOR FINISH	ENTRANCE
98	197	CONCRETE FLOOR FINISH	ENTRANCE
99	198	CONCRETE FLOOR FINISH	ENTRANCE
100	199	CONCRETE FLOOR FINISH	ENTRANCE

- LEGEND
- 1. 100mm CONCRETE
  - 2. 150mm CONCRETE
  - 3. 200mm CONCRETE
  - 4. 250mm CONCRETE
  - 5. 300mm CONCRETE
  - 6. 350mm CONCRETE
  - 7. 400mm CONCRETE
  - 8. 450mm CONCRETE
  - 9. 500mm CONCRETE
  - 10. 550mm CONCRETE
  - 11. 600mm CONCRETE
  - 12. 650mm CONCRETE
  - 13. 700mm CONCRETE
  - 14. 750mm CONCRETE
  - 15. 800mm CONCRETE
  - 16. 850mm CONCRETE
  - 17. 900mm CONCRETE
  - 18. 950mm CONCRETE
  - 19. 1000mm CONCRETE
  - 20. 1050mm CONCRETE
  - 21. 1100mm CONCRETE
  - 22. 1150mm CONCRETE
  - 23. 1200mm CONCRETE
  - 24. 1250mm CONCRETE
  - 25. 1300mm CONCRETE
  - 26. 1350mm CONCRETE
  - 27. 1400mm CONCRETE
  - 28. 1450mm CONCRETE
  - 29. 1500mm CONCRETE
  - 30. 1550mm CONCRETE
  - 31. 1600mm CONCRETE
  - 32. 1650mm CONCRETE
  - 33. 1700mm CONCRETE
  - 34. 1750mm CONCRETE
  - 35. 1800mm CONCRETE
  - 36. 1850mm CONCRETE
  - 37. 1900mm CONCRETE
  - 38. 1950mm CONCRETE
  - 39. 2000mm CONCRETE
  - 40. 2050mm CONCRETE
  - 41. 2100mm CONCRETE
  - 42. 2150mm CONCRETE
  - 43. 2200mm CONCRETE
  - 44. 2250mm CONCRETE
  - 45. 2300mm CONCRETE
  - 46. 2350mm CONCRETE
  - 47. 2400mm CONCRETE
  - 48. 2450mm CONCRETE
  - 49. 2500mm CONCRETE
  - 50. 2550mm CONCRETE
  - 51. 2600mm CONCRETE
  - 52. 2650mm CONCRETE
  - 53. 2700mm CONCRETE
  - 54. 2750mm CONCRETE
  - 55. 2800mm CONCRETE
  - 56. 2850mm CONCRETE
  - 57. 2900mm CONCRETE
  - 58. 2950mm CONCRETE
  - 59. 3000mm CONCRETE
  - 60. 3050mm CONCRETE
  - 61. 3100mm CONCRETE
  - 62. 3150mm CONCRETE
  - 63. 3200mm CONCRETE
  - 64. 3250mm CONCRETE
  - 65. 3300mm CONCRETE
  - 66. 3350mm CONCRETE
  - 67. 3400mm CONCRETE
  - 68. 3450mm CONCRETE
  - 69. 3500mm CONCRETE
  - 70. 3550mm CONCRETE
  - 71. 3600mm CONCRETE
  - 72. 3650mm CONCRETE
  - 73. 3700mm CONCRETE
  - 74. 3750mm CONCRETE
  - 75. 3800mm CONCRETE
  - 76. 3850mm CONCRETE
  - 77. 3900mm CONCRETE
  - 78. 3950mm CONCRETE
  - 79. 4000mm CONCRETE
  - 80. 4050mm CONCRETE
  - 81. 4100mm CONCRETE
  - 82. 4150mm CONCRETE
  - 83. 4200mm CONCRETE
  - 84. 4250mm CONCRETE
  - 85. 4300mm CONCRETE
  - 86. 4350mm CONCRETE
  - 87. 4400mm CONCRETE
  - 88. 4450mm CONCRETE
  - 89. 4500mm CONCRETE
  - 90. 4550mm CONCRETE
  - 91. 4600mm CONCRETE
  - 92. 4650mm CONCRETE
  - 93. 4700mm CONCRETE
  - 94. 4750mm CONCRETE
  - 95. 4800mm CONCRETE
  - 96. 4850mm CONCRETE
  - 97. 4900mm CONCRETE
  - 98. 4950mm CONCRETE
  - 99. 5000mm CONCRETE
  - 100. 5050mm CONCRETE
  - 101. 5100mm CONCRETE
  - 102. 5150mm CONCRETE
  - 103. 5200mm CONCRETE
  - 104. 5250mm CONCRETE
  - 105. 5300mm CONCRETE
  - 106. 5350mm CONCRETE
  - 107. 5400mm CONCRETE
  - 108. 5450mm CONCRETE
  - 109. 5500mm CONCRETE
  - 110. 5550mm CONCRETE
  - 111. 5600mm CONCRETE
  - 112. 5650mm CONCRETE
  - 113. 5700mm CONCRETE
  - 114. 5750mm CONCRETE
  - 115. 5800mm CONCRETE
  - 116. 5850mm CONCRETE
  - 117. 5900mm CONCRETE
  - 118. 5950mm CONCRETE
  - 119. 6000mm CONCRETE
  - 120. 6050mm CONCRETE
  - 121. 6100mm CONCRETE
  - 122. 6150mm CONCRETE
  - 123. 6200mm CONCRETE
  - 124. 6250mm CONCRETE
  - 125. 6300mm CONCRETE
  - 126. 6350mm CONCRETE
  - 127. 6400mm CONCRETE
  - 128. 6450mm CONCRETE
  - 129. 6500mm CONCRETE
  - 130. 6550mm CONCRETE
  - 131. 6600mm CONCRETE
  - 132. 6650mm CONCRETE
  - 133. 6700mm CONCRETE
  - 134. 6750mm CONCRETE
  - 135. 6800mm CONCRETE
  - 136. 6850mm CONCRETE
  - 137. 6900mm CONCRETE
  - 138. 6950mm CONCRETE
  - 139. 7000mm CONCRETE
  - 140. 7050mm CONCRETE
  - 141. 7100mm CONCRETE
  - 142. 7150mm CONCRETE
  - 143. 7200mm CONCRETE
  - 144. 7250mm CONCRETE
  - 145. 7300mm CONCRETE
  - 146. 7350mm CONCRETE
  - 147. 7400mm CONCRETE
  - 148. 7450mm CONCRETE
  - 149. 7500mm CONCRETE
  - 150. 7550mm CONCRETE
  - 151. 7600mm CONCRETE
  - 152. 7650mm CONCRETE
  - 153. 7700mm CONCRETE
  - 154. 7750mm CONCRETE
  - 155. 7800mm CONCRETE
  - 156. 7850mm CONCRETE
  - 157. 7900mm CONCRETE
  - 158. 7950mm CONCRETE
  - 159. 8000mm CONCRETE
  - 160. 8050mm CONCRETE
  - 161. 8100mm CONCRETE
  - 162. 8150mm CONCRETE
  - 163. 8200mm CONCRETE
  - 164. 8250mm CONCRETE
  - 165. 8300mm CONCRETE
  - 166. 8350mm CONCRETE
  - 167. 8400mm CONCRETE
  - 168. 8450mm CONCRETE
  - 169. 8500mm CONCRETE
  - 170. 8550mm CONCRETE
  - 171. 8600mm CONCRETE
  - 172. 8650mm CONCRETE
  - 173. 8700mm CONCRETE
  - 174. 8750mm CONCRETE
  - 175. 8800mm CONCRETE
  - 176. 8850mm CONCRETE
  - 177. 8900mm CONCRETE
  - 178. 8950mm CONCRETE
  - 179. 9000mm CONCRETE
  - 180. 9050mm CONCRETE
  - 181. 9100mm CONCRETE
  - 182. 9150mm CONCRETE
  - 183. 9200mm CONCRETE
  - 184. 9250mm CONCRETE
  - 185. 9300mm CONCRETE
  - 186. 9350mm CONCRETE
  - 187. 9400mm CONCRETE
  - 188. 9450mm CONCRETE
  - 189. 9500mm CONCRETE
  - 190. 9550mm CONCRETE
  - 191. 9600mm CONCRETE
  - 192. 9650mm CONCRETE
  - 193. 9700mm CONCRETE
  - 194. 9750mm CONCRETE
  - 195. 9800mm CONCRETE
  - 196. 9850mm CONCRETE
  - 197. 9900mm CONCRETE
  - 198. 9950mm CONCRETE
  - 199. 10000mm CONCRETE



2ND FLOOR DUPLEX FLOOR PLAN SERVICE APARTMENT LOWER WEST

GROUP	ITEM	DESCRIPTION	AREA (SQ. M)	UNIT	QTY	TOTAL AREA (SQ. M)
GROUP - 1	1	2ND FLOOR DUPLEX FLOOR AREA	17.00	SQ. M	1	17.00
	2	2ND FLOOR DUPLEX BALCONY AREA	1.00	SQ. M	1	1.00
	3	2ND FLOOR DUPLEX STAIR AREA	1.00	SQ. M	1	1.00
	4	2ND FLOOR DUPLEX TOILET AREA	1.00	SQ. M	1	1.00
	5	2ND FLOOR DUPLEX BATH AREA	1.00	SQ. M	1	1.00
	6	2ND FLOOR DUPLEX KITCHEN AREA	1.00	SQ. M	1	1.00
	7	2ND FLOOR DUPLEX LIVING AREA	1.00	SQ. M	1	1.00
	8	2ND FLOOR DUPLEX BED ROOM AREA	1.00	SQ. M	1	1.00
	9	2ND FLOOR DUPLEX CLOSET AREA	1.00	SQ. M	1	1.00
	10	2ND FLOOR DUPLEX CORRIDOR AREA	1.00	SQ. M	1	1.00
GROUP - 2	1	2ND FLOOR DUPLEX BALCONY AREA	1.00	SQ. M	1	1.00
	2	2ND FLOOR DUPLEX STAIR AREA	1.00	SQ. M	1	1.00
	3	2ND FLOOR DUPLEX TOILET AREA	1.00	SQ. M	1	1.00
	4	2ND FLOOR DUPLEX BATH AREA	1.00	SQ. M	1	1.00
	5	2ND FLOOR DUPLEX KITCHEN AREA	1.00	SQ. M	1	1.00
	6	2ND FLOOR DUPLEX LIVING AREA	1.00	SQ. M	1	1.00
	7	2ND FLOOR DUPLEX BED ROOM AREA	1.00	SQ. M	1	1.00
	8	2ND FLOOR DUPLEX CLOSET AREA	1.00	SQ. M	1	1.00
	9	2ND FLOOR DUPLEX CORRIDOR AREA	1.00	SQ. M	1	1.00
	10	2ND FLOOR DUPLEX TOTAL AREA	10.00	SQ. M	1	10.00
TOTAL						27.00



1. BUILDING WILL BE DESIGNED (STRUCTURES) AS PER RELEVANT IS CODES FOR EARTH QUAKE RESISTANCE.

**PROJECT**  
 PIONEER PLANS OF COMMERCIAL DEVELOPMENT MEASURING 1.4875 ACRES LICENCE NO. 240 OF 2007 DATED 24.10.2007 AND 8.99025 ACRES LICENCE NO. 240 OF 2007 DATED 24.10.2007 AND 8.99025 ACRES LICENCE NO. 199 OF 2008 DATED 12.2008 TOTALING 24.4775 ACRES IN SECTOR-62 COURSE EXTENSION ROAD, BANGALORE INFRASTRUCTURE LTD.

**CLIENT**  
 PIONEER URBAN LAND & INFRASTRUCTURE LTD.  
 Pioneer Urban  
 Near GOLF Course Extension Road,  
 Sector-62,  
 Gurgaon - 122001 Haryana

**DESIGN ARCHITECT**  
**RSP**  
 RSP Design consultants  
 (India) Pvt. Ltd.  
 101, 1st Floor, Birla Industrial Tower, Sector 48, Solih Road  
 New Delhi - 110028, India. TEL: 4768888 FAX: 4768818  
 HEAD OFFICE: 30, MUSTUN ROAD, BANGALORE-560 007  
 TEL: 2596888 FAX: 2596888  
 EMAIL: rspdesign@rediffmail.com www.rspdesign.com

**ASSOCIATE ARCHITECT**  
**RISMS ARCHITECTS**  
 RISMS ARCHITECTS PVT. LTD.  
 69, Nara Nivas, Bhowani Kunj  
 (Behind D2), Vasant Kunj,  
 New Delhi - 110070  
 Tel: 011-2689866, 26898617  
 WWW.RISMS-ARCH.COM

ARCHITECT'S SEAL & SIGNATURE  
 ARCHITECT'S SEAL & SIGNATURE  
 OWNER'S SEAL & SIGNATURE

JUNE - 2024 Scale: 1:100  
 Drawing No.: 2689861-1  
 2ND UPPER DUPLEX FLOOR PLAN & AREA CALCULATION (LOWER WEST)