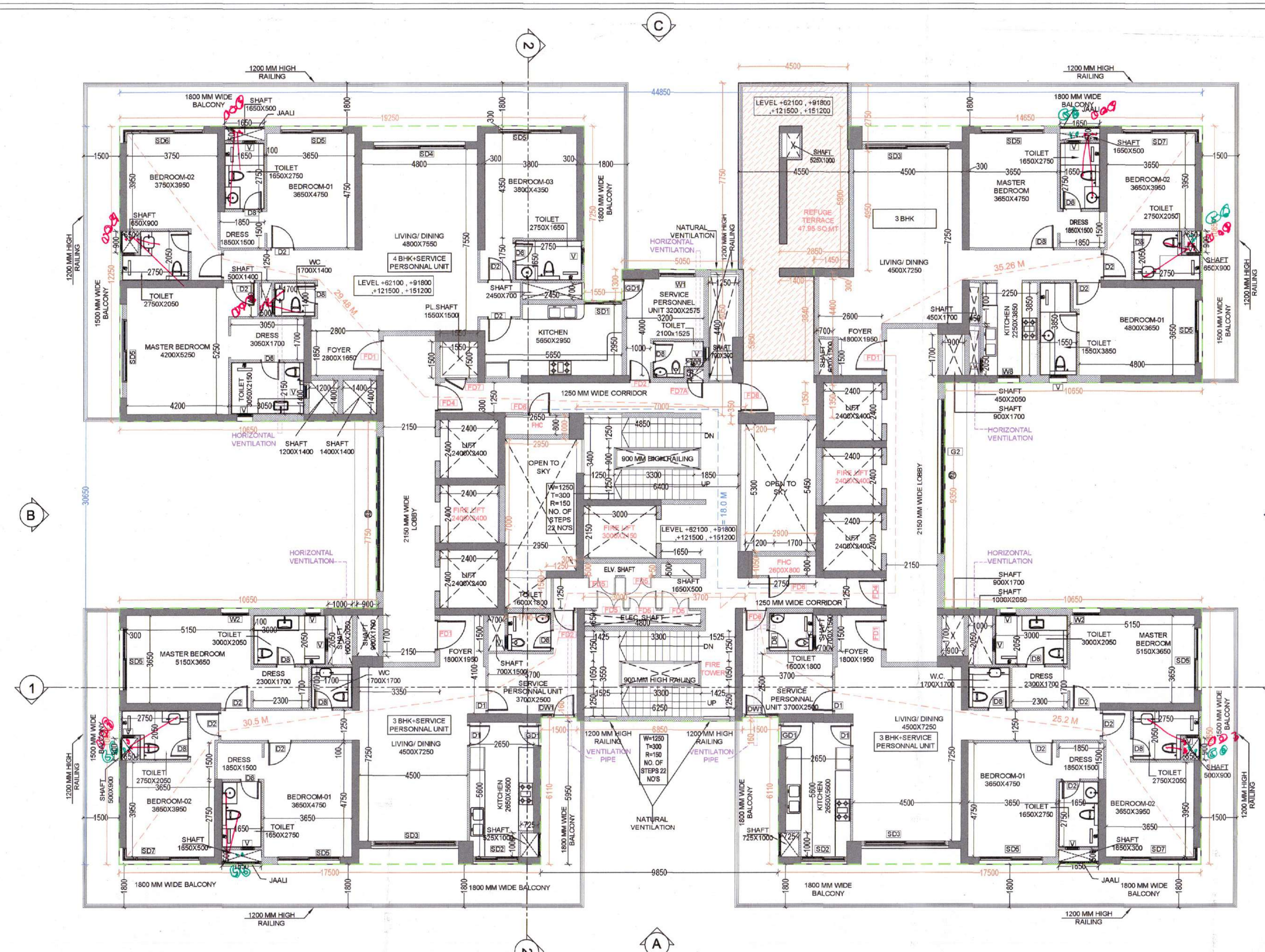


TYPICAL FLOOR PLAN (2ND - 17TH / 19TH - 26TH / 28TH - 35TH / 37TH - 44TH) SCALE - 1:125

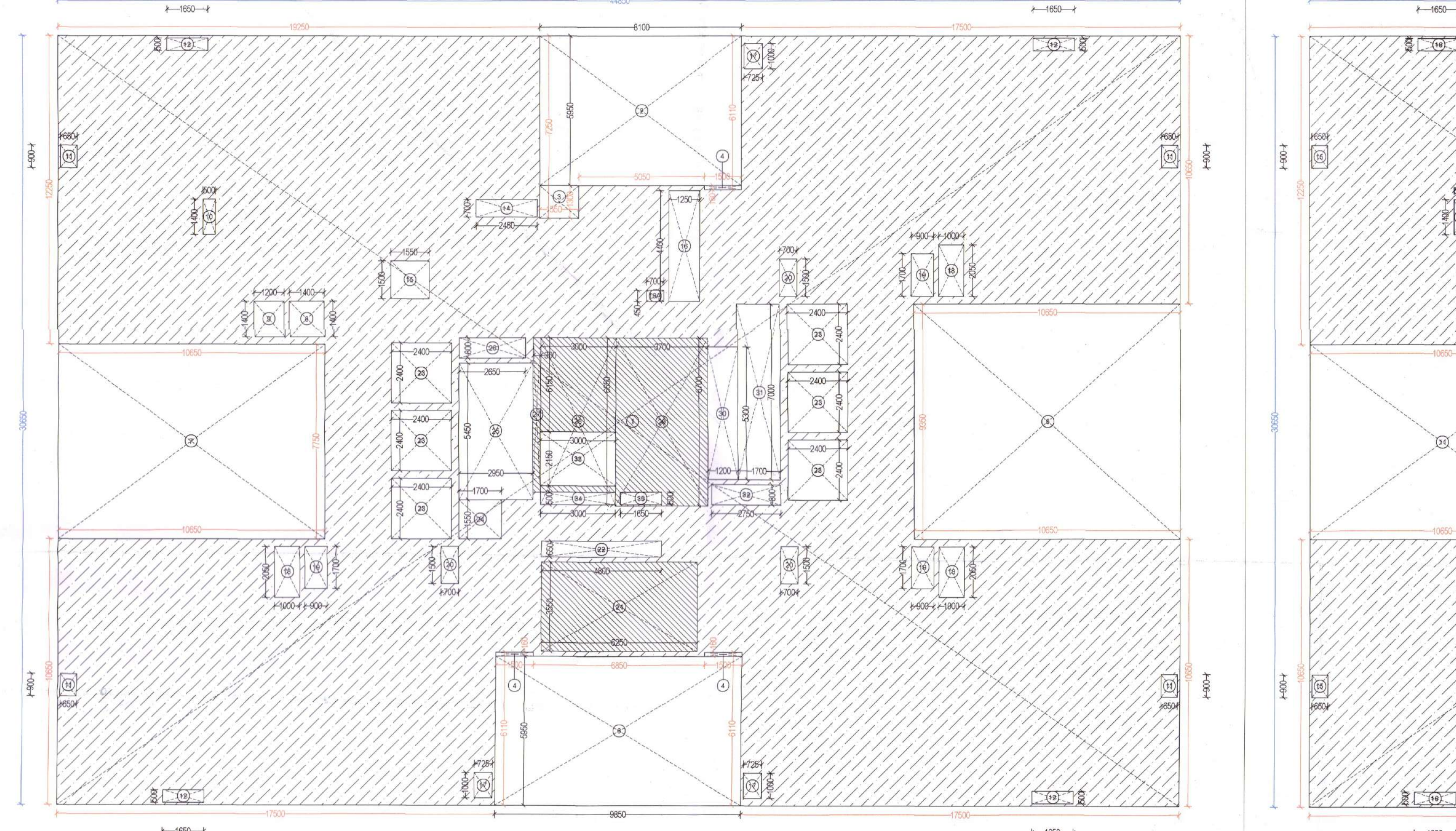
TYPICAL FLOOR PLAN (18TH / 27TH / 36TH / 45TH) (REFUGE) (LEVEL +62100 / +91800 / +121500 / +151200) SCALE - 1:125



TYPICAL FLOOR PLAN (18TH / 27TH / 36TH / 45TH) (REFUGE) (LEVEL +62100 / +91800 / +121500 / +151200) SCALE - 1:125

### REFUGE AREA CALCULATION

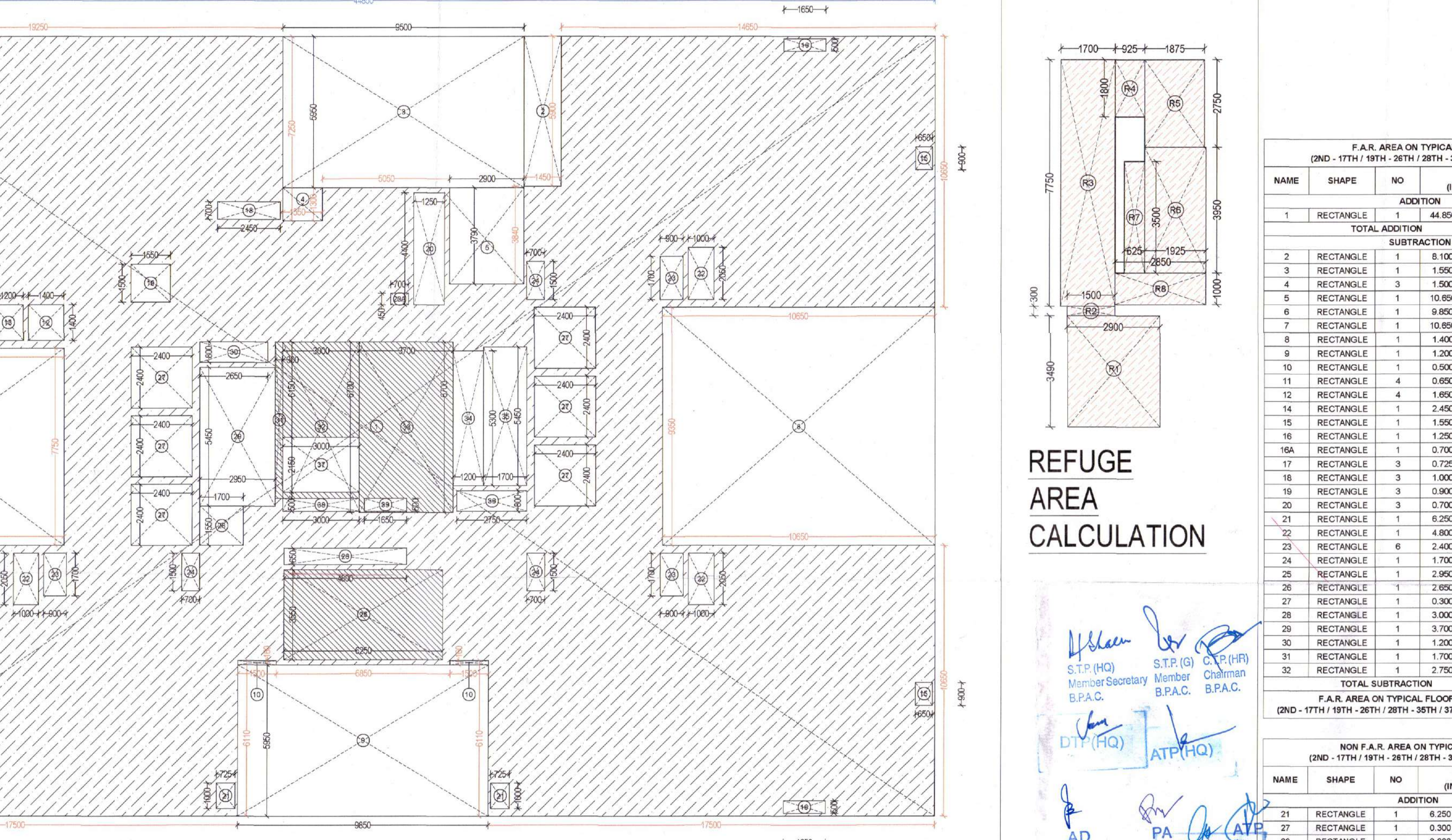
SR. NO.	SHAPE	SIZE (IN MTS.)	AREA (IN SQ.MT.)
A	COVERED AREA OF 18TH / 27TH / 36TH / 45TH FLOOR		883.78
B	COVERED AREA OF 17TH / 26TH / 35TH / 44TH FLOOR		899.36
C	COVERED AREA OF BOTH FLOORS (A + B)		1783.13
D	OCCUPANT LOAD @ 12.5 SQ.MT. PER PERSON (C / 12.5)		142.65
E	AREA REQUIRED @ 0.3 SQ.MT. PER PERSON (D x 0.3)		42.80
F	ADDITIONAL AREA REQUIRED FOR DISABLED @ 0.9 SQ.MT.		0.90
G	TOTAL AREA REQUIRED (E + F)		43.70



### SERVICE PERSONNEL UNIT CAPRET AREA CALCULATION (4BHK + SPU)

NAME	SHAPE	NO	SIZE (IN MTS.)	TOTAL (IN SQ.MT.)
ADDITION				
A	RECTANGLE	1	1.850 x 0.100	0.19
B	RECTANGLE	1	0.200 x 0.900	0.18
C	RECTANGLE	1	3.200 x 3.650	11.68
D	RECTANGLE	1	1.000 x 0.350	0.35
E	RECTANGLE	1	1.400 x 1.550	1.47
F	RECTANGLE	1	0.900 x 0.300	0.27
TOTAL ADDITION				
14.14				
CARPET AREA (SERVICE PERSONNEL UNIT)				
14.14				

SERVICE PERSONNEL UNIT CAPRET AREA CALCULATION (4BHK + SPU)



### SERVICE PERSONNEL UNIT CAPRET AREA CALCULATION (3BHK + SPU)

NAME	SHAPE	NO	SIZE (IN MTS.)	TOTAL (IN SQ.MT.)
ADDITION				
G	RECTANGLE	1	0.900 x 0.140	0.13
H	RECTANGLE	1	0.100 x 0.900	0.09
J	RECTANGLE	1	3.700 x 2.500	9.25
K	RECTANGLE	1	2.900 x 1.700	4.93
L	RECTANGLE	1	0.900 x 0.200	0.18
TOTAL ADDITION				
14.58				
CARPET AREA (SERVICE PERSONNEL UNIT)				
14.58				

SERVICE PERSONNEL UNIT CAPRET AREA CALCULATION (3BHK + SPU)

### TYPICAL MECHANICAL CALCULATION FOR W.C.

S.No.	Location	Area (Sq. Ft.)	Volume (Cu. Ft.)	Disp. on CFM	SELECTION	EXHAUST
1.1	W.C.	37	10.2	378	75	1# 100 cfm cassette inline fan 270x270x171 110(CO)
1.2	TOILET	51	10.2	315	63	1# 100 cfm cassette inline fan 270x270x171 110(CO)
1.4	TOILET	32	10.2	329	106	1# 100 cfm cassette inline fan 270x270x171 110(CO)

### REFUGE AREA CALCULATION

S.No.	NAME	WIDTH	CALL LVL	LEVEL LVL
1	D1	900	±0	+250
2	D2	1000	±0	+250
3	D3	3400	±0	+250
4	D4	1100	±0	+250
5	D5	1050	±0	+250
6	D6	900	±0	+250
7	D7	1200	±0	+250
8	D8	800	±0	+250
9	D9	1900	±0	+250
SLIDING DOOR				
10	SD1	1550	±0	+250
11	SD2	1800	±0	+250
12	SD3	3400	±0	+250
13	SD4	3800	±0	+250
14	SD5	2600	±0	+250
15	SD6	3315x540	±0	+250
16	SD7	3150x540	±0	+250
17	SD8	2400x540	±0	+250
18	SD9	2700	±0	+250
19	SD10	2400	±0	+250
20	SD11	3240x540	±0	+250
21	SD12	4800	±0	+250
22	SD13	3000	±0	+250
23	SD14	1590x1340	±0	+250
SLIDING FOLDING DOOR				
24	SF1	3000	±0	+2400
FIRE DOOR				
25	FD1	1250	±0	+2400
26	FD2	900	±0	+2400
27	FD3	1000	±0	+2400
28	FD4	1100	±0	+2400
29	FD5	1100	±0	+2400
30	FD6	900	±0	+2400
31	FD7	900	±0	+2400
32	FD8	1300	±0	+2400
33	FD9	1100	±0	+2400
34	FD10	1800	±0	+2400
35	FD11	1500	±0	+2400
DOOR WINDOW				
36	DW1	1050x400	±0	+2500
37	DW2	1050x400	±0	+2500
38	DW3	1250x250	±0	+2500
39	DW4	1075x1000x1075	±0	+2500
40	DW5	2700x1000x2700	±0	+2500
41	DW6	600x1500x600	±0	+2500
GLASS DOOR				
42	GD1	1500	±0	+2600
43	GD2	1500	±0	+2600
44	GD3	1200	±0	+2600
VENTILATOR & SHIRT ACCESS DOOR				
45	V	600	±0	+2000
WINDOW				
46	W1	1500	±0	+2500
47	W2	1150	±0	+2500
48	W3	550	±0	+2500
49	W4	1900	±0	+2500
50	W5	1300	±0	+2500
51	W6	2150	±0	+2500
52	W7	1250	±0	+2500
53	W8	1875	±0	+2500
54	W9	1900	±0	+2500
55	W10	900	±0	+2500
56	W11	1600	±0	+2500
57	W12	1000	±0	+2500
58	W13	1725	±0	+2500
59	W14	1875	±0	+2500
STRUCTURAL GLAZING				
60	G1	3000	±0	+2500
61	G11	6400	±0	+2500
62	G12	1875	±0	+2500
63	G3	3650	±0	+2500
64	G4	2700	±0	+2500
65	G5	3600	±0	+2500
66	G6	2600	±0	+2500
67	G7	1050	±0	+2500
68	G8	3315x540	±0	+2500
69	G9	600	±0	+2500
70	G10	6200	±0	+2500
71	G11	1900	±0	+2500
72	G12	2400	±0	+2500
73	G13	1750	±0	+2500
74	G14	2400x540	±0	+2500
75	G15	1800	±0	+2500
76	G16	3150x540	±0	+2500
77	G17	3150	±0	+2500
78	G18	4000	±0	+2500