

To,  
**Haryana Real Estate Regulatory Authority**  
 PWD Guest House, Old Railway Rd,  
 Civil Lines,  
 Gurugram, Haryana 122001

Date 09.09.2025

Dear Sir,

We, Ashiana Housing Limited, state the following timelines for Ashiana Aaroham Ph I

Sr. No.	Description	Start Date	Duration	Finish Date
01	Internal Roads and Pavements	21-Mar-27	220	27-Oct-27
02	Water Supply system	19-Jan-27	80	09-Apr-27
03	Storm Water drainage	30-Oct-26	80	18-Jan-27
04	Sewerage system	01-Jun-26	150	29-Oct-26
05	Street Lighting	28-Oct-27	90	26-Jan-28
06	Playgrounds and Parks	19-May-27	270	13-Feb-28
07	Electricity supply system	28-Nov-27	180	26-May-28
08	Security and fire- fighting	30-Oct-26	211	29-May-27
09	Renewable energy system	27-Jan-28	122	28-May-28
10	Parking	19-Jan-27	60	20-Mar-27
11	STP	30-Oct-26	250	07-Jul-27
12	Underground water tank	01-Jun-26	250	06-Feb-27
13	Rainwater harvesting	30-Oct-26	60	29-Dec-26
14	Electrical sub station	02-Oct-26	272	01-Jul-27
15	Club House (Community Block)	15-Sep-25	1291	29-Mar-29
16	Commercial block	30-Oct-26	916	03-May-29
17	Others	01-Mar-26	1400	30-Dec-29



**Ashiana Housing Limited**

Branch Office : Ashiana Amarah, Sector- 93,  
 Gurgaon, Haryana- 122505

T: 9205946999; W: ashianahousing.com

Regd. Office : 5F Everest.46/C Chowringhee Road, Kolkata 700071

CIN: L70109WB1986PLC040864; Fax: 011 4265 4200

To,  
**Haryana Real Estate Regulatory Authority**  
 PWD Guest House, Old Railway Rd,  
 Civil Lines,  
 Gurugram, Haryana 122001

Date 09.09.2025

Dear Sir,

We, Ashiana Housing Limited, state the following timelines for Ashiana Aaroham Phase I.

<b>Tower 3 (B'C)</b>	<b>Sub structure (Normally 10%- 15%)</b>	<b>Super structure (Normally 35% - 45%)</b>	<b>MEP (Normally 20% - 25%)</b>	<b>Finishing (Normally 20% - 25%)</b>
Jan-Mar 25	0%	0%	0%	0%
Apr-Jun 25	0%	0%	0%	0%
Jul-Sep 25	0%	0%	0%	0%
Oct-Dec 25	0%	0%	0%	0%
Jan-Mar 26	0%	20%	0%	0%
Apr-Jun 26	0%	20%	0%	0%
Jul-Sep 26	29%	20%	0%	0%
Oct-Dec 26	42%	20%	11%	4%
Jan-Mar 27	29%	20%	17%	4%
Apr-Jun 27	0%	0%	17%	8%
Jul-Sep 27	0%	0%	17%	10%
Oct-Dec 27	0%	0%	17%	12%
Jan-Mar-28	0%	0%	15%	12%
Apr-Jun 28	0%	0%	6%	12%
Jul-Sep 28	0%	0%	0%	12%
Oct-Dec 28	0%	0%	0%	12%

**Ashiana Housing Limited**

**Branch Office :** Ashiana Amarah, Sector- 93,  
 Gurgaon, Haryana- 122505  
 T: 9205946999; W: ashianahousing.com

**Regd. Office :** 5F Everest.46/C Chowringhee Road, Kolkata 700071  
 CIN: L70109WB1986PLC040864; Fax: 011 4265 4200



Jan-Mar 29	0%	0%	0%	4%
Apr-Jun 29	0%	0%	0%	4%
Jul-Sep 29	0%	0%	0%	4%
Oct-Dec 29	0%	0%	0%	5%
<b>Total</b>	<b>100%</b>	<b>100%</b>	<b>100%</b>	<b>100%</b>



**Ashiana Housing Limited**

**Branch Office :** Ashiana Amarah, Sector- 93,  
Gurgaon, Haryana- 122505  
T: 9205946999; W: [ashianahousing.com](http://ashianahousing.com)

**Regd. Office :** 5F Everest.46/C Chowringhee Road, Kolkata 700071  
CIN: L70109WB1986PLC040864; Fax: 011 4265 4200

To,  
**Haryana Real Estate Regulatory Authority**  
 PWD Guest House, Old Railway Rd,  
 Civil Lines,  
 Gurugram, Haryana 122001

Date 09.09.2025

Dear Sir,

We, Ashiana Housing Limited, state the following timelines for Ashiana Aaroham Phase I.

<b>Tower 4 (AB)</b>	<b>Sub structure (Normally 10%- 15%)</b>	<b>Super structure (Normally 35% - 45%)</b>	<b>MEP (Normally 20% - 25%)</b>	<b>Finishing (Normally 20% - 25%)</b>
Jan-Mar 25	0%	0%	0%	0%
Apr-Jun 25	0%	0%	0%	0%
Jul-Sep 25	29%	0%	0%	0%
Oct-Dec 25	43%	0%	0%	0%
Jan-Mar 26	29%	20%	0%	0%
Apr-Jun 26	0%	20%	0%	0%
Jul-Sep 26	0%	20%	0%	0%
Oct-Dec 26	0%	20%	11%	4%
Jan-Mar 27	0%	20%	17%	4%
Apr-Jun 27	0%	0%	17%	8%
Jul-Sep 27	0%	0%	17%	10%
Oct-Dec 27	0%	0%	17%	12%
Jan-Mar-28	0%	0%	15%	12%
Apr-Jun 28	0%	0%	6%	12%
Jul-Sep 28	0%	0%	0%	12%

**Ashiana Housing Limited**

**Branch Office :** Ashiana Amarah, Sector- 93,  
 Gurgaon, Haryana- 122505  
 T: 9205946999; W: ashianahousing.com

**Regd. Office :** 5F Everest.46/C Chowringhee Road, Kolkata 700071  
 CIN: L70109WB1986PLC040864; Fax: 011 4265 4200



Oct-Dec 28	0%	0%	0%	12%
Jan-Mar 29	0%	0%	0%	4%
Apr-Jun 29	0%	0%	0%	4%
Jul-Sep 29	0%	0%	0%	4%
Oct-Dec 29	0%	0%	0%	5%
<b>Total</b>	<b>100%</b>	<b>100%</b>	<b>100%</b>	<b>100%</b>



**Ashiana Housing Limited**

**Branch Office :** Ashiana Amarah, Sector- 93,  
Gurgaon, Haryana- 122505  
T: 9205946999; W: ashianahousing.com

**Regd. Office :** 5F Everest.46/C Chowringhee Road, Kolkata 700071  
CIN: L70109WB1986PLC040864; Fax: 011 4265 4200

To,  
**Haryana Real Estate Regulatory Authority**  
 PWD Guest House, Old Railway Rd,  
 Civil Lines,  
 Gurugram, Haryana 122001

Date 09.09.2025

Dear Sir,  
 We, Ashiana Housing Limited, state the following timelines for Ashiana Aaroham Phase I.

Community Building(Club house)	Sub structure (Normally 10%-15%)	Super structure (Normally 35% - 45%)	MEP (Normally 20% - 25%)	Finishing (Normally 20% - 25%)
Jan-Mar 25	0%	0%	0%	0%
Apr-Jun 25	0%	0%	0%	0%
Jul-Sep 25	9%	0%	0%	0%
Oct-Dec 25	20%	0%	0%	0%
Jan-Mar 26	43%	0%	0%	0%
Apr-Jun 26	28%	20%	0%	0%
Jul-Sep 26	0%	20%	0%	0%
Oct-Dec 26	0%	20%		0%
Jan-Mar 27	0%	20%	11%	8%
Apr-Jun 27	0%	20%	17%	8%
Jul-Sep 27	0%	0%	17%	10%
Oct-Dec 27	0%	0%	17%	11%
Jan-Mar-28	0%	0%	17%	12%
Apr-Jun 28	0%	0%	15%	12%
Jul-Sep 28	0%	0%	6%	12%
Oct-Dec 28	0%	0%	0%	12%
Jan-Mar 29	0%	0%	0%	15%
Apr-Jun 29	0%	0%	0%	0%
<b>Total</b>	<b>100%</b>	<b>100%</b>	<b>100%</b>	<b>100%</b>

**Ashiana Housing Limited**

Branch Office : Ashiana Amarah, Sector- 93,  
 Gurgaon, Haryana- 122505  
 T: 9205946999; W: ashianahousing.com

Regd. Office : 5F Everest.46/C Chowringhee Road, Kolkata 700071  
 CIN: L70109WB1986PLC040864; Fax: 011 4265 4200



To,  
**Haryana Real Estate Regulatory Authority**  
 PWD Guest House, Old Railway Rd,  
 Civil Lines,  
 Gurugram, Haryana 122001

Date 09.09.2025

Dear Sir,

We, Ashiana Housing Limited, state the following timelines for Ashiana Aaroham Phase I.

Commercial Block	Sub structure (Normally 10%-15%)	Super structure (Normally 35% - 45%)	MEP (Normally 20% - 25%)	Finishing (Normally 20% - 25%)
Jan-Mar 25	0%	0%	0%	0%
Apr-Jun 25	0%	0%	0%	0%
Jul-Sep 25	0%	0%	0%	0%
Oct-Dec 25	0%	0%	0%	0%
Jan-Mar 26	0%	0%	0%	0%
Apr-Jun 26	0%	0%	0%	0%
Jul-Sep 26	0%	0%	0%	0%
Oct-Dec 26	30%	0%	0%	0%
Jan-Mar 27	30%	0%	0%	0%
Apr-Jun 27	40%	20%	0%	0%
Jul-Sep 27	0%	40%	0%	0%
Oct-Dec 27	0%	40%	0%	0%
Jan-Mar-28	0%	0%	20%	0%
Apr-Jun 28	0%	0%	20%	5%
Jul-Sep 28	0%	0%	25%	35%
Oct-Dec 28	0%	0%	14%	30%
Jan-Mar 29	0%	0%	15%	20%
Apr-Jun 29	0%	0%	6%	10%
<b>Total</b>	<b>100%</b>	<b>100%</b>	<b>100%</b>	<b>100%</b>

**Ashiana Housing Limited**

Branch Office : Ashiana Amarah, Sector- 93,  
 Gurgaon, Haryana- 122505  
 T: 9205946999; W: ashianahousing.com

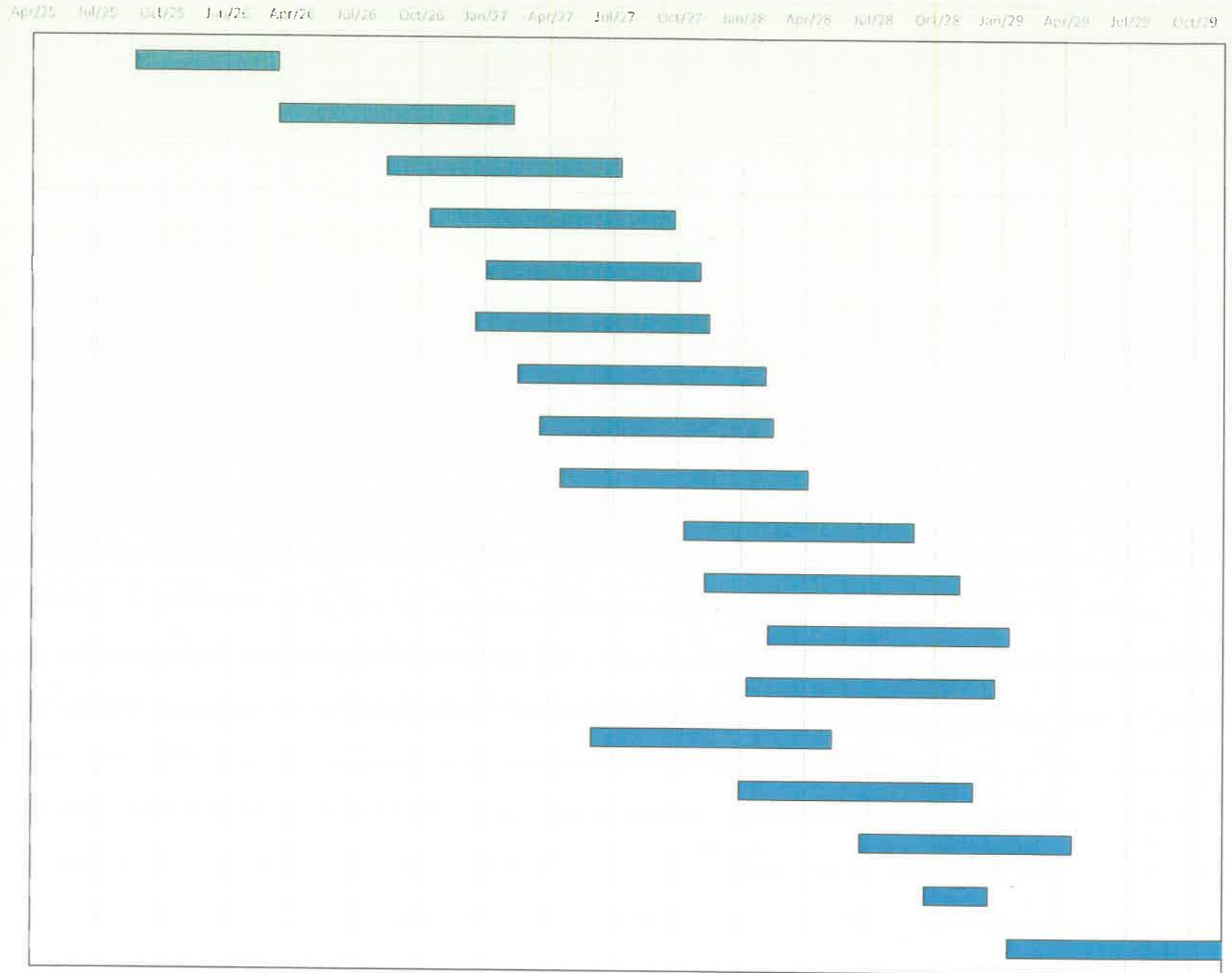
Regd. Office : 5F Everest.46/C Chowringhee Road, Kolkata 700071  
 CIN: L70109WB1986PLC040864; Fax: 011 4265 4200



Ashiana Aaroham T3

Submission in RERA for registration =

S.No.	Description	Start Date	Duration	Finish Date
1	Foundation	15-Sep-25	200	3-Apr-26
2	RCC super structure	4-Apr-26	331	1-Mar-27
3	Brick Work	4-Sep-26	330	31-Jul-27
4	Internal Plaster	3-Nov-26	345	14-Oct-27
5	Tiles Work	22-Jan-27	302	20-Nov-27
6	External Plaster	7-Jan-27	330	3-Dec-27
7	POP Work	8-Mar-27	350	21-Feb-28
8	Door Shutter Fixing	8-Apr-27	330	3-Mar-28
9	Aluminium Window	7-May-27	350	21-Apr-28
10	Electrical wiring & Fittings and testing	29-Oct-27	325	18-Sep-28
11	Internal Painting	28-Nov-27	360	22-Nov-28
12	CP & Vitreous Fittings	26-Feb-28	340	31-Jan-29
13	External Painting	27-Jan-28	350	11-Jan-29
14	Fire Fighting	21-Jun-27	340	26-May-28
15	Lift	17-Jan-28	330	12-Dec-28
16	Solar	5-Jul-28	300	1-May-29
17	DORB	5-Oct-28	90	3-Jan-29
18	Final finishing and hand over	31-Jan-29	300	27-Nov-29



Ashiana Aaroham T4

Submission in RERA for registration =

S.No.	Description	Start Date	Duration	Finish Date
1	Foundation	19-Oct-25	200	7-May-26
2	RCC super structure	8-May-26	331	4-Apr-27
3	Brick Work	8-Oct-26	330	3-Sep-27
4	Internal Plaster	7-Dec-26	345	17-Nov-27
5	Tiles Work	25-Feb-27	302	24-Dec-27
6	External Plaster	10-Feb-27	330	6-Jan-28
7	POP Work	11-Apr-27	350	26-Mar-28
8	Door Shutter Fixing	12-May-27	330	6-Apr-28
9	Aluminium Window	10-Jun-27	350	25-May-28
10	Electrical wiring & Fittings and testing	2-Dec-27	325	22-Oct-28
11	Internal Painting	1-Jan-28	360	26-Dec-28
12	CP & Vitreous Fittings	31-Mar-28	340	6-Mar-29
13	External Painting	1-Mar-28	350	14-Feb-29
14	Fire Fighting	25-Jul-27	340	29-Jun-28
15	Lift	20-Feb-28	330	15-Jan-29
16	Solar	8-Aug-28	300	4-Jun-29
17	DORB	8-Nov-28	90	6-Feb-29
18	Final finishing and hand over	6-Mar-29	300	31-Dec-29



Ashiana Aaroham Ph 1

Submission in RERA for registration =

S.No.	Description	Start Date	Duration	Finish Date
1	Foundation	15-Sep-25	200	3-Apr-26
2	RCC super structure	4-Apr-26	331	1-Mar-27
3	Brick Work	4-Sep-26	330	31-Jul-27
4	Internal Plaster	3-Nov-26	345	14-Oct-27
5	Tiles Work	22-Jan-27	302	20-Nov-27
6	External Plaster	7-Jan-27	330	3-Dec-27
7	POP Work	8-Mar-27	350	21-Feb-28
8	Door Shutter Fixing	8-Apr-27	330	3-Mar-28
9	Aluminium Window	7-May-27	350	21-Apr-28
10	Electrical wiring & Fittings and testing	29-Oct-27	325	18-Sep-28
11	Internal Painting	28-Nov-27	360	22-Nov-28
12	CP & Vitreous Fittings	26-Feb-28	340	31-Jan-29
13	External Painting	27-Jan-28	350	11-Jan-29
14	Fire Fighting	21-Jun-27	340	26-May-28
15	Lift	17-Jan-28	330	12-Dec-28
16	Solar	5-Jul-28	300	1-May-29
17	DORB	5-Oct-28	90	3-Jan-29
18	Final finishing and hand over	31-Jan-29	334	31-Dec-29



**Ashiana Aaroham Commercial**

Submission in RERA for registration =

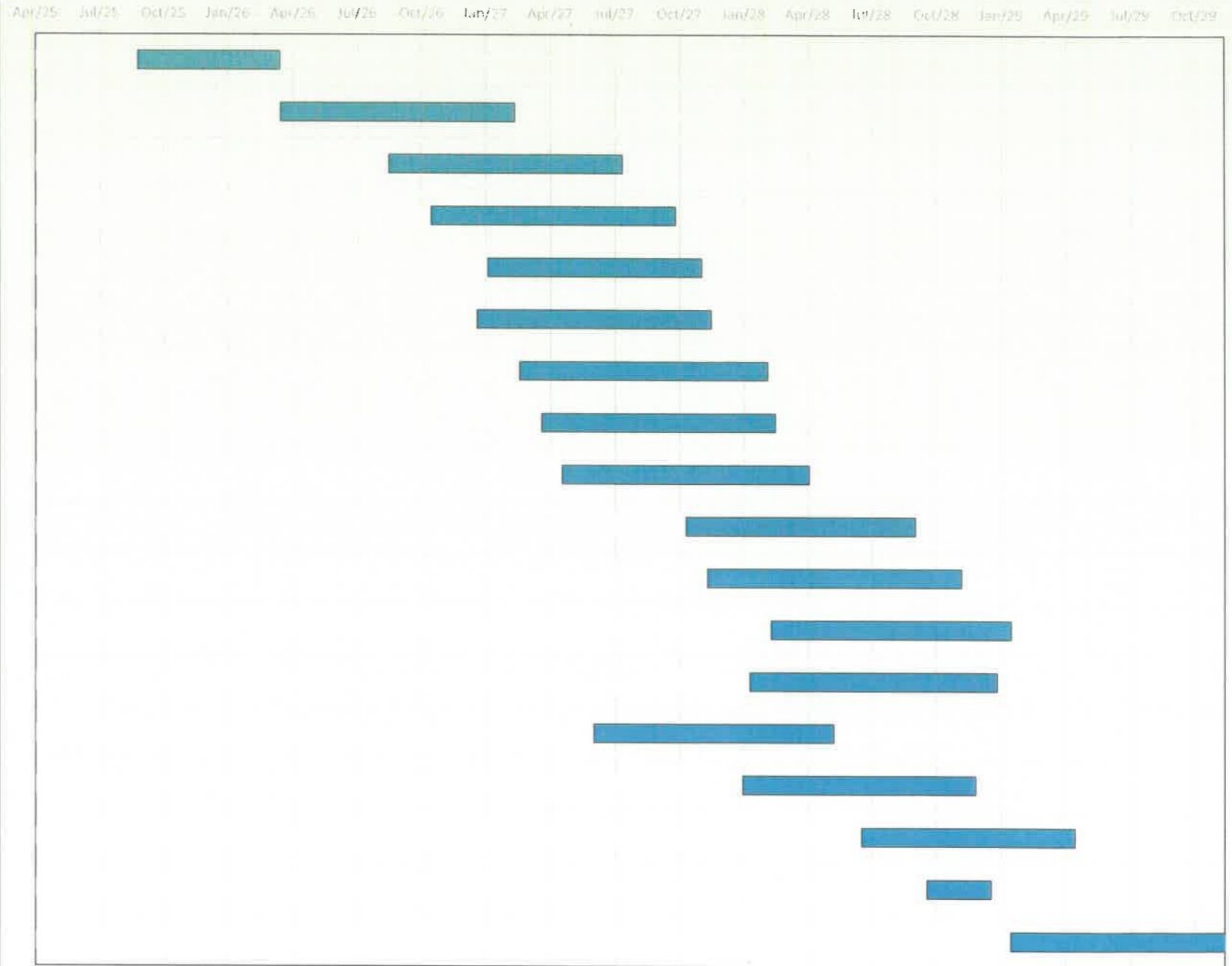
S.No.	Description	Start Date	Duration	Finish Date
1	Foundation	30-Oct-26	100	7-Feb-27
2	RCC super structure	8-Feb-27	180	7-Aug-27
3	Brick Work	24-May-27	180	20-Nov-27
4	Internal Plaster	8-Jul-27	180	4-Jan-28
5	Tiles Work	22-Aug-27	260	8-May-28
6	External Plaster	22-Aug-27	260	8-May-28
7	POP Work	6-Oct-27	280	12-Jul-28
8	Door Shutter Fixing	6-Nov-27	200	24-May-28
9	Window	5-Dec-27	250	11-Aug-28
10	Electrical wiring & Fittings and testing	19-Jan-28	225	31-Aug-28
11	Internal Painting	18-Feb-28	200	5-Sep-28
12	CP & Vitreous Fittings	18-Apr-28	200	4-Nov-28
13	External Painting	18-Apr-28	250	24-Dec-28
14	Fire Fighting	19-Jan-28	240	15-Sep-28
15	Solar (If Req.)	17-Jun-28	200	3-Jan-29
16	DORB	17-Oct-28	90	15-Jan-29
17	Final finishing and hand over	4-Nov-28	180	3-May-29



Ashiana Aaroham Club House

Submission in RERA for registration =

S.No.	Description	Start Date	Duration	Finish Date
1	Foundation	15-Sep-25	150	12-Feb-26
2	RCC super structure	13-Feb-26	180	12-Aug-26
3	Brick Work	29-May-26	180	25-Nov-26
4	Internal Plaster	13-Jul-26	180	9-Jan-27
5	Tiles Work	27-Aug-26	302	25-Jun-27
6	External Plaster	27-Aug-26	330	23-Jul-27
7	POP Work	11-Oct-26	350	26-Sep-27
8	Door Shutter Fixing	11-Nov-26	330	7-Oct-27
9	Aluminium Window	10-Dec-26	350	25-Nov-27
10	Electrical wiring & Fittings and testing	24-Jan-27	325	15-Dec-27
11	Internal Painting	23-Feb-27	360	18-Feb-28
12	CP & Vitreous Fittings	24-Apr-27	340	29-Mar-28
13	External Painting	24-Apr-27	350	8-Apr-28
14	Fire Fighting	24-Jan-27	340	30-Dec-27
15	Lift	14-Apr-27	330	9-Mar-28
16	Solar	1-Oct-27	300	27-Jul-28
17	DORB	1-Jan-28	90	31-Mar-28
18	Final finishing and hand over	29-Mar-28	365	29-Mar-29



Development work																							
Sr No	ACTIVITY WISE % AGE	Jan-Mar 25	Apr-Jun 25	Jul-Sep 25	Oct-Dec 25	Jan-Mar 26	Apr-Jun 26	Jul-Sep 26	Oct-Dec 26	Jan-Mar 27	Apr-Jun 27	Jul-Sep 27	Oct-Dec 27	Jan-Mar-28	Apr-Jun 28	Jul-Sep 28	Oct-Dec 28	Jan-Mar 29	Apr-Jun 29	Jul-Sep 29	Oct-Dec 29	Total	
1	Internal Roads and Pavements	0%	0%	0%	0%	0%	0%	0%	0%	76%	24%	0%	0%	0%	0%	0%	0%	0%	0%	0%	0%	100%	
2	Water Supply system	0%	0%	0%	0%	0%	0%	0%	0%	90%	10%	0%	0%	0%	0%	0%	0%	0%	0%	0%	0%	100%	
3	Storm Water drainage	0%	0%	0%	0%	0%	0%	0%	90%	10%	0%	0%	0%	0%	0%	0%	0%	0%	0%	0%	0%	100%	
4	Sewerage system	0%	0%	0%	0%	0%	30%	50%	20%	0%	0%	0%	0%	0%	0%	0%	0%	0%	0%	0%	0%	100%	
5	Street Lighting	0%	0%	0%	0%	0%	0%	0%	0%	0%	0%	0%	85%	15%	0%	0%	0%	0%	0%	0%	0%	100%	
6	Play grounds and Parks	0%	0%	0%	0%	0%	0%	0%	0%	0%	12%	37%	37%	10%	4%	0%	0%	0%	0%	0%	0%	100%	
7	Electricity supply system	0%	0%	0%	0%	0%	0%	0%	0%	0%	0%	0%	20%	20%	60%	0%	0%	s	0%	0%	0%	100%	
8	Security and Fire- Fighting	0%	0%	0%	0%	0%	0%	0%	25%	50%	25%	0%	0%	0%	0%	0%	0%	0%	0%	0%	0%	100%	
9	Renewable energy system	0%	0%	0%	0%	0%	0%	0%	0%	0%	0%	0%	0%	50%	50%	0%	0%	0%	0%	0%	0%	100%	
10	Parking	0%	0%	0%	0%	0%	0%	0%	0%	100%	0%	0%	0%	0%	0%	0%	0%	0%	0%	0%	0%	100%	
11	STP	0%	0%	0%	0%	0%	0%	0%	25%	25%	25%	25%	0%	0%	0%	0%	0%	0%	0%	0%	0%	100%	
12	Underground water tank	0%	0%	0%	0%	0%	20%	20%	30%	30%	0%	0%	0%	0%	0%	0%	0%	0%	0%	0%	0%	100%	
13	Rain water harvesting	0%	0%	0%	0%	0%	0%	0%	50%	50%	0%	0%	0%	0%	0%	0%	0%	0%	0%	0%	0%	100%	
14	Electrical sub station	0%	0%	0%	0%	0%	0%	0%	11%	33%	33%	23%	0%	0%	0%	0%	0%	0%	0%	0%	0%	100%	
15	Community building	0%	0%	2%	5%	11%	12%	5%	5%	10%	11%	7%	7%	7%	7%	5%	3%	4%	0%	0%	0%	100%	
16	Commercial Block	0%	0%	0%	0%	0%	0%	0%	8%	8%	15%	10%	10%	5%	6%	15%	11%	9%	4%	0%	0%	100%	
17	Others	0%	0%	0%	0%	6%	6%	6%	6%	6%	7%	9%	8%	8%	8%	6%	6%	6%	4%	4%	6%	6%	100%

Development work																						
Tower 3	ACTIVITY WISE % AGE	Jan-Mar 25	Apr-Jun 25	Jul-Sep 25	Oct-Dec 25	Jan-Mar 26	Apr-Jun 26	Jul-Sep 26	Oct-Dec 26	Jan-Mar 27	Apr-Jun 27	Jul-Sep 27	Oct-Dec 27	Jan-Mar-28	Apr-Jun 28	Jul-Sep 28	Oct-Dec 28	Jan-Mar 29	Apr-Jun 29	Jul-Sep 29	Oct-Dec 29	Total
1	Sub structure (Normally 10%-15%)			29%	43%	29%	0%	0%	0%	0%	0%	0%	0%	0%	0%	0%	0%	0%	0%	0%	0%	100%
2	Super structure (Normally 35% - 45%)	0%	0%	0%	0%	20%	20%	20%	20%	20%	0%	0%	0%	0%	0%	0%	0%	0%	0%	0%	0%	100%
3	MEP (Normally 20% - 25%)	0%	0%	0%	0%	0%	0%	0%	11%	17%	17%	17%	17%	15%	6%	0%	0%	0%	0%	0%	0%	100%
4	Finishing (Normally 20% - 25%)	0%	0%	0%	0%	0%	0%	0%	4%	4%	8%	10%	12%	12%	12%	12%	12%	4%	4%	4%	5%	100%

Development work																						
Tower 4	ACTIVITY WISE % AGE	Jan-Mar 25	Apr-Jun 25	Jul-Sep 25	Oct-Dec 25	Jan-Mar 26	Apr-Jun 26	Jul-Sep 26	Oct-Dec 26	Jan-Mar 27	Apr-Jun 27	Jul-Sep 27	Oct-Dec 27	Jan-Mar-28	Apr-Jun 28	Jul-Sep 28	Oct-Dec 28	Jan-Mar 29	Apr-Jun 29	Jul-Sep 29	Oct-Dec 29	Total
1	Sub structure (Normally 10%-15%)			29%	43%	29%	0%	0%	0%	0%	0%	0%	0%	0%	0%	0%	0%	0%	0%	0%	0%	100%
2	Super structure (Normally 35% - 45%)	0%	0%	0%	0%	20%	20%	20%	20%	20%	0%	0%	0%	0%	0%	0%	0%	0%	0%	0%	0%	100%
3	MEP (Normally 20% - 25%)	0%	0%	0%	0%	0%	0%	0%	11%	17%	17%	17%	17%	15%	6%	0%	0%	0%	0%	0%	0%	100%
4	Finishing (Normally 20% - 25%)	0%	0%	0%	0%	0%	0%	0%	4%	4%	8%	10%	12%	12%	12%	12%	12%	4%	4%	4%	5%	100%



Development work																						
Commercial	ACTIVITY WISE % AGE	Jan-Mar 25	Apr-Jun 25	Jul-Sep 25	Oct-Dec 25	Jan-Mar 26	Apr-Jun 26	Jul-Sep 26	Oct-Dec 26	Jan-Mar 27	Apr-Jun 27	Jul-Sep 27	Oct-Dec 27	Jan-Mar-28	Apr-Jun 28	Jul-Sep 28	Oct-Dec 28	Jan-Mar 29	Apr-Jun 29	Jul-Sep 29	Oct-Dec 29	Total
1	Sub structure (Normally 10%-15%)			0%	0%	0%	0%	0%	30%	30%	40%	0%	0%	0%	0%	0%	0%	0%	0%	0%	0%	100%
2	Super structure (Normally 35% - 45%)	0%	0%	0%	0%	0%	0%	0%	0%	0%	20%	40%	40%	0%	0%	0%	0%	0%	0%	0%	0%	100%
3	MEP (Normally 20% - 25%)	0%	0%	0%	0%	0%	0%	0%	0%	0%	0%	0%	0%	20%	20%	25%	14%	15%	6%	0%	0%	100%
4	Finishing (Normally 20% - 25%)	0%	0%	0%	0%	0%	0%	0%	0%	0%	0%	0%	0%	0%	5%	35%	30%	20%	10%	0%	0%	100%

