

This drawing is a COPYRIGHT
contents of this drawing or
part thereof may not be used
or reproduced without the
permission of the Architect

REV	DATE	DESCRIPTION	BY
01	10-02-2015	CLEAR SITE	GPC
02			
03			
04			
05			
06			
07			
08			
09			
10			

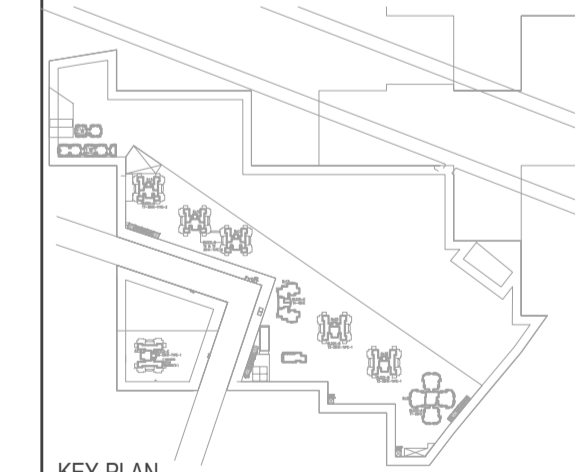
GENERAL NOTES
1. All dimensions are in mm unless mentioned otherwise
2. No dimensions are to be scaled from this drawing.
3. Contractors must verify all dimensions on site before

CLIENT TO CHECK HFL OF CITY DRAIN PUMPING
SHALL BE REQUIRED IN CASE HFL OF CITY DRAIN
IS HIGHER THAN IL OF INTERNAL STORM DRAIN

- PLUMBING NOTES:**
- 1) THIS DRAWING REPRESENTS PLUMBING DETAILS ONLY. FOR ARCH./STRUCTURAL/ELECTRICAL DETAILS, REFER RELEVANT DRAWINGS.
 - 2) ANY DISCREPANCY MUST BE BROUGHT TO THE NOTICE OF ARCHITECT / CONSULTANT.
 - 3) FOR STORM WATER DRAINAGE PIPES USE R.C.C. PIPES CLASS-IP2
 - 4) MAN HOLE (FOR SEWERAGE SYSTEM) :-
- SIZE - (900x600 mm FOR DEPTH 900 mm) OR SPECIFIED IN BOQ
- SIZE - (1200x600 mm FOR DEPTH 900 mm TO 2400 mm) OR SPECIFIED IN BOQ.
 - 5) CATCH BASIN (FOR STORM WATER DRAINAGE SYSTEM) :-
- SIZE - 500x450 mm FOR DEPTH 300 mm TO 600 mm
- SIZE - 600x600 mm FOR DEPTH 600 mm TO 750 mm
- SIZE - 750x750 mm FOR DEPTH 750 mm TO 900 mm
- SIZE - 900x900 mm FOR DEPTH 900 mm TO 1200 mm
 - 6) PLEASE CHECK THE INVERT / HIGH FLOOD LEVEL OF DRAIN, IL LEVEL OF M.H OF MAIN CITY LINE BEFORE CONNECTION TO IT. IN CASE - THE LEVEL OF DRAIN IS HIGHER, PROVISION OF SLUMP WITH PUMP TO BE KEPT.
 - 7) C.B. DEEP AT START 300MM (TYPICAL) / BASEMENT NOT TOWER AREA
 - 8) C.B. TO C.B. 1500 RCC PIPE

LEGEND:-

	WATER SUPPLY FROM HUDA CITY MAIN
	TUBE WALL LINE
	GARDEN HYDRANT LINE
	GARDEN HYDRANT
	RAIN WATER HARVESTING PIT WITH 150MM CHAMBER SIZE 20x1.0M
	STORM WATER DRAINAGE LINE / MANHOLE
	SEWERAGE LINE / MANHOLE
	CATCH BASIN
	SAUCER DRAIN



CLIENT
TODAY HOUSING

PROJECT
GROUP HOUSING PROJECT
"CANARY GREENS" ON 21.637 ACRES
AT SECTOR-73, VILLAGE BHRAMPUR,
GURGAON, HARYANA.

DATE	DESIGN BY	PROJ. MGR.
21-JAN-2015	V.NAGPAL / V.BHATT	ASHOK BAKHENA
1:500	VJAY PATAWAL	ANAND B.

SITE PLAN FOR EXTERNAL SERVICES

PLUMBING DRAWING

DRAWN BY
C. P. KUKREJA ASSOCIATES
ASHIRWAD BUILDING,
D-1, GREEN PARK,
NEW DELHI - 110016
PHONE - 26863953 Fax - 26865770
EMAIL - cpka@cpkukreja.com

DRAWING NO.	REVISION
10007/TH-CANARY GREENS/WORK/P-SP001	R0
DRAWN BY	
DATE	
VSS, WORKING/10047 HOUSING /PLUMBING /LATEST/SP001	

