

D.T.P  
A.T.P - RAJ  
S.O - RAJ  
P.E - RAJ



	PERMISSIBLE			PROPOSED		
	AREA	AREA	PERCENTAGE	AREA	AREA	PERCENTAGE
	ACRES	SQMT.	%	ACRES	SQMT.	%
EXISTING LICENCED AREA (A)	20.60902	83401.736				
ADDITIONAL LICENCED AREA (B)	2.69097	10889.968				
<b>NET LAND AREA (A+B)</b>	<b>23.29999</b>	<b>94291.704</b>				
ORGANIZED OPEN SPACE (Calculated on net balance area)	1.74750	7071.878	7.50	1.74752	7071.952	7.5001
COMMUNITY FACILITIES (Calculated on net balance area)	2.33000	9429.170	10.00	2.33005	9429.370	10.0002
COMMERCIAL AREA (Calculated on net balance area)	0.93200	3771.668	4.00	0.93094	3767.377	3.995
AREA UNDER PLOTS (Calculated on net balance area)	14.21301	57517.939	61.00	13.39126	54192.411	57.473
TOTAL RESI. & COMM. AREA (Calculated on net balance area)	15.14502	61289.608	65.00	14.32220	57959.788	61.469
PERMISSIBLE DENSITY	240-400 PPA		MINIMUM REQUIRED PLOTS	310.67		
ACHIEVED DENSITY @18 PERSON PER PLOT	321.37 PPA		ACHIEVED PLOTS	416		

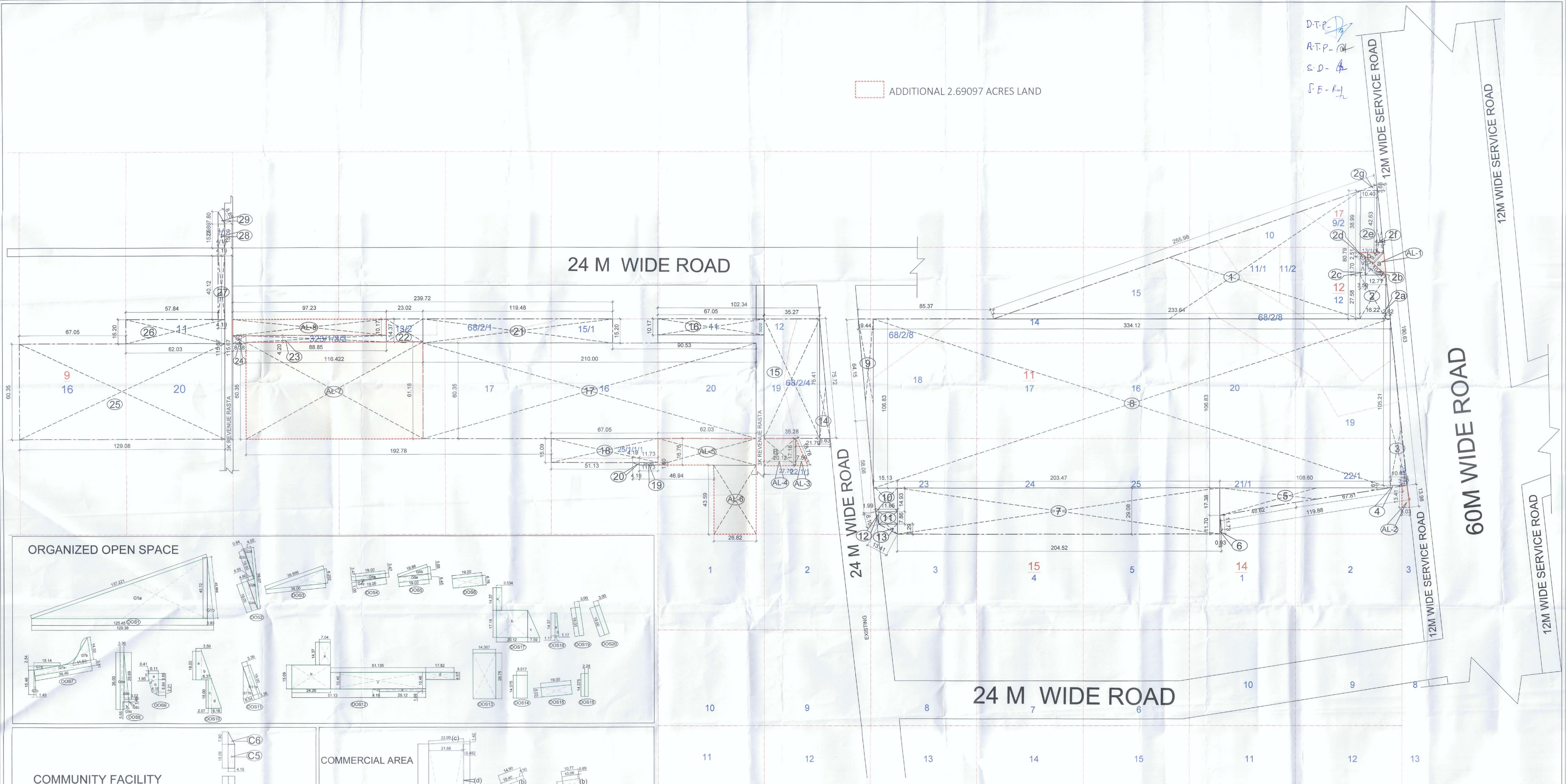
DETAIL OF PLOTS							
S.NO	PLOT TYPE	PLOT NUMBER	WIDTH	LENTH	AREA PER PLOT (IN SQMT.)	TOTAL AREA (IN SQMT.)	
1	A	A-1 - A-18	7.800	19.000	148.200	128	18969.600
		A-19 - A-37					
		A-38 - A-41					
		A-42 - A-46					
		A-47 - A-61					
		A-62 - A-80					
		D-75 - D-84					
		A-109 - A-118					
		D-75 - D-84					
		B-1 - B-10					
2	B	B-11 - B-21	7.800	18.000	140.400	114	16005.600
		B-22 - B-50					
		B-51 - B-79					
		B-80 - B-105					
		B-106 - B-114					
		C-1 - C-4					
		C-5 - C-8					
		C-9 - C-12					
		D-1 - D-14					
		D-15 - D-42					
3	C	C-13 - C-16	7.320	14.375	105.225	12	1282.700
		C-17 - C-27					
		C-28 - C-37					
		C-38 - C-42					
		C-43 - C-70					
		D-85 - D-112					
		D-113 - D-119					
		D-120 - D-125					
		D-126 - D-131					
		D-132 - D-138					
4	D	D-139 - D-152	7.500	14.375	107.813	136	14878.125
		D-153 - D-162					
		D-163 - D-170					
		D-171 - D-177					
		D-178 - D-184					
		D-185 - D-191					
		D-192 - D-198					
		D-199 - D-205					
		D-206 - D-212					
		D-213 - D-219					
5	E	E-1 - E-11	7.473	17.822	133.184	11	1465.022
		E-12 - E-16					
		E-17 - E-19					
		E-20 - E-21					
		E-22 - E-23					
		E-24 - E-25					
		E-26 - E-27					
		E-28 - E-29					
		E-30 - E-31					
		E-32 - E-33					
6	F	F-1 - F-11	9.000	14.375	129.375	4	517.500
		F-12 - F-13					
		F-14 - F-15					
		F-16 - F-17					
		F-18 - F-19					
		F-20 - F-21					
		F-22 - F-23					
		F-24 - F-25					
		F-26 - F-27					
		F-28 - F-29					
7	P1	P1-1 - P1-1	(( 8.557+8.227 )/2 X 19.0 )	140.445	1	140.445	
		P1-2 - P1-2					
		P1-3 - P1-3					
		P1-4 - P1-4					
		P1-5 - P1-5					
		P1-6 - P1-6					
		P1-7 - P1-7					
		P1-8 - P1-8					
		P1-9 - P1-9					
		P1-10 - P1-10					
8	P2	P2-1 - P2-1	(( 7.132+5.549 )/2 X 18.0 )	114.130	1	114.130	
		P2-2 - P2-2					
		P2-3 - P2-3					
		P2-4 - P2-4					
		P2-5 - P2-5					
		P2-6 - P2-6					
		P2-7 - P2-7					
		P2-8 - P2-8					
		P2-9 - P2-9					
		P2-10 - P2-10					
9	P3	P3-1 - P3-1	(( 4.0+5.549 )/2 X 18.0 )	85.649	1	85.649	
		P3-2 - P3-2					
		P3-3 - P3-3					
		P3-4 - P3-4					
		P3-5 - P3-5					
		P3-6 - P3-6					
		P3-7 - P3-7					
		P3-8 - P3-8					
		P3-9 - P3-9					
		P3-10 - P3-10					
10	P4	P4-1 - P4-1	(( 9.0+7.566 )/2 X 18.0 )	147.387	1	147.387	
		P4-2 - P4-2					
		P4-3 - P4-3					
		P4-4 - P4-4					
		P4-5 - P4-5					
		P4-6 - P4-6					
		P4-7 - P4-7					
		P4-8 - P4-8					
		P4-9 - P4-9					
		P4-10 - P4-10					
11	P5	P5-1 - P5-1	(( 5.847+7.386 )/2 X 18.0 )	119.465	1	119.465	
		P5-2 - P5-2					
		P5-3 - P5-3					
		P5-4 - P5-4					
		P5-5 - P5-5					
		P5-6 - P5-6					
		P5-7 - P5-7					
		P5-8 - P5-8					
		P5-9 - P5-9					
		P5-10 - P5-10					
12	P6	P6-1 - P6-1	( 7.8 X ( 18.0+13.919 )/2 )	124.710	1	124.710	
		P6-2 - P6-2					
		P6-3 - P6-3					
		P6-4 - P6-4					
		P6-5 - P6-5					
		P6-6 - P6-6					
		P6-7 - P6-7					
		P6-8 - P6-8					
		P6-9 - P6-9					
		P6-10 - P6-10					
13	P7	P7-1 - P7-1	(( 7.222+5.668 )/2 X 14.375 )	94.710	1	94.710	
		P7-2 - P7-2					
		P7-3 - P7-3					
		P7-4 - P7-4					
		P7-5 - P7-5					
		P7-6 - P7-6					
		P7-7 - P7-7					
		P7-8 - P7-8					
		P7-9 - P7-9					
		P7-10 - P7-10					
14	P8	P8-1 - P8-1	(( 8.015+9.281 )/2 X 14.375 )	124.300	1	124.300	
		P8-2 - P8-2					
		P8-3 - P8-3					
		P8-4 - P8-4					
		P8-5 - P8-5					
		P8-6 - P8-6					
		P8-7 - P8-7					
		P8-8 - P8-8					
		P8-9 - P8-9					
		P8-10 - P8-10					
15	P9	P9-1 - P9-1	(( 10.545+9.281 )/2 X 14.375 )	142.469	1	142.469	
		P9-2 - P9-2					
		P9-3 - P9-3					
		P9-4 - P9-4					
		P9-5 - P9-5					
		P9-6 - P9-6					
		P9-7 - P9-7					
		P9-8 - P9-8					
		P9-9 - P9-9					
		P9-10 - P9-10					
<b>TOTAL</b>					<b>416</b>	<b>54192.411</b>	

DETAIL OF 50 % FROZEN PLOTS AS PER POLICY							
S.NO	PLOT TYPE	PLOT NUMBER	WIDTH	LENTH	AREA PER PLOT	NO OF PLOTS	TOTAL AREA
1	A	A-1 - A-18	7.800	19.000	148.200	73	10818.600
		A-19 - A-37					
		A-38 - A-41					
		A-42 - A-46					
		A-47 - A-61					
		A-62 - A-80					
		D-75 - D-84					
		B-7 - B-10					
		B-11 - B-15					
		B-16 - B-21					
2	B	B-22 - B-50	7.800	18.000	140.400	67	9406.800
		B-51 - B-79					
		B-80 - B-105					
		B-106 - B-114					
		C-1 - C-4					
		C-5 - C-8					
		C-9 - C-12					
		D-1 - D-14					
		D-15 - D-42					
		D-43 - D-70					
3	D	D-85 - D-112	7.500	14.375	107.813	42	4528.125
		D-113 - D-119					
		D-120 - D-125					
		D-126 - D-131					
		D-132 - D-138					
		D-139 - D-152					
		D-153 - D-162					
		D-163 - D-170					
		D-171 - D-177					
		D-178 - D-184					
4	E	E-1 - E-11	7.473	17.822	133.184	11	1465.022
		E-12 - E-16					
		E-17 - E-19					
		E-20 - E-21					
		E-22 - E-23					
		E-24 - E-25					
		E-26 - E-27					
		E-28 - E-29					
		E-30 - E-31					
		E-32 - E-33					
5	F	F-1 - F-11	9.000	14.375	129.375	4	517.500
		F-12 - F-13					
		F-14 - F-15					
		F-16 - F-17					
		F-18 - F-19					
		F-20 - F-21					
		F-22 - F-23					
		F-24 - F-25					
		F-26 - F-27					
		F-28 - F-29					
6	P7	P7-1 - P7-1	(( 7.222+5.668 )/2 X 14.375 )	94.710	1	94.710	
		P7-2 - P7-2					
		P7-3 - P7-3					
		P7-4 - P7-4					
		P7-5 - P7-5					
		P7-6 - P7-6					
		P7-7 - P7-7					
		P7-8 - P7-8					
		P7-9 - P7-9					
		P7-10 - P7-10					
7	P8	P8-1 - P8-1	(( 8.015+9.281 )/2 X 14.375 )	124.300	1	124.300	
		P8-2 - P8-2					
		P8-3 - P8-3					
		P8-4 - P8-4					
		P8-5 - P8-5					
		P8-6 - P8-6					
		P8-7 - P8-7					
		P8-8 - P8-8					
		P8-9 - P8-9					
		P8-10 - P8-10					
8	P9	P9-1 - P9-1	(( 10.545+9.281 )/2 X 14.375 )	142.469	1	142.469	
		P9-2 - P9-2					
		P9-3 - P9-3					
		P9-4 - P9-4					
		P9-5 - P9-5					
		P9-6 - P9-6					
		P9-7 - P9-7					
		P9-8 - P9-8					
		P9-9 - P9-9					
		P9-10 - P9-10					
<b>TOTAL =</b>					<b>200</b>	<b>27097.528</b>	
<b>MILK/VEGETABLE BOOTH</b>							
			<b>5.00</b>	<b>5.500</b>	<b>27.500</b>	<b>1</b>	<b>27.500</b>

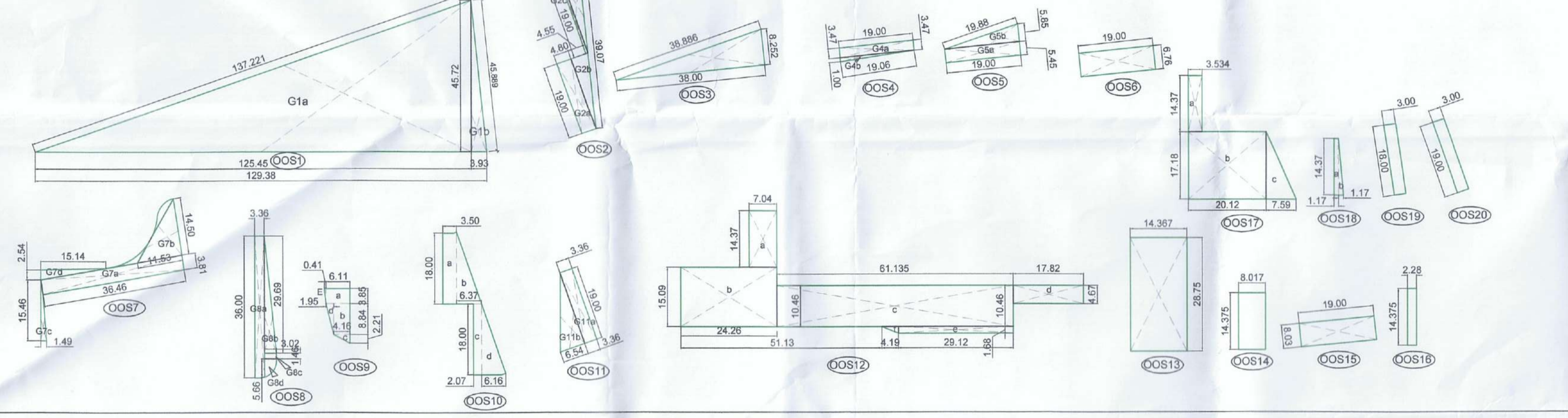
ORGANIZED OPEN SPACE CALCULATION						
S.NO.	AREA (IN SQMT.)	PERCENTAGE	NO OF PLOTS	TOTAL AREA	PERCENTAGE	TOTAL AREA
0001	128	1.36	128	18969.600	20.13	18969.600
0002	114	1.21	114	16005.600	16.97	16005.600
0003	12	0.13	12	1282.700	1.36	1282.700
0004	136	1.44	136	14878.125	15.78	14878.125
0005	11	0.12	11	1465.022	1.56	1465.022
0006	4	0.04	4	517.500	0.55	517.500
0007	1	0.01	1	94.710	0.10	94.710
0008	1	0.01	1	124.300	0.13	124.300
0009	1	0.01	1	142.469	0.15	142.469
0010	1	0.01	1	27.500	0.03	27.500
0011	1	0.01	1	27.500	0.03	27.500
0012	1	0.01	1	27.500	0.03	27.500
0013	1	0.01	1	27.500	0.03	27.500
0014	1	0.01	1	27.500	0.03	27.500
0015	1	0.01	1	27.500	0.03	27.500
0016	1	0.01	1	27.500	0.03	27.500
0017	1	0.01	1	27.500	0.03	27.500
0018	1	0.01	1	27.500	0.03	27.500
0019	1	0.01	1	27.500	0.03	27.500
0020	1	0.01	1	27.500	0.03	27.500
0021	1	0.01	1	27.500	0.03	27.500
0022	1	0.01	1	27.500	0.03	27.500
0023	1	0.01	1	27.500	0.03	27.500
0024	1	0.01	1	27.500	0.03	27.500
0025	1	0.01	1	27.500	0.03	27.500
0026	1	0.01	1	27.500	0.03	27.500
0027	1	0.01	1	27.500	0.03	27.500
0028	1	0.01	1	27.500	0.03	27.500
0029	1	0.01	1	27.500	0.03	27.500
0030	1	0.01	1	27.500	0.03	27.500
0031	1	0.01	1	27.500	0.03	27.500
0032	1	0.01	1	27.500	0.03	27.500
0033	1	0.01	1	27.500	0.03	27.500
0034	1	0.01	1	27.500	0.03	27.500
0035	1	0.01	1	27.500	0.03	27.500
0036	1	0.01	1	27.500	0.03	27.500
0037	1	0.01	1	27.500	0.03	27.500
0038	1	0.01	1	27.500	0.03	27.500
0039	1	0.01	1	27.500	0.03	27.500
0040	1	0.01	1	27.500	0.03	27.500
0041	1	0.01	1	27.500	0.03	27.500
0042	1	0.01	1	27.500	0.03	27.500
0043	1	0.01	1	27.500	0.03	27.500
0044	1	0.01	1	27.500	0.03	27.500
0045	1	0.01	1	27.500	0.03	27.500
0046	1	0.01	1	27.500	0.03	27.500
0047	1	0.01	1	27.500	0.03	27.500
0048	1	0.01	1	27.500	0.03	27.500
0049	1	0.01	1	27.500	0.03	27.500
0050	1	0.01	1	27.500	0.03	27.500
0051	1	0.01	1	27.500	0.03	27.500
0052	1	0.01	1	27.500	0.03	27.500
0053	1	0.01	1	27.500	0.03	27.500
0054	1	0.01	1	27.500	0.03	27.500
0055	1	0.01	1	27.500	0.03	27.500
0056	1	0.01	1	27.500	0.03	27.500
0057	1	0.01	1	27.500	0.03	27.500
0058	1	0.01	1	27.500		

ADDITIONAL 2.69097 ACRES LAND

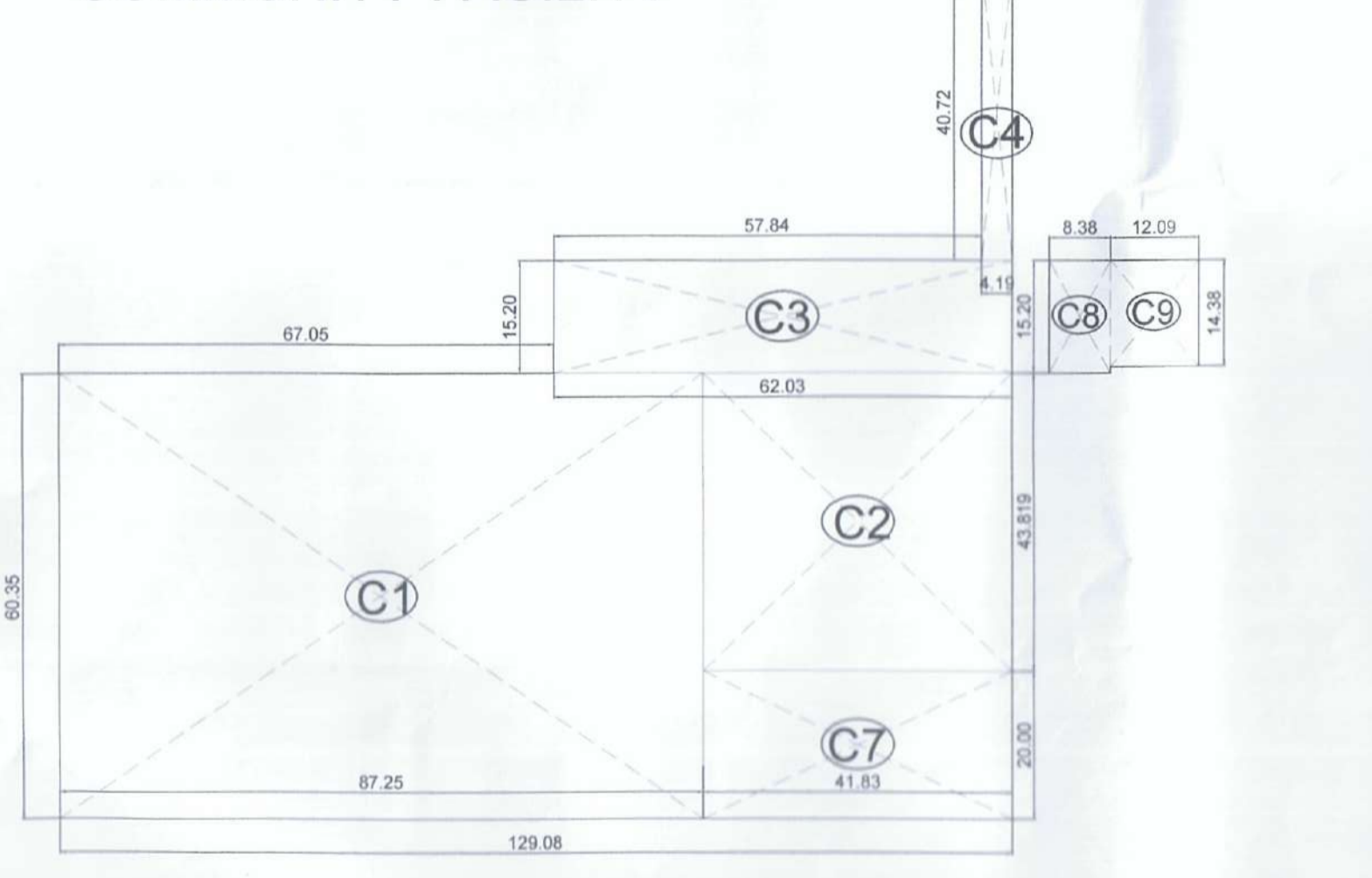
D.T.P. ✓  
A.T.P. ✓  
S.D. ✓  
E.E. ✓



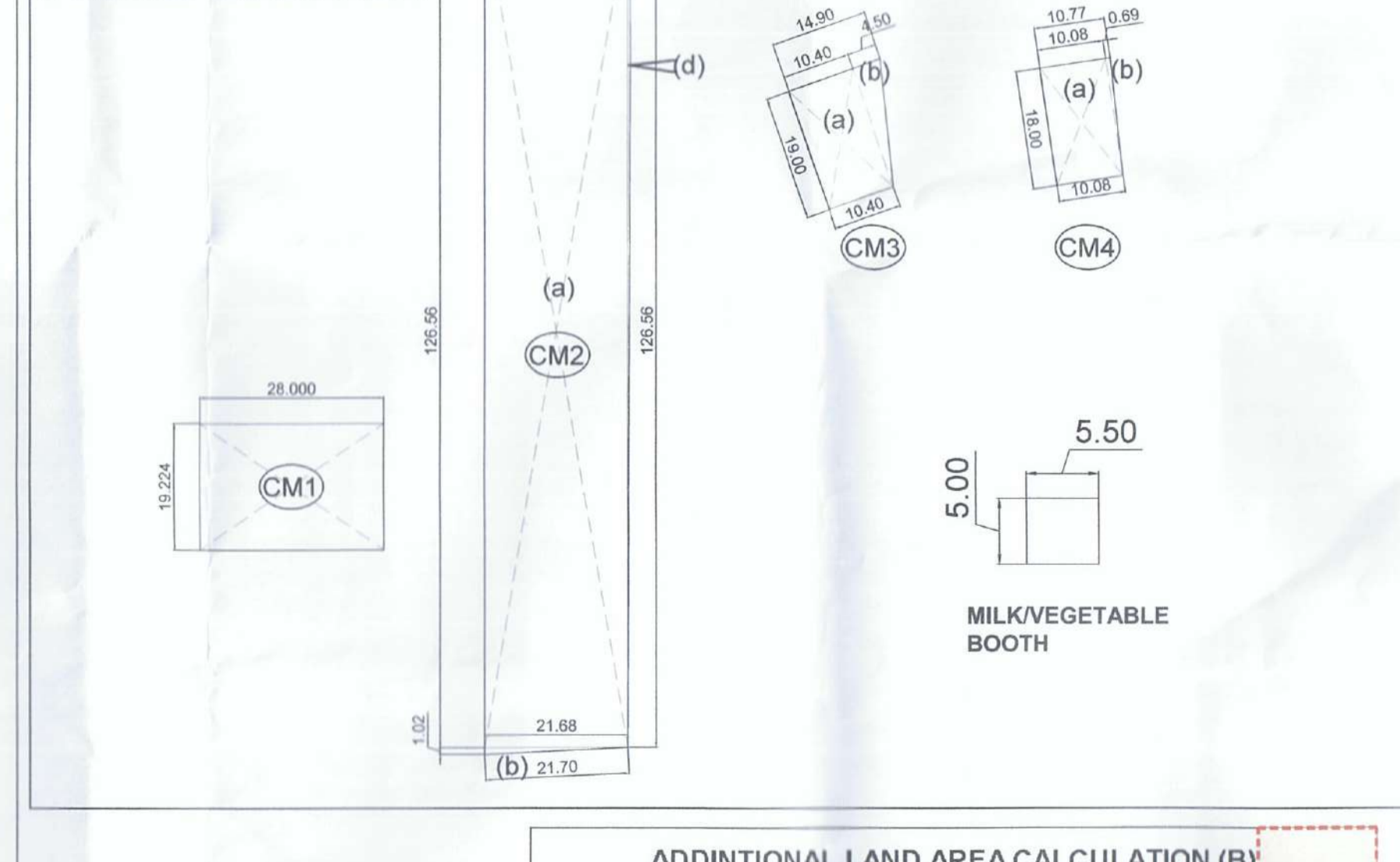
ORGANIZED OPEN SPACE



COMMUNITY FACILITY



COMMERCIAL AREA



COMMUNITY AREA CALCULATION

S.NO.	LENGTH(M) (a)	WIDTH(M) (b)	Nos.	AREA (IN SQMT.) (axbx)
C1	87.25	60.350	1	5265.54
C2	41.83	43.819	1	1832.96
C3	62.03	15.200	1	942.86
C4	4.19	40.720	1	170.62
C5	4.19	15.090	1	63.23
C6	4.19	7.800	0.5	16.34
C7	41.83	20.000	1	836.60
C8	8.38	15.200	1	127.38
C9	12.09	14.380	1	173.85
<b>TOTAL</b>				<b>9429.370</b>

COMMERCIAL AREA CALCULATION

S.NO.	LENGTH(M) (a)	WIDTH(M) (b)	Nos.	AREA (IN SQMT.) (axbx)
CM1	28.00	19.224	1	538.284
CM2a	21.69	126.56	1	2743.82
CM2b	21.69	1.02	0.5	11.08
CM2c	22.05	1.42	0.5	15.68
CM2d	0.462	126.56	0.5	30.51
CM3a	10.40	19.00	1	197.60
CM3b	4.50	19.00	0.5	42.75
CM4a	10.080	18.00	1	181.44
CM4b	0.692	18.00	0.5	6.23
<b>TOTAL AREA (IN SQMT.)</b>				<b>3787.377</b>

ADDITIONAL LAND AREA CALCULATION (B)

S.NO.	LENGTH(M) (a)	WIDTH(M) (b)	Nos.	AREA (IN SQMT.) (axbx)
AL-1a	9.430	10.64	0.5	50.17
AL-1b	9.430	10.92	0.5	51.49
AL-2	(3.33+5.03)/2	(13.41+13.98)/2	1	57.22
AL-3	7.59	17.180	0.5	65.20
AL-4	20.12	17.180	1	345.68
AL-5	62.03	10.780	1	1039.62
AL-6	26.82	43.59	1	1169.08
AL-7	116.422	61.180	1	7122.683
AL-8	97.23	10.170	1	988.83
<b>TOTAL AREA (IN SQMT.)</b>				<b>10889.968</b>
<b>TOTAL (IN ACRE)</b>				<b>2.69097</b>

EXISTING LAND AREA CALCULATION (A)

S.NO.	LENGTH(M) (a)	WIDTH(M) (b)	Nos.	AREA (IN SQMT.) (axbx)
1	233.64	80.78	0.5	9437.887
2	16.22	27.88	1	447.36
2a	2.82	27.88	0.5	38.89
2b	12.71	11.70	0.5	74.35
2c	3.50	11.70	1	40.95
2d	3.50	2.51	0.5	4.39
2e	10.40	38.99	1	405.90
2f	4.44	42.83	0.5	94.64
2g	10.40	3.680	0.5	19.14
3	10.63	105.20	0.5	559.14
4	10.63	1.61	0.5	8.56
5	108.60	17.38	0.5	943.73
6	0.950	11.70	0.5	5.44
7	203.47	29.08	1	5916.91
8	334.12	106.83	1	35664.04
9	9.44	106.83	0.5	504.24
10	15.13	14.83	1	225.80
11	11.85	7.86	1	93.14
12	1.99	7.86	0.5	7.82
13	11.85	6.29	0.5	37.27
14	8.63	73.41	0.5	249.98
15	35.28	75.41	1	2660.46
16	67.05	10.17	1	681.90
17	210.00	60.35	1	12670.50
18	67.05	15.69	1	1011.78
19	11.73	1.60	1	18.77
20	4.19	1.60	0.5	3.35
21	118.46	15.20	1	1816.10
22	23.02	14.37	1	330.80
23	88.85	4.20	1	373.17
24	8.38	5.03	1	42.15
25	120.08	60.35	1	7208.98
26	62.03	15.20	1	942.86
27	4.19	40.12	1	168.10
28	4.19	15.09	1	63.23
29	4.19	7.80	0.5	16.34
<b>TOTAL AREA (IN SQMT.)</b>				<b>83401.738</b>
<b>TOTAL (IN ACRE)</b>				<b>20.60802</b>


ORGANIZED OPEN SPACE CALCULATION

S.NO.	LENGTH(M) (a)	WIDTH(M) (b)	Nos.	AREA (IN SQMT.) (axbx)	TOTAL AREA (IN SQMT.)
O01a	125.45	45.72	0.5	2867.79	2867.85
O01b	3.60	45.72	0.5	82.84	2950.69
O02a	4.80	19.00	1	91.20	3041.89
O02b	4.55	19.00	0.5	43.20	3085.09
O02c	0.84	19.00	1	15.91	3101.00
O02d	4.55	19.00	0.5	43.20	3144.20
O03a	38.00	8.25	0.5	156.79	3300.99
O03b	3.47	19.00	1	65.93	3366.92
O04a	1.00	19.00	0.5	9.50	3376.42
O04b	5.45	19.00	1	103.55	3480.00
O04c	1.85	19.00	0.5	35.07	3515.07
O04d	16.00	6.76	1	108.38	3623.45
O07a	36.46	3.81	1	138.91	3762.36
O07b	11.53	14.90	0.5	85.59	3847.95
O07c	1.49	15.45	0.5	11.51	3859.46
O07d	15.14	2.54	0.5	19.25	3878.71
O08a	3.38	38.00	1	128.39	4007.10
O08b	3.02	29.89	0.5	44.83	4051.93
O08c	3.02	5.66	0.75	2.90	4054.83
O08d	6.11	3.85	1	23.52	4078.35
O08e	4.16	8.84	1	36.78	4115.13
O08f	4.16	2.21	0.5	4.60	4119.73
O08g	1.86	8.84	0.5	8.23	4127.96
O08h	0.41	3.85	0.5	0.79	4128.75
O08i	3.90	10.00	1	39.00	4167.75
O08j	1.86	10.00	0.5	9.30	4177.05
O08k	2.07	18.50	1	37.29	4214.34
O08l	6.19	19.00	0.5	58.44	4272.78
O08m	3.39	19.00	1	64.50	4337.28
O08n	6.19	19.00	1	117.61	4454.89
O08o	7.04	14.37	1	101.19	4556.08
O08p	24.26	10.99	1	266.09	4822.17
O08q	61.135	10.46	1	638.47	5460.64
O08r	17.62	4.67	1	82.22	5542.86
O08s	26.12	1.68	1	43.88	5586.74
O08t	4.19	1.68	0.5	3.52	5590.26
O08u	14.86	28.75	1	427.17	6017.43
O08v	8.917	14.375	1	115.24	6132.67
O08w	19.00	8.03	1	152.56	6285.23
O08x	2.09	14.375	1	30.00	6315.23
O08y	3.034	14.37	1	43.79	6359.02
O08z	29.12	17.88	1	519.89	6878.91
O08A	7.59	17.38	0.5	65.20	6944.11
O08B	1.17	14.37	0.5	8.41	6952.52
O08C	3.00	18.00	1	54.00	7006.52
O08D	3.00	19.00	1	57.00	7063.52
<b>TOTAL AREA (IN SQMT.)</b>				<b>7971.95</b>	

DEMARICATION PLAN FOR AN AFFORDABLE RESIDENTIAL PLOTTED COLONY (DDJAY) OVER AN ADDITIONAL AREA MEASURING 2.69097 ACRES (INCLUDING 0.61813 ACRES FRESH APPLIED LAND AND 1.11875 ACRES UNDER MIGRATION FROM LICENSE NO.107 OF 2010 AND AN AREA MEASURING 0.89097 ACRES UNDER MIGRATION FROM LICENSE NO. 63 OF 2009) IN ADDITION TO EARLIER GRANTED LICENSE NO. 68 OF 2021 IN THE REVENUE ESTATE OF VILLAGE BEHRAMPUR AND ULLAWAS, SECTOR-61, DISTRICT GURUGRAM-SUPOSHAA REALCON PVT. LTD.

OWNER'S NAME  
M/s. SUPOSHAA REALCON PRIVATE LIMITED.

DRAWING TITLE  
**DEMARICATION PLAN**

AUTHORIZED SIGNATORY  
  
For Suposhaa Realcon Pvt. Ltd.  
Authorized Signatory

ARCHITECT SIGNATURE

DATE:  
SHEET- 02 OF 02  
SCALE 1:125  
NORTH

  
RAJIV BANDHI  
ARCHITECT  
LIC. NO. CA/91/13857

