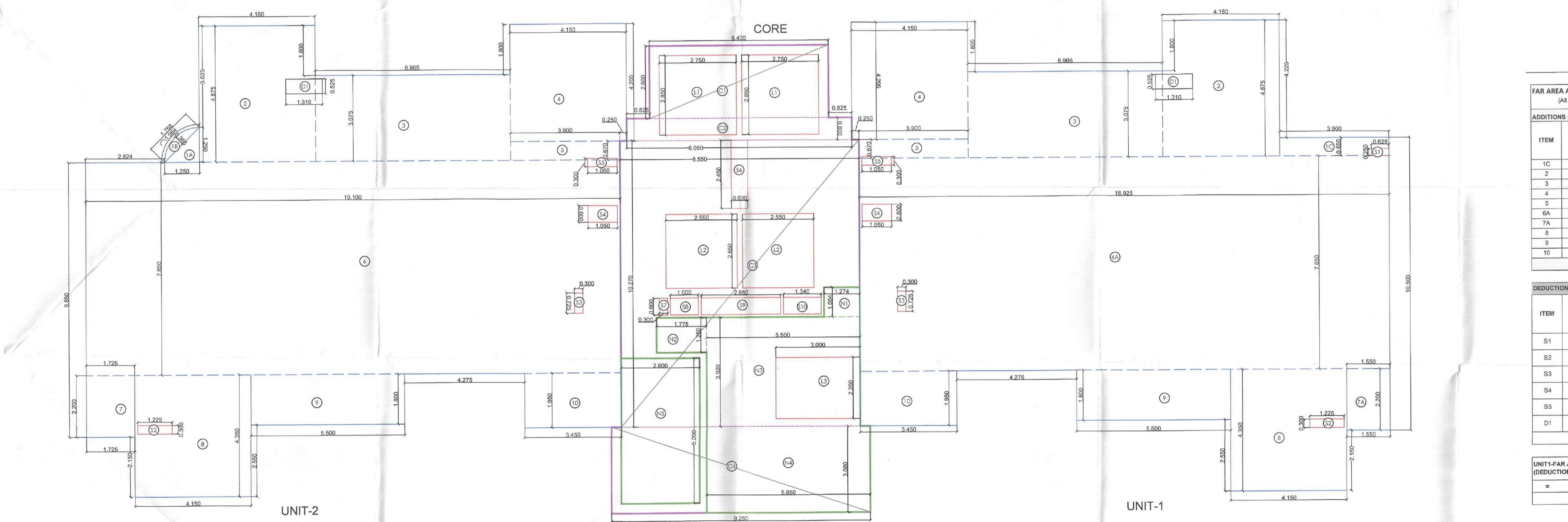


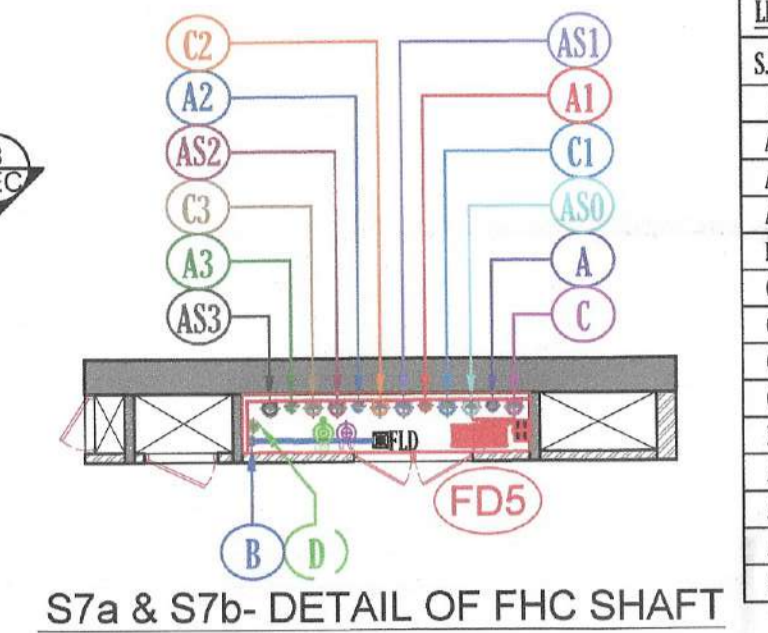
TOWER - 2
LOWER PENTHOUSE LEVEL
(LEVEL -38TH FLOOR (M +137.325M))

4 BHK LOWER PENTHOUSE LEVEL +
SERVICE PERSONNEL UNIT



TOWER - 2 LOWER PENTHOUSE AREA DIAGRAM (LEVEL -38TH FLOOR)

LEGEND PLUMBING PIPE		DOOR WINDOW SCHEDULE	
S.No.	DESCRIPTION	TYPE	REMARKS
1.	110 ØD UP WATER PIPE	D1	1100 2400 3.00 2400 BEDROOM
2.	110 ØD DOWN WATER PIPE	D2	750 2700 3.00 2700 KITCHEN
3.	110 ØD DOWN WASTE PIPE	D3	750 2400 3.00 2400 TOILETS
4.	110 ØD DOWN BALUNCE WASTE PIPE	D4	1500 2400 3.00 2400 M. BEDROOM
5.	110 ØD DOWN BALUNCE WASTE PIPE	D5	1250 2400 3.00 2400 MUNITY MACHINE ROOM
6.	110 ØD UP WATER PIPE	S01	1875 2700 3.00 2700 LIVINGDINING
7.	110 ØD UP WATER PIPE	S01A	4275 2700 3.00 2700 LIVINGDINING
8.	110 ØD UP WATER PIPE	S01B	7225 2700 3.00 2700 M. BEDROOM
9.	110 ØD UP WATER PIPE	S01C	6225 2700 3.00 2700 M. BEDROOM
10.	110 ØD UP WATER PIPE	S02	3275 2700 3.00 2700 LIVINGDINING
11.	110 ØD UP WATER PIPE	S02A	6275 2700 3.00 2700 LIVINGDINING
12.	110 ØD UP WATER PIPE	S03	3600 2700 3.00 2700 BEDROOM
13.	110 ØD UP WATER PIPE	S04	3225 2700 3.00 2700 M. BED ROOM
14.	110 ØD UP WATER PIPE	S06	2300 2700 3.00 2700 BEDROOM
15.	110 ØD UP WATER PIPE	S07	2700 2700 3.00 2700 BPU
16.	110 ØD DOWN WATER PIPE	S08	5550 2800 3.00 2700 LOUNGE
17.	110 ØD DOWN WATER PIPE	V1	2225 2800 3.00 2700 BEDROOM CORNER WINDOW
18.	110 ØD DOWN WATER PIPE	V2	1250 2800 3.00 2700 TOILET
19.	110 ØD DOWN WATER PIPE	V3	1275 2800 3.00 2700 TOILET
20.	110 ØD DOWN WATER PIPE	V4	1800 2800 3.00 2700 TOILET
21.	110 ØD DOWN WATER PIPE	V5	600 2800 3.00 2700 LOUNGE
22.	110 ØD DOWN WATER PIPE	V6	1025 2800 3.00 2700 LIFT LOBBY
23.	110 ØD DOWN WATER PIPE	V6A	825 2800 3.00 2700 LIFT LOBBY
24.	110 ØD DOWN WATER PIPE	V7	1800 2800 3.00 2700 LIFT LOBBY
25.	110 ØD DOWN WATER PIPE	V8	2550 2800 3.00 2700 LOUNGE
26.	110 ØD DOWN WATER PIPE	V9	1950 2800 3.00 2700 LIFT LOBBY
27.	110 ØD DOWN WATER PIPE	V10	2225 2800 3.00 2700 LIFT LOBBY
28.	110 ØD DOWN WATER PIPE	V11	1950 2800 3.00 2700 LIFT LOBBY
29.	110 ØD DOWN WATER PIPE	V12	2225 2800 3.00 2700 LIFT LOBBY
30.	110 ØD DOWN WATER PIPE	V13	525 2800 3.00 2700 LIFT LOBBY
31.	110 ØD DOWN WATER PIPE	V14	5275 2800 3.00 2700 FAMILY LOUNGE

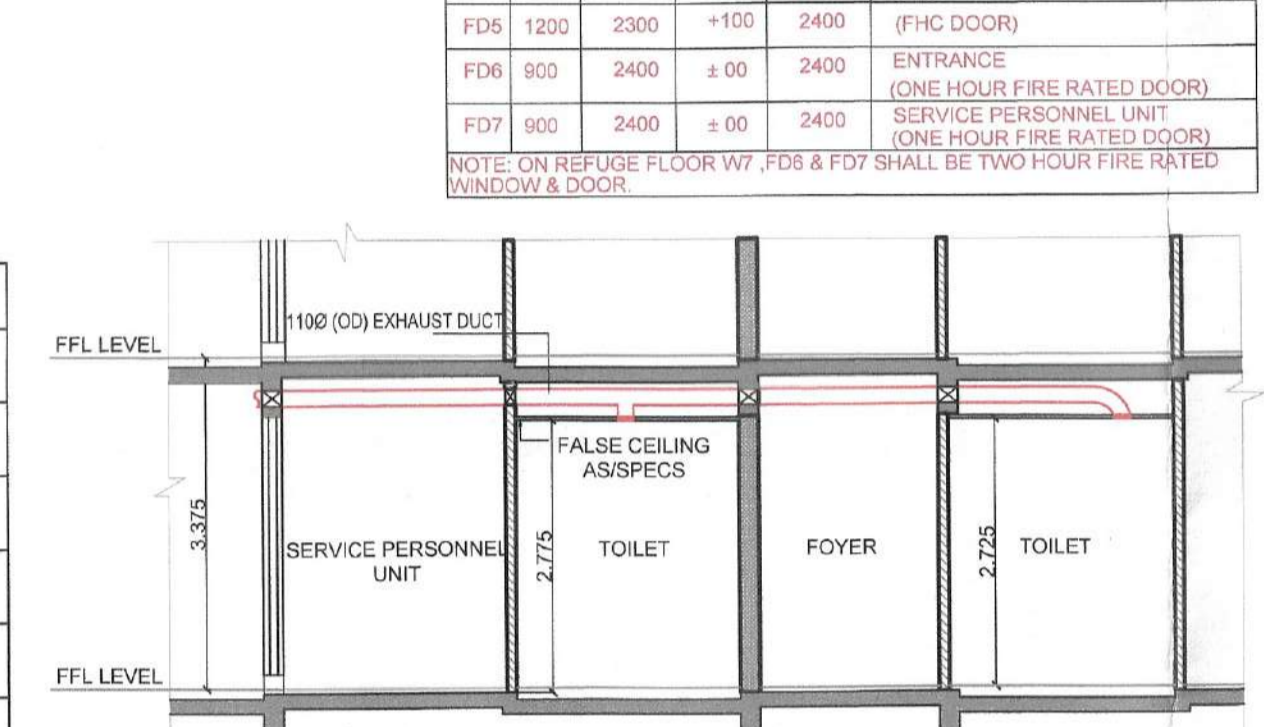


S7a & S7b - DETAIL OF FHC SHAFT

LEGEND:-
100 MM INTERNAL WALL

S.No.	DESCRIPTION	SIZE
S1	ELEC. SHAFT	1.05 X 0.60
S2	ST. PRESS SHAFT	0.95 X 1.35
S3	LOBBY PRESS. SHAFT	0.80 X 2.450
S4	LOBBY PRESS. SHAFT	0.80 X 1.050
S5	LV SHAFT	1 X 0.90
S6	PL SHAFT	0.30 X 0.60
S7a	FHC SHAFT	2.850 X 0.60
S7b	FHC SHAFT	3.290 X 0.60
S8a	ELEC. SHAFT	0.80 X 1.20
S8b	PL SHAFT	0.575 X 1.20
S8c	ELEC. SHAFT	0.575 X 1.095
S8d	PL SHAFT	0.575 X 1.07

S.No.	DESCRIPTION	SIZE
A1	110 ØD UP WATER PIPE FOR ZONE-1	
A2	110 ØD UP WATER PIPE FOR ZONE-2	
A3	110 ØD UP WATER PIPE FOR ZONE-3	
B	110 ØD DOWN WATER PIPE	
C	110 ØD SPENDER PIPE FOR ZONE-1	
D	110 ØD SPENDER PIPE FOR ZONE-2	
E	110 ØD SPENDER PIPE FOR ZONE-3	
F	110 ØD SPENDER PIPE FOR ZONE-4	
G	110 ØD FIRE MAIN PIPE	
H	110 ØD ALTERNATE SPENDER PIPE FOR ZONE-1	
I	110 ØD ALTERNATE SPENDER PIPE FOR ZONE-2	
J	110 ØD ALTERNATE SPENDER PIPE FOR ZONE-3	
K	110 ØD ALTERNATE SPENDER PIPE FOR ZONE-4	



S.NO	LOCATION	AREA	HEIGHT	VOLUME	ACH	DESIGN	SELECTED	SELECTED EXHAUST FAN
1	TYPICAL MECHANICAL VENTILATION CALCULATION FOR W.C. TOILET							
1.1	Bedroom & toilet	60.06	8.94	537	12	107.39	100	1 # 100 CFM INLINE FAN
1.2	SPU Toilet	40.26	8.94	360	12	71.98	100	1 # 100 CFM INLINE FAN

TOWER-2 83 FAR AREA AT LOWER PENT HOUSE UNIT 1 PER FLOOR					
(All Distances are in Meter & Areas in Sqm)					
ITEM	NO.S	WIDTH (MTR.)	LENGTH (MTR.)	AREA(SQ.M) T1 = NO.X LENGTH X WIDTH	
1C	1	3.900	0.850	3.315	
2	1	4.150	4.875	20.280	
3	1	6.965	3.075	21.417	
4	1	4.150	4.205	17.451	
5	1	3.900	0.870	3.393	
6A	1	18.025	7.650	137.778	
7A	1	1.580	2.200	3.470	
8	1	4.150	4.350	18.053	
9	1	5.500	1.800	9.900	
10	1	3.450	1.950	6.728	
TOTAL(A) =					247.162

CORE FAR AREA AT LOWER PENT HOUSE					
(All Distances are in Meter & Areas in Sqm)					
ITEM	NO.S	WIDTH (MTR.)	LENGTH (MTR.)	AREA(SQ.M) T1 = NO.X LENGTH X WIDTH	
C1	1	8.400	2.600	21.840	
C2	1	8.000	0.800	6.400	
C3	1	8.550	10.270	87.809	
C4	1	9.250	3.080	28.490	
TOTAL(A) =					139.379

UNIT 1 FAR AREA CALCULATION = ADDITION(A) - (DEDUCTION (B))						
= 247.162					- 2.374	= 244.788 SQMT

FAR AREA AT LOWER PENT HOUSE UNIT 2 PER FLOOR					
(All Distances are in Meter & Areas in Sqm)					
ITEM	NO.S	WIDTH (MTR.)	LENGTH (MTR.)	AREA(SQ.M) T1 = NO.X LENGTH X WIDTH	
1A	0.5	1.350	1.250	0.787	
1B	0.667	0.356	1.768	0.432	
2	1	4.160	4.875	20.280	
3	1	6.965	3.075	21.417	
4	1	4.150	4.205	17.451	
5	1	3.900	0.870	3.393	
6	1	19.000	7.650	145.115	
7	1	1.725	2.200	3.795	
8	1	4.150	4.350	18.053	
9	1	5.500	1.800	9.900	
10	1	3.450	1.950	6.728	
TOTAL(A) =					247.564

UNIT 2 FAR AREA CALCULATION = ADDITION(A) - (DEDUCTION (B))						
= 247.564					- 2.218	= 245.346 SQMT

CORE FAR AREA AT LOWER PENT HOUSE					
(All Distances are in Meter & Areas in Sqm)					
ITEM	NO.S	WIDTH (MTR.)	LENGTH (MTR.)	AREA(SQ.M) T1 = NO.X LENGTH X WIDTH	
C1	1	8.400	2.600	21.840	
C2	1	8.000	0.800	6.400	
C3	1	8.550	10.270	87.809	
C4	1	9.250	3.080	28.490	
TOTAL(A) =					139.379

SERVICE SHAFT (C)					
ITEM	NO.S	WIDTH (MTR.)	LENGTH (MTR.)	AREA(SQ.M) T1 = NO.X LENGTH X WIDTH	
L1	2	2.750	2.850	15.675	
L2	2	2.550	2.650	13.615	
S6	1	0.600	2.450	1.470	
S7	1	0.300	0.600	0.180	
S8	1	1.000	0.800	0.800	
S9	1	2.800	0.800	2.240	
S10	1	1.340	0.600	0.804	
TOTAL					33.960

NON FAR AREA (STAIRCASE) (D)					
ITEM	NO.S	WIDTH (MTR.)	LENGTH (MTR.)	AREA(SQ.M) T1 = NO.X LENGTH X WIDTH	
N1	1	1.275	1.255	1.343	
N2	1	1.775	1.250	2.219	
N3	1	5.500	3.820	21.000	
N4	1	5.880	3.080	18.018	
N5	1	2.800	5.200	14.560	
TOTAL NON FAR AREA (D)					57.700

NON FAR AREA (DUCTION) (E)					
ITEM	NO.S	WIDTH (MTR.)	LENGTH (MTR.)	AREA(SQ.M) T1 = NO.X LENGTH X WIDTH	
L3	1	3.000	2.200	6.600	
NON FAR AREA (E)					6.600

TOTAL CORE FAR AREA CALCULATION = ADDITION(A) - SERVICE SHAFT (C) + NON FAR AREA (D)						
= 139.379					- 91.660	= 47.719 SQMT
TOTAL LOWER PENT HOUSE FLOOR FAR AREA CALCULATION = (TOTAL LOWER PENT HOUSE FLOOR UNIT 1 FAR AREA + TOTAL LOWER PENT HOUSE FLOOR UNIT 2 FAR AREA) + (TOTAL LOWER PENT HOUSE FLOOR CORE FAR AREA)						
= 244.788					+ 245.346	= 490.134 SQMT
+ 47.719					= 537.854 SQMT	

Sanctioned
Member Secretary
B.P.A.C.
S.T.P. (G)
Member
B.P.A.C.
C.T.P. (HR)
Chairman
B.P.A.C.
A.T.P.
A.T.P.

TO BE READ WITH THIS OFFICE MEMO DATED: 07/03/2019

Sanctioned
Member Secretary
B.P.A.C.
S.T.P. (G)
Member
B.P.A.C.
C.T.P. (HR)
Chairman
B.P.A.C.
A.T.P.
A.T.P.

Note:-

- BUILDING HAS AUTOMATIC SPRINKLER SYSTEM WHEREVER REQUIRED BY NBC.
- BUILDING WILL BE DESIGNED (STRUCTURES) AS PER RELEVANT IS CODES FOR EARTH QUAKE RESISTANCE.
- MECHANICAL VENTILATION WITH 100% POWER BACK-UP FOR SERVICE AREAS.

PROPOSED GROUP HOUSING COLONY MEASURING 5.875 ACRES UNDER TOD POLICY DATED 09.02.2016 (LICENSE NO. 50 OF 2019 DATED 07.03.2019) IN SECTOR -49, GURUGRAM BEING DEVELOPED BY ELAN ENCLAVE PRIVATE LIMITED UNDER COLLABORATION WITH V.A. AGRICULTURE PVT LTD

ARCHITECT'S SEAL & SIGNATURE	OWNER'S SEAL & SIGNATURE
<p>GTAN P. MATHUR B. Arch., M.S. A. I.I.A CA No. 80 5769</p>	<p>ELAN ENCLAVE PRIVATE LIMITED Authorized Signatory</p>
<p>Checked and found ok for Public Health (Internal) Service only subject to comments by In-chargeing officer. 07/03/2019</p>	
<p>JULY-2025. Scale: 1:75</p>	<p>Drawing No. A-12-06</p>
<p>Drawing Title:- TOWER - 2 PENTHOUSE LVL-1 LAYOUT (LEVEL -38TH FLOOR) & AREA DETAIL</p>	