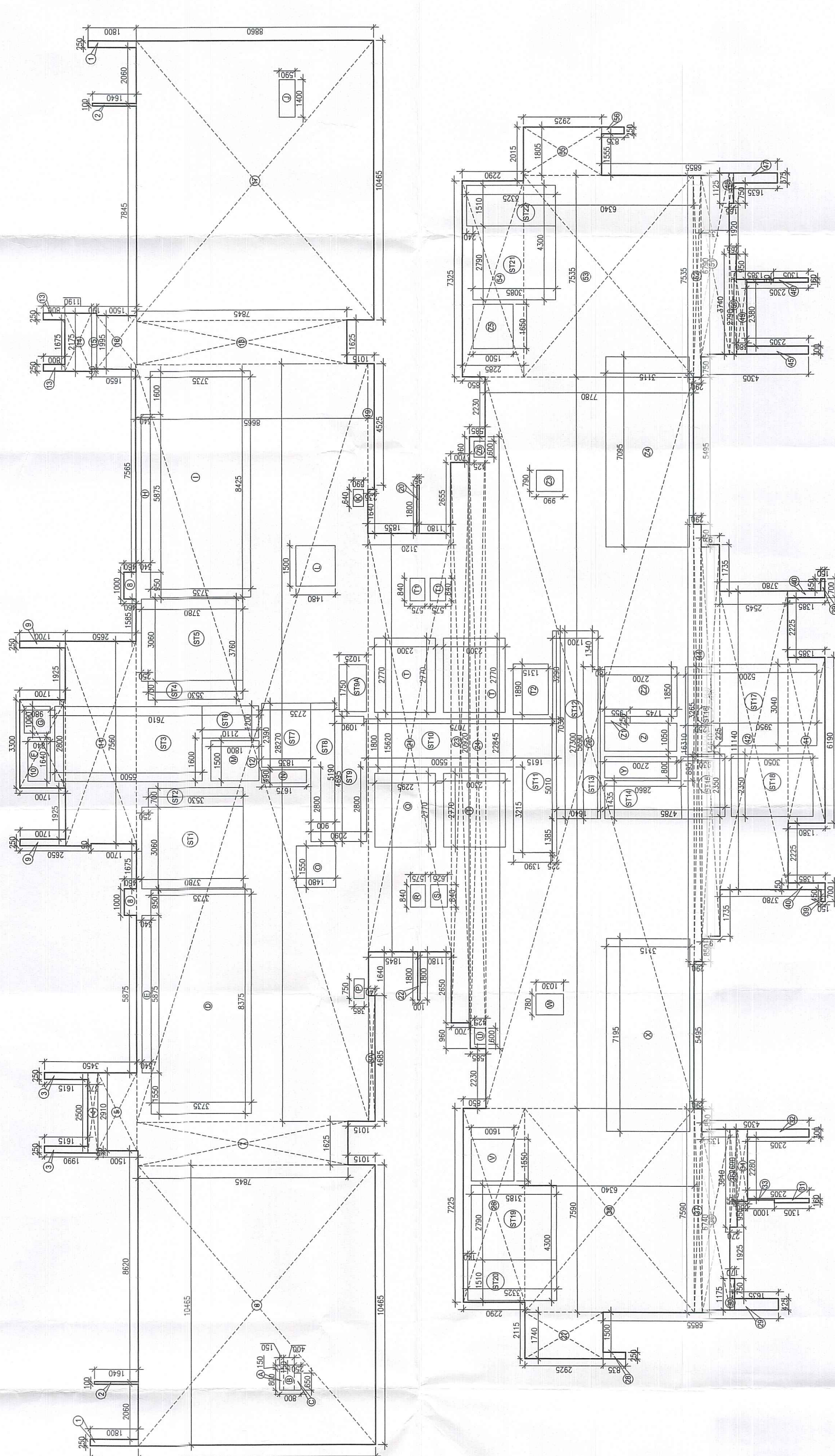


36TH PENTHOUSE UPPER  
 FLOOR PLAN  
 NO. OF UNIT-4  
 LVL. 4128.800  
 TOWER 4

| SYMBOL | DESCRIPTION                          |
|--------|--------------------------------------|
| (A)    | 1500 FIRE INTRINSIC PIPE DOWNER ZONE |
| (B)    | 1500 FIRE INTRINSIC PIPE DOWNER ZONE |
| (C)    | 1500 FIRE INTRINSIC PIPE DOWNER ZONE |
| (D)    | 1500 FIRE INTRINSIC PIPE DOWNER ZONE |
| (E)    | 1500 FIRE INTRINSIC PIPE DOWNER ZONE |
| (F)    | 1500 FIRE INTRINSIC PIPE DOWNER ZONE |
| (G)    | 1500 FIRE INTRINSIC PIPE DOWNER ZONE |
| (H)    | 1500 FIRE INTRINSIC PIPE DOWNER ZONE |
| (I)    | 1500 FIRE INTRINSIC PIPE DOWNER ZONE |
| (J)    | 1500 FIRE INTRINSIC PIPE DOWNER ZONE |
| (K)    | 1500 FIRE INTRINSIC PIPE DOWNER ZONE |
| (L)    | 1500 FIRE INTRINSIC PIPE DOWNER ZONE |
| (M)    | 1500 FIRE INTRINSIC PIPE DOWNER ZONE |
| (N)    | 1500 FIRE INTRINSIC PIPE DOWNER ZONE |
| (O)    | 1500 FIRE INTRINSIC PIPE DOWNER ZONE |
| (P)    | 1500 FIRE INTRINSIC PIPE DOWNER ZONE |
| (Q)    | 1500 FIRE INTRINSIC PIPE DOWNER ZONE |
| (R)    | 1500 FIRE INTRINSIC PIPE DOWNER ZONE |
| (S)    | 1500 FIRE INTRINSIC PIPE DOWNER ZONE |
| (T)    | 1500 FIRE INTRINSIC PIPE DOWNER ZONE |
| (U)    | 1500 FIRE INTRINSIC PIPE DOWNER ZONE |
| (V)    | 1500 FIRE INTRINSIC PIPE DOWNER ZONE |
| (W)    | 1500 FIRE INTRINSIC PIPE DOWNER ZONE |
| (X)    | 1500 FIRE INTRINSIC PIPE DOWNER ZONE |
| (Y)    | 1500 FIRE INTRINSIC PIPE DOWNER ZONE |
| (Z)    | 1500 FIRE INTRINSIC PIPE DOWNER ZONE |

| SYMBOL | DESCRIPTION                          |
|--------|--------------------------------------|
| (A)    | 1500 FIRE INTRINSIC PIPE DOWNER ZONE |
| (B)    | 1500 FIRE INTRINSIC PIPE DOWNER ZONE |
| (C)    | 1500 FIRE INTRINSIC PIPE DOWNER ZONE |
| (D)    | 1500 FIRE INTRINSIC PIPE DOWNER ZONE |
| (E)    | 1500 FIRE INTRINSIC PIPE DOWNER ZONE |
| (F)    | 1500 FIRE INTRINSIC PIPE DOWNER ZONE |
| (G)    | 1500 FIRE INTRINSIC PIPE DOWNER ZONE |
| (H)    | 1500 FIRE INTRINSIC PIPE DOWNER ZONE |
| (I)    | 1500 FIRE INTRINSIC PIPE DOWNER ZONE |
| (J)    | 1500 FIRE INTRINSIC PIPE DOWNER ZONE |
| (K)    | 1500 FIRE INTRINSIC PIPE DOWNER ZONE |
| (L)    | 1500 FIRE INTRINSIC PIPE DOWNER ZONE |
| (M)    | 1500 FIRE INTRINSIC PIPE DOWNER ZONE |
| (N)    | 1500 FIRE INTRINSIC PIPE DOWNER ZONE |
| (O)    | 1500 FIRE INTRINSIC PIPE DOWNER ZONE |
| (P)    | 1500 FIRE INTRINSIC PIPE DOWNER ZONE |
| (Q)    | 1500 FIRE INTRINSIC PIPE DOWNER ZONE |
| (R)    | 1500 FIRE INTRINSIC PIPE DOWNER ZONE |
| (S)    | 1500 FIRE INTRINSIC PIPE DOWNER ZONE |
| (T)    | 1500 FIRE INTRINSIC PIPE DOWNER ZONE |
| (U)    | 1500 FIRE INTRINSIC PIPE DOWNER ZONE |
| (V)    | 1500 FIRE INTRINSIC PIPE DOWNER ZONE |
| (W)    | 1500 FIRE INTRINSIC PIPE DOWNER ZONE |
| (X)    | 1500 FIRE INTRINSIC PIPE DOWNER ZONE |
| (Y)    | 1500 FIRE INTRINSIC PIPE DOWNER ZONE |
| (Z)    | 1500 FIRE INTRINSIC PIPE DOWNER ZONE |



AREA CALCULATION OF  
 UPPER PENTHOUSE FLOOR PLAN

| DOOR WINDOW SCHEDULE (DOWNER) |      |       |        |
|-------------------------------|------|-------|--------|
| S. NO.                        | TAGS | WIDTH | HEIGHT |
| 1                             | D1   | 1500  | 2400   |
| 2                             | D2   | 1500  | 2400   |
| 3                             | D3   | 1500  | 2400   |
| 4                             | D4   | 1500  | 2400   |
| 5                             | D5   | 1500  | 2400   |
| 6                             | D6   | 1500  | 2400   |
| 7                             | D7   | 1500  | 2400   |
| 8                             | D8   | 1500  | 2400   |
| 9                             | D9   | 1500  | 2400   |
| 10                            | D10  | 1500  | 2400   |
| 11                            | D11  | 1500  | 2400   |
| 12                            | D12  | 1500  | 2400   |
| 13                            | D13  | 1500  | 2400   |
| 14                            | D14  | 1500  | 2400   |
| 15                            | D15  | 1500  | 2400   |
| 16                            | D16  | 1500  | 2400   |
| 17                            | D17  | 1500  | 2400   |
| 18                            | D18  | 1500  | 2400   |
| 19                            | D19  | 1500  | 2400   |
| 20                            | D20  | 1500  | 2400   |
| 21                            | D21  | 1500  | 2400   |
| 22                            | D22  | 1500  | 2400   |
| 23                            | D23  | 1500  | 2400   |
| 24                            | D24  | 1500  | 2400   |
| 25                            | D25  | 1500  | 2400   |
| 26                            | D26  | 1500  | 2400   |
| 27                            | D27  | 1500  | 2400   |
| 28                            | D28  | 1500  | 2400   |
| 29                            | D29  | 1500  | 2400   |
| 30                            | D30  | 1500  | 2400   |
| 31                            | D31  | 1500  | 2400   |
| 32                            | D32  | 1500  | 2400   |
| 33                            | D33  | 1500  | 2400   |
| 34                            | D34  | 1500  | 2400   |
| 35                            | D35  | 1500  | 2400   |
| 36                            | D36  | 1500  | 2400   |
| 37                            | D37  | 1500  | 2400   |
| 38                            | D38  | 1500  | 2400   |
| 39                            | D39  | 1500  | 2400   |
| 40                            | D40  | 1500  | 2400   |
| 41                            | D41  | 1500  | 2400   |
| 42                            | D42  | 1500  | 2400   |
| 43                            | D43  | 1500  | 2400   |
| 44                            | D44  | 1500  | 2400   |
| 45                            | D45  | 1500  | 2400   |
| 46                            | D46  | 1500  | 2400   |
| 47                            | D47  | 1500  | 2400   |
| 48                            | D48  | 1500  | 2400   |
| 49                            | D49  | 1500  | 2400   |
| 50                            | D50  | 1500  | 2400   |
| 51                            | D51  | 1500  | 2400   |
| 52                            | D52  | 1500  | 2400   |
| 53                            | D53  | 1500  | 2400   |
| 54                            | D54  | 1500  | 2400   |
| 55                            | D55  | 1500  | 2400   |
| 56                            | D56  | 1500  | 2400   |
| 57                            | D57  | 1500  | 2400   |
| 58                            | D58  | 1500  | 2400   |
| 59                            | D59  | 1500  | 2400   |
| 60                            | D60  | 1500  | 2400   |
| 61                            | D61  | 1500  | 2400   |
| 62                            | D62  | 1500  | 2400   |
| 63                            | D63  | 1500  | 2400   |
| 64                            | D64  | 1500  | 2400   |
| 65                            | D65  | 1500  | 2400   |
| 66                            | D66  | 1500  | 2400   |
| 67                            | D67  | 1500  | 2400   |
| 68                            | D68  | 1500  | 2400   |
| 69                            | D69  | 1500  | 2400   |
| 70                            | D70  | 1500  | 2400   |
| 71                            | D71  | 1500  | 2400   |
| 72                            | D72  | 1500  | 2400   |
| 73                            | D73  | 1500  | 2400   |
| 74                            | D74  | 1500  | 2400   |
| 75                            | D75  | 1500  | 2400   |
| 76                            | D76  | 1500  | 2400   |
| 77                            | D77  | 1500  | 2400   |
| 78                            | D78  | 1500  | 2400   |
| 79                            | D79  | 1500  | 2400   |
| 80                            | D80  | 1500  | 2400   |
| 81                            | D81  | 1500  | 2400   |
| 82                            | D82  | 1500  | 2400   |
| 83                            | D83  | 1500  | 2400   |
| 84                            | D84  | 1500  | 2400   |
| 85                            | D85  | 1500  | 2400   |
| 86                            | D86  | 1500  | 2400   |
| 87                            | D87  | 1500  | 2400   |
| 88                            | D88  | 1500  | 2400   |
| 89                            | D89  | 1500  | 2400   |
| 90                            | D90  | 1500  | 2400   |
| 91                            | D91  | 1500  | 2400   |
| 92                            | D92  | 1500  | 2400   |
| 93                            | D93  | 1500  | 2400   |
| 94                            | D94  | 1500  | 2400   |
| 95                            | D95  | 1500  | 2400   |
| 96                            | D96  | 1500  | 2400   |
| 97                            | D97  | 1500  | 2400   |
| 98                            | D98  | 1500  | 2400   |
| 99                            | D99  | 1500  | 2400   |
| 100                           | D100 | 1500  | 2400   |

| DOOR WINDOW SCHEDULE (UPPER) |      |       |        |
|------------------------------|------|-------|--------|
| S. NO.                       | TAGS | WIDTH | HEIGHT |
| 1                            | U1   | 1500  | 2400   |
| 2                            | U2   | 1500  | 2400   |
| 3                            | U3   | 1500  | 2400   |
| 4                            | U4   | 1500  | 2400   |
| 5                            | U5   | 1500  | 2400   |
| 6                            | U6   | 1500  | 2400   |
| 7                            | U7   | 1500  | 2400   |
| 8                            | U8   | 1500  | 2400   |
| 9                            | U9   | 1500  | 2400   |
| 10                           | U10  | 1500  | 2400   |
| 11                           | U11  | 1500  | 2400   |
| 12                           | U12  | 1500  | 2400   |
| 13                           | U13  | 1500  | 2400   |
| 14                           | U14  | 1500  | 2400   |
| 15                           | U15  | 1500  | 2400   |
| 16                           | U16  | 1500  | 2400   |
| 17                           | U17  | 1500  | 2400   |
| 18                           | U18  | 1500  | 2400   |
| 19                           | U19  | 1500  | 2400   |
| 20                           | U20  | 1500  | 2400   |
| 21                           | U21  | 1500  | 2400   |
| 22                           | U22  | 1500  | 2400   |
| 23                           | U23  | 1500  | 2400   |
| 24                           | U24  | 1500  | 2400   |
| 25                           | U25  | 1500  | 2400   |
| 26                           | U26  | 1500  | 2400   |
| 27                           | U27  | 1500  | 2400   |
| 28                           | U28  | 1500  | 2400   |
| 29                           | U29  | 1500  | 2400   |
| 30                           | U30  | 1500  | 2400   |
| 31                           | U31  | 1500  | 2400   |
| 32                           | U32  | 1500  | 2400   |
| 33                           | U33  | 1500  | 2400   |
| 34                           | U34  | 1500  | 2400   |
| 35                           | U35  | 1500  | 2400   |
| 36                           | U36  | 1500  | 2400   |
| 37                           | U37  | 1500  | 2400   |
| 38                           | U38  | 1500  | 2400   |
| 39                           | U39  | 1500  | 2400   |
| 40                           | U40  | 1500  | 2400   |
| 41                           | U41  | 1500  | 2400   |
| 42                           | U42  | 1500  | 2400   |
| 43                           | U43  | 1500  | 2400   |
| 44                           | U44  | 1500  | 2400   |
| 45                           | U45  | 1500  | 2400   |
| 46                           | U46  | 1500  | 2400   |
| 47                           | U47  | 1500  | 2400   |
| 48                           | U48  | 1500  | 2400   |
| 49                           | U49  | 1500  | 2400   |
| 50                           | U50  | 1500  | 2400   |
| 51                           | U51  | 1500  | 2400   |
| 52                           | U52  | 1500  | 2400   |
| 53                           | U53  | 1500  | 2400   |
| 54                           | U54  | 1500  | 2400   |
| 55                           | U55  | 1500  | 2400   |
| 56                           | U56  | 1500  | 2400   |
| 57                           | U57  | 1500  | 2400   |
| 58                           | U58  | 1500  | 2400   |
| 59                           | U59  | 1500  | 2400   |
| 60                           | U60  | 1500  | 2400   |
| 61                           | U61  | 1500  | 2400   |
| 62                           | U62  | 1500  | 2400   |
| 63                           | U63  | 1500  | 2400   |
| 64                           | U64  | 1500  | 2400   |
| 65                           | U65  | 1500  | 2400   |
| 66                           | U66  | 1500  | 2400   |
| 67                           | U67  | 1500  | 2400   |
| 68                           | U68  | 1500  | 2400   |
| 69                           | U69  | 1500  | 2400   |
| 70                           | U70  | 1500  | 2400   |
| 71                           | U71  | 1500  | 2400   |
| 72                           | U72  | 1500  | 2400   |
| 73                           | U73  | 1500  | 2400   |
| 74                           | U74  | 1500  | 2400   |
| 75                           | U75  | 1500  | 2400   |
| 76                           | U76  | 1500  | 2400   |
| 77                           | U77  | 1500  | 2400   |
| 78                           | U78  | 1500  | 2400   |
| 79                           | U79  | 1500  | 2400   |
| 80                           | U80  | 1500  | 2400   |
| 81                           | U81  | 1500  | 2400   |
| 82                           | U82  | 1500  | 2400   |
| 83                           | U83  | 1500  | 2400   |
| 84                           | U84  | 1500  | 2400   |
| 85                           | U85  | 1500  | 2400   |
| 86                           | U86  | 1500  | 2400   |
| 87                           | U87  | 1500  | 2400   |
| 88                           | U88  | 1500  | 2400   |
| 89                           | U89  | 1500  | 2400   |
| 90                           | U90  | 1500  | 2400   |
| 91                           | U91  | 1500  | 2400   |
| 92                           | U92  | 1500  | 2400   |
| 93                           | U93  | 1500  | 2400   |
| 94                           | U94  | 1500  | 2400   |
| 95                           | U95  | 1500  | 2400   |
| 96                           | U96  | 1500  | 2400   |
| 97                           | U97  | 1500  | 2400   |
| 98                           | U98  | 1500  | 2400   |
| 99                           | U99  | 1500  | 2400   |
| 100                          | U100 | 1500  | 2400   |

**Note :-**  
 1. BUILDING HAS AUTOMATIC SPRINKLER SYSTEM WHEREVER REQUIRED BY N.C.  
 2. BUILDING WILL BE DESIGNED (STRUCTURES) TO RESIST EARTH QUAKE RESISTANCE.  
 3. ALL BUILDING 100% POWER BACKUP.

**PROJECT :-**  
 PROPOSED BUILDING PLAN OF G.H. SITE NO. 24 IN SECTOR-53 GURUGRAM OF AREA MEASURING 7.413 ACRES BEING DEVELOPED BY MS GODREI PROPERTIES LTD.

**ASSOCIATE ARCHITECTS**  
**GG ASSOCIATES**  
 134, First floor, Vignol Business Park, Sohna Road, Sector 53, Gurugram (Haryana) (PH: 9960797494, 9871004573)

**OWNERS SEAL & SIGNATURE**  
 Per Godrei Properties Ltd.  
 Authorised Signatory

**ARCHITECT'S SEAL & SIGNATURE**  
 Per Godrei Properties Ltd.  
 Authorised Signatory

**Scale :- 1:100**  
 Drawing No. -  
 FEB-2026  
 36TH PENTHOUSE UPPER FLOOR PLAN & AREA CALCULATION  
 14-05