



Phase I: XX of XXXX dated XX.XX.XXXX
www.haryanarera.gov.in

THE IDEA OF CHILDHOOD MADE REAL

You've seen the philosophy.
You've felt the promise.

aaroham

Curated Kid Centric Residences



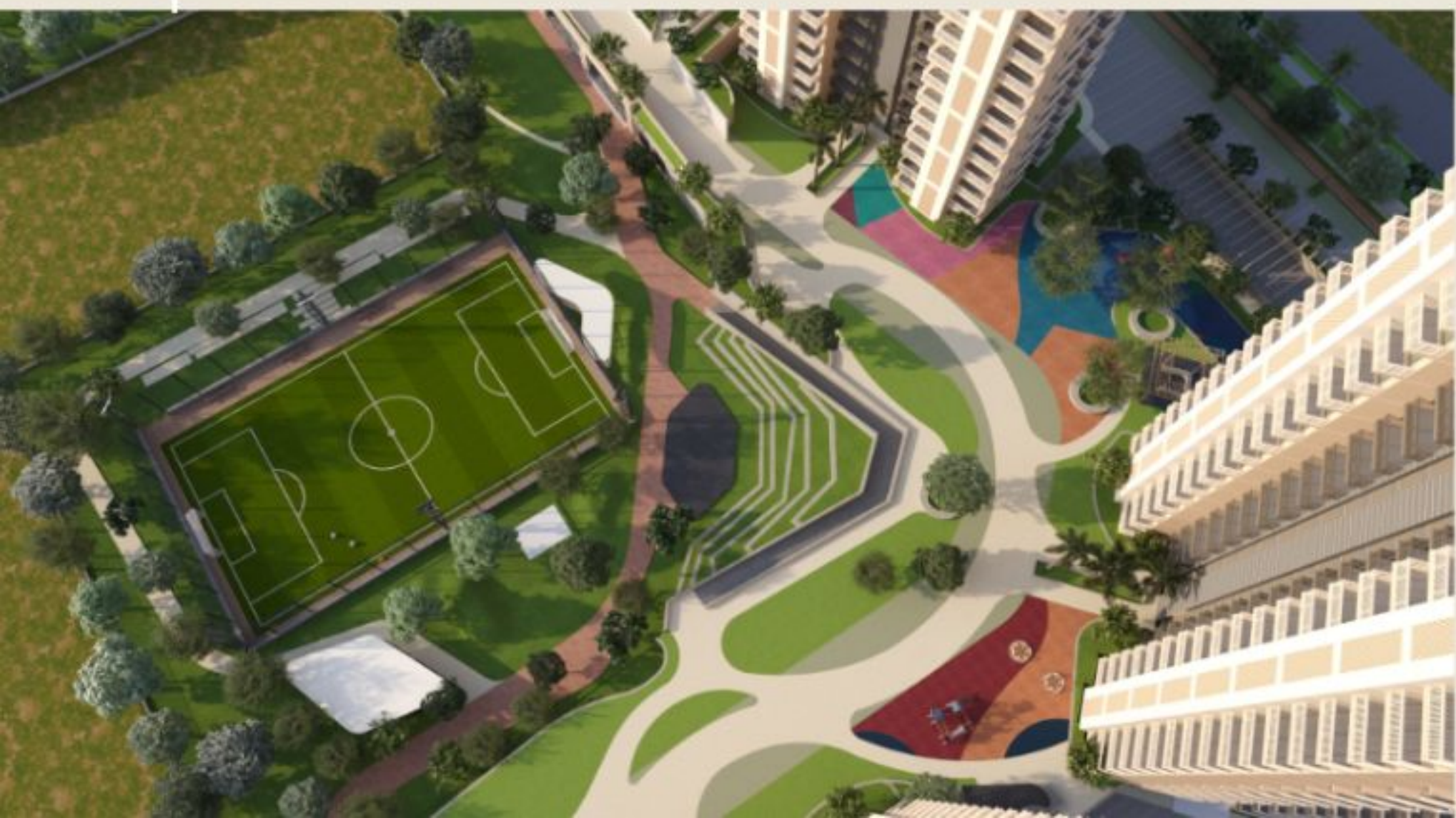


Now discover how every detail at Aaroham brings the vision of Kid Centric Homes alive; not in dreams, but in square feet, acres, and amenities.

“

BECAUSE CHILDHOOD DESERVES MORE THAN PROMISES

- 43,708 sq m or 10.8 acres of thoughtfully planned living
- 6 towers with 542 residences and 8 commercial units
- At the center, two landmarks; a 2,434.77 sq m clubhouse and a 559.451 sq m Learning Hub.
- Experience exclusive benefits like traffic-free zones, safe green spaces, and Playtopia.



Project Highlights:



Low-density Community
With Wide, Open Vistas



Smartly Planned
Vehicular Movement for
Safety



Playtopia With
Multiple Amenities



3,564 sq m Dedicated
Sports Area



Landscaped Gardens



WHERE UNSTEADY STEPS LEAD TO UNSTOPPABLE JOURNEYS

Every childhood deserves the space to fall, rise, and play again. Aaroham delivers arenas built for resilience and dreams.

Sports Amenities:



Football Field



Tennis Courts



Basketball Court



Pickleball



Box Cricket Arena



Skating Rink



Adventure Zone

Because the spirit of sports deserve facilities that are as serious as their dreams.



THE HEART OF KID CENTRIC HOMES BEATING AT 599.45 SQM

The Learning Hub is the soul of Aaroham, a vibrant space where books, arts, science, and creativity come together. More than a facility, it is a world designed to nurture curiosity, and spark imagination in every child.



Learning Hub Amenities:



Reading Hub



Art & Craft Room



Music Room



Dance Room



Workshop Room



Study Room

- A library full of books to nurture curiosity and knowledge
- A creative space for hands-on exploration and imagination
- Dedicated studios to develop rhythm, expression and performance skills
- Innovation-driven space for experiments, STEM activities and discovery
- Quiet zones for focused learning, tuition and academic support



“

NOT JUST ACTIVITIES A CURRICULUM FOR LIFE

Every week, every month, every year, Aaroham delivers a calendar of growth. Curated by Hearth Education Advisors and guided by a full-time Learning Hub Coordinator.



Programme Highlights:

- A balanced mix of STEM + arts + performance + sports
- Dance, theatre, music, art & craft, painting and public speaking
- Weekly and monthly activity calendars
- Events, competitions and excursions
- Tie-ups with professional coaches and academies



2,434.77 SQM OF INDULGENCE FOR KIDS AND PARENTS ALIKE

Club House Amenities:

Because parenting is easier when every family member has the space to recharge.

- Infinity Swimming Pool with Kids' Pool
- Squash Courts
- Multi-purpose Hall
- Media Lounge
- Indoor Gym & Wellness Centre
- Dedicated Café and Social Zones
- Badminton Courts





THE RAREST WONDER IN GURUGRAM OPEN SPACE

Landscape Highlights:

More than two-thirds of Aaroham is green, safe, and open. Because freedom isn't built in square feet, but in the spaces between them.

- Miyawaki Forests
- Central Landscaped Greens
- Walking & Cycling Trails
- Children's Adventure Park
- Amphitheatre
- Tree Court & Shaded Sit-outs
- Meditation & Yoga Lawns
- Community Garden & Grow Pads





EVERY HOME DESIGNED WITH CARE YOU CAN MEASURE

Comfort isn't an add-on. It's built into every square foot.

Apartment Highlights:

- Spacious Layouts with Privacy-focused Design
- Attached Balconies with Every Room
- Cross-ventilation and Natural Light
- Hepa-filtered Fresh Air
- Hot & Cold Inverter ACs in All Rooms
- Modular Kitchens with Branded Fittings
- Concealed Services for Clean Interiors



“

SAFE BY DESIGN SECURE BY INTENT

Because peace of mind is the first promise of a home.

- Traffic-free master plan
- CCTV - secured community
- Gated entrances with controlled access
- Fire safety systems compliant with NBC norms

Safety Highlights:





CONNECTED TO EVERYTHING SURROUNDED BY THE CALM

Sector 80, Gurugram offers the rare balance of convenience and tranquillity.

- 5 minutes to Karma Lakelands
- 10 minutes to premium malls & entertainment hubs
- 15 minutes to top schools
- 30 minutes to Medanta & Artemis hospitals
- Excellent connectivity via NH-48 & Dwarka Expressway

Proximity Highlights:





3bhk +3 toilet (Type-1)

Carpet Area
98.23 sq m
1057.35 sq ft

Balcony Area
26.46 sq m
284.82 sq ft



3bhk +3 toilet-(Type-2)

Carpet Area
113.62 sq m
1223.01 sq ft

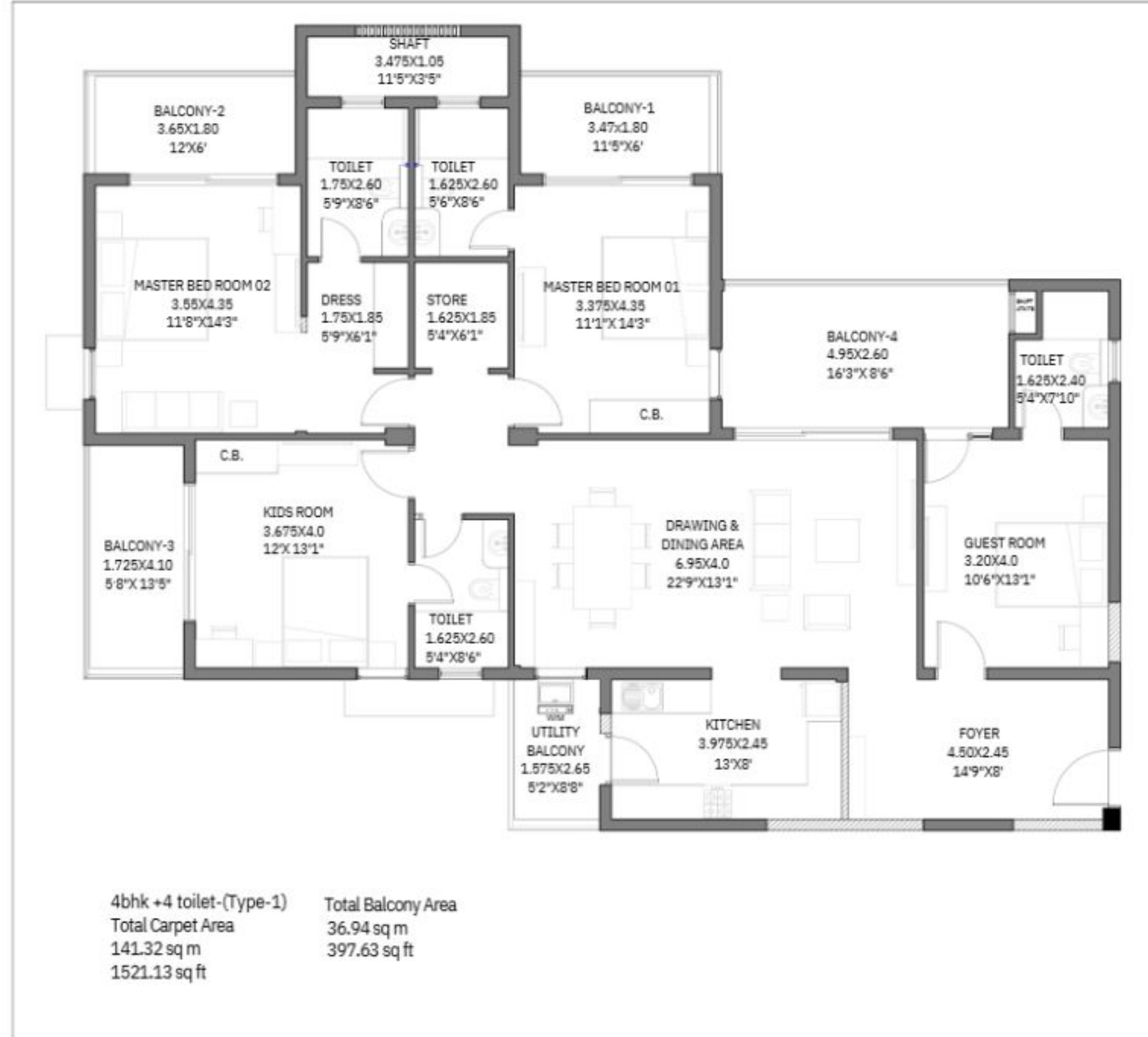
Balcony Area
32.16 sq m
346.17 sq ft

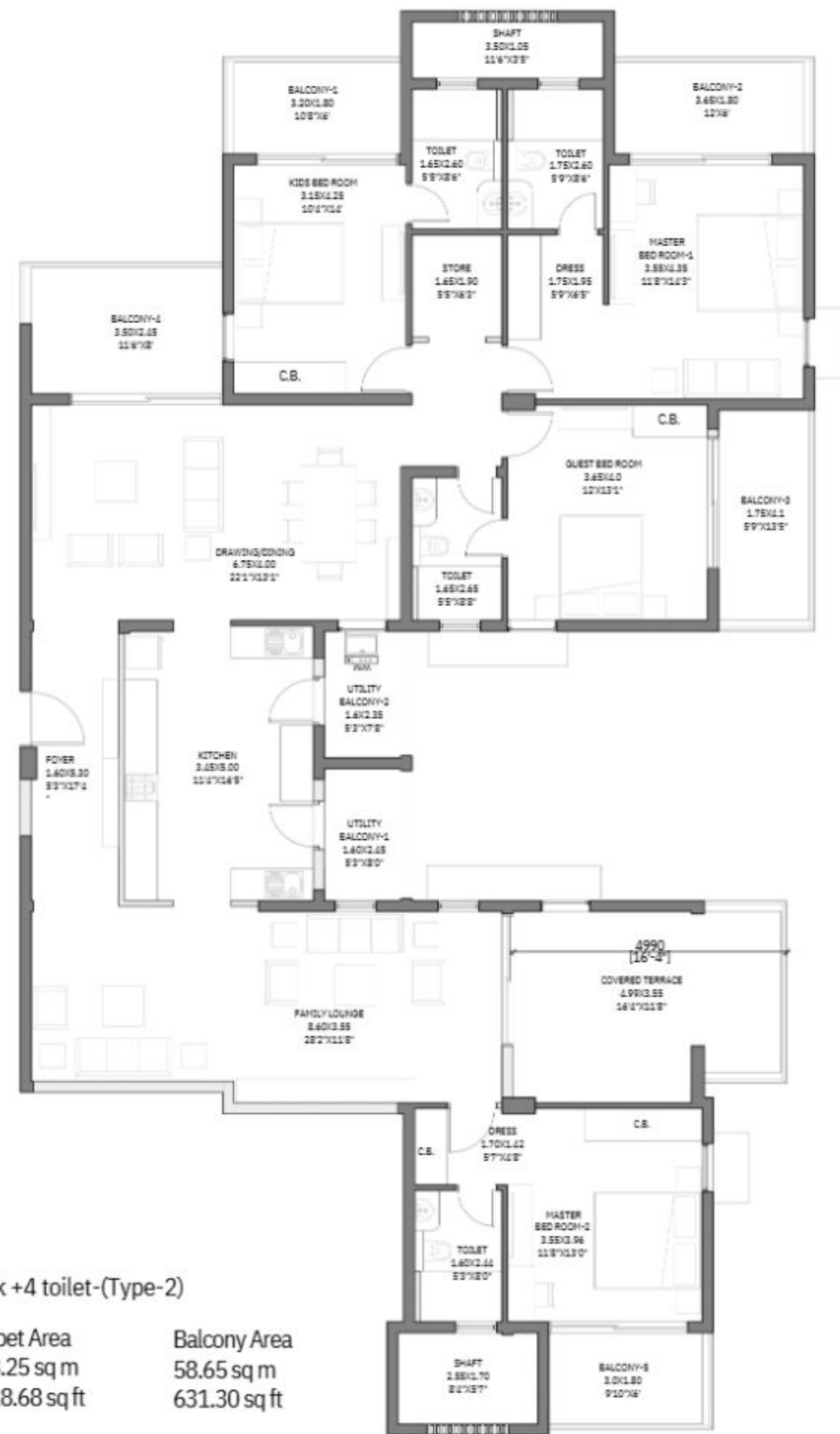


3bhk +3 toilet-(Type-3)

Total Carpet Area
116.99 sq m
1259.25 sq ft

Total Balcony Area
30.70 sq m
330.45 sq ft

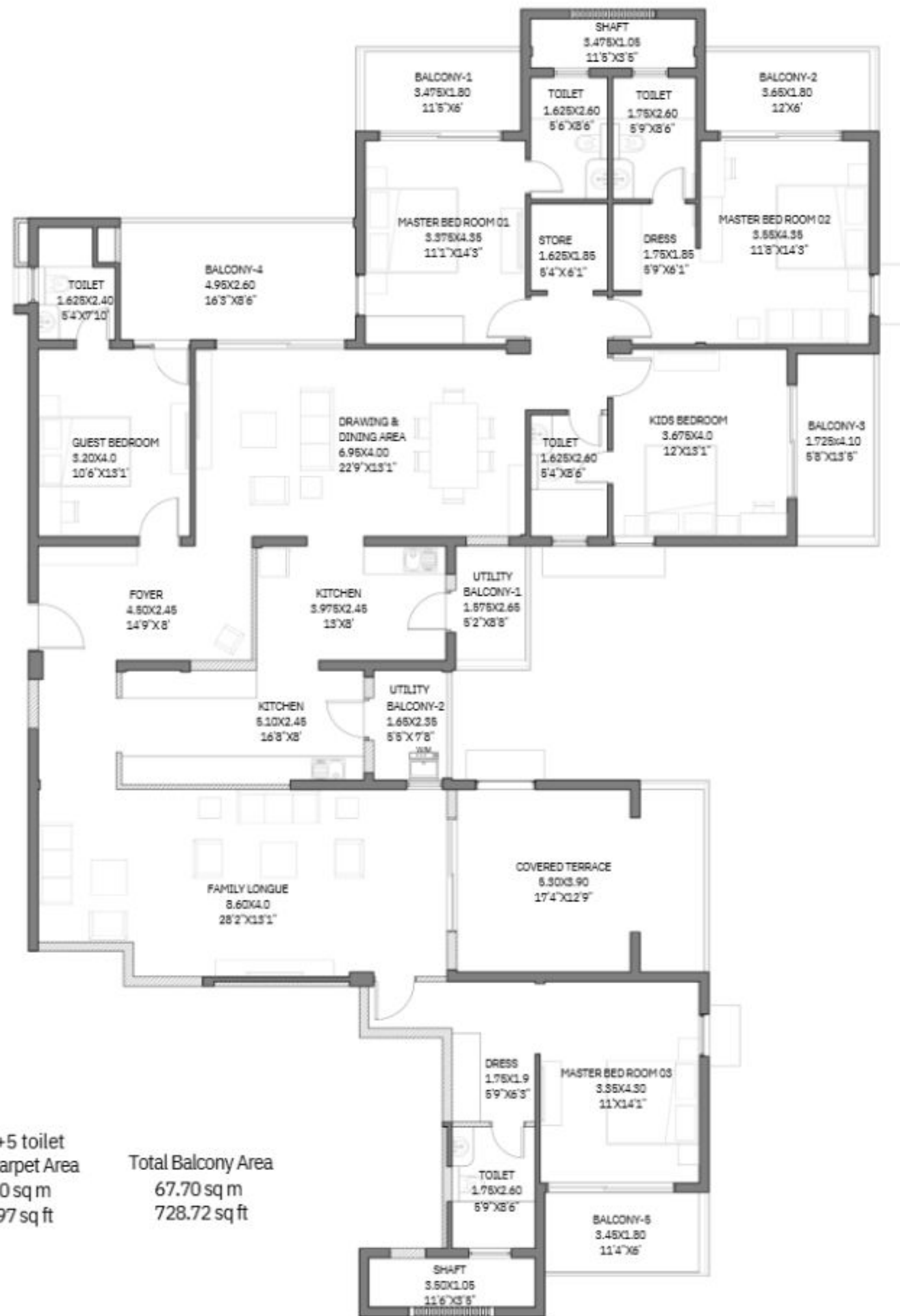




4bhk +4 toilet-(Type-2)

Carpet Area
178.25 sq m
1918.68 sq ft

Balcony Area
58.65 sq m
631.30 sq ft



5bhk +5 toilet
 Total Carpet Area
 219.80 sq m
 2365.97 sq ft

Total Balcony Area
 67.70 sq m
 728.72 sq ft

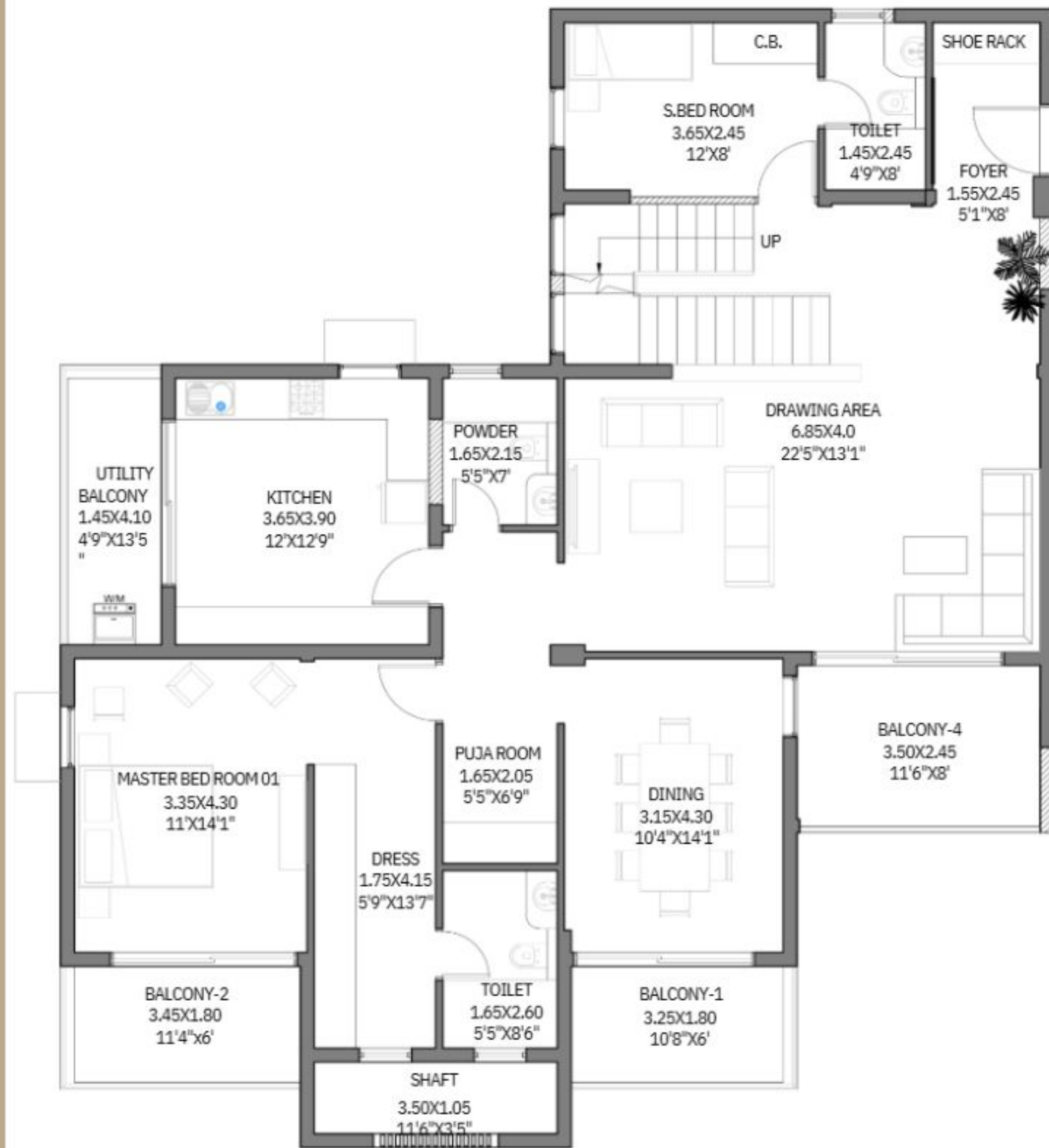


Duplex Upper Level (First Floor)

Duplex Type-1 (4bhk-4T+Powder+Servant Room+1Toilet)
Lower Level (Ground Floor)

Total Carpet Area
195.02 sq m
2099.20 sq ft

Total Balcony Area
50.80 sq m
546.81 sq ft



Duplex Type-2(4bhk-4T+Powder+Servant Room+1Toilet)
Lower Level (Ground Floor)

Total Carpet Area
242.73 sq m
2612.79 sq ft

Total Balcony Area
53.16 sq m
572.21 sq ft



Duplex Upper Level (First Floor)

SPECIFICATIONS PHASE -1							
SPACE	FLOORING	WALLS	CHAUKHATS	DOOR SHUTTERS	WINDOWS	FIXTURES/FITTINGS	
LIVING/ DINING/ LOBBY	Vitrified tiles with Epoxy Grout	Acrylic emulsion of pleasing shade of a reputed brand as per architect's suggestions	Main door : Folded steel section/ Wooden Finish	Main door : 1 hour Fire rated MS/Door shutter with handle & lock system with video door phone	Powder-coated/ anodized aluminium or UPVC windows with 6/8mm thick high performance glass	Modular electrical switches with sockets & fan regulators	
BEDROOM	Master Bedroom: Wooden vitrified texture tiles	Acrylic emulsion of pleasing shade of a reputed brand as per architect's suggestions	Wooden Finish door frame in LVL / Metal	35mm thk door /flush door with both side laminate -1 mm ,with mortise lock & lever handle/coin turn	Powder-coated/ anodized aluminium or UPVC windows with 6/8mm thick high performance glass	Modular electrical switches with sockets & fan regulators	
	Other Bedrooms: Wooden vitrified texture tiles						
KITCHEN	Vitrified tiles with Epoxy Grout	600mm high ceramic tiles dado above platform & acrylic emulsion of a pleasing shade of a reputed brand as per architect's suggestions	N/A	N/A	Powder-coated/ anodized aluminium or UPVC windows with 5mm thick high performance glass	Kitchen platform in Quartz/granite stone/vitrified tile; slab with stainless steel sink with drain board, kitchen hobb,Under counter RO, wooden cabinet, chimney, dish washer &Oven to be provided.	
BATHROOM	Master Bathroom: Combination of vitrified Wooden texture tiles and Ceramic tiles on floor & Dado.	Ceramic tiles upto beam bottom	Wooden Finish door frame in LVL / Metal	35mm thk door /flush door with both side laminate -1 mm ,with mortise lock & pull handle	Powder-coated/ anodized aluminium or UPVC windows with 5mm thick toughened glass	Bowl type over the counter wash basin of ROCA/Jaquar or equivalent; glass curtain in master toilet and guest toilet; Counter top wash basin in master toilet with vanity counter; wall mixer & basin mixer of Jaquar/Grohe or equivalent; other CP fittings of jaquar /Continental/Prayag or equivalent; mirror, towel rack & health faucet	
	Other Bathroom: Ceramic tiles on floor/DADO						
BALCONY	Ceramic tiles	Acrylic emulsion of pleasing shade of a reputed brand as per architect's suggestions	N/A	N/A	N/A	N/A	

THE VISION WAS INSPIRING CHILDHOOD
& THE REALITY IS

aaroham

Curated Kid Centric Residences

Here, every promise of Kid Centric Homes has been made real, in football fields and libraries, in playtopia and balconies, in curated program and crafted homes.

This is not just where families live. It's where childhood thrives, and life begins.



Site Map

- 4BHK + 4T (IRIS)
- LAVENDER (3BHK + 3T) LARGE
- LAVENDER (3 BHK + 3T)
- LAVENDER (3 BHK + 3T) SMALL
- PHASE 1
- FUTURE DEVELOPMENT
- FUTURE DEVELOPMENT



Common facilities for the project to be developed with : Phase I

- | | |
|---------------------------------|--------------------------|
| 1. ENTRY/ EXIT | 19. CLUB LAWN |
| 2. GUARD HOUSE | 20. FEATURE WALL |
| 3. WATER FEATURE WITH SCULPTURE | 23. MOUNDS |
| 4. CLUB HOUSE DROP-OFF | 24. MIYAWAKI |
| 5. SWIMMING POOL | 29. SEATING PAVILLION |
| 6. SURFACE PARKING | 30. PRIVATE GARDEN |
| 7. ENTRY/EXIT TO BASEMENT | 31. PLANTER WITH SEATING |
| 11. SITOUT CORNERS | 33. WALKING/JOGGING LOOP |
| 13. TOWER DROP OFF | 34. DENSE PLANTING |
| 17. AMPHITHEATRE AND STAGE | |
| 18. FOOTBALL COURT | |

To be developed with future phases

- | | | |
|------------------------------|-----------------------|---------------------------|
| 6. SURFACE PARKING | 22. PET PARK | 30. PRIVATE GARDEN |
| 8. SKATING RING | 23. MOUNDS | 31. PLANTER WITH SEATING |
| 9. BOX CRICKET | 24. MIYAWAKI | 32. SANDPIT |
| 10. ADVENTURE FOREST | 25. NODE-1 | 33. WALKING/ JOGGING LOOP |
| 11. SITOUT CORNERS | 25A. NODE-2 | 34. DENSE PLANTING |
| 12. YOGA LAWN AND MEDITATION | 26. DOOR STEP-1 | 35. COMMERCIAL ENTRY |
| 13. TOWER DROP OFF | 26A. DOOR STEP-2 | 36. PLAY ZONE |
| 14. BASKET BALL COURT | 27. SOCIAL STEPS | |
| 16. FITNESS COURT | 28. PODIUM LAWN | |
| 21. LAWN TENNIS COURT | 29. SEATING PAVILLION | |

Disclaimer:
(i) _____

Important to know: The site map is for representational purpose only.

