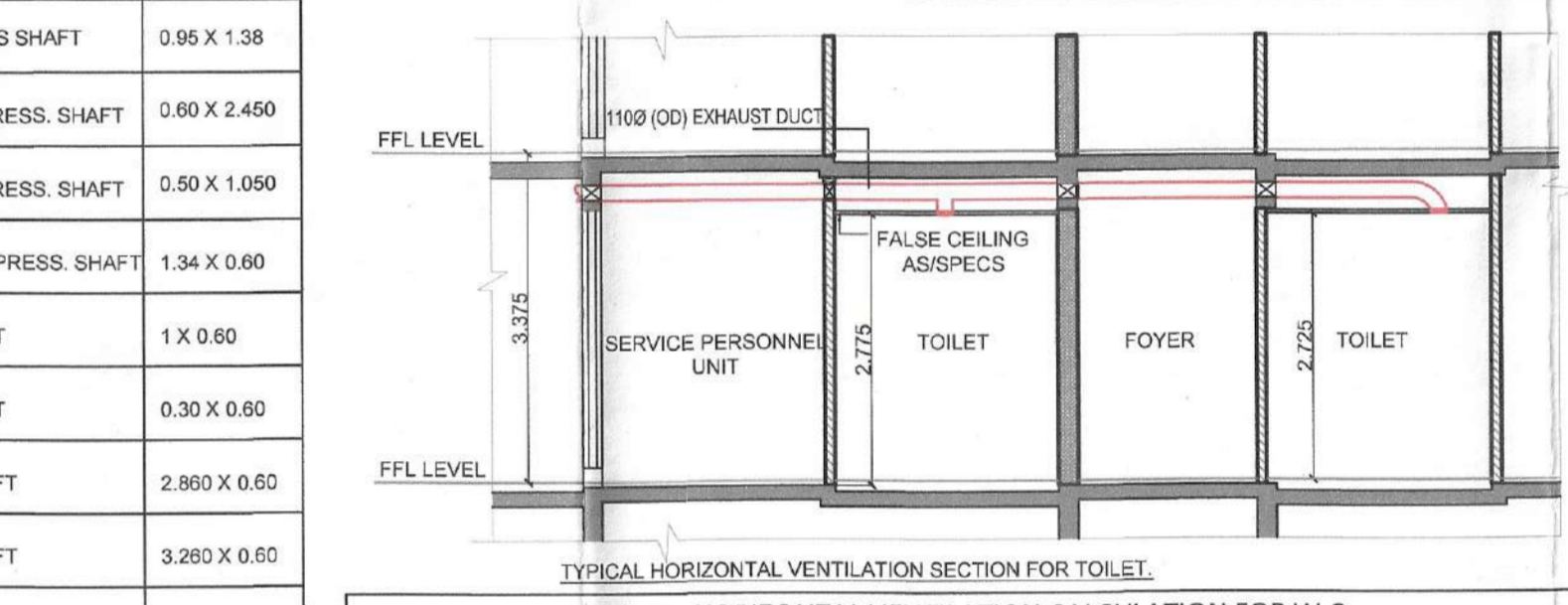
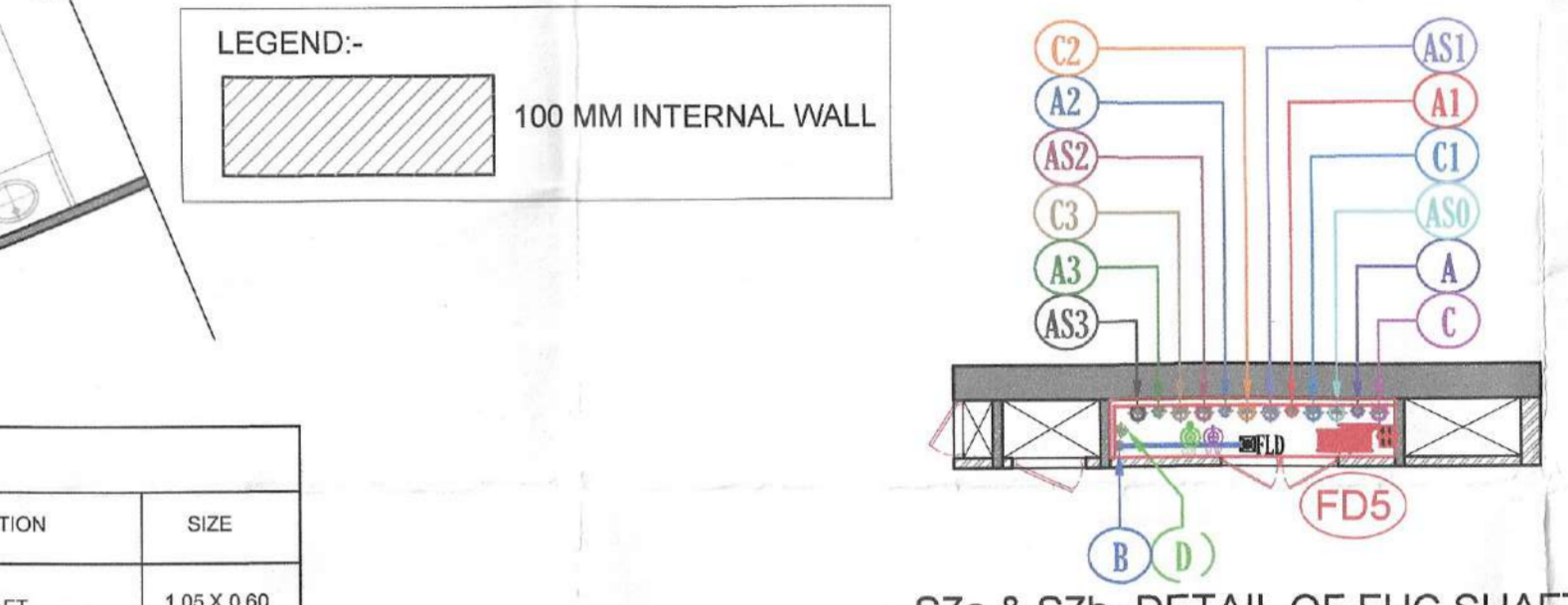


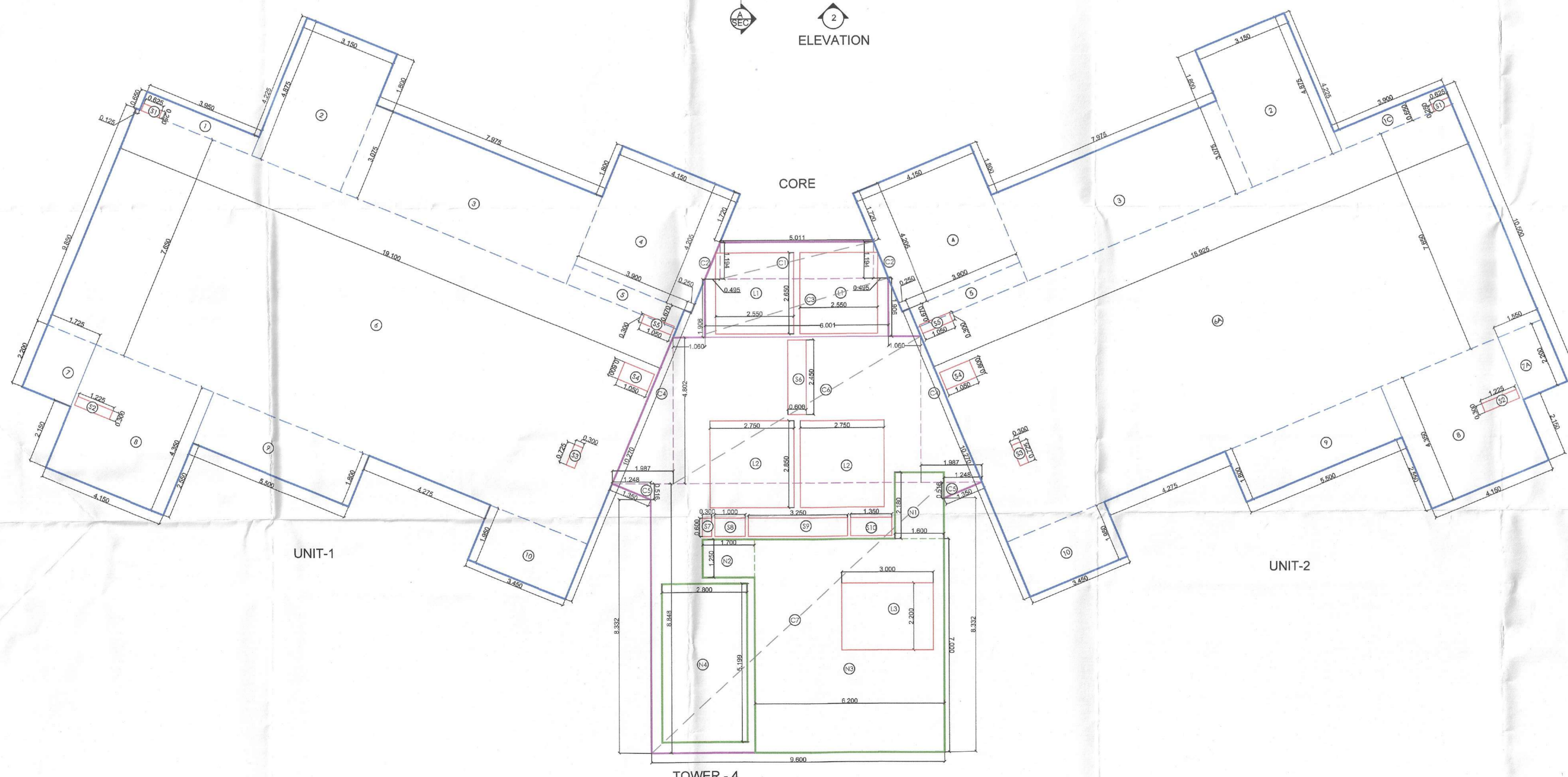
LEGEND PLUMBING PIPE	
S.N.	DESCRIPTION
1.	100 ØD SIZE PIPE
2.	100 ØD WASTE PIPE
3.	100 ØD KITCHEN WASTE PIPE
4.	100 ØD WASHING MACHINE WASTE PIPE
5.	75 ØD CUMMULATIVE WASTE PIPE
6.	75 ØD ØPVC RISE PIPE
7.	100 ØD ØPVC RISE WATER PIPE
8.	100 ØD ØPVC BALCONY DRAIN PIPE
9.	100 ØD ØPVC RISE BALCONY DRAIN PIPE
10.	100 ØD ØPVC BALCONY DRAIN PIPE
11.	100 ØD ØPVC BALCONY DRAIN PIPE
12.	100 ØD ØPVC BALCONY DRAIN PIPE
13.	100 ØD ØPVC BALCONY DRAIN PIPE
14.	100 ØD ØPVC BALCONY DRAIN PIPE
15.	100 ØD ØPVC BALCONY DRAIN PIPE
16.	100 ØD ØPVC BALCONY DRAIN PIPE
17.	100 ØD ØPVC BALCONY DRAIN PIPE
18.	100 ØD ØPVC BALCONY DRAIN PIPE
19.	100 ØD ØPVC BALCONY DRAIN PIPE
20.	100 ØD ØPVC BALCONY DRAIN PIPE
21.	100 ØD ØPVC BALCONY DRAIN PIPE
22.	100 ØD ØPVC BALCONY DRAIN PIPE
23.	100 ØD ØPVC BALCONY DRAIN PIPE
24.	100 ØD ØPVC BALCONY DRAIN PIPE
25.	100 ØD ØPVC BALCONY DRAIN PIPE
26.	100 ØD ØPVC BALCONY DRAIN PIPE
27.	100 ØD ØPVC BALCONY DRAIN PIPE
28.	100 ØD ØPVC BALCONY DRAIN PIPE
29.	100 ØD ØPVC BALCONY DRAIN PIPE
30.	100 ØD ØPVC BALCONY DRAIN PIPE
31.	100 ØD ØPVC BALCONY DRAIN PIPE
32.	100 ØD ØPVC BALCONY DRAIN PIPE
33.	100 ØD ØPVC BALCONY DRAIN PIPE
34.	100 ØD ØPVC BALCONY DRAIN PIPE
35.	100 ØD ØPVC BALCONY DRAIN PIPE
36.	100 ØD ØPVC BALCONY DRAIN PIPE
37.	100 ØD ØPVC BALCONY DRAIN PIPE
38.	100 ØD ØPVC BALCONY DRAIN PIPE
39.	100 ØD ØPVC BALCONY DRAIN PIPE
40.	100 ØD ØPVC BALCONY DRAIN PIPE
41.	100 ØD ØPVC BALCONY DRAIN PIPE
42.	100 ØD ØPVC BALCONY DRAIN PIPE
43.	100 ØD ØPVC BALCONY DRAIN PIPE
44.	100 ØD ØPVC BALCONY DRAIN PIPE
45.	100 ØD ØPVC BALCONY DRAIN PIPE
46.	100 ØD ØPVC BALCONY DRAIN PIPE
47.	100 ØD ØPVC BALCONY DRAIN PIPE
48.	100 ØD ØPVC BALCONY DRAIN PIPE
49.	100 ØD ØPVC BALCONY DRAIN PIPE
50.	100 ØD ØPVC BALCONY DRAIN PIPE
51.	100 ØD ØPVC BALCONY DRAIN PIPE
52.	100 ØD ØPVC BALCONY DRAIN PIPE
53.	100 ØD ØPVC BALCONY DRAIN PIPE
54.	100 ØD ØPVC BALCONY DRAIN PIPE
55.	100 ØD ØPVC BALCONY DRAIN PIPE
56.	100 ØD ØPVC BALCONY DRAIN PIPE
57.	100 ØD ØPVC BALCONY DRAIN PIPE
58.	100 ØD ØPVC BALCONY DRAIN PIPE
59.	100 ØD ØPVC BALCONY DRAIN PIPE
60.	100 ØD ØPVC BALCONY DRAIN PIPE
61.	100 ØD ØPVC BALCONY DRAIN PIPE
62.	100 ØD ØPVC BALCONY DRAIN PIPE
63.	100 ØD ØPVC BALCONY DRAIN PIPE
64.	100 ØD ØPVC BALCONY DRAIN PIPE
65.	100 ØD ØPVC BALCONY DRAIN PIPE
66.	100 ØD ØPVC BALCONY DRAIN PIPE
67.	100 ØD ØPVC BALCONY DRAIN PIPE
68.	100 ØD ØPVC BALCONY DRAIN PIPE
69.	100 ØD ØPVC BALCONY DRAIN PIPE
70.	100 ØD ØPVC BALCONY DRAIN PIPE
71.	100 ØD ØPVC BALCONY DRAIN PIPE
72.	100 ØD ØPVC BALCONY DRAIN PIPE
73.	100 ØD ØPVC BALCONY DRAIN PIPE
74.	100 ØD ØPVC BALCONY DRAIN PIPE
75.	100 ØD ØPVC BALCONY DRAIN PIPE
76.	100 ØD ØPVC BALCONY DRAIN PIPE
77.	100 ØD ØPVC BALCONY DRAIN PIPE
78.	100 ØD ØPVC BALCONY DRAIN PIPE
79.	100 ØD ØPVC BALCONY DRAIN PIPE
80.	100 ØD ØPVC BALCONY DRAIN PIPE
81.	100 ØD ØPVC BALCONY DRAIN PIPE
82.	100 ØD ØPVC BALCONY DRAIN PIPE
83.	100 ØD ØPVC BALCONY DRAIN PIPE
84.	100 ØD ØPVC BALCONY DRAIN PIPE
85.	100 ØD ØPVC BALCONY DRAIN PIPE
86.	100 ØD ØPVC BALCONY DRAIN PIPE
87.	100 ØD ØPVC BALCONY DRAIN PIPE
88.	100 ØD ØPVC BALCONY DRAIN PIPE
89.	100 ØD ØPVC BALCONY DRAIN PIPE
90.	100 ØD ØPVC BALCONY DRAIN PIPE
91.	100 ØD ØPVC BALCONY DRAIN PIPE
92.	100 ØD ØPVC BALCONY DRAIN PIPE
93.	100 ØD ØPVC BALCONY DRAIN PIPE
94.	100 ØD ØPVC BALCONY DRAIN PIPE
95.	100 ØD ØPVC BALCONY DRAIN PIPE
96.	100 ØD ØPVC BALCONY DRAIN PIPE
97.	100 ØD ØPVC BALCONY DRAIN PIPE
98.	100 ØD ØPVC BALCONY DRAIN PIPE
99.	100 ØD ØPVC BALCONY DRAIN PIPE
100.	100 ØD ØPVC BALCONY DRAIN PIPE

LEGEND FIRE FIGHTING PIPE	
S.N.	DESCRIPTION
1.	100 ØD HYDRANT PIPE FOR ZONE 1
2.	100 ØD HYDRANT PIPE FOR ZONE 2
3.	100 ØD HYDRANT PIPE FOR ZONE 3
4.	100 ØD HYDRANT PIPE FOR ZONE 4
5.	100 ØD HYDRANT PIPE FOR ZONE 5
6.	100 ØD HYDRANT PIPE FOR ZONE 6
7.	100 ØD HYDRANT PIPE FOR ZONE 7
8.	100 ØD HYDRANT PIPE FOR ZONE 8
9.	100 ØD HYDRANT PIPE FOR ZONE 9
10.	100 ØD HYDRANT PIPE FOR ZONE 10
11.	100 ØD HYDRANT PIPE FOR ZONE 11
12.	100 ØD HYDRANT PIPE FOR ZONE 12
13.	100 ØD HYDRANT PIPE FOR ZONE 13
14.	100 ØD HYDRANT PIPE FOR ZONE 14
15.	100 ØD HYDRANT PIPE FOR ZONE 15
16.	100 ØD HYDRANT PIPE FOR ZONE 16
17.	100 ØD HYDRANT PIPE FOR ZONE 17
18.	100 ØD HYDRANT PIPE FOR ZONE 18
19.	100 ØD HYDRANT PIPE FOR ZONE 19
20.	100 ØD HYDRANT PIPE FOR ZONE 20
21.	100 ØD HYDRANT PIPE FOR ZONE 21
22.	100 ØD HYDRANT PIPE FOR ZONE 22
23.	100 ØD HYDRANT PIPE FOR ZONE 23
24.	100 ØD HYDRANT PIPE FOR ZONE 24
25.	100 ØD HYDRANT PIPE FOR ZONE 25
26.	100 ØD HYDRANT PIPE FOR ZONE 26
27.	100 ØD HYDRANT PIPE FOR ZONE 27
28.	100 ØD HYDRANT PIPE FOR ZONE 28
29.	100 ØD HYDRANT PIPE FOR ZONE 29
30.	100 ØD HYDRANT PIPE FOR ZONE 30
31.	100 ØD HYDRANT PIPE FOR ZONE 31
32.	100 ØD HYDRANT PIPE FOR ZONE 32
33.	100 ØD HYDRANT PIPE FOR ZONE 33
34.	100 ØD HYDRANT PIPE FOR ZONE 34
35.	100 ØD HYDRANT PIPE FOR ZONE 35
36.	100 ØD HYDRANT PIPE FOR ZONE 36
37.	100 ØD HYDRANT PIPE FOR ZONE 37
38.	100 ØD HYDRANT PIPE FOR ZONE 38
39.	100 ØD HYDRANT PIPE FOR ZONE 39
40.	100 ØD HYDRANT PIPE FOR ZONE 40
41.	100 ØD HYDRANT PIPE FOR ZONE 41
42.	100 ØD HYDRANT PIPE FOR ZONE 42
43.	100 ØD HYDRANT PIPE FOR ZONE 43
44.	100 ØD HYDRANT PIPE FOR ZONE 44
45.	100 ØD HYDRANT PIPE FOR ZONE 45
46.	100 ØD HYDRANT PIPE FOR ZONE 46
47.	100 ØD HYDRANT PIPE FOR ZONE 47
48.	100 ØD HYDRANT PIPE FOR ZONE 48
49.	100 ØD HYDRANT PIPE FOR ZONE 49
50.	100 ØD HYDRANT PIPE FOR ZONE 50
51.	100 ØD HYDRANT PIPE FOR ZONE 51
52.	100 ØD HYDRANT PIPE FOR ZONE 52
53.	100 ØD HYDRANT PIPE FOR ZONE 53
54.	100 ØD HYDRANT PIPE FOR ZONE 54
55.	100 ØD HYDRANT PIPE FOR ZONE 55
56.	100 ØD HYDRANT PIPE FOR ZONE 56
57.	100 ØD HYDRANT PIPE FOR ZONE 57
58.	100 ØD HYDRANT PIPE FOR ZONE 58
59.	100 ØD HYDRANT PIPE FOR ZONE 59
60.	100 ØD HYDRANT PIPE FOR ZONE 60
61.	100 ØD HYDRANT PIPE FOR ZONE 61
62.	100 ØD HYDRANT PIPE FOR ZONE 62
63.	100 ØD HYDRANT PIPE FOR ZONE 63
64.	100 ØD HYDRANT PIPE FOR ZONE 64
65.	100 ØD HYDRANT PIPE FOR ZONE 65
66.	100 ØD HYDRANT PIPE FOR ZONE 66
67.	100 ØD HYDRANT PIPE FOR ZONE 67
68.	100 ØD HYDRANT PIPE FOR ZONE 68
69.	100 ØD HYDRANT PIPE FOR ZONE 69
70.	100 ØD HYDRANT PIPE FOR ZONE 70
71.	100 ØD HYDRANT PIPE FOR ZONE 71
72.	100 ØD HYDRANT PIPE FOR ZONE 72
73.	100 ØD HYDRANT PIPE FOR ZONE 73
74.	100 ØD HYDRANT PIPE FOR ZONE 74
75.	100 ØD HYDRANT PIPE FOR ZONE 75
76.	100 ØD HYDRANT PIPE FOR ZONE 76
77.	100 ØD HYDRANT PIPE FOR ZONE 77
78.	100 ØD HYDRANT PIPE FOR ZONE 78
79.	100 ØD HYDRANT PIPE FOR ZONE 79
80.	100 ØD HYDRANT PIPE FOR ZONE 80
81.	100 ØD HYDRANT PIPE FOR ZONE 81
82.	100 ØD HYDRANT PIPE FOR ZONE 82
83.	100 ØD HYDRANT PIPE FOR ZONE 83
84.	100 ØD HYDRANT PIPE FOR ZONE 84
85.	100 ØD HYDRANT PIPE FOR ZONE 85
86.	100 ØD HYDRANT PIPE FOR ZONE 86
87.	100 ØD HYDRANT PIPE FOR ZONE 87
88.	100 ØD HYDRANT PIPE FOR ZONE 88
89.	100 ØD HYDRANT PIPE FOR ZONE 89
90.	100 ØD HYDRANT PIPE FOR ZONE 90
91.	100 ØD HYDRANT PIPE FOR ZONE 91
92.	100 ØD HYDRANT PIPE FOR ZONE 92
93.	100 ØD HYDRANT PIPE FOR ZONE 93
94.	100 ØD HYDRANT PIPE FOR ZONE 94
95.	100 ØD HYDRANT PIPE FOR ZONE 95
96.	100 ØD HYDRANT PIPE FOR ZONE 96
97.	100 ØD HYDRANT PIPE FOR ZONE 97
98.	100 ØD HYDRANT PIPE FOR ZONE 98
99.	100 ØD HYDRANT PIPE FOR ZONE 99
100.	100 ØD HYDRANT PIPE FOR ZONE 100



TYPICAL HORIZONTAL VENTILATION CALCULATION FOR W.C.									
S.NO	LOCATION	AREA (Sq.M)	HEIGHT (M)	VOLUME (Cu.M)	ACH	DESIGN (Cu.M)	SELECTED CFM	SELECTED CFM	SELECTED EXHAUST FAN
1	TYPICAL MECHANICAL VENTILATION FOR W.C & TOILET								
1.1	Bedroom 4 toilet	60.06	8.94	537	12	107.39	100	100	1 # 100 CFM INLINE FAN
1.2	SPU Toilet	40.26	8.94	360	12	71.98	100	100	1 # 100 CFM INLINE FAN

TOWER-4 FAR AREA AT UNIT 1 PER FLOOR				
(All Distances are in Meter & Areas in Sqm)				
ADDITIONS (A)				
ITEM	NO.S	WIDTH (MTR.)	LENGTH (MTR.)	AREA(SQ.M T.J) = NO.X LENGTH X WIDTH
1	1	3.950	0.650	2.568
2	1	3.150	4.875	15.356
3	1	7.975	3.075	24.323
4	1	4.150	4.205	17.451
5	1	3.900	0.670	2.613
6	1	19.100	7.650	146.115
7	1	1.725	2.200	3.795
8	1	4.150	4.350	18.053
9	1	5.500	1.800	9.900
10	1	3.450	1.950	6.728
TOTAL(A) =				247.101
DEDUCTION (B)				
ITEM	NO.S	WIDTH (MTR.)	LENGTH (MTR.)	AREA(SQ.M T.J) = NO.X LENGTH X WIDTH
S1	1	0.625	0.250	0.156
S2	1	1.225	0.300	0.368
S3	1	0.300	0.725	0.218
S4	1	1.050	0.800	0.840
S5	1	1.050	0.300	0.315
TOTAL				1.898
UNIT 1-FAR AREA CALCULATION = ADDITION(A) - (DEDUCTION (B))				
= 247.101 - 1.898				
= 245.203				SQMT



FAR AREA AT UNIT 2 PER FLOOR				
(All Distances are in Meter & Areas in Sqm)				
ADDITIONS (A)				
ITEM	NO.S	WIDTH (MTR.)	LENGTH (MTR.)	AREA(SQ.M T.J) = NO.X LENGTH X WIDTH
1C	1	3.900	0.650	2.535
2	1	3.150	4.875	15.356
3	1	7.975	3.075	24.323
4	1	4.150	4.205	17.451
5	1	3.900	0.670	2.613
6A	1	18.925	7.650	144.770
7A	1	1.550	2.200	3.410
8	1	4.150	4.350	18.053
9	1	5.500	1.800	9.900
10	1	3.450	1.950	6.728
TOTAL(A) =				245.344
DEDUCTION (B)				
ITEM	NO.S	WIDTH (MTR.)	LENGTH (MTR.)	AREA(SQ.M T.J) = NO.X LENGTH X WIDTH
S1	1	0.625	0.250	0.156
S2	1	1.225	0.300	0.368
S3	1	0.300	0.725	0.218
S4	1	1.050	0.800	0.840
S5	1	1.050	0.300	0.315
TOTAL				1.898
UNIT 2-FAR AREA CALCULATION = ADDITION(A) - (DEDUCTION (B))				
= 245.344 - 1.898				
= 243.446				SQMT

CORE FAR AREA AT TYPICAL FLOOR				
(All Distances are in Meter & Areas in Sqm)				
ADDITIONS (A)				
ITEM	NO.S	WIDTH (MTR.)	LENGTH (MTR.)	AREA(SQ.M T.J) = NO.X LENGTH X WIDTH
C1	1	5.011	1.194	5.983
C2	1	1.194	0.465	0.554
C3	1	6.001	1.908	11.438
C4	1	1.987	4.802	9.542
C5	1	1.248	0.516	0.644
C6	1	8.119	4.802	38.987
C7	1	9.600	8.848	84.941
TOTAL(A) =				162.126
DEDUCTION (B)				
ITEM	NO.S	WIDTH (MTR.)	LENGTH (MTR.)	AREA(SQ.M T.J) = NO.X LENGTH X WIDTH
L1	2	2.560	2.650	13.510
L2	2	2.750	2.850	15.575
S6	1	0.800	2.450	1.960
S7	1	0.700	0.600	0.420
S8	1	1.000	0.600	0.600
S9	1	3.250	0.600	1.950
S10	1	1.350	0.600	0.810
TOTAL				34.440
NON FAR AREA (STAIRCASE) (D)				
ITEM	NO.S	WIDTH (MTR.)	LENGTH (MTR.)	AREA(SQ.M T.J) = NO.X LENGTH X WIDTH
N1	1	1.600	2.180	3.488
N2	1	1.700	1.250	2.125
N3	1	6.200	7.000	43.400
N4	1	2.800	5.199	14.557
TOTAL NON FAR AREA (D)				63.570
NON FAR AREA (DUCTION) (E)				
ITEM	NO.S	WIDTH (MTR.)	LENGTH (MTR.)	AREA(SQ.M T.J) = NO.X LENGTH X WIDTH
L3	1	3.000	2.200	6.600
NON FAR AREA (E)				6.600
TOTAL NON FAR AREA CALCULATION (D-E)				56.970
TOTAL CORE FAR AREA CALCULATION = ADDITION(A) - (DEDUCTION (B)) + NON FAR AREA (D) - (NON FAR AREA (E))				
= 162.126 - 34.440 + 63.570 - 6.600				
= 84.656				SQMT
TOTAL FLOOR FAR AREA CALCULATION = TOTAL TYPICAL FLOOR UNIT 1 FAR AREA + TOTAL TYPICAL FLOOR UNIT 2 FAR AREA + TOTAL TYPICAL FLOOR CORE FAR AREA				
= 245.203 + 243.446 + 84.656				
= 573.305				SQMT

Checked and found for Public Health (Internal) Service only subject to comments in forwarding letter No. 257474 dated 08/02/2025

Checked and found for Public Health (Internal) Service only subject to comments in forwarding letter No. 257474 dated 08/02/2025

SAATCHI & SAATCHI TO BE READ WITH THIS OFFICE MEMO NO. 18/2025 DATED: 18/02/2025

Member Secretary B.P.A.C. Member B.P.A.C. Chairman B.P.A.C.

ARCHITECT'S SEAL & SIGNATURE: GIAN P. MATHUR ARCHITECT B. Arch., M.C.A. I.I.A. CA No. 80/5769

OWNER'S SEAL & SIGNATURE: For ELAN ENCLAVE PRIVATE LIMITED

PROPOSED GROUP HOUSING COLONY MEASURING 5.875 ACRES UNDER TOD POLICY DATED 09.02.2016/LICENSE NO. 50 OF 2019 DATED 07.03.2019 IN SECTOR -49, GRULGRAM BEING DEVELOPED BY ELAN ENCLAVE PRIVATE LIMITED UNDER COLLABORATION WITH V.A. AGRICULTURE PVT LTD

1. BUILDING HAS AUTOMATIC SPRINKLER SYSTEM WHEREVER REQUIRED BY NBC.

2. BUILDING WILL BE DESIGNED (STRUCTURES) AS PER RELEVANT IS CODES FOR EARTH QUAKE RESISTANCE.

3. MECHANICAL VENTILATION WITH 100% POWER BACK-UP FOR SERVICE AREAS.

PROJECT: PROPOSED GROUP HOUSING COLONY MEASURING 5.875 ACRES UNDER TOD POLICY DATED 09.02.2016/LICENSE NO. 50 OF 2019 DATED 07.03.2019 IN SECTOR -49, GRULGRAM BEING DEVELOPED BY ELAN ENCLAVE PRIVATE LIMITED UNDER COLLABORATION WITH V.A. AGRICULTURE PVT LTD