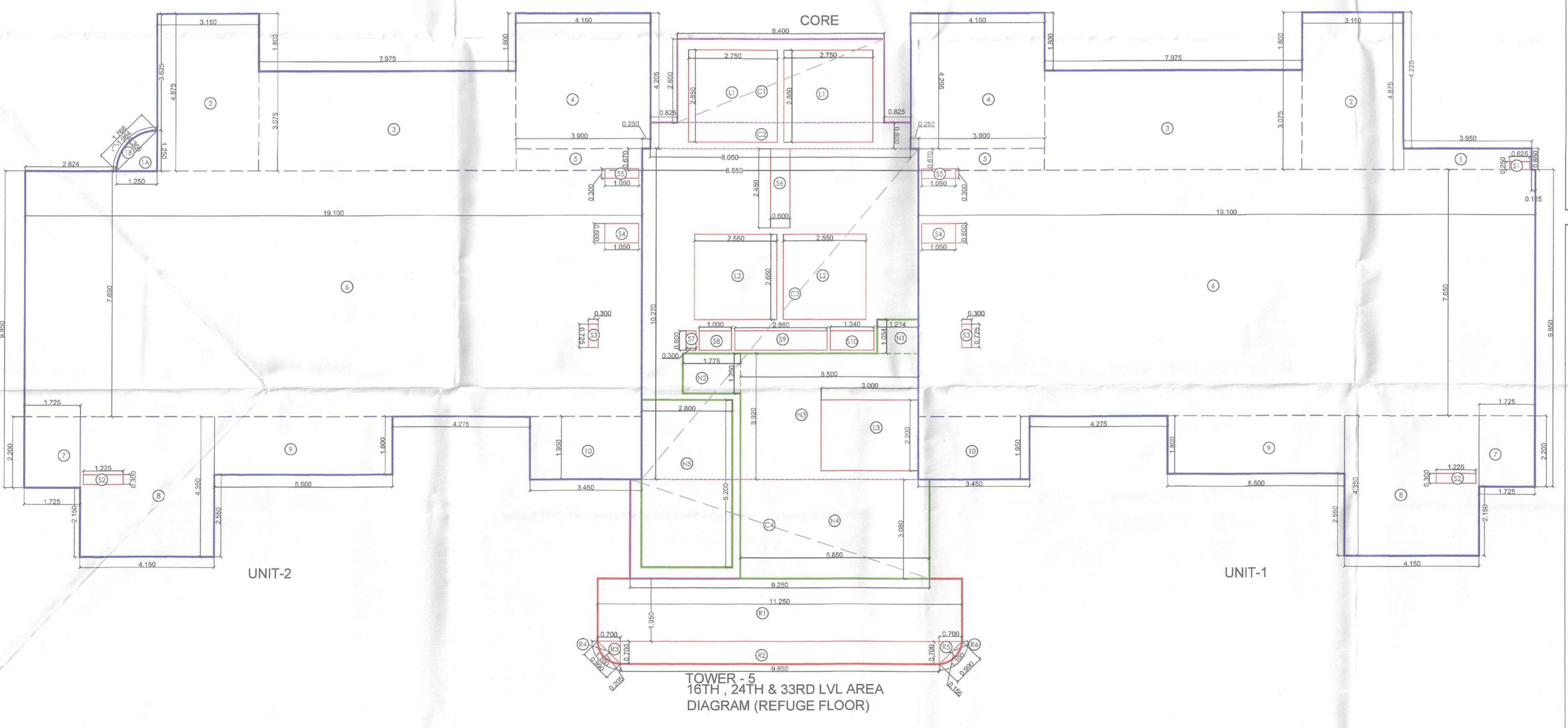


TOWER - 5  
REFUGE LVL LAYOUT  
(LEVEL-16th (LVL +63.075), 24TH (+90.075), 33RD (+120.450))



TOWER - 5  
16TH, 24TH & 33RD LVL AREA  
DIAGRAM (REFUGE FLOOR)

**TOWER-5  
FAR AREA AT UNIT 3 PER FLOOR**  
(All Distances are in Meter & Areas in Sqm)

ITEM	NO.S	WIDTH (MTR.)	LENGTH (MTR.)	AREA(SQ.M T) = NO.X LENGTH X WIDTH
1	1	3.050	0.650	2.588
2	1	3.150	4.875	15.356
3	1	7.975	3.075	24.522
4	1	4.150	4.205	17.451
5	1	3.900	0.670	2.613
6	1	19.100	7.650	146.115
7	1	1.125	2.200	3.765
8	1	4.150	4.350	18.053
9	1	5.500	1.800	9.900
10	1	3.450	1.950	6.728
TOTAL(A) =				247.101

**TOWER-5  
CORE FAR AREA AT TYPICAL FLOOR**  
(All Distances are in Meter & Areas in Sqm)

ITEM	NO.S	WIDTH (MTR.)	LENGTH (MTR.)	AREA(SQ.M T) = NO.X LENGTH X WIDTH
S1	1	0.625	0.250	0.156
S2	1	1.225	0.300	0.368
S3	1	0.300	0.725	0.218
S4	1	1.050	0.600	0.630
S5	1	1.050	0.300	0.315
TOTAL				1.688

UNIT-FAR AREA CALCULATION = ADDITION(A) - DEDUCTION(B)  
= 247.101 - 1.688 = 245.414 SQM

**FAR AREA AT UNIT 2 PER FLOOR**  
(All Distances are in Meter & Areas in Sqm)

ITEM	NO.S	WIDTH (MTR.)	LENGTH (MTR.)	AREA(SQ.M T) = NO.X LENGTH X WIDTH
1A	0.5	1.250	1.250	0.781
1B	0.667	0.366	1.768	0.432
2	1	3.150	4.875	15.356
3	1	7.975	3.075	24.522
4	1	4.150	4.205	17.451
5	1	3.900	0.670	2.613
6	1	19.100	7.650	146.115
7	1	1.125	2.200	3.765
8	1	4.150	4.350	18.053
9	1	5.500	1.800	9.900
10	1	3.450	1.950	6.728
TOTAL(A) =				245.746

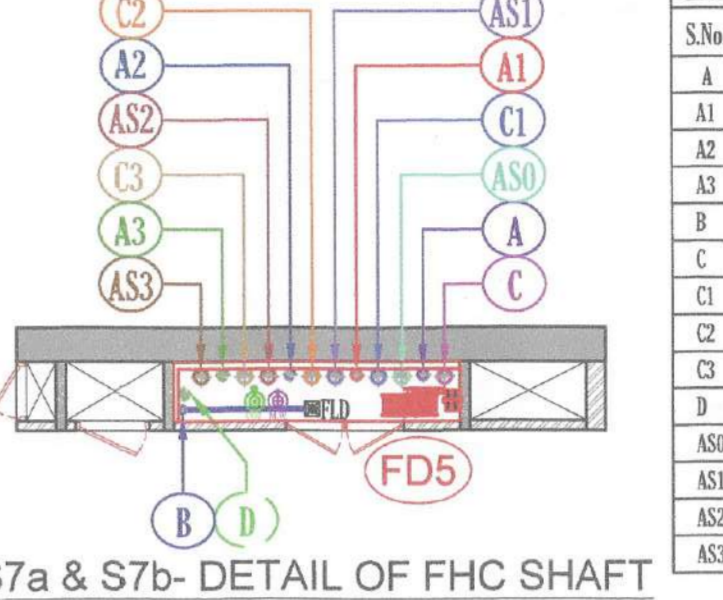
UNIT2 FAR AREA CALCULATION = ADDITION(A) - DEDUCTION(B)  
= 245.746 - 1.630 = 244.216 SQM

**TOTAL CORE FAR AREA CALCULATION = ADDITION(A) - DEDUCTION(B) - NONFAR AREA (D)**  
= 139.379 - 91.660 = 47.719 SQM

**TOTAL TYPICAL FLOOR FAR AREA CALCULATION = (TOTAL TYPICAL FLOOR UNIT 1 FAR AREA) + (TOTAL TYPICAL FLOOR UNIT 2 FAR AREA) + (TOTAL TYPICAL FLOOR CORE FAR AREA)**  
= 245.414 + 244.216 + 47.719 = 537.349 SQM

**LEGEND FLOORING PIPE:**

S.No.	DESCRIPTION	SIZE
1	110 Ø SOL PIPE	
2	110 Ø WASTE PIPE	
3	110 Ø KITCHEN WASTE PIPE	
4	110 Ø WASHING MACHINE WASTE PIPE	
5	75 Ø CARBAGE ROOM WASTE PIPE	
6	75 Ø UPVC VENT PIPE	
7	110 Ø UPVC BALCONY DRAIN PIPE	
8	110 Ø UPVC BALCONY DRAIN PIPE	
9	110 Ø UPVC BALCONY DRAIN PIPE	
10	110 Ø UPVC BALCONY DRAIN PIPE	
11	110 Ø UPVC BALCONY DRAIN PIPE	
12	110 Ø UPVC BALCONY DRAIN PIPE	
13	110 Ø UPVC BALCONY DRAIN PIPE	
14	110 Ø UPVC BALCONY DRAIN PIPE	
15	110 Ø UPVC BALCONY DRAIN PIPE	
16	110 Ø UPVC BALCONY DRAIN PIPE	
17	110 Ø UPVC BALCONY DRAIN PIPE	
18	110 Ø UPVC BALCONY DRAIN PIPE	
19	110 Ø UPVC BALCONY DRAIN PIPE	
20	110 Ø UPVC BALCONY DRAIN PIPE	
21	110 Ø UPVC BALCONY DRAIN PIPE	
22	110 Ø UPVC BALCONY DRAIN PIPE	
23	110 Ø UPVC BALCONY DRAIN PIPE	
24	110 Ø UPVC BALCONY DRAIN PIPE	
25	110 Ø UPVC BALCONY DRAIN PIPE	
26	110 Ø UPVC BALCONY DRAIN PIPE	
27	110 Ø UPVC BALCONY DRAIN PIPE	
28	110 Ø UPVC BALCONY DRAIN PIPE	
29	110 Ø UPVC BALCONY DRAIN PIPE	
30	110 Ø UPVC BALCONY DRAIN PIPE	
31	110 Ø UPVC BALCONY DRAIN PIPE	
32	110 Ø UPVC BALCONY DRAIN PIPE	
33	110 Ø UPVC BALCONY DRAIN PIPE	
34	110 Ø UPVC BALCONY DRAIN PIPE	
35	110 Ø UPVC BALCONY DRAIN PIPE	
36	110 Ø UPVC BALCONY DRAIN PIPE	
37	110 Ø UPVC BALCONY DRAIN PIPE	
38	110 Ø UPVC BALCONY DRAIN PIPE	
39	110 Ø UPVC BALCONY DRAIN PIPE	
40	110 Ø UPVC BALCONY DRAIN PIPE	
41	110 Ø UPVC BALCONY DRAIN PIPE	
42	110 Ø UPVC BALCONY DRAIN PIPE	
43	110 Ø UPVC BALCONY DRAIN PIPE	
44	110 Ø UPVC BALCONY DRAIN PIPE	
45	110 Ø UPVC BALCONY DRAIN PIPE	
46	110 Ø UPVC BALCONY DRAIN PIPE	
47	110 Ø UPVC BALCONY DRAIN PIPE	
48	110 Ø UPVC BALCONY DRAIN PIPE	
49	110 Ø UPVC BALCONY DRAIN PIPE	
50	110 Ø UPVC BALCONY DRAIN PIPE	
51	110 Ø UPVC BALCONY DRAIN PIPE	
52	110 Ø UPVC BALCONY DRAIN PIPE	
53	110 Ø UPVC BALCONY DRAIN PIPE	
54	110 Ø UPVC BALCONY DRAIN PIPE	
55	110 Ø UPVC BALCONY DRAIN PIPE	
56	110 Ø UPVC BALCONY DRAIN PIPE	
57	110 Ø UPVC BALCONY DRAIN PIPE	
58	110 Ø UPVC BALCONY DRAIN PIPE	
59	110 Ø UPVC BALCONY DRAIN PIPE	
60	110 Ø UPVC BALCONY DRAIN PIPE	
61	110 Ø UPVC BALCONY DRAIN PIPE	
62	110 Ø UPVC BALCONY DRAIN PIPE	
63	110 Ø UPVC BALCONY DRAIN PIPE	
64	110 Ø UPVC BALCONY DRAIN PIPE	
65	110 Ø UPVC BALCONY DRAIN PIPE	
66	110 Ø UPVC BALCONY DRAIN PIPE	
67	110 Ø UPVC BALCONY DRAIN PIPE	
68	110 Ø UPVC BALCONY DRAIN PIPE	
69	110 Ø UPVC BALCONY DRAIN PIPE	
70	110 Ø UPVC BALCONY DRAIN PIPE	
71	110 Ø UPVC BALCONY DRAIN PIPE	
72	110 Ø UPVC BALCONY DRAIN PIPE	
73	110 Ø UPVC BALCONY DRAIN PIPE	
74	110 Ø UPVC BALCONY DRAIN PIPE	
75	110 Ø UPVC BALCONY DRAIN PIPE	
76	110 Ø UPVC BALCONY DRAIN PIPE	
77	110 Ø UPVC BALCONY DRAIN PIPE	
78	110 Ø UPVC BALCONY DRAIN PIPE	
79	110 Ø UPVC BALCONY DRAIN PIPE	
80	110 Ø UPVC BALCONY DRAIN PIPE	
81	110 Ø UPVC BALCONY DRAIN PIPE	
82	110 Ø UPVC BALCONY DRAIN PIPE	
83	110 Ø UPVC BALCONY DRAIN PIPE	
84	110 Ø UPVC BALCONY DRAIN PIPE	
85	110 Ø UPVC BALCONY DRAIN PIPE	
86	110 Ø UPVC BALCONY DRAIN PIPE	
87	110 Ø UPVC BALCONY DRAIN PIPE	
88	110 Ø UPVC BALCONY DRAIN PIPE	
89	110 Ø UPVC BALCONY DRAIN PIPE	
90	110 Ø UPVC BALCONY DRAIN PIPE	
91	110 Ø UPVC BALCONY DRAIN PIPE	
92	110 Ø UPVC BALCONY DRAIN PIPE	
93	110 Ø UPVC BALCONY DRAIN PIPE	
94	110 Ø UPVC BALCONY DRAIN PIPE	
95	110 Ø UPVC BALCONY DRAIN PIPE	
96	110 Ø UPVC BALCONY DRAIN PIPE	
97	110 Ø UPVC BALCONY DRAIN PIPE	
98	110 Ø UPVC BALCONY DRAIN PIPE	
99	110 Ø UPVC BALCONY DRAIN PIPE	
100	110 Ø UPVC BALCONY DRAIN PIPE	



S7a & S7b- DETAIL OF FHC SHAFT

**LEGEND SHAFT:**

S.No.	DESCRIPTION	SIZE
S1	ELEC. SHAFT	1.05 X 0.60
S2	ST. PRESS SHAFT	0.95 X 1.38
S3	LOBBY PRESS SHAFT	0.60 X 2.450
S4	LOBBY PRESS SHAFT	0.50 X 1.050
S5	FIRE LOBBY PRESS SHAFT	1.34 X 0.60
S6	LV SHAFT	1 X 0.60
S7	PL SHAFT	0.30 X 0.60
S8	FHC SHAFT	2.850 X 0.60
S9	FHC SHAFT	3.260 X 0.60
S10	ELEC. SHAFT	0.60 X 1.20
S11	PL SHAFT	0.675 X 1.20
S12	ELEC. SHAFT	0.675 X 1.065
S13	PL SHAFT	0.675 X 1.07

**DOOR WINDOW SCHEDULE**

TYPE	WIDTH	HEIGHT	BILL LVL	INTL LVL	REMARKS
D1	1100	2400	+00	2400	BEDROOM
D2	700	2700	+00	2700	KITCHEN
D3	700	2400	+00	2400	TOILETS
D4	1500	2400	+00	2400	M. BEDROOM
D5	1250	2400	+00	2400	MUMTY MACHINE ROOM
D6	2075	2700	+00	2700	LIVING DINING
D7	2075	2700	+00	2700	LIVING DINING
D8	2075	2700	+00	2700	M. BEDROOM
D9	2075	2700	+00	2700	LIVING DINING
D10	2075	2700	+00	2700	LIVING DINING
D11	2075	2700	+00	2700	LIVING DINING
D12	2075	2700	+00	2700	LIVING DINING
D13	2075	2700	+00	2700	LIVING DINING
D14	2075	2700	+00	2700	LIVING DINING
D15	2075	2700	+00	2700	LIVING DINING
D16	2075	2700	+00	2700	LIVING DINING
D17	2075	2700	+00	2700	LIVING DINING
D18	2075	2700	+00	2700	LIVING DINING
D19	2075	2700	+00	2700	LIVING DINING
D20	2075	2700	+00	2700	LIVING DINING
D21	2075	2700	+00	2700	LIVING DINING
D22	2075	2700	+00	2700	LIVING DINING
D23	2075	2700	+00	2700	LIVING DINING
D24	2075	2700	+00	2700	LIVING DINING
D25	2075	2700	+00	2700	LIVING DINING
D26	2075	2700	+00	2700	LIVING DINING
D27	2075	2700	+00	2700	LIVING DINING
D28	2075	2700	+00	2700	LIVING DINING
D29	2075	2700	+00	2700	LIVING DINING
D30	2075	2700	+00	2700	LIVING DINING
D31	2075	2700	+00	2700	LIVING DINING
D32	2075	2700	+00	2700	LIVING DINING
D33	2075	2700	+00	2700	LIVING DINING
D34	2075	2700	+00	2700	LIVING DINING
D35	2075	2700	+00	2700	LIVING DINING
D36	2075	2700	+00	2700	LIVING DINING
D37	2075	2700	+00	2700	LIVING DINING
D38	2075	2700	+00	2700	LIVING DINING
D39	2075	2700	+00	2700	LIVING DINING
D40	2075	2700	+00	2700	LIVING DINING
D41	2075	2700	+00	2700	LIVING DINING
D42	2075	2700	+00	2700	LIVING DINING
D43	2075	2700	+00	2700	LIVING DINING
D44	2075	2700	+00	2700	LIVING DINING
D45	2075	2700	+00	2700	LIVING DINING
D46	2075	2700	+00	2700	LIVING DINING
D47	2075	2700	+00	2700	LIVING DINING
D48	2075	2700	+00	2700	LIVING DINING
D49	2075	2700	+00	2700	LIVING DINING
D50	2075	2700	+00	2700	LIVING DINING
D51	2075	2700	+00	2700	LIVING DINING
D52	2075	2700	+00	2700	LIVING DINING
D53	2075	2700	+00	2700	LIVING DINING
D54	2075	2700	+00	2700	LIVING DINING
D55	2075	2700	+00	2700	LIVING DINING
D56	2075	2700	+00	2700	LIVING DINING
D57	2075	2700	+00	2700	LIVING DINING
D58	2075	2700	+00	2700	LIVING DINING
D59	2075	2700	+00	2700	LIVING DINING
D60	2075	2700	+00	2700	LIVING DINING
D61	2075	2700	+00	2700	LIVING DINING
D62	2075	2700	+00	2700	LIVING DINING
D63	2075	2700	+00	2700	LIVING DINING
D64	2075	2700	+00	2700	LIVING DINING
D65	2075	2700	+00	2700	LIVING DINING
D66	2075	2700	+00	2700	LIVING DINING
D67	2075	2700	+00	2700	LIVING DINING
D68	2075	2700	+00	2700	LIVING DINING
D69	2075	2700	+00	2700	LIVING DINING
D70	2075	2700	+00	2700	LIVING DINING
D71	2075	2700	+00	2700	LIVING DINING
D72	2075	2700	+00	2700	LIVING DINING
D73	2075	2700	+00	2700	LIVING DINING
D74	2075	2700	+00	2700	LIVING DINING
D75	2075	2700	+00	2700	LIVING DINING
D76	2075	2700	+00	2700	LIVING DINING
D77	2075	2700	+00	2700	LIVING DINING
D78	2075	2700	+00	2700	LIVING DINING
D79	2075	2700	+00	2700	LIVING DINING
D80	2075	2700	+00	2700	LIVING DINING
D81	2075	2700	+00	2700	LIVING DINING
D82	2075	2700	+00	2700	LIVING DINING
D83	2075	2700	+00	2700	LIVING DINING
D84	2075	2700	+00	2700	LIVING DINING
D85	2075	2700	+00	2700	LIVING DINING
D86	2075	2700	+00	2700	LIVING DINING
D87	2075	2700	+00	2700	LIVING DINING
D88	2075	2700	+00	2700	LIVING DINING
D89	2075	2700	+00	2700	LIVING DINING
D90	2075	2700	+00	2700	LIVING DINING
D91	2075	2700	+00	2700	LIVING DINING
D92	2075	2700	+00	2700	LIVING DINING
D93	2075	2700	+00	2700	LIVING DINING
D94	2075	2700	+00	2700	LIVING DINING
D95	2075	2700	+00	2700	LIVING DINING
D96	2075	2700	+00	2700	LIVING DINING
D97	2075	2700	+00	2700	LIVING DINING
D98	2075	2700	+00	2700	LIVING DINING
D99	2075	2700	+00	2700	LIVING DINING
D100	2075	2700	+00	2700	LIVING DINING

**LEGEND FIRE FIGHTING PIPE:**

S.No.	DESCRIPTION	SIZE
F1	100 Ø HYDRANT PIPE FOR ZONE-1	
F2	100 Ø HYDRANT PIPE FOR ZONE-2	
F3	100 Ø HYDRANT PIPE FOR ZONE-3	
F4	100 Ø HYDRANT PIPE FOR ZONE-4	
F5	100 Ø HYDRANT PIPE FOR ZONE-1	
F6	100 Ø SPINNAZZLE PIPE FOR ZONE-1	
F7	100 Ø SPINNAZZLE PIPE FOR ZONE-2	
F8	100 Ø SPIN	