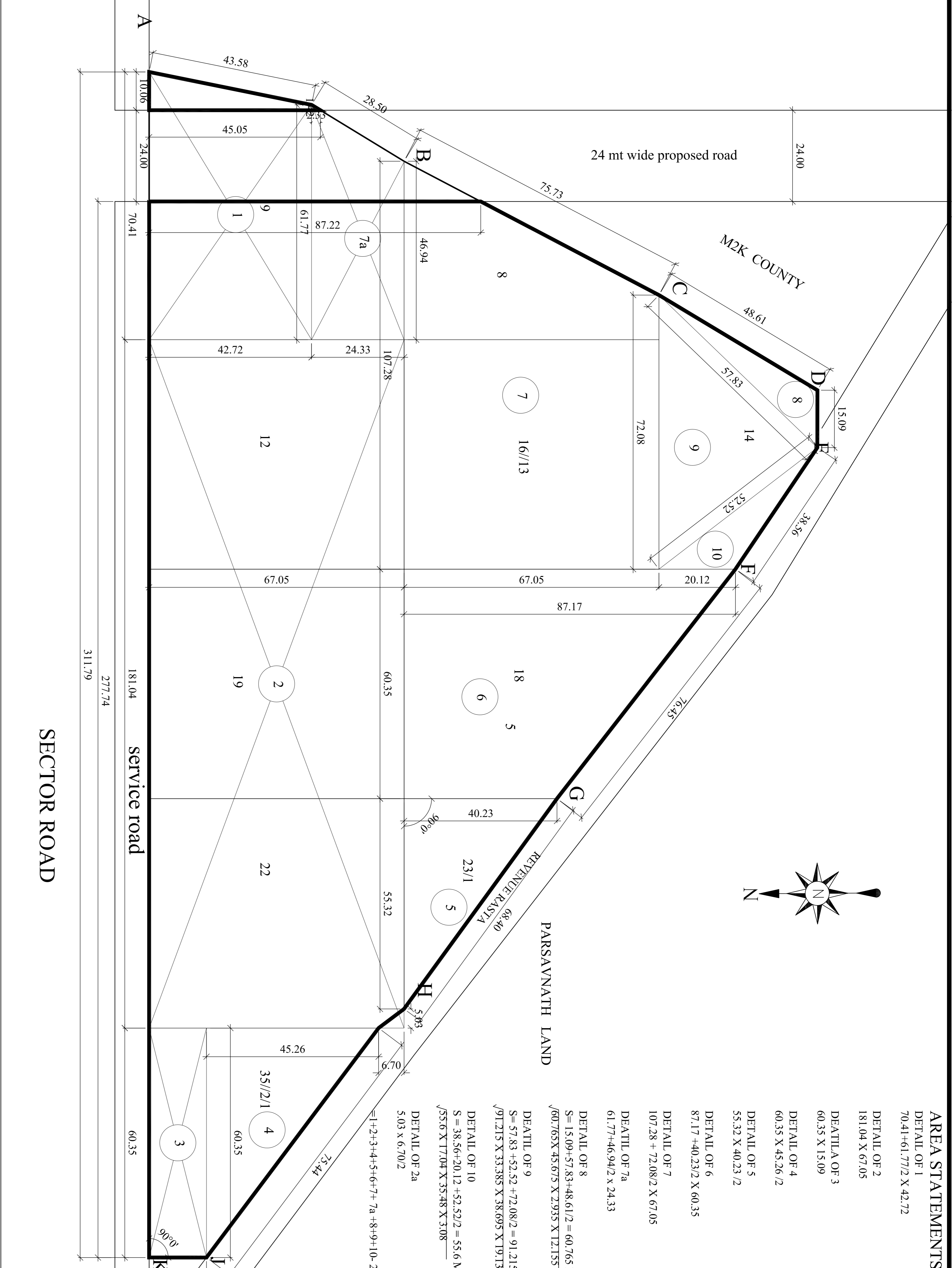


**AREA STATEMENTS:-**

DETAIL OF 1 70.41+61.77/2 X 42.72	=	2823.364 SQMT
DETAIL OF 2 181.04 X 67.05	=	12138.732 SQMT
DETAIL A OF 3 60.35 X 15.09	=	910.681 SQMT
DETAIL OF 4 60.35 X 45.26/2	=	1365.720 SQMT
DETAIL OF 5 55.32 X 40.23/2	=	1112.761 SQMT
DETAIL OF 6 87.17+40.23/2 X 60.35	=	3844.295 SQMT
DETAIL OF 7 107.28 + 72.08/2 X 67.05	=	6013.044 SQMT
DETAIL OF 7a 61.77+46.94/2 X 24.33	=	1322.457 sqmt
DETAIL OF 8 S = 15.09+57.83+48.61/2 = 60.765 MT √60.765X 45.675 X 2.935 X 12.155	=	314.664 SQMT
DETAIL OF 9 S = 57.83 +52.52 +72.08/2 = 91.215 MT √91.215 X 33.385 X 38.695 X 19.135	=	1501.586 SQMT
DETAIL OF 10 S = 38.56+20.12 +52.52/2 = 55.6 MT √55.6 X 17.04 X 35.78 X 3.08	=	321.765 SQMT
DETAIL OF 2a 5.03 x 6.70/2	=	16.850 sqmt
=1+2+3+4+5+6+7+ 7a+8+9+10- 2a	=	31652.219 sqmt 7.821 ACRES



Area under 24 mt wide Road = 45.05+87.22/2 x 24 = 1587.24 sqmt = 0.145 acre  
 Area under Other side = 10.06+1.42/2 x 42.72 + 1.42x2.33/2 = 245.212+1.654 = 246.866 sqmt = 0.061 acre  
 Net Plot Area = 31652.219 - 834.106 = 30818.113 sqmt = 7.615 acre.

**SECTOR ROAD**

PROJECTS:  
**DEMARCACTION PLAN OF THE RESIDENTIAL GROUP HOUSING COMPLEX FALLING IN THE REVENUE ESTATE OF VILLAGE DHARUHERA TEHSIL/ DISTRICT REWARI BEARING ON KHASRA NOS 16//8,9,12,13,14,18,19,22, 23, 35//1<sup>2</sup> IN AN AREA OF 7.781 ACRES LAND (LICENCE NO 118 OF 2007)- BY M/S WELLWORTH HOMES PVT LTD**

DRAWN BY:	M/S WELLWORTH HOMES PVT LTD
CHKD BY:	
DATE:	OCT, 2007
SCALE	1:500
AUTHORISED SIGNATORY (FOR OWNERS)	