

Note

- BUILDING HAS AUTOMATIC SPRINKLER SYSTEM WHEREVER REQUIRED BY NBC.
- BUILDING WILL BE DESIGNED (STRUCTURES) AS PER RELEVANT IS CODES FOR EARTH QUAKE RESISTANCE.
- ALL TOILET & KITCHEN HAVE PERMANENT VENTILATION /EXHAUST
- ALL BUILDINGS ARE NATURALLY-VENTILATED AND WHERE EVER REQUIRED MECHANICAL VENTILATION IS PROPOSED WITH 100% POWER BACKUP.

Project
 Proposed building plan of Phase-02 Group Housing Colony an area measuring 12.05 acres (Licence No. 02/218 of Sector-102, 03/2011) at JCT. of NH-100 & NH-6, Sector-102, Connaught Place, New Delhi-110007.
 Countrywide Promoters Private Limited (Amalgamated with MIS BPTP Limited vide NCLT Chandigarh Order Dated 20th September 2024.)

Design Architect
 DPA CONSULTANTS PVT LTD
 3rd FLOOR, L&T BUILDING, #88, GUBBON ROAD, TASKER TOWN, SHIVAJI NAGAR, BENGALURU - 560001
 TEL: 26535099 FAX: 26438312

Client
 Countrywide Promoters Private Limited (Amalgamated with MIS BPTP Limited vide NCLT Chandigarh Order Dated 20th September 2024.)
 OT-14, 3rd floor, Next Door,
 Parkland Sector-76,
 Faridabad-121004
Associate Architect

RISMIS ARCHITECTS
 RSMS ARCHITECTS PVT. LTD.
 69, Nara Niwas, Bhawanai Kunj,
 (Behind D2), Vasant Kunj,
 New Delhi-110070.
 Tel.: 011-26898616, 26898617
 WWW.RISMIS-ARCH.COM

This is a "PROVISIONAL BUILDING PLAN" approved only for the purpose of filing applications for the permit process.

APPROVED FOR PERMIT (DRAWING NO. 02/218 OF SECTOR-102)

APPROVED FOR PERMIT (DRAWING NO. 03/2011)

APPROVED FOR PERMIT (DRAWING NO. 02/218 OF SECTOR-102)

APPROVED FOR PERMIT (DRAWING NO. 03/2011)

APPROVED FOR PERMIT (DRAWING NO. 02/218 OF SECTOR-102)

APPROVED FOR PERMIT (DRAWING NO. 03/2011)

APPROVED FOR PERMIT (DRAWING NO. 02/218 OF SECTOR-102)

APPROVED FOR PERMIT (DRAWING NO. 03/2011)

APPROVED FOR PERMIT (DRAWING NO. 02/218 OF SECTOR-102)

APPROVED FOR PERMIT (DRAWING NO. 03/2011)

APPROVED FOR PERMIT (DRAWING NO. 02/218 OF SECTOR-102)

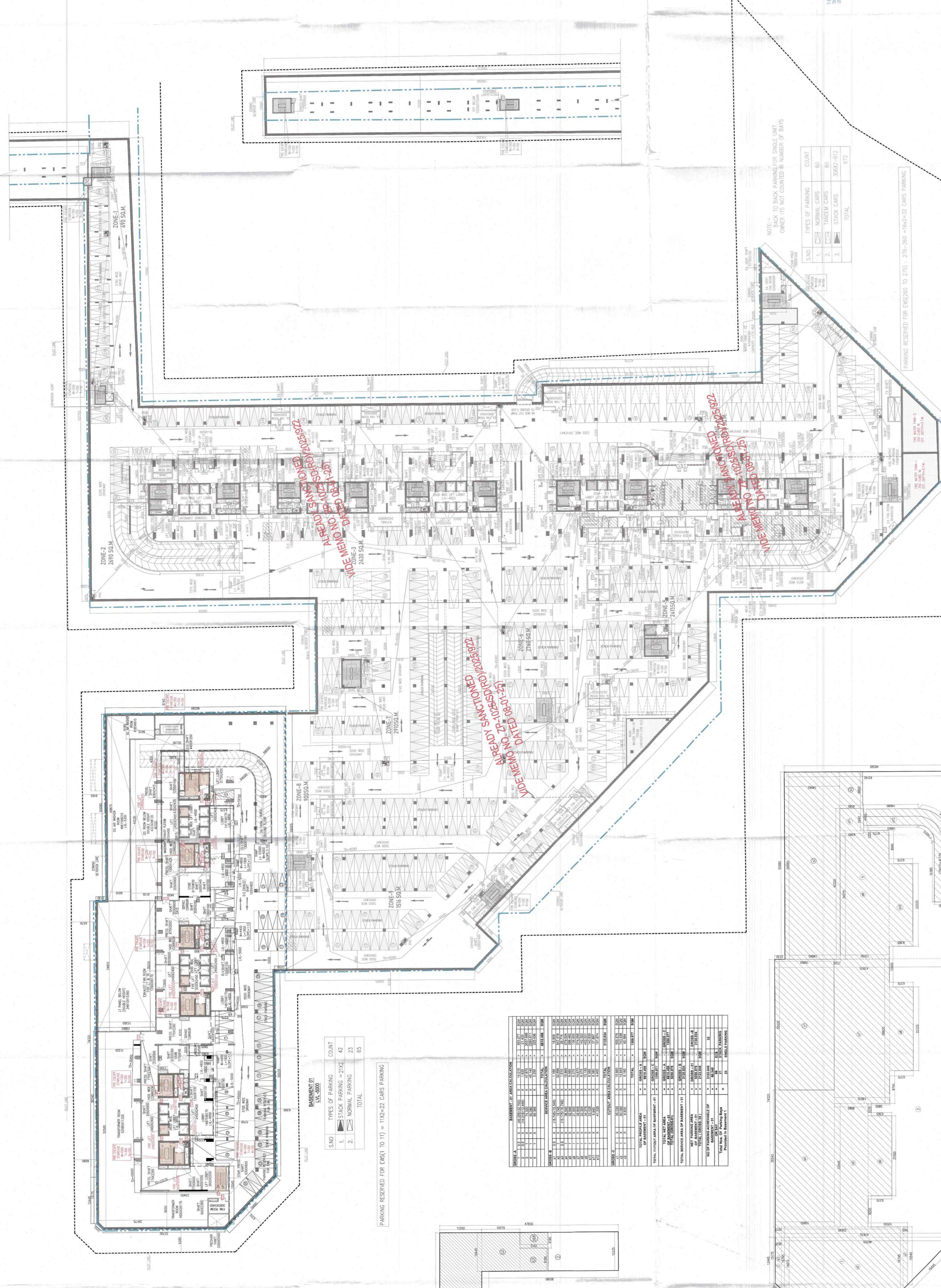
APPROVED FOR PERMIT (DRAWING NO. 03/2011)

APPROVED FOR PERMIT (DRAWING NO. 02/218 OF SECTOR-102)

APPROVED FOR PERMIT (DRAWING NO. 03/2011)

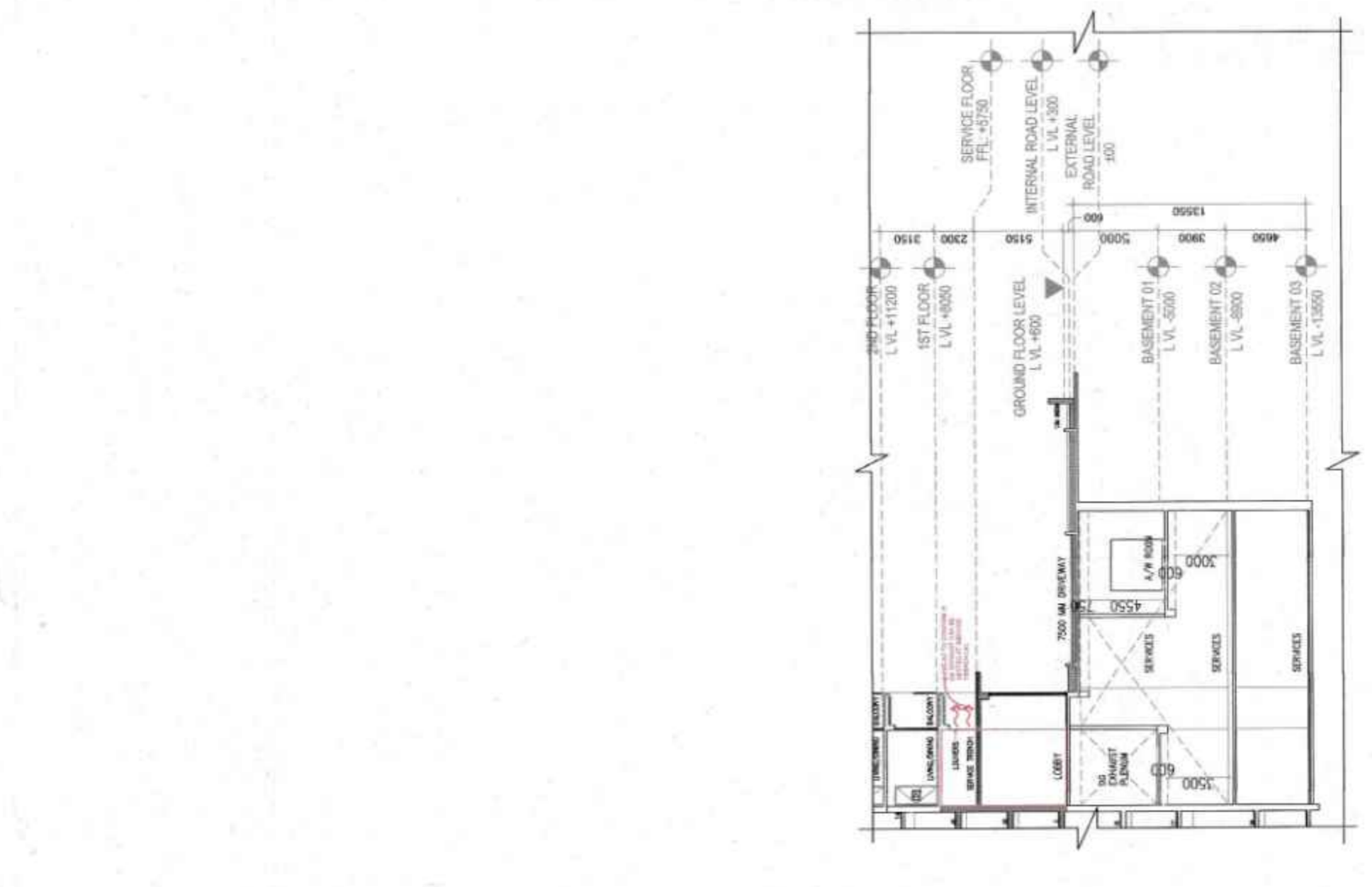
APPROVED FOR PERMIT (DRAWING NO. 02/218 OF SECTOR-102)

APPROVED FOR PERMIT (DRAWING NO. 03/2011)



NOTE:
 * BACK TO BACK PARKING FOR SINGLE UNIT OWNER IS NOT COUNTED IN NUMBER OF BAYS

S.NO	TYPES OF PARKING	COUNT
1.	NORMAL CARS	60
2.	TANDEM CARS	60
3.	STACK CARS	500/2-612
	TOTAL	672



BASEMENT (I) S.I.C. SHEET

S.NO	TYPES OF PARKING	COUNT
1.	STACK PARKING	42
2.	NORMAL PARKING	23
	TOTAL	65

PARKING RESERVED FOR EW(S) TO (1) = 11X2-22 CARS PARKING

PART AREA (BASEMENT-I) (ALREADY SANCTIONED)

S.NO.	TOTAL AREA (BASEMENT-I) (ALREADY SANCTIONED)	NET AREA (BASEMENT-I) (ALREADY SANCTIONED)	NO OF PARKING AVAILABLE OF	NO OF PARKING AVAILABLE OF
1.	1111.11	1111.11	11	11
2.	1111.11	1111.11	11	11
3.	1111.11	1111.11	11	11
4.	1111.11	1111.11	11	11
5.	1111.11	1111.11	11	11
6.	1111.11	1111.11	11	11
7.	1111.11	1111.11	11	11
8.	1111.11	1111.11	11	11
9.	1111.11	1111.11	11	11
10.	1111.11	1111.11	11	11
11.	1111.11	1111.11	11	11
12.	1111.11	1111.11	11	11
13.	1111.11	1111.11	11	11
14.	1111.11	1111.11	11	11
15.	1111.11	1111.11	11	11
16.	1111.11	1111.11	11	11
17.	1111.11	1111.11	11	11
18.	1111.11	1111.11	11	11
19.	1111.11	1111.11	11	11
20.	1111.11	1111.11	11	11
21.	1111.11	1111.11	11	11
22.	1111.11	1111.11	11	11
23.	1111.11	1111.11	11	11
24.	1111.11	1111.11	11	11
25.	1111.11	1111.11	11	11
26.	1111.11	1111.11	11	11
27.	1111.11	1111.11	11	11
28.	1111.11	1111.11	11	11
29.	1111.11	1111.11	11	11
30.	1111.11	1111.11	11	11
31.	1111.11	1111.11	11	11
32.	1111.11	1111.11	11	11
33.	1111.11	1111.11	11	11
34.	1111.11	1111.11	11	11
35.	1111.11	1111.11	11	11
36.	1111.11	1111.11	11	11
37.	1111.11	1111.11	11	11
38.	1111.11	1111.11	11	11
39.	1111.11	1111.11	11	11
40.	1111.11	1111.11	11	11
41.	1111.11	1111.11	11	11
42.	1111.11	1111.11	11	11
43.	1111.11	1111.11	11	11
44.	1111.11	1111.11	11	11
45.	1111.11	1111.11	11	11
46.	1111.11	1111.11	11	11
47.	1111.11	1111.11	11	11
48.	1111.11	1111.11	11	11
49.	1111.11	1111.11	11	11
50.	1111.11	1111.11	11	11
51.	1111.11	1111.11	11	11
52.	1111.11	1111.11	11	11
53.	1111.11	1111.11	11	11
54.	1111.11	1111.11	11	11
55.	1111.11	1111.11	11	11
56.	1111.11	1111.11	11	11
57.	1111.11	1111.11	11	11
58.	1111.11	1111.11	11	11
59.	1111.11	1111.11	11	11
60.	1111.11	1111.11	11	11
61.	1111.11	1111.11	11	11
62.	1111.11	1111.11	11	11
63.	1111.11	1111.11	11	11
64.	1111.11	1111.11	11	11
65.	1111.11	1111.11	11	11
66.	1111.11	1111.11	11	11
67.	1111.11	1111.11	11	11
68.	1111.11	1111.11	11	11
69.	1111.11	1111.11	11	11
70.	1111.11	1111.11	11	11
71.	1111.11	1111.11	11	11
72.	1111.11	1111.11	11	11
73.	1111.11	1111.11	11	11
74.	1111.11	1111.11	11	11
75.	1111.11	1111.11	11	11
76.	1111.11	1111.11	11	11
77.	1111.11	1111.11	11	11
78.	1111.11	1111.11	11	11
79.	1111.11	1111.11	11	11
80.	1111.11	1111.11	11	11
81.	1111.11	1111.11	11	11
82.	1111.11	1111.11	11	11
83.	1111.11	1111.11	11	11
84.	1111.11	1111.11	11	11
85.	1111.11	1111.11	11	11
86.	1111.11	1111.11	11	11
87.	1111.11	1111.11	11	11
88.	1111.11	1111.11	11	11
89.	1111.11	1111.11	11	11
90.	1111.11	1111.11	11	11
91.	1111.11	1111.11	11	11
92.	1111.11	1111.11	11	11
93.	1111.11	1111.11	11	11
94.	1111.11	1111.11	11	11
95.	1111.11	1111.11	11	11
96.	1111.11	1111.11	11	11
97.	1111.11	1111.11	11	11
98.	1111.11	1111.11	11	11
99.	1111.11	1111.11	11	11
100.	1111.11	1111.11	11	11

