

TOWER 4.1 LOWER PENTHOUSE FLOOR AREA DIAGRAM
AT LVL + 133200
SCALE 1:100

AUTHORITY STAMP :

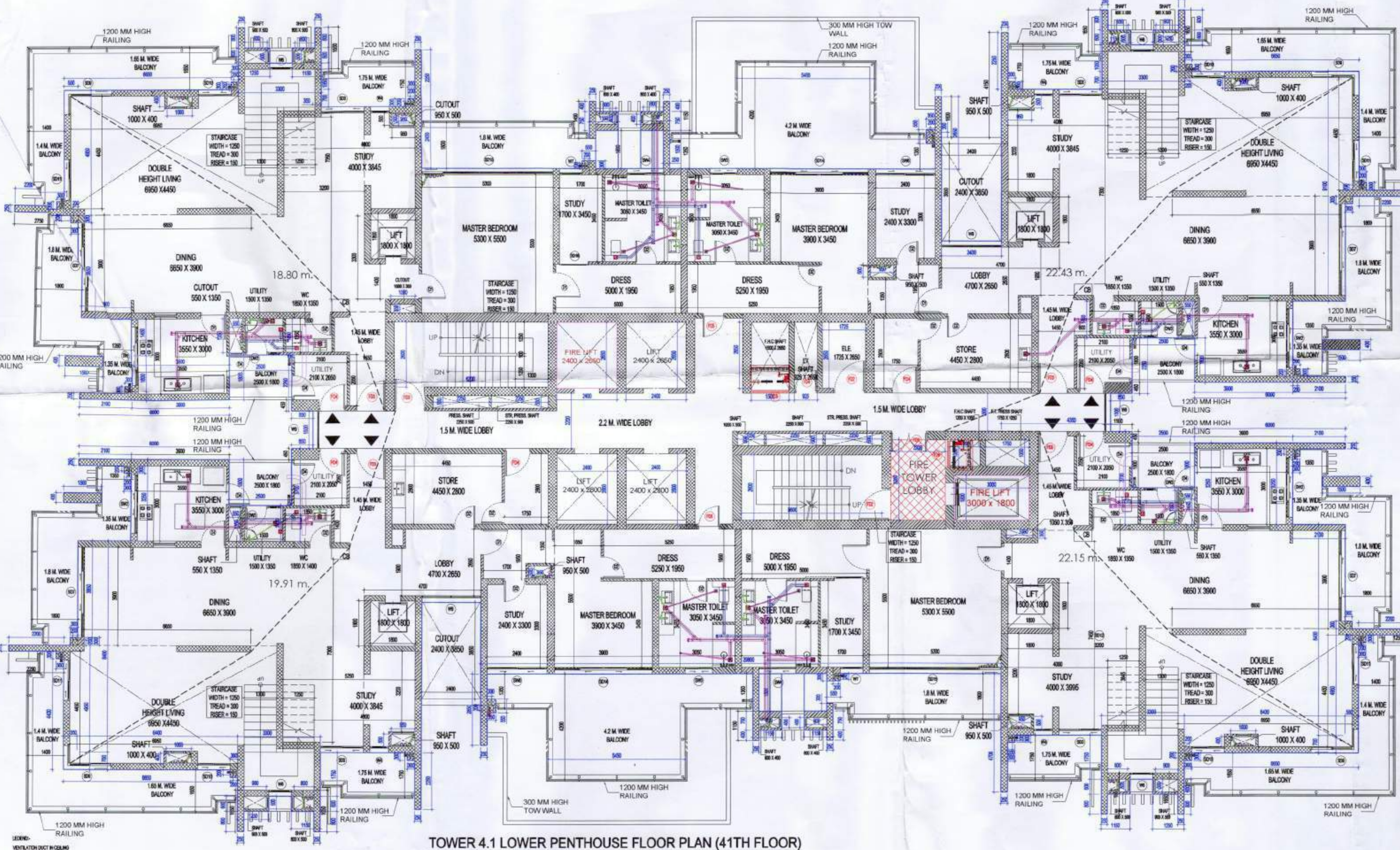
This is a PROVISIONAL BUILDING PLAN
approved only for the purpose of inviting
Objections from the general public

Signature of Project Architect: Rajeev Agarwal
Signature of Structural Engineer: NNC Consulting Structural Engineers
Signature of MEP Consultant: Greenbox Designs
Signature of Landscape Consultant: P-1/23, DLF City Phase 2
Signature of Owner: KRISUM CORPORATION PVT. LTD.

LEGEND	LENGTH (m)	WIDTH (m)	Nos.	AREA (sqm)
ADDITIONS				
A	25.150	14.850	1	373.478
B	9.350	9.100	2	170.170
C	13.700	6.400	2	175.360
D	30.600	5.300	1	162.200
E	3.600	3.700	1	13.320
F	2.500	1.400	2	7.000
G	3.600	0.350	2	2.520
H	2.100	0.250	4	2.100
I	2.200	0.250	2	1.100
J	0.300	0.300	20	1.800
K	1.300	0.400	4	2.080
L	2.400	12.000	1	28.800
M	2.400	2.400	1	5.760
N	0.300	0.300	0.300	0.300
O	0.300	0.300	2	0.360
P	4.500	13.000	1	58.500
Q	7.200	1.400	2	20.160
R	3.800	1.800	2	13.680
S	0.850	2.200	2	3.740
T	6.600	0.100	2	1.320
U	0.850	4.950	4	16.860
V	0.850	0.100	2	0.170
W	3.300	1.700	2	11.220
X	1.200	0.800	4	3.840
Y	1.200	0.800	4	3.840
Z	1.200	0.800	4	3.840
AA	1.200	0.800	4	3.840
AB	1.200	0.800	4	3.840
AC	1.200	0.800	4	3.840
AD	1.200	0.800	4	3.840
AE	1.200	0.800	4	3.840
AF	1.200	0.800	4	3.840
AG	1.200	0.800	4	3.840
AH	1.200	0.800	4	3.840
AI	1.200	0.800	4	3.840
AJ	1.200	0.800	4	3.840
AK	1.200	0.800	4	3.840
AL	1.200	0.800	4	3.840
AM	1.200	0.800	4	3.840
AN	1.200	0.800	4	3.840
AO	1.200	0.800	4	3.840
AP	1.200	0.800	4	3.840
QA	0.300	1.300	4	1.560
QB	0.300	1.300	4	1.560
QC	0.300	1.300	4	1.560
QD	0.300	1.300	4	1.560
QE	0.300	1.300	4	1.560
QF	0.300	1.300	4	1.560
QG	0.300	1.300	4	1.560
QH	0.300	1.300	4	1.560
QI	0.300	1.300	4	1.560
QJ	0.300	1.300	4	1.560
QK	0.300	1.300	4	1.560
QL	0.300	1.300	4	1.560
QM	0.300	1.300	4	1.560
QN	0.300	1.300	4	1.560
QO	0.300	1.300	4	1.560
QP	0.300	1.300	4	1.560
QA	0.300	1.300	4	1.560
QB	0.300	1.300	4	1.560
QC	0.300	1.300	4	1.560
QD	0.300	1.300	4	1.560
QE	0.300	1.300	4	1.560
QF	0.300	1.300	4	1.560
QG	0.300	1.300	4	1.560
QH	0.300	1.300	4	1.560
QI	0.300	1.300	4	1.560
QJ	0.300	1.300	4	1.560
QK	0.300	1.300	4	1.560
QL	0.300	1.300	4	1.560
QM	0.300	1.300	4	1.560
QN	0.300	1.300	4	1.560
QO	0.300	1.300	4	1.560
QP	0.300	1.300	4	1.560
TOTAL ADDITIONS				1150.480
SUBTRACTIONS				
A	2.400	2.400	2	11.520
B	2.400	2.400	2	11.520
C	2.400	2.400	2	11.520
D	2.400	2.400	2	11.520
E	2.400	2.400	2	11.520
F	2.400	2.400	2	11.520
G	2.400	2.400	2	11.520
H	2.400	2.400	2	11.520
I	2.400	2.400	2	11.520
J	2.400	2.400	2	11.520
K	2.400	2.400	2	11.520
L	2.400	2.400	2	11.520
M	2.400	2.400	2	11.520
N	2.400	2.400	2	11.520
O	2.400	2.400	2	11.520
P	2.400	2.400	2	11.520
Q	2.400	2.400	2	11.520
R	2.400	2.400	2	11.520
S	2.400	2.400	2	11.520
T	2.400	2.400	2	11.520
U	2.400	2.400	2	11.520
V	2.400	2.400	2	11.520
W	2.400	2.400	2	11.520
X	2.400	2.400	2	11.520
Y	2.400	2.400	2	11.520
Z	2.400	2.400	2	11.520
AA	2.400	2.400	2	11.520
AB	2.400	2.400	2	11.520
AC	2.400	2.400	2	11.520
AD	2.400	2.400	2	11.520
AE	2.400	2.400	2	11.520
AF	2.400	2.400	2	11.520
AG	2.400	2.400	2	11.520
AH	2.400	2.400	2	11.520
AI	2.400	2.400	2	11.520
AJ	2.400	2.400	2	11.520
AK	2.400	2.400	2	11.520
AL	2.400	2.400	2	11.520
AM	2.400	2.400	2	11.520
AN	2.400	2.400	2	11.520
AO	2.400	2.400	2	11.520
AP	2.400	2.400	2	11.520
TOTAL SUBTRACTIONS				97.608
TOTAL F.A. AREA OF TOWER 4.1 LOWER PENTHOUSE FLOOR				1052.874

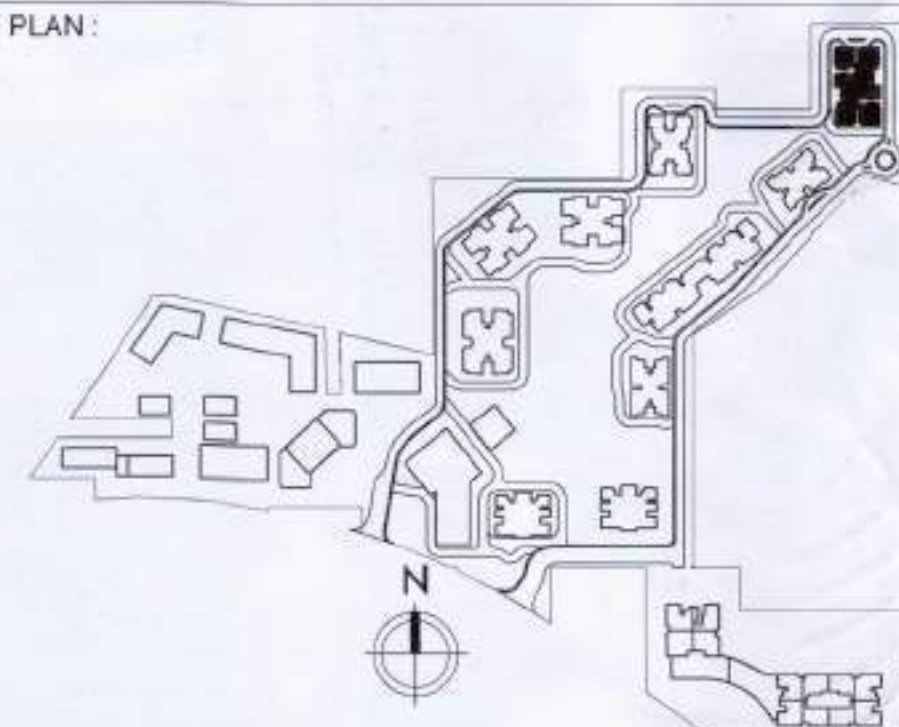
LEGEND	LENGTH (m)	WIDTH (m)	Nos.	AREA (sqm)
ADDITIONS				
Z1	1.400	5.475	4	30.660
Z2	0.075	1.050	4	0.315
Z3	0.050	0.875	4	0.175
Z4	0.300	0.575	4	0.690
Z5	0.875	0.900	4	3.150
Z6	0.575	0.300	4	0.690
Z7	0.875	1.300	4	4.550
Z8	2.575	1.750	4	18.025
Z9	0.300	1.450	4	1.740
Z10	1.800	3.475	4	25.020
Z11	3.900	1.100	4	17.160
Z12	0.900	1.900	4	6.840
Z13	1.050	0.300	4	1.260
Z14	1.350	0.375	4	2.025
Z15	0.150	0.420	4	0.252
Z16	0.150	1.080	4	0.648
Z17	0.300	1.600	4	1.920
Z18	2.500	1.800	4	18.000
Z19	0.075	1.800	2	21.870
Z20	0.925	0.900	2	1.665
Z21	0.900	1.600	2	2.880
Z22	0.375	0.300	2	0.225
Z23	0.675	0.150	2	0.203
Z24	5.450	2.850	2	31.095
Z25	10.250	1.350	2	27.675
Z26	0.350	1.000	2	0.700
Z27	2.200	3.200	1	7.040
Z28	6.200	2.600	1	16.120
Z29	5.500	2.600	1	14.550
TOTAL ADDITIONS				299.003
TOTAL F.A. AREA OF TOWER 4.1 LOWER PENTHOUSE FLOOR (BUILTUP AREA)				1052.874
TOWER 4.1 LOWER PENTHOUSE FLOOR PLAN (BUILTUP AREA)				1351.877

S.NO.	NAME	SIZE (WxH)	SILL LVL.	LINTEL LVL.	TYPE
1	FD1	1500x2400	0	2400	1hr FIRE RATED
2	FD2	1250x2400	0	2400	1hr FIRE RATED
3	FD3	1200x2400	0	2400	1hr FIRE RATED
4	FD4	1000x2400	0	2400	1hr FIRE RATED
5	FD5	900x2400	0	2400	1hr FIRE RATED
6	FD6	800x2400	0	2400	1hr FIRE RATED
7	FD7	1050x2400	0	2400	1hr FIRE RATED
8	FD8	900x2400	0	2400	1hr FIRE RATED
9	FD9	1500x2100	1500/0	2100	2100
10	DW1	1500x2100	1500/0	2100	2100
11	DW2	1800x2100	1800/0	2100	2100
12	DW3	1350x2100	1350/0	2100	2100
13	DW4	1800x2400	as/ elevation	2400	2400
14	SD1	1300x2400	0	2400	2400
15	SD2	1600x2400	0	2400	2400
16	SD3	1700x2400	0	2400	2400
17	SD4	2000x2400	0	2400	2400
18	SD5	3400x2400	0	2400	2400
19	SD6	As/ plan	0	2400	2400
20	SD7	As/ plan	0	2400	2400
21	SD8	As/ plan	0	2400	2400
22	SD9	As/ plan	0	as/ elevation	as/ elevation
23	SD10	1300	0	as/ elevation	as/ elevation
24	SD11	1600	0	as/ elevation	as/ elevation
25	SD12	3200x2400	0	2400	2400
26	SD13	3500x2400	0	2400	2400
27	SD14	3900x2400	0	2400	2400
28	SD15	5300x2400	0	2400	2400
29	SD16	1150x2400	0	2400	2400
30	SD17	1650x2400	0	2400	2400
31	SD18	2400x2400	0	2400	2400
32	SD19	3100x2400	0	2400	2400
33	SD20	As/ plan	0	2400	2400
34	SD21	1700x1500	900	2400	2400
35	SD22	2350x1500	900	2400	2400
36	SD23	1100x1200	1200	2400	2400
37	SD24	1450x1200	1200	2400	2400
38	SD25	1650x1500	900	2400	2400
39	SD26	2400x1500	900	2400	2400
40	SD27	1750x1200	1200	2400	2400
41	SD28	450x1200	1200	2400	2400
42	SD29	500x900	1500	2400	2400
43	SD30	700x900	1500	2400	2400
44	SD31	700x900	1500	2400	2400
45	SD32	900x900	1500	2400	2400
46	SD33	500	as/ elevation	as/ elevation	as/ elevation
47	SD34	900	as/ elevation	as/ elevation	as/ elevation
48	SD35	900x900	1500	2400	2400
49	SD36	2400x1500	900	2400	2400
50	SD37	3200x2400	0	2400	2400



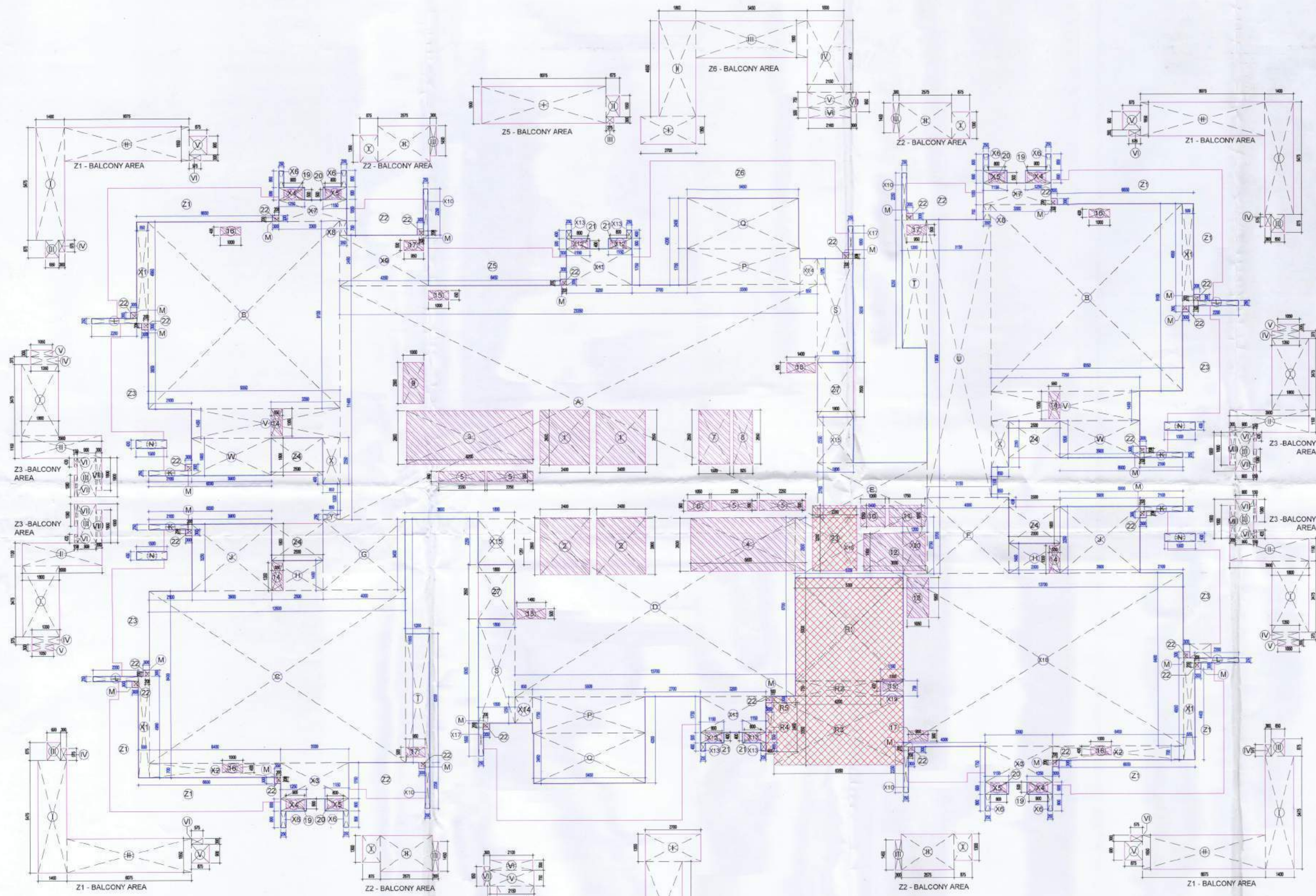
TOWER 4.1 LOWER PENTHOUSE FLOOR PLAN (41ST FLOOR)
AT LVL + 133200
SCALE 1:100

KEY PLAN :

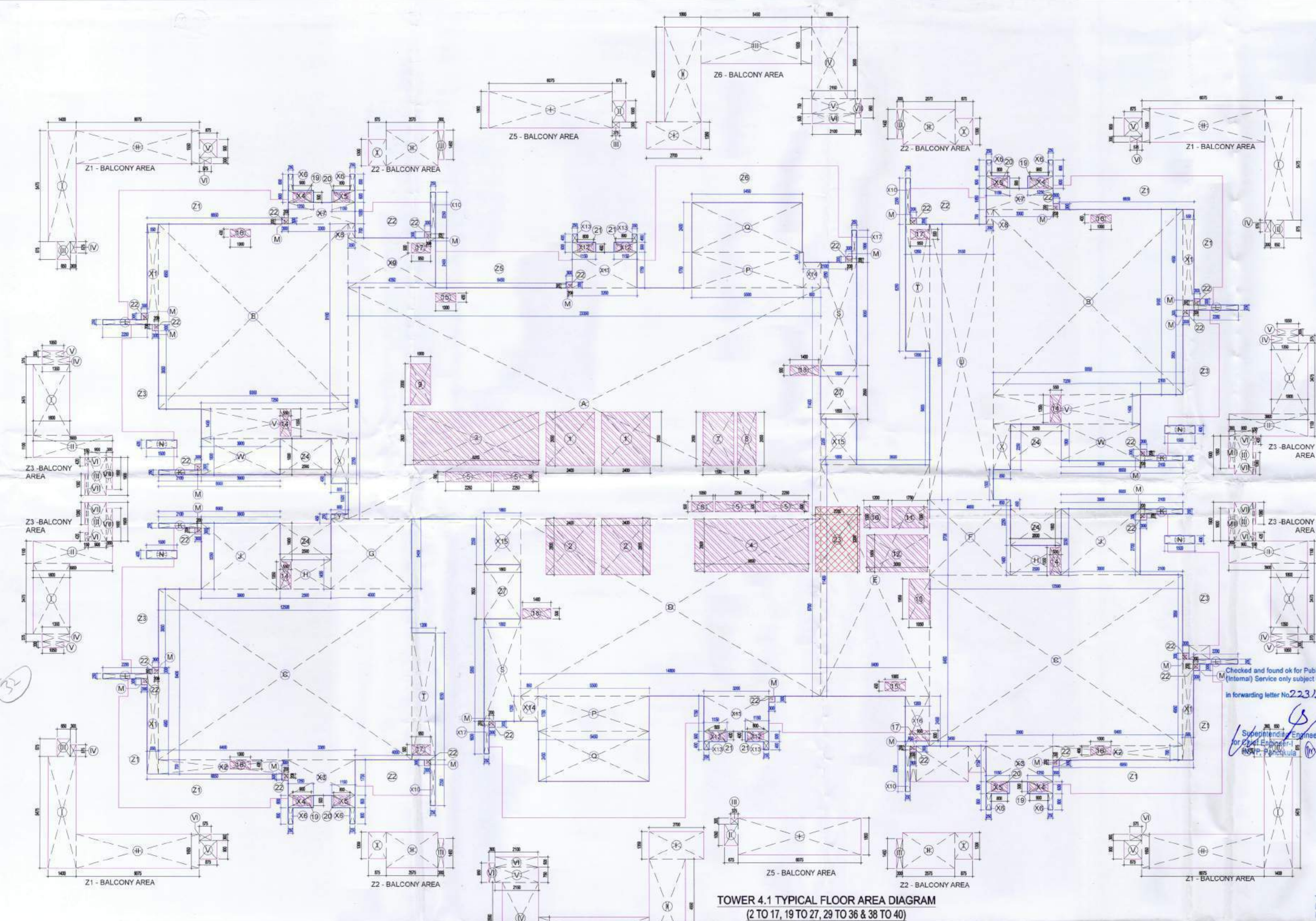


PROJECT ARCHITECT:
rajeev agarwal architects
J-1063, Chittaranjan park
New Delhi - 110019
tel: 011-40526848
website: www.rajeevagarwal.com

STRUCTURE
NNC CONSULTING STRUCTURAL ENGINEERS
C-76, 3rd Floor, Akshay Park, Main Road, B-10
Main Street, Vasant Vihar, New Delhi-110025
Phone: 011-26047515/16/17/18/19/20/21/22/23/24/25/26/27/28/29/30/31/32/33/34/35/36/37/38/39/40/41/42/43/44/45/46/47/48/49/50/51/52/53/54/55/56/57/58/59/60/61/62/63/64/65/66/67/68/69/70/71/72/73/74/75/76/77/78/79/80/81/82/83/84/85/86/87/88/89/90/91/92/93/94/95/96/97/98/99/100/101/102/103/104/105/106/107/108/109/110/111/112/113/114/115/116/117/118/119/120/121/122/123/124/125/126/127/128/129/130/131/132/133/134/135/136/137/138/139/140/141/142/143/144/145/146/147/148/149/150/151/152/153/154/155/156/157/158/159/160/161/162/163/164/165/166/167/168/169/170/171/172/173/174/175/176/177/178/179/180/181/182/183/184/185/186/187/188/189/190/191/192/193/194/195/196/197/198/199/200/201/202/203/204/205/206/207/208/209/210/211/212/213/214/215/216/217/218/219/220/221/222/223/224/225/226/227/228/229/230/231/232/233/234/235/236/237/238/239/240/241/242/243/244/245/



TOWER -4.1 REFUGE FLOOR PLAN (F.A.R. CALCULATION)				
LEGEND	LENGTH (m)	WIDTH (m)	Nos.	AREA (sqm)
ADDITIONS				
A	23.300	11.400	1	266.220
B	9.300	8.100	2	151.380
C	12.500	4.400	1	55.000
D	12.500	8.100	1	101.250
E	4.400	2.700	1	11.880
F	3.900	2.700	2	20.790
G	4.000	3.400	1	13.600
H	2.500	1.400	2	7.000
I	3.900	3.200	2	25.080
J	2.100	0.200	4	0.840
K	2.500	0.200	4	1.000
L	2.500	0.200	4	1.000
M	2.500	0.200	4	1.000
N	1.500	0.400	4	2.400
O	1.500	0.400	4	2.400
P	1.500	0.400	4	2.400
Q	1.500	0.400	4	2.400
R	0.800	2.200	2	3.520
S	1.500	5.900	2	17.100
T	1.500	6.200	2	18.600
U	1.500	13.000	2	39.000
V	7.200	1.400	2	20.160
W	1.500	1.500	2	4.500
X	0.800	2.200	2	3.520
Y	1.500	1.500	2	4.500
Z	0.500	4.400	2	4.400
AA	0.500	4.400	2	4.400
AB	0.500	4.400	2	4.400
AC	0.500	4.400	2	4.400
AD	0.500	4.400	2	4.400
AE	0.500	4.400	2	4.400
AF	0.500	4.400	2	4.400
AG	0.500	4.400	2	4.400
AH	0.500	4.400	2	4.400
AI	0.500	4.400	2	4.400
AJ	0.500	4.400	2	4.400
AK	0.500	4.400	2	4.400
AL	0.500	4.400	2	4.400
AM	0.500	4.400	2	4.400
AN	0.500	4.400	2	4.400
AO	0.500	4.400	2	4.400
AP	0.500	4.400	2	4.400
AQ	0.500	4.400	2	4.400
AR	0.500	4.400	2	4.400
AS	0.500	4.400	2	4.400
AT	0.500	4.400	2	4.400
AU	0.500	4.400	2	4.400
AV	0.500	4.400	2	4.400
AW	0.500	4.400	2	4.400
AX	0.500	4.400	2	4.400
AY	0.500	4.400	2	4.400
AZ	0.500	4.400	2	4.400
BA	0.500	4.400	2	4.400
BB	0.500	4.400	2	4.400
BC	0.500	4.400	2	4.400
BD	0.500	4.400	2	4.400
BE	0.500	4.400	2	4.400
BF	0.500	4.400	2	4.400
BG	0.500	4.400	2	4.400
BH	0.500	4.400	2	4.400
BI	0.500	4.400	2	4.400
BJ	0.500	4.400	2	4.400
BK	0.500	4.400	2	4.400
BL	0.500	4.400	2	4.400
BM	0.500	4.400	2	4.400
BN	0.500	4.400	2	4.400
BO	0.500	4.400	2	4.400
BP	0.500	4.400	2	4.400
BQ	0.500	4.400	2	4.400
BR	0.500	4.400	2	4.400
BS	0.500	4.400	2	4.400
BT	0.500	4.400	2	4.400
BU	0.500	4.400	2	4.400
BV	0.500	4.400	2	4.400
BW	0.500	4.400	2	4.400
BX	0.500	4.400	2	4.400
BY	0.500	4.400	2	4.400
BZ	0.500	4.400	2	4.400
CA	0.500	4.400	2	4.400
CB	0.500	4.400	2	4.400
CC	0.500	4.400	2	4.400
CD	0.500	4.400	2	4.400
CE	0.500	4.400	2	4.400
CF	0.500	4.400	2	4.400
CG	0.500	4.400	2	4.400
CH	0.500	4.400	2	4.400
CI	0.500	4.400	2	4.400
CJ	0.500	4.400	2	4.400
CK	0.500	4.400	2	4.400
CL	0.500	4.400	2	4.400
CM	0.500	4.400	2	4.400
CN	0.500	4.400	2	4.400
CO	0.500	4.400	2	4.400
CP	0.500	4.400	2	4.400
CQ	0.500	4.400	2	4.400
CR	0.500	4.400	2	4.400
CS	0.500	4.400	2	4.400
CT	0.500	4.400	2	4.400
CU	0.500	4.400	2	4.400
CV	0.500	4.400	2	4.400
CW	0.500	4.400	2	4.400
CX	0.500	4.400	2	4.400
CY	0.500	4.400	2	4.400
CZ	0.500	4.400	2	4.400
DA	0.500	4.400	2	4.400
DB	0.500	4.400	2	4.400
DC	0.500	4.400	2	4.400
DD	0.500	4.400	2	4.400
DE	0.500	4.400	2	4.400
DF	0.500	4.400	2	4.400
DG	0.500	4.400	2	4.400
DH	0.500	4.400	2	4.400
DI	0.500	4.400	2	4.400
DJ	0.500	4.400	2	4.400
DK	0.500	4.400	2	4.400
DL	0.500	4.400	2	4.400
DM	0.500	4.400	2	4.400
DN	0.500	4.400	2	4.400
DO	0.500	4.400	2	4.400
DP	0.500	4.400	2	4.400
DQ	0.500	4.400	2	4.400
DR	0.500	4.400	2	4.400
DS	0.500	4.400	2	4.400
DT	0.500	4.400	2	4.400
DU	0.500	4.400	2	4.400
DV	0.500	4.400	2	4.400
DW	0.500	4.400	2	4.400
DX	0.500	4.400	2	4.400
DY	0.500	4.400	2	4.400
DZ	0.500	4.400	2	4.400
EA	0.500	4.400	2	4.400
EB	0.500	4.400	2	4.400
EC	0.500	4.400	2	4.400
ED	0.500	4.400	2	4.400
EE	0.500	4.400	2	4.400
EF	0.500	4.400	2	4.400
EG	0.500	4.400	2	4.400
EH	0.500	4.400	2	4.400
EI	0.500	4.400	2	4.400
EJ	0.500	4.400	2	4.400
EK	0.500	4.400	2	4.400
EL	0.500	4.400	2	4.400
EM	0.500	4.400	2	4.400
EN	0.500	4.400	2	4.400
EO	0.500	4.400	2	4.400
EP	0.500	4.400	2	4.400
EQ	0.500	4.400	2	4.400
ER	0.500	4.400	2	4.400
ES	0.500	4.400	2	4.400
ET	0.500	4.400	2	4.400
EU	0.500	4.400	2	4.400
EV	0.500	4.400	2	4.400
EW	0.500	4.400	2	4.400
EX	0.500	4.400	2	4.400
EY	0.500	4.400	2	4.400
EZ	0.500	4.400	2	4.400
FA	0.500	4.400	2	4.400
FB	0.500	4.400	2	4.400
FC	0.500	4.400	2	4.400
FD	0.500	4.400	2	4.400
FE	0.500	4.400	2	4.400
FF	0.500	4.400	2	4.400
FG	0.500	4.400	2	4.400
FH	0.500	4.400	2	4.400
FI	0.500	4.400	2	4.400
FJ	0.500	4.400	2	4.400
FK	0.500	4.400	2	4.400
FL	0.500	4.400	2	4.400
FM	0.500	4.400	2	4.400
FN	0.500	4.400	2	4.400
FO	0.500	4.400	2	4.400
FP	0.500	4.400	2	4.400
FQ	0.500	4.400	2	4.400
FR	0.500	4.400	2	4.400
FS	0.500	4.400	2	4.400
FT	0.500	4.400	2	4.400
FU	0.500	4.400	2	4.400
FV	0.500	4.400	2	4.400
FW	0.500	4.400	2	4.400
FX	0.500	4.400	2	4.400
FY	0.500	4.400	2	4.400
FZ	0.500	4.400	2	4.400
GA	0.500	4.400	2	4.400
GB	0.500	4.400	2	4.400
GC	0.500	4.400	2	4.400
GD	0.500	4.400	2	4.400
GE	0.500	4.400	2	4.400
GF	0.500	4.400	2	4.400
GG	0.500	4.400	2	4.400
GH	0.500	4.400	2	4.400
GI	0.500	4.400	2	4.400
GJ	0.500	4.400	2	4.400
GK	0.500	4.400	2	4.400
GL	0.500	4.400	2	4.400
GM	0.500	4.400	2	4.400
GN	0.500	4.400	2	4.400
GO	0.500	4.400	2	4.400
GP	0.500	4.400	2	4.400
GQ	0.500	4.400	2	4.400
GR	0.500	4.400	2	4.400
GS	0.500	4.400	2	4.400
GT	0.500	4.400	2	4.400
GU	0.500	4.400	2	4.400
GV	0.500	4.400	2	4.400
GW	0.500	4.400	2	4.400
GX	0.500	4.400	2	4.400
GY	0.500	4.400	2	4.400
GZ	0.500	4.400	2	4.400
HA	0.500	4.400	2	4.400
HB	0.500	4.400	2	4.400
HC	0.500	4.400	2	4.400
HD	0.500	4.400	2	4.400
HE	0.500	4.400	2	4.400
HF	0.500	4.400	2	4.400
HG	0.500	4.400	2	4.400
HH	0.500	4.400	2	4.400
HI	0.500	4.400	2	4.400
HJ	0.500	4.400	2	4.400
HK	0.500	4.400	2	4.400
HL	0.500	4.400	2	4.400
HM	0.500	4.400	2	4.400
HN	0.500	4.400	2	4.400
HO	0.500	4.400	2	4.400
HP	0.500	4.400	2	4.400
HQ	0.500	4.400	2	4.400
HR	0.500	4.400	2	4.400
HS	0.500	4.400	2	4.400
HT	0.500	4.400	2	4.400
HU	0.500	4.400	2	4.400
HV	0.500	4.400	2	4.400
HW	0.500	4.400	2	4.400
HX	0.500	4.400	2	4.400
HY	0.500	4.400	2	4.400
HZ	0.500	4.400	2	4.400
IA	0.500	4.400	2	4.400
IB	0.500	4.400	2	4.400
IC	0.500	4.400	2	4.400
ID	0.500	4.400	2	4.400
IE	0.500	4.400	2	4.400
IF	0.500	4.400	2	4.400
IG	0.500	4.400	2	4.400
IH	0.500	4.400	2	4.400
II	0.500	4.400	2	4.400
IJ	0.500	4.400	2	4.400
IK	0.500	4.400	2	4.400
IL	0.500	4.400	2	4.400
IM	0.500	4.400	2	4.400
IN	0.500	4.400	2	4.400
IO	0.500	4.400	2	4.400
IP	0.500	4.400	2	4.400
IQ	0.500	4.400	2	4.400
IR	0.500	4.400	2	4.400
IS	0.500	4.400	2	4.400
IT	0.500	4.400	2	4.400
IU	0.500	4.400	2	4.400
IV	0.500	4.400	2	4.400
IW	0.500	4.400	2	4.400
IX	0.500	4.400	2	4.400
IY	0.500	4.400	2	4.400
IZ	0.500	4.400	2	4.400
JA	0.500	4.400	2	4.400
JB	0.500	4.400	2	4.400
JC	0.500	4.400	2	4.400
JD	0.500	4.400	2	4.400
JE	0.500	4.400	2	4.400
JF	0.500	4.400	2	4.400
JG	0.500	4.400	2	4.400
JH	0.500</			



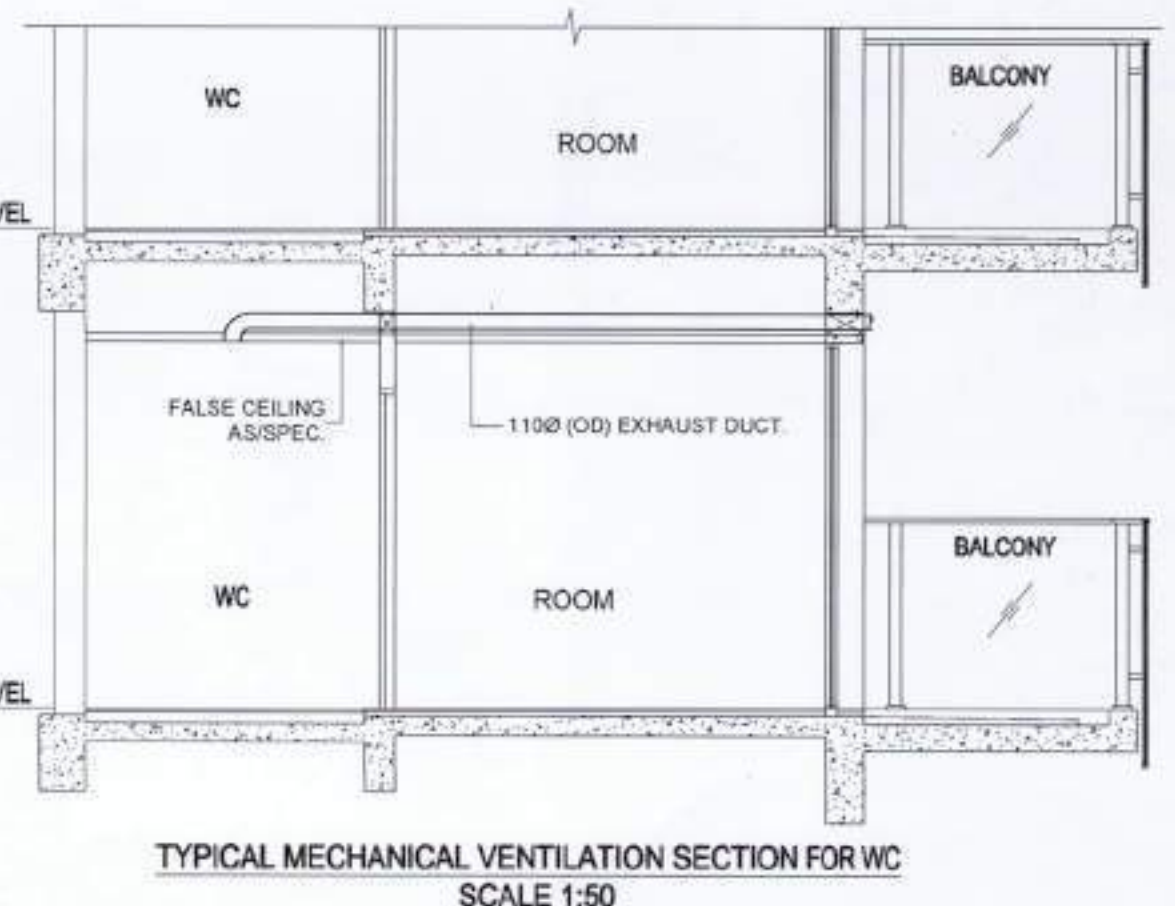
TOWER 4.1 TYPICAL FLOOR AREA DIAGRAM
(2 TO 17, 19 TO 27, 29 TO 36 & 38 TO 40)
SCALE 1:100

AUTHORITY STAMP:

This is a "PROVISIONAL BUILDING PLAN" approved only for the purpose of inviting objections from the general public.

Checked and found ok for Public Health (Intimate) Service only subject to comments in forwarding letter No.223/52 dt. 13/03/24
Syed Asad Engineer (HQ)
AD PA ATP
Ram Arora Bhai JD(HQ)

Sanctioned to be read with this office Memo No. 2 DATED:



TYPICAL MECHANICAL VENTILATION SECTION FOR WC
SCALE 1:50

- LEGEND:**
- 1. 1000 MM HIGH RAILING
 - 2. 1000 MM HIGH RAILING
 - 3. 1000 MM HIGH RAILING
 - 4. 1000 MM HIGH RAILING
 - 5. 1000 MM HIGH RAILING
 - 6. 1000 MM HIGH RAILING
 - 7. 1000 MM HIGH RAILING
 - 8. 1000 MM HIGH RAILING
 - 9. 1000 MM HIGH RAILING
 - 10. 1000 MM HIGH RAILING
 - 11. 1000 MM HIGH RAILING
 - 12. 1000 MM HIGH RAILING
 - 13. 1000 MM HIGH RAILING
 - 14. 1000 MM HIGH RAILING
 - 15. 1000 MM HIGH RAILING
 - 16. 1000 MM HIGH RAILING
 - 17. 1000 MM HIGH RAILING
 - 18. 1000 MM HIGH RAILING
 - 19. 1000 MM HIGH RAILING
 - 20. 1000 MM HIGH RAILING
 - 21. 1000 MM HIGH RAILING
 - 22. 1000 MM HIGH RAILING
 - 23. 1000 MM HIGH RAILING
 - 24. 1000 MM HIGH RAILING
 - 25. 1000 MM HIGH RAILING
 - 26. 1000 MM HIGH RAILING
 - 27. 1000 MM HIGH RAILING
 - 28. 1000 MM HIGH RAILING
 - 29. 1000 MM HIGH RAILING
 - 30. 1000 MM HIGH RAILING
 - 31. 1000 MM HIGH RAILING
 - 32. 1000 MM HIGH RAILING
 - 33. 1000 MM HIGH RAILING
 - 34. 1000 MM HIGH RAILING
 - 35. 1000 MM HIGH RAILING
 - 36. 1000 MM HIGH RAILING
 - 37. 1000 MM HIGH RAILING
 - 38. 1000 MM HIGH RAILING
 - 39. 1000 MM HIGH RAILING
 - 40. 1000 MM HIGH RAILING
 - 41. 1000 MM HIGH RAILING
 - 42. 1000 MM HIGH RAILING
 - 43. 1000 MM HIGH RAILING
 - 44. 1000 MM HIGH RAILING
 - 45. 1000 MM HIGH RAILING
 - 46. 1000 MM HIGH RAILING
 - 47. 1000 MM HIGH RAILING
 - 48. 1000 MM HIGH RAILING
 - 49. 1000 MM HIGH RAILING
 - 50. 1000 MM HIGH RAILING
 - 51. 1000 MM HIGH RAILING
 - 52. 1000 MM HIGH RAILING
 - 53. 1000 MM HIGH RAILING
 - 54. 1000 MM HIGH RAILING
 - 55. 1000 MM HIGH RAILING
 - 56. 1000 MM HIGH RAILING
 - 57. 1000 MM HIGH RAILING
 - 58. 1000 MM HIGH RAILING
 - 59. 1000 MM HIGH RAILING
 - 60. 1000 MM HIGH RAILING
 - 61. 1000 MM HIGH RAILING
 - 62. 1000 MM HIGH RAILING
 - 63. 1000 MM HIGH RAILING
 - 64. 1000 MM HIGH RAILING
 - 65. 1000 MM HIGH RAILING
 - 66. 1000 MM HIGH RAILING
 - 67. 1000 MM HIGH RAILING
 - 68. 1000 MM HIGH RAILING
 - 69. 1000 MM HIGH RAILING
 - 70. 1000 MM HIGH RAILING
 - 71. 1000 MM HIGH RAILING
 - 72. 1000 MM HIGH RAILING
 - 73. 1000 MM HIGH RAILING
 - 74. 1000 MM HIGH RAILING
 - 75. 1000 MM HIGH RAILING
 - 76. 1000 MM HIGH RAILING
 - 77. 1000 MM HIGH RAILING
 - 78. 1000 MM HIGH RAILING
 - 79. 1000 MM HIGH RAILING
 - 80. 1000 MM HIGH RAILING
 - 81. 1000 MM HIGH RAILING
 - 82. 1000 MM HIGH RAILING
 - 83. 1000 MM HIGH RAILING
 - 84. 1000 MM HIGH RAILING
 - 85. 1000 MM HIGH RAILING
 - 86. 1000 MM HIGH RAILING
 - 87. 1000 MM HIGH RAILING
 - 88. 1000 MM HIGH RAILING
 - 89. 1000 MM HIGH RAILING
 - 90. 1000 MM HIGH RAILING
 - 91. 1000 MM HIGH RAILING
 - 92. 1000 MM HIGH RAILING
 - 93. 1000 MM HIGH RAILING
 - 94. 1000 MM HIGH RAILING
 - 95. 1000 MM HIGH RAILING
 - 96. 1000 MM HIGH RAILING
 - 97. 1000 MM HIGH RAILING
 - 98. 1000 MM HIGH RAILING
 - 99. 1000 MM HIGH RAILING
 - 100. 1000 MM HIGH RAILING

TOWER - 4.1 TYPICAL FLOOR PLAN (F.A.R. CALCULATION)

LEGEND	LENGTH (m)	WIDTH (m)	Nos.	AREA (sqm)
ADDITIONS				
A	23.300	11.400	1	266.100
B	9.300	9.100	2	170.170
C	12.300	8.400	2	205.100
D	14.300	8.100	1	115.910
E	5.400	11.400	1	61.560
F	4.000	3.700	1	14.800
G	4.000	3.400	1	13.600
H	2.000	1.400	2	2.800
I	3.000	3.500	2	21.000
J	2.100	0.250	4	2.100
K	2.100	0.250	4	2.100
L	2.100	0.250	4	2.100
M	0.900	0.300	24	2.160
N	1.100	0.400	4	1.760
O	5.500	1.750	2	19.250
P	5.400	2.400	2	26.160
Q	1.800	0.500	2	18.000
R	1.500	0.500	2	15.000
S	3.500	1.800	2	12.600
T	0.900	0.250	1	0.225
U	0.900	0.250	1	0.225
V	0.900	0.250	1	0.225
W	0.900	0.250	1	0.225
X	0.900	0.250	1	0.225
Y	0.900	0.250	1	0.225
Z	0.900	0.250	1	0.225
AA	0.900	0.250	1	0.225
AB	0.900	0.250	1	0.225
AC	0.900	0.250	1	0.225
AD	0.900	0.250	1	0.225
AE	0.900	0.250	1	0.225
AF	0.900	0.250	1	0.225
AG	0.900	0.250	1	0.225
AH	0.900	0.250	1	0.225
AI	0.900	0.250	1	0.225
AJ	0.900	0.250	1	0.225
AK	0.900	0.250	1	0.225
AL	0.900	0.250	1	0.225
AM	0.900	0.250	1	0.225
AN	0.900	0.250	1	0.225
AO	0.900	0.250	1	0.225
AP	0.900	0.250	1	0.225
AQ	0.900	0.250	1	0.225
AR	0.900	0.250	1	0.225
AS	0.900	0.250	1	0.225
AT	0.900	0.250	1	0.225
AU	0.900	0.250	1	0.225
AV	0.900	0.250	1	0.225
AW	0.900	0.250	1	0.225
AX	0.900	0.250	1	0.225
AY	0.900	0.250	1	0.225
AZ	0.900	0.250	1	0.225
BA	0.900	0.250	1	0.225
BB	0.900	0.250	1	0.225
BC	0.900	0.250	1	0.225
BD	0.900	0.250	1	0.225
BE	0.900	0.250	1	0.225
BF	0.900	0.250	1	0.225
BG	0.900	0.250	1	0.225
BH	0.900	0.250	1	0.225
BI	0.900	0.250	1	0.225
BJ	0.900	0.250	1	0.225
BK	0.900	0.250	1	0.225
BL	0.900	0.250	1	0.225
BM	0.900	0.250	1	0.225
BN	0.900	0.250	1	0.225
BO	0.900	0.250	1	0.225
BP	0.900	0.250	1	0.225
BQ	0.900	0.250	1	0.225
BR	0.900	0.250	1	0.225
BS	0.900	0.250	1	0.225
BT	0.900	0.250	1	0.225
BU	0.900	0.250	1	0.225
BV	0.900	0.250	1	0.225
BW	0.900	0.250	1	0.225
BX	0.900	0.250	1	0.225
BY	0.900	0.250	1	0.225
BZ	0.900	0.250	1	0.225
CA	0.900	0.250	1	0.225
CB	0.900	0.250	1	0.225
CC	0.900	0.250	1	0.225
CD	0.900	0.250	1	0.225
CE	0.900	0.250	1	0.225
CF	0.900	0.250	1	0.225
CG	0.900	0.250	1	0.225
CH	0.900	0.250	1	0.225
CI	0.900	0.250	1	0.225
CJ	0.900	0.250	1	0.225
CK	0.900	0.250	1	0.225
CL	0.900	0.250	1	0.225
CM	0.900	0.250	1	0.225
CN	0.900	0.250	1	0.225
CO	0.900	0.250	1	0.225
CP	0.900	0.250	1	0.225
CQ	0.900	0.250	1	0.225
CR	0.900	0.250	1	0.225
CS	0.900	0.250	1	0.225
CT	0.900	0.250	1	0.225
CU	0.900	0.250	1	0.225
CV	0.900	0.250	1	0.225
CW	0.900	0.250	1	0.225
CX	0.900	0.250	1	0.225
CY	0.900	0.250	1	0.225
CZ	0.900	0.250	1	0.225
DA	0.900	0.250	1	0.225
DB	0.900	0.250	1	0.225
DC	0.900	0.250	1	0.225
DD	0.900	0.250	1	0.225
DE	0.900	0.250	1	0.225
DF	0.900	0.250	1	0.225
DG	0.900	0.250	1	0.225
DH	0.900	0.250	1	0.225
DI	0.900	0.250	1	0.225
DJ	0.900	0.250	1	0.225
DK	0.900	0.250	1	0.225
DL	0.900	0.250	1	0.225
DM	0.900	0.250	1	0.225
DN	0.900	0.250	1	0.225
DO	0.900	0.250	1	0.225
DP	0.900	0.250	1	0.225
DQ	0.900	0.250	1	0.225
DR	0.900	0.250	1	0.225
DS	0.900	0.250	1	0.225
DT	0.900	0.250	1	0.225
DU	0.900	0.250	1	0.225
DV	0.900	0.250	1	0.225
DW	0.900	0.250	1	0.225
DX	0.900	0.250	1	0.225
DY	0.900	0.250	1	0.225
DZ	0.900	0.250	1	0.225
EA	0.900	0.250	1	0.225
EB	0.900	0.250	1	0.225
EC	0.900	0.250	1	0.225
ED	0.900	0.250	1	0.225
EE	0.900	0.250	1	0.225
EF	0.900	0.250	1	0.225
EG	0.900	0.250	1	0.225
EH	0.900	0.250	1	0.225
EI	0.900	0.250	1	0.225
EJ	0.900	0.250	1	0.225
EK	0.900	0.250	1	0.225
EL	0.900	0.250	1	0.225
EM	0.900	0.250	1	0.225
EN	0.900	0.250	1	0.225
EO	0.900	0.250	1	0.225
EP	0.900	0.250	1	0.225
EQ	0.900	0.250	1	0.225
ER	0.900	0.250	1	0.225
ES	0.900	0.250	1	0.225
ET	0.900	0.250	1	0.225
EU	0.900	0.250	1	0.225
EV	0.900	0.250	1	0.225
EW	0.900	0.250	1	0.225
EX	0.900	0.250	1	0.225
EY	0.900	0.250	1	0.225
EZ	0.900	0.250	1	0.225
FA	0.900	0.250	1	0.225
FB	0.900	0.250	1	0.225
FC	0.900	0.250	1	0.225
FD	0.900	0.250	1	0.225
FE	0.900	0.250	1	0.225
FF	0.900	0.250	1	0.225
FG	0.900	0.250	1	0.225
FH	0.900	0.250	1	0.225
FI	0.900	0.250	1	0.225
FJ	0.900	0.250	1	0.225
FK	0.900	0.250	1	0.225
FL	0.900	0.250	1	0.225
FM	0.900	0.250	1	0.225
FN	0.900	0.250	1	0.225
FO	0.900	0.250	1	0.225
FP	0.900	0.250	1	0.225
FO	0.900	0.250	1	0.225
FP	0.900	0.250	1	0.225
FO	0.900	0.250	1	0.225
FP	0.900	0.250	1	0.225
FO	0.900	0.250	1	0.225
FP	0.900	0.250	1	0.225
FO	0.900	0.250	1	0.225</