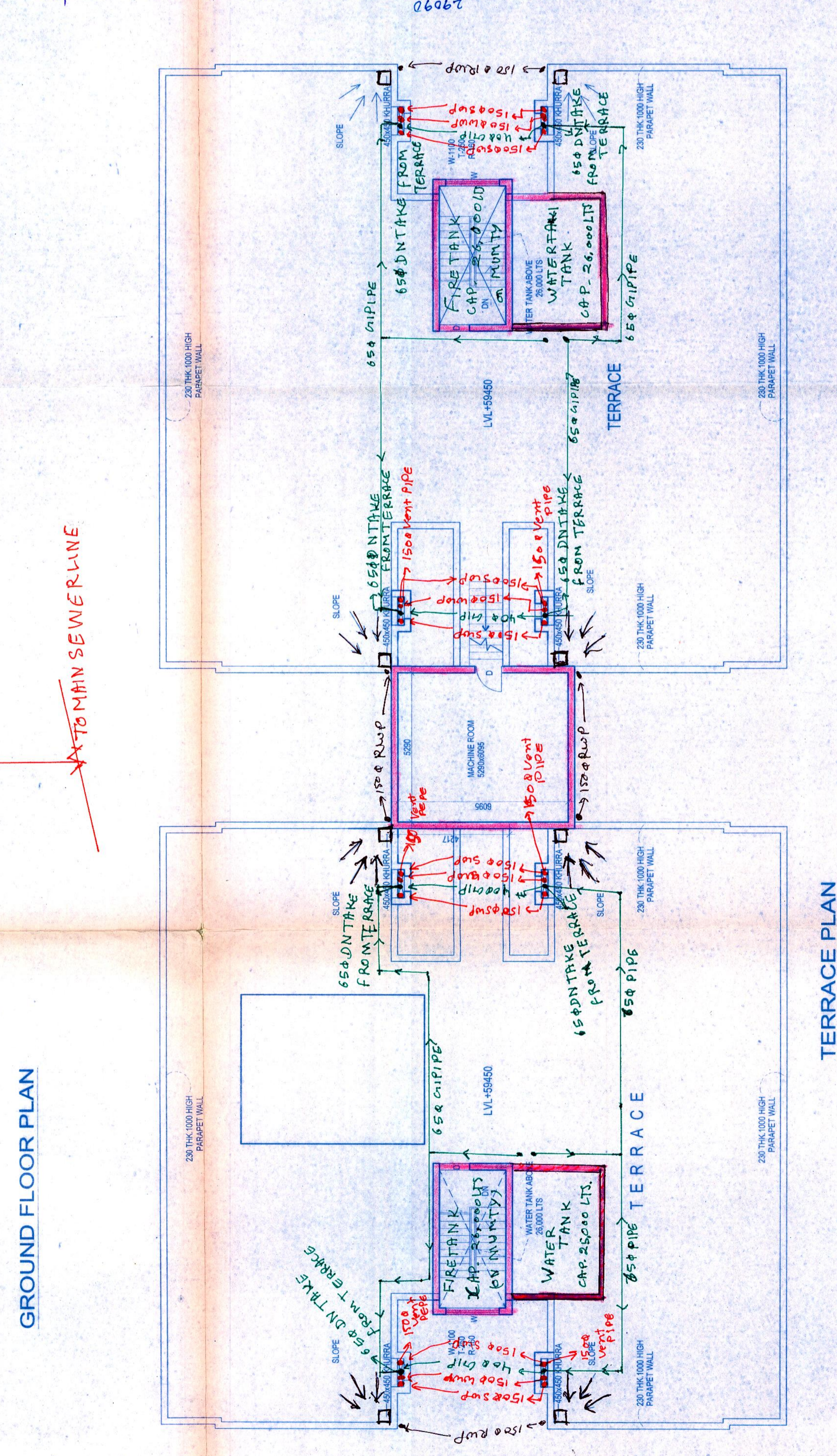
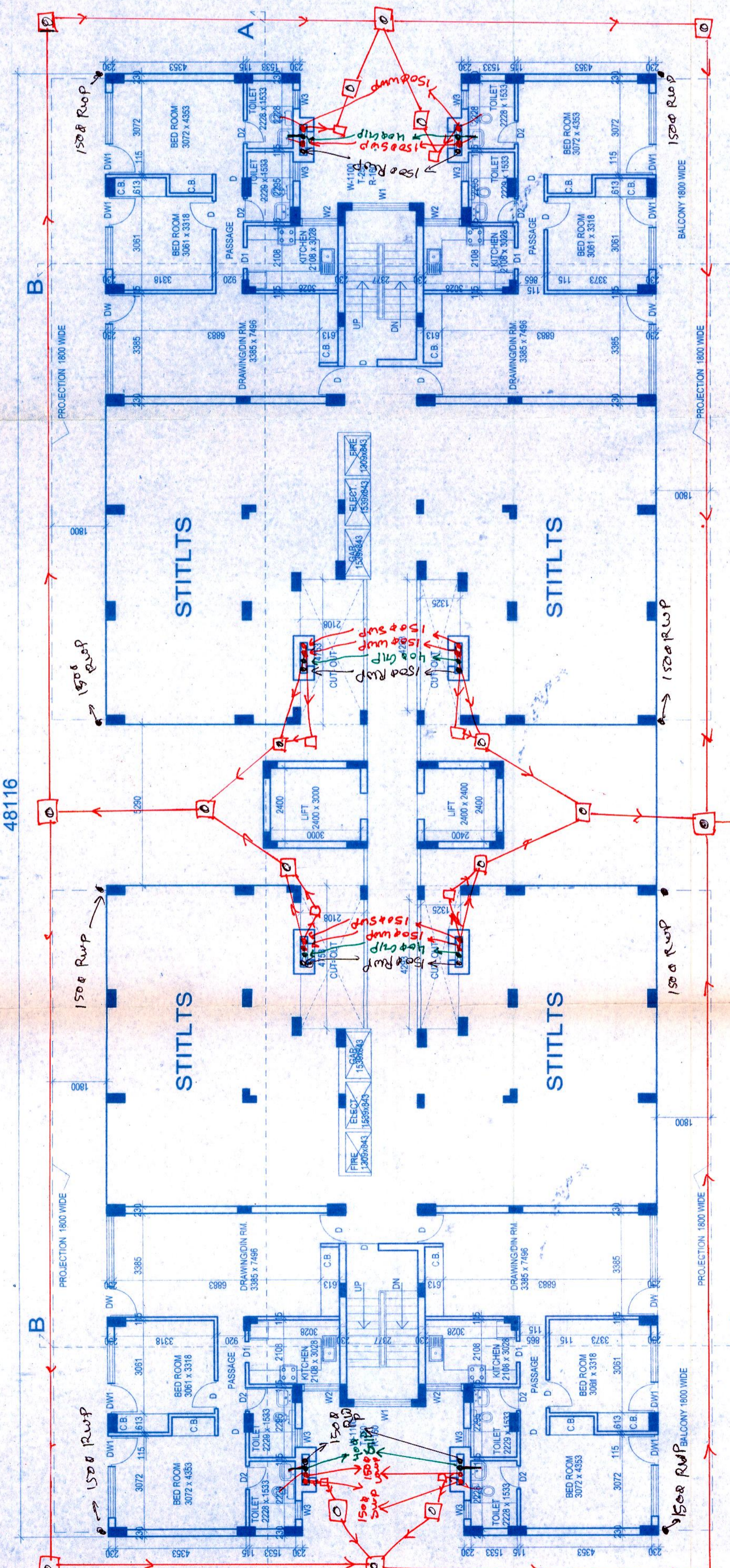
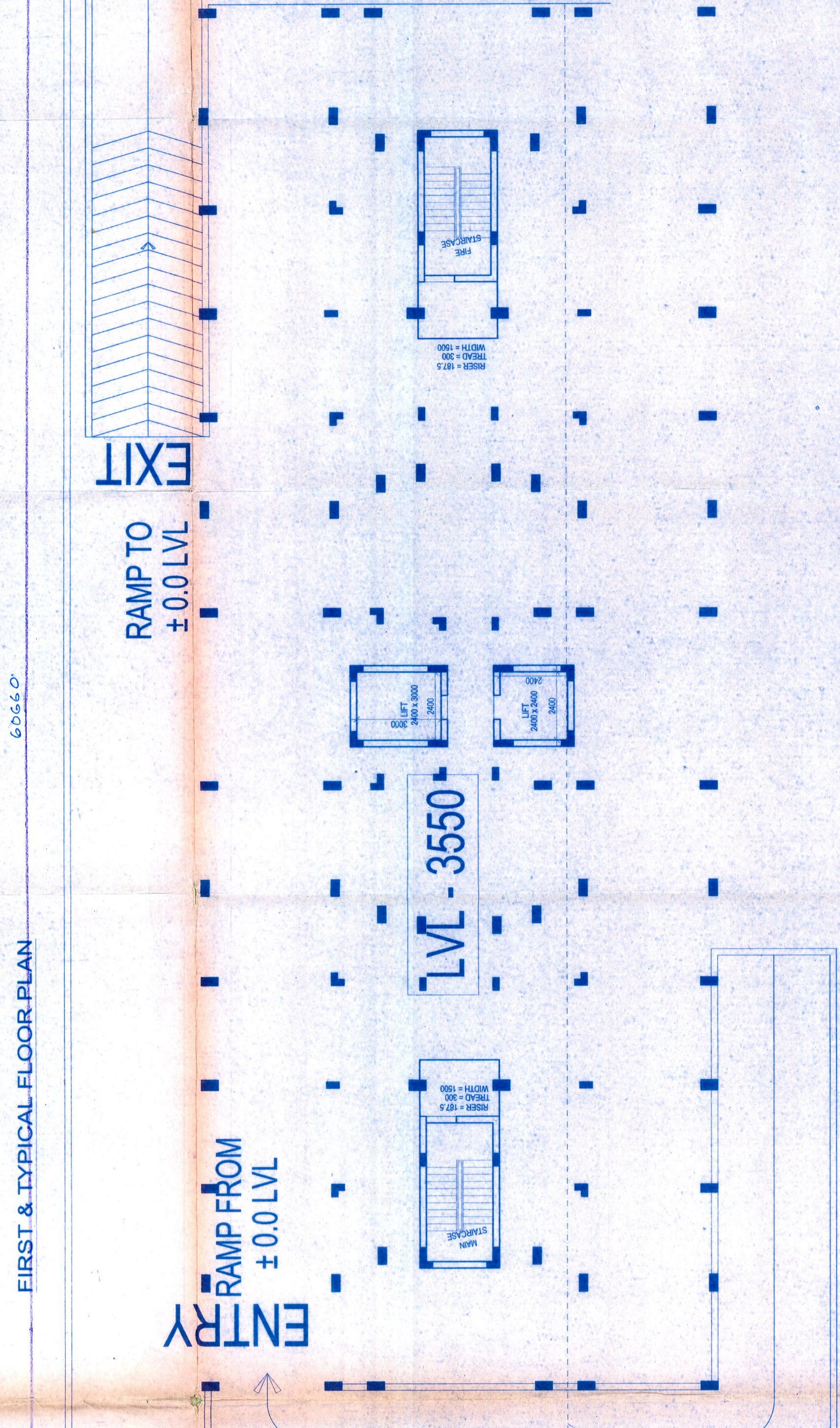
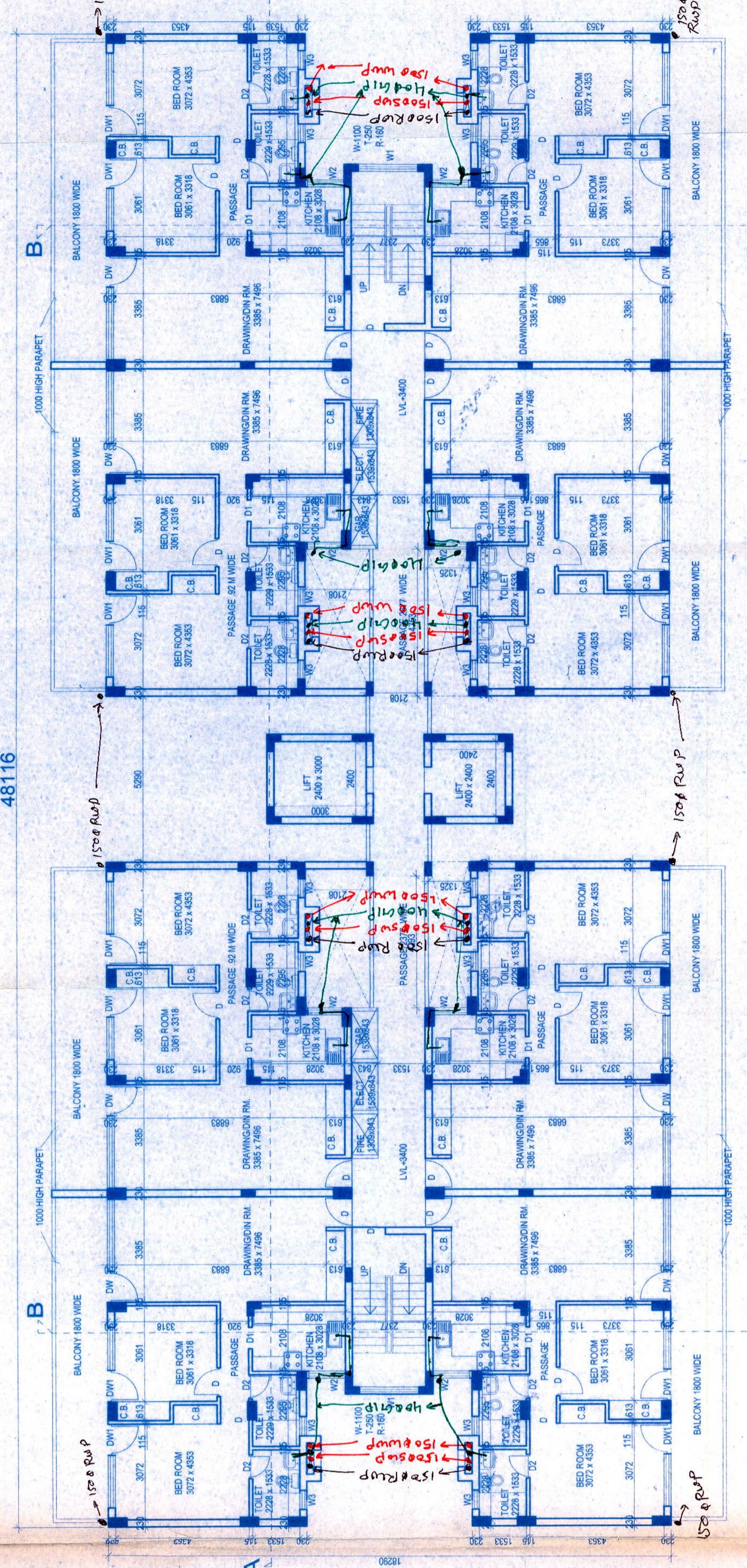
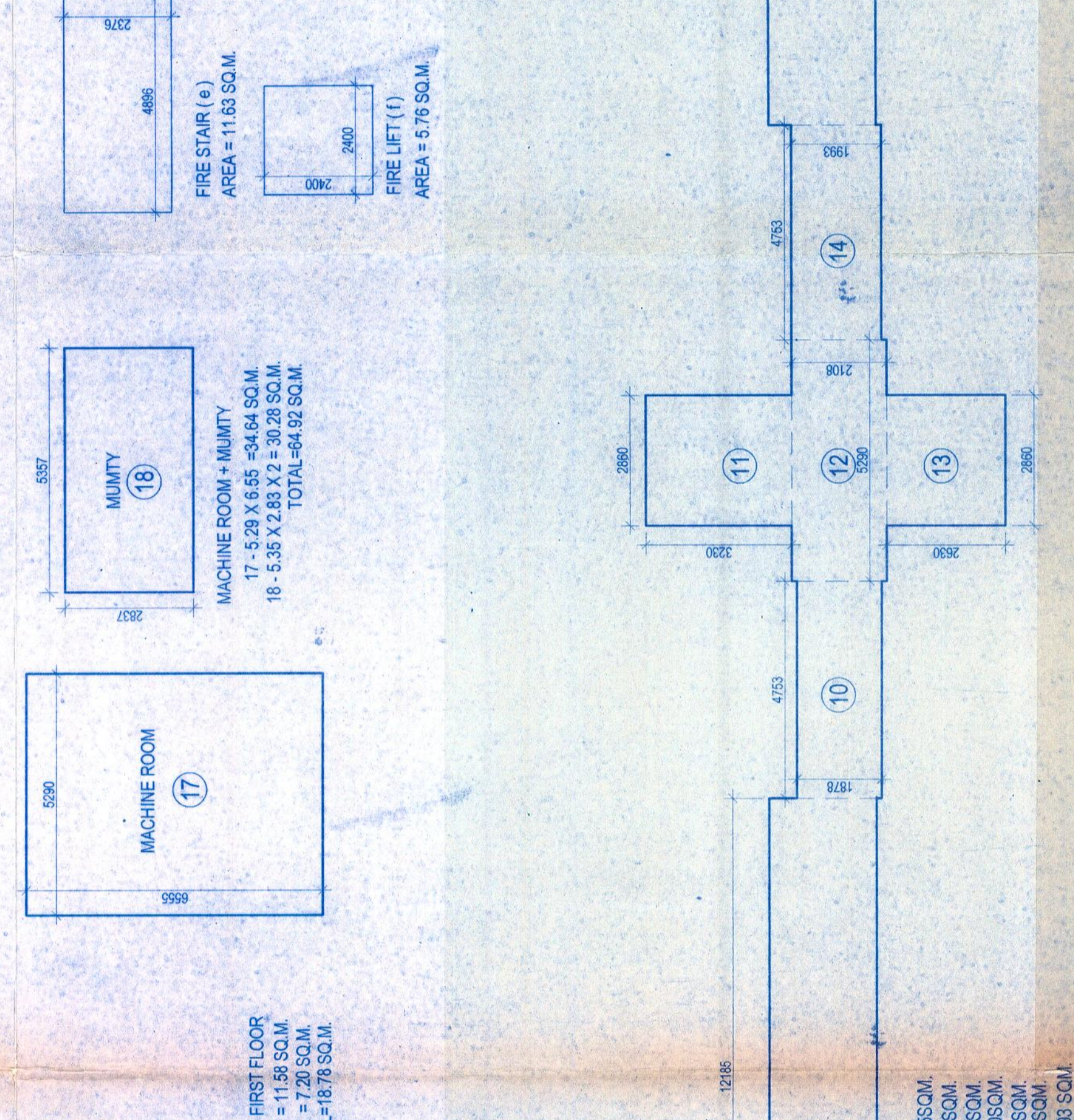
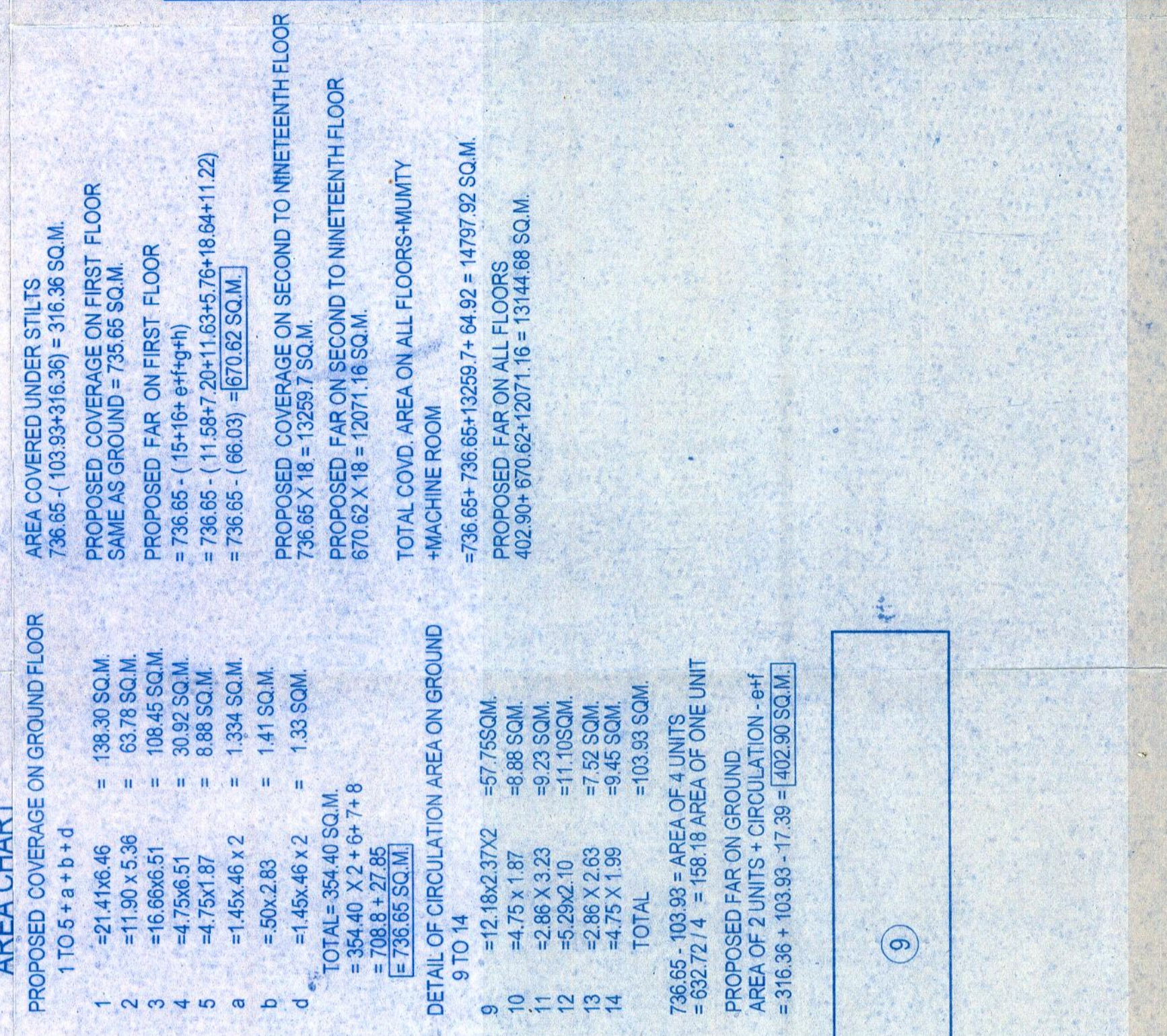


SACTIONED
To be used in accordance with
MUMBAI MUNICIPALITY ACT, 1932
MUMBAI MUNICIPALITY NO. 10322 D-1113-1



SECOND BASEMENT AS / FIRST BASEMENT
PLAN AT FIRST BASEMENT LVL



NO.	DESCRIPTION	AREA (SQ.M)
1	STAIR - LIFT ON FIRST FLOOR	16.330 x 2.24 = 36.58 SQ.M
2	STAIR - LIFT ON FIRST FLOOR	16.330 x 2.24 = 36.58 SQ.M
3	STAIR - LIFT ON FIRST FLOOR	16.330 x 2.24 = 36.58 SQ.M
4	STAIR - LIFT ON FIRST FLOOR	16.330 x 2.24 = 36.58 SQ.M
5	STAIR - LIFT ON FIRST FLOOR	16.330 x 2.24 = 36.58 SQ.M
6	STAIR - LIFT ON FIRST FLOOR	16.330 x 2.24 = 36.58 SQ.M
7	STAIR - LIFT ON FIRST FLOOR	16.330 x 2.24 = 36.58 SQ.M
8	STAIR - LIFT ON FIRST FLOOR	16.330 x 2.24 = 36.58 SQ.M
9	STAIR - LIFT ON FIRST FLOOR	16.330 x 2.24 = 36.58 SQ.M
10	STAIR - LIFT ON FIRST FLOOR	16.330 x 2.24 = 36.58 SQ.M
11	STAIR - LIFT ON FIRST FLOOR	16.330 x 2.24 = 36.58 SQ.M
12	STAIR - LIFT ON FIRST FLOOR	16.330 x 2.24 = 36.58 SQ.M
13	STAIR - LIFT ON FIRST FLOOR	16.330 x 2.24 = 36.58 SQ.M
14	STAIR - LIFT ON FIRST FLOOR	16.330 x 2.24 = 36.58 SQ.M
15	STAIR - LIFT ON FIRST FLOOR	16.330 x 2.24 = 36.58 SQ.M
16	STAIR - LIFT ON FIRST FLOOR	16.330 x 2.24 = 36.58 SQ.M
17	STAIR - LIFT ON FIRST FLOOR	16.330 x 2.24 = 36.58 SQ.M
18	STAIR - LIFT ON FIRST FLOOR	16.330 x 2.24 = 36.58 SQ.M
19	STAIR - LIFT ON FIRST FLOOR	16.330 x 2.24 = 36.58 SQ.M
20	STAIR - LIFT ON FIRST FLOOR	16.330 x 2.24 = 36.58 SQ.M
21	STAIR - LIFT ON FIRST FLOOR	16.330 x 2.24 = 36.58 SQ.M
22	STAIR - LIFT ON FIRST FLOOR	16.330 x 2.24 = 36.58 SQ.M
23	STAIR - LIFT ON FIRST FLOOR	16.330 x 2.24 = 36.58 SQ.M
24	STAIR - LIFT ON FIRST FLOOR	16.330 x 2.24 = 36.58 SQ.M
25	STAIR - LIFT ON FIRST FLOOR	16.330 x 2.24 = 36.58 SQ.M
26	STAIR - LIFT ON FIRST FLOOR	16.330 x 2.24 = 36.58 SQ.M
27	STAIR - LIFT ON FIRST FLOOR	16.330 x 2.24 = 36.58 SQ.M
28	STAIR - LIFT ON FIRST FLOOR	16.330 x 2.24 = 36.58 SQ.M
29	STAIR - LIFT ON FIRST FLOOR	16.330 x 2.24 = 36.58 SQ.M
30	STAIR - LIFT ON FIRST FLOOR	16.330 x 2.24 = 36.58 SQ.M