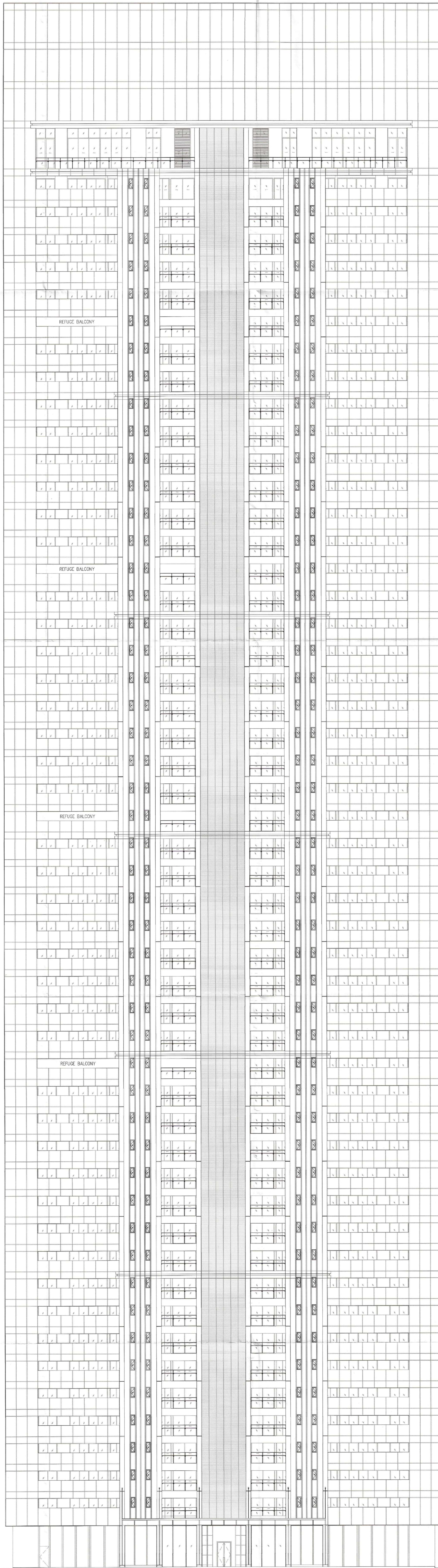


Note :-

1. BUILDING WILL BE DESIGNED (STRUCTURES) AS PER RELEVANT IS CODES FOR EARTH QUAKE RESISTANCE.



TOP FACADE LEVEL	LVL=194530
SERVICE LIFT MR. ROOF	LVL=190950
SERVICE LIFT MACHINE ROOM	LVL=186350
MEP ROOF LEVEL	LVL=181750
LIFT MACHINE ROOM	LVL=177150
TERRACE FLOOR	LVL=172550
50TH FLOOR (PENHOUSE)	LVL=171100
49TH FLOOR	LVL=170250
48TH FLOOR	LVL=169400
47TH FLOOR	LVL=168550
46TH FLOOR	LVL=167700
45TH FLOOR	LVL=166850
45TH FLOOR (REFUGE)	LVL=166000
43RD FLOOR	LVL=164650
42ND FLOOR	LVL=163800
41ST FLOOR	LVL=162950
40TH FLOOR	LVL=162100
39TH FLOOR	LVL=161250
38TH FLOOR	LVL=160400
37TH FLOOR	LVL=159550
36TH FLOOR	LVL=158700
35TH FLOOR	LVL=157850
35TH FLOOR (REFUGE)	LVL=157000
34TH FLOOR	LVL=156150
33RD FLOOR	LVL=155300
32ND FLOOR	LVL=154450
31ST FLOOR	LVL=153600
30TH FLOOR	LVL=152750
29TH FLOOR	LVL=151900
28TH FLOOR	LVL=151050
27TH FLOOR	LVL=150200
26TH FLOOR	LVL=149350
25TH FLOOR	LVL=148500
24TH FLOOR	LVL=147650
23TH FLOOR	LVL=146800
22TH FLOOR	LVL=145950
21TH FLOOR	LVL=145100
20TH FLOOR	LVL=144250
19TH FLOOR	LVL=143400
18TH FLOOR	LVL=142550
17TH FLOOR (REFUGE)	LVL=141700
16TH FLOOR	LVL=140850
15TH FLOOR	LVL=140000
14TH FLOOR	LVL=139150
13TH FLOOR	LVL=138300
12TH FLOOR	LVL=137450
11TH FLOOR	LVL=136600
10TH FLOOR	LVL=135750
9TH FLOOR	LVL=134900
8TH FLOOR	LVL=134050
7TH FLOOR	LVL=133200
6TH FLOOR	LVL=132350
5TH FLOOR	LVL=131500
4TH FLOOR	LVL=130650
3RD FLOOR	LVL=129800
2ND FLOOR	LVL=128950
1ST FLOOR	LVL=128100
GROUND FLOOR (BRI)	LVL=127250
EXTERNAL ROAD LVL	LVL=0

PROJECT

PROPOSED BUILDING PLANS OF PHASE-VIII (PRIVANA-NORTH) FALLING UNDER RESIDENTIAL COLONY UNDER NEW INTEGRATED LICENSING POLICY (NILP) DATED 11.05.2022 ON LAND MEASURING 116.29625 ACRES (LICENCE NO. 219 OF 2023 DATED 25-10-23.) (AN AREA MEASURING 103.05625 ACRES MIGRATION FROM LICENCE NO. 27 OF 2012 DATED 02.04.2012 AND 13.24 ACRES AS FRESH AS FRESH APPLIED AREA) IN SECTOR -76 & 77, GURUGRAM MANESAR URBAN COMPLEX BEING DEVELOPED BY DLF LTD. IN COLLABORATION WITH LAND OWNERS AND IT'S ASSOCIATE COMPANIES

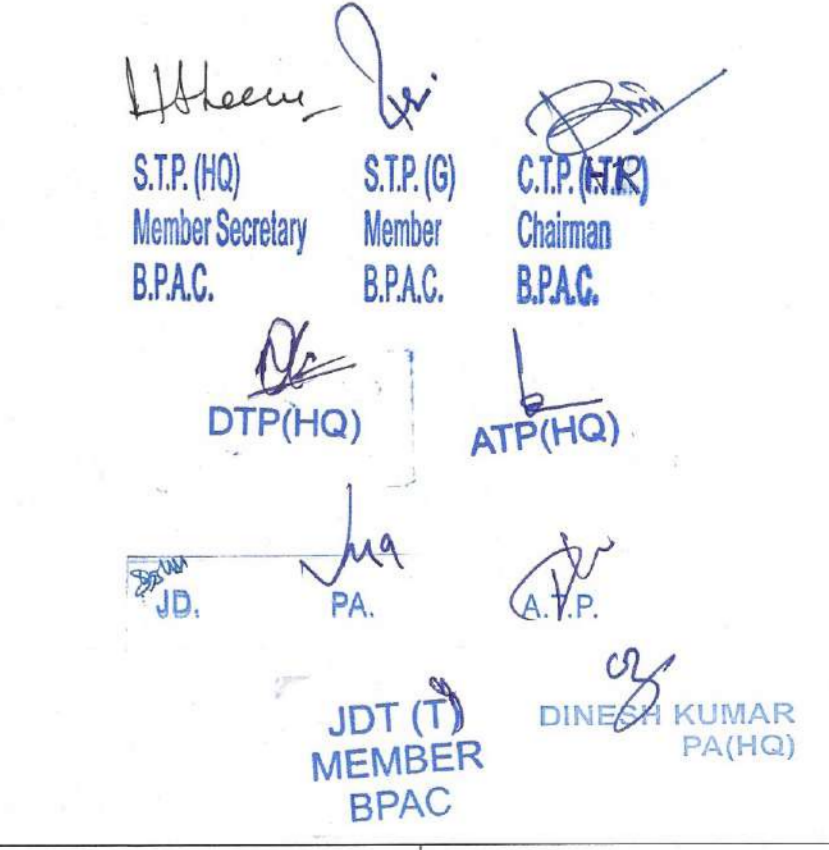
DESIGN ARCHITECT

ARCHITECTS:-

DESIGN FORUM INTERNATIONAL
 Address : K-47 , KAILASH COLONY , NEW DELHI - 48
 Phone : 011-46556600,46556601 , FAX - 46556601
 Website: www.designforuminternational.com

ASSOCIATE ARCHITECTS


RISMS ARCHITECTS
 RISMS ARCHITECTS PVT. LTD.
 69,Nora Niwas Bhawani Kunj (Behind D2), Vasant Kunj, New Delhi-110070.
 Tel.: 011-26898616,26898617
 www.rsms-arch.com


 S.T.P. (H/O) Member Secretary B.P.A.C.
 S.T.P. (M) Member B.P.A.C.
 C.P. (M) Chairman B.P.A.C.
 D.T.P. (H/O) A.T.P. (H/O)
 J.D. P.A. J.P.
 J.D.T. (M) MEMBER B.P.A.C.
 D.H.R. (M) MANISH KUMAR (P.A. (H/O))
 ARCHITECT'S SEAL & SIGNATURE: **MANISH KUMAR CA/2008/42027**
 OWNER'S SEAL & SIGNATURE: **DLF Limited** Authorised Signatory

ELEVATION - 1 TOWER - A,C,E
 SANCTIONED TO BE READ WITH THE OFFICE NOTIFICATION NO. 16269 DATED: 02/07/2025

FEB - 2025 Scale : 1:150 Drawing Title: ELEVATION-01 TOWER-A,C & E Drawing No: EA-01 02-11042025