

Demarcation Plan of LOI granted land [LC-1531-PA(SS) 2017 /16538-43 dated 13-07-2017] for the land measuring 5.9625 acres situated in village- Badoli, for affordable housing in sector-75, Faridabad - Iris Plaza Pvt. Ltd.

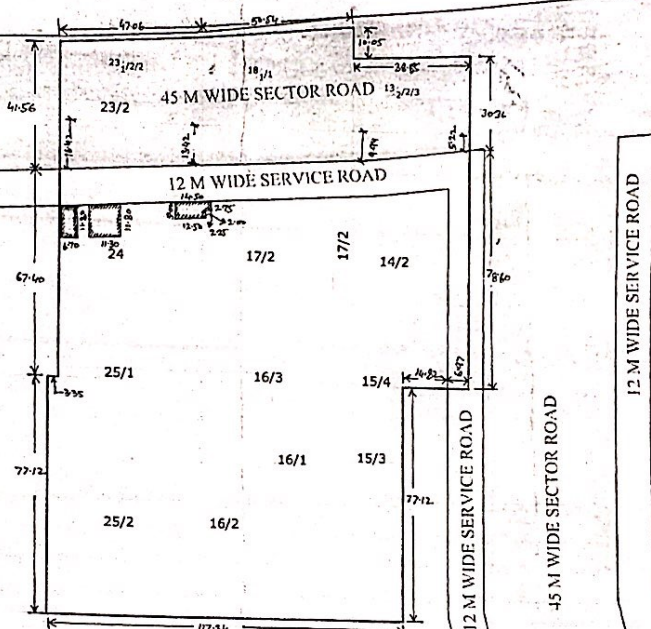


AGRA CANAL

PRODUCED BY AN AUTODESK EDUCATIONAL PRODUCT

Schedule of LOI granted Land

Sr. No.	Rec. No.	Killa No.	Area K - H
1.	45	134/2/3	1 - 17
2.	45	14/2	6 - 3
3.	45	15/3	2 - 11
4.	45	15/4	0 - 4
5.	45	16/1	5 - 7
6.	45	16/2	2 - 6
7.	45	16/3	0 - 7
8.	45	17/1	1 - 1
9.	45	17/2	6 - 19
10.	45	18/1/1	3 - 2
11.	45	23/2/2	1 - 17
12.	45	23/2	0 - 12
13.	45	24	7 - 9
14.	45	25/1	0 - 6
15.	45	25/2	7 - 13
Total			47 - 14



1. Area of LOI granted Land falling under 45 meter wide sector road = 5333.47 Sq.Mt.

1. Area of LOI granted Land falling under 12 meter wide service road = 2095.57 Sq.Mt.

Signature of Owner-

Iris Plaza Private Limited

[Signature]

JD

Signature of Architect-

[Signature]

PA

Verified at site

JE

ATP

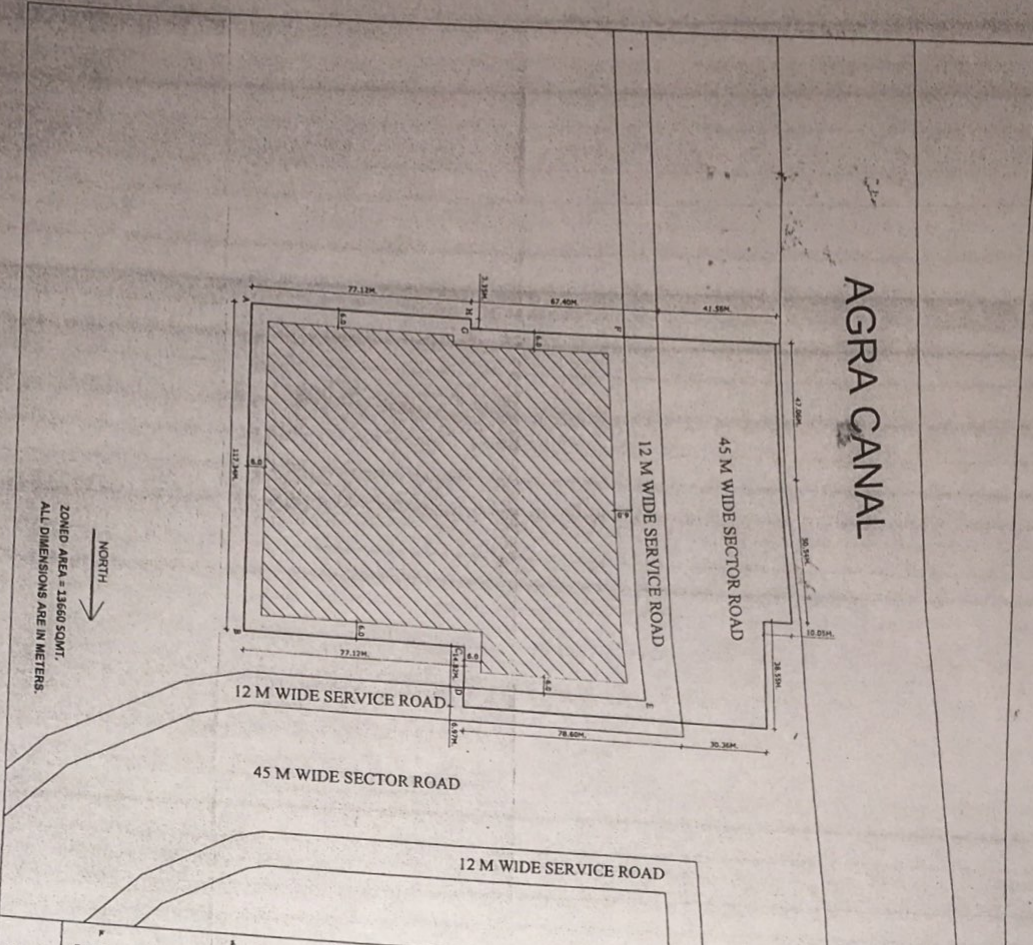
DTP

Iris Plaza Pvt. Ltd.

[Signature]
Signatory

Demarcation Plot

AGRA CANNAL



NORTH
ZONED AREA = 13660 SQM.
ALL DIMENSIONS ARE IN METERS.

PROVISION	TYPE AND AREA	UNIT PRICE	TOTAL COST
Open areas	Open areas		
Open parking	Open parking		
Roofing	Roofing		

- 1. The building area of the project proposed to be situated on an area measuring 5.9535 acres and measuring 1124.11 Sq. Meters.
- 2. The total area of the project is 5.9535 acres and measuring 1124.11 Sq. Meters.
- 3. The project is situated in the area measuring 5.9535 acres and measuring 1124.11 Sq. Meters.
- 4. The project is situated in the area measuring 5.9535 acres and measuring 1124.11 Sq. Meters.
- 5. The project is situated in the area measuring 5.9535 acres and measuring 1124.11 Sq. Meters.
- 6. The project is situated in the area measuring 5.9535 acres and measuring 1124.11 Sq. Meters.
- 7. The project is situated in the area measuring 5.9535 acres and measuring 1124.11 Sq. Meters.
- 8. The project is situated in the area measuring 5.9535 acres and measuring 1124.11 Sq. Meters.
- 9. The project is situated in the area measuring 5.9535 acres and measuring 1124.11 Sq. Meters.
- 10. The project is situated in the area measuring 5.9535 acres and measuring 1124.11 Sq. Meters.
- 11. The project is situated in the area measuring 5.9535 acres and measuring 1124.11 Sq. Meters.
- 12. The project is situated in the area measuring 5.9535 acres and measuring 1124.11 Sq. Meters.
- 13. The project is situated in the area measuring 5.9535 acres and measuring 1124.11 Sq. Meters.
- 14. The project is situated in the area measuring 5.9535 acres and measuring 1124.11 Sq. Meters.
- 15. The project is situated in the area measuring 5.9535 acres and measuring 1124.11 Sq. Meters.
- 16. The project is situated in the area measuring 5.9535 acres and measuring 1124.11 Sq. Meters.
- 17. The project is situated in the area measuring 5.9535 acres and measuring 1124.11 Sq. Meters.
- 18. The project is situated in the area measuring 5.9535 acres and measuring 1124.11 Sq. Meters.
- 19. The project is situated in the area measuring 5.9535 acres and measuring 1124.11 Sq. Meters.
- 20. The project is situated in the area measuring 5.9535 acres and measuring 1124.11 Sq. Meters.
- 21. The project is situated in the area measuring 5.9535 acres and measuring 1124.11 Sq. Meters.
- 22. The project is situated in the area measuring 5.9535 acres and measuring 1124.11 Sq. Meters.
- 23. The project is situated in the area measuring 5.9535 acres and measuring 1124.11 Sq. Meters.
- 24. The project is situated in the area measuring 5.9535 acres and measuring 1124.11 Sq. Meters.
- 25. The project is situated in the area measuring 5.9535 acres and measuring 1124.11 Sq. Meters.
- 26. The project is situated in the area measuring 5.9535 acres and measuring 1124.11 Sq. Meters.
- 27. The project is situated in the area measuring 5.9535 acres and measuring 1124.11 Sq. Meters.
- 28. The project is situated in the area measuring 5.9535 acres and measuring 1124.11 Sq. Meters.
- 29. The project is situated in the area measuring 5.9535 acres and measuring 1124.11 Sq. Meters.
- 30. The project is situated in the area measuring 5.9535 acres and measuring 1124.11 Sq. Meters.
- 31. The project is situated in the area measuring 5.9535 acres and measuring 1124.11 Sq. Meters.
- 32. The project is situated in the area measuring 5.9535 acres and measuring 1124.11 Sq. Meters.
- 33. The project is situated in the area measuring 5.9535 acres and measuring 1124.11 Sq. Meters.
- 34. The project is situated in the area measuring 5.9535 acres and measuring 1124.11 Sq. Meters.
- 35. The project is situated in the area measuring 5.9535 acres and measuring 1124.11 Sq. Meters.
- 36. The project is situated in the area measuring 5.9535 acres and measuring 1124.11 Sq. Meters.
- 37. The project is situated in the area measuring 5.9535 acres and measuring 1124.11 Sq. Meters.
- 38. The project is situated in the area measuring 5.9535 acres and measuring 1124.11 Sq. Meters.
- 39. The project is situated in the area measuring 5.9535 acres and measuring 1124.11 Sq. Meters.
- 40. The project is situated in the area measuring 5.9535 acres and measuring 1124.11 Sq. Meters.
- 41. The project is situated in the area measuring 5.9535 acres and measuring 1124.11 Sq. Meters.
- 42. The project is situated in the area measuring 5.9535 acres and measuring 1124.11 Sq. Meters.
- 43. The project is situated in the area measuring 5.9535 acres and measuring 1124.11 Sq. Meters.
- 44. The project is situated in the area measuring 5.9535 acres and measuring 1124.11 Sq. Meters.
- 45. The project is situated in the area measuring 5.9535 acres and measuring 1124.11 Sq. Meters.
- 46. The project is situated in the area measuring 5.9535 acres and measuring 1124.11 Sq. Meters.
- 47. The project is situated in the area measuring 5.9535 acres and measuring 1124.11 Sq. Meters.
- 48. The project is situated in the area measuring 5.9535 acres and measuring 1124.11 Sq. Meters.
- 49. The project is situated in the area measuring 5.9535 acres and measuring 1124.11 Sq. Meters.
- 50. The project is situated in the area measuring 5.9535 acres and measuring 1124.11 Sq. Meters.

MRS PUSPA PVT. LTD. (15/23)
CIVIL ENGINEER
ARCHITECT
STRUCTURAL ENGINEER
L.S. SATHYANARAYAN (M.S.)
DIP (M)

For Iris Plaza Pvt. Ltd.