

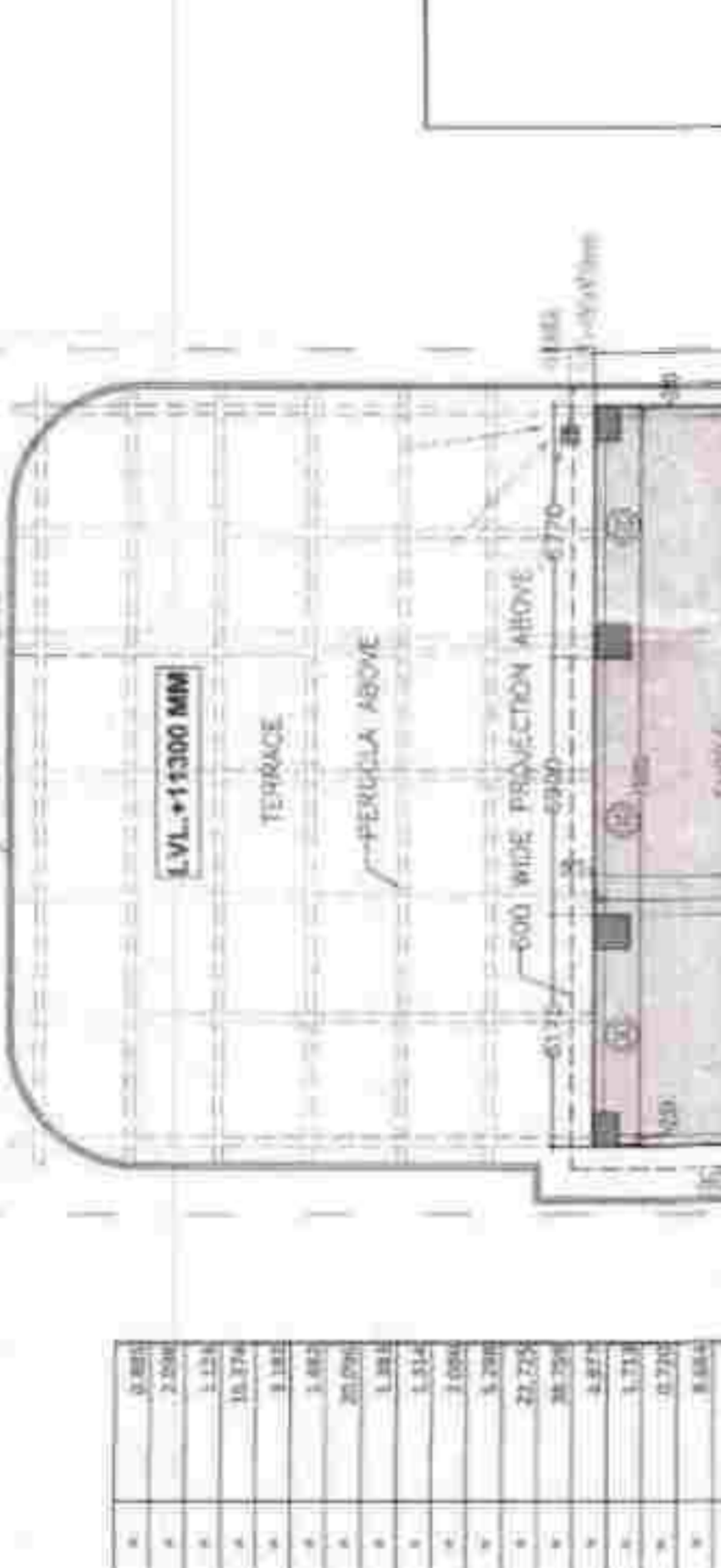
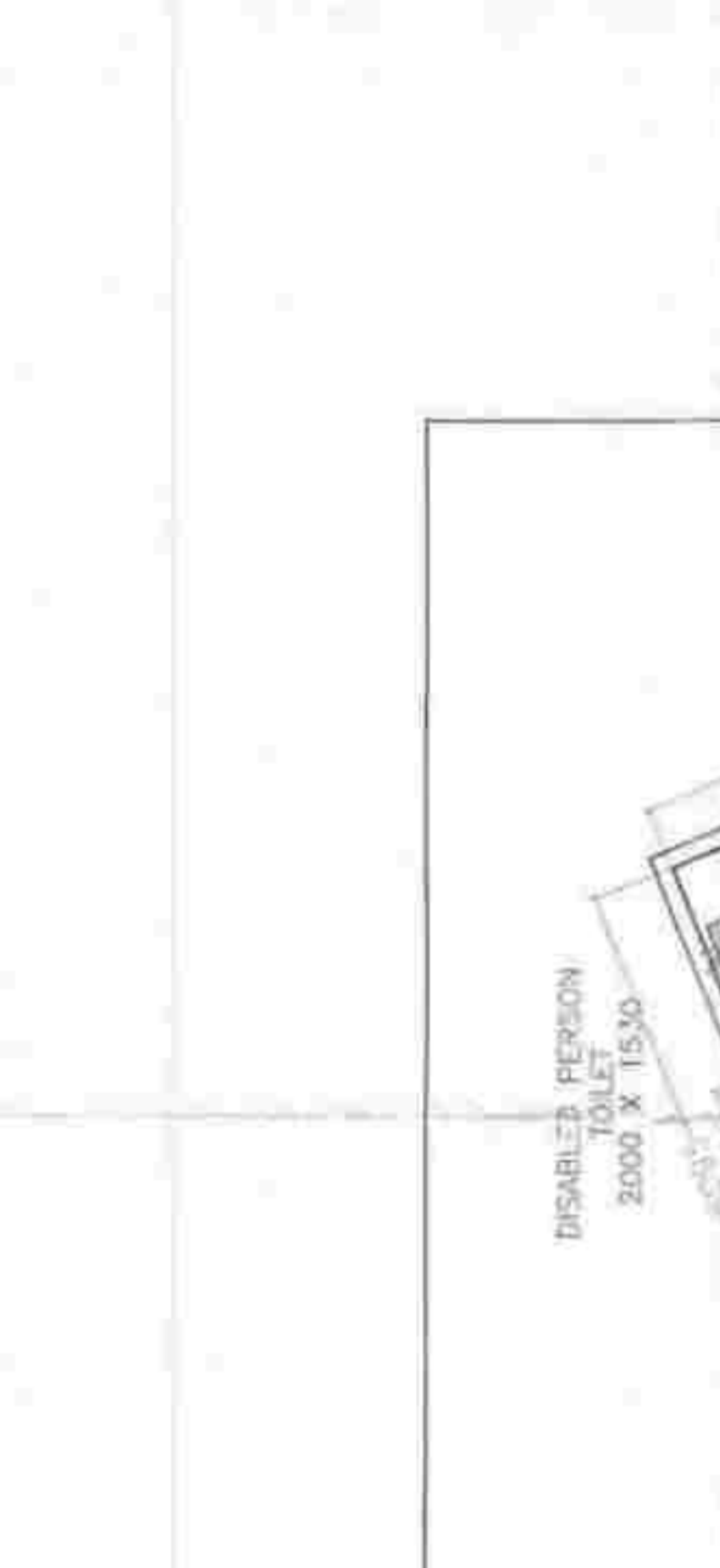
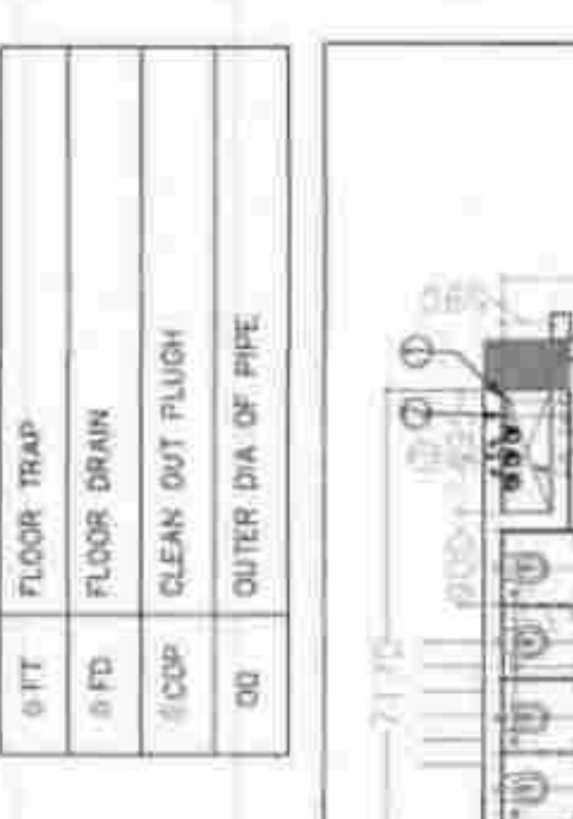
Checked and Approved by: *[Signature]*
 (Professional Engineer No. 481832, 02-11-2014)
 In accordance with the provisions of the Building Code of the State of Maharashtra.
 DATED: 15/05/2024

THIS DEVELOPMENT HAS BEEN CONCEIVED, DESIGNED AND DRAWN ON THE BASIS OF THE FOLLOWING:

1. ALL DISABLED OFFICE SPACES (OFFICE, SHOPS/COMMERCIAL SPACES) SHALL BE MECHANICALLY VENTILATED. NO NATURAL VENTILATION OF SPACES.
2. ALL TOILET SPACES SHALL BE MECHANICALLY VENTILATED, CONDITIONED AND VENTED OUT THROUGH A VENT SHIRT.
3. ALL SPACES (OFFICE SPACES, RETAIL SPACES, SERVICE AREAS, PARKING AREAS, ETC.) SHALL BE MECHANICALLY VENTILATED. MECHANICAL VENTILATION SHALL BE AVAILABLE IN THE OFFICE SPACES IS ONLY INCIDENTAL AND NOT ESSENTIAL TO THE FUNCTIONING OF THE BUILDING. THE BUILDING SHALL BE ESSENTIAL TO THE FUNCTIONING OF THE BUILDING. THE BUILDING SHALL BE ESSENTIAL TO THE FUNCTIONING OF THE BUILDING. THE BUILDING SHALL BE ESSENTIAL TO THE FUNCTIONING OF THE BUILDING.
4. STANDBY GENERATION FOR ALL COMMON SERVICES (ELECTRICITY, WATER, ETC.) SHALL BE PROVIDED IN THE BUILDING. THE BUILDING SHALL BE ESSENTIAL TO THE FUNCTIONING OF THE BUILDING. THE BUILDING SHALL BE ESSENTIAL TO THE FUNCTIONING OF THE BUILDING. THE BUILDING SHALL BE ESSENTIAL TO THE FUNCTIONING OF THE BUILDING.
5. HANDICAP RAMP SHALL BE PROVIDED. HANDICAP RAMP SHALL BE PROVIDED. HANDICAP RAMP SHALL BE PROVIDED. HANDICAP RAMP SHALL BE PROVIDED. HANDICAP RAMP SHALL BE PROVIDED.
6. HANDICAP RAMP SHALL BE PROVIDED. HANDICAP RAMP SHALL BE PROVIDED. HANDICAP RAMP SHALL BE PROVIDED. HANDICAP RAMP SHALL BE PROVIDED. HANDICAP RAMP SHALL BE PROVIDED.

SCHEDULE OF PIPES

PIPE NO.	DESCRIPTION
1	110 OD SOIL PIPE
2	110 OD WASTE PVC
3	110 OD RESTAURANT WASTE PIPE
4	DOMESTIC WATER SUPPLY
5	FLUSHING WATER SUPPLY
6	TOILET WATER SUPPLY
7	TOILET WATER SUPPLY
8	110 OD RWI WATER PIPE
9	FLOOR TRAP
10	FLOOR DRAIN
11	CLEAN OUT PLUGH
12	OUTER DIA OF PIPE



SECOND FLOOR TOILET CALCULATION

NO.	AREA (SQ. M)	TOILET CALCULATION	TOILET CALCULATION	TOILET CALCULATION	TOILET CALCULATION
1	100	1	1	1	1
2	200	2	2	2	2
3	300	3	3	3	3
4	400	4	4	4	4
5	500	5	5	5	5
6	600	6	6	6	6
7	700	7	7	7	7
8	800	8	8	8	8
9	900	9	9	9	9
10	1000	10	10	10	10

SECOND FLOOR TOILET CALCULATION

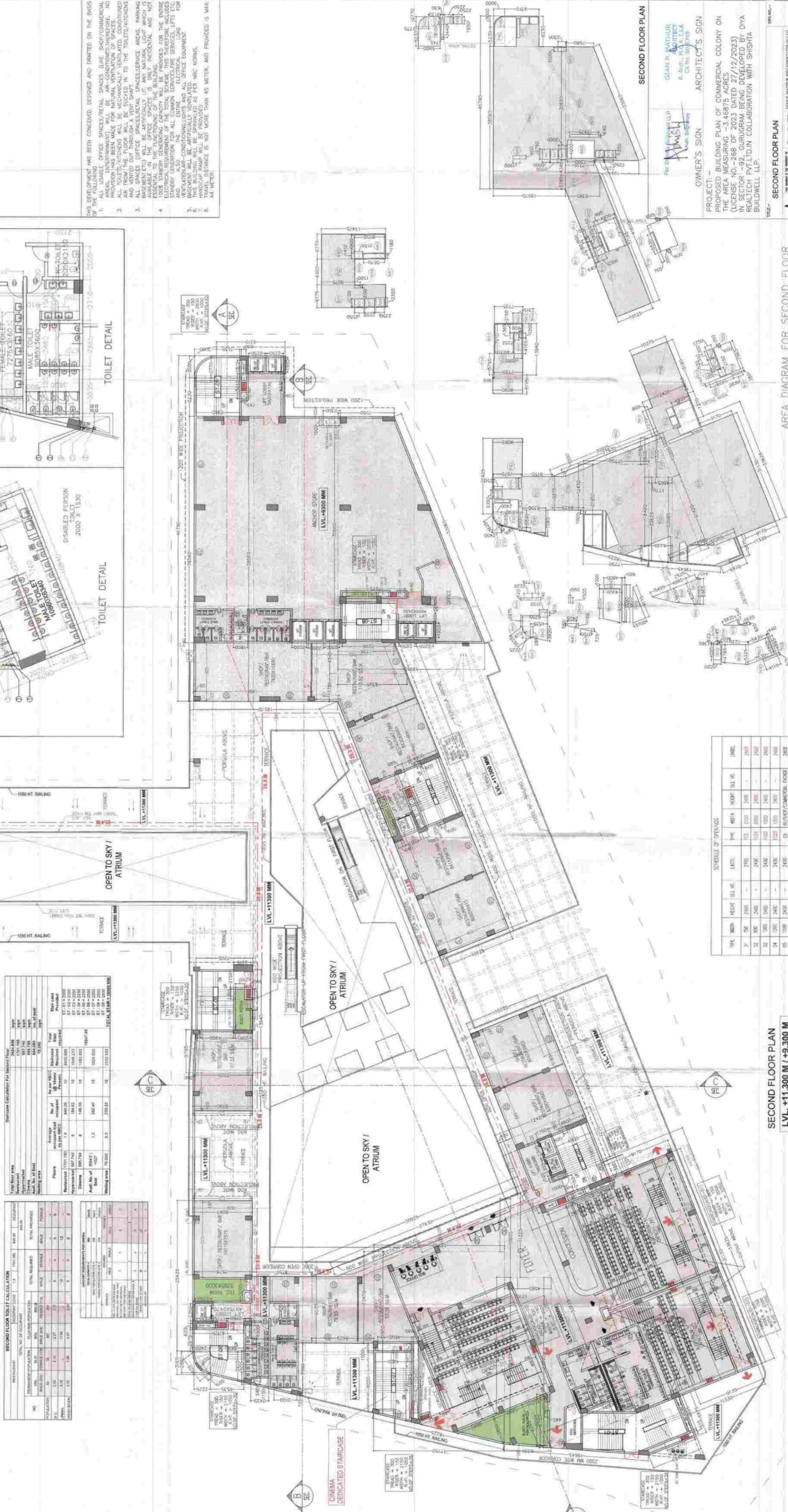
NO.	AREA (SQ. M)	TOILET CALCULATION	TOILET CALCULATION	TOILET CALCULATION	TOILET CALCULATION
1	100	1	1	1	1
2	200	2	2	2	2
3	300	3	3	3	3
4	400	4	4	4	4
5	500	5	5	5	5
6	600	6	6	6	6
7	700	7	7	7	7
8	800	8	8	8	8
9	900	9	9	9	9
10	1000	10	10	10	10

SCHEDULE OF OFFICES

OFFICE NO.	AREA (SQ. M)	TYPE	STATUS
1	100	Office	Occupied
2	200	Office	Occupied
3	300	Office	Occupied
4	400	Office	Occupied
5	500	Office	Occupied
6	600	Office	Occupied
7	700	Office	Occupied
8	800	Office	Occupied
9	900	Office	Occupied
10	1000	Office	Occupied

SCHEDULE OF OFFICES

OFFICE NO.	AREA (SQ. M)	TYPE	STATUS
1	100	Office	Occupied
2	200	Office	Occupied
3	300	Office	Occupied
4	400	Office	Occupied
5	500	Office	Occupied
6	600	Office	Occupied
7	700	Office	Occupied
8	800	Office	Occupied
9	900	Office	Occupied
10	1000	Office	Occupied



SCHEDULE OF OFFICES

OFFICE NO.	AREA (SQ. M)	TYPE	STATUS
1	100	Office	Occupied
2	200	Office	Occupied
3	300	Office	Occupied
4	400	Office	Occupied
5	500	Office	Occupied
6	600	Office	Occupied
7	700	Office	Occupied
8	800	Office	Occupied
9	900	Office	Occupied
10	1000	Office	Occupied

SCHEDULE OF OFFICES

OFFICE NO.	AREA (SQ. M)	TYPE	STATUS
1	100	Office	Occupied
2	200	Office	Occupied
3	300	Office	Occupied
4	400	Office	Occupied
5	500	Office	Occupied
6	600	Office	Occupied
7	700	Office	Occupied
8	800	Office	Occupied
9	900	Office	Occupied
10	1000	Office	Occupied

SCHEDULE OF OFFICES

OFFICE NO.	AREA (SQ. M)	TYPE	STATUS
1	100	Office	Occupied
2	200	Office	Occupied
3	300	Office	Occupied
4	400	Office	Occupied
5	500	Office	Occupied
6	600	Office	Occupied
7	700	Office	Occupied
8	800	Office	Occupied
9	900	Office	Occupied
10	1000	Office	Occupied

