

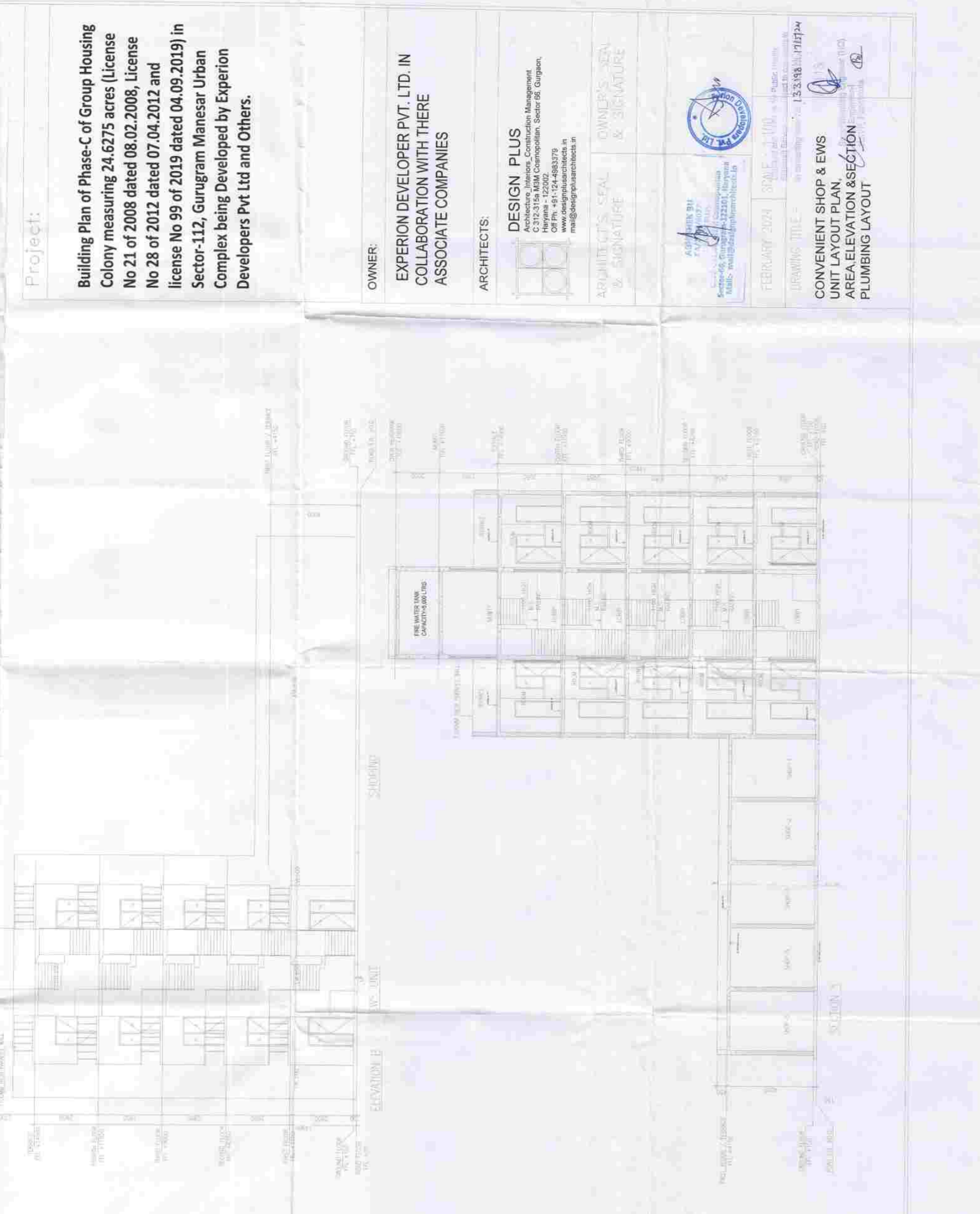
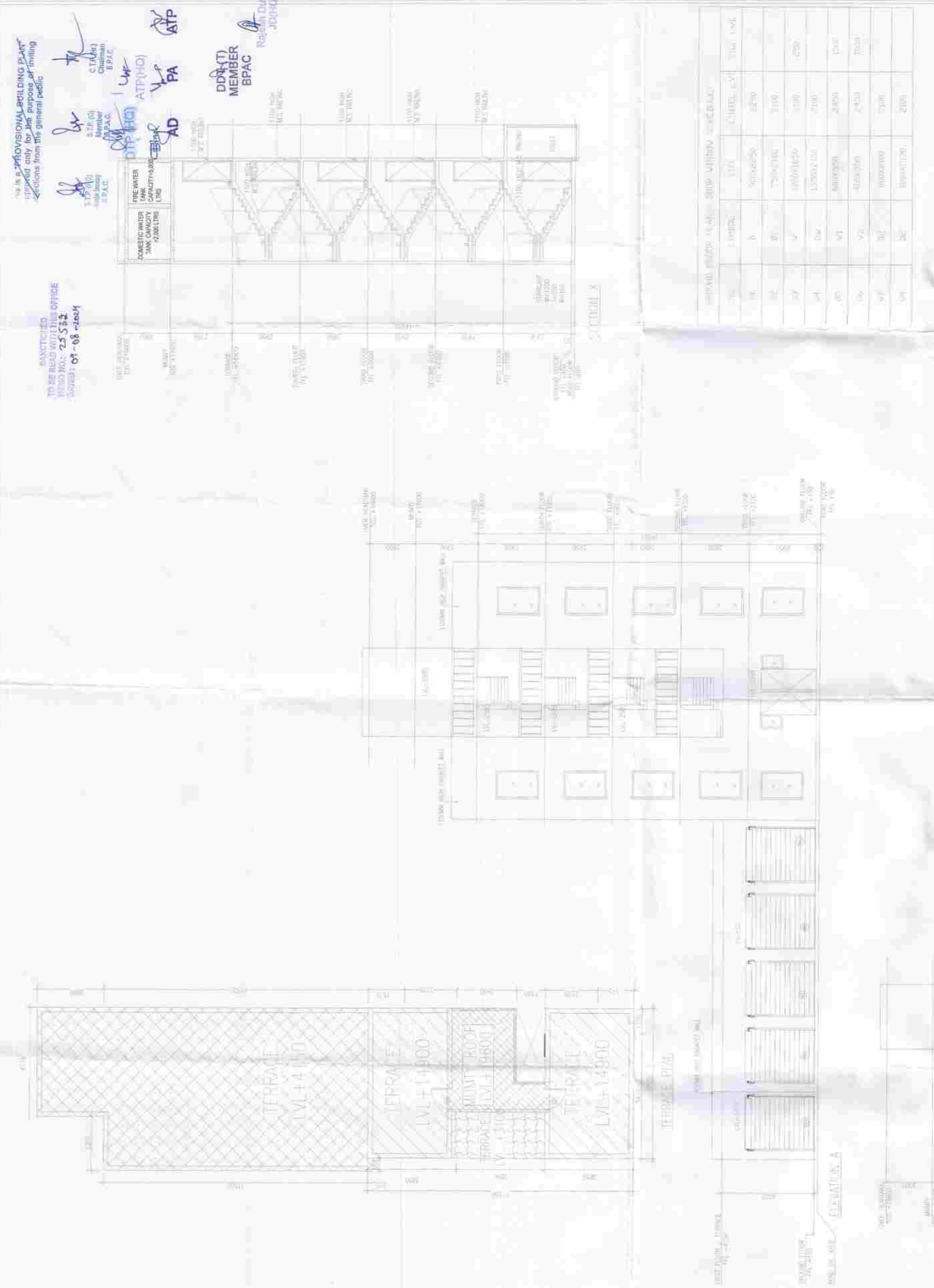
AREA STATEMENT			
PROPOSED CONVENIENT SHOP GROUND COVERAGE & FAR			
S.NO	LENGTH	BREADTH	AREA IN SQ.M
C1	4.75	2.90	13.72
C2	0.55	1.00	0.55
C3	0.55	1.00	0.55
C4	2.07	3.85	7.97
TOTAL			22.79
PROPOSED BHK GROUND COVERAGE & FAR			
S.NO	LENGTH	BREADTH	AREA IN SQ.M
E1	6.35	1.75	11.11
E2	5.45	2.75	14.99
E3	1.85	1.25	2.31
E4	1.10	1.00	1.10
E5	1.10	1.00	1.10
E6	1.00	0.20	0.20
E7	4.85	2.00	9.70
TOTAL			50.00
PROPOSED COVERED AREA ON GROUND FLOOR			
S.NO	LENGTH	BREADTH	AREA IN SQ.M
F1	4.55	2.00	9.10
F2	4.55	2.00	9.10
F3	4.55	2.00	9.10
F4	4.55	2.00	9.10
F5	4.55	2.00	9.10
F6	4.55	2.00	9.10
F7	4.55	2.00	9.10
F8	4.55	2.00	9.10
F9	4.55	2.00	9.10
F10	4.55	2.00	9.10
F11	4.55	2.00	9.10
F12	4.55	2.00	9.10
F13	4.55	2.00	9.10
F14	4.55	2.00	9.10
F15	4.55	2.00	9.10
F16	4.55	2.00	9.10
F17	4.55	2.00	9.10
F18	4.55	2.00	9.10
F19	4.55	2.00	9.10
F20	4.55	2.00	9.10
F21	4.55	2.00	9.10
F22	4.55	2.00	9.10
F23	4.55	2.00	9.10
F24	4.55	2.00	9.10
F25	4.55	2.00	9.10
F26	4.55	2.00	9.10
F27	4.55	2.00	9.10
F28	4.55	2.00	9.10
F29	4.55	2.00	9.10
F30	4.55	2.00	9.10
F31	4.55	2.00	9.10
F32	4.55	2.00	9.10
F33	4.55	2.00	9.10
F34	4.55	2.00	9.10
F35	4.55	2.00	9.10
F36	4.55	2.00	9.10
F37	4.55	2.00	9.10
F38	4.55	2.00	9.10
F39	4.55	2.00	9.10
F40	4.55	2.00	9.10
F41	4.55	2.00	9.10
F42	4.55	2.00	9.10
F43	4.55	2.00	9.10
F44	4.55	2.00	9.10
F45	4.55	2.00	9.10
F46	4.55	2.00	9.10
F47	4.55	2.00	9.10
F48	4.55	2.00	9.10
F49	4.55	2.00	9.10
F50	4.55	2.00	9.10
F51	4.55	2.00	9.10
F52	4.55	2.00	9.10
F53	4.55	2.00	9.10
F54	4.55	2.00	9.10
F55	4.55	2.00	9.10
F56	4.55	2.00	9.10
F57	4.55	2.00	9.10
F58	4.55	2.00	9.10
F59	4.55	2.00	9.10
F60	4.55	2.00	9.10
F61	4.55	2.00	9.10
F62	4.55	2.00	9.10
F63	4.55	2.00	9.10
F64	4.55	2.00	9.10
F65	4.55	2.00	9.10
F66	4.55	2.00	9.10
F67	4.55	2.00	9.10
F68	4.55	2.00	9.10
F69	4.55	2.00	9.10
F70	4.55	2.00	9.10
F71	4.55	2.00	9.10
F72	4.55	2.00	9.10
F73	4.55	2.00	9.10
F74	4.55	2.00	9.10
F75	4.55	2.00	9.10
F76	4.55	2.00	9.10
F77	4.55	2.00	9.10
F78	4.55	2.00	9.10
F79	4.55	2.00	9.10
F80	4.55	2.00	9.10
F81	4.55	2.00	9.10
F82	4.55	2.00	9.10
F83	4.55	2.00	9.10
F84	4.55	2.00	9.10
F85	4.55	2.00	9.10
F86	4.55	2.00	9.10
F87	4.55	2.00	9.10
F88	4.55	2.00	9.10
F89	4.55	2.00	9.10
F90	4.55	2.00	9.10
F91	4.55	2.00	9.10
F92	4.55	2.00	9.10
F93	4.55	2.00	9.10
F94	4.55	2.00	9.10
F95	4.55	2.00	9.10
F96	4.55	2.00	9.10
F97	4.55	2.00	9.10
F98	4.55	2.00	9.10
F99	4.55	2.00	9.10
F100	4.55	2.00	9.10

CAR PARKING PROVIDED FOR CONV. SHOPPING AND BMS			
S.NO	DESCRIPTION	AREA IN SQ.M	NO. OF BAYS
1	CONV. SHOPPING	13.72	5
2	BMS	11.11	5
TOTAL			10

NOTE - S.NO. PARKING FOR BMS			
S.NO	DESCRIPTION	LENGTH	WIDTH
1	P1	3.8	3.8
2	P2	3.8	3.8
3	P3	6.375	4.95
4	P4	6.375	6
TOTAL			214.847

TYPICAL UNIT CARPET AREA STATEMENT			
S.NO	LENGTH	BREADTH	AREA IN SQ.M
1.000	5.035	3.450	17.371
2.000	1.100	1.175	1.293
TOTAL TYPICAL UNIT CARPET AREA STATEMENT			18.663
TYPICAL UNIT BUILT UP AREA STATEMENT			
S.NO	LENGTH	BREADTH	AREA IN SQ.M
1.000	5.435	3.850	20.925
2.000	1.100	1.575	1.733
TOTAL TYPICAL UNIT BUILT UP AREA STATEMENT			22.657



**Project:**  
 Building Plan of Phase-C of Group Housing Colony measuring 24.6275 acres License No 21 of 2008 dated 08.02.2008, License No 28 of 2012 dated 07.04.2012 and license No 99 of 2019 dated 04.09.2019 in Sector-112, Gurugram Manesar Urban Complex being Developed by Expertion Developers Pvt Ltd and Others.

**OWNER:**  
 EXPERTION DEVELOPER PVT. LTD. IN COLLABORATION WITH THERE ASSOCIATE COMPANIES

**ARCHITECTS:**  
 DESIGN PLUS  
 C-312/315A, 4th Floor, Manesar, Gurugram, Haryana  
 Phone: 91-124-483379  
 www.designplusarchitects.in

**DATE:** FEBRUARY 2024  
**SCALE:** 1:100  
**DRAWING TITLE:** CONVENIENT SHOP & EWS UNIT LAYOUT PLAN, AREA ELEVATION & SECTION PLUMBING LAYOUT