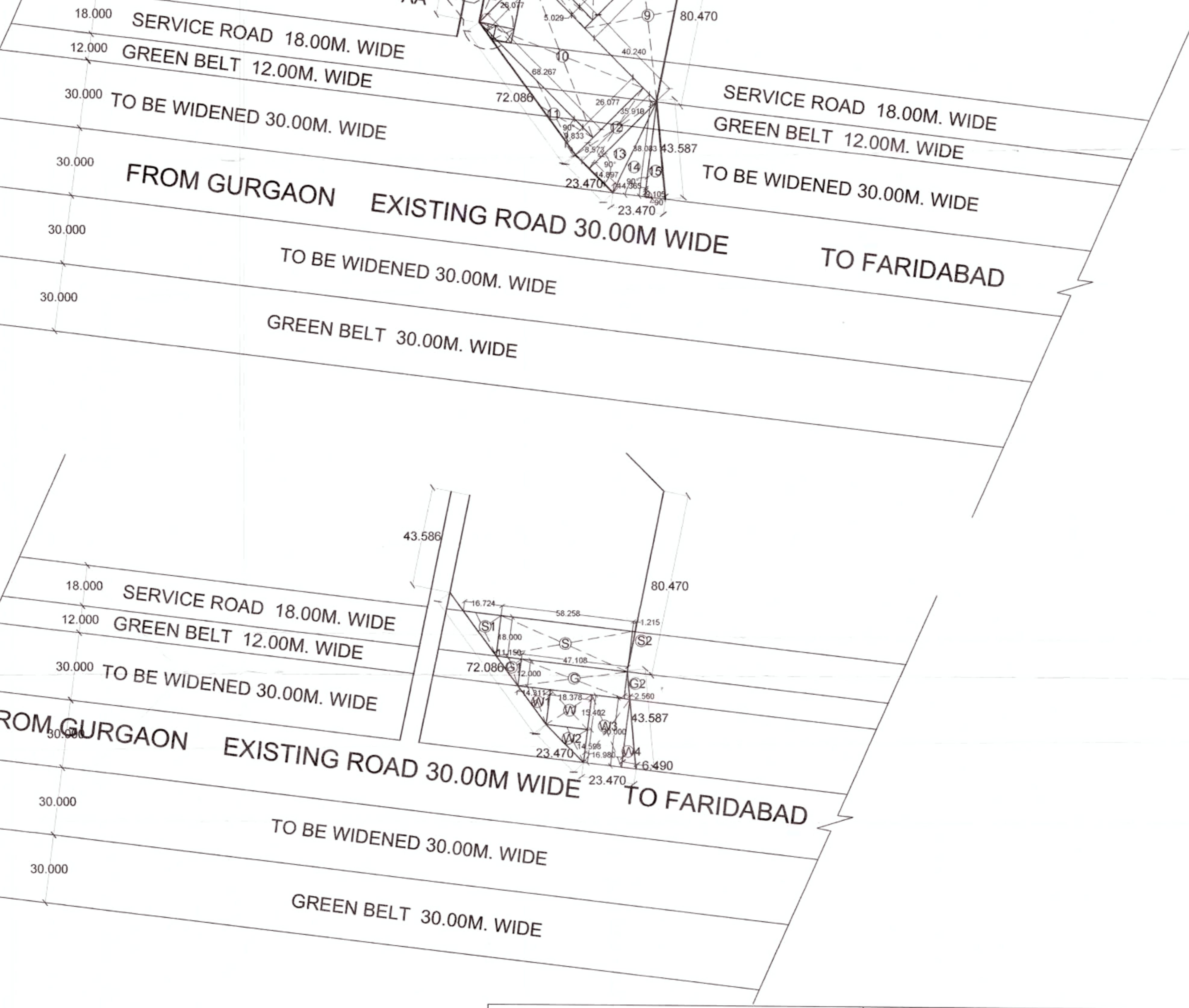
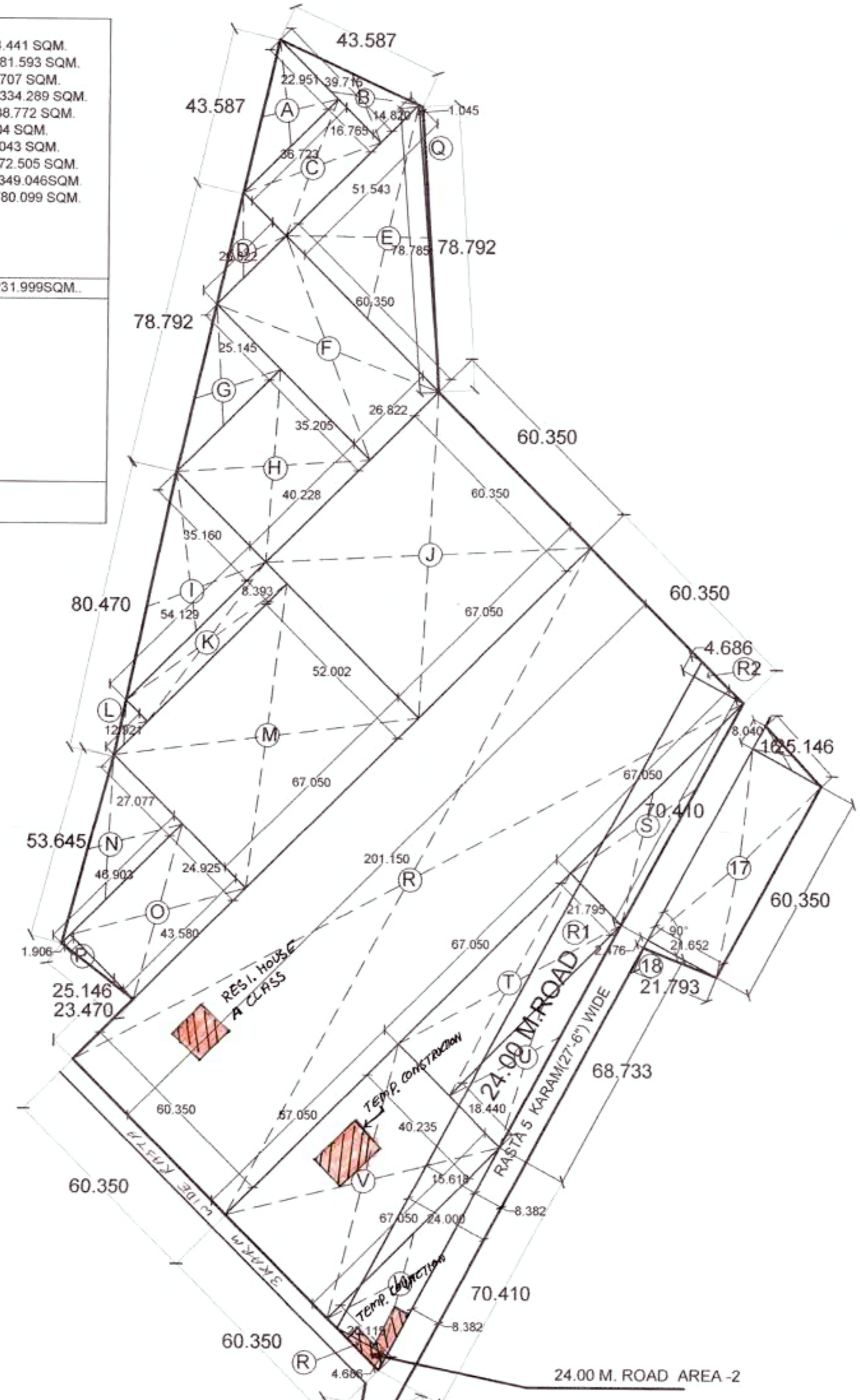


| | | |
|---|---|---|
| A=22.951X36.723/2=421.415 SQM B=14.820X39.716/2=294.296 SQM C=16.765X38.723/2=615.951 SQM D=26.822X16.785/2=224.835 SQM E=60.350X51.543/2=1555.310 SQM F=60.350X26.822/2=1618.708 SQM G=40.228X25.145/2=505.767 SQM H=40.228X35.205/2=1416.227 SQM I=54.129X35.160/2=951.588 SQM J=67.050X60.350/2=4046.469 SQM K=54.129X8.393/2=454.305 SQM L=12.921X8.393/2=54.223 SQM M=67.050X32.002/2=446.734 SQM N=46.903X27.077/2=634.996 SQM | O=43.580X24.925/2=1086.232 SQM P=1.906X24.925/2=23.754 SQM Q=1.045X78.785/2=41.165 SQM R=60.350X201.150/2=12139.403 SQM S=67.050X21.795/2=730.677 SQM T=67.050X21.795/2=161.355 SQM U=67.050X18.440/2=618.201 SQM V=67.050X40.235/2=697.757 SQM W=67.050X20.115/2=674.355 SQM X=35.148X49.058/2=862.145 SQM Y=15.911X11.019/2=87.682 SQM Z=20.011X28.896/2=289.119 SQM | 1=15.911X17.877/2=284.441 SQM 2=60.350X29.216/2=881.593 SQM 3=60.350X6.706/2=404.707 SQM 4=62.021X43.027/2=1334.289 SQM 5=58.670X62.021/2=3638.772 SQM 6=5.029X3.382/2=8.504 SQM 7=5.029X5.288/2=78.043 SQM 8=25.977X20.900/2=272.505 SQM 9=40.240X67.050/2=1348.046 SQM 10=68.267X26.077/2=1780.099 SQM |
| =16280.533 SQM | =20711.825 SQM | =10231.999 SQM |
| 11=9.833X68.267/2=335.635 SQM 12=8.573X35.910/2=307.856 SQM 13=14.897X35.910/2=267.476 14=14.365X38.083/2=273.531 SQM 15=9.105X38.083/2=173.373 SQM 16=21.652X8.046/2=87.041 SQM 17=21.652X60.350/2=1306.698 SQM 18=21.652X2.476/2=26.805 SQM =2778.415 SQM | | |
| =16280.533+20711.825+10231.999+2778.415= 50002.772 SQM = 12.356 ACRES | | |

| | |
|--|---|
| AREA FALLS IN 18.00M WIDE SERVICE ROAD (PART OF 30.0M GREEN BELT) | |
| S=58.258X18.00=1048.644 SQM S1=16.724X18.00=299.032 SQM S2=1.215X18.00=21.870 SQM | |
| =1210.095 SQM OR 0.299 ACS. | |
| AREA FALLS IN 12.00M WIDE (PART OF 30.0M GREEN BELT) | |
| G=47.108X12.00=565.296 SQM G1=11.150X12.00=133.800 SQM G2=2.560X12.00=30.720 SQM | |
| =847.556 SQM OR 0.16 ACS. | |
| AREA FALLS IN GURGAON FARIDABAD ROAD 30 M WIDE ROAD WIDENING | |
| W1=18.378X15.402=283.056 SQM W1=14.311X15.402=219.209 SQM W2=18.378X15.598/2=134.141 SQM W3=16.980X30.00/2=509.400 SQM W4=6.490X30.00/2=97.350 SQM | |
| =1134.158 SQM OR 0.25 ACS. | |
| 24.00 M. ROAD AREA -1 | 24.00 M. ROAD AREA -2 |
| RA=6.191X8.153=50.475 SQM RB=6.191X7.485/2=23.108 SQM RC=8.153X0.849/2=3.446 SQM RD=15.618X165.959/2=1291.932 SQM RE=15.618X21.800/2=170.236 SQM | R=4.686X15.618/2=36.593 SQM R1=204.867X15.618/2=1599.613 SQM R2=4.686X15.618/2=36.593 SQM |
| =2838.397 SQM | =3272.799 SQM |
| TOTAL= 1+2 = 2838.397+3272.799= 6111.196 SQM. I. 61 ACS. | |



| | | |
|---|------------|---------------|
| DIST. TO | DATE | PRINTS |
| DISTRIBUTION OF PRINTS | | |
| REVISIONS | | |
| CLIENT | | |
| M/S Krish Realty Nirman Pvt. Ltd. | | |
| LOI MEMO NO. 5D-V-2011/LC-2604 /13307 , DATE - 09/09/2011 | | |
| PROJECT TITLE | | |
| DEMARCATION PLAN GROUP HOUSING COLONY ON THE LAND MEASURING 12.356 ACRES AT SECTOR-2, GWAL PAHARI, DISTRICT-GURGAON | | |
| SHEET TITLE | | |
| DEMARCATION PLAN | | |
| DATE = 27-10-2011 | JE | DRAWING NO. 1 |
| SCALE = 1:10 | JD PA | |
| JOB NO. = | ATP DTP | |
| DRAWN = kashmir | | |



ARCHITECT'S : SIG.



OWNER'S : SIG.

ALL DIMENSION IN MTR.
EXISTING SHOWN AS

ARCHITECTS :
DESIGN DYNAMICS INDIA PVT. LTD.
ARCHITECTS, INTERIOR DESIGNERS & PLANNERS
108, VIJAY VIHAR, SILOKHRA ROAD, SECTOR-30, GURGAON
TEL:+919971552406, FAX:+91124-2384877, E-MAIL vjnehra@yahoo.com

This drawing is the copyright of the architect & shall not be used, reproduced or handedover to anyone without the prior written permission of the architect.