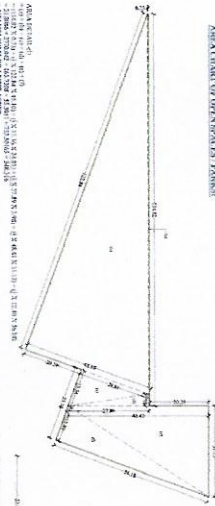
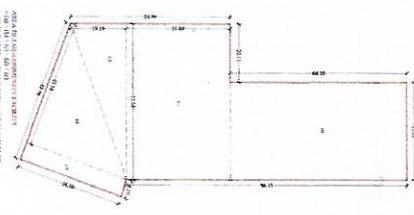


AREA CHART OF OPEN BENCH MARKS



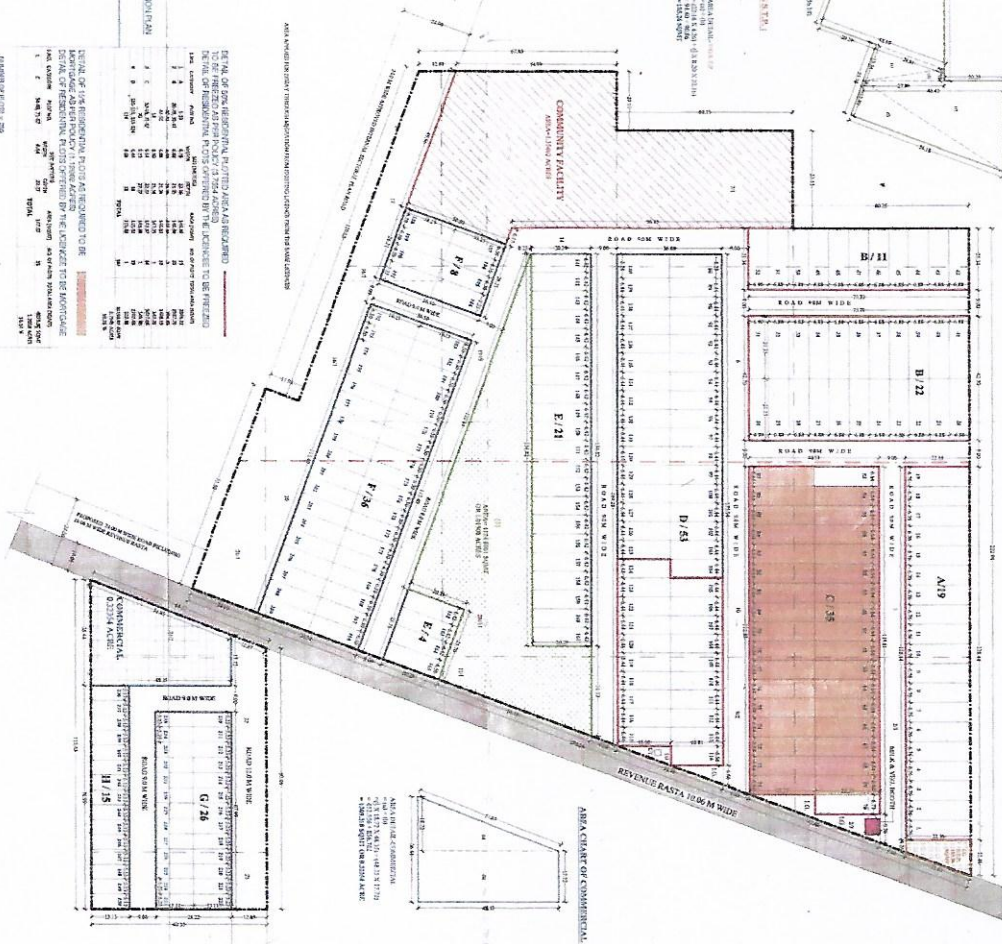
AREA CHART OF COMMUNITY FACILITIES



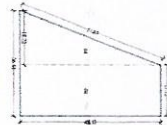
AREA CHART FOR THE



COMMUNITY FACILITY



AREA CHART OF COMMERCIAL



FOR THE YEAR 2020

FOR THE YEAR 2021

FOR THE YEAR 2022

FOR THE YEAR 2023

FOR THE YEAR 2024

FOR THE YEAR 2025

FOR THE YEAR 2026

FOR THE YEAR 2027

FOR THE YEAR 2028

FOR THE YEAR 2029

FOR THE YEAR 2030

FOR THE YEAR 2031

FOR THE YEAR 2032

FOR THE YEAR 2033

FOR THE YEAR 2034

FOR THE YEAR 2035

FOR THE YEAR 2036

FOR THE YEAR 2037

FOR THE YEAR 2038

FOR THE YEAR 2039

FOR THE YEAR 2040

FOR THE YEAR 2041

FOR THE YEAR 2042

FOR THE YEAR 2043

FOR THE YEAR 2044

FOR THE YEAR 2045

FOR THE YEAR 2046

FOR THE YEAR 2047

FOR THE YEAR 2048

FOR THE YEAR 2049

FOR THE YEAR 2050

FOR THE YEAR 2051

FOR THE YEAR 2052

FOR THE YEAR 2053

FOR THE YEAR 2054

FOR THE YEAR 2055

FOR THE YEAR 2056

FOR THE YEAR 2057

FOR THE YEAR 2058

FOR THE YEAR 2059

FOR THE YEAR 2060

FOR THE YEAR 2061

FOR THE YEAR 2062

FOR THE YEAR 2063

FOR THE YEAR 2064

FOR THE YEAR 2065

FOR THE YEAR 2066

FOR THE YEAR 2067

FOR THE YEAR 2068

FOR THE YEAR 2069

FOR THE YEAR 2070

FOR THE YEAR 2071

FOR THE YEAR 2072

FOR THE YEAR 2073

FOR THE YEAR 2074

FOR THE YEAR 2075

FOR THE YEAR 2076

FOR THE YEAR 2077

FOR THE YEAR 2078

FOR THE YEAR 2079

FOR THE YEAR 2080

FOR THE YEAR 2081

FOR THE YEAR 2082

FOR THE YEAR 2083

FOR THE YEAR 2084

FOR THE YEAR 2085

FOR THE YEAR 2086

FOR THE YEAR 2087

FOR THE YEAR 2088

FOR THE YEAR 2089

FOR THE YEAR 2090

FOR THE YEAR 2091

FOR THE YEAR 2092

FOR THE YEAR 2093

FOR THE YEAR 2094

FOR THE YEAR 2095

FOR THE YEAR 2096

FOR THE YEAR 2097

FOR THE YEAR 2098

FOR THE YEAR 2099

FOR THE YEAR 2100

AREA CHART OF OPEN BENCH MARKS

NO.	DESCRIPTION	AREA (SQ. M)	PERCENTAGE (%)	TOTAL
1	RESIDENTIAL	10000	10.00	10000
2	COMMERCIAL	20000	20.00	30000
3	INDUSTRIAL	30000	30.00	60000
4	AGRICULTURE	40000	40.00	100000
5	OPEN SPACE	50000	50.00	150000
6	ROADS	60000	60.00	210000
7	UTILITIES	70000	70.00	280000
8	WATER BODIES	80000	80.00	360000
9	FOREST	90000	90.00	450000
10	OTHER	100000	100.00	550000
TOTAL		550000	100.00	550000

- THESE ARE THE CONDITIONS OF THE CONTRACT:**
- The contractor shall be responsible for obtaining all necessary permits and licenses from the relevant authorities.
 - The contractor shall ensure that the work is completed within the specified time frame.
 - The contractor shall maintain the site in a safe and secure condition throughout the project.
 - The contractor shall provide regular progress reports to the client.
 - The contractor shall be responsible for the quality of the work and materials used.
 - The contractor shall ensure that the work complies with all applicable laws and regulations.
 - The contractor shall be responsible for the safety of the workers and the public.
 - The contractor shall be responsible for the disposal of waste and debris.
 - The contractor shall be responsible for the protection of the environment.
 - The contractor shall be responsible for the payment of taxes and duties.
 - The contractor shall be responsible for the insurance of the work.
 - The contractor shall be responsible for the maintenance of the site during the project.
 - The contractor shall be responsible for the handover of the work to the client.
 - The contractor shall be responsible for the final inspection and certification of the work.

FOR THE YEAR 2020

FOR THE YEAR 2021

FOR THE YEAR 2022

FOR THE YEAR 2023

FOR THE YEAR 2024

FOR THE YEAR 2025

FOR THE YEAR 2026

FOR THE YEAR 2027

FOR THE YEAR 2028

FOR THE YEAR 2029

FOR THE YEAR 2030

FOR THE YEAR 2031

FOR THE YEAR 2032

FOR THE YEAR 2033

FOR THE YEAR 2034

FOR THE YEAR 2035

FOR THE YEAR 2036

FOR THE YEAR 2037

FOR THE YEAR 2038

FOR THE YEAR 2039

FOR THE YEAR 2040

FOR THE YEAR 2041

FOR THE YEAR 2042

FOR THE YEAR 2043

FOR THE YEAR 2044

FOR THE YEAR 2045

FOR THE YEAR 2046

FOR THE YEAR 2047

FOR THE YEAR 2048

FOR THE YEAR 2049

FOR THE YEAR 2050

FOR THE YEAR 2051

FOR THE YEAR 2052

FOR THE YEAR 2053

FOR THE YEAR 2054

FOR THE YEAR 2055

FOR THE YEAR 2056

FOR THE YEAR 2057

FOR THE YEAR 2058

FOR THE YEAR 2059

FOR THE YEAR 2060

FOR THE YEAR 2061

FOR THE YEAR 2062

FOR THE YEAR 2063

FOR THE YEAR 2064

FOR THE YEAR 2065

FOR THE YEAR 2066

FOR THE YEAR 2067

FOR THE YEAR 2068

FOR THE YEAR 2069

FOR THE YEAR 2070

FOR THE YEAR 2071

FOR THE YEAR 2072

FOR THE YEAR 2073

FOR THE YEAR 2074

FOR THE YEAR 2075

FOR THE YEAR 2076

FOR THE YEAR 2077

FOR THE YEAR 2078

FOR THE YEAR 2079

FOR THE YEAR 2080

FOR THE YEAR 2081

FOR THE YEAR 2082

FOR THE YEAR 2083

FOR THE YEAR 2084

FOR THE YEAR 2085

FOR THE YEAR 2086

FOR THE YEAR 2087

FOR THE YEAR 2088

FOR THE YEAR 2089

FOR THE YEAR 2090

FOR THE YEAR 2091

FOR THE YEAR 2092

FOR THE YEAR 2093

FOR THE YEAR 2094

FOR THE YEAR 2095

FOR THE YEAR 2096

FOR THE YEAR 2097

FOR THE YEAR 2098

FOR THE YEAR 2099

FOR THE YEAR 2100