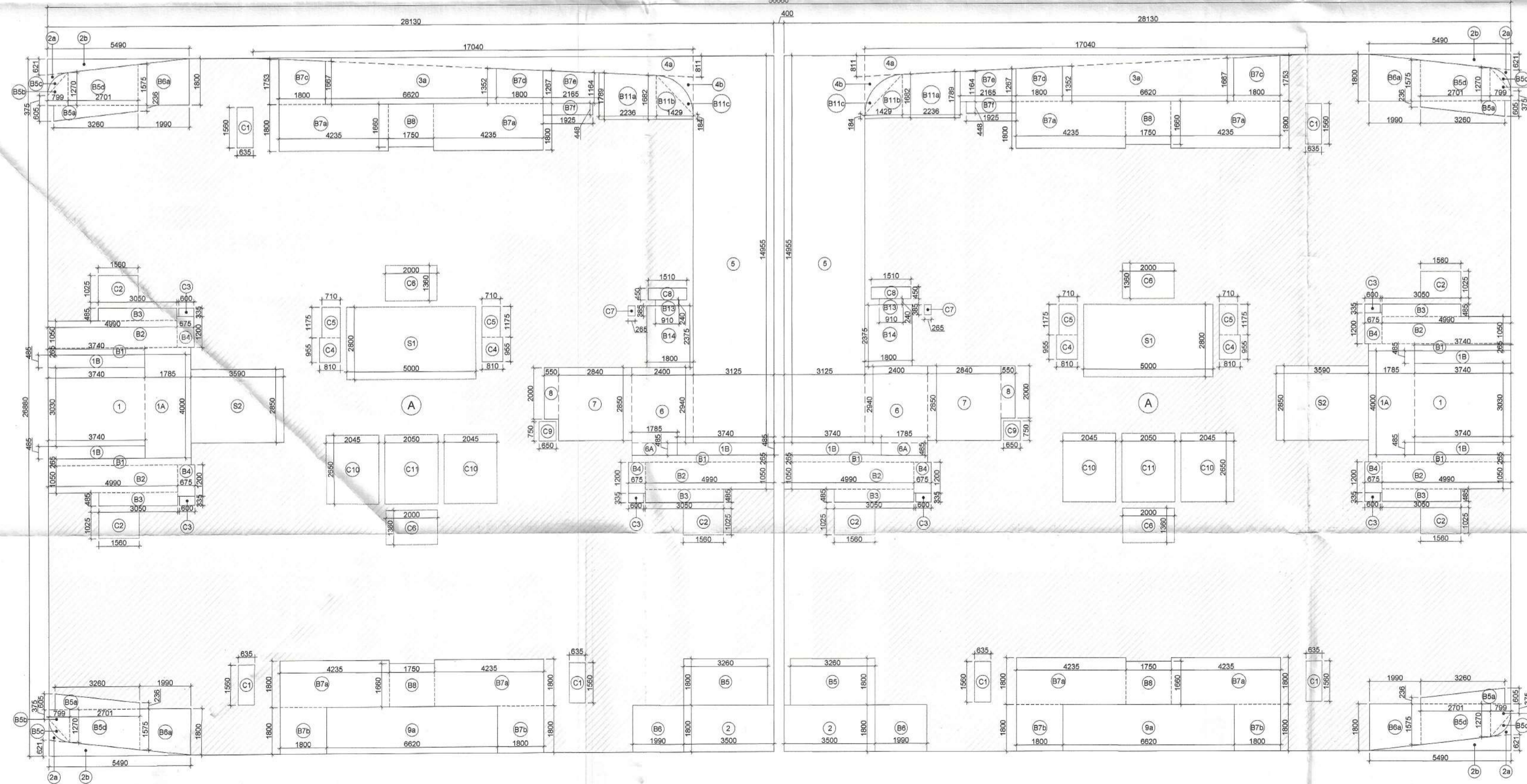


(TOWER-I)

2nd FLOOR PLAN  
(BLOCK - 5)

(TOWER-J)



(TOWER-I)

2nd FLOOR AREA DIAGRAM  
(BLOCK 05)

(TOWER-J)

AREA CALCULATION FOR 2ND FLOOR						
ENVELOPE AREA						
S.NO.	NOS.	FORMULA	LENGTH (L)	WIDTH (W)	WIDTH (W')	AREA UNITS
A	2	L X W	28.130	26.880		1512.269 SQM.
<b>TOTAL (A) =</b>						<b>1512.269 SQM.</b>
BALCONY						
B1	6	L X W	5.525	0.265		8.785 SQM.
B2	6	L X W	4.990	1.050		31.437 SQM.
B3	6	L X W	3.050	0.485		8.876 SQM.
B4	6	L X W	0.675	1.200		4.860 SQM.
B5	2	L X W	3.260	1.800		11.736 SQM.
B5a	4	1/2 (W+W')XL	3.260	0.605	0.236	5.483 SQM.
B5b	4	1/2 (W+W')XL	0.799	0.375	1.270	2.629 SQM.
B5c	4	PLINE AREA				0.752 SQM.
B5d	4	1/2 (W+W')XL	2.701	1.270	1.575	15.369 SQM.
B6	2	L X W	1.990	1.800		7.164 SQM.
B6a	4	1/2 (W+W')XL	1.990	1.575	1.800	13.433 SQM.
B7a	8	L X W	4.235	1.800		60.984 SQM.
B7b	4	L X W	1.800	1.800		12.960 SQM.
B7c	2	1/2 (W+W')XL	1.800	1.667	1.753	6.156 SQM.
B7d	2	1/2 (W+W')XL	1.800	1.267	1.352	4.714 SQM.
B7e	2	1/2 (W+W')XL	2.165	1.164	1.267	5.263 SQM.
B7f	2	L X W	1.925	0.448		1.725 SQM.
B8	4	L X W	1.750	1.860		11.620 SQM.
B11a	2	1/2 (W+W')XL	2.236	1.682	1.789	7.761 SQM.
B11b	2	1/2 (W+W')XL	1.429	0.184	1.682	2.667 SQM.
B11c	2	PLINE AREA				1.178 SQM.
B13	2	L X W	0.910	0.240		0.437 SQM.
B14	2	L X W	1.800	2.375		8.550 SQM.
1B	6	L X W	3.740	0.485		10.883 SQM.
<b>TOTAL (B) =</b>						<b>245.420 SQM.</b>
CUT OUT / DEDUCTION AREA						
1	2	L X W	3.740	3.030		22.664 SQM.
1A	2	L X W	1.785	4.000		14.280 SQM.
2	2	L X W	3.500	1.800		12.600 SQM.
2a	4	PLINE AREA				0.532 SQM.
2b	4	1/2 X L X W	5.490	0.621		6.819 SQM.
3a	2	1/2 (W+W')XL	6.620	1.352	1.667	19.986 SQM.
4a	2	1/2 X L X W	17.040	0.811		13.819 SQM.
4b	2	PLINE AREA				0.862 SQM.
5	2	L X W	3.125	14.955		93.469 SQM.
6	2	L X W	2.400	2.940		14.112 SQM.
6A	2	L X W	1.785	0.485		1.731 SQM.
7	2	L X W	2.840	2.850		16.188 SQM.
8	2	L X W	0.550	2.000		2.200 SQM.
9a	2	L X W	6.620	1.800		23.832 SQM.
C1	6	L X W	0.635	1.560		5.944 SQM.
C2	6	L X W	1.560	1.025		9.594 SQM.
C3	6	L X W	0.600	0.335		1.206 SQM.
C4	4	L X W	0.810	0.955		3.094 SQM.
C5	4	L X W	0.710	1.175		3.337 SQM.
C6	4	L X W	2.000	1.360		10.880 SQM.
C7	2	L X W	0.265	0.385		0.204 SQM.
C8	2	L X W	1.510	0.450		1.359 SQM.
C9	2	L X W	0.650	0.750		0.975 SQM.
C10	4	L X W	2.045	2.650		21.677 SQM.
C11	2	L X W	2.050	2.650		10.865 SQM.
<b>TOTAL (C) =</b>						<b>312.229 SQM.</b>
NON FAR AREA						
S1	2	L X W	5.000	2.800		28.000 SQM.
S2	2	L X W	3.590	2.850		20.463 SQM.
<b>TOTAL (D) =</b>						<b>48.463 SQM.</b>
<b>TOTAL FAR AREA (A)-(B)+(C)+(D)</b>						<b>906.156 SQM.</b>
<b>TOTAL COVERED AREA = (A)-(B)+(C)</b>						<b>954.619 SQM.</b>
<b>TOTAL BUILT UP AREA (A-C)</b>						<b>1200.040 SQM.</b>

This is a "PROVISIONAL BUILDING PLAN" approved only for the purpose of inviting Objections from the general public

DDT (T) MEMBER BPAC  
S.T.P. (HQ) Member Secretary B.P.A.C.  
S.T.P. (G) Member B.P.A.C.  
S.T.P. (R) Chairman B.P.A.C.

Consultant Architect  
AD. P.A. J.D.P.

ATP(HQ) Rajesh Dutt JD(HQ)

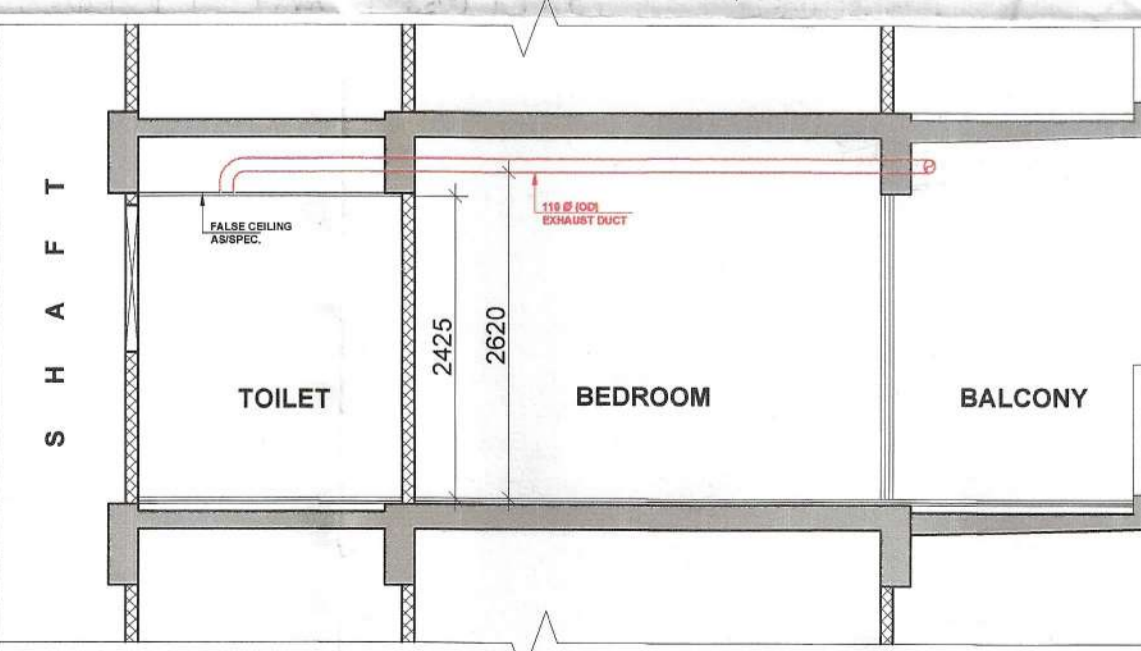
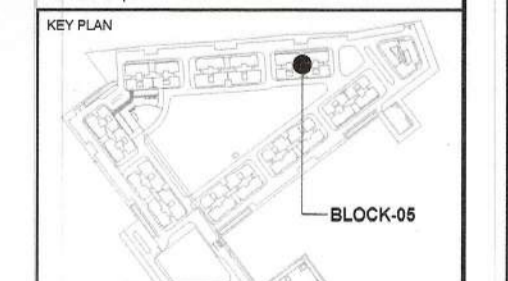
TO BE READ WITH THIS OFFICE MEMO NO. 99/20 DATED: 15/3/24

Chief Engineer for Public Health (Internal) Service  
Supervising Engineer (HQ) for Chief Engineer-I HSPV, Panchkula

DOOR WINDOW OPENING SCHEDULE						
TYPE	WIDTH	HEIGHT	GLL	LABEL	PIRE RATING	
D1	750	2425	00	2425		
D2	1500	2425	00	2425		
DW1	1275	2045	00/00/00	2425		
DW2	2850	2425	00	2425		
DW3	2125	2425	00	2425		
DW4	6070	2425	00	2425		
DW5	1800	2425	00	2425		
DW6	900	2325	100	2425		
DW7	1125	2425	00	2425		
DW8	1750	1525	000	2425		
DW9	600	1225	1000	2425		
DW10	800/840	1525	000	2425		
DW11	2100	1525	000	2425		
DW12	1400	1525	000	2425		
DW13	600	900	1000	2425		
DW14	1200	2100	00	2100		

PLUMBING LEGEND:	
①	1100 SOIL PIPE
②	1100 WASTE PIPE
③	1100 RAIN WATER PIPE
④	1000 DRAIN TAKE PIPE
⑤	800 FROM BOOSTER PLUM
⑥	1100 BALCONY DRAIN PIPE
⑦	FWO DRAIN TAKE PIPE
⑧	1100 BALCONY DRAIN PIPE
⑨	400 DOMESTIC WATER SUPPLY RISER
⑩	500 FLUSHING WATER SUPPLY RISER
⑪	750 ANTIPHONAGE PIPE
WB TO FT	400 WASTE PIPE
SNK TO FT	500 WASTE PIPE
FD	FLOOR DRAIN WITH GRATING
FT	FLOOR TRAP WITH GRATING
MTD	MULTI TRAP WITH GRATING
BD	BALCONY DRAIN WITH GRATING
LDW	DOMESTIC WATER SUPPLY PIPE
FWW	FLUSHING WATER SUPPLY PIPE
LDWV	DRIVE PIPE THROUGH BOOSTER PLUM
⊙	TOILET GEYSER 2LTR
⊙	GEYSER KITCHEN GEYSER 1LTR
⊙	BOOSTER PUMP SET FOR TOP TWO FLOOR
⊙	CATCH BASIN 1100x500mm

NOTE:-  
1. The kitchen space has been considered as non-habitable space as per NBC 2016 Part-3 Section 2.45 Clause. Thus lighting and ventilation clause for kitchen do not apply only for main units kitchen.  
2. Toilets are mechanically ventilated wherever marked in plan.



PROJECT: REVISED BUILDING PLANS FOR GROUP HOUSING COLONY UNDER MIXED LAND USE IN TOD ZONE FOR AN AREA MEASURING 18.125 ACRES (80% GROUP HOUSING COMPONENT AND 11% COMMERCIAL COMPONENT) (LICENSE NO.108 OF 2022 DATED 05.08.2022) IN REVENUE ESTATE OF CHAUMA, SECTOR-113, GURUGRAM MANESAR URBAN COMPLEX BEING DEVELOPED BY M/S NOURISH DEVELOPERS PVT. LTD.

Scale: 1:100  
Drawing No: 11  
BLOCK 05: TOWER-I & J 2ND FLOOR PLAN & AREA DIAGRAMS