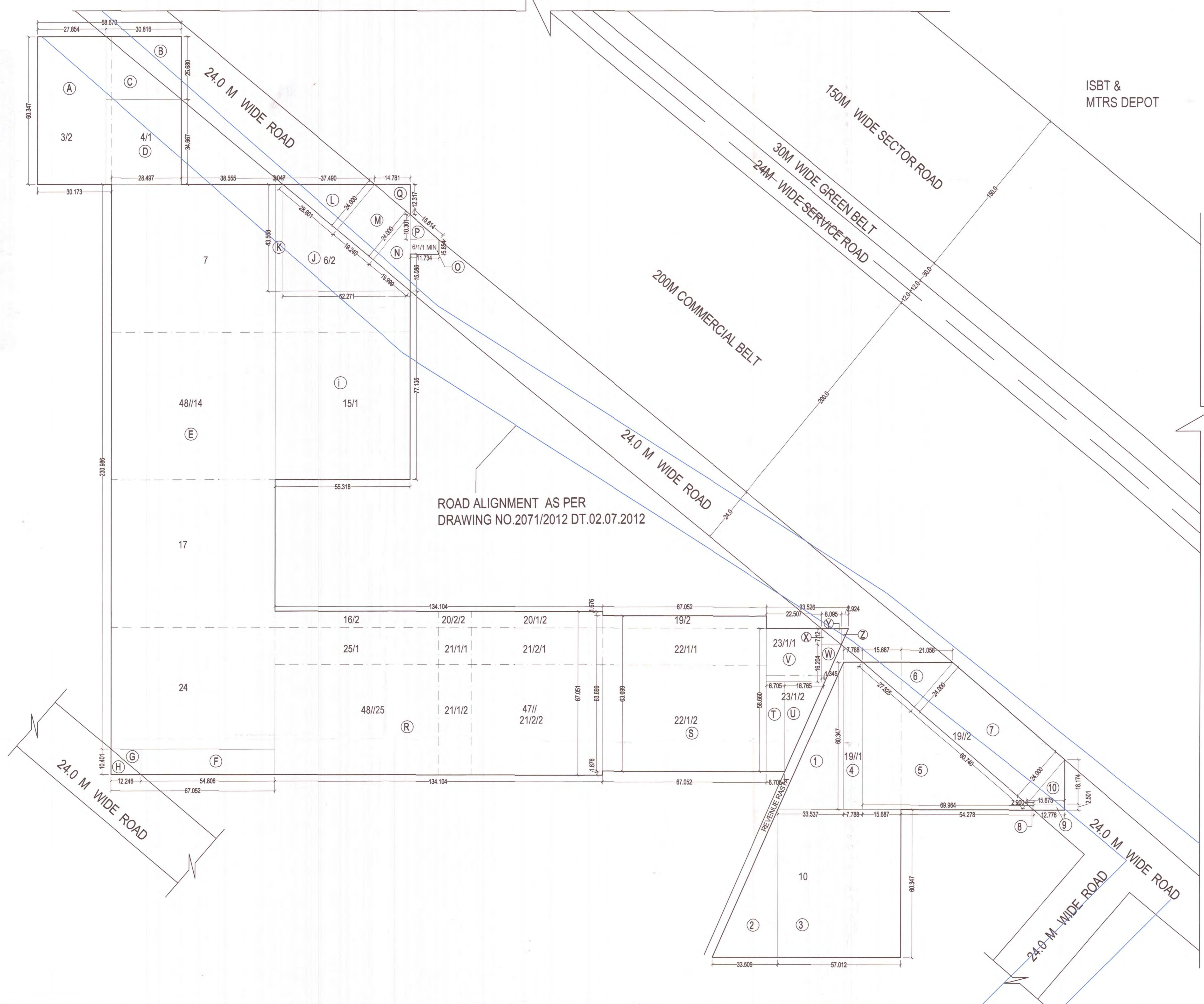


DEMARICATION PLAN FOR SETTING UP GROUP HOUSING COLONY, LAND AREA MEASURING 11.418 ACRES ( LICENSE NO.195 OF 2008) AND ADDITIONAL LAND 1.19375 ACRES. TOTAL LAND 12.611 ACRES, UNDER TOD POLICY FALLING IN THE REVENUE ESTATE OF VILLAGE KHERKI DAULA AND SIHI, SECTOR-83, GURUGRAM MANESAR URBAN COMPLEX, DEVELOPED BY GROWMORE BUILTECH PVT. LTD. & OTHER'S IN COLLABORATION WITH A & D ESTATES PVT. LTD.



ROAD ALIGNMENT AS PER DRAWING NO.2071/2012 DT.02.07.2012

*Handwritten signatures and initials:*  
PAT. HEAD, P.A., DEP.

PLOT AREA								
		Length (in Meter)	Height (in Meter)	Area (in Sqm)				
A	=	27.854	X	60.347	=	1680.9053		
B	=	0.5	X	30.816	X	25.68	=	395.677
C	=	0.5	X	30.816	X	25.68	=	395.677
D	=	30.816	X	34.667	=	1068.298		
E	=	67.052	X	230.986	=	15488.073		
F	=	54.806	X	10.401	=	570.037		
G	=	0.5	X	12.246	X	10.401	=	63.685
H	=	0.5	X	12.246	X	10.401	=	63.685
I	=	55.318	X	77.136	=	4267.009		
J	=	0.5	X	52.271	X	43.558	=	1138.410
K	=	3.047	X	43.558	=	132.721		
L	=	0.5	X	28.801	X	24.00	=	345.612
M	=	19.24	X	24.00	=	461.760		
N	=	0.5	X	19.999	X	24.00	=	239.988
O	=	11.734	X	5.854	=	68.691		
P	=	0.5	X	11.734	X	10.301	=	60.436
Q	=	0.5	X	14.781	X	12.317	=	91.029
R	=	134.104	X	67.051	=	8991.807		
S	=	67.052	X	63.699	=	4271.145		
T	=	6.705	X	36.87	=	247.213		
U	=	0.5	X	16.765	X	36.87	=	309.063
V	=	22.507	X	23.324	=	524.953		
W	=	0.5	X	9.44	X	16.204	=	76.483
X	=	0.5	X	8.095	X	7.12	=	28.818
Y	=	0.5	X	8.095	X	7.12	=	28.818
Z	=	0.5	X	2.924	X	7.12	=	10.409
1	=	0.5	X	33.537	X	60.347	=	1011.929
2	=	0.5	X	33.509	X	60.347	=	1011.084
3	=	57.012	X	60.347	=	3440.503		
4	=	7.788	X	60.347	=	469.982		
5	=	0.5	X	69.964	X	60.347	=	2111.059
6	=	0.5	X	27.83	X	24.00	=	333.900
7	=	60.74	X	24.00	=	1457.760		
8	=	0.5	X	2.90	X	2.501	=	3.626
9	=	12.776	X	2.501	=	31.953		
10	=	0.5	X	15.676	X	18.174	=	142.448

TOTAL AREA-(A) 51034.65  
OR  
AREA IN ACRES 12.611

Area Falling in Road								
B	=	0.5	X	30.816	X	25.68	=	395.677
L	=	0.5	X	28.801	X	24.00	=	345.612
M	=	19.24	X	24.00	=	461.760		
N	=	0.5	X	19.999	X	24.00	=	239.988
O	=	11.734	X	5.854	=	68.691		
P	=	0.5	X	11.734	X	10.301	=	60.436
Y	=	0.5	X	8.095	X	7.12	=	28.818
Z	=	0.5	X	2.924	X	7.12	=	10.409
6	=	0.5	X	27.83	X	24.00	=	333.900
7	=	60.74	X	24.00	=	1457.760		
8	=	0.5	X	2.90	X	2.501	=	3.626
9	=	12.776	X	2.501	=	31.953		
10	=	0.5	X	15.676	X	18.174	=	142.448

Total Road Area (B) 3581.079  
OR  
AREA IN ACRES 0.885

Net Area = A-B-C 47453.572  
OR  
AREA IN ACRES 11.726

NOTE :-  
1. ALL DIMENSIONS AND HEIGHTS ARE IN METRE.  
2. THE NORTH LINE INDICATED IS A MAGNETIC NORTH DIRECTION

REVISED ON \_\_\_\_\_ SCALE \_\_\_\_\_

NTS

TITLE :-  
DEMARICATION PLAN FOR SETTING UP GROUP HOUSING COLONY, LAND AREA MEASURING 11.418 ACRES ( LICENSE NO.195 OF 2008) AND ADDITIONAL LAND 1.19375 ACRES. TOTAL LAND 12.611 ACRES, UNDER TOD POLICY FALLING IN THE REVENUE ESTATE OF VILLAGE KHERKI DAULA AND SIHI, SECTOR-83, GURUGRAM MANESAR URBAN COMPLEX, DEVELOPED BY GROWMORE BUILTECH PVT. LTD. & OTHER'S IN COLLABORATION WITH A & D ESTATES PVT. LTD. VILL. SIHI. KHASRA No. 47/21/1/2, 21/2/2, 22/1/2, 23/1/2, 48/25/2, 3/2, 4/1, 6/1/1min, 6/2, 7, 14, 15/1, 17, 24, 19/2, 20/1/2, 20/2/2, 21/1/1, 21/2/1, 22/1/1, 23/1/1, 16/2, 25/1 VILL. KHIRKIDHOLA, KHASRA NO. 19/1, 2min, 10

OWNER :-  
M/S GROW MORE BUILTECH Pvt. Ltd.  
GOLD LINE BUILTECH Pvt. Ltd. STYLE TOWERS Pvt. Ltd. &  
A & D ESTATE Pvt. Ltd.  
Plot No. 77, SS House, Sector 44,  
Gurugram-122003

ARCHITECT'S SIGNATURE: \_\_\_\_\_ OWNER'S SIGNATURE: \_\_\_\_\_

AR. PRADEEP KUMAR  
CA/2017/84030  
B1, DEV TOWER, OPP. HUDA OFFICE  
SECTOR-14, GURUGRAM  
Mob. 955633586