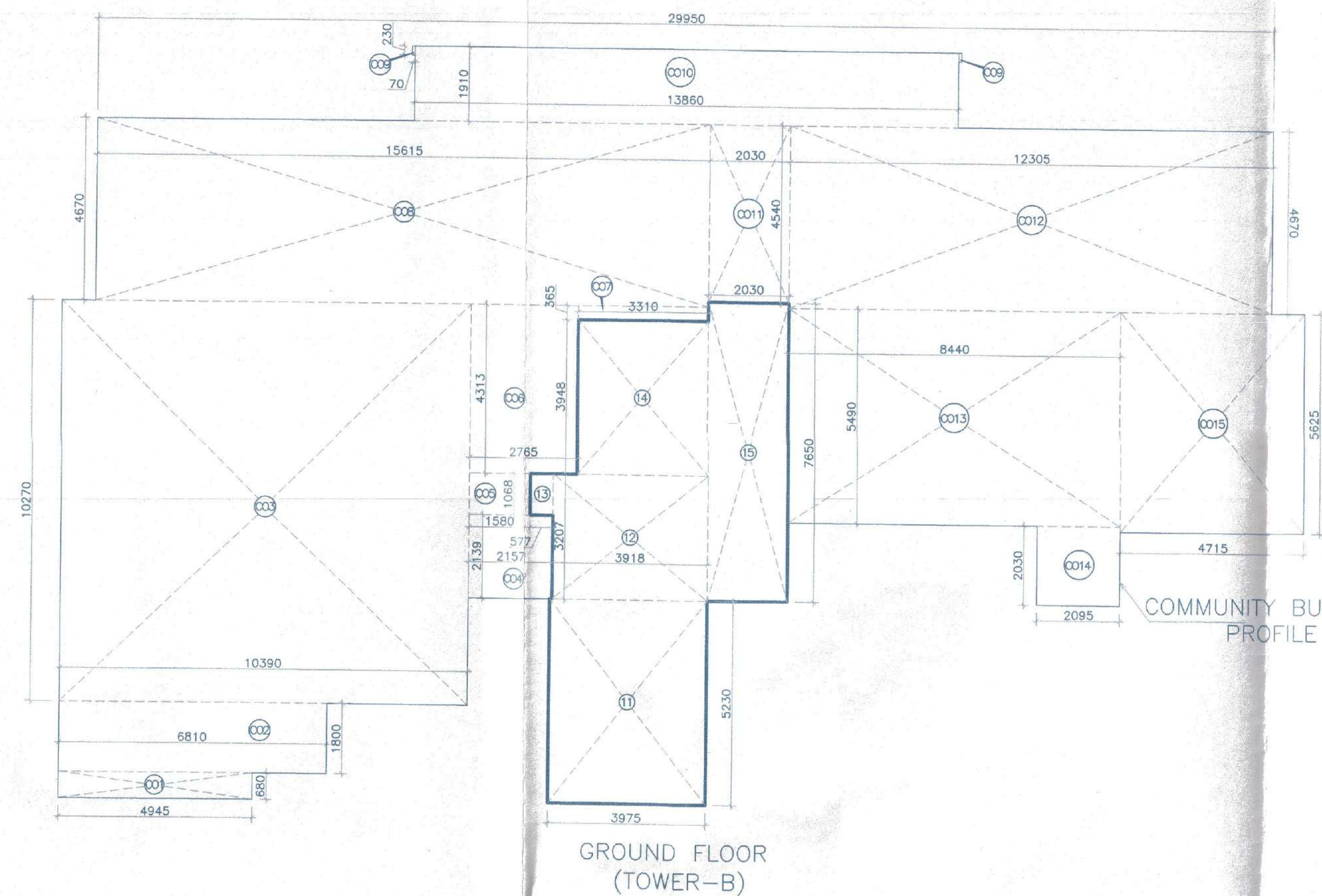
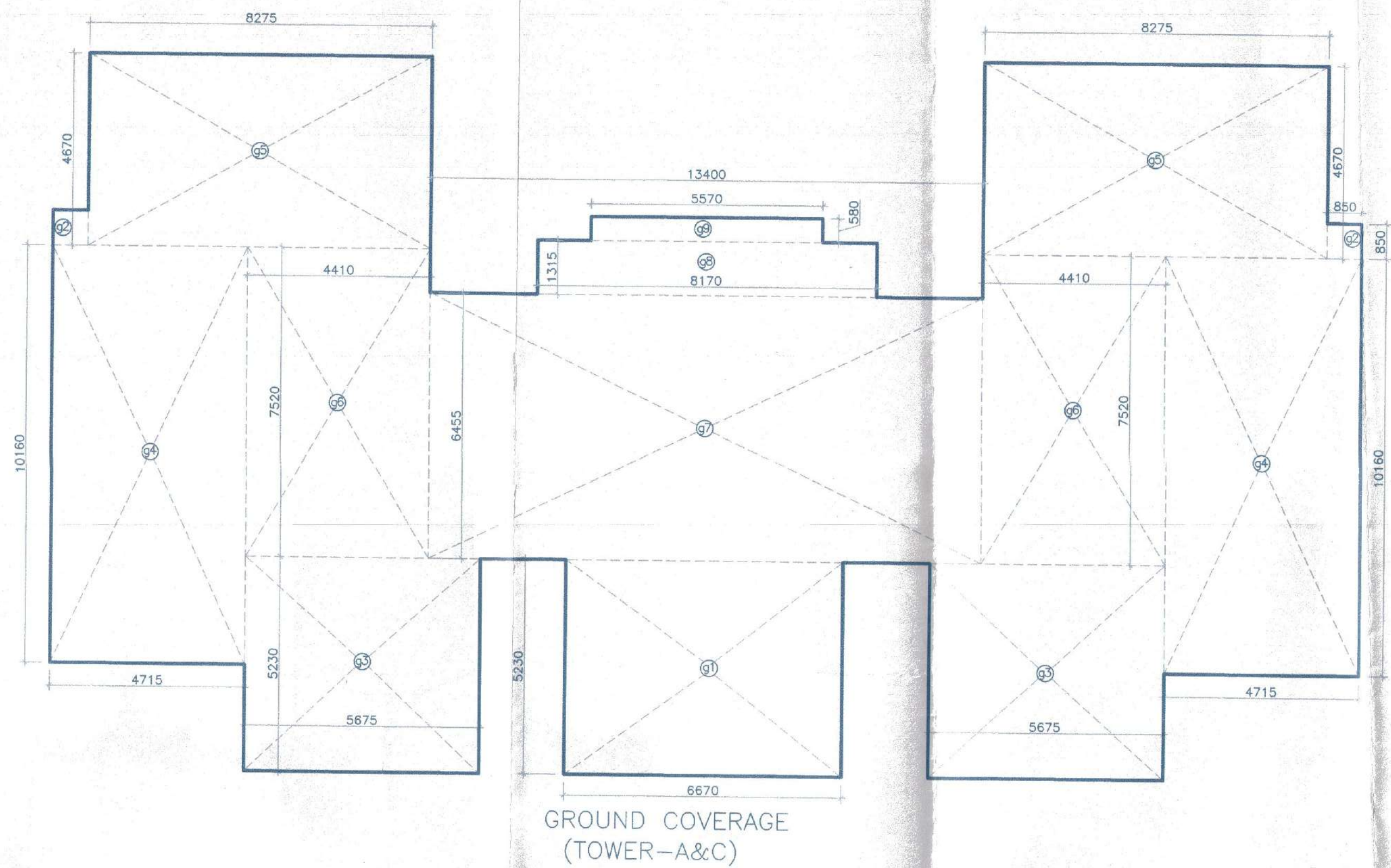


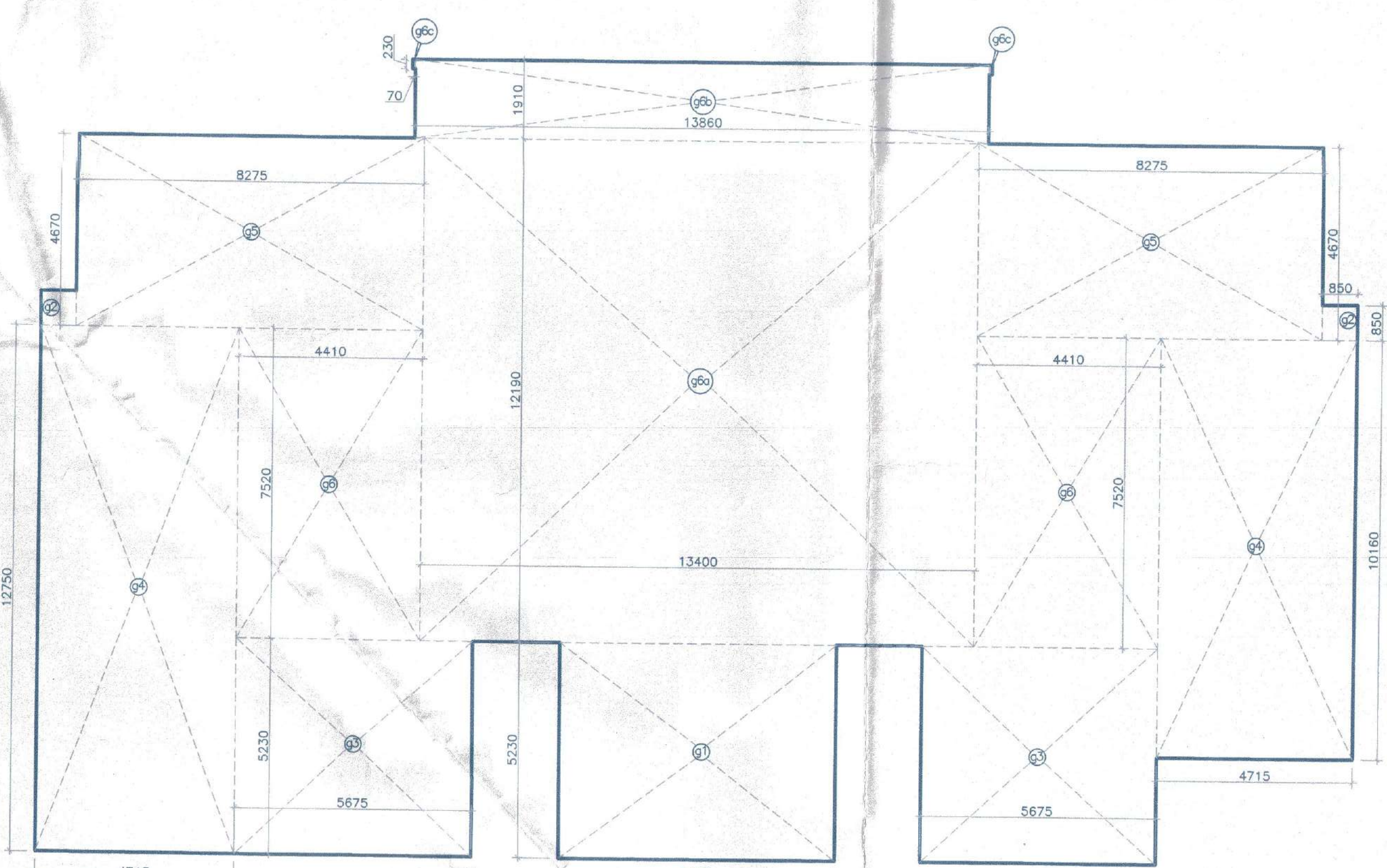
GROUND FLOOR
(TOWER-A&C)



GROUND FLOOR
(TOWER-B)



GROUND COVERAGE
(TOWER-A&C)



GROUND COVERAGE
(TOWER-B)

ADDITION - 1			
1	=	3.975 X 5.230	= 20.789 sqm
2	=	3.810 X 0.680	= 2.591 sqm
3	=	5.675 X 4.500	= 25.521 sqm
4	=	4.715 X 10.160	= 47.904 sqm
5	=	8.275 X 4.670	= 38.644 sqm
6	=	4.410 X 7.520	= 33.163 sqm
7	=	3.915 X 6.455	= 25.271 sqm
8	=	1.300 X 0.615	= 0.800 sqm
9	=	3.310 X 7.270	= 24.064 sqm
10	=	2.260 X 8.350	= 18.871 sqm
TOTAL = 237.919 sqm			

F.A.R AREA ON GROUND FLOOR (TOWER-A&C) = ADDITION (1) = 237.919 Sqm.

ADDITION - 2			
11	=	3.975 X 5.230	= 20.789 sqm
12	=	3.810 X 3.207	= 12.585 sqm
13	=	0.577 X 1.068	= 0.616 sqm
14	=	3.310 X 3.948	= 13.088 sqm
15	=	2.030 X 7.850	= 15.930 sqm
TOTAL = 62.986 sqm			

F.A.R AREA ON GROUND FLOOR (TOWER-B) = ADDITION (2) = 62.986 Sqm.

ADDITION - 3 (COMMUNITY CENTER)			
C01	=	4.945 X 0.680	= 3.363 sqm
C02	=	6.810 X 1.800	= 12.258 sqm
C03	=	10.390 X 10.270	= 106.705 sqm
C04	=	2.157 X 2.139	= 4.614 sqm
C05	=	1.500 X 1.068	= 1.597 sqm
C06	=	2.765 X 4.313	= 11.925 sqm
C07	=	3.310 X 0.385	= 1.268 sqm
C08	=	15.615 X 4.670	= 72.922 sqm
C09	=	2 X 0.070 X 0.230	= 0.032 sqm
C010	=	13.860 X 1.910	= 26.473 sqm
C011	=	2.030 X 4.540	= 9.216 sqm
C012	=	12.308 X 4.670	= 57.464 sqm
C013	=	8.440 X 5.490	= 46.338 sqm
C014	=	2.095 X 2.030	= 4.253 sqm
C015	=	4.715 X 5.625	= 26.592 sqm
TOTAL = 384.978 sqm			

F.A.R AREA ON GROUND FLOOR (COMMUNITY BUILDING-1) = ADDITION (3) = 384.978 Sqm.

ADDITION - 4 (GROUND COVERAGE)			
g1	=	6.670 X 5.230	= 34.884 sqm
g2	=	2 X 0.850 X 0.850	= 1.445 sqm
g3	=	2 X 5.675 X 5.230	= 59.361 sqm
g4	=	4.715 X 10.160	= 47.904 sqm
g5	=	2 X 8.275 X 4.670	= 77.289 sqm
g6	=	2 X 4.410 X 7.520	= 66.326 sqm
g7	=	13.400 X 12.190	= 163.346 sqm
g8	=	13.860 X 1.910	= 26.473 sqm
g9	=	2 X 0.070 X 0.230	= 0.032 sqm
g10	=	4.715 X 12.750	= 60.116 sqm
TOTAL = 537.176 sqm			

GROUND COVERAGE (TOWER-B) = ADDITION (4) = 537.176 Sqm.

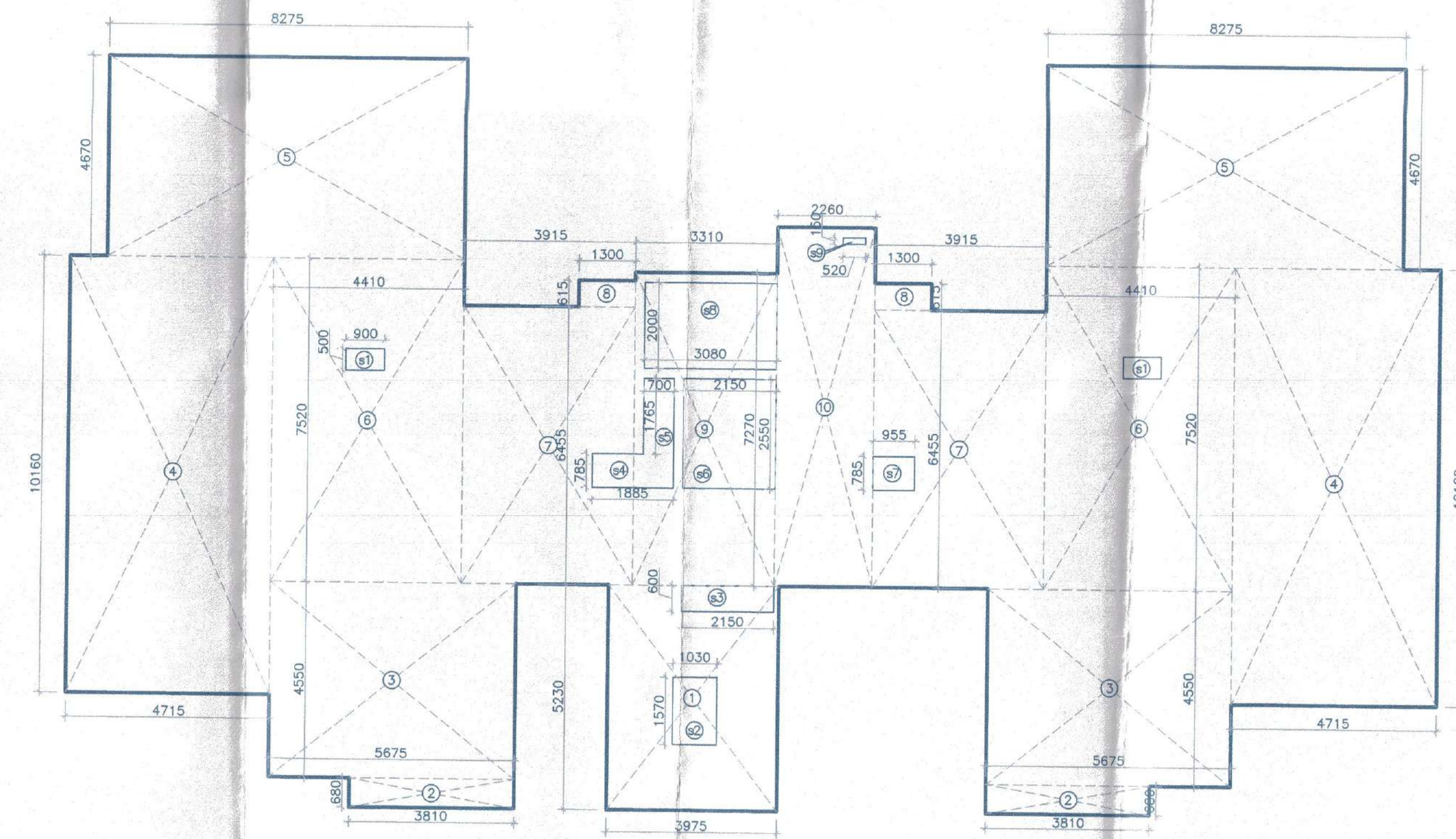
ADDITION - 5 (GROUND COVERAGE)			
g1	=	6.670 X 5.230	= 34.884 sqm
g2	=	2 X 0.850 X 0.850	= 1.445 sqm
g3	=	2 X 5.675 X 5.230	= 59.361 sqm
g4	=	2 X 4.715 X 10.160	= 95.809 sqm
g5	=	2 X 8.275 X 4.670	= 77.289 sqm
g6	=	2 X 4.410 X 7.520	= 66.326 sqm
g7	=	13.400 X 6.455	= 86.497 sqm
g8	=	8.170 X 1.315	= 10.744 sqm
g9	=	5.570 X 0.580	= 3.231 sqm
TOTAL = 435.584 sqm			

GROUND COVERAGE (TOWER-A&C) = ADDITION (5) = 435.584 Sqm.

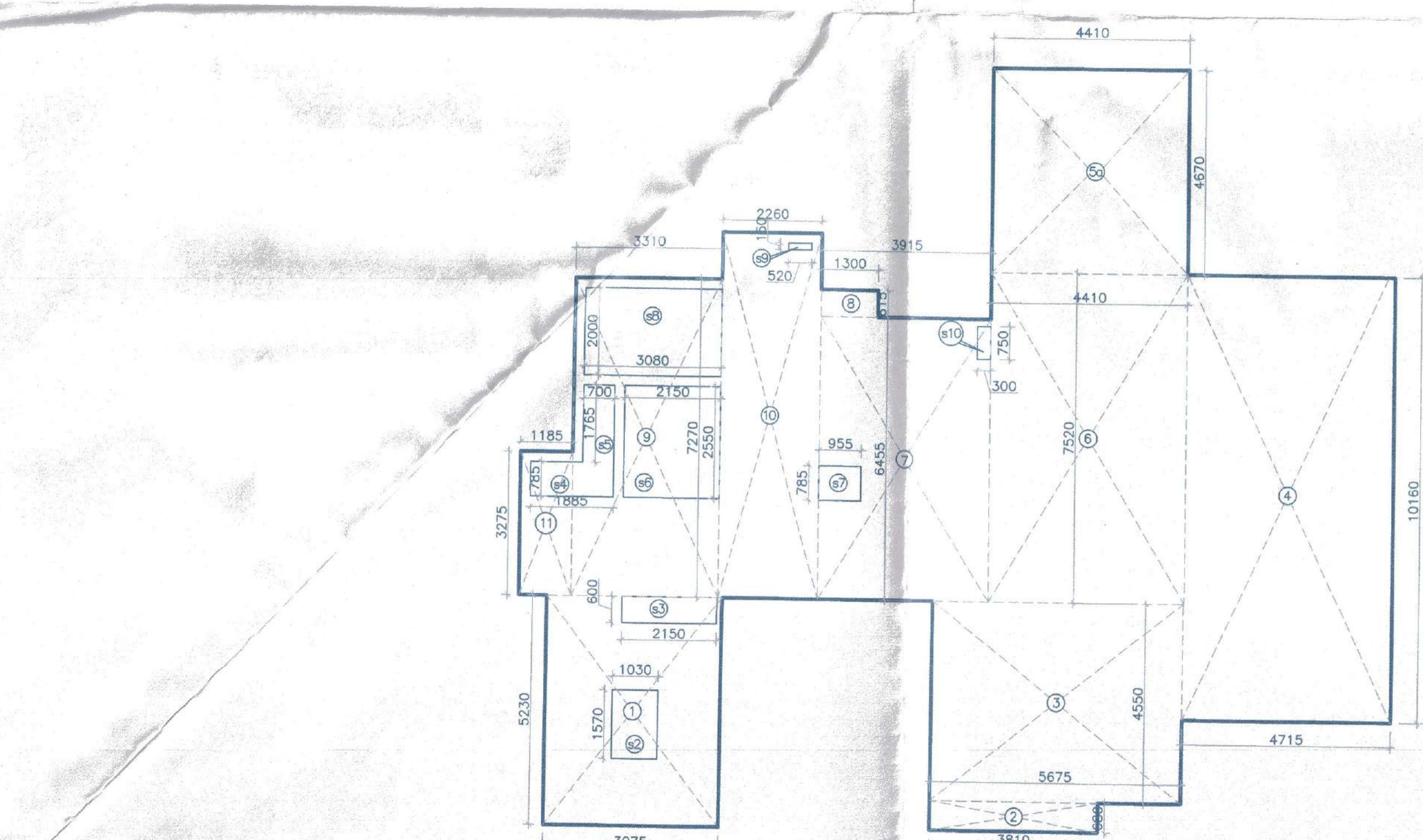
ADDITION - 6			
1	=	3.975 X 5.230	= 20.789 sqm
2	=	2 X 3.810 X 0.680	= 5.182 sqm
3	=	2 X 5.675 X 4.500	= 51.542 sqm
4	=	2 X 4.715 X 10.160	= 95.809 sqm
5	=	2 X 8.275 X 4.670	= 77.289 sqm
6	=	2 X 4.410 X 7.520	= 66.326 sqm
7	=	2 X 3.915 X 6.455	= 50.543 sqm
8	=	2 X 1.300 X 0.615	= 1.599 sqm
9	=	3.310 X 7.270	= 24.064 sqm
10	=	2.260 X 8.350	= 18.871 sqm
TOTAL = 412.113 sqm			

DEDUCTION - 7 (SHAFT)			
s1	=	2 X 0.900 X 0.500	= 0.900 sqm
s2	=	1.030 X 1.570	= 1.617 sqm
s3	=	2.150 X 0.600	= 1.290 sqm
s4	=	1.885 X 0.785	= 1.480 sqm
s5	=	0.700 X 1.765	= 1.236 sqm
s6	=	2.150 X 2.550	= 5.482 sqm
s7	=	0.955 X 0.785	= 0.750 sqm
s8	=	3.080 X 2.000	= 6.160 sqm
s9	=	0.520 X 0.150	= 0.078 sqm
TOTAL = 18.993 sqm			

F.A.R AREA ON TYPICAL FLOOR (TOWER-A&C) = ADDITION (6) - DEDUCTION (7) = 412.113 - 18.993 = 393.12 Sqm.



TYPICAL FLOOR
1st TO 19th FLOOR
(TOWER-A,B&C)



20th FLOOR
(TOWER-A,B&C)

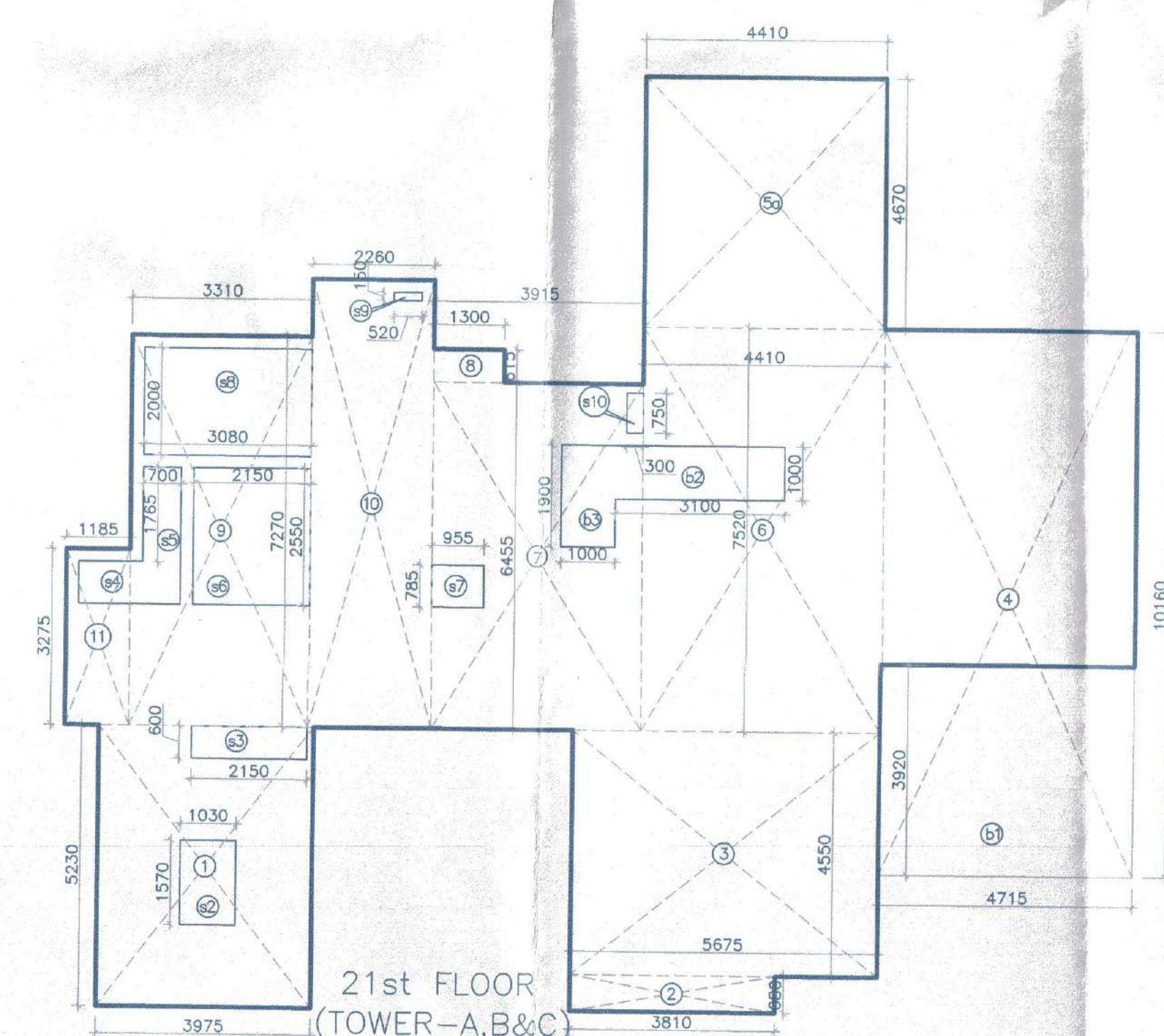
ADDITION - 8			
1	=	3.975 X 5.230	= 20.789 sqm
2	=	3.810 X 0.680	= 2.591 sqm
3	=	5.675 X 4.500	= 25.521 sqm
4	=	4.715 X 10.160	= 47.904 sqm
5a	=	4.410 X 4.670	= 20.595 sqm
6	=	4.410 X 7.520	= 33.163 sqm
7	=	3.915 X 6.455	= 25.271 sqm
8	=	1.300 X 0.615	= 0.800 sqm
9	=	3.310 X 7.270	= 24.064 sqm
10	=	2.260 X 8.350	= 18.871 sqm
11	=	1.185 X 3.275	= 3.881 sqm
TOTAL = 223.750 sqm			

DEDUCTION - 9 (SHAFT)			
s2	=	1.030 X 1.570	= 1.617 sqm
s3	=	2.150 X 0.600	= 1.290 sqm
s4	=	1.885 X 0.785	= 1.480 sqm
s5	=	0.700 X 1.765	= 1.236 sqm
s6	=	2.150 X 2.550	= 5.482 sqm
s7	=	0.955 X 0.785	= 0.750 sqm
s8	=	3.080 X 2.000	= 6.160 sqm
s9	=	0.520 X 0.150	= 0.078 sqm
s10	=	0.300 X 0.750	= 0.225 sqm
TOTAL = 18.318 sqm			

F.A.R AREA ON 20th FLOOR (TOWER-A&C) = ADDITION (8) - DEDUCTION (9) = 223.750 - 18.318 = 205.432 Sqm.

DEDUCTION - 10			
b1	=	4.715 X 3.920	= 18.483 sqm
b2	=	3.100 X 1.000	= 3.100 sqm
b3	=	1.000 X 1.900	= 1.900 sqm
TOTAL = 23.483 sqm			

F.A.R AREA ON 21st FLOOR (TOWER-A&C) = F.A.R AREA OF 20th FLOOR - DEDUCTION (10) = 205.432 - 23.483 = 181.949 Sqm.



21st FLOOR
(TOWER-A,B&C)

Note :-

1. BUILDING WILL BE DESIGNED (STRUCTURES) AS PER RELEVANT IS CODES FOR EARTH QUAKE RESISTANCE.

2. TOILETS WILL NATURAL VENTILATION WILL HAVE MECHANICAL VENTILATION

LEGEND :-

Project:

PROPOSED BUILDING PLAN OF GROUP HOUSING MEASURING 10.43125 ACRES (LICENCE NO. 65 OF 2013 DATED 20-07-2013) & (LICENCE NO. 119 OF 2012 DATED 06.12.2012) IN SECTOR-99, GURGAON MANESAR URBAN COMPLEX BEING DEVELOPED BY PLANET EARTH ESTATES PVT. LTD.

Associate Architects



RSMS ARCHITECTS PVT. LTD.

69, Nora Niwas, Bhawani Kunj (Behind D2), Vasant Kunj, New Delhi-110070. Tel.: 011-26898616, 26898617 www.rsms-arch.com

(Signature)
DTP (HOD) Member/Secretary B.P.C.
(Signature)
Member B.P.C.
(Signature)
Chairman B.P.C.

ARCHITECT'S SEAL & SIGNATURE

OWNER'S SEAL & SIGNATURE



For Planet Earth Estates Pvt. Ltd.
(Signature)
Authorised Signatory

DECEMBER.2013

Scale : 1:100

N

Drawing Title:-

Drawing No:-

AREA CALCULATION OF ALL FLOOR PLAN TOWER-A,B,COMMUNITY BUILDING-1

TA-10-

VATIKA SOVEREIGN PARK