

TITLE:
 APPROVAL OF DEMARCATION PLAN OF PROPOSED COMMERCIAL COLONY, OVER AN AREA MEASURING 3.99 ACRES IN THE REVENUE ESTATE OF VILLAGE BADHA, SECTOR-90, GURUGRAM MANESAR URBAN COMPLEX DEVELOPED BY NORTH STAR TOWERS PVT. LTD., MATRIX BUILDWELL PVT. LTD IN COLLABORATION WITH SS GROUP PVT. LTD.
 (Formerly Known as North Star Apartments Pvt. Ltd.)

AREA DETAIL

S.NO.	Length (in M)	Width (in M)	Area
1	78.56	17.47	686.22
2	$(39.51+2.92+14.51)/2=28.47$	74.01	2107.06
3	2.92	1.72	2.51
4	1.60	2.72	2.18
5	14.51	4.44	64.42
6	16.11	53.99	434.89
7	39.05	132.44	5171.78
8	97.23	149.91	7287.87
Total Plot Area - X			15756.94

Area Under Road Detail

a	$(14.7+11.31)/2=13.005$	5.76	74.91
b	14.70	4.77	35.06
c	6.20	10.53	32.64
d	28.64	3.59	51.41
e	$(28.64+31.19)/2=29.915$	5.91	176.80
f	8.00	9.50	38.00
Total Area 12 m Wide Service Road - Y			408.82
Total Plot Area (X+Y)			16165.76
Area in Acres			3.99

NORTH STAR TOWERS PVT. LTD.
 RECT. NO. 22/14/2 min (2-9), 15/2/2/1 (1-12), 17min (4-3)
 TOTAL = 8K-4M

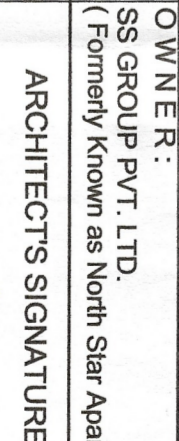
MATRIX BUILDWELL PVT. LTD
 RECT. NO. 23/19/2/2/1 (1-2), 20/2/1/1 (6-14), 20/2/1/2 (0-9),
 21/1 (1-9), 22/15/2/1 (1-4), 15/2/2/2 (2-4), 16 (8-0),
 25/1/1 min (2-13) TOTAL 23K-15M

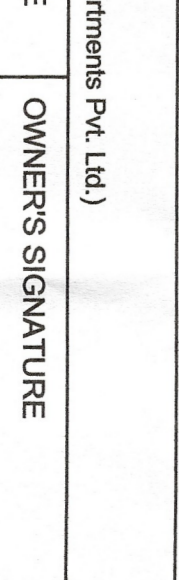
G TOTAL = 31K-19M OR 3.99 ACRES

NOTES
 1. ALL DIMENSIONS ARE IN METERS
 2. THE NORTH LINE INDICATED IS A MAGNETIC NORTH DIRECTION

OWNER:
 SS GROUP PVT. LTD.
 (Formerly Known as North Star Apartments Pvt. Ltd.)

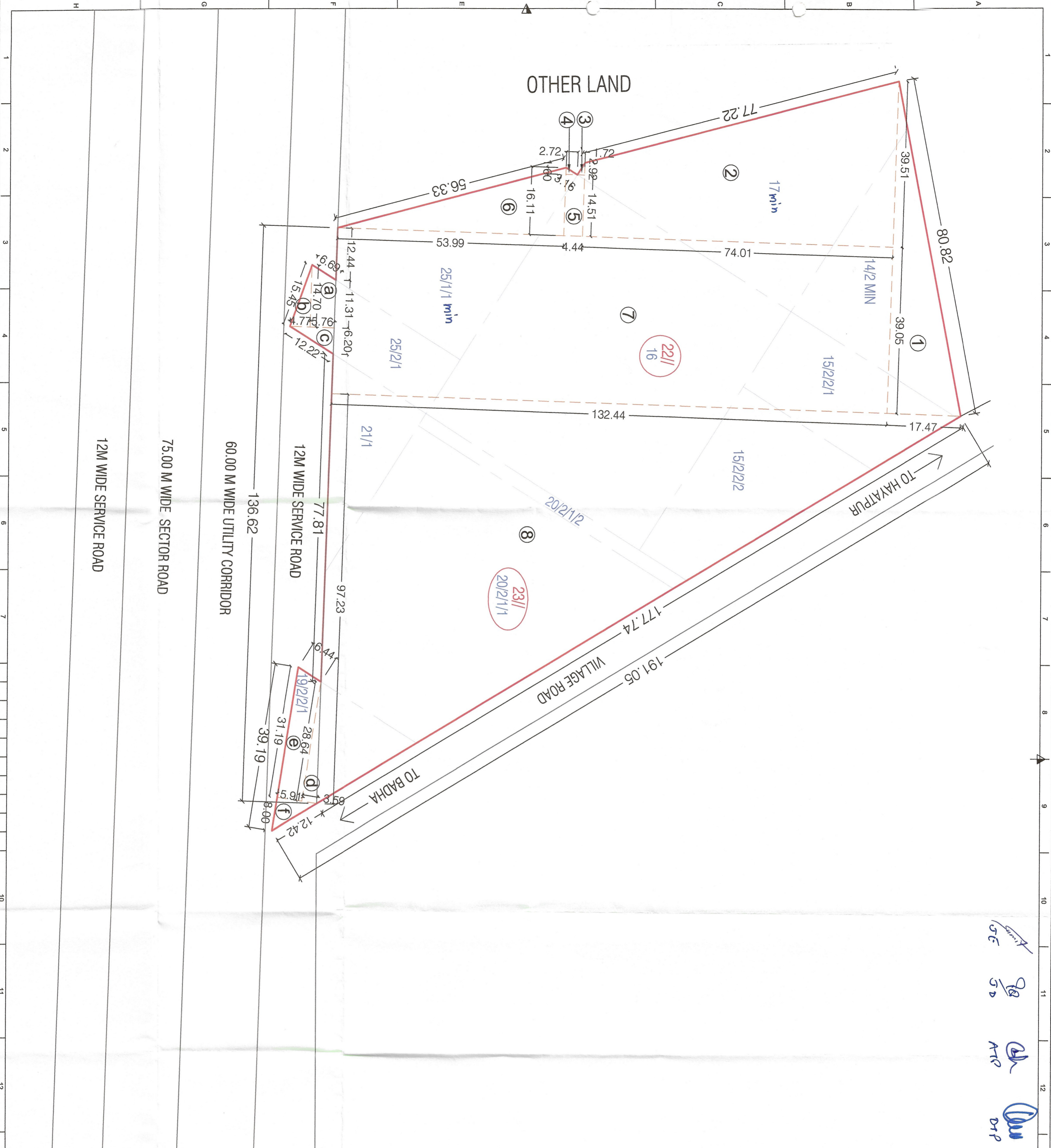
DATE : 20.03.2023
DWG NO : SS-DM-COMM-90-P-01
SCALE : 1 : 100

ARCHITECTS SIGNATURE


OWNERS SIGNATURE


Ar. KAPIL SINGH
 B. Arch.
 Regn. No. with Council of Architecture CA/2003/3104K

For SS Group Pvt. Ltd.
 Authorized Signatory



12M WIDE SERVICE ROAD
 75.00 M WIDE SECTOR ROAD
 60.00 M WIDE UTILITY CORRIDOR
 12M WIDE SERVICE ROAD