

PHASE	TOTAL AREA			TOTAL AREA	TOTAL AREA			TOTAL AREA	TOTAL AREA		
	PLANNED	EXISTING	NET PLANNED		PLANNED	EXISTING	NET PLANNED		PLANNED	EXISTING	NET PLANNED
PHASE 1	1500	1500	1500	1500	1500	1500	1500	1500	1500	1500	
PHASE 2	1500	1500	1500	1500	1500	1500	1500	1500	1500	1500	
PHASE 3	1500	1500	1500	1500	1500	1500	1500	1500	1500	1500	
PHASE 4	1500	1500	1500	1500	1500	1500	1500	1500	1500	1500	
PHASE 5	1500	1500	1500	1500	1500	1500	1500	1500	1500	1500	

AREA STATEMENT

LICENSED AREA OF SITE
 AREA OF SITE AS PER ZONING
 PERMISSIBLE F.A.R 175%
 PERMISSIBLE OPEN SPACE 14 TO 10% REQUIRED
 PROPOSED F.A.R 80% (175%)

PERMISSIBLE GROUND COVERAGE 60%
 PROPOSED GROUND COVERAGE

PERMISSIBLE AREA OF CONVENIENCE SHOPPING @ 0.2%
 PROPOSED AREA OF CONVENIENCE SHOPPING

PERMISSIBLE DENSITY = 100 TO 420 PPA
 PROPOSED DENSITY = 248/9.53 = 25.97 PPA

REQUIRED PUBLIC AMENITIES
 REQUIRED SEWAGE TREATMENT PLANT
 REQUIRED SEWAGE TREATMENT PLANT

REQUIRED CAR PARKING FOR MAIN UNITS
 CAR PARKING TO BE MADE AVAILABLE TO EWS UNITS
 CAR PARKING CAPACITY ON SURFACE
 PROPOSED CAR PARKING ON SURFACE

POPULATION CALCULATION
 MAIN UNITS
 SEWANTS
 ORGANIZED OPEN SPACE 14 TO 10% REQUIRED
 ORGANIZED OPEN SPACE 14 TO 10% PROVIDED
 CAR PARKING CAPACITY
 PROPOSED CAR PARKING FOR MAIN UNITS
 CAR PARKING TO BE MADE AVAILABLE TO EWS UNITS
 CAR PARKING CAPACITY ON SURFACE
 PROPOSED CAR PARKING ON SURFACE

CARS PROPOSED
 BASEMENT-1 (PHASE-1) = 839
 SURFACE (PHASE-1&2) = 16
 SURFACE HANDICAPPED = 08
 BASEMENT-1 (PHASE-2) = 171
 BASEMENT-1 (PHASE-3) = 1708
 TOTAL

Handicapped Parking Calculation
 1/100th of Total Car Parking
 1/50th of Total Car Parking

Surface Car Parking Calculation (EWS)
 7% of Total Car Parking Area
 37.19% EWS

Handicapped Parking Calculation
 1/100th of Total Car Parking
 1/50th of Total Car Parking

Surface Car Parking Calculation (EWS)
 7% of Total Car Parking Area
 37.19% EWS

Handicapped Parking Calculation
 1/100th of Total Car Parking
 1/50th of Total Car Parking

Surface Car Parking Calculation (EWS)
 7% of Total Car Parking Area
 37.19% EWS

Handicapped Parking Calculation
 1/100th of Total Car Parking
 1/50th of Total Car Parking

Surface Car Parking Calculation (EWS)
 7% of Total Car Parking Area
 37.19% EWS

Handicapped Parking Calculation
 1/100th of Total Car Parking
 1/50th of Total Car Parking

Surface Car Parking Calculation (EWS)
 7% of Total Car Parking Area
 37.19% EWS

Handicapped Parking Calculation
 1/100th of Total Car Parking
 1/50th of Total Car Parking

Surface Car Parking Calculation (EWS)
 7% of Total Car Parking Area
 37.19% EWS

Handicapped Parking Calculation
 1/100th of Total Car Parking
 1/50th of Total Car Parking

Surface Car Parking Calculation (EWS)
 7% of Total Car Parking Area
 37.19% EWS

Handicapped Parking Calculation
 1/100th of Total Car Parking
 1/50th of Total Car Parking

Surface Car Parking Calculation (EWS)
 7% of Total Car Parking Area
 37.19% EWS

Handicapped Parking Calculation
 1/100th of Total Car Parking
 1/50th of Total Car Parking

Surface Car Parking Calculation (EWS)
 7% of Total Car Parking Area
 37.19% EWS

Handicapped Parking Calculation
 1/100th of Total Car Parking
 1/50th of Total Car Parking

Surface Car Parking Calculation (EWS)
 7% of Total Car Parking Area
 37.19% EWS

Handicapped Parking Calculation
 1/100th of Total Car Parking
 1/50th of Total Car Parking

Surface Car Parking Calculation (EWS)
 7% of Total Car Parking Area
 37.19% EWS

Handicapped Parking Calculation
 1/100th of Total Car Parking
 1/50th of Total Car Parking

Surface Car Parking Calculation (EWS)
 7% of Total Car Parking Area
 37.19% EWS

Handicapped Parking Calculation
 1/100th of Total Car Parking
 1/50th of Total Car Parking

Surface Car Parking Calculation (EWS)
 7% of Total Car Parking Area
 37.19% EWS

Handicapped Parking Calculation
 1/100th of Total Car Parking
 1/50th of Total Car Parking

Surface Car Parking Calculation (EWS)
 7% of Total Car Parking Area
 37.19% EWS

Handicapped Parking Calculation
 1/100th of Total Car Parking
 1/50th of Total Car Parking

Surface Car Parking Calculation (EWS)
 7% of Total Car Parking Area
 37.19% EWS

Handicapped Parking Calculation
 1/100th of Total Car Parking
 1/50th of Total Car Parking

Surface Car Parking Calculation (EWS)
 7% of Total Car Parking Area
 37.19% EWS

Handicapped Parking Calculation
 1/100th of Total Car Parking
 1/50th of Total Car Parking

Surface Car Parking Calculation (EWS)
 7% of Total Car Parking Area
 37.19% EWS

Handicapped Parking Calculation
 1/100th of Total Car Parking
 1/50th of Total Car Parking

Surface Car Parking Calculation (EWS)
 7% of Total Car Parking Area
 37.19% EWS

Handicapped Parking Calculation
 1/100th of Total Car Parking
 1/50th of Total Car Parking

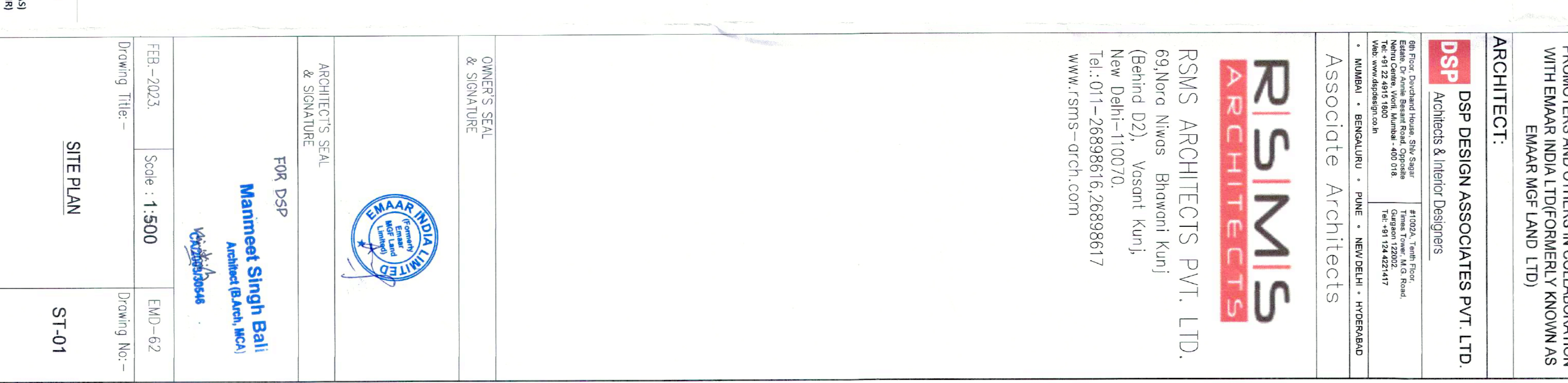
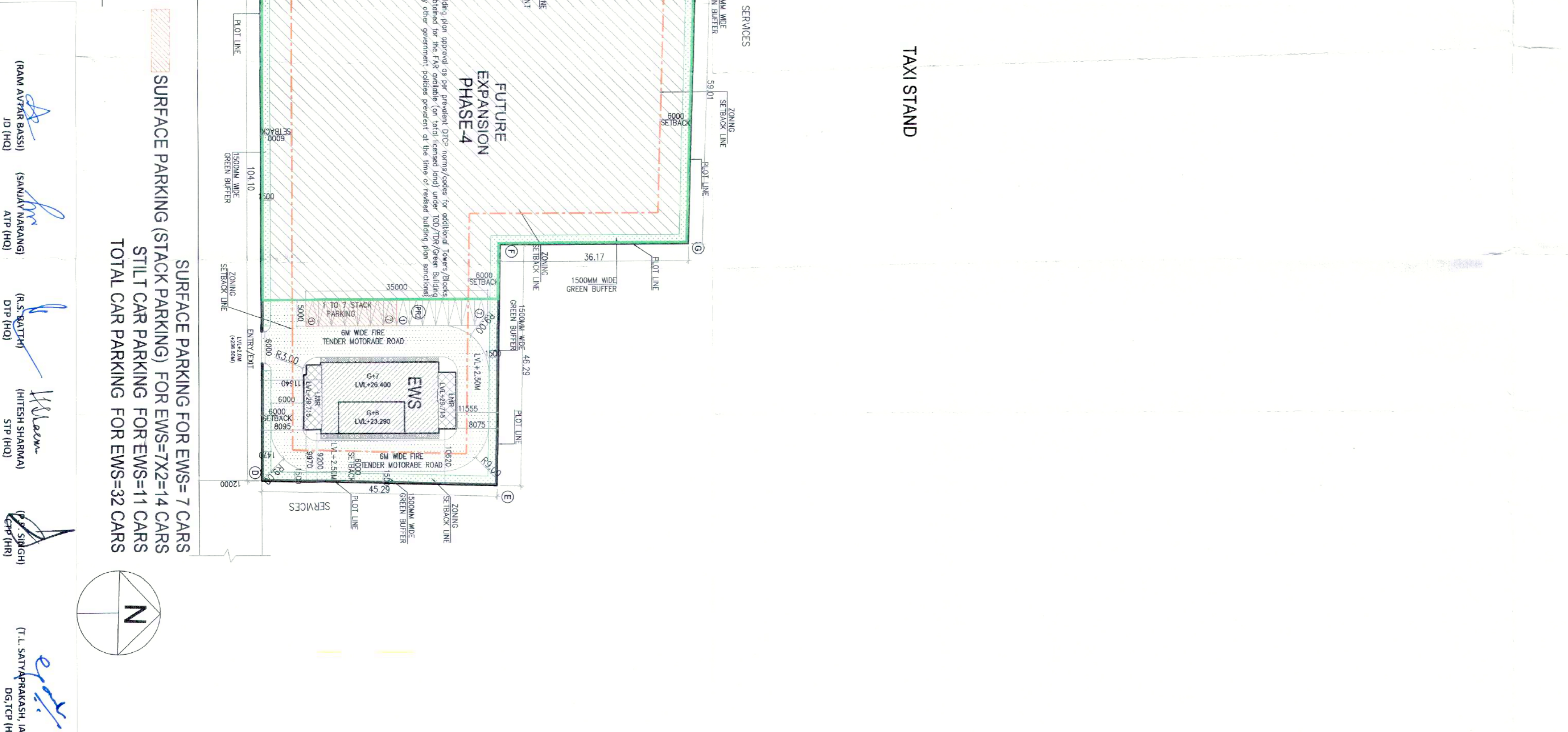
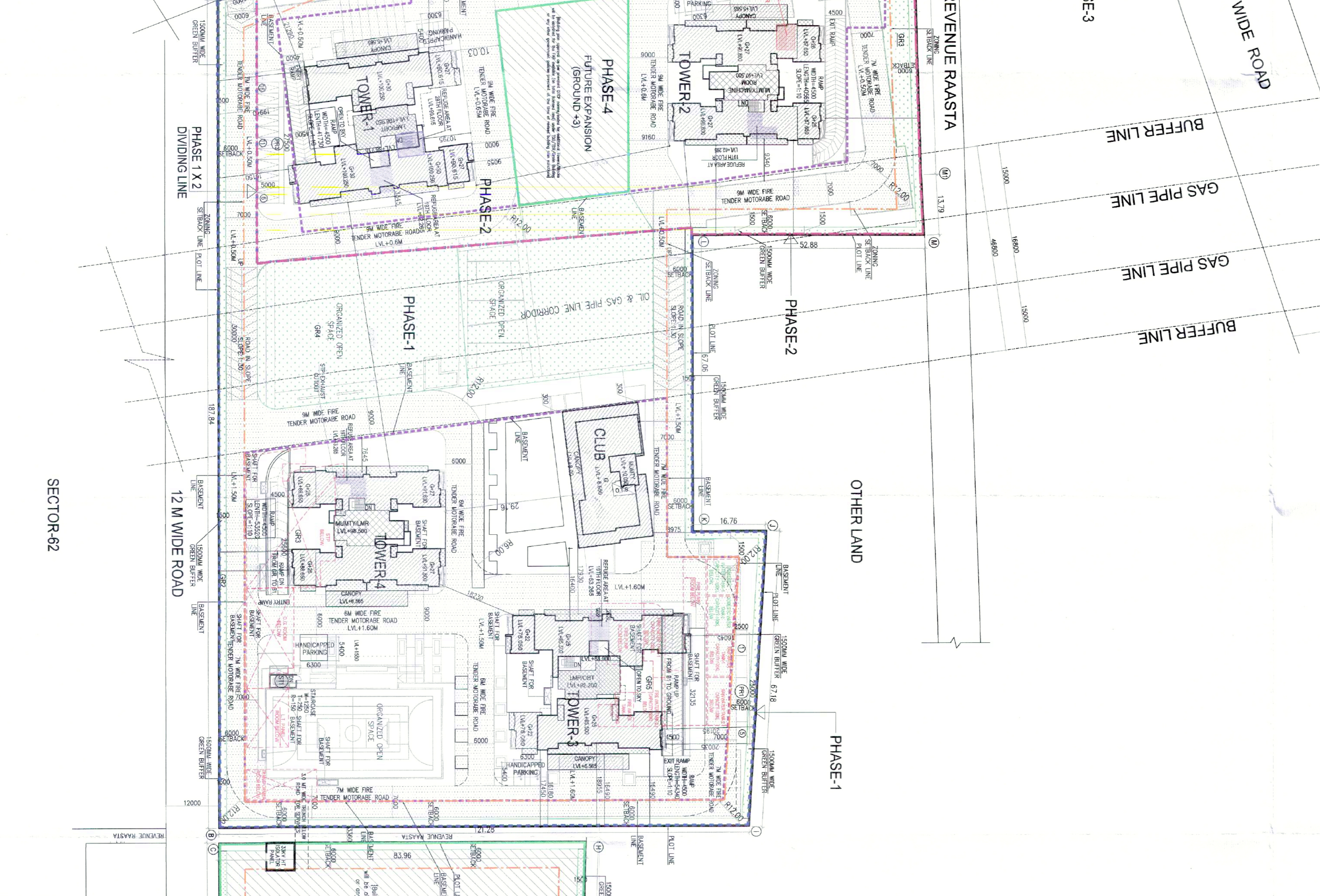
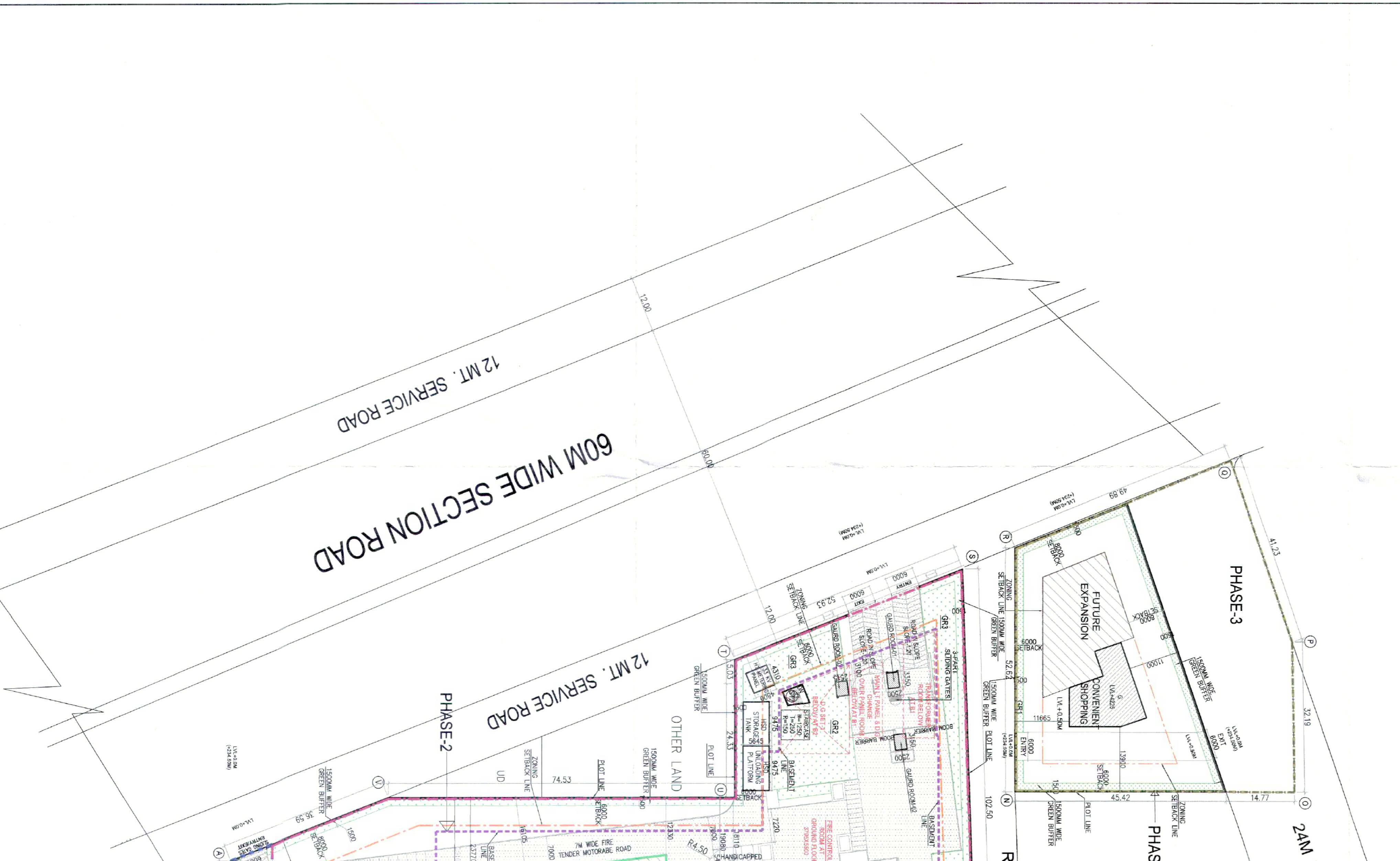
Surface Car Parking Calculation (EWS)
 7% of Total Car Parking Area
 37.19% EWS

Handicapped Parking Calculation
 1/100th of Total Car Parking
 1/50th of Total Car Parking

Surface Parking for EWS = 7 Cars
 Surface Parking (Stack Parking) for EWS = 7x2=14 Cars
 Still Car Parking for EWS = 11 Cars
 Total Car Parking for EWS = 32 Cars

Surface Parking for EWS = 7 Cars
 Surface Parking (Stack Parking) for EWS = 7x2=14 Cars
 Still Car Parking for EWS = 11 Cars
 Total Car Parking for EWS = 32 Cars

Surface Parking for EWS = 7 Cars
 Surface Parking (Stack Parking) for EWS = 7x2=14 Cars
 Still Car Parking for EWS = 11 Cars
 Total Car Parking for EWS = 32 Cars



Note :-
 1. BUILDING WILL BE DESIGNED (STRUCTURES) AS PER RELEVANT IS CODES FOR EARTH QUAKE RESISTANCE.
 2. BUILDING IS HAS AUTOMATIC SPRINKLER SYSTEM ON ALL FLOORS.

LEGEND :-

PROPOSED GROUP HOUSING SITE MEASURING 9.53 ACRES IN RESIDENTIAL PLOTTED COLONY MEASURING 177.86 ACRES LICENSE NO. 10 OF 2009 DATED 07.21.05.2009 LICENSE NO. 113 OF 2011 DATED 22.12.2011 & LICENSE NO. 117 OF 2022 DATED 23.08.2022 IN SECTOR 65 & 62 GURURAM BEING DEVELOPED BY ACTIVE PROMOTERS AND OTHERS IN COLLABORATION WITH EMAAR INDIA LTD FORMERLY KNOWN AS EMAAR MGF LAND LTD)
 ARCHITECT :-
 DSP DESIGN ASSOCIATES PVT. LTD.
 Architects & Interior Designers
 Associate Architects
 Associate Architects

RSMIS ARCHITECTS PVT. LTD.
 69, Nore Nivas, Bhowani Kunj
 (Behind D2), Vasant Kunj,
 New Delhi - 110070.
 Tel.: 011-26898616, 26898617
 WWW.RSMIS-DICTION.COM

OWNER'S SEAL & SIGNATURE
 ARCHITECT'S SEAL & SIGNATURE
 FOR DSP
 Mandeet Singh Bahl
 Architect (RSMIS, MCA)
 FBB-2023 Scale - 1:500
 Drawing No - ST-01
 Drawing Title - SITE PLAN
 Drawing No - EMU-62