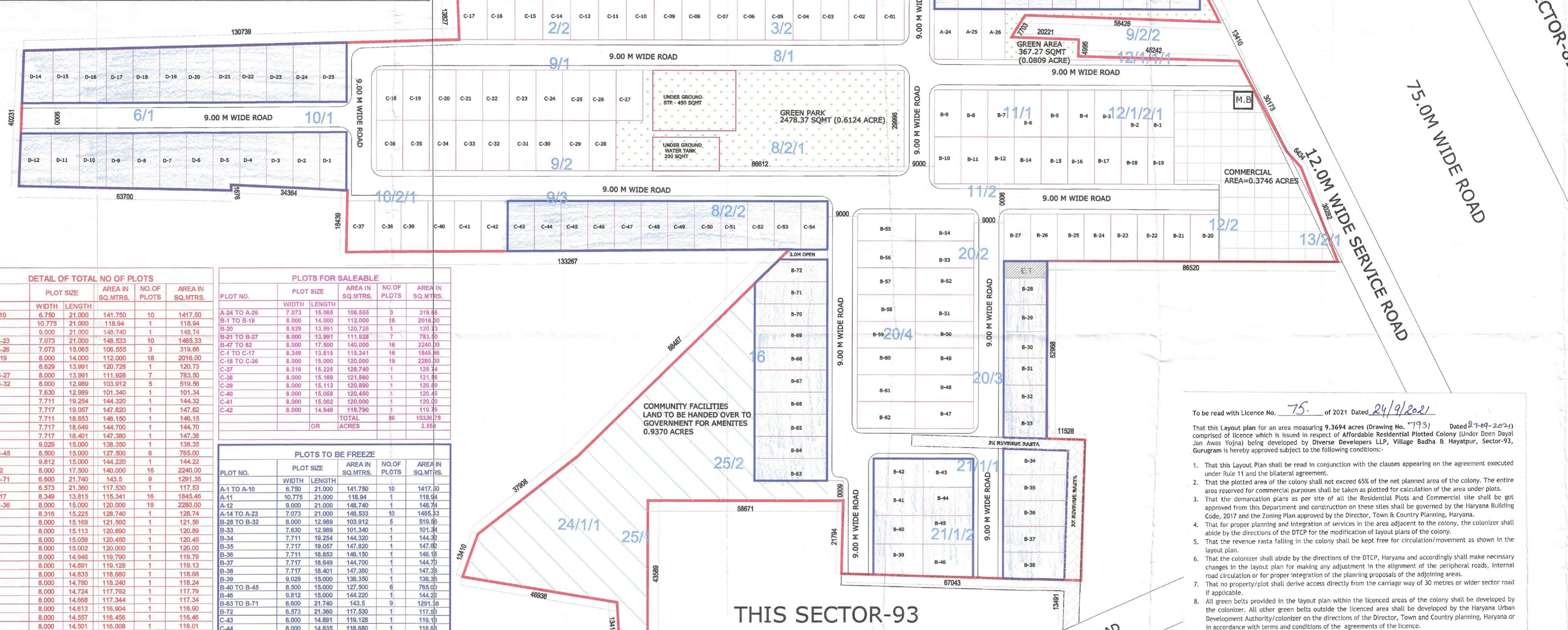


AREA STATEMENT

TOTAL PLOT AREA	9.3694	ACRES OR	37916.556	SQ. MTRS.
PERMISSIBLE	61.00 %	ACRE	ACRE	57.95%
MAX PERMISSIBLE AREA UNDER PLOTTING	61.00 %	ACRE	ACRE	57.95%
AREA FOR COMMON FACILITIES TO BE HANDED OVER TO GOVT.	10.00 %	0.9369	0.9370	10%
MIN GREEN AREA	7.5 %	0.7027	0.7030	7.51%
COMMERCIAL AREA	4.00 %	0.3748	0.3746	4.0%
NO. OF PLOTS				173
OCCUPANCY PER DWELLING PLOT				18.0
TOTAL POPULATION		PERSONS		
DENSITY	240-400	PPA		332.36%

THIS SECTOR-93



DETAIL OF TOTAL NO OF PLOTS

PLOT NO.	WIDTH	LENGTH	AREA IN SQ.MTRS.	NO. OF PLOTS	AREA IN SQ.MTRS.
A-1 TO A-10	6.750	21.000	141.750	10	1417.50
A-11	10.775	21.000	226.375	1	2263.75
A-12	9.000	21.000	189.000	1	1890.00
A-14 TO A-23	7.073	21.000	148.533	10	1485.33
A-24 TO A-26	7.073	15.065	106.555	3	319.66
B-1 TO B-19	8.000	14.000	112.000	18	2016.00
B-20	8.629	13.991	120.728	1	120.73
B-21 TO B-27	8.000	13.991	111.928	7	783.50
B-28 TO B-32	8.000	12.989	103.912	5	519.56
B-33	7.630	12.989	101.340	1	101.34
B-34	7.711	19.254	148.320	1	148.32
B-35	7.711	19.057	147.820	1	147.82
B-36	7.711	18.953	146.150	1	146.15
B-37	7.711	18.949	146.700	1	146.70
B-38	7.711	18.401	141.750	1	141.75
B-39	9.029	15.000	135.450	1	135.45
B-40 TO B-45	8.500	15.000	127.500	6	765.00
B-46	8.812	15.000	132.180	1	132.18
B-47 TO B-51	8.000	17.500	140.000	5	700.00
B-52 TO B-57	6.600	21.740	143.520	6	861.12
B-58	6.573	21.360	140.320	1	140.32
C-1 TO C-17	8.349	13.815	115.341	16	1845.46
C-18 TO C-36	8.000	15.000	120.000	19	2280.00
C-37	8.316	15.225	126.740	1	126.74
C-38	8.000	15.169	121.352	1	121.35
C-39	8.000	15.113	120.912	1	120.91
C-40	8.000	15.068	120.544	1	120.54
C-41	8.000	15.002	120.012	1	120.01
C-42	8.000	14.946	119.572	1	119.57
C-43	8.000	14.891	119.132	1	119.13
C-44	8.000	14.835	118.692	1	118.69
C-45	8.000	14.779	118.252	1	118.25
C-46	8.000	14.723	117.812	1	117.81
C-47	8.000	14.667	117.372	1	117.37
C-48	8.000	14.611	116.932	1	116.93
C-49	8.000	14.555	116.492	1	116.49
C-50	8.000	14.500	116.052	1	116.05
C-51	8.000	14.444	115.612	1	115.61
C-52	8.000	14.388	115.172	1	115.17
C-53	8.000	14.332	114.732	1	114.73
C-54	8.000	14.276	114.292	1	114.29
D-1	8.000	17.395	139.160	1	139.16
D-2	8.000	16.966	135.728	1	135.73
D-3	8.000	16.536	132.296	1	132.30
D-4	8.000	16.106	128.864	1	128.86
D-5	8.000	15.676	125.432	1	125.43
D-6	8.000	15.246	122.000	1	122.00
D-7	8.000	14.816	118.568	1	118.57
D-8	8.000	14.386	115.136	1	115.14
D-9	8.000	13.956	111.704	1	111.70
D-10	8.000	13.526	108.272	1	108.27
D-11	8.000	13.096	104.840	1	104.84
D-12	9.127	15.902	145.138	1	145.14
D-13	9.290	15.874	147.469	1	147.47
D-14	8.000	16.068	128.544	1	128.54
D-15	8.000	16.261	130.088	1	130.09
D-16	8.000	16.454	131.632	1	131.63
D-17	8.000	16.647	133.176	1	133.18
D-18	8.000	16.840	134.720	1	134.73
D-19	8.000	17.033	136.264	1	136.26
D-20	8.000	17.226	137.808	1	137.81
D-21	8.000	17.419	139.352	1	139.35
D-22	8.000	17.612	140.896	1	140.90
D-23	8.000	17.805	142.440	1	142.44
D-24	8.000	18.000	144.000	1	144.00
D-25	8.000	18.001	144.008	1	144.01
TOTAL				173	21972.58
OR					5.430

PLOTS FOR SALEABLE

PLOT NO.	WIDTH	LENGTH	AREA IN SQ.MTRS.	NO. OF PLOTS	AREA IN SQ.MTRS.
A-24 TO A-26	7.073	15.065	106.555	3	319.66
B-1 TO B-19	8.000	14.000	112.000	18	2016.00
B-20	8.629	13.991	120.728	1	120.73
B-21 TO B-27	8.000	13.991	111.928	7	783.50
B-28 TO B-32	8.000	12.989	103.912	5	519.56
B-33	7.630	12.989	101.340	1	101.34
B-34	7.711	19.254	148.320	1	148.32
B-35	7.711	19.057	147.820	1	147.82
B-36	7.711	18.953	146.150	1	146.15
B-37	7.711	18.949	146.700	1	146.70
B-38	7.711	18.401	141.750	1	141.75
B-39	9.029	15.000	135.450	1	135.45
B-40 TO B-45	8.500	15.000	127.500	6	765.00
B-46	8.812	15.000	132.180	1	132.18
B-47 TO B-51	8.000	17.500	140.000	5	700.00
B-52 TO B-57	6.600	21.740	143.520	6	861.12
B-58	6.573	21.360	140.320	1	140.32
C-1 TO C-17	8.349	13.815	115.341	16	1845.46
C-18 TO C-36	8.000	15.000	120.000	19	2280.00
C-37	8.316	15.225	126.740	1	126.74
C-38	8.000	15.169	121.352	1	121.35
C-39	8.000	15.113	120.912	1	120.91
C-40	8.000	15.068	120.544	1	120.54
C-41	8.000	15.002	120.012	1	120.01
C-42	8.000	14.946	119.572	1	119.57
C-43	8.000	14.891	119.132	1	119.13
C-44	8.000	14.835	118.692	1	118.69
C-45	8.000	14.779	118.252	1	118.25
C-46	8.000	14.723	117.812	1	117.81
C-47	8.000	14.667	117.372	1	117.37
C-48	8.000	14.611	116.932	1	116.93
C-49	8.000	14.555	116.492	1	116.49
C-50	8.000	14.500	116.052	1	116.05
C-51	8.000	14.444	115.612	1	115.61
C-52	8.000	14.388	115.172	1	115.17
C-53	8.000	14.332	114.732	1	114.73
C-54	8.000	14.276	114.292	1	114.29
D-1	8.000	17.395	139.160	1	139.16
D-2	8.000	16.966	135.728	1	135.73
D-3	8.000	16.536	132.296	1	132.30
D-4	8.000	16.106	128.864	1	128.86
D-5	8.000	15.676	125.432	1	125.43
D-6	8.000	15.246	122.000	1	122.00
D-7	8.000	14.816	118.568	1	118.57
D-8	8.000	14.386	115.136	1	115.14
D-9	8.000	13.956	111.704	1	111.70
D-10	8.000	13.526	108.272	1	108.27
D-11	8.000	13.096	104.840	1	104.84
D-12	9.127	15.902	145.138	1	145.14
D-13	9.290	15.874	147.469	1	147.47
D-14	8.000	16.068	128.544	1	128.54
D-15	8.000	16.261	130.088	1	130.09
D-16	8.000	16.454	131.632	1	131.63
D-17	8.000	16.647	133.176	1	133.18
D-18	8.000	16.840	134.720	1	134.73
D-19	8.000	17.033	136.264	1	136.26
D-20	8.000	17.226	137.808	1	137.81
D-21	8.000	17.419	139.352	1	139.35
D-22	8.000	17.612	140.896	1	140.90
D-23	8.000	17.805	142.440	1	142.44
D-24	8.000	18.000	144.000	1	144.00
D-25	8.000	18.001	144.008	1	144.01
TOTAL				87	11835.80
OR					2.875

PLOTS TO BE FREEZE

PLOT NO.	WIDTH	LENGTH	AREA IN SQ.MTRS.	NO. OF PLOTS	AREA IN SQ.MTRS.
A-1 TO A-10	6.750	21.000	141.750	10	1417.50
A-11	10.775	21.000	226.375	1	2263.75
A-12	9.000	21.000	189.000	1	1890.00
A-14 TO A-23	7.073	21.000	148.533	10	1485.33
B-1 TO B-19	8.000	14.000	112.000	18	2016.00
B-20	8.629	13.991	120.728	1	120.73
B-21 TO B-27	8.000	13.991	111.928	7	783.50
B-28 TO B-32	8.000	12.989	103.912	5	519.56
B-33	7.630	12.989	101.340	1	101.34
B-34	7.711	19.254	148.320	1	148.32
B-35	7.711	19.057	147.820	1	147.82
B-36	7.711	18.953	146.150	1	146.15
B-37	7.711	18.949	146.700	1	146.70
B-38	7.711	18.401	141.750	1	141.75
B-39	9.029	15.000	135.450	1	135.45
B-40 TO B-45	8.500	15.000	127.500	6	765.00
B-46	8.812	15.000	132.180	1	132.18
B-47 TO B-51	8.000	17.500	140.000	5	700.00
B-52 TO B-57	6.600	21.740	143.520	6	861.12
B-58	6.573	21.360	140.320	1	140.32
C-1 TO C-17	8.349	13.815	115.341	16	1845.46
C-18 TO C-36	8.000	15.000	120.000	19	2280.00
C-37	8.316	15.225	126.740	1	126.74
C-38	8.000	15.169	121.352	1	121.35
C-39	8.000	15.113	120.912	1	120.91
C-40	8.000	15.068	120.544	1	120.54
C-41	8.000	15.002	120.012	1	120.01
C-42	8.000	14.946	119.572	1	119.57
C-43	8.000	14.891	119.132	1	119.13
C-44	8.000	14.835	118.692	1	118.69
C-45	8.000	14.779	118.252	1	118.25
C-46	8.000	14.723	117.812	1	117.81
C-47	8.000	14.667	117.372	1	117.37
C-48	8.000	14.611	116.932	1	116.93
C-49	8.000	14.555	116.492	1	116.49
C-50	8.000	14.500	116.052	1	116.05
C-51	8.000	14.444	115.612	1	115.61
C-52	8.000	14.388	115.172	1	115.17
C-53	8.000	14.332	114.732	1	114.73
C-54	8.000	14.276	114.292	1	114.29
D-1	8.000	17.395	139.160	1	139.16
D-2	8.000	16.966	135.728	1	135.73
D-3	8.000	16.536	132.296	1	132.30
D-4	8.000	16.106	128.864	1	128.86
D-5	8.000	15.676	12		