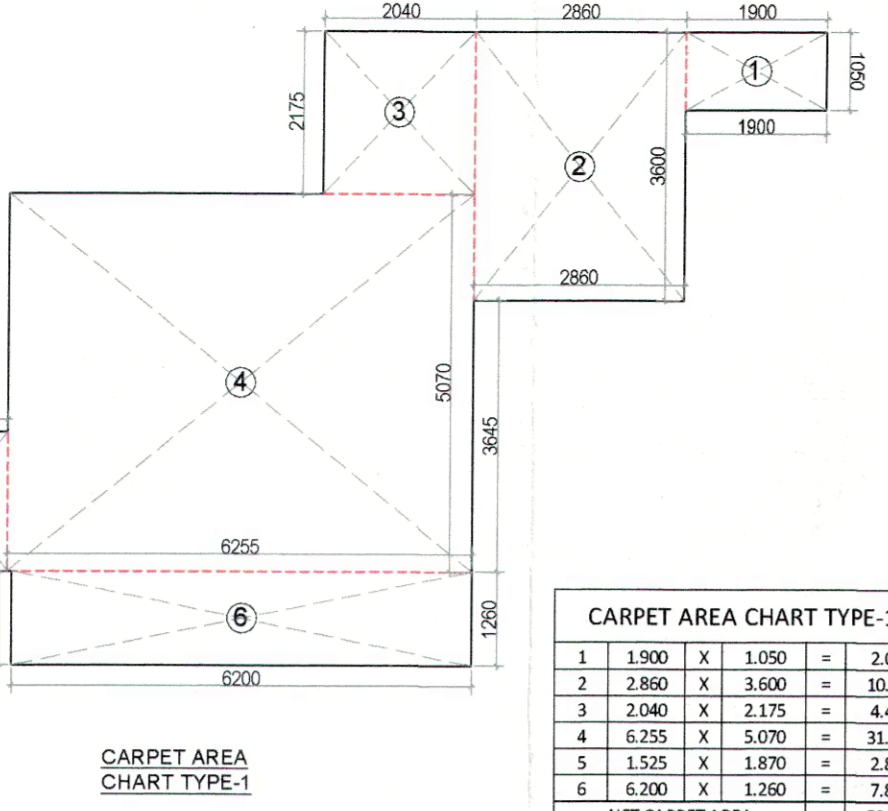
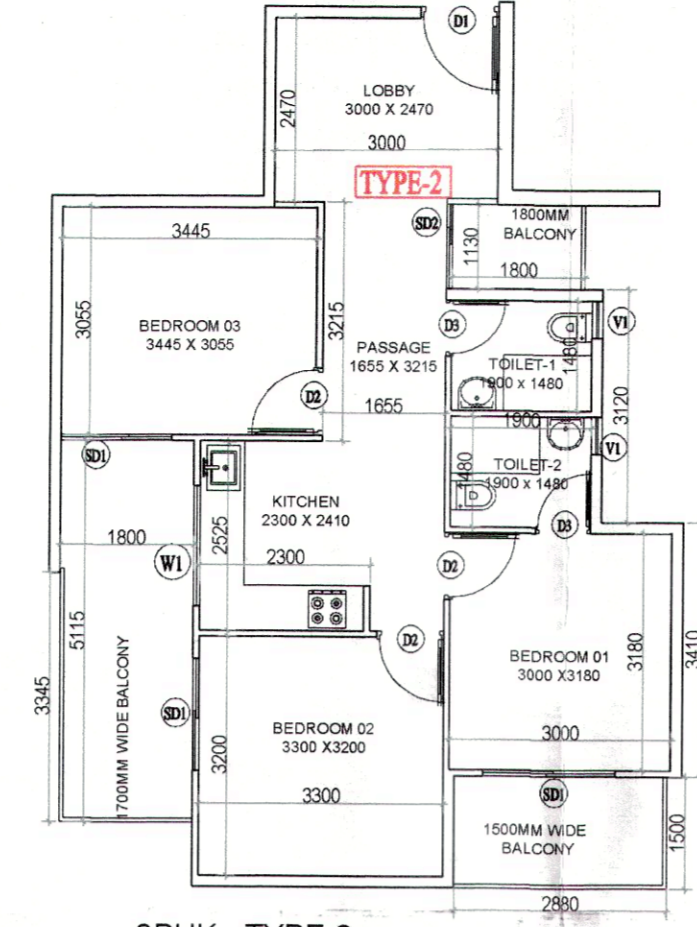


3BHK - TYPE-1
CARPET AREA = 59.10 SQMT
BALCONY AREA = 14.42 SQMT

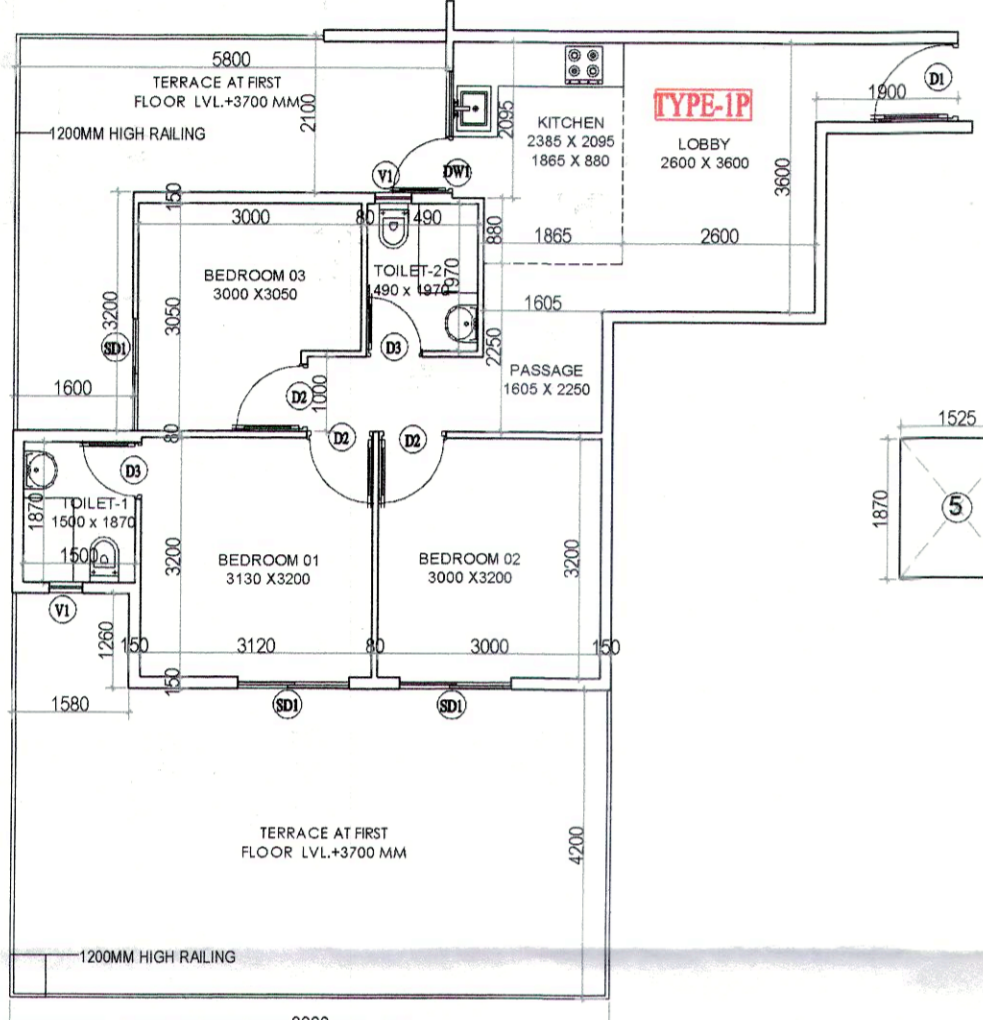
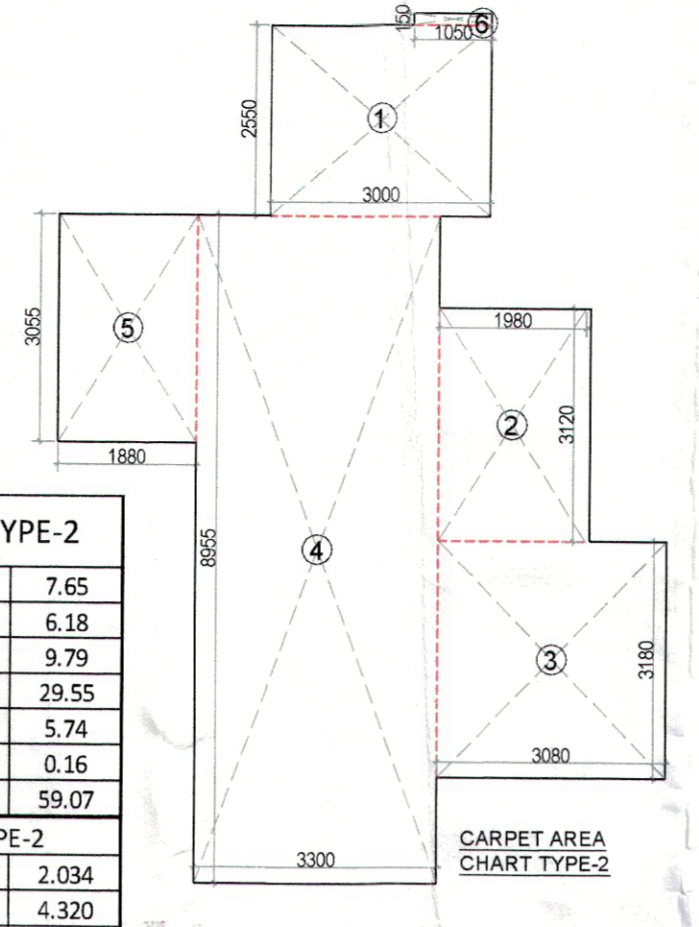


CARPET AREA CHART TYPE-1			
1	1.900	X	1.050 = 2.00
2	2.860	X	3.600 = 10.30
3	2.040	X	2.175 = 4.44
4	6.255	X	5.070 = 31.71
5	1.525	X	1.870 = 2.85
6	6.200	X	1.260 = 7.81
NET CARPET AREA = 59.10			
BALCONY AREA CHART TYPE-1			
1	1.450	X	1.250 = 1.81
2	1.250	X	1.260 = 1.575
3	1.250	X	1.800 = 2.250
4	1.250	X	2.025 = 2.531
NET BALCONY AREA = 14.42			

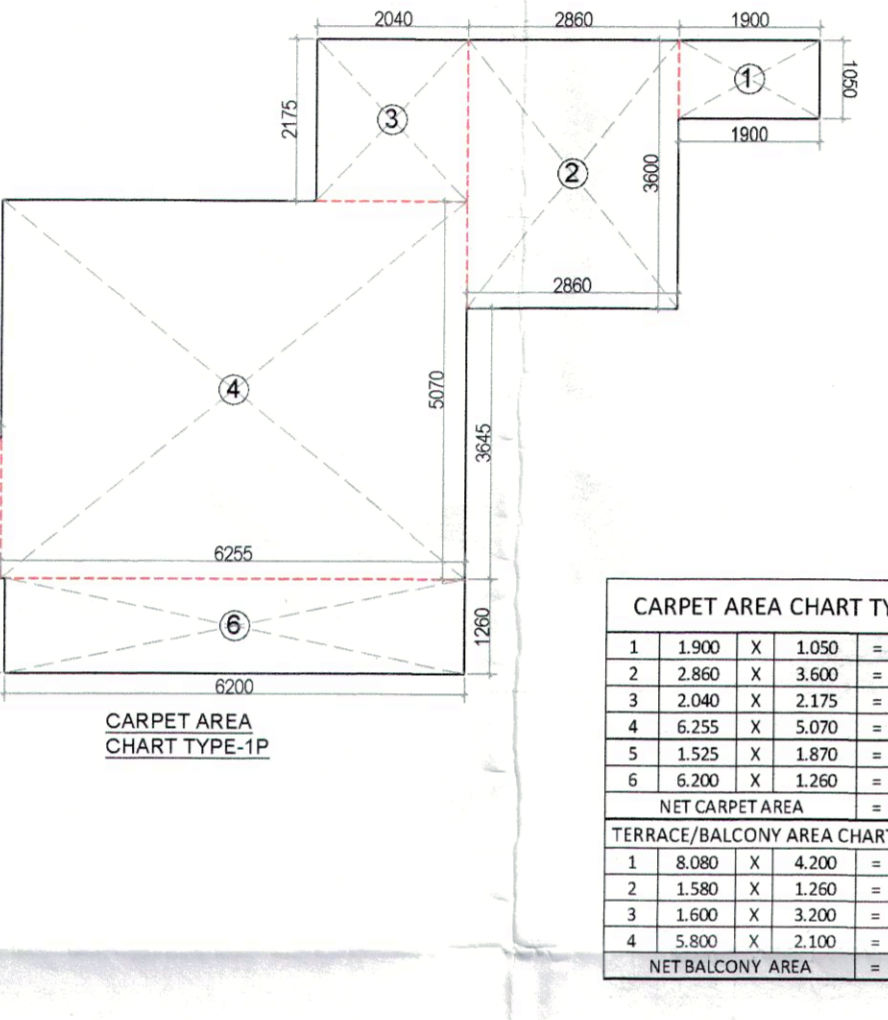


3BHK - TYPE-2
CARPET AREA = 59.07 SQMT
BALCONY AREA = 15.56 SQMT

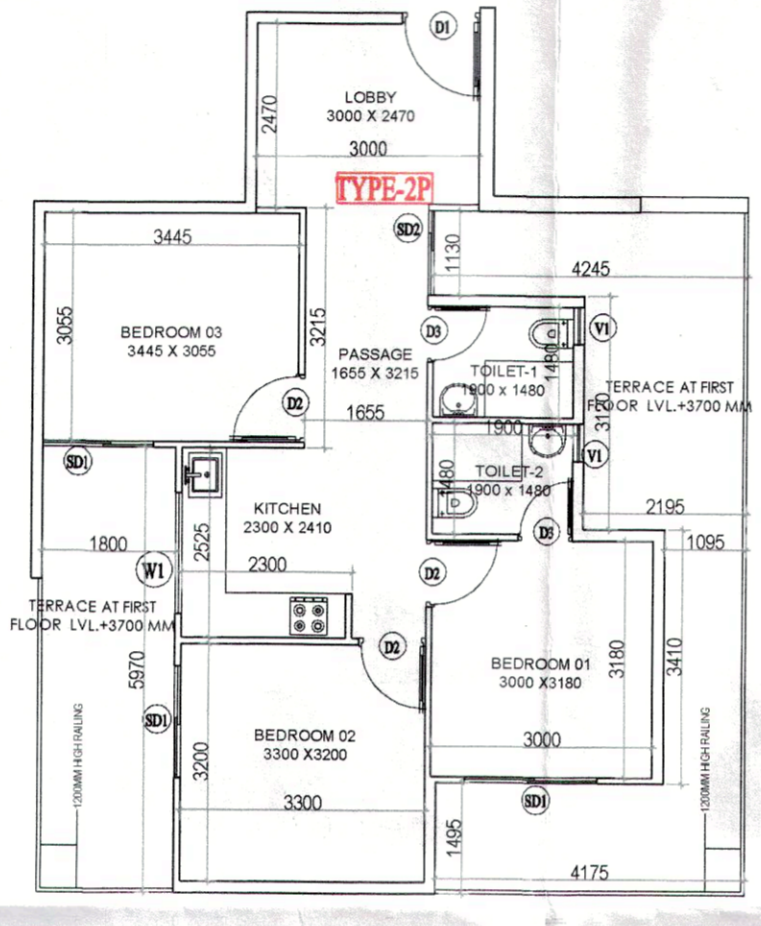
CARPET AREA CHART TYPE-2			
1	3.000	X	2.550 = 7.65
2	1.980	X	3.120 = 6.18
3	3.080	X	3.180 = 9.79
4	3.300	X	8.955 = 29.55
5	1.880	X	3.055 = 5.74
6	1.050	X	0.150 = 0.16
NET CARPET AREA = 59.07			
BALCONY AREA CHART TYPE-2			
1	1.800	X	1.130 = 2.034
2	2.880	X	1.500 = 4.320
3	1.800	X	5.115 = 9.207
NET BALCONY AREA = 15.56			



3BHK - TYPE-1P
CARPET AREA = 59.10 SQMT
TERRACE AREA = 53.23 SQMT

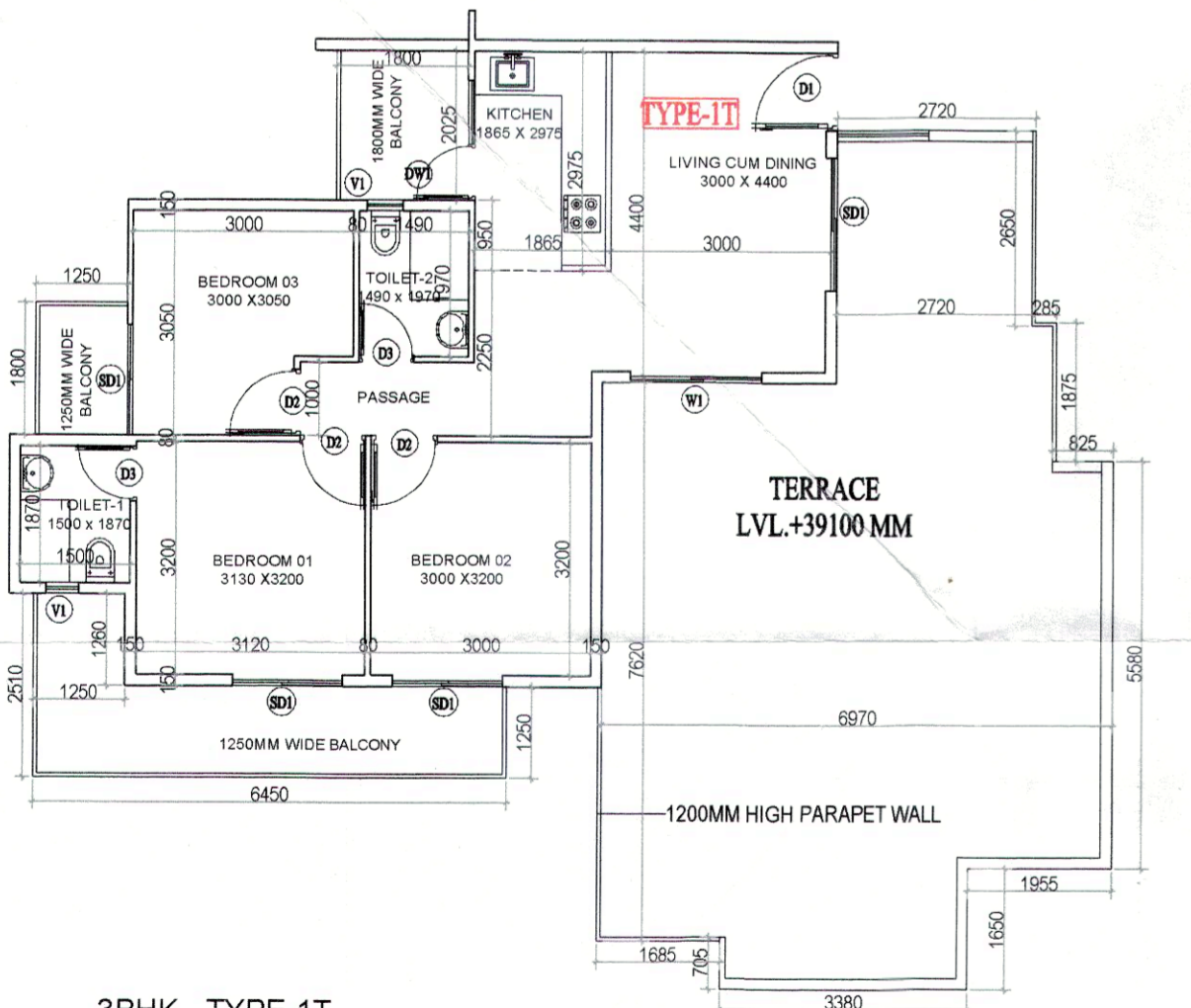
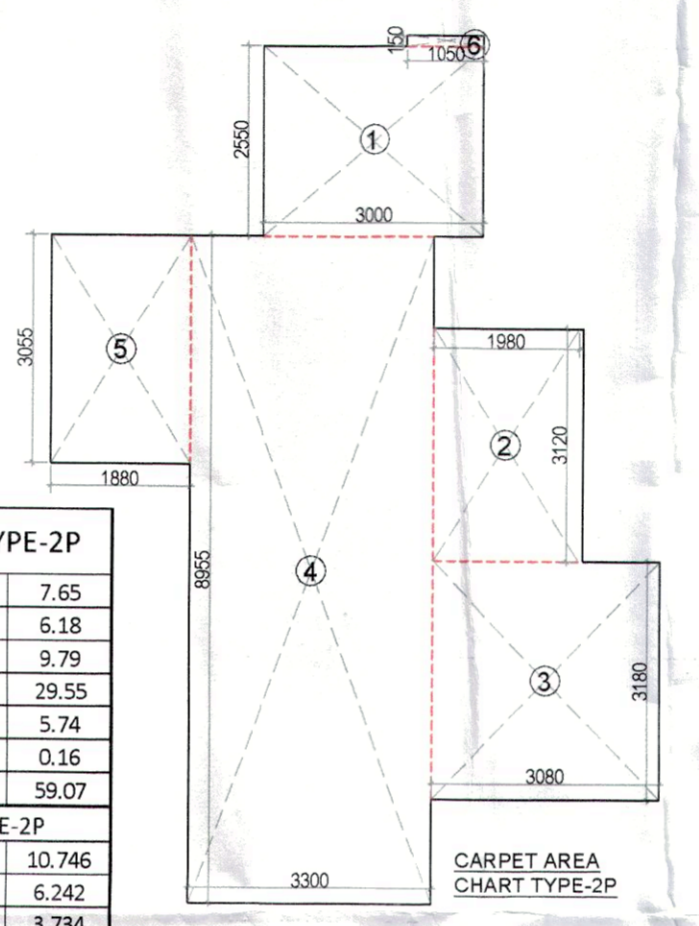


CARPET AREA CHART TYPE-1P			
1	1.900	X	1.050 = 2.00
2	2.860	X	3.600 = 10.30
3	2.040	X	2.175 = 4.44
4	6.255	X	5.070 = 31.71
5	1.525	X	1.870 = 2.85
6	6.200	X	1.260 = 7.81
NET CARPET AREA = 59.10			
TERRACE/BALCONY AREA CHART TYPE-1P			
1	8.080	X	4.200 = 33.936
2	1.580	X	1.260 = 1.991
3	1.600	X	3.320 = 5.120
4	5.800	X	2.100 = 12.180
NET BALCONY AREA = 53.23			

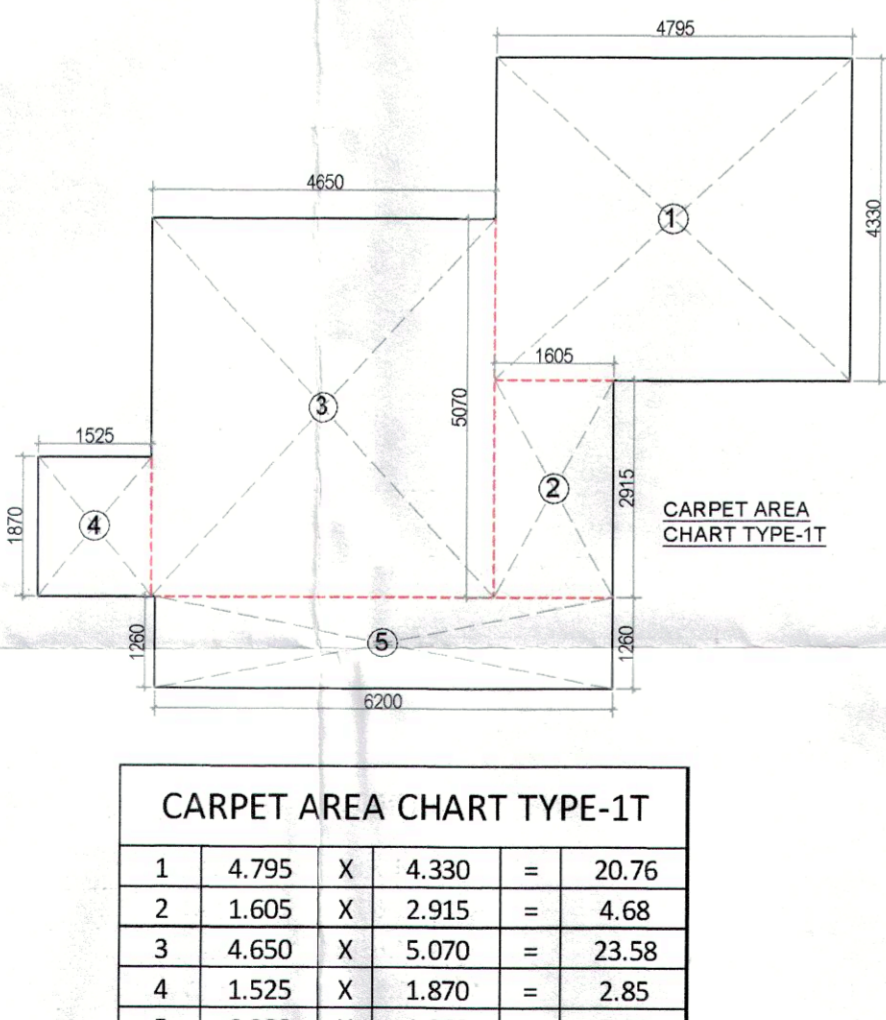


3BHK - TYPE-2P
CARPET AREA = 59.07 SQMT
TERRACE AREA = 32.37 SQMT

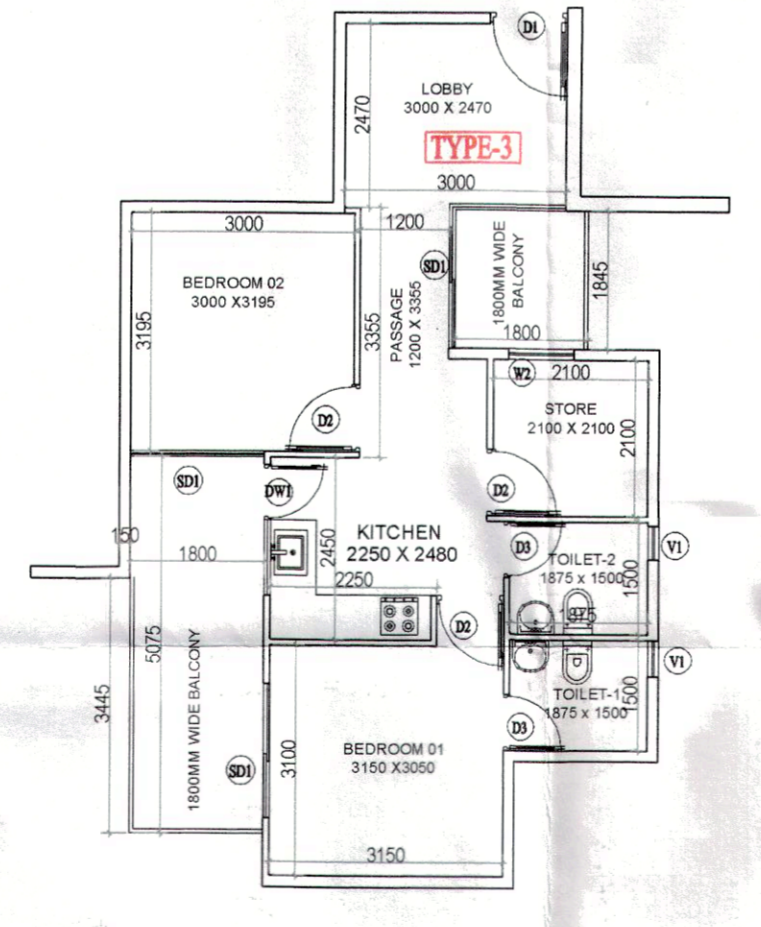
CARPET AREA CHART TYPE-2P			
1	3.000	X	2.550 = 7.65
2	1.980	X	3.120 = 6.18
3	3.080	X	3.180 = 9.79
4	3.300	X	8.955 = 29.55
5	1.880	X	3.055 = 5.74
6	1.050	X	0.150 = 0.16
NET CARPET AREA = 59.07			
TERRACE AREA CHART TYPE-2P			
1	1.800	X	5.970 = 10.746
2	4.175	X	1.495 = 6.242
3	1.095	X	3.410 = 3.734
4	2.195	X	3.120 = 6.848
5	4.245	X	1.130 = 4.797
TERRACE AREA = 32.37			



3BHK - TYPE-1T
CARPET AREA = 59.68 SQMT
BALCONY AREA = 15.53 SQMT
TERRACE AREA = 62.70 SQMT

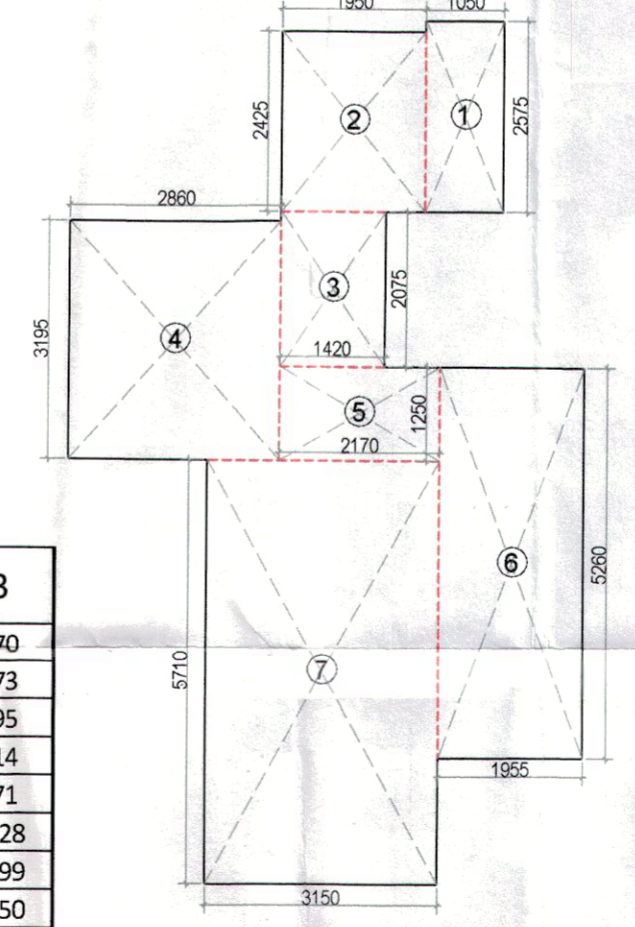


CARPET AREA CHART TYPE-1T			
1	4.795	X	4.330 = 20.76
2	1.605	X	2.915 = 4.68
3	4.650	X	5.070 = 23.58
4	1.525	X	1.870 = 2.85
5	6.200	X	1.260 = 7.81
NET CARPET AREA = 59.68			
BALCONY AREA CHART TYPE-1T			
1	1.800	X	2.025 = 3.645
2	1.250	X	1.800 = 2.250
3	1.250	X	1.260 = 1.575
4	6.450	X	1.250 = 8.063
NET BALCONY AREA = 15.53			
TERRACE AREA CHART TYPE-1T			
1	2.720	X	2.650 = 7.208
2	6.970	X	7.620 = 53.111
3	3.380	X	0.705 = 2.383
NET BALCONY AREA = 62.70			



2BHK+STORE - TYPE-3
CARPET AREA = 50.50 SQMT
BALCONY AREA = 12.46 SQMT

CARPET AREA CHART TYPE-3			
1	1.050	X	2.575 = 2.70
2	1.950	X	2.425 = 4.73
3	1.420	X	2.075 = 2.95
4	2.860	X	3.195 = 9.14
5	2.170	X	1.250 = 2.71
6	1.955	X	5.260 = 10.28
7	3.150	X	5.710 = 17.99
NET CARPET AREA = 50.50			
BALCONY AREA CHART TYPE-3			
1	1.800	X	5.075 = 9.135
2	1.800	X	1.845 = 3.321
BALCONY AREA = 12.46			



UNIT SUMMARY							
S.NO	TOWER NO.	UNIT TYPE	NO OF UNITS	CARPET AREA	BALCONY AREA	TERRACE AREA	TOTAL CARPET AREA
1	TOWER-1	TYPE-1(3BHK)	48	59.10	14.42		2836.80
		TYPE-2(3BHK)	24	59.07	15.56		1417.68
		TYPE-3((2BHK+STORE)	24	50.50	12.46		1212.00
		TYPE-1T(3BHK)	4	59.68	15.53	62.70	238.72
2	TOWER-2	TYPE-1(3BHK)	48	59.10	14.42		2836.80
		TYPE-3((2BHK+STORE)	48	50.50	12.46		2424.00
		TYPE-1T(3BHK)	4	59.68	15.53	62.70	238.72
3	TOWER-3	TYPE-1(3BHK)	46	59.10	14.42		2718.60
		TYPE-2(3BHK)	22	59.07	15.56		1299.54
		TYPE-3((2BHK+STORE)	24	50.50	12.46		1212.00
		TYPE-1P(3BHK)	2	59.10		53.23	118.20
		TYPE-2P(3BHK)	2	59.07		32.37	118.14
4	TOWER-4	TYPE-1(3BHK)	46	59.10	14.42		2718.60
		TYPE-2(3BHK)	22	59.07	15.56		1299.54
		TYPE-3((2BHK+STORE)	24	50.50	12.46		1212.00
		TYPE-1P(3BHK)	2	59.10		53.23	118.20
5	TOWER-5	TYPE-1(3BHK)	48	59.10	14.42		2836.80
		TYPE-3((2BHK+STORE)	48	50.50	12.46		2424.00
		TYPE-1T(3BHK)	4	59.68	15.53	62.70	238.72
		TYPE-1(3BHK)	46	59.10	14.42		2718.60
		TYPE-2(3BHK)	22	59.07	15.56		1299.54
6	TOWER-6	TYPE-1(3BHK)	48	59.10	14.42		2836.80
		TYPE-3((2BHK+STORE)	48	50.50	12.46		2424.00
		TYPE-1T(3BHK)	3	59.68	15.53	62.70	179.04
		TOTAL	599				

Sanctioned
MEMO NO: 645
DATED: 06/01/2022

Sanctioned
MEMO NO: 645
DATED: 06/01/2022

Sl. No.	TYPE	WIDTH	HEIGHT	SIZE	CILL	LINTEL
1	D1	1050	2150	1050X2150		2150
2	D2	900	2150	900X2150		2150
3	D3	750	2150	750X2150		2150
4	W1	1500	1400	1200X1400	750	2150
5	W2	1200	1400	1200X1400	750	2150
6	DW1	1650	2150	1650X2150	750	2150
7	SD1	1500	2150	1500 X 2150		2150
8	SD2	1250	2150	1250 X 2150		2150
9	VI	450	900	450 X 900	1250	2150

NOTE: DI WITH 1 HR FIRE RATING

CLIENT:-

PROJECT :-
PROPOSED BUILDING PLAN OF AFFORDABLE GROUP HOUSING COLONY OVER AN AREA MEASURING 4.15 ACRE(LICENCE NO.159 OF 2022 DATED 03/10/2022) IN SECTOR-79B, GURUGRAM MANESAR URBAN COMPLEX BEING DEVELOPED BY SH BHEEM SINGH & INDER SINGH S/O SULTAN SINGH, FORSYTHIA PROPBUILD IN COLLABORATION WITH SILVER X PROJECTS INDIA PVT LTD.

ARCHITECTS: **VIMAL BAJAJ**
Pinnacle Architects Pvt Ltd
938, Sector-14, Gurgaon
HARYANA

SCALE: 1:100
DRAWING NAME: UNITS DETAILS
UNITS PLAN & AREA DIAGRAM.
DRAWING NO.- 15

APPLICANT'S SIGN: **VIMAL BAJAJ**
Architect CA/96/19791
938, Sector-14, Gurgaon

ARCHITECT'S SIGN

For Silver-X Projects India Pvt. Ltd.