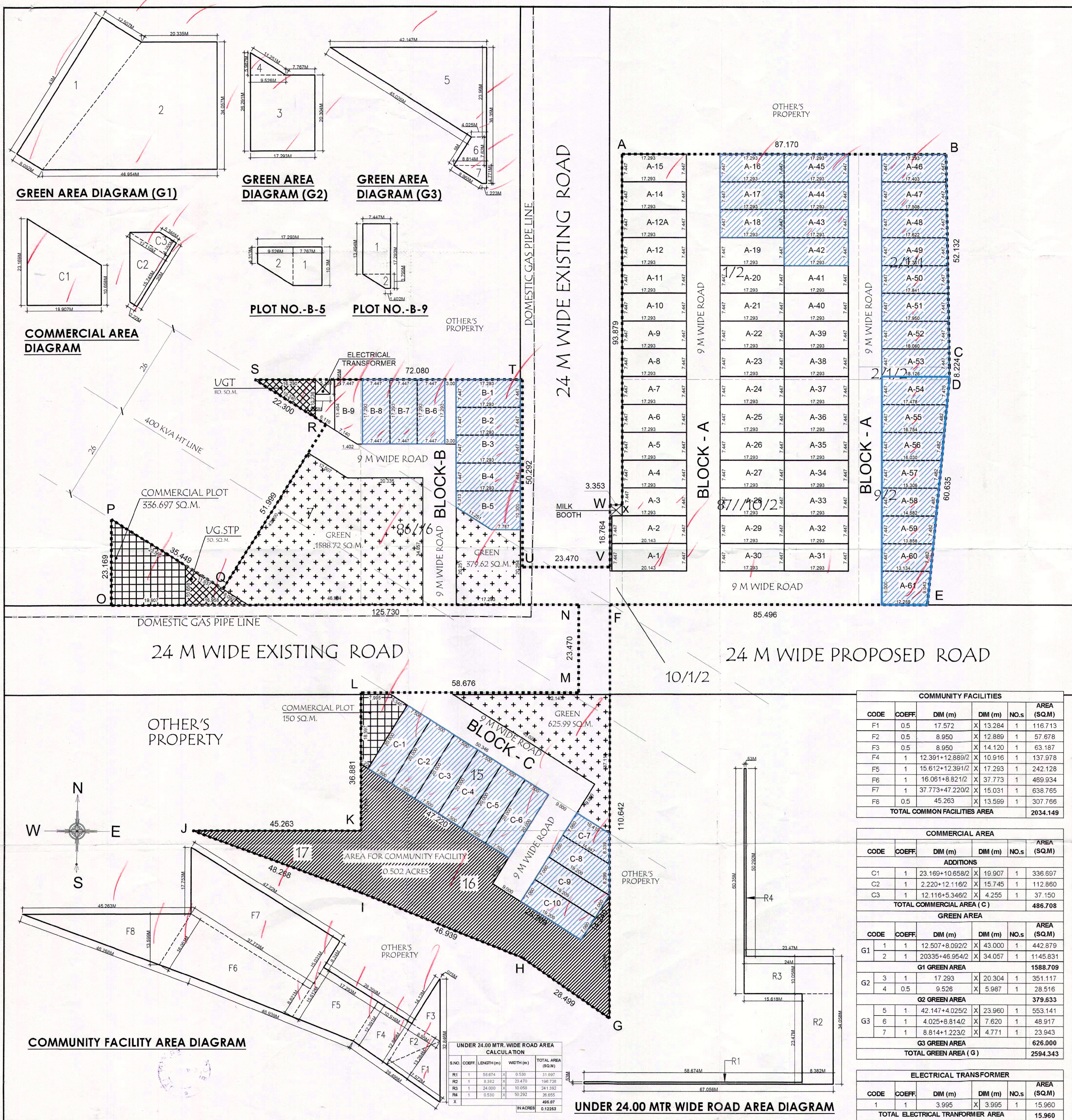


DTP [Signature]  
 ATP [Signature]  
 JD [Signature]  
 JE [Signature]



### SITE AREA STATEMENT

DESCRIPTION	AREA IN SQMT.	%	AREA IN ACRE
<b>TOTAL AREA OR LAND (A)</b>	<b>20310.128</b>	<b>100</b>	<b>5.01875</b>
<b>NET PLANNING AREA (G)</b>	<b>20310.128</b>		<b>5.01875</b>
PERMISSIBLE PLOTTING AREA @61% ON NET PLANNING = (G)	12389.178	61.00%	3.06144
PROPOSED PLOTTING AREA	10373.474	51.08%	2.56334
REQUIRED AREA FOR COMMUNITY FACILITIES @ 10% OF TOTAL SITE AREA = (A)	2031.013	10.00%	0.50187
PROVIDED AREA FOR COMMUNITY FACILITIES	2034.149	10.02%	0.50265
REQUIRED GREEN AREA @7.5% OF TOATAL SITE AREA = (A)	1523.260	7.50%	0.37641
PROVIDED GREEN AREA	2594.343	12.77%	0.64108
PERMISSIBLE COMMERCIAL AREA @ 4% ON NET PLANNING = (G)	812.405	4.00%	0.20075
PROPOSED COMMERCIAL AREA	486.708	2.40%	0.12027
PERMISSIBLE DENSITY	240-400	PPA	
PROPOSED DENSITY = (80 X 18) = 1440/5.01875	286.900	PPA	

### AREA FREEZE SHOWN THUS (50%) (AREA FREEZE SHOWN THUS 50%) FOR TOTAL SALEABLE PLOTS AREA

S.NO.	PLOT NO.	COEFF.	LENGTH (m)	WIDTH (m)	PLOT AREA (SQ.M)	NO.s	TOTAL AREA (SQ.M)	
<b>BLOCK - A</b>								
1	A-16 TO A-18, A-42 TO A-45	1	17.293	7.447	128.781	7	901.467	
2	A-46	1	17.403+17.293/2	7.447	129.191	1	129.191	
3	A-47	1	17.508+17.403/2	7.447	129.991	1	129.991	
4	A-48	1	17.622+17.508/2	7.447	130.807	1	130.807	
5	A-49	1	17.731+17.622/2	7.447	131.637	1	131.637	
6	A-50	1	17.841+17.731/2	7.447	132.452	1	132.452	
7	A-51	1	17.950+17.841/2	7.447	133.268	1	133.268	
8	A-52	1	18.060+17.950/2	7.447	134.083	1	134.083	
9	A-53	1	18.126+18.060/2	7.447	134.739	1	134.739	
10	A-54	1	17.478+18.126/2	7.447	132.571	1	132.571	
11	A-55	1	16.754+17.478/2	7.447	127.463	1	127.463	
12	A-56	1	16.030+16.754/2	7.447	122.071	1	122.071	
13	A-57	1	15.306+16.030/2	7.447	116.680	1	116.680	
14	A-58	1	14.582+15.306/2	7.447	111.288	1	111.288	
15	A-59	1	13.858+14.582/2	7.447	105.896	1	105.896	
16	A-60	1	13.134+13.858/2	7.447	100.505	1	100.505	
17	A-61	1	13.134+12.259/2	9.000	114.269	1	114.269	
<b>BLOCK - B</b>								
18	B-1 TO B-4, B6 TO B8	1	17.293	7.447	128.781	7	901.467	
19	B-5	2	7.767	10.300	80.000	1	80.000	
			4.313+10.300/2	9.526	69.602		69.602	
<b>BLOCK - C</b>								
20	C1 TO C-6	1	20.000	7.500	150.000	6	900.000	
21	C-7	1	10.410+14.847/2	7.060	89.157	1	89.157	
22	C-8	1	14.847+19.209/2	7.060	120.218	1	120.218	
23	C-9, C-10	1	19.209	7.060	135.816	2	271.231	
X	<b>TOTAL PLOTS AREA</b>						<b>41</b>	<b>5320.051</b>
							<b>IN ACRES</b>	<b>1.31461</b>

### PLOTS AREA CALCUATIONS

S.NO.	PLOT NO.	COEFF.	LENGTH (m)	WIDTH (m)	PLOT AREA (SQ.M)	NO.s	TOTAL AREA (SQ.M)	
1	A1, A2	1	20.143	7.447	150.005	2	300.010	
2	A3- TO A-45	1	17.293	7.447	128.781	43	5537.582	
3	A-46	1	17.403+17.293/2	7.447	129.191	1	129.191	
4	A-47	1	17.508+17.403/2	7.447	129.991	1	129.991	
5	A-48	1	17.622+17.508/2	7.447	130.807	1	130.807	
6	A-49	1	17.731+17.622/2	7.447	131.637	1	131.637	
7	A-50	1	17.841+17.731/2	7.447	132.452	1	132.452	
8	A-51	1	17.950+17.841/2	7.447	133.268	1	133.268	
9	A-52	1	18.060+17.950/2	7.447	134.083	1	134.083	
10	A-53	1	18.126+18.060/2	7.447	134.739	1	134.739	
11	A-54	1	17.478+18.126/2	7.447	132.571	1	132.571	
12	A-55	1	16.754+17.478/2	7.447	127.463	1	127.463	
13	A-56	1	16.030+16.754/2	7.447	122.071	1	122.071	
14	A-57	1	15.306+16.030/2	7.447	116.680	1	116.680	
15	A-58	1	14.582+15.306/2	7.447	111.288	1	111.288	
16	A-59	1	13.858+14.582/2	7.447	105.896	1	105.896	
17	A-60	1	13.134+13.858/2	7.447	100.505	1	100.505	
18	A-61	1	13.134+12.259/2	9.000	114.269	1	114.269	
19	B-1 TO B-4, B6 TO B8	1	17.293	7.447	128.781	7	901.467	
20	B-5	2	7.767	10.300	80.000	1	80.000	
			4.313+10.300/2	9.526	69.602		69.602	
21	C1 TO C-6	1	20.000	7.500	150.000	6	900.000	
22	C-7	1	10.410+14.847/2	7.060	89.157	1	89.157	
23	C-8	1	14.847+19.209/2	7.060	120.218	1	120.218	
24	C-9, C-10	1	19.209	7.060	135.816	2	271.231	
X	<b>TOTAL PLOTS AREA</b>						<b>80</b>	<b>10373.474</b>
							<b>IN ACRES</b>	<b>2.56334</b>

### COMMUNITY FACILITIES

CODE	COEFF.	DIM (m)	DIM (m)	NO.s	AREA (SQ.M)
F1	0.5	17.572	13.284	1	116.713
F2	0.5	8.950	12.889	1	57.678
F3	0.5	8.950	14.120	1	63.187
F4	1	12.391+12.889/2	10.916	1	137.978
F5	1	15.612+12.391/2	17.293	1	242.128
F6	1	16.061+8.821/2	37.773	1	489.934
F7	1	37.773+47.220/2	15.031	1	638.765
F8	0.5	45.263	13.569	1	307.766
<b>TOTAL COMMON FACILITIES AREA</b>					<b>2034.149</b>

### COMMERCIAL AREA

CODE	COEFF.	DIM (m)	DIM (m)	NO.s	AREA (SQ.M)
C1	1	23.169+10.658/2	19.907	1	336.697
C2	1	2.220+12.116/2	15.745	1	112.860
C3	1	12.116+5.346/2	4.255	1	37.150
<b>TOTAL COMMERCIAL AREA (C)</b>					<b>486.708</b>

### GREEN AREA

CODE	COEFF.	DIM (m)	DIM (m)	NO.s	AREA (SQ.M)
G1	1	12.507+8.092/2	43.000	1	442.879
2	1	20335+46.954/2	34.057	1	1145.831
<b>G1 GREEN AREA</b>					<b>1588.709</b>
G2	3	17.293	20.304	1	351.117
4	0.5	9.526	5.987	1	28.516
<b>G2 GREEN AREA</b>					<b>379.633</b>
G3	5	42.147+4.025/2	23.960	1	553.141
6	1	4.025+8.814/2	7.620	1	48.917
7	1	8.814+1.223/2	4.771	1	23.943
<b>G3 GREEN AREA</b>					<b>626.000</b>
<b>TOTAL GREEN AREA (G)</b>					<b>2594.343</b>

### ELECTRICAL TRANSFORMER

CODE	COEFF.	DIM (m)	DIM (m)	NO.s	AREA (SQ.M)
1	1	3.995	3.995	1	15.960
<b>TOTAL ELECTRICAL TRANSFORMER AREA</b>					<b>15.960</b>

### LEGEND

	AREA TO BE HANDLED OVER TO GOVT. FOR COMMON FACILITIES
	GREEN AREA
	COMMERCIAL AREA
	SITE FOR PUBLIC UTILITY
	SITE BOUNDARY LINE

**TITLE:-**  
 DEMARCATION PLAN OF RESIDENTIAL PLOTTED COLONY UNDER DDJAY ON A TOTAL LAND AREA MEASURING 5.01875 ACRES AT SECTOR- 70, REVENUE ESTATE OF VILLAGE BADSHAHPUR, DISTT.-GURUGRAM, HARYANA FOR M/S BNB COLONIZER PVT. LTD.

**TITLE :- DEMARCATION PLAN**  
**SCALE:-** 1:500

OWNER/AUTH. SIGN. \_\_\_\_\_ ARCHITECT'S SIGN. \_\_\_\_\_