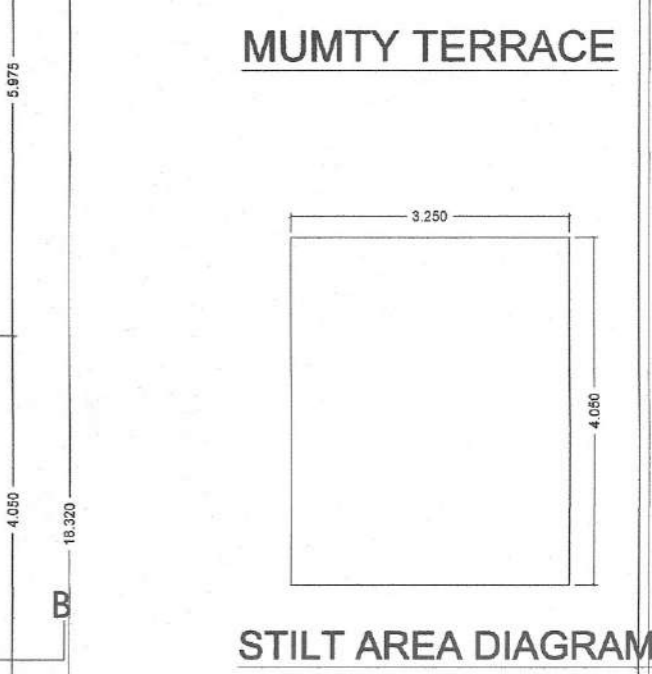
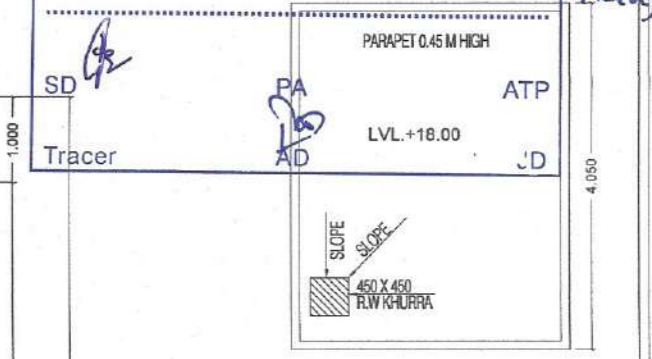
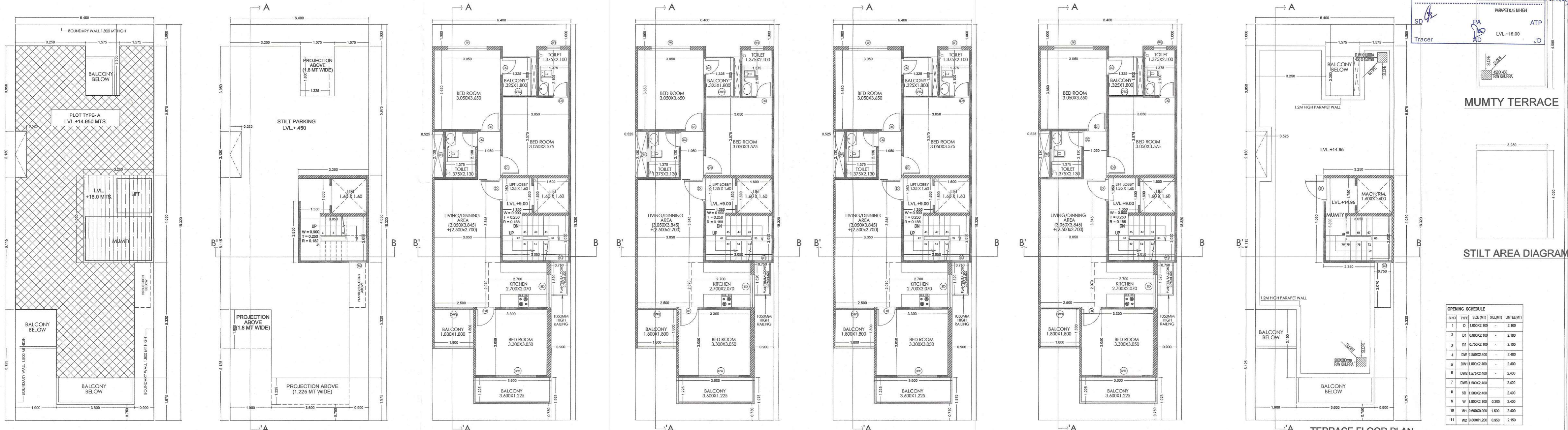


FOUND AS PER SELF CERTIFICATION POLICY
 Plot No. 7426-A, 7426-B, 7426-C, 7426-D, 7426-E, 7426-F, 7426-G, 7426-H, 7426-I, 7426-J, 7426-K, 7426-L, 7426-M, 7426-N, 7426-O, 7426-P, 7426-Q, 7426-R, 7426-S, 7426-T, 7426-U, 7426-V, 7426-W, 7426-X, 7426-Y, 7426-Z, 7426-AA, 7426-AB, 7426-AC, 7426-AD, 7426-AE, 7426-AF, 7426-AG, 7426-AH, 7426-AI, 7426-AJ, 7426-AM, 7426-AN, 7426-AO, 7426-AP, 7426-AQ, 7426-AR, 7426-AS, 7426-AT, 7426-AU, 7426-AV, 7426-AW, 7426-AX, 7426-AY, 7426-AZ, 7426-BA, 7426-BB, 7426-BC, 7426-BD, 7426-BE, 7426-BF, 7426-BG, 7426-BH, 7426-BI, 7426-BJ, 7426-BM, 7426-BN, 7426-BO, 7426-BP, 7426-BQ, 7426-BR, 7426-BS, 7426-BT, 7426-BU, 7426-BV, 7426-BW, 7426-BX, 7426-BY, 7426-BZ, 7426-CA, 7426-CB, 7426-CC, 7426-CD, 7426-CE, 7426-CF, 7426-CG, 7426-CH, 7426-CI, 7426-CJ, 7426-CM, 7426-CN, 7426-CO, 7426-CP, 7426-CQ, 7426-CR, 7426-CS, 7426-CT, 7426-CU, 7426-CV, 7426-CW, 7426-CX, 7426-CY, 7426-CZ, 7426-DA, 7426-DB, 7426-DC, 7426-DD, 7426-DE, 7426-DF, 7426-DG, 7426-DH, 7426-DI, 7426-DJ, 7426-DM, 7426-DN, 7426-DO, 7426-DP, 7426-DQ, 7426-DR, 7426-DS, 7426-DT, 7426-DU, 7426-DV, 7426-DW, 7426-DX, 7426-DY, 7426-DZ, 7426-EA, 7426-EB, 7426-EC, 7426-ED, 7426-EE, 7426-EF, 7426-EG, 7426-EH, 7426-EI, 7426-EJ, 7426-EM, 7426-EN, 7426-EO, 7426-EP, 7426-EQ, 7426-ER, 7426-ES, 7426-ET, 7426-EU, 7426-EV, 7426-EW, 7426-EX, 7426-EY, 7426-EZ, 7426-FA, 7426-FB, 7426-FC, 7426-FD, 7426-FE, 7426-FG, 7426-FH, 7426-FI, 7426-FJ, 7426-FM, 7426-FN, 7426-FO, 7426-FP, 7426-FQ, 7426-FR, 7426-FS, 7426-FT, 7426-FU, 7426-FV, 7426-FW, 7426-FX, 7426-FY, 7426-FZ, 7426-GA, 7426-GB, 7426-GC, 7426-GD, 7426-GE, 7426-GF, 7426-GG, 7426-GH, 7426-GI, 7426-GJ, 7426-GM, 7426-GN, 7426-GO, 7426-GP, 7426-GQ, 7426-GR, 7426-GS, 7426-GT, 7426-GU, 7426-GV, 7426-GW, 7426-GX, 7426-GY, 7426-GZ, 7426-HA, 7426-HB, 7426-HC, 7426-HD, 7426-HE, 7426-HF, 7426-HG, 7426-HH, 7426-HI, 7426-HJ, 7426-HM, 7426-HN, 7426-HO, 7426-HP, 7426-HQ, 7426-HR, 7426-HS, 7426-HT, 7426-HU, 7426-HV, 7426-HW, 7426-HX, 7426-HY, 7426-HZ, 7426-IA, 7426-IB, 7426-IC, 7426-ID, 7426-IE, 7426-IF, 7426-IG, 7426-IH, 7426-II, 7426-IJ, 7426-IM, 7426-IN, 7426-IO, 7426-IP, 7426-IQ, 7426-IR, 7426-IS, 7426-IT, 7426-IU, 7426-IV, 7426-IW, 7426-IX, 7426-IY, 7426-IZ, 7426-JA, 7426-JB, 7426-JC, 7426-JD, 7426-JE, 7426-JF, 7426-JG, 7426-JH, 7426-JI, 7426-JJ, 7426-JM, 7426-JN, 7426-JO, 7426-JP, 7426-JQ, 7426-JR, 7426-JS, 7426-JT, 7426-JU, 7426-JV, 7426-JW, 7426-JX, 7426-JY, 7426-JZ, 7426-KA, 7426-KB, 7426-KC, 7426-KD, 7426-KE, 7426-KF, 7426-KG, 7426-KH, 7426-KI, 7426-KJ, 7426-KM, 7426-KN, 7426-KO, 7426-KP, 7426-KQ, 7426-KR, 7426-KS, 7426-KT, 7426-KU, 7426-KV, 7426-KW, 7426-KX, 7426-KY, 7426-KZ, 7426-LA, 7426-LB, 7426-LC, 7426-LD, 7426-LE, 7426-LF, 7426-LG, 7426-LH, 7426-LI, 7426-LJ, 7426-LM, 7426-LN, 7426-LO, 7426-LP, 7426-LQ, 7426-LR, 7426-LS, 7426-LT, 7426-LU, 7426-LV, 7426-LW, 7426-LX, 7426-LY, 7426-LZ, 7426-MA, 7426-MB, 7426-MC, 7426-MD, 7426-ME, 7426-MF, 7426-MG, 7426-MH, 7426-MI, 7426-MJ, 7426-MM, 7426-MN, 7426-MO, 7426-MP, 7426-MQ, 7426-MR, 7426-MS, 7426-MT, 7426-MU, 7426-MV, 7426-MW, 7426-MX, 7426-MY, 7426-MZ, 7426-NA, 7426-NB, 7426-NC, 7426-ND, 7426-NE, 7426-NF, 7426-NG, 7426-NH, 7426-NI, 7426-NJ, 7426-NM, 7426-NN, 7426-NO, 7426-NP, 7426-NQ, 7426-NR, 7426-NS, 7426-NT, 7426-NU, 7426-NV, 7426-NW, 7426-NX, 7426-NY, 7426-NZ, 7426-OA, 7426-OB, 7426-OC, 7426-OD, 7426-OE, 7426-OF, 7426-OG, 7426-OH, 7426-OI, 7426-OJ, 7426-OM, 7426-ON, 7426-OO, 7426-OP, 7426-OQ, 7426-OR, 7426-OS, 7426-OT, 7426-OU, 7426-OV, 7426-OW, 7426-OX, 7426-OY, 7426-OZ, 7426-PA, 7426-PB, 7426-PC, 7426-PD, 7426-PE, 7426-PF, 7426-PG, 7426-PH, 7426-PI, 7426-PJ, 7426-PM, 7426-PN, 7426-PO, 7426-PP, 7426-PQ, 7426-PR, 7426-PS, 7426-PT, 7426-PU, 7426-PV, 7426-PW, 7426-PX, 7426-PY, 7426-PZ, 7426-QA, 7426-QB, 7426-QC, 7426-QD, 7426-QE, 7426-QF, 7426-QG, 7426-QH, 7426-QI, 7426-QJ, 7426-QM, 7426-QN, 7426-QO, 7426-QP, 7426-QL, 7426-QR, 7426-QS, 7426-QT, 7426-QU, 7426-QV, 7426-QW, 7426-QX, 7426-QY, 7426-QZ, 7426-RA, 7426-RB, 7426-RC, 7426-RD, 7426-RE, 7426-RF, 7426-RG, 7426-RH, 7426-RI, 7426-RJ, 7426-RM, 7426-RN, 7426-RO, 7426-RP, 7426-RQ, 7426-RR, 7426-RS, 7426-RT, 7426-RU, 7426-RV, 7426-RW, 7426-RX, 7426-RY, 7426-RZ, 7426-SA, 7426-SB, 7426-SC, 7426-SD, 7426-SE, 7426-SF, 7426-SG, 7426-SH, 7426-SI, 7426-SJ, 7426-SM, 7426-SN, 7426-SO, 7426-SP, 7426-SQ, 7426-SR, 7426-SS, 7426-ST, 7426-SU, 7426-SV, 7426-SW, 7426-SX, 7426-SY, 7426-SZ, 7426-TA, 7426-TB, 7426-TC, 7426-TD, 7426-TE, 7426-TF, 7426-TG, 7426-TH, 7426-TI, 7426-TJ, 7426-TM, 7426-TN, 7426-TO, 7426-TP, 7426-TQ, 7426-TR, 7426-TS, 7426-TT, 7426-TU, 7426-TV, 7426-TW, 7426-TX, 7426-TY, 7426-TZ, 7426-UA, 7426-UB, 7426-UC, 7426-UD, 7426-UE, 7426-UF, 7426-UG, 7426-UH, 7426-UI, 7426-UJ, 7426-UM, 7426-UN, 7426-UO, 7426-UP, 7426-UQ, 7426-UR, 7426-US, 7426-UT, 7426-UY, 7426-UZ, 7426-VA, 7426-VB, 7426-VC, 7426-VD, 7426-VE, 7426-VF, 7426-VG, 7426-VH, 7426-VI, 7426-VJ, 7426-VM, 7426-VN, 7426-VO, 7426-VP, 7426-VQ, 7426-VR, 7426-VS, 7426-VT, 7426-VU, 7426-VV, 7426-VW, 7426-VX, 7426-VY, 7426-VZ, 7426-WA, 7426-WB, 7426-WC, 7426-WD, 7426-WE, 7426-WF, 7426-WG, 7426-WH, 7426-WI, 7426-WJ, 7426-WM, 7426-WN, 7426-WO, 7426-WP, 7426-WQ, 7426-WR, 7426-WS, 7426-WT, 7426-WU, 7426-WV, 7426-WW, 7426-WX, 7426-WY, 7426-WZ, 7426-XA, 7426-XB, 7426-XC, 7426-XD, 7426-XE, 7426-XF, 7426-XG, 7426-XH, 7426-XI, 7426-XJ, 7426-XM, 7426-XN, 7426-XO, 7426-XP, 7426-XQ, 7426-XR, 7426-XS, 7426-XT, 7426-XU, 7426-XV, 7426-XW, 7426-XX, 7426-XY, 7426-XZ, 7426-YA, 7426-YB, 7426-YC, 7426-YD, 7426-YE, 7426-YF, 7426-YG, 7426-YH, 7426-YI, 7426-YJ, 7426-YM, 7426-YN, 7426-YO, 7426-YP, 7426-YQ, 7426-YR, 7426-YS, 7426-YT, 7426-YU, 7426-YV, 7426-YW, 7426-YX, 7426-YY, 7426-YZ, 7426-ZA, 7426-ZB, 7426-ZC, 7426-ZD, 7426-ZE, 7426-ZF, 7426-ZG, 7426-ZH, 7426-ZI, 7426-ZJ, 7426-ZM, 7426-ZN, 7426-ZO, 7426-ZP, 7426-ZQ, 7426-ZR, 7426-ZS, 7426-ZT, 7426-ZU, 7426-ZV, 7426-ZW, 7426-ZX, 7426-ZY, 7426-ZZ



Level	Type	Size (sqm)	Balance	Utilized
1	D	1800x1500	-	2,700
2	D1	1800x1500	-	2,700
3	D2	1800x1500	-	2,700
4	D3	1800x1500	-	2,700
5	D4	1800x1500	-	2,700
6	D5	1800x1500	-	2,700
7	D6	1800x1500	-	2,700
8	D7	1800x1500	-	2,700
9	D8	1800x1500	-	2,700
10	D9	1800x1500	-	2,700
11	D10	1800x1500	-	2,700

SITE PLAN ROAD 9 MT WIDE LVL± 0.0 MT
 STILT FLOOR PLAN
 FIRST FLOOR PLAN
 SECOND FLOOR PLAN
 THIRD FLOOR PLAN
 FOURTH FLOOR PLAN
 TERRACE FLOOR PLAN

Item	L	X	B	X	FACTOR	X	NO	=	SQ.MT
1	3.250	x	4.050	x	1.0	x	1	=	13.103
TOTAL = 13.103									

Item	L	X	B	X	FACTOR	X	NO	=	SQ.MT
1	1.575	x	2.300	x	1.0	x	1	=	3.623
2	3.250	x	2.300	x	1.0	x	1	=	7.475
3	3.400	x	1.650	x	1.0	x	1	=	5.610
4	5.872	x	2.130	x	1.0	x	1	=	12.514
5	16.400	x	3.945	x	1.0	x	1	=	64.728
6	5.600	x	3.170	x	1.0	x	1	=	17.652
7	3.800	x	3.150	x	1.0	x	1	=	12.090
TOTAL = 122.692									

Item	L	X	B	X	FACTOR	X	NO	=	SQ.MT
1	1.800	x	1.000	x	1.0	x	1	=	1.800
2	3.000	x	2.050	x	1.0	x	1	=	6.150
TOTAL = 7.950									

Item	L	X	B	X	FACTOR	X	NO	=	SQ.MT
1	1.800	x	1.000	x	1.0	x	1	=	1.800
2	1.800	x	1.600	x	1.0	x	1	=	2.880
TOTAL = 4.680									

Item	L	X	B	X	FACTOR	X	NO	=	SQ.MT
1	1.800	x	1.000	x	1.0	x	1	=	1.800
2	1.800	x	1.600	x	1.0	x	1	=	2.880
TOTAL = 4.680									

Item	L	X	B	X	FACTOR	X	NO	=	SQ.MT
1	1.800	x	1.000	x	1.0	x	1	=	1.800
2	1.800	x	1.600	x	1.0	x	1	=	2.880
TOTAL = 4.680									

Item	L	X	B	X	FACTOR	X	NO	=	SQ.MT
1	1.800	x	1.000	x	1.0	x	1	=	1.800
2	1.800	x	1.600	x	1.0	x	1	=	2.880
TOTAL = 4.680									

Item	L	X	B	X	FACTOR	X	NO	=	SQ.MT
1	1.800	x	1.000	x	1.0	x	1	=	1.800
2	1.800	x	1.600	x	1.0	x	1	=	2.880
TOTAL = 4.680									

Item	L	X	B	X	FACTOR	X	NO	=	SQ.MT
1	1.800	x	1.000	x	1.0	x	1	=	1.800
2	1.800	x	1.600	x	1.0	x	1	=	2.880
TOTAL = 4.680									

Item	L	X	B	X	FACTOR	X	NO	=	SQ.MT
1	1.800	x	1.000	x	1.0	x	1	=	1.800
2	1.800	x	1.600	x	1.0	x	1	=	2.880
TOTAL = 4.680									

Item	L	X	B	X	FACTOR	X	NO	=	SQ.MT
1	1.800	x	1.000	x	1.0	x	1	=	1.800
2	1.800	x	1.600	x	1.0	x	1	=	2.880
TOTAL = 4.680									

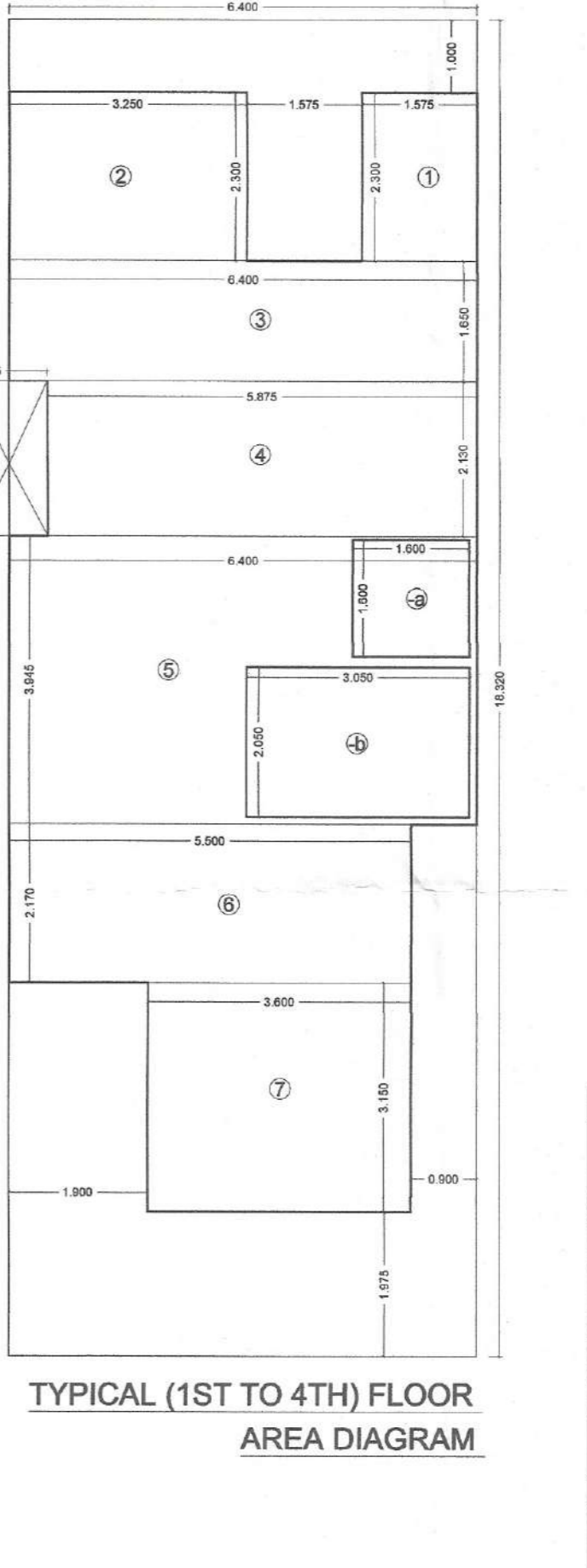
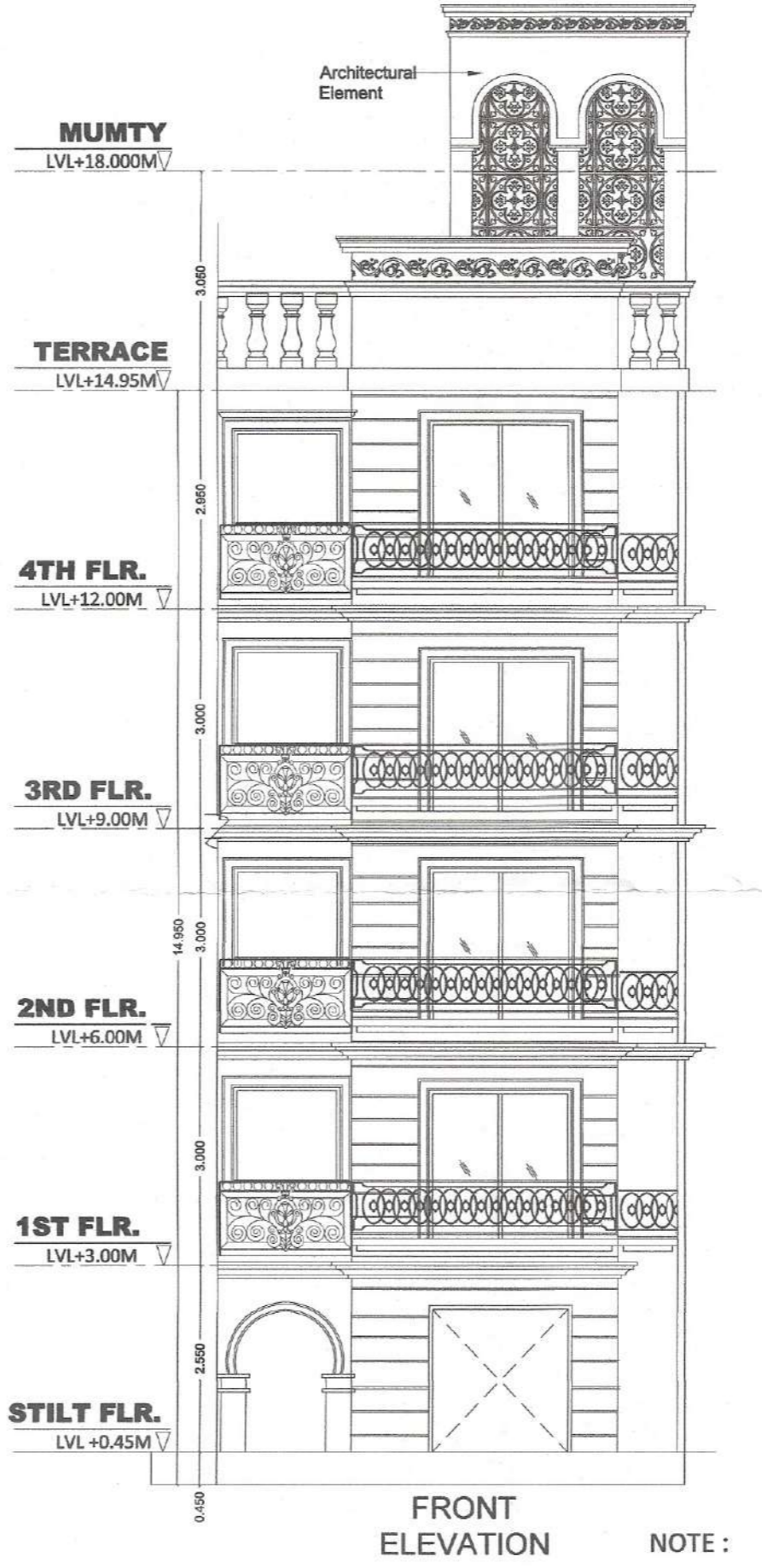
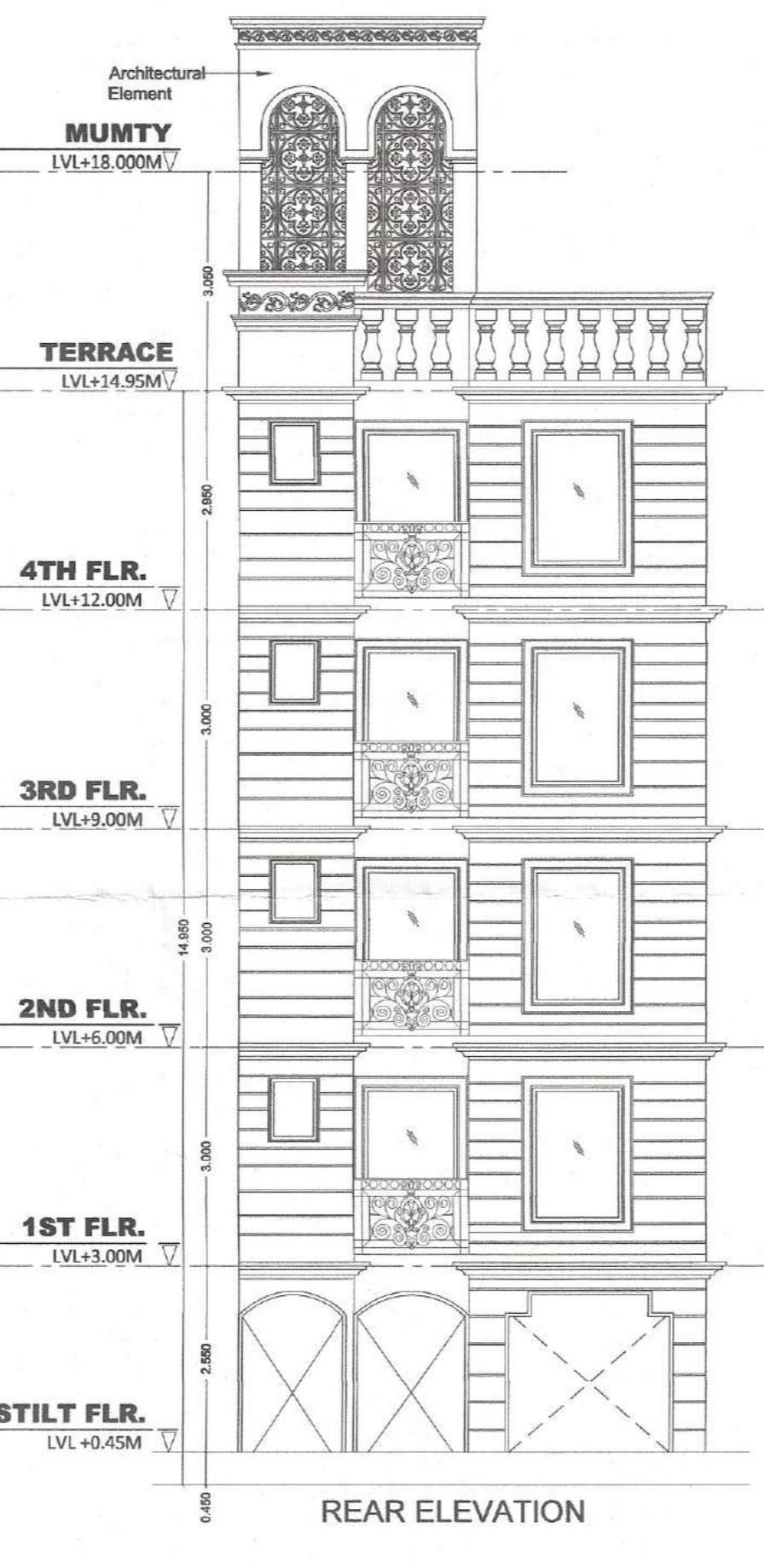
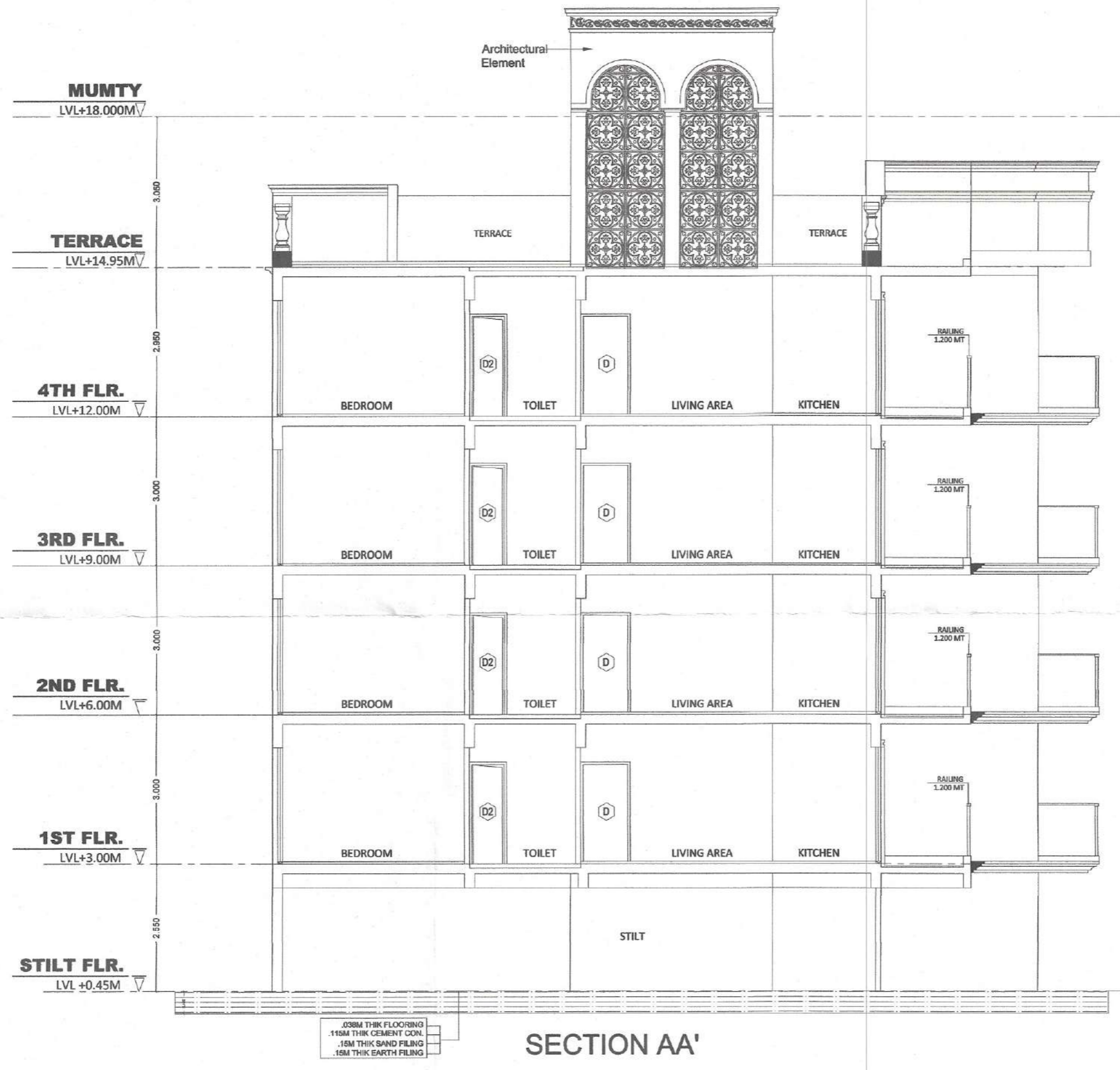
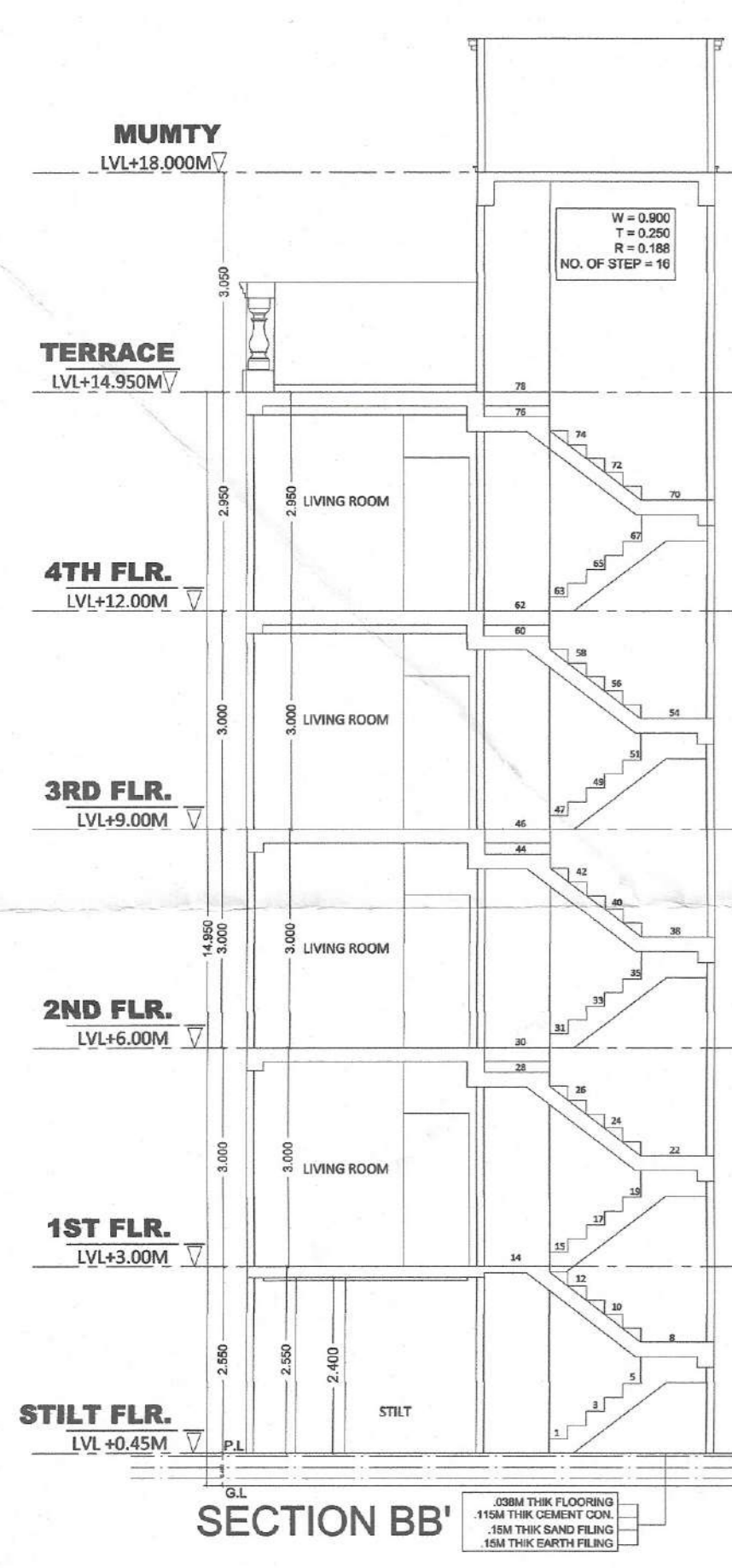
Item	L	X	B	X	FACTOR	X	NO	=	SQ.MT
1	1.800	x	1.000	x	1.0	x	1	=	1.800
2	1.800	x	1.600	x	1.0	x	1	=	2.880
TOTAL = 4.680									

Item	L	X	B	X	FACTOR	X	NO	=	SQ.MT
1	1.800	x	1.000	x	1.0	x	1	=	1.800
2	1.800	x	1.600	x	1.0	x	1	=	2.880
TOTAL = 4.680									

Item	L	X	B	X	FACTOR	X	NO	=	SQ.MT
1	1.800	x	1.000	x	1.0	x	1	=	1.800
2	1.800	x	1.600	x	1.0	x	1	=	2.880
TOTAL = 4.680									

Item	L	X	B	X	FACTOR	X	NO	=	SQ.MT
1	1.800	x	1.000	x	1.0	x	1	=	1.800
2	1.800	x	1.600	x	1.0	x	1	=	2.880
TOTAL = 4.680									

Item	L	X	B	X	FACTOR	X	NO	=	SQ.MT
1	1.800	x	1.000	x	1.0	x	1	=	1.800
2	1.800	x	1.600	x	1.0	x	1	=	2.880
TOTAL = 4.680									



Item	L	X	B	X	FACTOR	X	NO	=	SQ.MT
1	1.800	x	1.000	x	1.0	x	1	=	1.800
2	1.800	x	1.600	x	1.0	x	1	=	2.880