

ELEVATION MARK :



APPROVED FOR THE PROJECT BY
MUNICIPALITY ENGINEER
MUNICIPALITY ENGINEER
MUNICIPALITY ENGINEER

GENERAL NOTES:
1. ALL DIMENSIONS LEVELS ARE IN METERS/FEET.
2. ALL DIMENSIONS ARE TO FACE UNLESS SPECIFIED OTHERWISE.
3. COLUMN ARE TO BE PROVIDED AND SHALL BE AS PER REQUIREMENTS.
4. GRADE WATER OUT-FLOW THROUGH CENTRAL DRAINAGE SYSTEM.
5. ALL LIFTS & MACHINE ROOMS ARE AS PER IS STANDARD.

DRG. TITLE
ELEVATIONS OF TOWER - 6

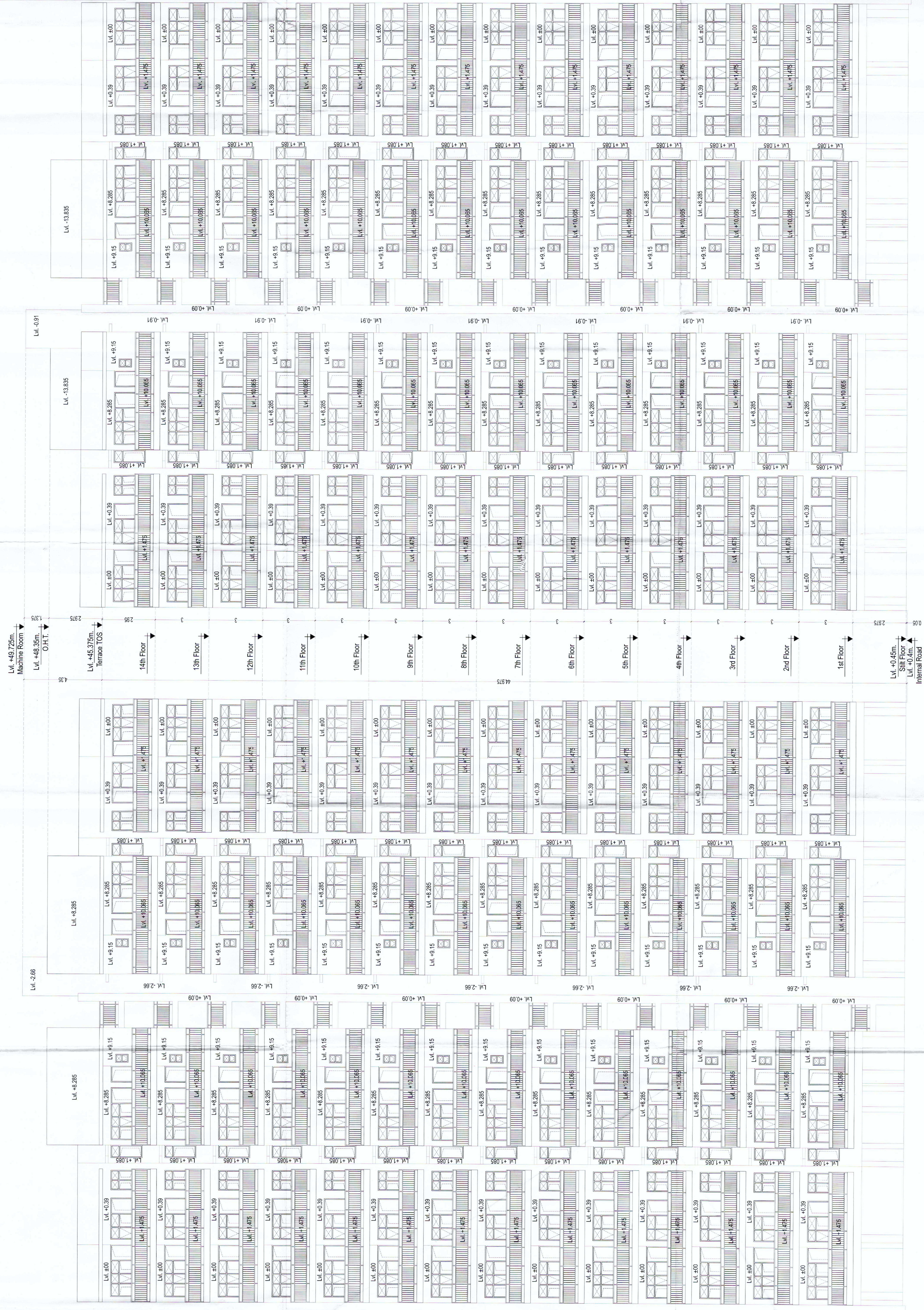
PROJECT
PROPOSED BUILDING PLAN OF AFFORDABLE GROUP HOUSING COLONY OVER AN AREA MEASURING 6.50 ACRES (LICENSE NO. 77 DATED - 24/09/2021) IN SECTOR - 68A, GURUGRAM BEING DEVELOPED BY FELDON DEVELOPERS PVT. LTD. & OTHERS IN COLLABORATION WITH GCC INFRA

Architect's Signature
Developer's Signature

For GCC INFRA
Autonomous Signatory

ARCHITECT :
creative line
architects interior designers & planners
phone: 0120-428127, 4318113248
www.creativeline.com, email: creativeline@creativeline.com

DATE	SCALE	NORTH
Dec-2021	1:100	
DEALT BY	CHKD BY	DRG. NO.
VIKAS	NAVDEEP	21



REAR ELEVATION

FRONT ELEVATION