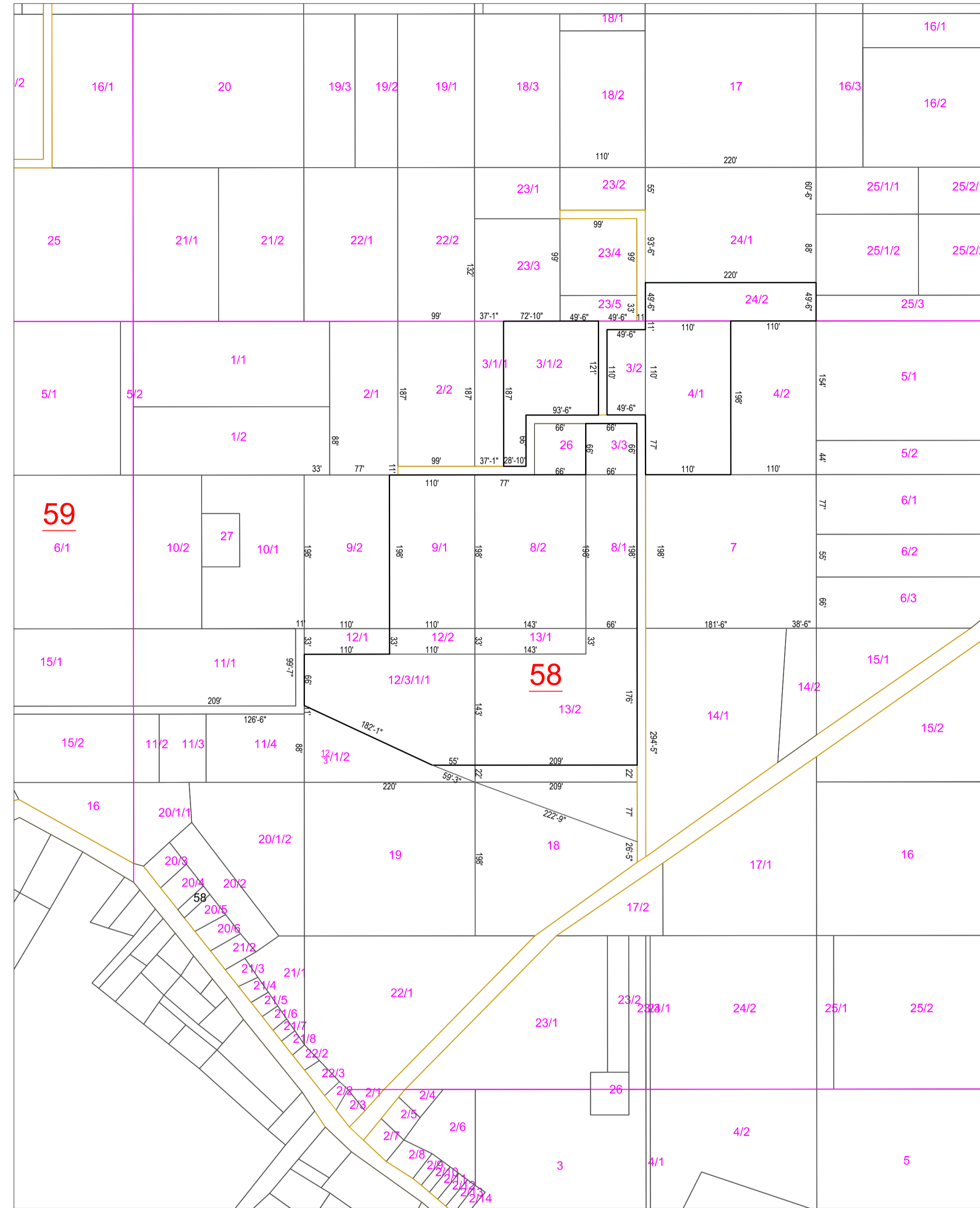
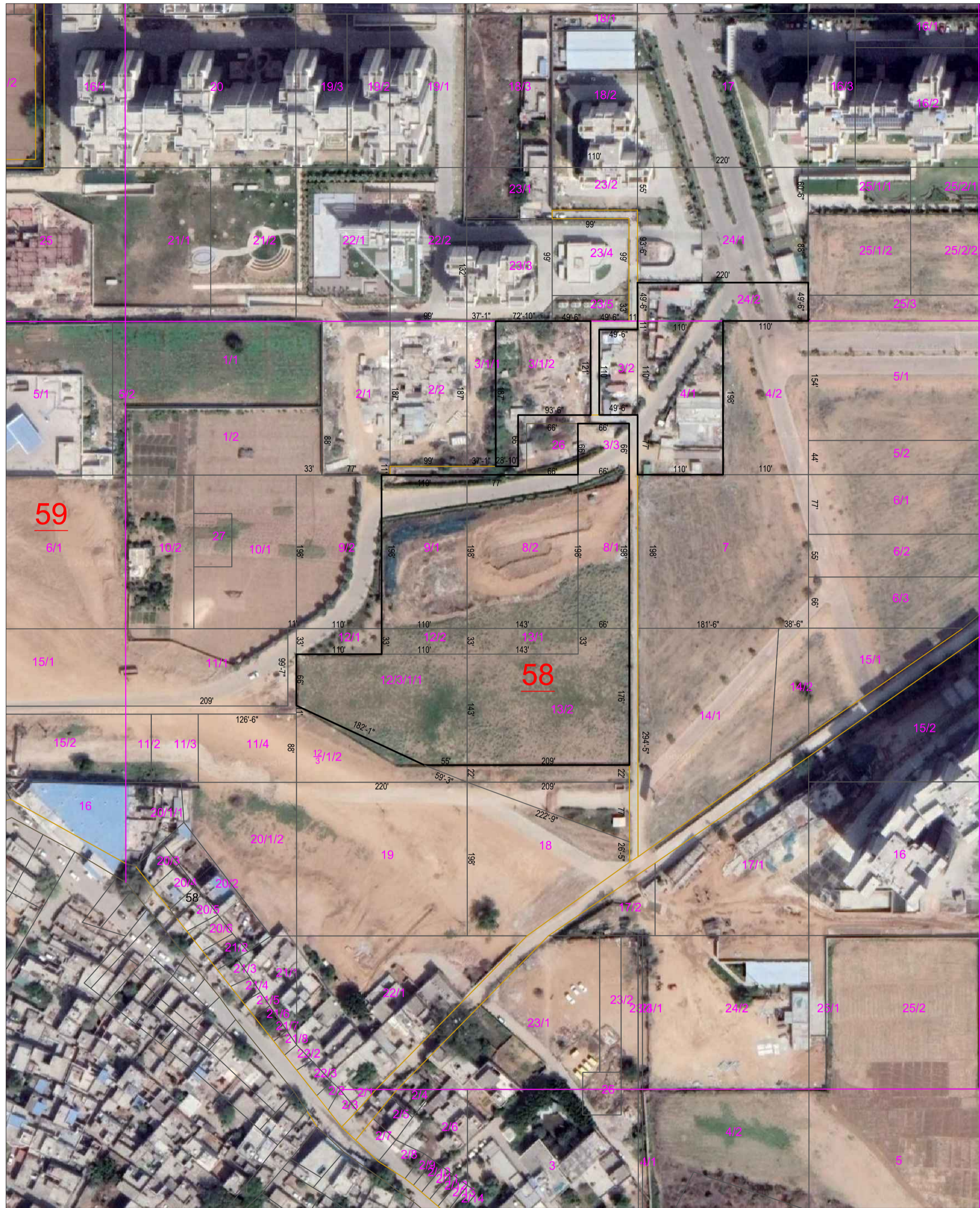


# DEMARICATION MAP OF VILLAGE NAURANGPUR TEHSIL MANESAR, GURUGRAM.



**Note :-**

1. All dimensions are in Feet unless otherwise mentioned, where as dimensions in killa block are mentioned in Karam for the reference purpose only.
2. The revenue unit - 1 Karam = 5'-6"= 1.676 Meters.
3. Least count unit for revenue measurement is 1 Karam = 5'-6"= 1.676M.
4. Do not scale the drawing if in doubt please ask !
5. Sijra dimensions are followed & matched from field book and masavi.
6. This drawing is to be read in conjunction with drawing no.- Sijra Map Naurangpur.

**Demarcation Report :-**

1. Demarcation for the Mustkeel No. 48, Killa No. 24/2, Mustkeel No. 58, Killa No. 3/1/2, 3/2, 3/3, 4/1, 8/1, 8/2, 9/1, 12/2, 12/3/1/1, 13/1, 13/2, Naurangpur Tehsil Manesar, Gurugram has been done by the orders of revenue officer- T.S.M/ D.G.P.S (RTK).
2. For the demarcation of the above said mustkeel numbers/khasra numbers the process has been adopted is mentioned below:-
3. By the orders of revenue officer - our survey team reached at site with all required survey equipments T.S.M/D.G.P.S(R.T.K) measuring tape on 05 March 2022 at 10 A.M at site Naurangpur tehsil Manesar, Gurugram.
4. The photo copies of sijra map, field book required for demarcation were provided by the revenue officials in the presence of villagers.
5. At 11.00 A.M our team started the survey of the site with T.S.M/ D.G.P.S (R.T.K) in the presence of revenue officials, Village staff for mutually agreed reference points were fixed and shown to every one by the revenue officials as mentioned below-
  - 5.1.RF-1- Mustkeel No. 69, Killa No. 01, North West Mustkeel Stone.
  - 5.2.RF-2- Mustkeel No. 69, Killa No. 05, North East Mustkeel Stone.
  - 5.3.RF-3- Mustkeel No. 55, Killa No. 21, South West Mustkeel Stone.
6. Three control points were fixed with D.G.P.S (R.T.K) to set the global references and to get accuracy and thereafter cadastral survey was carried out by picking references point fixed by revenue officials.
7. The "survey data" was then transferred from T.S.M/ D.G.P.S(R.T.K) on computers in "Auto Plotter" format (a software to prepare the survey drawing) and the survey drawing was then converted in AUTO-CAD format.
8. The sijra map received from revenue official was scanned on high resolution scanner and then digitized in AUTO-CAD format referring each side of individual khasra (E,W,N,S) dimensions from field book (provided by the revenue official and then converted the digitized drawing in the block or one identity).
9. Sijra block was checked and verified by the revenue officials.
10. Thereafter survey drawing was superimposed on digitized sijra block aligning with the reference points fixed by revenue officials and on google earth part plan of Naurangpur village (area taken for image as surveyed area).
11. The required killa Nos. were highlighted. The corners of required khasra nos. were marked on the drawing as ,marked.
12. Thereafter the co-ordinates of required points for the demarcation was computed on computers and transferred on D.G.P.S(R.T.K) for ground truthing to complete the demarcation .
13. With the prior permission of the revenue officials ground truthing at site was done on 05 March 2022 in the presence of revenue officials and villagers.
14. The demarcation at site was completed no. resistance was faced during ground truthing demarcation and final report is submitted herewith.
15. During consolidation measurement was done using zerib and now measurements is done using latest technology instrument so their is possibility of difference in area between 0 - 15 Sqy. Hence any encroachment between 0-15 Sqy. may be consider as non- considerable.

Client:-

Project:-  
**DEMARICATION WITH TSM/DGPS**

Drawing Title:-  
**Demarcation Plan/ Report**

Demarcation consultants:-  
**Reikan Engineering Consultant Pvt.Ltd**  
Office No. 202,1st Floor, Opp. HUDA Office  
Old Delhi Road, Sector-14  
Gurugram, Haryana- 122001  
Phone- 0124-4010775

Signature with Seal

Surveyed By	Manish Kumar	Drawn By	Vikram Yadav	Scale:-	1:1	
Comm. On.	05-03-2022	Fncd. Year	2021-2022			
Completed On	05-03-2022	Sheet Size	A-1			

Drawing No:-	Sheet No.-	Revision No.
	1 of 1	R 0

Feature Type	Symbol
13	Killa Number
25	Mustkeel Number
	Mustkeel Line
	Killa Line
	Land Outer
	Revenue Rasta
	Village Boundary
	Encroachment