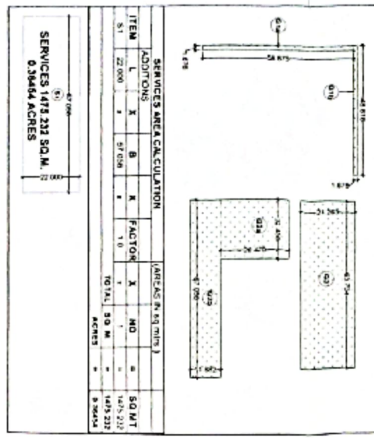


| STREETS | K. K. 14 M | 116.5925 ACRES | PERMISSIBLE | PROPOSED |
|---------------------|------------|----------------|-------------|------------|
| AREA UNDER SERVICES | AREA | PERCENTAGE | AREA | PERCENTAGE |
| 15.96250 | 15.96250 | 13.68250 | 36.56250 | 31.25000 |
| 11.03242 | 11.03242 | 44.61900 | 49.03339 | 42.81 |
| TOTAL SERVICE AREA | 26.99492 | 58.30150 | 85.59589 | 74.06000 |
| AREA UNDER SERVICES | AREA | PERCENTAGE | AREA | PERCENTAGE |
| 0.72291 | 0.72291 | 2.02532 | 2.15 | 2.21 |
| 4.83858 | 4.83858 | 13.73005 | 28.21 | 28.21 |
| 16.96250 | 16.96250 | 47.55757 | 100.00 | 100.00 |
| TOTAL | 18.69149 | 51.21295 | 132.80806 | 128.27111 |

| PLT NO | TO | W | L | AREA | NO. OF | TOTAL AREA |
|--------|----|--------|---|----------|--------|------------|
| 1 | 1 | 41.910 | 1 | 41.910 | 1 | 41.910 |
| 2 | 2 | 21.060 | 1 | 21.060 | 1 | 21.060 |
| 3 | 3 | 14.870 | 1 | 14.870 | 1 | 14.870 |
| 4 | 4 | 21.511 | 1 | 21.511 | 1 | 21.511 |
| 5 | 5 | 28.420 | 1 | 28.420 | 1 | 28.420 |
| 6 | 6 | 16.082 | 1 | 16.082 | 1 | 16.082 |
| 7 | 7 | 13.504 | 1 | 13.504 | 1 | 13.504 |
| 8 | 8 | 18.980 | 1 | 18.980 | 1 | 18.980 |
| 9 | 9 | 11.104 | 1 | 11.104 | 1 | 11.104 |
| 10 | 10 | 11.941 | 1 | 11.941 | 1 | 11.941 |
| 11 | 11 | 11.941 | 1 | 11.941 | 1 | 11.941 |
| 12 | 12 | 11.941 | 1 | 11.941 | 1 | 11.941 |
| 13 | 13 | 11.941 | 1 | 11.941 | 1 | 11.941 |
| 14 | 14 | 11.941 | 1 | 11.941 | 1 | 11.941 |
| 15 | 15 | 11.941 | 1 | 11.941 | 1 | 11.941 |
| 16 | 16 | 11.941 | 1 | 11.941 | 1 | 11.941 |
| 17 | 17 | 11.941 | 1 | 11.941 | 1 | 11.941 |
| 18 | 18 | 11.941 | 1 | 11.941 | 1 | 11.941 |
| 19 | 19 | 11.941 | 1 | 11.941 | 1 | 11.941 |
| 20 | 20 | 11.941 | 1 | 11.941 | 1 | 11.941 |
| 21 | 21 | 11.941 | 1 | 11.941 | 1 | 11.941 |
| 22 | 22 | 11.941 | 1 | 11.941 | 1 | 11.941 |
| 23 | 23 | 11.941 | 1 | 11.941 | 1 | 11.941 |
| 24 | 24 | 11.941 | 1 | 11.941 | 1 | 11.941 |
| 25 | 25 | 11.941 | 1 | 11.941 | 1 | 11.941 |
| 26 | 26 | 11.941 | 1 | 11.941 | 1 | 11.941 |
| 27 | 27 | 11.941 | 1 | 11.941 | 1 | 11.941 |
| 28 | 28 | 11.941 | 1 | 11.941 | 1 | 11.941 |
| 29 | 29 | 11.941 | 1 | 11.941 | 1 | 11.941 |
| 30 | 30 | 11.941 | 1 | 11.941 | 1 | 11.941 |
| 31 | 31 | 11.941 | 1 | 11.941 | 1 | 11.941 |
| 32 | 32 | 11.941 | 1 | 11.941 | 1 | 11.941 |
| 33 | 33 | 11.941 | 1 | 11.941 | 1 | 11.941 |
| 34 | 34 | 11.941 | 1 | 11.941 | 1 | 11.941 |
| 35 | 35 | 11.941 | 1 | 11.941 | 1 | 11.941 |
| 36 | 36 | 11.941 | 1 | 11.941 | 1 | 11.941 |
| 37 | 37 | 11.941 | 1 | 11.941 | 1 | 11.941 |
| 38 | 38 | 11.941 | 1 | 11.941 | 1 | 11.941 |
| 39 | 39 | 11.941 | 1 | 11.941 | 1 | 11.941 |
| 40 | 40 | 11.941 | 1 | 11.941 | 1 | 11.941 |
| 41 | 41 | 11.941 | 1 | 11.941 | 1 | 11.941 |
| 42 | 42 | 11.941 | 1 | 11.941 | 1 | 11.941 |
| 43 | 43 | 11.941 | 1 | 11.941 | 1 | 11.941 |
| 44 | 44 | 11.941 | 1 | 11.941 | 1 | 11.941 |
| 45 | 45 | 11.941 | 1 | 11.941 | 1 | 11.941 |
| 46 | 46 | 11.941 | 1 | 11.941 | 1 | 11.941 |
| 47 | 47 | 11.941 | 1 | 11.941 | 1 | 11.941 |
| 48 | 48 | 11.941 | 1 | 11.941 | 1 | 11.941 |
| 49 | 49 | 11.941 | 1 | 11.941 | 1 | 11.941 |
| 50 | 50 | 11.941 | 1 | 11.941 | 1 | 11.941 |
| 51 | 51 | 11.941 | 1 | 11.941 | 1 | 11.941 |
| 52 | 52 | 11.941 | 1 | 11.941 | 1 | 11.941 |
| 53 | 53 | 11.941 | 1 | 11.941 | 1 | 11.941 |
| 54 | 54 | 11.941 | 1 | 11.941 | 1 | 11.941 |
| 55 | 55 | 11.941 | 1 | 11.941 | 1 | 11.941 |
| 56 | 56 | 11.941 | 1 | 11.941 | 1 | 11.941 |
| 57 | 57 | 11.941 | 1 | 11.941 | 1 | 11.941 |
| 58 | 58 | 11.941 | 1 | 11.941 | 1 | 11.941 |
| 59 | 59 | 11.941 | 1 | 11.941 | 1 | 11.941 |
| 60 | 60 | 11.941 | 1 | 11.941 | 1 | 11.941 |
| TOTAL | | | | 1335.970 | 60 | 4833.528 |

| ITEM | ADDITIONS | NO. | NO. | NO. |
|-------|-----------|-----|-----|----------|
| 1 | 1 | 1 | 1 | 1 |
| 2 | 2 | 2 | 2 | 2 |
| 3 | 3 | 3 | 3 | 3 |
| 4 | 4 | 4 | 4 | 4 |
| 5 | 5 | 5 | 5 | 5 |
| 6 | 6 | 6 | 6 | 6 |
| 7 | 7 | 7 | 7 | 7 |
| 8 | 8 | 8 | 8 | 8 |
| 9 | 9 | 9 | 9 | 9 |
| 10 | 10 | 10 | 10 | 10 |
| 11 | 11 | 11 | 11 | 11 |
| 12 | 12 | 12 | 12 | 12 |
| 13 | 13 | 13 | 13 | 13 |
| 14 | 14 | 14 | 14 | 14 |
| 15 | 15 | 15 | 15 | 15 |
| 16 | 16 | 16 | 16 | 16 |
| 17 | 17 | 17 | 17 | 17 |
| 18 | 18 | 18 | 18 | 18 |
| 19 | 19 | 19 | 19 | 19 |
| 20 | 20 | 20 | 20 | 20 |
| 21 | 21 | 21 | 21 | 21 |
| 22 | 22 | 22 | 22 | 22 |
| 23 | 23 | 23 | 23 | 23 |
| 24 | 24 | 24 | 24 | 24 |
| 25 | 25 | 25 | 25 | 25 |
| 26 | 26 | 26 | 26 | 26 |
| 27 | 27 | 27 | 27 | 27 |
| 28 | 28 | 28 | 28 | 28 |
| 29 | 29 | 29 | 29 | 29 |
| 30 | 30 | 30 | 30 | 30 |
| 31 | 31 | 31 | 31 | 31 |
| 32 | 32 | 32 | 32 | 32 |
| 33 | 33 | 33 | 33 | 33 |
| 34 | 34 | 34 | 34 | 34 |
| 35 | 35 | 35 | 35 | 35 |
| 36 | 36 | 36 | 36 | 36 |
| 37 | 37 | 37 | 37 | 37 |
| 38 | 38 | 38 | 38 | 38 |
| 39 | 39 | 39 | 39 | 39 |
| 40 | 40 | 40 | 40 | 40 |
| 41 | 41 | 41 | 41 | 41 |
| 42 | 42 | 42 | 42 | 42 |
| 43 | 43 | 43 | 43 | 43 |
| 44 | 44 | 44 | 44 | 44 |
| 45 | 45 | 45 | 45 | 45 |
| 46 | 46 | 46 | 46 | 46 |
| 47 | 47 | 47 | 47 | 47 |
| 48 | 48 | 48 | 48 | 48 |
| 49 | 49 | 49 | 49 | 49 |
| 50 | 50 | 50 | 50 | 50 |
| 51 | 51 | 51 | 51 | 51 |
| 52 | 52 | 52 | 52 | 52 |
| 53 | 53 | 53 | 53 | 53 |
| 54 | 54 | 54 | 54 | 54 |
| 55 | 55 | 55 | 55 | 55 |
| 56 | 56 | 56 | 56 | 56 |
| 57 | 57 | 57 | 57 | 57 |
| 58 | 58 | 58 | 58 | 58 |
| 59 | 59 | 59 | 59 | 59 |
| 60 | 60 | 60 | 60 | 60 |
| TOTAL | | | | 4833.528 |



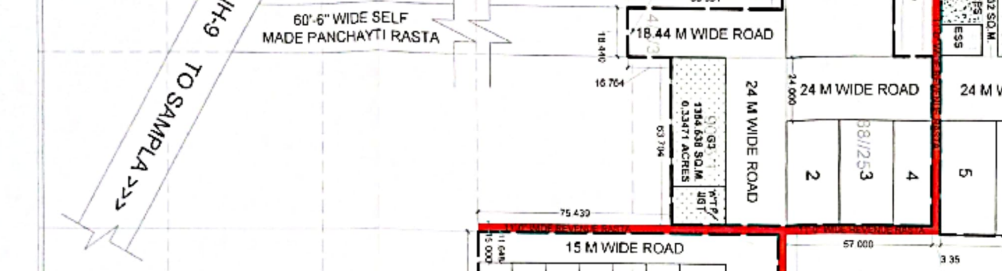
TO ROHTAK
TO SAMPLA

60'-6" WIDE SELF MADE PANCHAYTI RASTA

135 K.-14 M. OR 16,96250 ACRES OR 68644.693 SQ.M.

| LEGENDS |
|-------------------|
| Plot Boundary |
| Revenue Rasta |
| Services Area |
| STP/WP, ETP & ESS |
| Green Area |
| Industrial Plot |
| Road |

135 K.-14 M. OR 16,96250 ACRES OR 68644.693 SQ.M.

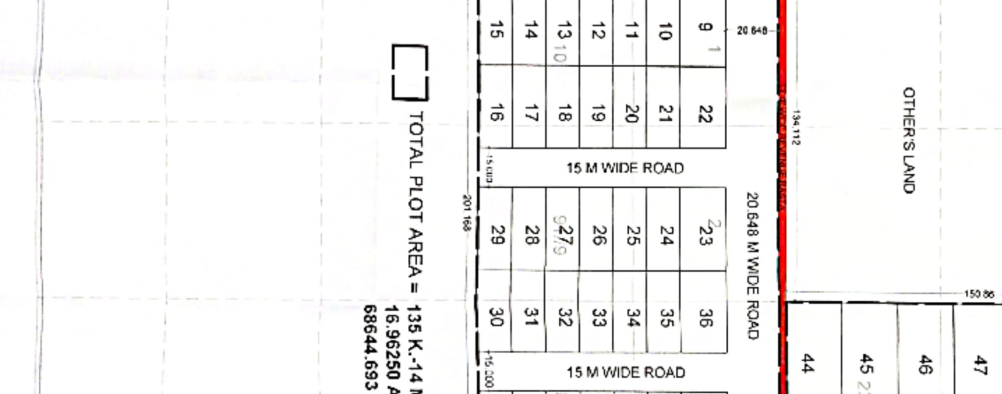


1. AVUL PLAN FOR DEVELOPMENT INDUSTRIAL PLOTTING COLONY UNDER ENTERPRISE PROMOTION FOR V.2015 PULLY DATED 01.10.2015 ON THE LAND M OR 68644.693 SQ.M. AT VILLAGE GANDHAKI TESHU SAMPLA, DISTRICT ROHTAK, HARYANA TO BE DEVELOPED BY M/S NIGRAH DEVELOPERS LLP IN COLLABORATION WITH SH. SUDHARJAN RUTIAM DESIGN

SCALE: 1:1000 (SAL)

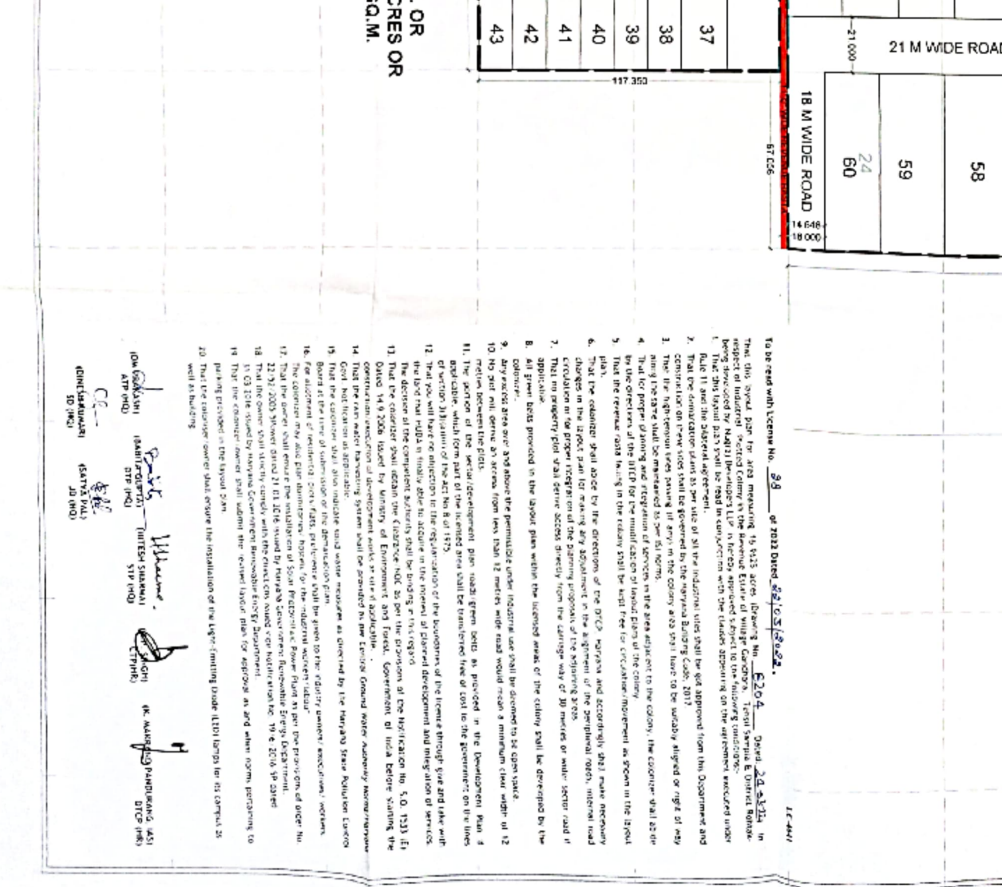
DRAWN BY: KARAN

135 K.-14 M. OR 16,96250 ACRES OR 68644.693 SQ.M.



135 K.-14 M. OR 16,96250 ACRES OR 68644.693 SQ.M.

135 K.-14 M. OR 16,96250 ACRES OR 68644.693 SQ.M.



135 K.-14 M. OR 16,96250 ACRES OR 68644.693 SQ.M.

135 K.-14 M. OR 16,96250 ACRES OR 68644.693 SQ.M.