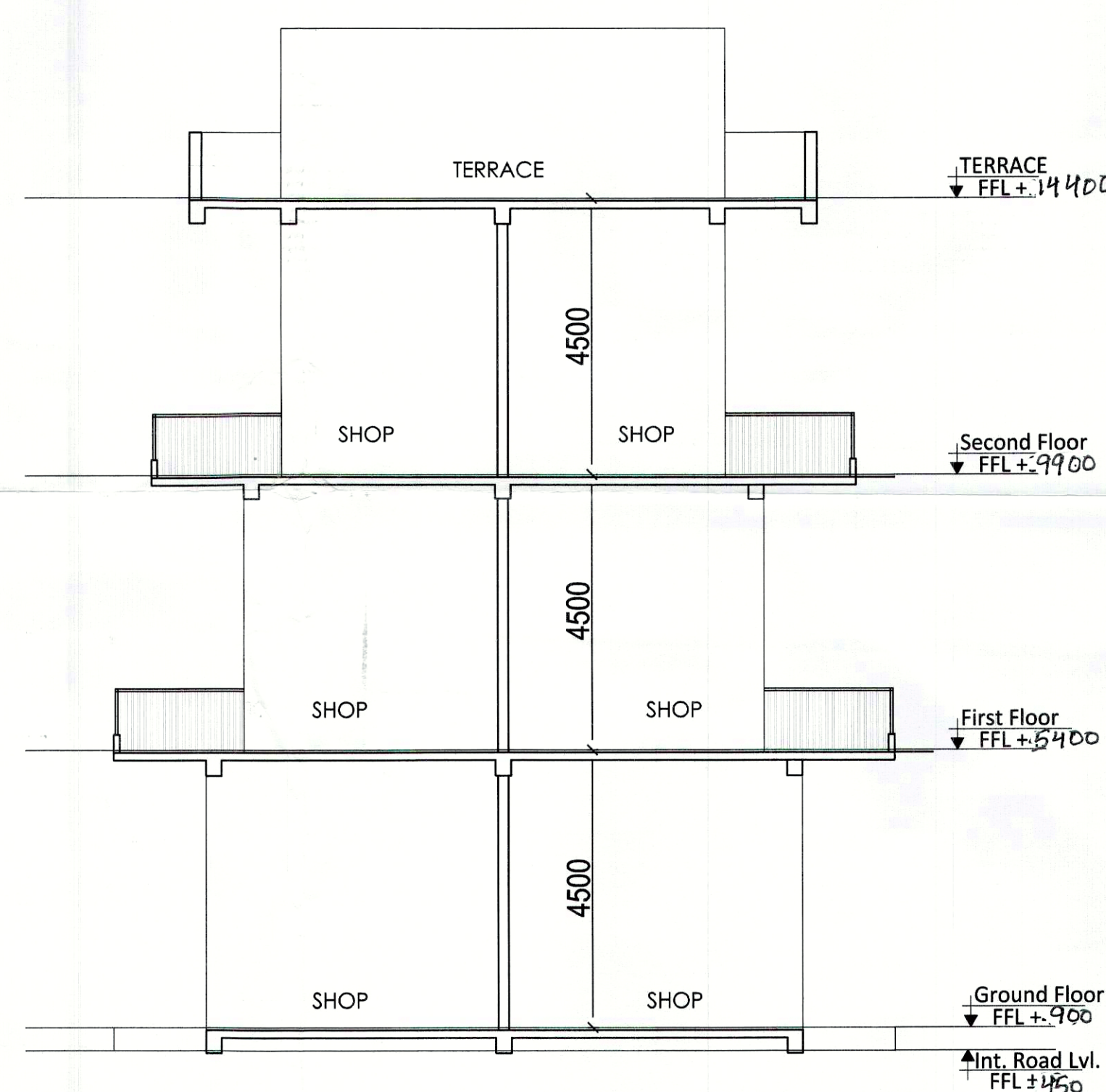


ELEVATION



SECTION AT XX'



SECTION AT YY'

PROJECT (HQ) S.T.P. Member Secretary BPC  
 S.T.P. Member Secretary BPC  
 S.T.P. Member Secretary BPC

DDT (T) MEMBER BPAC

Rain (Vihar Bassi) AD(HQ)

P.A.

A.T.P.

PROJECT:  
 Approval of Building Plan of Affordable Group Housing colony measuring 5.89 acres (License no. 63 dated 01-09-2021) in Revenue Estate of Village Gadoli Kalan in Sector 37D, Gurugram. Being developed by LALWANI BROTHERS BUILDCON LLP in COLLABORATION WITH STERNAL BUILDCON PVT. LTD.

ARCHITECT:  
 GIAN P. MATHUR AND ASSOCIATES (P) LTD.  
 C - 55, East Of Kailash, New Delhi-110065  
 T : 465995991 F 46599512  
 E : info@gpmindia.com I W : www.gpmindia.com

services consultant  
**Consummate Engineering Services (P) Ltd.**  
 Head Office : 10 - 61, Sector - 67, Noida - 201 301  
 Tel : (0120) 2993900 ( 30 Lines )  
 Lko Office : R 006, Rohtas Plumeria, Gomti Nagar, Lucknow  
 e mail : mail@cespln, website : www.cespln

DRAWING TITLE:  
 ELEVATION AND SECTION

D.N. - ARCHITECT'S SIGN OWNER'S SIGN

SCALE:- 1:100

DATE:- 20 AUG 2021  
 DRAWN BY:- ANANT

CHECK BY:- NAMITA

GIAN P. MATHUR  
 ARCHITECT  
 B. Arch., M.C.O. I.I.A.  
 CA No. 802869

DIRECTION