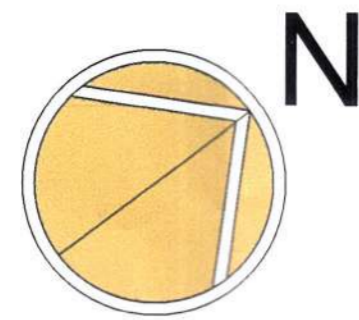
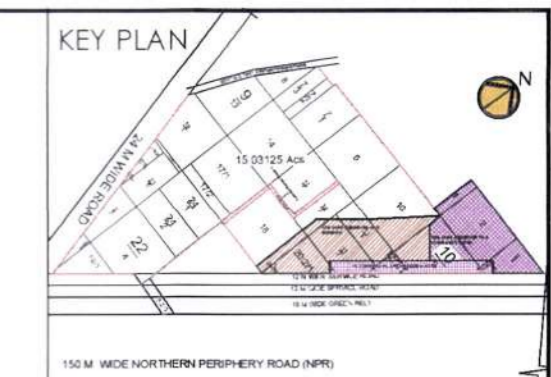


LEGEND:

- PLOT LINE
- BASEMENT LINE
- SETBACK LINE
- PODIUM LINE



LEKH BUILDTech PVT. LTD.
LICENCE NO. 123 OF 2019



Checked and found ok for Public Health (Internal) Service only subject to comments in forwarding sheet to ACE/HQ. 216453
Dt: 22/01/2021
Additional Civil Engineer (H.O.)
HSVP, Planning

DDT (H.O.)
Member
BPAC

J.D. P.A. A.P.

LEGEND -

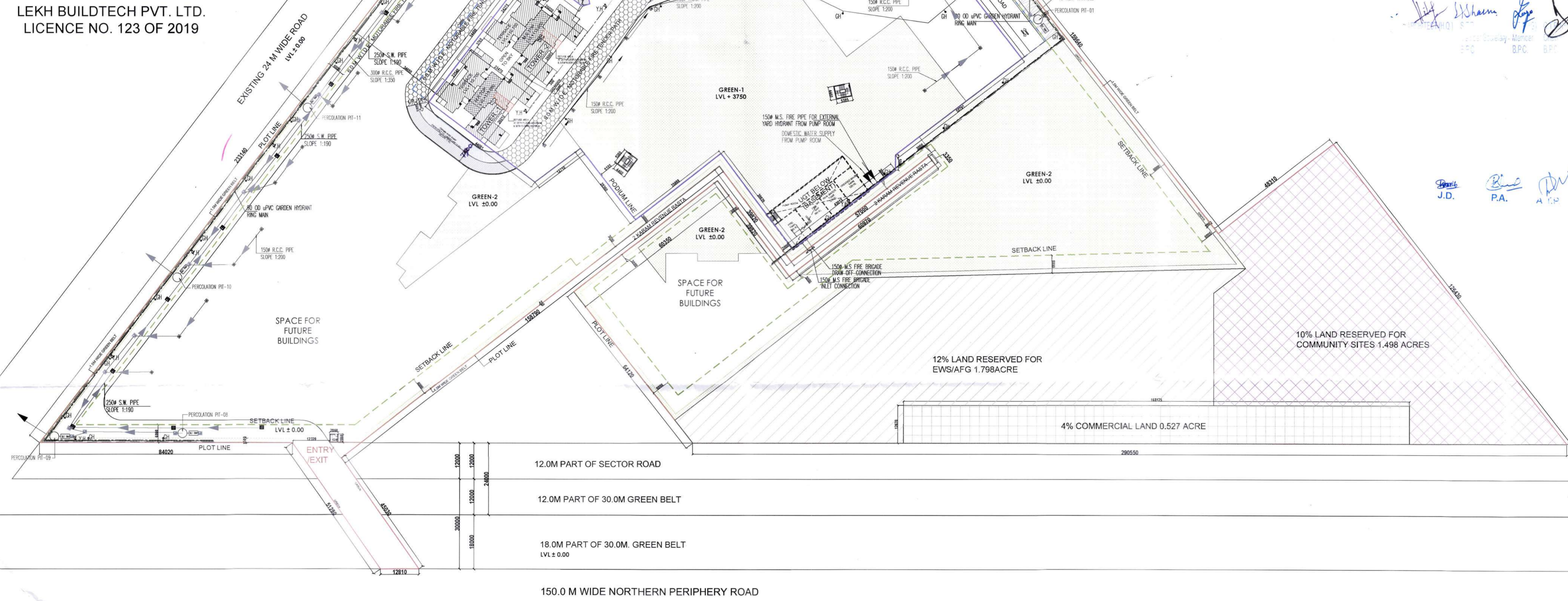
- SEWERAGE MANHOLE
- DRAINAGE MANHOLE
- CATCH BASIN
- 40% GREEN HYDRANT
- DOMESTIC WATER SUPPLY PIPE
- FRESHING WATER SUPPLY PIPE
- FIRE HYDRANT LINE
- 4TH YRD HYDRANT

LEGEND -

- SEWERAGE MANHOLE
- DRAINAGE MANHOLE
- CATCH BASIN

LEGEND -

- 40% GREEN HYDRANT
- DOMESTIC WATER SUPPLY PIPE
- FRESHING WATER SUPPLY PIPE
- FIRE HYDRANT LINE
- 4TH YRD HYDRANT



NILP-Housing Sector 113, Gurugram

Area Statement	ACRES	Sq.M.
TOTAL SITE AREA	15.03125	60829.214
AREA UNDER 30M GREEN BELT (including 120m wide service road)	0.9440	38104.00
AREA UNDER 30M GREEN BELT (excluding 120m wide service road)	14.08725	57045.214
NET PLANNED AREA (NPA)	14.08725	57045.214
AREA RESERVED FOR EWS/AFG (10% OF SITE AREA)	1.4187	5704.521
AREA RESERVED FOR COMMUNITY SITE (10% OF SITE AREA)	1.4187	5704.521
AREA AVAILABLE FOR GROUP HOUSING + COMMERCIAL	11.24978	45636.172
RESIDENTIAL AREA	9.0%	131.186
COMMERCIAL AREA	4%	527.534
GROUND COVERAGE		
PERMISSIBLE GROUND COVERAGE 30% OF RESIDENTIAL AREA	30.00%	17609.204
PROPOSED RESIDENTIAL GROUND COVERAGE OF TOWERS	4.354%	3208.988
PROPOSED RESIDENTIAL GROUND COVERAGE	4.361%	3226.248
FAR		
PERMISSIBLE FAR FOR HOUSING 102% OF RESIDENTIAL AREA	124.802%	64033.837
TOTAL PROPOSED FAR FOR RESIDENTIAL	124.802%	63931.636
NON-FAR AREA		
PROPOSED RESIDENTIAL TOWER NON-FAR AREA		6172.205
PROPOSED DIRECT NON-FAR AREA (Off Floor - Tower Glass Area)		1275.300
PROPOSED BASEMENT NON-FAR AREA		18186.100
TOTAL PROPOSED NON-FAR AREA		20673.805
GREEN		
PERMISSIBLE GREEN @ 10%	15.03125	60829.214
PROPOSED GREEN-1 (Above Podium)	11.552%	7242.675
PROPOSED GREEN-2 (Below Earth & 1.5m Green Belt)	15.03125	60829.214
TOTAL PROPOSED GREEN	26.58375	107256.103
DENSITY		
PERMISSIBLE DENSITY @ MAX 300PPA	3990 PERSONS	
PERMISSIBLE DENSITY	791 PERSONS	
PROPOSED TOTAL DENSITY 2m	3220 PERSONS	
PROPOSED TOTAL DENSITY 2m	644 UNITS	
PROPOSED TOTAL DENSITY 2m	644 UNITS	
PARKING		
REQUIRED COB @ 1:5 X 0.00	990 COB	
PROPOSED TOTAL FAR OF TOWERS	63931.636	
PROPOSED TOTAL FAR OF TOWERS	6172.205	

FAR & NON FAR CALCULATION OF ALL TOWERS

BUILDING BLOCKS	TOWER-1			TOWER-2			TOWER-3A			TOWER-3B			TOWER-3C			TOTAL		
	FAR	NON FAR	GROSS AREA	FAR	NON FAR	GROSS AREA	FAR	NON FAR	GROSS AREA	FAR	NON FAR	GROSS AREA	FAR	NON FAR	GROSS AREA	TOTAL FAR OF TOWERS ON FLOORS	TOTAL NON FAR OF TOWERS ON FLOORS	TOTAL GROSS AREA OF TOWERS ON FLOORS
1st LVL	80.54	354.87	435.791	80.605	374.829	455.435	104.512	336.303	440.816	85.720	350.308	436.027	35.720	300.308	436.027	437.511	1766.585	2204.096
2nd LVL	231.969	222.278	254.245	232.987	24.361	258.348	388.446	22.278	410.723	388.446	22.278	410.723	388.446	410.723	388.446	1631.291	113.471	1744.763
3rd LVL	232.707	222.278	254.986	234.727	24.361	259.088	389.185	22.278	411.463	389.185	22.278	411.463	389.185	411.463	389.185	1634.990	113.471	1748.462
4th LVL	232.707	222.278	254.986	234.727	24.361	259.088	389.185	22.278	411.463	389.185	22.278	411.463	389.185	411.463	389.185	1634.990	113.471	1748.462
5th LVL	389.185	222.278	411.463	410.969	24.361	434.430	389.185	22.278	411.463	389.185	22.278	411.463	389.185	411.463	389.185	1966.810	113.471	2080.282
6th LVL	389.185	222.278	411.463	410.969	24.361	434.430	389.185	22.278	411.463	389.185	22.278	411.463	389.185	411.463	389.185	1966.810	113.471	2080.282
7th LVL	389.185	222.278	411.463	410.969	24.361	434.430	389.185	22.278	411.463	389.185	22.278	411.463	389.185	411.463	389.185	1966.810	113.471	2080.282
8th LVL	389.185	222.278	411.463	410.969	24.361	434.430	389.185	22.278	411.463	389.185	22.278	411.463	389.185	411.463	389.185	1966.810	113.471	2080.282
9th LVL	389.185	222.278	411.463	410.969	24.361	434.430	389.185	22.278	411.463	389.185	22.278	411.463	389.185	411.463	389.185	1966.810	113.471	2080.282
10th LVL	389.185	222.278	411.463	410.969	24.361	434.430	389.185	22.278	411.463	389.185	22.278	411.463	389.185	411.463	389.185	1966.810	113.471	2080.282
11th LVL	389.185	222.278	411.463	410.969	24.361	434.430	389.185	22.278	411.463	389.185	22.278	411.463	389.185	411.463	389.185	1966.810	113.471	2080.282
12th LVL	389.185	222.278	411.463	410.969	24.361	434.430	389.185	22.278	411.463	389.185	22.278	411.463	389.185	411.463	389.185	1966.810	113.471	2080.282
13th LVL	389.185	222.278	411.463	410.969	24.361	434.430	389.185	22.278	411.463	389.185	22.278	411.463	389.185	411.463	389.185	1966.810	113.471	2080.282
14th LVL	389.185	222.278	411.463	410.969	24.361	434.430	389.185	22.278	411.463	389.185	22.278	411.463	389.185	411.463	389.185	1966.810	113.471	2080.282
15th LVL	389.185	222.278	411.463	410.969	24.361	434.430	389.185	22.278	411.463	389.185	22.278	411.463	389.185	411.463	389.185	1966.810	113.471	2080.282
16th LVL	389.185	222.278	411.463	410.969	24.361	434.430	389.185	22.278	411.463	389.185	22.278	411.463	389.185	411.463	389.185	1966.810	113.471	2080.282
17th LVL	389.185	222.278	411.463	410.969	24.361	434.430	389.185	22.278	411.463	389.185	22.278	411.463	389.185	411.463	389.185	1966.810	113.471	2080.282
18th LVL	389.185	222.278	411.463	410.969	24.361	434.430	389.185	22.278	411.463	389.185	22.278	411.463	389.185	411.463	389.185	1966.810	113.471	2080.282
19th LVL	389.185	222.278	411.463	410.969	24.361	434.430	389.185	22.278	411.463	389.185	22.278	411.463	389.185	411.463	389.185	1966.810	113.471	2080.282
20th LVL	389.185	222.278	411.463	410.969	24.361	434.430	389.185	22.278	411.463	389.185	22.278	411.463	389.185	411.463	389.185	1966.810	113.471	2080.282
21st LVL	389.185	222.278	411.463	410.969	24.361	434.430	389.185	22.278	411.463	389.185	22.278	411.463	389.185	411.463	389.185	1966.810	113.471	2080.282
22nd LVL	389.185	222.278	411.463	410.969	24.361	434.430	389.185	22.278	411.463	389.185	22.278	411.463	389.185	411.463	389.185	1966.810	113.471	2080.282
23rd LVL	389.185	222.278	411.463	410.969	24.361	434.430	389.185	22.278	411.463	389.185	22.278	411.463	389.185	411.463	389.185	1966.810	113.471	2080.282
24th LVL	389.185	222.278	411.463	410.969	24.361	434.430	389.185	22.278	411.463	389.185	22.278	411.463	389.185	411.463	389.185	1966.810	113.471	2080.282
25th LVL	389.185	222.278	411.463	410.969	24.361	434.430	389.185	22.278	411.463	389.185	22.278	411.463	389.185	411.463	389.185	1966.810	113.471	2080.282
26th LVL	389.185	222.278	411.463	410.969	24.361	434.430	389.185	22.278	411.463	389.185	22.278	411.463	389.185	411.463	389.185	1966.810	113.471	2080.282
27th LVL	389.185	222.278	411.463	410.969	24.361	434.430	389.185	22.278	411.463	389.185	22.278	411.463	389.185	411.463	389.185	1966.810	113.471	2080.282
28th LVL	389.185	222.278	411.463	410.969	24.361	434.430	389.185	22.278	411.463	389.185	22.278	411.463	389.185	411.463	389.185	1966.810	113.471	2080.282
29th LVL	389.185	222.278	411.463	410.969	24.361	434.430	389.185	22.278	411.463	389.185	22.278	411.463	389.185	411.463	389.185	1966.810	113.471	2080.282
30th LVL	389.185	222.278	411.463	410.969	24.361	434.430	389.185	22.278	411.463	389.185	22.278	411.463	389.185	411.463	389.185	1966.810	113.471	2080.282
31st LVL	389.185	222.278	411.463	410.969	24.361	434.430	389.185	22.278	411.463	389.185	22.278	411.463	389.185	411.463	389.185	1966.810	113.471	2080.282
32nd LVL	389.185	222.278	411.463	410.969	24.361	434.430	389.185	22.278	411.463	389.185	22.278	411.463	389.185	411.463	389.185	1966.810	113.471	2080.282
33rd LVL	389.185	222.278	411.463	410.969	24.361	434.430	389.185	22.278	411.463	389.185	22.278	411.463	389.185	411.463	389.185	1966.810	113.471	2080.282
34th LVL	389.185	222.278	411.463	410.969	24.361	434.430	389.185	22.278	411.463	389.185	22.278	411.463	389.185	411.463	389.185	1966.810	113.471	2080.282
35th LVL	389.185	222.278	411.463	410.969	24.361	434.430	389.185	22.278	411.463	389.185	22.278	411.463	389.185	411.463	389.185	1966.810	113.471	2080.282
36th LVL	389.185	222.278	411.463	410.969	24.361	434.430	389.185	22.278	411.463	389.185	22.278	411.463	389.185	411.463	389.185	1966.810	113.471	2080.282
37th LVL	389.185	222.278	411.463	410.969	24.361	434.430	389.185	22.278	411.463	389.185	22.278	411.463	389.185	411.463	389.185	1966.810	113.471	2080.282
38th LVL	389.185	222.278	411.463	410.969	24.361	434.430	389.185	22.278	411.463	389.185	22.2							