

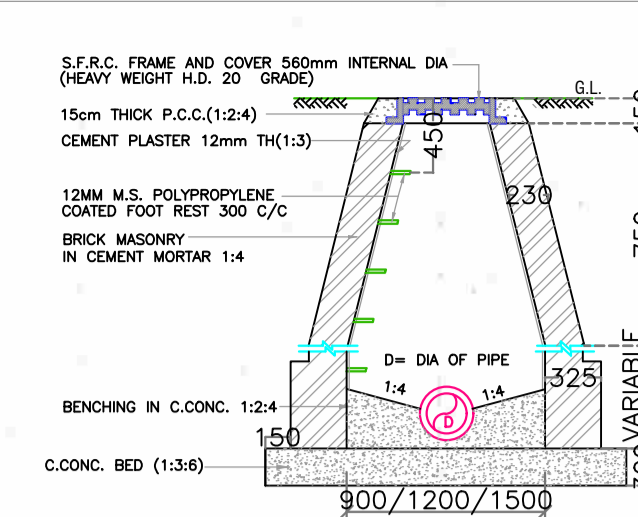
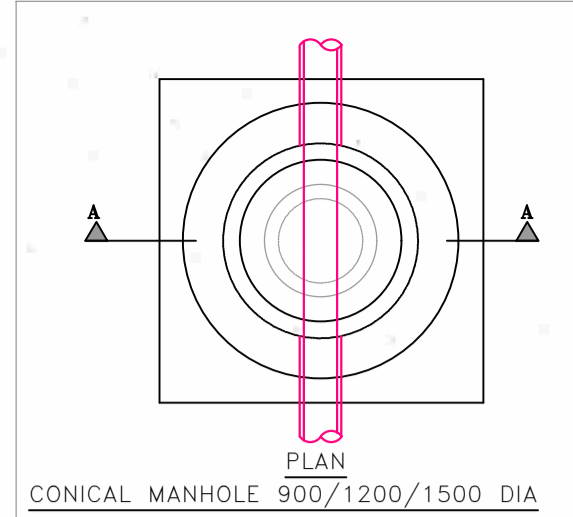
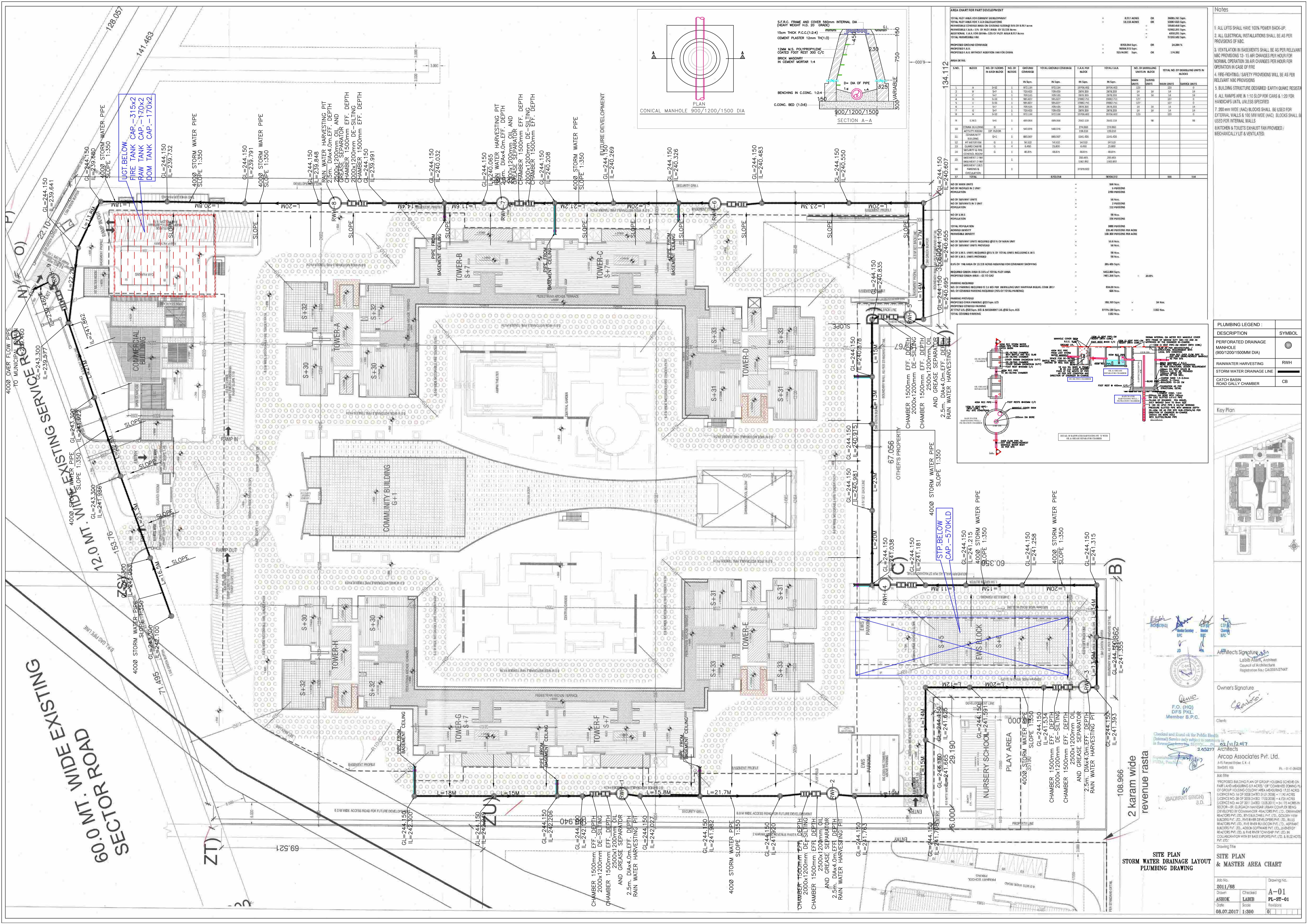
AREA CHART FOR PART DEVELOPMENT

TOTAL PLANT AREA FOR CURRENT DEVELOPMENT
 TOTAL PLANT AREA FOR AREA CALCULATION
 PERMISSIBLE COVERED AREA ON GROUND FLOOR (15% OF BALT) +
 PERMISSIBLE F.A. 1% OF FOOT AREA (1.3113 Acres)
 ADDITIONAL F.A. FOR DRIVE + 1% OF FOOT AREA (8.937 Acres)
TOTAL PERMISSIBLE F.A.

PROPOSED GROUND COVERAGE
 PROPOSED F.A. 3763.854 Sqm
 PROPOSED F.A. WITH/OUT ADDITIONAL F.A. FOR DRIVE 3960.375 Sqm
 EXISTING Sqm 174.264 sqm

AREA DETAIL

S.No.	BLOCK	NO OF FLOORS IN EACH BLOCK	NO OF BLOCKS	GROUND COVERAGE	TOTAL GROUND COVERAGE	F.A. PER BLOCK	TOTAL F.A.	NO OF DEPOSITING UNITS IN BLOCK	TOTAL NO. OF DEPOSITING UNITS IN BLOCKS
1	A	S+7	1	172.219	172.219	172.219	172.219	10	10
2	B	S+7	1	158.819	158.819	158.819	158.819	10	10
3	C	S+7	1	158.819	158.819	158.819	158.819	10	10
4	D	S+7	1	158.819	158.819	158.819	158.819	10	10
5	E	S+7	1	158.819	158.819	158.819	158.819	10	10
6	F	S+7	1	158.819	158.819	158.819	158.819	10	10
7	G	S+7	1	158.819	158.819	158.819	158.819	10	10
8	H	S+7	1	158.819	158.819	158.819	158.819	10	10
9	I	S+7	1	158.819	158.819	158.819	158.819	10	10
10	COMMUNITY BUILDING	G	1	142.074	142.074	142.074	142.074	10	10
11	COMMUNITY BUILDING	G	1	895.847	895.847	895.847	895.847	10	10
12	WATER TOWER	G	1	14.532	14.532	14.532	14.532	10	10
13	WATER TOWER	G	1	14.532	14.532	14.532	14.532	10	10
14	SECURITY & FIRE	G	1	48.875	48.875	48.875	48.875	10	10
15	SECURITY & FIRE	G	1	48.875	48.875	48.875	48.875	10	10
16	BASEMENT LAMP	G	1	48.875	48.875	48.875	48.875	10	10
17	BASEMENT LAMP	G	1	48.875	48.875	48.875	48.875	10	10
18	BASEMENT LAMP	G	1	48.875	48.875	48.875	48.875	10	10
19	BASEMENT LAMP	G	1	48.875	48.875	48.875	48.875	10	10
20	BASEMENT LAMP	G	1	48.875	48.875	48.875	48.875	10	10
21	BASEMENT LAMP	G	1	48.875	48.875	48.875	48.875	10	10
22	BASEMENT LAMP	G	1	48.875	48.875	48.875	48.875	10	10
23	BASEMENT LAMP	G	1	48.875	48.875	48.875	48.875	10	10
24	BASEMENT LAMP	G	1	48.875	48.875	48.875	48.875	10	10
25	BASEMENT LAMP	G	1	48.875	48.875	48.875	48.875	10	10
26	BASEMENT LAMP	G	1	48.875	48.875	48.875	48.875	10	10
27	BASEMENT LAMP	G	1	48.875	48.875	48.875	48.875	10	10
28	BASEMENT LAMP	G	1	48.875	48.875	48.875	48.875	10	10
29	BASEMENT LAMP	G	1	48.875	48.875	48.875	48.875	10	10
30	BASEMENT LAMP	G	1	48.875	48.875	48.875	48.875	10	10
31	BASEMENT LAMP	G	1	48.875	48.875	48.875	48.875	10	10
32	BASEMENT LAMP	G	1	48.875	48.875	48.875	48.875	10	10
33	BASEMENT LAMP	G	1	48.875	48.875	48.875	48.875	10	10
34	BASEMENT LAMP	G	1	48.875	48.875	48.875	48.875	10	10
35	BASEMENT LAMP	G	1	48.875	48.875	48.875	48.875	10	10
36	BASEMENT LAMP	G	1	48.875	48.875	48.875	48.875	10	10
37	BASEMENT LAMP	G	1	48.875	48.875	48.875	48.875	10	10
38	BASEMENT LAMP	G	1	48.875	48.875	48.875	48.875	10	10
39	BASEMENT LAMP	G	1	48.875	48.875	48.875	48.875	10	10
40	BASEMENT LAMP	G	1	48.875	48.875	48.875	48.875	10	10
41	BASEMENT LAMP	G	1	48.875	48.875	48.875	48.875	10	10
42	BASEMENT LAMP	G	1	48.875	48.875	48.875	48.875	10	10
43	BASEMENT LAMP	G	1	48.875	48.875	48.875	48.875	10	10
44	BASEMENT LAMP	G	1	48.875	48.875	48.875	48.875	10	10
45	BASEMENT LAMP	G	1	48.875	48.875	48.875	48.875	10	10
46	BASEMENT LAMP	G	1	48.875	48.875	48.875	48.875	10	10
47	BASEMENT LAMP	G	1	48.875	48.875	48.875	48.875	10	10
48	BASEMENT LAMP	G	1	48.875	48.875	48.875	48.875	10	10
49	BASEMENT LAMP	G	1	48.875	48.875	48.875	48.875	10	10
50	BASEMENT LAMP	G	1	48.875	48.875	48.875	48.875	10	10
51	BASEMENT LAMP	G	1	48.875	48.875	48.875	48.875	10	10
52	BASEMENT LAMP	G	1	48.875	48.875	48.875	48.875	10	10
53	BASEMENT LAMP	G	1	48.875	48.875	48.875	48.875	10	10
54	BASEMENT LAMP	G	1	48.875	48.875	48.875	48.875	10	10
55	BASEMENT LAMP	G	1	48.875	48.875	48.875	48.875	10	10
56	BASEMENT LAMP	G	1	48.875	48.875	48.875	48.875	10	10
57	BASEMENT LAMP	G	1	48.875	48.875	48.875	48.875	10	10
58	BASEMENT LAMP	G	1	48.875	48.875	48.875	48.875	10	10
59	BASEMENT LAMP	G	1	48.875	48.875	48.875	48.875	10	10
60	BASEMENT LAMP	G	1	48.875	48.875	48.875	48.875	10	10
61	BASEMENT LAMP	G	1	48.875	48.875	48.875	48.875	10	10
62	BASEMENT LAMP	G	1	48.875	48.875	48.875	48.875	10	10
63	BASEMENT LAMP	G	1	48.875	48.875	48.875	48.875	10	10
64	BASEMENT LAMP	G	1	48.875	48.875	48.875	48.875	10	10
65	BASEMENT LAMP	G	1	48.875	48.875	48.875	48.875	10	10
66	BASEMENT LAMP	G	1	48.875	48.875	48.875	48.875	10	10
67	BASEMENT LAMP	G	1	48.875	48.875	48.875	48.875	10	10
68	BASEMENT LAMP	G	1	48.875	48.875	48.875	48.875	10	10
69	BASEMENT LAMP	G	1	48.875	48.875	48.875	48.875	10	10
70	BASEMENT LAMP	G	1	48.875	48.875	48.875	48.875	10	10
71	BASEMENT LAMP	G	1	48.875	48.875	48.875	48.875	10	10
72	BASEMENT LAMP	G	1	48.875	48.875	48.875	48.875	10	10
73	BASEMENT LAMP	G	1	48.875	48.875	48.875	48.875	10	10
74	BASEMENT LAMP	G	1	48.875	48.875	48.875	48.875	10	10
75	BASEMENT LAMP	G	1	48.875	48.875	48.875	48.875	10	10
76	BASEMENT LAMP	G	1	48.875	48.875	48.875	48.875	10	10
77	BASEMENT LAMP	G	1	48.875	48.875	48.875	48.875	10	10
78	BASEMENT LAMP	G	1	48.875	48.875	48.875	48.875	10	10
79	BASEMENT LAMP	G	1	48.875	48.875	48.875	48.875	10	10
80	BASEMENT LAMP	G	1	48.875	48.875	48.875	48.875	10	10
81	BASEMENT LAMP	G	1	48.875	48.875	48.875	48.875	10	10
82	BASEMENT LAMP	G	1	48.875	48.875	48.875	48.875	10	10
83	BASEMENT LAMP	G	1	48.875	48.875	48.875	48.875	10	10
84	BASEMENT LAMP	G	1	48.875	48.875	48.875	48.875	10	10
85	BASEMENT LAMP	G	1	48.875	48.875	48.875	48.875	10	10
86	BASEMENT LAMP	G	1	48.875	48.875	48.875	48.875	10	10
87	BASEMENT LAMP	G	1	48.875	48.875	48.875	48.875	10	10
88	BASEMENT LAMP	G	1	48.875	48.875	48.875	48.875	10	10
89	BASEMENT LAMP	G	1	48.875	48.875	48.875	48.875	10	10
90	BASEMENT LAMP	G	1	48.875	48.875	48.875	48.875	10	10
91	BASEMENT LAMP	G	1	48.875	48.875	48.875	48.875	10	10
92	BASEMENT LAMP	G	1	48.875	48.875	48.875	48.875	10	10
93	BASEMENT LAMP	G	1	48.875	48.875	48.875	48.875	10	10
94	BASEMENT LAMP	G	1	48.875	48.875	48.875	48.875	10	10
95	BASEMENT LAMP	G	1	48.875	48.875	48.875	48.875	10	10
96	BASEMENT LAMP	G	1	48.875	48.875	48.875	48.875	10	10
97	BASEMENT LAMP	G	1	48.875	48.875	48.875	48.875	10	10
98	BASEMENT LAMP	G	1	48.875	48.875	48.875	48.875	10	10
99	BASEMENT LAMP	G	1	48.875	48.875	48.875	48.875	10	10
100	BASEMENT LAMP	G	1	48.875	48.875	48.875	48.875	10	10
101	BASEMENT LAMP	G	1	48.875	48.875	48.875	48.875	10	10
102	BASEMENT LAMP	G	1	48.875	48.875	48.875	48.875	10	10
103	BASEMENT LAMP	G	1	48.875	48.875	48.875	48.875	10	10
104	BASEMENT LAMP	G	1	48.875	48.875	48.875	48.875	10	10
105	BASEMENT LAMP	G	1	48.875	48.875	48.875	48.875	10	10
106	BASEMENT LAMP	G	1	48.875	48.875	48.875	48.875	10	10
107	BASEMENT LAMP	G	1	48.875	48.875	48.875	48.875	10	10
108	BASEMENT LAMP	G	1	48.875	48.875	48.875	48.875	10	10
109	BASEMENT LAMP	G	1	48.875	48.875	48.875	48.875	10	10
110	BASEMENT LAMP	G	1	48.875	48.875	48.875	48.875	10	10
111	BASEMENT LAMP	G	1	48.875	48.875	48.875	48.875	10	10
112	BASEMENT LAMP	G	1	48.875	48.875	48.875	48.875	10	10
113	BASEMENT LAMP	G	1	48.875	48.875	48.875	48.875	10	10
114	BASEMENT LAMP	G	1	48.875	48.875	48.875	48.875	10	10
115	BASEMENT LAMP	G	1	48.875	48.875	48.875	48.875	10	10



AREA CHART FOR PART DEVELOPMENT

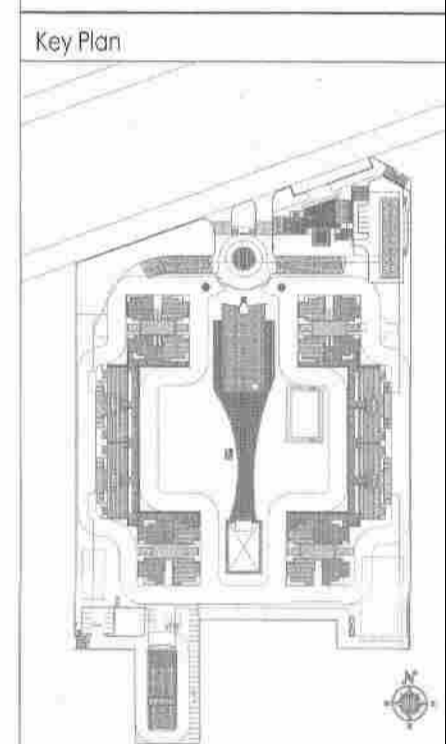
TOTAL PLOT AREA FOR CURRENT DEVELOPMENT: 13.118 ACRES
 TOTAL PLOT AREA FOR FUTURE DEVELOPMENT: 13.118 ACRES
 TOTAL PLOT AREA: 26.236 ACRES

S.NO.	BLOCK	NO. OF FLOORS	NO. OF UNITS	GROUND COVERAGE	TOTAL GROUND COVERAGE	TOTAL AREA	NO. OF DWELLING UNITS PER BLOCK	TOTAL NO. OF DWELLING UNITS IN BLOCKS
1	A	S+2	1	972.124	972.124	2706.462	123	123
2	B	S+2	1	972.124	972.124	2706.462	123	123
3	C	S+2	1	972.124	972.124	2706.462	123	123
4	D	S+2	1	972.124	972.124	2706.462	123	123
5	E	S+2	1	972.124	972.124	2706.462	123	123
6	F	S+2	1	972.124	972.124	2706.462	123	123
7	COMM. BUILDING	1ST FLOOR	1	543.076	543.076	1629.228	1	1
8	ACTIVITY ROOM	1ST FLOOR	1	543.076	543.076	1629.228	1	1
9	COMMUNITY BUILDING	1ST FLOOR	1	543.076	543.076	1629.228	1	1
10	MT. WATERSIDE	G	1	543.076	543.076	1629.228	1	1
11	SECURITY FIRE	G	1	543.076	543.076	1629.228	1	1
12	SECURITY FIRE	G	1	543.076	543.076	1629.228	1	1
13	SECURITY FIRE	G	1	543.076	543.076	1629.228	1	1
14	SECURITY FIRE	G	1	543.076	543.076	1629.228	1	1
15	SECURITY FIRE	G	1	543.076	543.076	1629.228	1	1
16	SECURITY FIRE	G	1	543.076	543.076	1629.228	1	1
17	SECURITY FIRE	G	1	543.076	543.076	1629.228	1	1
18	SECURITY FIRE	G	1	543.076	543.076	1629.228	1	1
19	SECURITY FIRE	G	1	543.076	543.076	1629.228	1	1
20	SECURITY FIRE	G	1	543.076	543.076	1629.228	1	1
21	SECURITY FIRE	G	1	543.076	543.076	1629.228	1	1
22	SECURITY FIRE	G	1	543.076	543.076	1629.228	1	1
23	SECURITY FIRE	G	1	543.076	543.076	1629.228	1	1
24	SECURITY FIRE	G	1	543.076	543.076	1629.228	1	1
25	SECURITY FIRE	G	1	543.076	543.076	1629.228	1	1
26	SECURITY FIRE	G	1	543.076	543.076	1629.228	1	1
27	SECURITY FIRE	G	1	543.076	543.076	1629.228	1	1
28	SECURITY FIRE	G	1	543.076	543.076	1629.228	1	1
29	SECURITY FIRE	G	1	543.076	543.076	1629.228	1	1
30	SECURITY FIRE	G	1	543.076	543.076	1629.228	1	1
31	SECURITY FIRE	G	1	543.076	543.076	1629.228	1	1
32	SECURITY FIRE	G	1	543.076	543.076	1629.228	1	1
33	SECURITY FIRE	G	1	543.076	543.076	1629.228	1	1
34	SECURITY FIRE	G	1	543.076	543.076	1629.228	1	1
35	SECURITY FIRE	G	1	543.076	543.076	1629.228	1	1
36	SECURITY FIRE	G	1	543.076	543.076	1629.228	1	1
37	SECURITY FIRE	G	1	543.076	543.076	1629.228	1	1
38	SECURITY FIRE	G	1	543.076	543.076	1629.228	1	1
39	SECURITY FIRE	G	1	543.076	543.076	1629.228	1	1
40	SECURITY FIRE	G	1	543.076	543.076	1629.228	1	1
41	SECURITY FIRE	G	1	543.076	543.076	1629.228	1	1
42	SECURITY FIRE	G	1	543.076	543.076	1629.228	1	1
43	SECURITY FIRE	G	1	543.076	543.076	1629.228	1	1
44	SECURITY FIRE	G	1	543.076	543.076	1629.228	1	1
45	SECURITY FIRE	G	1	543.076	543.076	1629.228	1	1
46	SECURITY FIRE	G	1	543.076	543.076	1629.228	1	1
47	SECURITY FIRE	G	1	543.076	543.076	1629.228	1	1
48	SECURITY FIRE	G	1	543.076	543.076	1629.228	1	1
49	SECURITY FIRE	G	1	543.076	543.076	1629.228	1	1
50	SECURITY FIRE	G	1	543.076	543.076	1629.228	1	1

- Notes**
- ALL LIFTS SHALL HAVE 100% POWER BACK-UP.
 - ALL ELECTRICAL INSTALLATIONS SHALL BE AS PER PROVISIONS OF NBC.
 - VENTILATION IN BASEMENTS SHALL BE AS PER RELEVANT NBC PROVISIONS 12-15 AND CHANGES PER HOUR FOR NORMAL OPERATION 30 AIR CHANGES PER HOUR FOR OPERATION IN CASE OF FIRE.
 - FIRE-FIGHTING / SAFETY PROVISIONS WILL BE AS PER RELEVANT NBC PROVISIONS.
 - BUILDING STRUCTURE DESIGNED EARTH QUAKE RESISTANT.
 - ALL RAMP ARE IN 1:10 SLOPE FOR CARS & 1:20 FOR HANDICAPPED UNITS, UNLESS SPECIFIED.
 - 7.200 mm WIDE (AAC) BLOCKS SHALL BE USED FOR EXTERNAL WALLS & 100 MM WIDE (AAC) BLOCKS SHALL BE USED FOR INTERNAL WALLS.
 - KITCHEN & TOILETS EXHAUST FAN PROVIDED / MECHANICALLY LIT & VENTILATED.

PLUMBING LEGEND :

DESCRIPTION	SYMBOL
PERFORATED DRAINAGE MANHOLE (900/1200/1500MM DIA)	
RAINWATER HARVESTING	RWH
STORM WATER DRAINAGE LINE	
CATCH BASIN	CB
ROAD GULLY CHAMBER	



Architects Signature
 Labib Alam, Architect
 Council of Architects Registration No: CA/200127447

Owner's Signature
 F.O. (HO) DFS PKL Member B.P.C.

Client: Arco Associates Pvt. Ltd.
 1st Floor, Block G-4, Ph-19, 1134029

Job Title: PROPOSED BUILDING PLAN OF GROUP HOUSING SCHEME ON PART AND ADJOINING 57 ACRES OF COMBINED ZONING PL. OF GROUP HOUSING COLONY AREA MEASURING 17.56 ACRES (LICENCE NO. 14 OF 2008 DATED 31.01.2008) + 1.70 ACRES (LICENCE NO. 14 OF 2008 DATED 11.02.2008) + 1.70 ACRES (LICENCE NO. 14 OF 2001 DATED 10.05.2001) + 5.72 ACRES IN SECTOR-09, GURGAON HANSAH URBAN CORP. BEING DEVELOPED BY CONANANSHAH REALTORS PVT. LTD., CONANSHAH REALTORS PVT. LTD., 3RD FLOOR, PVT. LTD., GOLDEN VIEW BUILDERS PVT. LTD., PINE RIDGE DEVELOPERS PVT. LTD., ADRIANT BUILDERS PVT. LTD., AADSH SOFTWARE PVT. LTD., ENERGY REALTORS PVT. LTD., THE RIVER TOWNSHIP PVT. LTD. IN COLLABORATION WITH BYE ESTEES PVT. LTD. & BUZZ HOTEL PVT. LTD.

Date: 02/11/2017
Scale: 1:300

Job No.: 2011/08
Drawn: ASHOK
Checked: LABIB
Date: 08.07.2017

Drawing No.: A-01
PL-ST-01

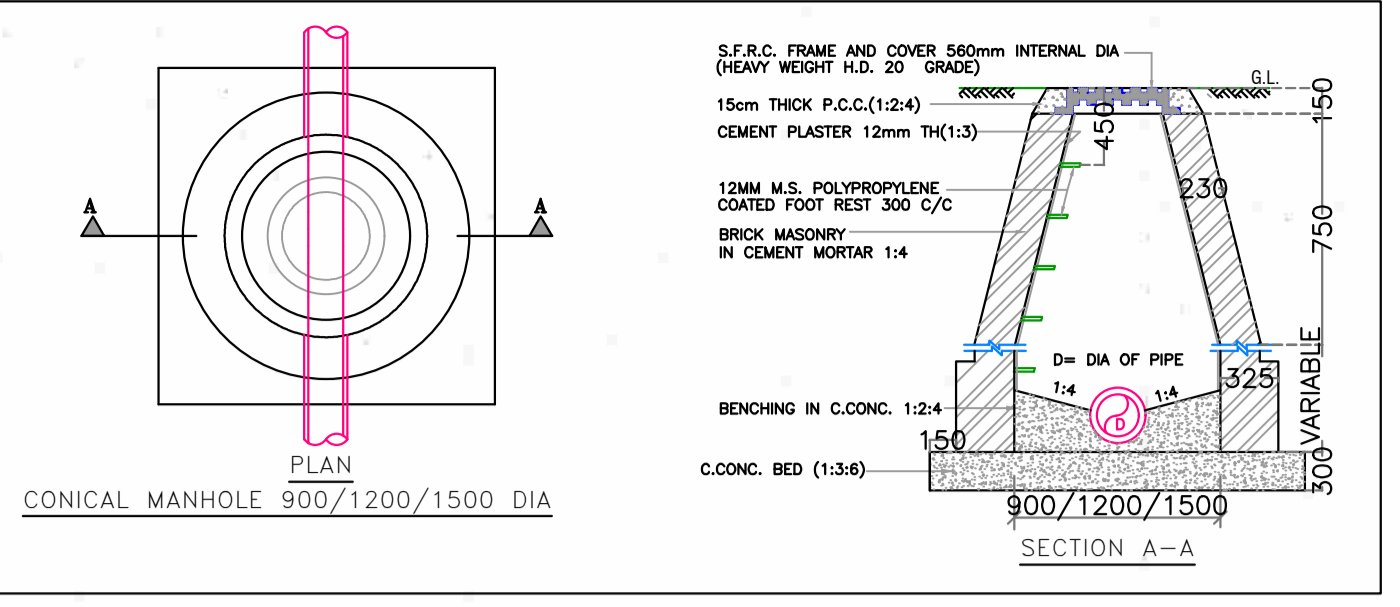
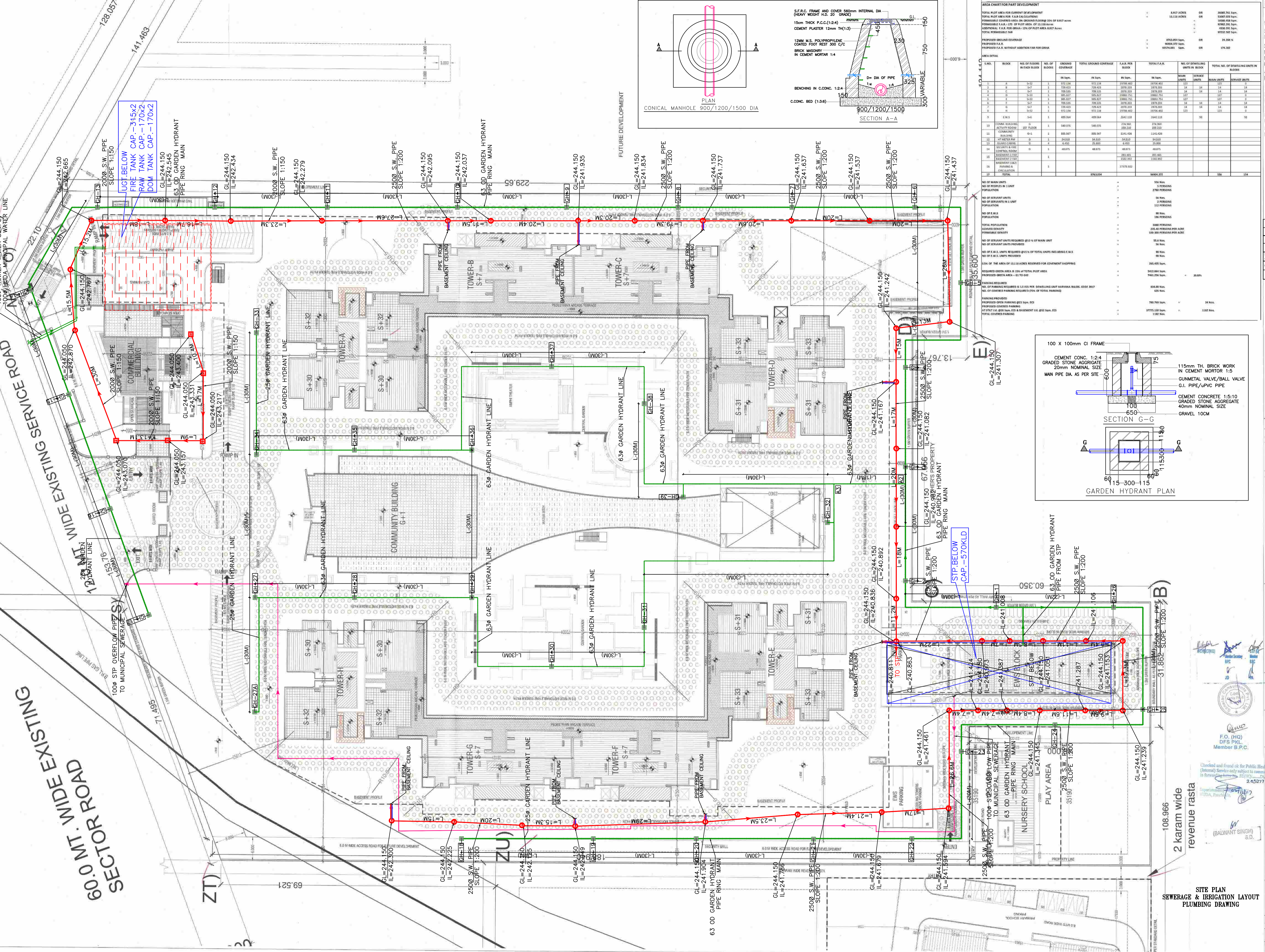
60.0 MT. WIDE EXISTING SECTOR ROAD

12.0 MT. WIDE EXISTING SERVICE ROAD

128.057, 141.463

2 karam wide revenue rasta

SITE PLAN STORM WATER DRAINAGE LAYOUT PLUMBING DRAWING



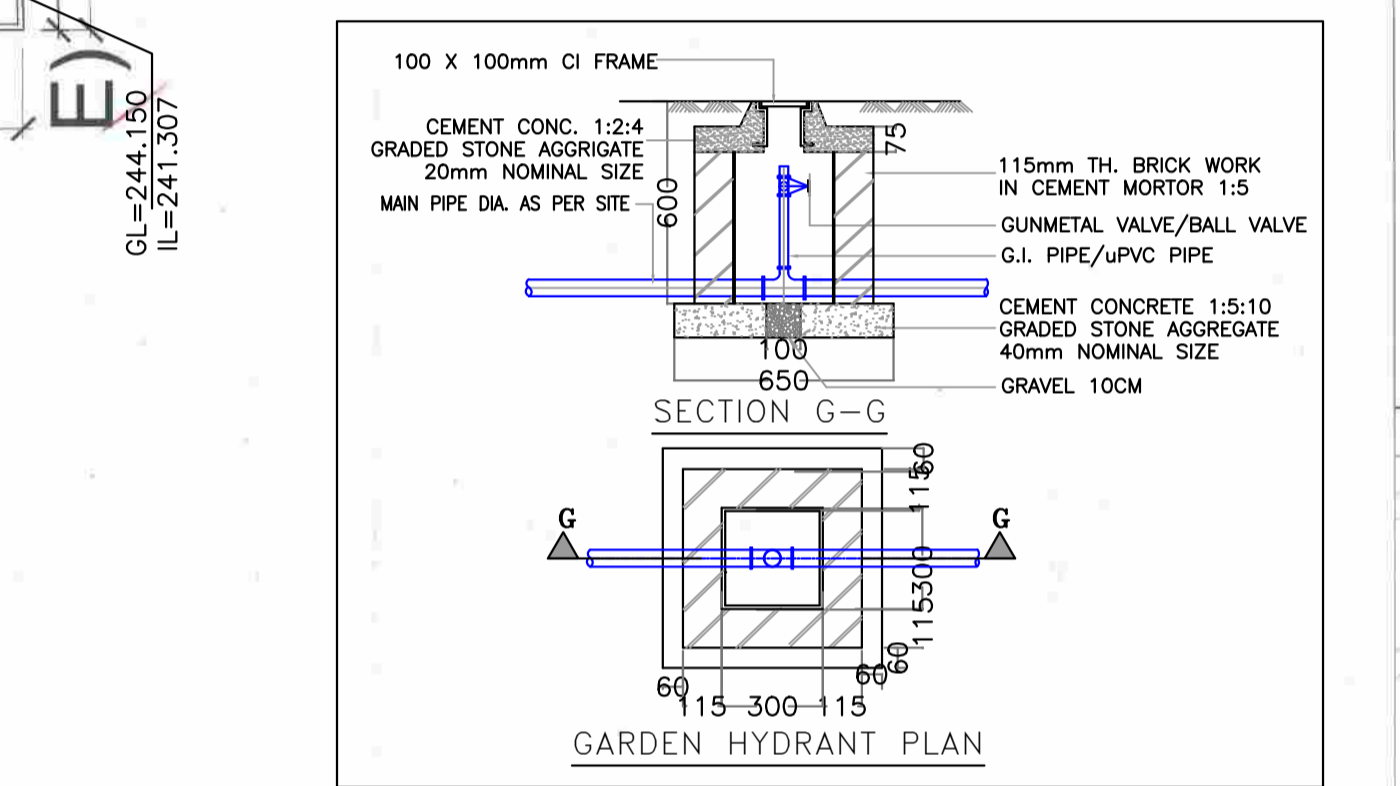
AREA CHART FOR PART DEVELOPMENT

SL.NO.	BLOCK	NO. OF FLOORS IN EACH BLOCK	NO. OF BLOCKS	GROUND COVERAGE		TOTAL F.A.R.		NO. OF DWELLING UNITS IN BLOCK	TOTAL NO. OF DWELLING UNITS
				Sq. M.	%	Sq. M.	NO.		
1	A	5	1	972.134	10.00	1576.422	1270.452	13	13
2	B	5	1	729.432	10.00	1199.432	1079.432	14	14
3	C	5	1	709.150	10.00	1079.150	979.150	14	14
4	D	5	1	995.217	10.00	1492.717	1342.717	14	14
5	E	5	1	709.150	10.00	1079.150	979.150	14	14
6	F	5	1	709.150	10.00	1079.150	979.150	14	14
7	G	5	1	729.432	10.00	1199.432	1079.432	14	14
8	H	5	1	972.134	10.00	1472.134	1322.134	13	13
9	E.W.S.			546		409.04	2042.139	19	19
10	TOTAL DEVELOPMENT					11407.856	10000.00	132	132

SL.NO.	BLOCK	NO. OF PEOPLE IN 1 UNIT	NO. OF SEWERS IN UNIT	NO. OF SEWERS PER UNIT	TOTAL POPULATION	TOTAL F.A.R. PROVIDED	TOTAL F.A.R. REQUIRED @ 1.5 F.A.R. PER UNIT	TOTAL F.A.R. PROVIDED	TOTAL F.A.R. REQUIRED @ 1.5 F.A.R. PER UNIT
1	A	5	1	1	5	15.76422	7.88211	15.76422	7.88211
2	B	5	1	1	5	11.99432	5.99716	11.99432	5.99716
3	C	5	1	1	5	10.79150	5.39575	10.79150	5.39575
4	D	5	1	1	5	14.92717	7.46358	14.92717	7.46358
5	E	5	1	1	5	10.79150	5.39575	10.79150	5.39575
6	F	5	1	1	5	10.79150	5.39575	10.79150	5.39575
7	G	5	1	1	5	11.99432	5.99716	11.99432	5.99716
8	H	5	1	1	5	14.72134	7.36067	14.72134	7.36067
9	TOTAL DEVELOPMENT				65	100.00	50.00	100.00	50.00

PLUMBING LEGEND

DESCRIPTION	SYMBOL
GARDEN HYDRANT LINE	
GARDEN HYDRANT (300x300mm)	
SEWERAGE MANHOLE (900/1200/1500 DIA)	
100x200x200mm SEWERAGE MANHOLE	
SEWERAGE LINE	



Notes

- ALL LIFTS SHALL HAVE 100% POWER BACK-UP.
- ALL ELECTRICAL INSTALLATIONS SHALL BE AS PER PROVISIONS OF NBC.
- VENTILATION IN BASEMENTS SHALL BE AS PER RELEVANT NBC PROVISIONS 12-15 AIR CHANGES PER HOUR FOR NORMAL OPERATION 30 AIR CHANGES PER HOUR FOR OPERATION IN CASE OF FIRE.
- FIRE-FIGHTING SAFETY PROVISIONS WILL BE AS PER RELEVANT NBC PROVISIONS.
- BUILDING STRUCTURE DESIGNED EARTH QUAKE RESIST.
- ALL RAMPS ARE IN 1:10 SLOPE FOR CARS & 1:20 FOR HANDICAPPED UNITS UNLESS SPECIFIED.
- 200mm WIDE (AAC) BLOCKS SHALL BE USED FOR EXTERNAL WALLS & 100mm WIDE (AAC) BLOCKS SHALL BE USED FOR INTERNAL WALLS.
- KITCHEN & TOILETS EXHAUST FAN PROVIDED / MECHANICALLY LIT & VENTILATED.

Architect's Signature: Labib Albert, Architect
 Council of Architecture
 Registration No.: CA2081927447

Owner's Signature: [Signature]

Checked and found ok for Public Health (Internal) Service only subject to compliance in Forestry Service under 2.05277 Architects

Checked and found ok for Fire Health (Internal) Service only subject to compliance in Forestry Service under 2.05277 Architects

Architects: Arcop Associates Pvt. Ltd.
 A-13, Porvur Farm, S.K-1
 Tollygunge, Kolkata

Drawing File: 02/11/2017

Job Title: PROPOSED BUILDING PLAN OF GROUP HOUSING SCHEME ON PART LAND MEASURING 87 ACRES OF COMBINED ZONING OF GROUP HOUSING COLONY AREA MEASURING 17.85 ACRES LICENCE NO. LV-08-2008-DATED 31/07/2008 - 11.86 ACRES LICENCE NO. 28 OF 2008-DATED 17/02/2008 - 4.75 ACRES LICENCE NO. 44 OF 2011-DATED 13/03/2011 - 24.75 ACRES LICENCE NO. 59-GARDEN HANSAAR URAM COVER BEING DEVELOPED BY COMMANDEER REALTORS PVT. LTD., ORANAB REALTORS PVT. LTD., RIVE EVER DEVELOPERS PVT. LTD., GOLDEN VIEW BUILDERS PVT. LTD., FIVE EVER DEVELOPERS PVT. LTD., ABUS REALTORS PVT. LTD., FIVE EVER BUILDING PVT. LTD., APPRANT BUILDERS PVT. LTD., ACORN SOFTWARE PVT. LTD., ENERGY REALTORS PVT. LTD. & FIVE EVER TOWNSHIP PVT. LTD. IN COLLABORATION WITH VILAS EXPORTS PVT. LTD. & BLIZZHOT PVT. LTD.

Scale: 1:300
Drawing No.: A-01
Sheet: ASBK
Checked: LARB
Date: 08.07.2017