

50.371% PLOT FROZEN BY DEPARTMENT AREA
11562.187 SQ.MTS / 2.857 ACRES

11.9778 ACRES	PERMISSIBLE			PROPOSED		
	AREA ACRES	AREA SQ.MTS.	PERCENTAGE %	AREA ACRES	AREA SQ.MTS.	PERCENTAGE %
TOTAL Licence Area	11.9778	48472.271				
Open Area under GREEN/PARK	0.898	3635.420	7.50	1.243	5030.390	10.38
Community Facilities	1.198	4847.227	10.00	1.199	4852.770	10.01
Commercial Area (calculated on Licence Area)	0.479	1938.891	4.00	0.480	1943.460	4.01
Area Under Plots (calculated on Licence Area)	7.306	29568.085	61.00	5.672	22953.931	47.35
Total permissible Residential + Commercial area	7.786	31506.976	65.00	6.152	24897.391	51.36
Permissible Density	240-400 ppa		Minimum Required Plots	159.70		
Achieved Density @ 18 persons per Plot	314.08 ppa		Achieved Plots	209.000		

DTP
P.A.K.
4-D
A-D
Fi

S.NO	L(MT)	B(MT)	AREA (SQMT)
1	20.1	24.02	482.80
2	11.75	20.94	243.02
3	21.96	8.62	189.30
4	12.32	21.96	271.57
5	51.2	28.71	1470.27
TOTAL AREA IN SQMT			1665.37

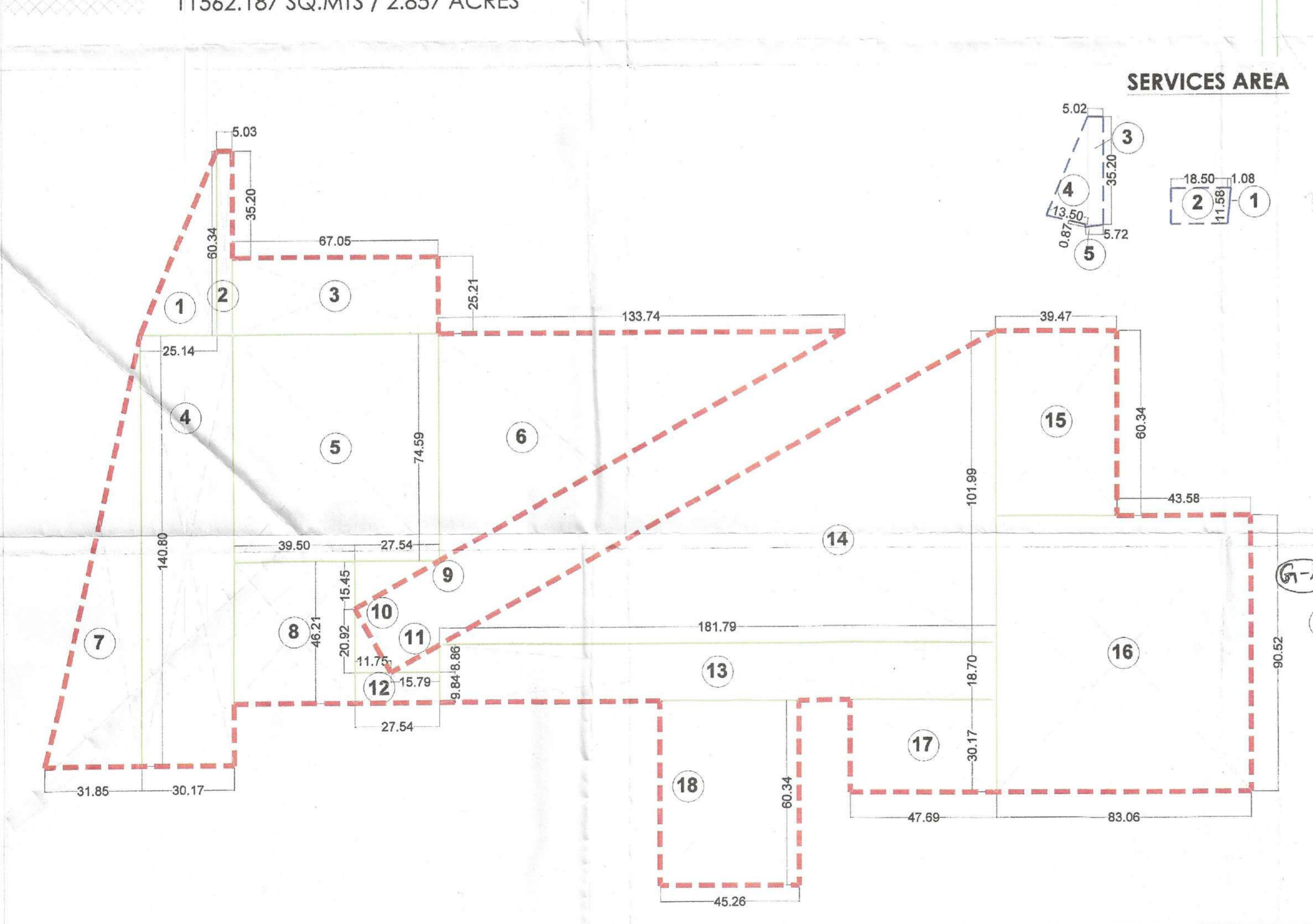
S.NO	L(MT)	B(MT)	AREA (SQMT)
1	55	49.49	2743.65
2	49.49	10.45	517.17
3	18.42	2.81	51.76
4	10.47	2.59	27.11
TOTAL AREA IN SQMT			1943.46

S.NO	L(MT)	B1(MT)	B2(MT)	AREA (SQMT)
1	35.37	22.73		803.96
2	35.37	3.28		116.02
3	35.37	3.29		116.11
4	46.15	4.3		198.65
5	46.15	30.86		1424.19
6	46.15	4.3		198.65
7	55.69	31.28		1741.99
8	27.88	31.28		872.04
9	41.82	1.22		51.02
10	18.76	5.55	9.06	137.04
11	18.3	4.05		74.42
12	6.78	5.9		40.00
13	44.02	24.69		1086.49
14	19.6	15.11		296.06
15	19.6	10.99		215.00
16	24.11	2.27		54.73
TOTAL AREA IN SQMT				5930.39

S.NO	L(MT)	B(MT)	AREA (SQMT)
1	90.52	21.82	1975.15
2	90.52	8.42	762.20
3	46.18	4.27	197.18
4	26.28	15.8	415.22
5	65.35	30.34	1982.72
TOTAL AREA IN SQMT			4852.77

S.NO	L(MT)	B(MT)	AREA (SQMT)
1	11.58	1.08	12.50
2	18.5	11.58	213.23
3	35.2	5.02	176.70
4	13.5	35.2	475.16
5	5.72	0.87	4.98
TOTAL AREA IN SQMT			637.28

S.NO	L(MT)	B(MT)	AREA (SQMT)
1	60.34	25.14	1517.18
2	5.03	60.34	303.51
3	67.05	25.21	1690.33
4	30.17	140.87	4250.05
5	66.99	74.59	4996.85
6	133.74	74.59	9954.92
7	31.85	140.87	4484.35
8	39.50	46.21	1825.30
9	27.54	15.45	423.75
10	20.92	11.75	245.78
11	15.79	8.86	139.91
12	27.54	9.84	270.99
13	181.79	18.70	3409.47
14	181.79	101.99	18520.38
15	39.47	60.34	2381.62
16	83.06	90.52	7518.59
17	47.69	30.17	1438.81
18	45.26	60.34	2730.99
TOTAL AREA IN SQMT			48472.271
TOTAL AREA IN ACRES			11.9778



TYPE	SIZE OF PLOT (M)	AREA OF PLOT (SQ.M)	NO. OF PLOTS	TOTAL AREA (SQ.M)
A	6.4 X 18.32	117.248	48	5627.904
B	6.4 X 15.80	101.120	14	1415.680
C	6.4 X 18.13	116.032	18	2088.576
M1		111.477	1	111.477
M2		101.493	1	101.493
M3		113.600	1	113.600
M4		106.370	1	106.370
M5		99.136	1	99.136
M6		91.840	1	91.840
M7		84.704	1	84.704
M8		94.165	1	94.165
M9		113.991	1	113.991
M10		93.536	1	93.536
M11		118.144	1	118.144
M12		87.895	1	87.895
M13		67.345	1	67.345
M14		75.296	1	75.296
M15		89.824	1	89.824
M16		92.880	1	92.880
M17		92.880	1	92.880
M18		92.880	1	92.880
M19		92.880	1	92.880
M20		91.706	1	91.706
M21		99.145	1	99.145
M22		147.130	1	147.130
M23		144.000	1	144.000
M24		127.710	1	127.710
TOTAL			104	11562.187

S.NO	TYPE	B	B1	L	L1	AREA	NOS	TOTAL AREA	CELL FORMULA
1	A	6.40		18.32		117.248	48	11724.80	LXB
2	B	6.40		15.80		101.120	14	1415.680	LXB
3	C	6.40		18.13		116.032	18	2088.576	LXB
4	M1	6.40	8.11	18.32		111.477	1	111.477	(L+L1)/B/2
5	M2	6.40	7.57	18.32		101.493	1	101.493	(L+L1)/B/2
6	M3	6.40		18.32	17.18	113.600	1	113.600	(L+L1)/B/2
7	M4	6.40		18.32	16.08	106.370	1	106.370	(L+L1)/B/2
8	M5	6.40		18.32	14.92	99.136	1	99.136	(L+L1)/B/2
9	M6	6.40		18.32	13.78	91.840	1	91.840	(L+L1)/B/2
10	M7	6.40		18.32	12.69	84.704	1	84.704	(L+L1)/B/2
11	M8	6.40		18.32	11.58	76.224	1	76.224	(L+L1)/B/2
12	M9	6.40		18.32	10.47	67.344	1	67.344	(L+L1)/B/2
13	M10	6.40		18.32	9.36	58.352	1	58.352	(L+L1)/B/2
14	M11	6.40		18.32	8.25	49.360	1	49.360	(L+L1)/B/2
15	M12	6.40		18.32	7.14	40.368	1	40.368	(L+L1)/B/2
16	M13	6.40		18.32	6.03	31.376	1	31.376	(L+L1)/B/2
17	M14	6.40		18.32	4.92	22.384	1	22.384	(L+L1)/B/2
18	M15	6.40		18.32	3.81	13.392	1	13.392	(L+L1)/B/2
19	M16	6.40		18.32	2.70	4.399	1	4.399	(L+L1)/B/2
20	M17	6.40		18.32	1.59	-4.604	1	-4.604	(L+L1)/B/2
21	M18	6.40		18.32	0.48	-15.611	1	-15.611	(L+L1)/B/2
22	M19	6.40		18.32	-0.63	-26.618	1	-26.618	(L+L1)/B/2
23	M20	6.40		18.32	-1.74	-37.625	1	-37.625	(L+L1)/B/2
24	M21	6.40		18.32	-2.85	-48.632	1	-48.632	(L+L1)/B/2
25	M22	6.40		18.32	-3.96	-59.639	1	-59.639	(L+L1)/B/2
26	M23	6.40		18.32	-5.07	-70.646	1	-70.646	(L+L1)/B/2
27	M24	6.40		18.32	-6.18	-81.653	1	-81.653	(L+L1)/B/2
TOTAL							104	11562.187	

PROJECT NAME AND ADDRESS:
DEMARCATION
PLAN OF PROPOSED RESIDENTIAL PLOTTED COLONY UNDER DDJAY, IN SECTOR-81, GURGAON, OVER AN AREA OF 11.9778 ACRES BEING DEVELOPED BY LOGICAL DEVELOPERS PVT. LTD. AND OTHERS IN COLLABORATION WITH EMAAR PVT. LTD.

OWNER'S NAME:
LOGICAL DEVELOPERS PVT. LTD. AND OTHERS IN COLLABORATION WITH EMAAR PVT. LTD.

DRAWING TITLE:
DEMARCATION PLAN

OWNER'S SIGNATURE:
[Signature]