

| 10.30 ACRES | PERMISSIBLE | | | PROPOSED | | |
|--|-------------|-----------|------------------------|----------|-----------|------------|
| | AREA | AREA | PERCENTAGE | AREA | AREA | PERCENTAGE |
| | ACRES | SQ.MTS. | % | ACRES | SQ.MTS. | % |
| Total Licenced Area | 10.300 | 41682.555 | | | | |
| Area falling under 24.0M wide Road | 0.790 | 3197.012 | | | | |
| Balance Area | 9.510 | 38485.544 | | | | |
| Open Area under Green/Park | 0.773 | 3126.192 | 7.50 | 0.782 | 3163.630 | 7.59 |
| Community Facilities | 1.030 | 4168.256 | 10.00 | 1.030 | 4168.398 | 10.00 |
| Commercial Area (Calculated on total Plot area) | 0.412 | 1667.302 | 4.00 | 0.412 | 1667.302 | 4.00 |
| Area Under Plots (Calculated on total Plot area) | 6.283 | 25426.359 | 61.00 | 4.964 | 20086.572 | 48.19 |
| Total permissible Residential + Commercial area | 6.695 | 27093.661 | 65.00 | 5.376 | 21753.874 | 52.19 |
| Permissible Density | 240-400 ppa | | Minimum Required Plots | 137.33 | | |
| Achieved Density | 333.79 | ppa | Achieved Plots | 191.000 | | |

| LAND AREA CALCULATION | | | | | | |
|-----------------------|------------|-------------|------------------|-------|---------|--|
| S.NO. | LENGTH (M) | BREADTH (M) | AREA (SQ.M.) | CAL. | FORMULA | |
| 1 | 67.056 | 15.000 | 1005.840 | LXB/2 | | |
| 2 | 67.056 | 15.000 | 1005.840 | LXB/2 | | |
| 3 | 15.087 | 40.230 | 607.071 | LXB/2 | | |
| 4 | 26.826 | 61.022 | 1637.888 | LXB/2 | | |
| 5 | 82.026 | 28.727 | 2356.910 | LXB/2 | | |
| 6 | 35.200 | 61.022 | 2147.987 | LXB/2 | | |
| 7 | 35.200 | 61.022 | 2147.987 | LXB/2 | | |
| 8 | 67.056 | 98.817 | 6625.431 | LXB/2 | | |
| 9 | 67.056 | 98.817 | 6625.431 | LXB/2 | | |
| 10 | 67.056 | 33.818 | 2268.850 | LXB/2 | | |
| 11 | 67.056 | 31.854 | 2135.001 | LXB/2 | | |
| 12 | 67.056 | 45.288 | 3036.431 | LXB/2 | | |
| 13 | 67.056 | 45.288 | 3036.431 | LXB/2 | | |
| 14 | 67.056 | 60.350 | 4037.415 | LXB/2 | | |
| 15 | 67.056 | 60.350 | 4037.415 | LXB/2 | | |
| 16 | 67.056 | 35.205 | 2360.353 | LXB/2 | | |
| 17 | 67.056 | 35.205 | 2360.353 | LXB/2 | | |
| 18 | 15.000 | 25.148 | 377.220 | LXB/2 | | |
| 19 | 15.000 | 25.148 | 377.220 | LXB/2 | | |
| 20 | 25.148 | 21.790 | 547.066 | LXB/2 | | |
| 21 | 25.148 | 21.790 | 547.066 | LXB/2 | | |
| 22 | 67.056 | 31.982 | 2144.292 | LXB/2 | | |
| 23 | 67.056 | 31.982 | 2144.292 | LXB/2 | | |
| 24 | 33.528 | 30.177 | 1011.887 | LXB/2 | | |
| 25 | 33.528 | 30.177 | 1011.887 | LXB/2 | | |
| 26 | 33.528 | 67.550 | 2264.768 | LXB/2 | | |
| 27 | 33.528 | 67.550 | 2264.768 | LXB/2 | | |
| 28 | 67.056 | 67.550 | 4528.530 | LXB/2 | | |
| 29 | 67.056 | 67.550 | 4528.530 | LXB/2 | | |
| 30 | 24.300 | 24.300 | 591.240 | LXB/2 | | |
| 31 | 24.300 | 24.300 | 591.240 | LXB/2 | | |
| 32 | 62.020 | 60.383 | 3744.477 | LXB/2 | | |
| 33 | 62.020 | 60.383 | 3744.477 | LXB/2 | | |
| 34 | 67.056 | 60.350 | 4037.415 | LXB/2 | | |
| 35 | 67.056 | 60.350 | 4037.415 | LXB/2 | | |
| TOTAL | | | 41682.557 | | | |

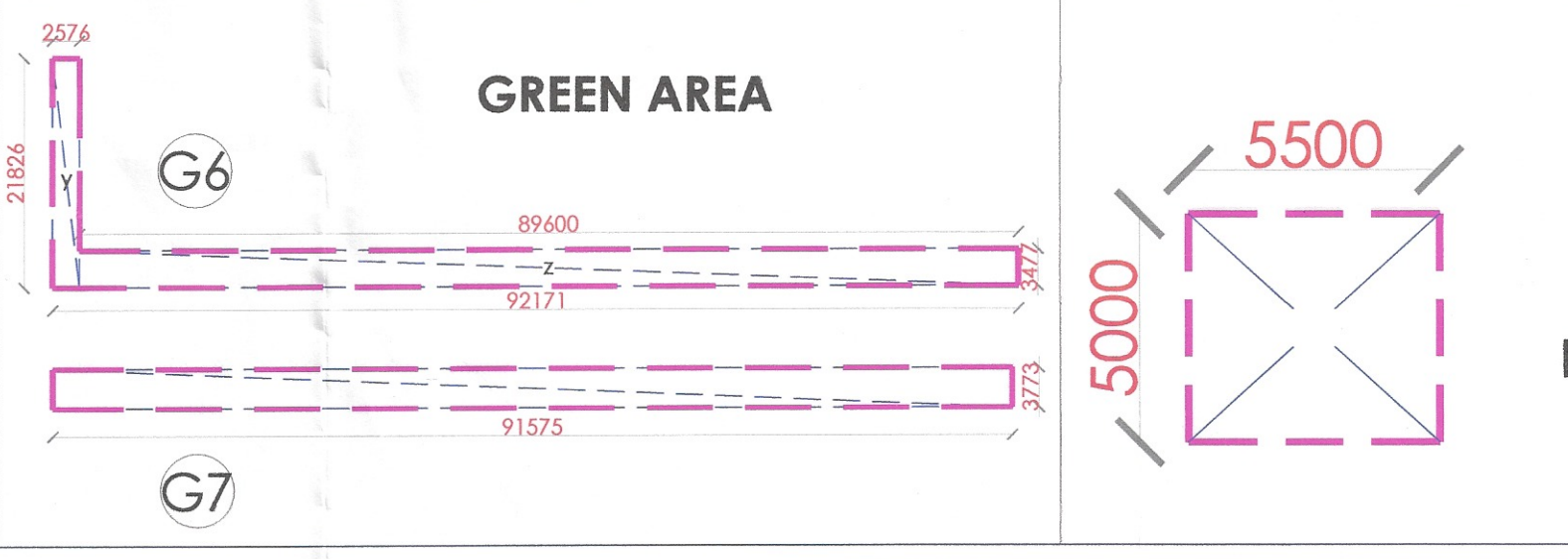
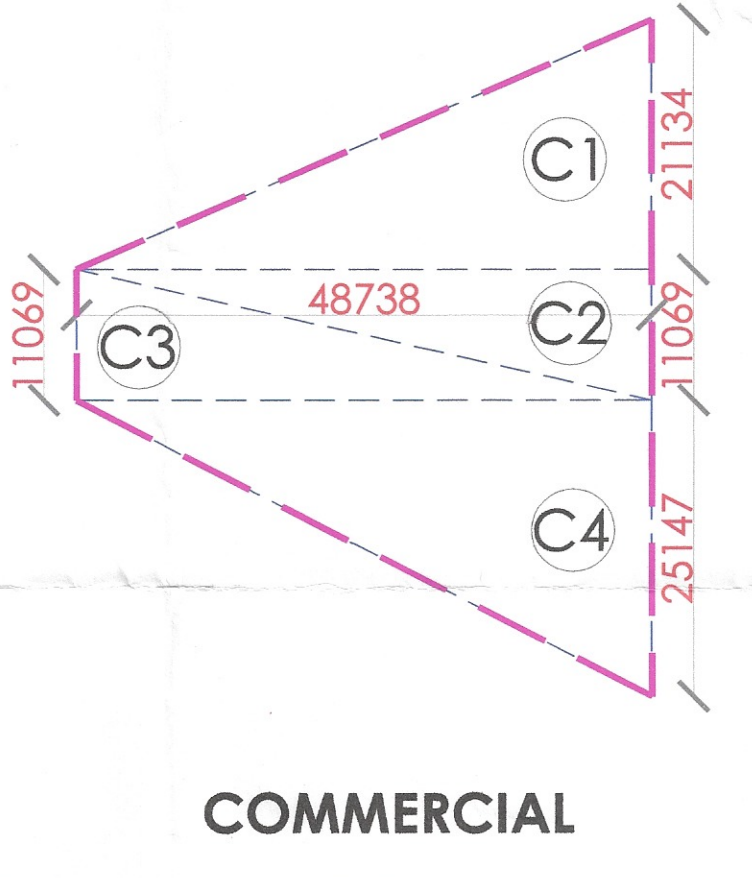
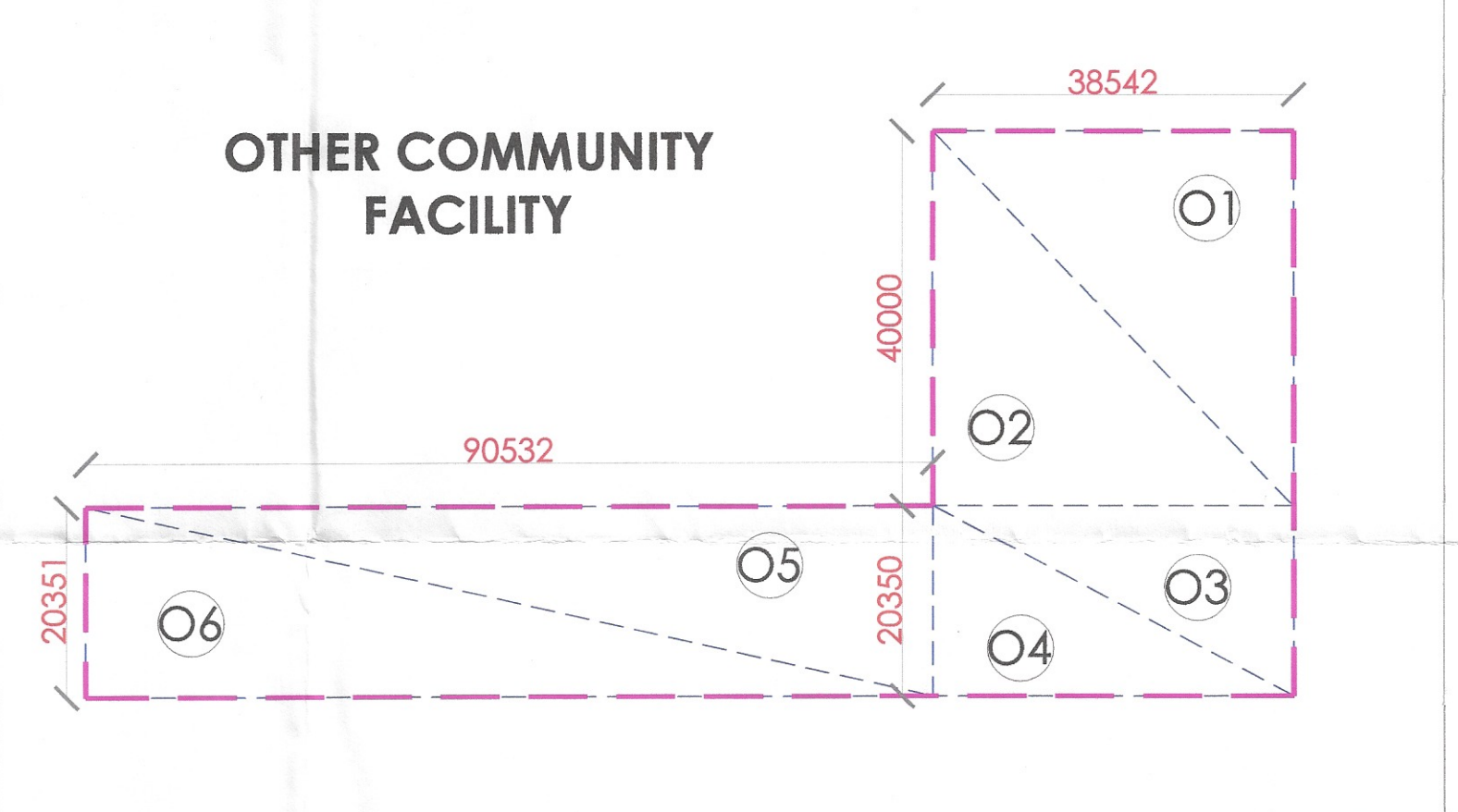
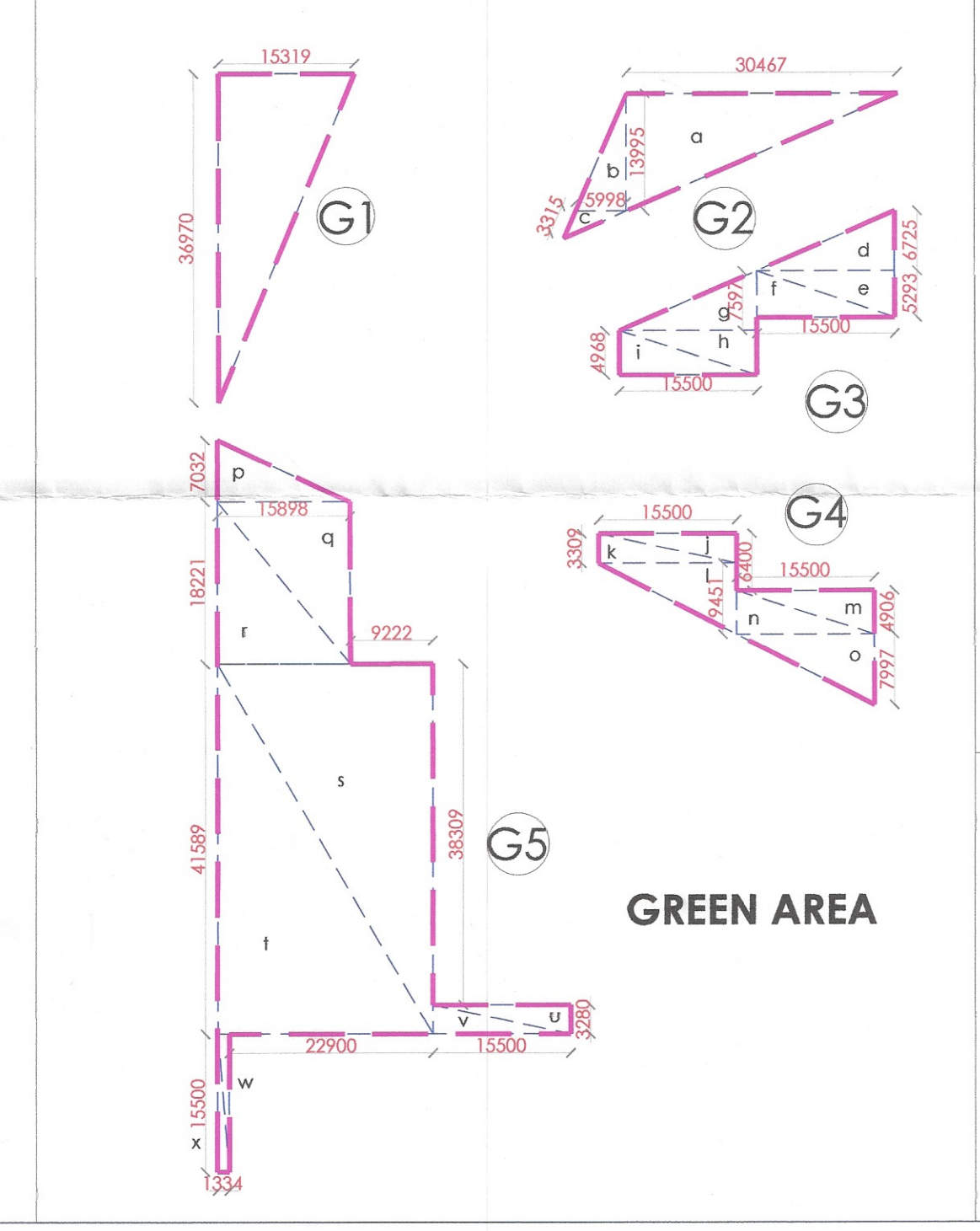
| CLASSIFICATION OF PLOTS | | | | |
|-------------------------|----------------|---------------|--------------|---------------------|
| TYPE | SIZE OF PLOTS | AREA OF PLOTS | NO. OF PLOTS | TOTAL AREA OF PLOTS |
| | MTS. | SQ.MTS. | | SQ.MTS. |
| A | 6.400 | 18.320 | 117.248 | 890.112 |
| B | 6.400 | 15.500 | 99.200 | 10316.800 |
| M1 | 5.030 | 15.500 | 77.965 | 77.965 |
| M2 | 5.030 | 15.500 | 77.965 | 77.965 |
| M3 | 5.030 | 15.500 | 77.965 | 77.965 |
| M4 | 5.030 | 15.500 | 77.965 | 77.965 |
| M5 | 5.030 | 15.500 | 77.965 | 77.965 |
| M6 | 5.030 | 15.500 | 77.965 | 77.965 |
| M7 | Irregular Plot | 70.172 | 1 | 70.172 |
| M8 | Irregular Plot | 79.497 | 1 | 79.497 |
| M9 | Irregular Plot | 95.786 | 1 | 95.786 |
| M10 | Irregular Plot | 95.586 | 1 | 95.586 |
| M11 | Irregular Plot | 148.036 | 1 | 148.036 |
| M12 | Irregular Plot | 126.882 | 1 | 126.882 |
| M13 | 6.970 | 14.832 | 103.379 | 103.379 |
| M14 | 6.970 | 14.832 | 103.379 | 103.379 |
| M15 | 6.970 | 14.832 | 103.379 | 103.379 |
| M16 | 5.542 | 15.500 | 85.901 | 85.901 |
| M17 | 5.542 | 15.500 | 85.901 | 85.901 |
| M18 | 7.353 | 15.500 | 113.972 | 113.972 |
| TOTAL | | | 191 | 20086.572 |

| CLASSIFICATION OF FROZEN PLOTS | | | | |
|--------------------------------|----------------|---------------|--------------|---------------------|
| TYPE | SIZE OF PLOTS | AREA OF PLOTS | NO. OF PLOTS | TOTAL AREA OF PLOTS |
| | MTS. | SQ.MTS. | | SQ.MTS. |
| A | 6.400 | 18.320 | 15 | 1758.720 |
| B | 6.400 | 15.500 | 67 | 6646.400 |
| M1 | 5.030 | 15.500 | 1 | 77.965 |
| M2 | 5.030 | 15.500 | 1 | 77.965 |
| M3 | 5.030 | 15.500 | 1 | 77.965 |
| M4 | 5.030 | 15.500 | 1 | 77.965 |
| M5 | 5.030 | 15.500 | 1 | 77.965 |
| M6 | 5.030 | 15.500 | 1 | 77.965 |
| M7 | Irregular Plot | 70.172 | 1 | 70.172 |
| M8 | Irregular Plot | 79.497 | 1 | 79.497 |
| M9 | Irregular Plot | 95.786 | 1 | 95.786 |
| M10 | Irregular Plot | 95.586 | 1 | 95.586 |
| M11 | Irregular Plot | 148.036 | 1 | 148.036 |
| M12 | Irregular Plot | 126.882 | 1 | 126.882 |
| M13 | 6.970 | 14.832 | 103.379 | 103.379 |
| M14 | 6.970 | 14.832 | 103.379 | 103.379 |
| M15 | 6.970 | 14.832 | 103.379 | 103.379 |
| M16 | 5.542 | 15.500 | 85.901 | 85.901 |
| M17 | 5.542 | 15.500 | 85.901 | 85.901 |
| M18 | 7.353 | 15.500 | 113.972 | 113.972 |
| TOTAL | | | 100 | 10084.780 |

| GREEN AREA CALCULATION | | | | | |
|------------------------|------------|-------------|-----------------|--------------|-------|
| | LENGTH (M) | BREADTH (M) | AREA (SQ.M.) | CAL. FORMULA | |
| G1 | 36.970 | 15.319 | 283.172 | LXB/2 | |
| G2 | a | 30.467 | 13.995 | 213.193 | LXB/2 |
| G2 | b | 13.995 | 5.998 | 41.971 | LXB/2 |
| G2 | c | 5.998 | 3.315 | 9.942 | LXB/2 |
| G3 | d | 15.500 | 6.725 | 52.119 | LXB/2 |
| G3 | e | 15.500 | 5.293 | 41.021 | LXB/2 |
| G3 | f | 15.500 | 5.293 | 41.021 | LXB/2 |
| G3 | g | 15.500 | 7.597 | 58.877 | LXB/2 |
| G3 | h | 15.500 | 4.988 | 38.502 | LXB/2 |
| G3 | i | 15.500 | 4.988 | 38.502 | LXB/2 |
| G3 | j | 15.500 | 3.309 | 25.845 | LXB/2 |
| G3 | k | 15.500 | 3.309 | 25.845 | LXB/2 |
| G4 | l | 15.500 | 9.451 | 73.245 | LXB/2 |
| G4 | m | 15.500 | 4.906 | 38.022 | LXB/2 |
| G4 | n | 15.500 | 4.906 | 38.022 | LXB/2 |
| G4 | o | 15.500 | 7.997 | 61.977 | LXB/2 |
| G4 | p | 15.898 | 7.032 | 55.897 | LXB/2 |
| G4 | q | 18.221 | 15.898 | 144.839 | LXB/2 |
| G4 | r | 18.221 | 15.898 | 144.839 | LXB/2 |
| G4 | s | 41.589 | 22.900 | 476.194 | LXB/2 |
| G4 | t | 41.589 | 22.900 | 476.194 | LXB/2 |
| G4 | u | 15.500 | 3.280 | 25.420 | LXB/2 |
| G4 | v | 15.500 | 3.280 | 25.420 | LXB/2 |
| G4 | w | 15.500 | 1.334 | 10.339 | LXB/2 |
| G4 | x | 15.500 | 1.334 | 10.339 | LXB/2 |
| G4 | y | 21.826 | 2.576 | 56.224 | LXB |
| G4 | z | 89.600 | 3.477 | 311.539 | LXB |
| G4 | | 91.575 | 3.773 | 345.512 | LXB |
| TOTAL | | | 3163.628 | | |

| COMMERCIAL AREA CALCULATION | | | | |
|-----------------------------|------------|-------------|-----------------|--------------|
| S.NO. | LENGTH (M) | BREADTH (M) | AREA (SQ.M.) | CAL. FORMULA |
| C1 | 48.738 | 21.134 | 515.014 | LXB/2 |
| C2 | 48.738 | 11.069 | 269.740 | LXB/2 |
| C3 | 48.738 | 11.069 | 269.740 | LXB/2 |
| C4 | 48.738 | 25.147 | 612.807 | LXB/2 |
| TOTAL | | | 1667.303 | |

| O.C.F. | | | | |
|--------------|------------|-------------|-----------------|--------------|
| S.NO. | LENGTH (M) | BREADTH (M) | AREA (SQ.M.) | CAL. FORMULA |
| O1 | 40.000 | 38.542 | 770.840 | LXB/2 |
| O2 | 40.000 | 38.542 | 770.840 | LXB/2 |
| O3 | 38.540 | 20.35 | 392.145 | LXB/2 |
| O4 | 38.540 | 20.35 | 392.145 | LXB/2 |
| O5 | 90.532 | 20.351 | 921.208 | LXB/2 |
| O6 | 90.532 | 20.351 | 921.208 | LXB/2 |
| TOTAL | | | 4168.386 | |



| GREEN AREA CALCULATION | | | | | |
|------------------------|------------|-------------|-----------------|--------------|-------|
| | LENGTH (M) | BREADTH (M) | AREA (SQ.M.) | CAL. FORMULA | |
| G1 | 36.970 | 15.319 | 283.172 | LXB/2 | |
| G2 | a | 30.467 | 13.995 | 213.193 | LXB/2 |
| G2 | b | 13.995 | 5.998 | 41.971 | LXB/2 |
| G2 | c | 5.998 | 3.315 | 9.942 | LXB/2 |
| G3 | d | 15.500 | 6.725 | 52.119 | LXB/2 |
| G3 | e | 15.500 | 5.293 | 41.021 | LXB/2 |
| G3 | f | 15.500 | 5.293 | 41.021 | LXB/2 |
| G3 | g | 15.500 | 7.597 | 58.877 | LXB/2 |
| G3 | h | 15.500 | 4.988 | 38.502 | LXB/2 |
| G3 | i | 15.500 | 4.988 | 38.502 | LXB/2 |
| G3 | j | 15.500 | 3.309 | 25.845 | LXB/2 |
| G3 | k | 15.500 | 3.309 | 25.845 | LXB/2 |
| G4 | l | 15.500 | 9.451 | 73.245 | LXB/2 |
| G4 | m | 15.500 | 4.906 | 38.022 | LXB/2 |
| G4 | n | 15.500 | 4.906 | 38.022 | LXB/2 |
| G4 | o | 15.500 | 7.997 | 61.977 | LXB/2 |
| G4 | p | 15.898 | 7.032 | 55.897 | LXB/2 |
| G4 | q | 18.221 | 15.898 | 144.839 | LXB/2 |
| G4 | r | 18.221 | 15.898 | 144.839 | LXB/2 |
| G4 | s | 41.589 | 22.900 | 476.194 | LXB/2 |
| G4 | t | 41.589 | 22.900 | 476.194 | LXB/2 |
| G4 | u | 15.500 | 3.280 | 25.420 | LXB/2 |
| G4 | v | 15.500 | 3.280 | 25.420 | LXB/2 |
| G4 | w | 15.500 | 1.334 | 10.339 | LXB/2 |
| G4 | x | 15.500 | 1.334 | 10.339 | LXB/2 |
| G4 | y | 21.826 | 2.576 | 56.224 | LXB |
| G4 | z | 89.600 | 3.477 | 311.539 | LXB |
| G4 | | 91.575 | 3.773 | 345.512 | LXB |
| TOTAL | | | 3163.628 | | |

PROJECT NAME AND ADDRESS:
 DEMARCATION PLAN OF PROPOSED RESIDENTIAL PLOTTED COLONY UNDER DEEN DAYAL JAN AWAS YOJANA, IN SECTOR-92, GURUGRAM, OVER AN AREA OF 10.30 ACRES BEING DEVELOPED BY SIGNATURE INFRABUILD PVT. LTD., License No 12. of 2023 Dated 12/07/23

OWNER'S NAME:
 SIGNATURE INFRABUILD PVT. LTD.

TITLE:
 DEMARCATION PLAN

ARCHITECT'S SIGNATURE

OWNER'S SIGNATURE

NORTH:

DATE:
 SHEET: 01
 SCALE: NTS

BTP
 ATT
 TO Navita
 VE Ram