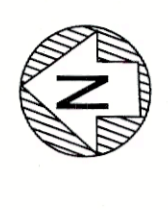


D.T.P
P. Anand
J.D. Mani
FI - Seal



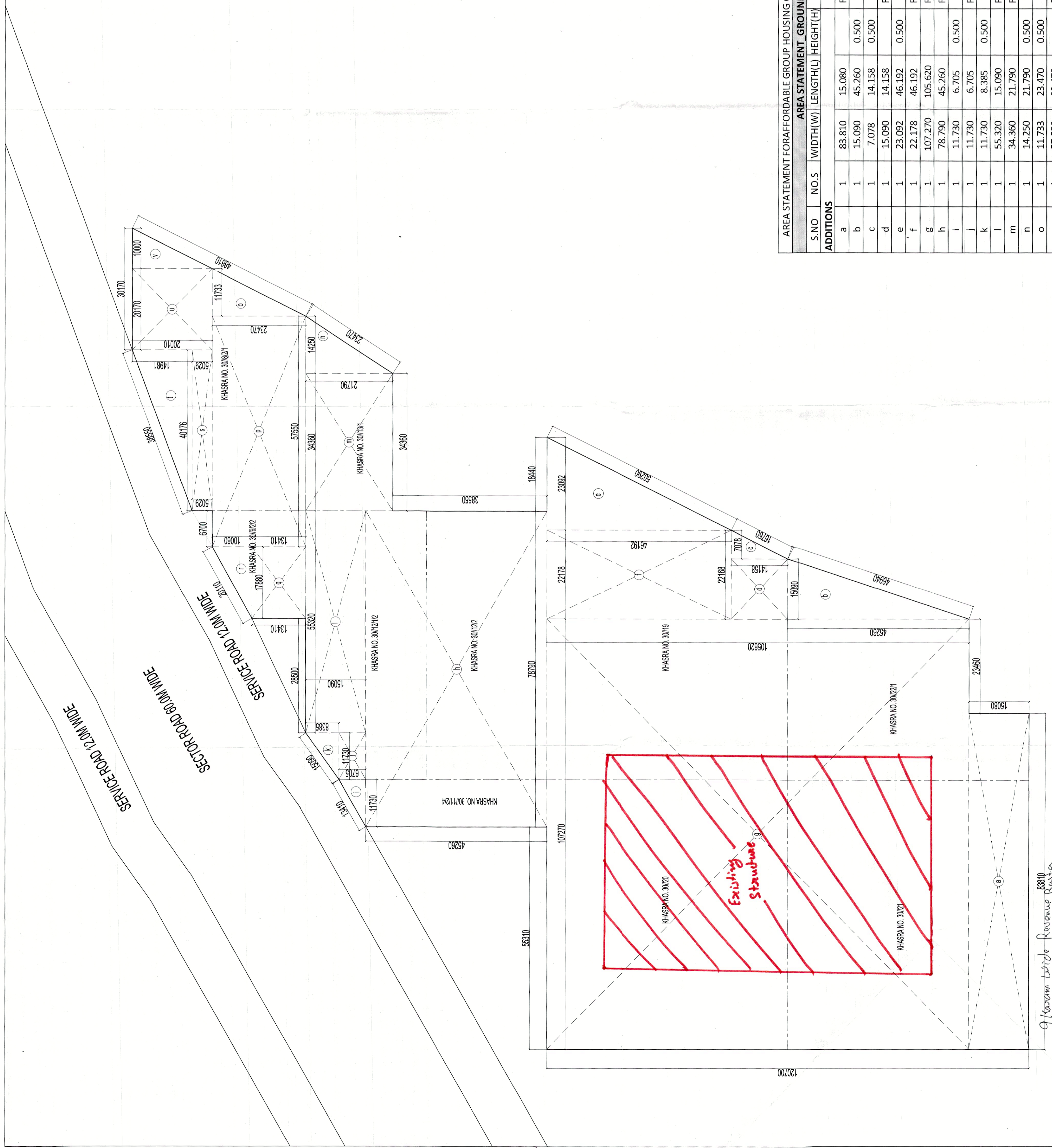
DEMARCATION PLAN OF AFFORDABLE GROUP HOUSING COLONY ON THE
LAND MEASURING 6.6825 ACRE AT VILLAGE NAVADA FATEHPUR,
SECTOR-81, TEHSIL MANESAR, DISTT. GURGAON, BELONGING TO SMT. GEETA YADAV,
SMT. ANITA YADAV, SH. MUNESH YADAV, SMT. JAGWA TI & VEENA INDUSTRIES,
IN COLLABORATION WITH M/S GLS INFRACON PVT. LTD.
VIDE LOI MEMO NO. LC-3774-Asstt(AK)/2020/16240 DATED 14-09-2020.

For GLS INFRACON PVT. LTD.
Authorized Signatory
VIMAL BAJAJ
Architect CA/96/19781
938, Sector-14, Gurgaon

OWNERS

AS PER LOT ISSUED TOTAL AREA OF SITE = 5.6625 ACRE

AREA STATEMENT FOR AFFORDABLE GROUP HOUSING COLONY OUTER TO OUTER (1 NOS.)						
AREA STATEMENT - GROUND FLOOR						
S.NO	NO.S	WIDTH(W)	LENGTH(L)	HEIGHT(H)	POLYLINE	FORMULA
ADDITIONS						
a	1	83.810	15.080		RECTANGLE	LXW
b	1	15.090	45.260	0.500	TRIANGLE	LXW
c	1	7.078	14.158	0.500	TRIANGLE	LXW
d	1	15.090	14.158		RECTANGLE	LXW
e	1	23.092	46.192	0.500	TRIANGLE	LXW
f	1	22.178	46.192		RECTANGLE	LXW
g	1	107.270	105.620		RECTANGLE	LXW
h	1	78.790	45.260		RECTANGLE	LXW
i	1	11.730	6.705	0.500	TRIANGLE	LXW
j	1	11.730	6.705		RECTANGLE	LXW
k	1	11.730	8.385	0.500	TRIANGLE	LXW
l	1	55.320	15.090		RECTANGLE	LXW
m	1	34.360	21.790		RECTANGLE	LXW
n	1	14.250	21.790	0.500	TRIANGLE	LXW
o	1	11.733	23.470	0.500	TRIANGLE	LXW
p	1	57.550	23.470		RECTANGLE	LXW
q	1	17.880	13.410		RECTANGLE	LXW
r	1	17.880	10.060	0.500	TRIANGLE	LXW
s	1	40.176	5.029		RECTANGLE	LXW
t	1	40.176	14.981	0.500	TRIANGLE	LXW
u	1	20.170	20.010		RECTANGLE	LXW
v	1	10.000	20.010	0.500	TRIANGLE	LXW
TOTAL AREA =						23053.375
OR 5.69666 ACRE =						



DEMARCATION PLAN

9 Karam Chide Revenue Post 8880