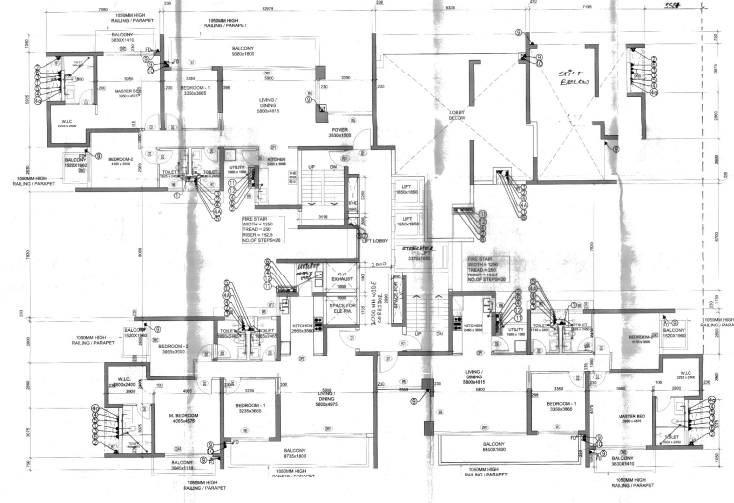
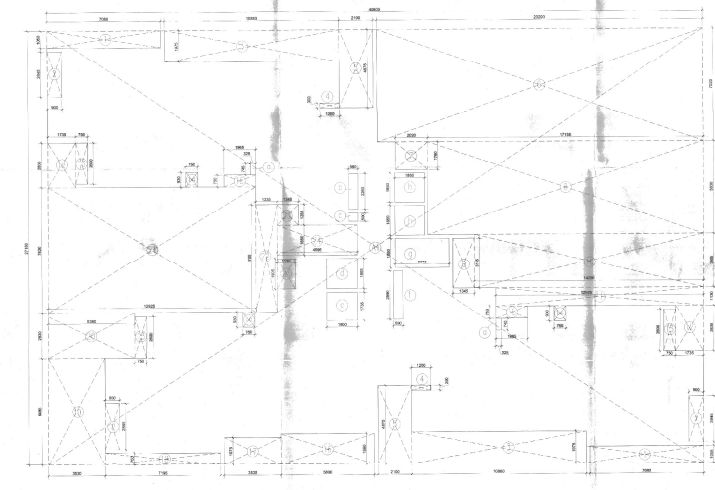


GROUND FLOOR PLAN / STAIR FLOOR
(LV. +300)

| AREA CALCULATION FOR GROUND FLOOR | | | | SCHEDULE OF OPENINGS | | | |
|-----------------------------------|--------|-------|--------|----------------------|--------|-------|--------|
| NO. | SYMBOL | WIDTH | HEIGHT | NO. | TYPE | WIDTH | HEIGHT |
| 1 | 100 | 100 | 100 | 1 | DOOR | 100 | 200 |
| 2 | 200 | 200 | 200 | 2 | WINDOW | 150 | 150 |
| 3 | 300 | 300 | 300 | 3 | DOOR | 100 | 200 |
| 4 | 400 | 400 | 400 | 4 | WINDOW | 150 | 150 |
| 5 | 500 | 500 | 500 | 5 | DOOR | 100 | 200 |
| 6 | 600 | 600 | 600 | 6 | WINDOW | 150 | 150 |
| 7 | 700 | 700 | 700 | 7 | DOOR | 100 | 200 |
| 8 | 800 | 800 | 800 | 8 | WINDOW | 150 | 150 |
| 9 | 900 | 900 | 900 | 9 | DOOR | 100 | 200 |
| 10 | 1000 | 1000 | 1000 | 10 | WINDOW | 150 | 150 |
| 11 | 1100 | 1100 | 1100 | 11 | DOOR | 100 | 200 |
| 12 | 1200 | 1200 | 1200 | 12 | WINDOW | 150 | 150 |
| 13 | 1300 | 1300 | 1300 | 13 | DOOR | 100 | 200 |
| 14 | 1400 | 1400 | 1400 | 14 | WINDOW | 150 | 150 |
| 15 | 1500 | 1500 | 1500 | 15 | DOOR | 100 | 200 |
| 16 | 1600 | 1600 | 1600 | 16 | WINDOW | 150 | 150 |
| 17 | 1700 | 1700 | 1700 | 17 | DOOR | 100 | 200 |
| 18 | 1800 | 1800 | 1800 | 18 | WINDOW | 150 | 150 |
| 19 | 1900 | 1900 | 1900 | 19 | DOOR | 100 | 200 |
| 20 | 2000 | 2000 | 2000 | 20 | WINDOW | 150 | 150 |
| 21 | 2100 | 2100 | 2100 | 21 | DOOR | 100 | 200 |
| 22 | 2200 | 2200 | 2200 | 22 | WINDOW | 150 | 150 |
| 23 | 2300 | 2300 | 2300 | 23 | DOOR | 100 | 200 |
| 24 | 2400 | 2400 | 2400 | 24 | WINDOW | 150 | 150 |
| 25 | 2500 | 2500 | 2500 | 25 | DOOR | 100 | 200 |
| 26 | 2600 | 2600 | 2600 | 26 | WINDOW | 150 | 150 |
| 27 | 2700 | 2700 | 2700 | 27 | DOOR | 100 | 200 |
| 28 | 2800 | 2800 | 2800 | 28 | WINDOW | 150 | 150 |
| 29 | 2900 | 2900 | 2900 | 29 | DOOR | 100 | 200 |
| 30 | 3000 | 3000 | 3000 | 30 | WINDOW | 150 | 150 |
| 31 | 3100 | 3100 | 3100 | 31 | DOOR | 100 | 200 |
| 32 | 3200 | 3200 | 3200 | 32 | WINDOW | 150 | 150 |
| 33 | 3300 | 3300 | 3300 | 33 | DOOR | 100 | 200 |
| 34 | 3400 | 3400 | 3400 | 34 | WINDOW | 150 | 150 |
| 35 | 3500 | 3500 | 3500 | 35 | DOOR | 100 | 200 |
| 36 | 3600 | 3600 | 3600 | 36 | WINDOW | 150 | 150 |
| 37 | 3700 | 3700 | 3700 | 37 | DOOR | 100 | 200 |
| 38 | 3800 | 3800 | 3800 | 38 | WINDOW | 150 | 150 |
| 39 | 3900 | 3900 | 3900 | 39 | DOOR | 100 | 200 |
| 40 | 4000 | 4000 | 4000 | 40 | WINDOW | 150 | 150 |
| 41 | 4100 | 4100 | 4100 | 41 | DOOR | 100 | 200 |
| 42 | 4200 | 4200 | 4200 | 42 | WINDOW | 150 | 150 |
| 43 | 4300 | 4300 | 4300 | 43 | DOOR | 100 | 200 |
| 44 | 4400 | 4400 | 4400 | 44 | WINDOW | 150 | 150 |
| 45 | 4500 | 4500 | 4500 | 45 | DOOR | 100 | 200 |
| 46 | 4600 | 4600 | 4600 | 46 | WINDOW | 150 | 150 |
| 47 | 4700 | 4700 | 4700 | 47 | DOOR | 100 | 200 |
| 48 | 4800 | 4800 | 4800 | 48 | WINDOW | 150 | 150 |
| 49 | 4900 | 4900 | 4900 | 49 | DOOR | 100 | 200 |
| 50 | 5000 | 5000 | 5000 | 50 | WINDOW | 150 | 150 |



FIRST FLOOR PLAN
(LV. +525)

| AREA CALCULATION FOR FIRST FLOOR | | | | PLUMBING LEGEND: | |
|----------------------------------|--------|-------|--------|------------------|-----------------------------------|
| NO. | SYMBOL | WIDTH | HEIGHT | SYMBOL | DESCRIPTION |
| 1 | 100 | 100 | 100 | 1 | 110 OD SOIL & VENT PIPE |
| 2 | 200 | 200 | 200 | 2 | 110 OD WASTE & VENT PIPE (TOILET) |
| 3 | 300 | 300 | 300 | 3 | 80 OD ANTI-SIPHONAGE PIPE |
| 4 | 400 | 400 | 400 | 4 | COLD WATER SUPPLY |
| 5 | 500 | 500 | 500 | 5 | FLUSHING WATER SUPPLY |
| 6 | 600 | 600 | 600 | 6 | 110 OD RAIN WATER PIPE (STORAGE) |
| 7 | 700 | 700 | 700 | 7 | DOMESTIC WATER SUPPLY (KITCHEN) |
| 8 | 800 | 800 | 800 | 8 | FLUSHING WATER SUPPLY (SEWER) |
| 9 | 900 | 900 | 900 | 9 | 110 OD RAIN WATER PIPE (BALCONY) |
| 10 | 1000 | 1000 | 1000 | 10 | FLOOR DRAIN OF BALCONY |
| 11 | 1100 | 1100 | 1100 | 11 | AC UNIT DRAIN OF BALCONY |
| 12 | 1200 | 1200 | 1200 | 12 | HOT WATER |
| 13 | 1300 | 1300 | 1300 | 13 | HOT WATER RETURN |
| 14 | 1400 | 1400 | 1400 | 14 | COB (SEWER OUT FLOW) |

PROJECT - **Ma Peta Bersema, Penang**
 GROUP HOUSING SCHEME MEASUREMENT
 60.75 ACRES LICENCE NO. 106 OF 2011
 DATED 11.12.2011, 68.95 ACRES LICENCE NO.
 86 OF 2012 DATED 26.05.2012 AND 1.0073
 ACRES LICENCE NO. 86 OF 2012 DATED
 26.05.2012

TOTAL 27.4675 ACRES IN SECTION 112 & 113,
 BUKIT MANGKAP URBAN COMPLEX BEING
 DEVELOPED BY S.S.A. ESTATES PVT. LTD.,
 501, MANJERIE ROAD, S.P. COMPLEX, BUKIT
 BULDUWELLY, 11200, AND 4715, C-19 (S.P.)
 BUKIT MANGKAP, PENANG.

DRG TITLE: **GROUP HOUSING SCHEME MEASUREMENT**
 BUILDING & ELECTRICAL
 GROUND FLOOR PLAN
 AD 25 SD NP

| REVISION | JOB NO. | DRG NO. | NORTH |
|----------|---------|-----------|-------|
| 1 | BA-100 | 25-FEB-13 | |

SCALE: 1:100
 DATE: 25-FEB-13

FILE: DEALT BY: CHECKED BY: APPROVED BY:

SIGNATURE & SEAL OF ARCHITECT: *[Signature]*
 SIGNATURE & SEAL OF OWNER: *[Signature]*