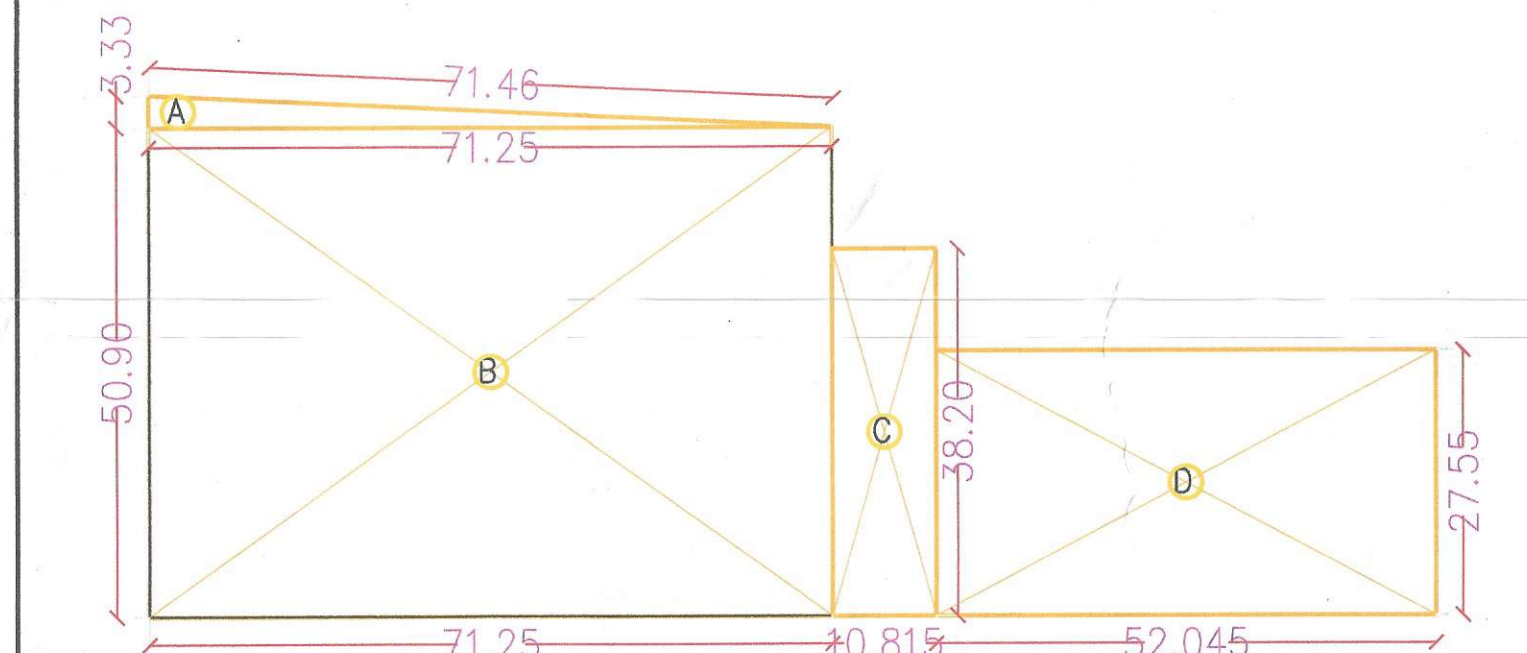
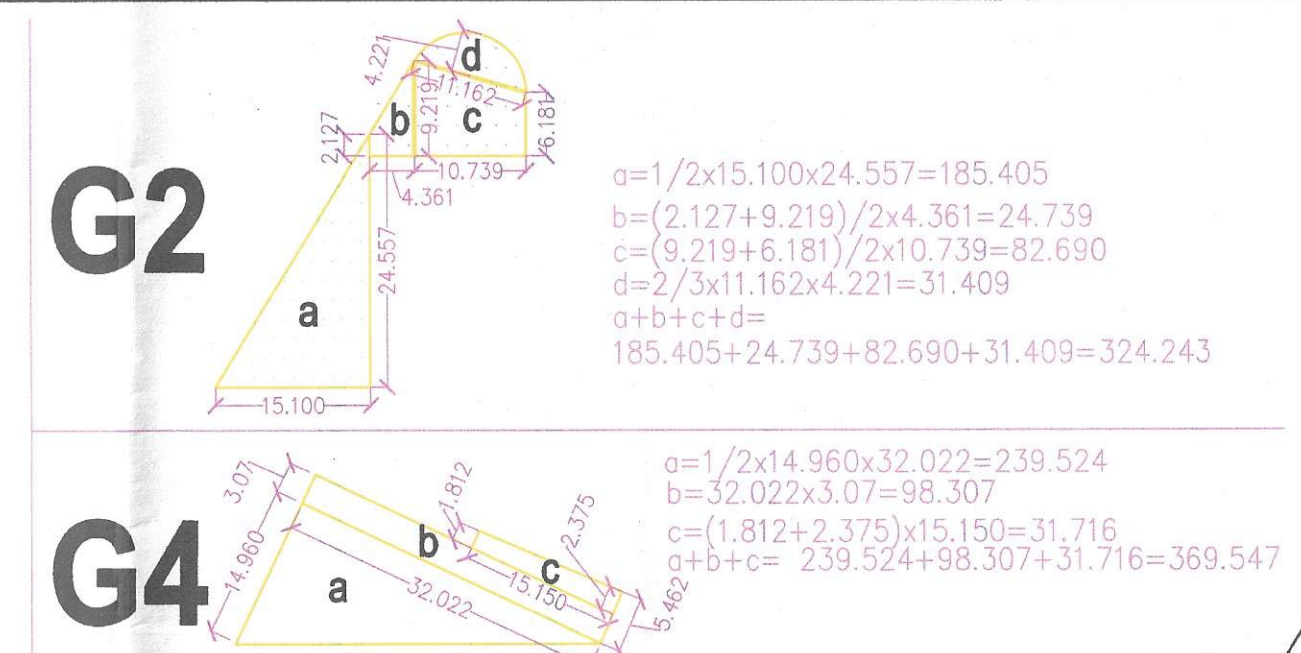
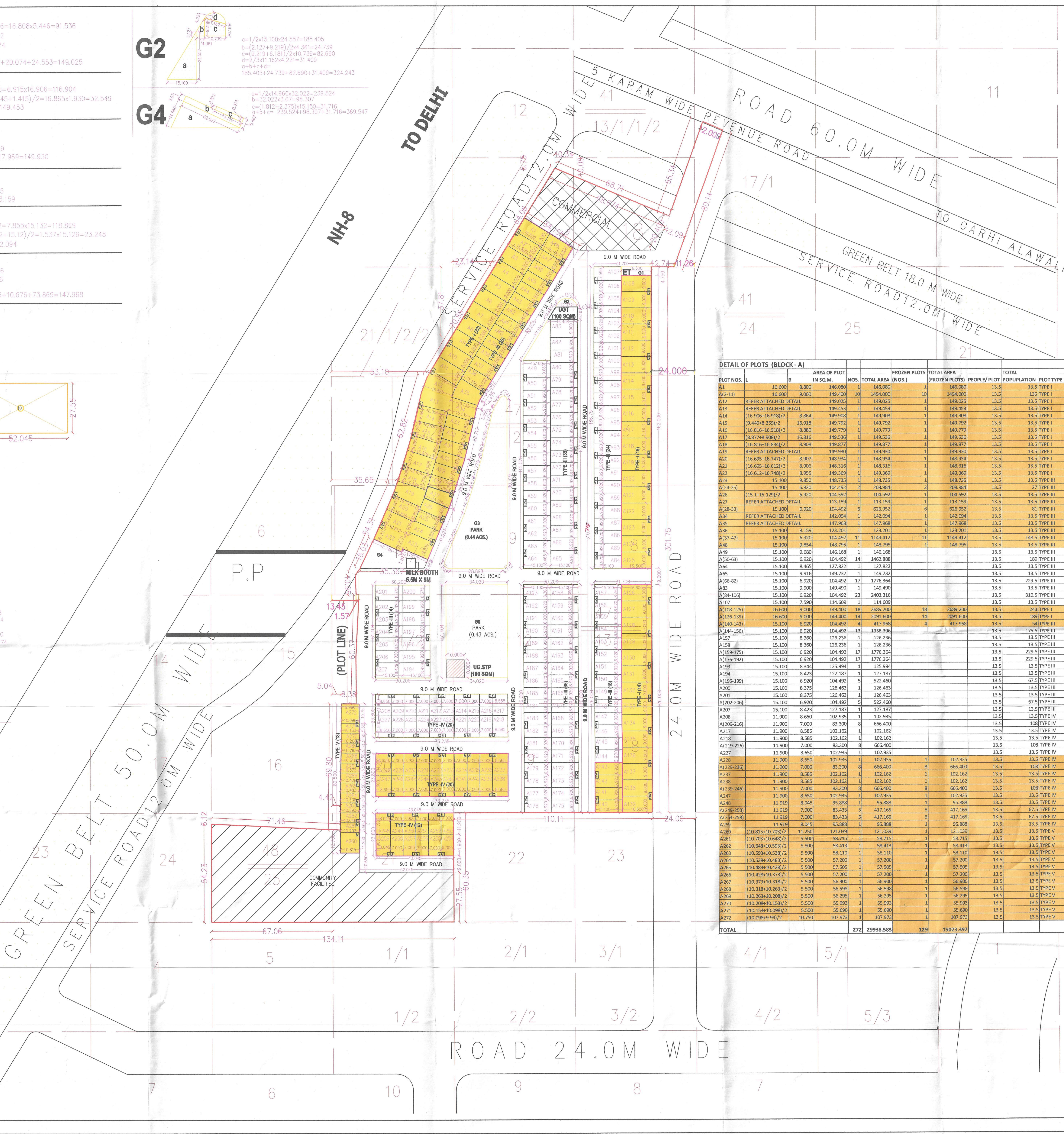
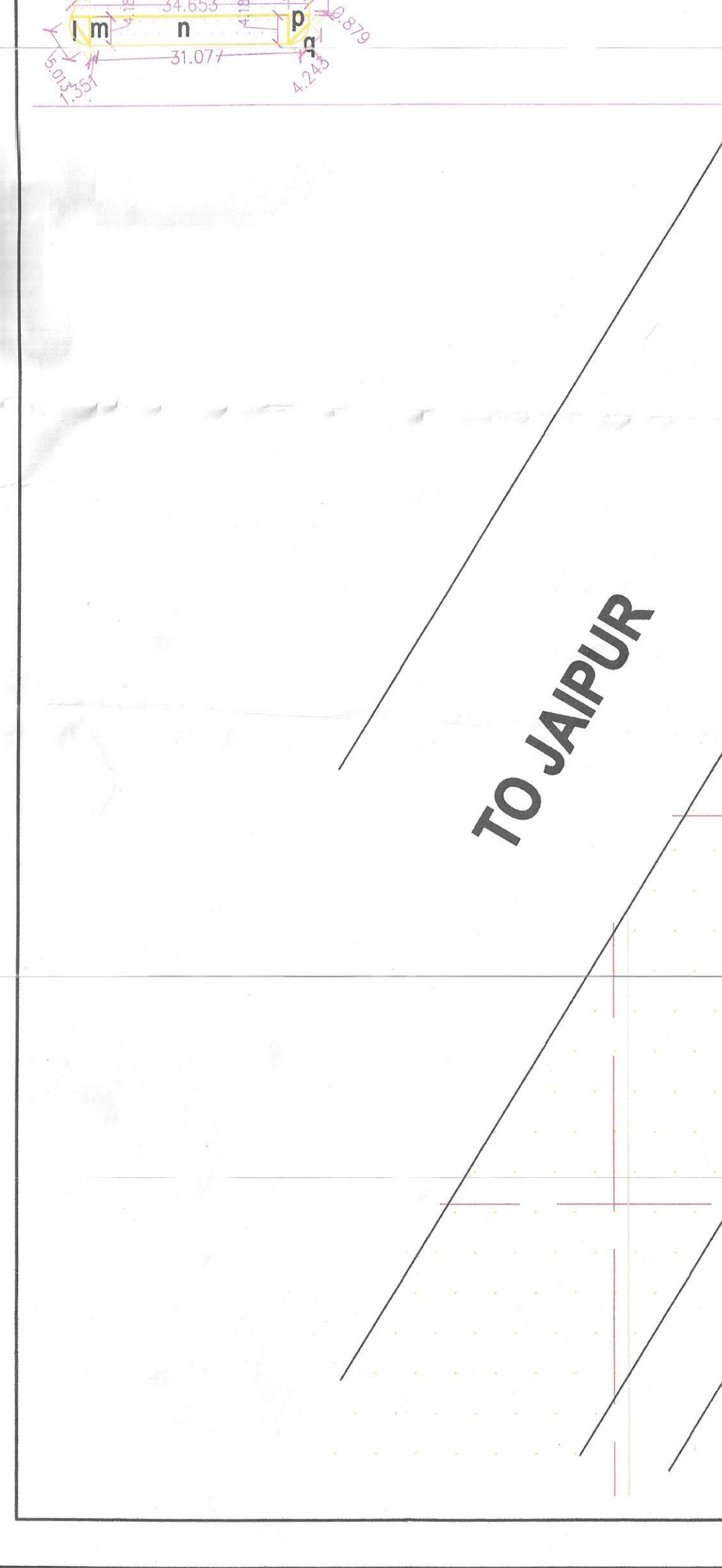
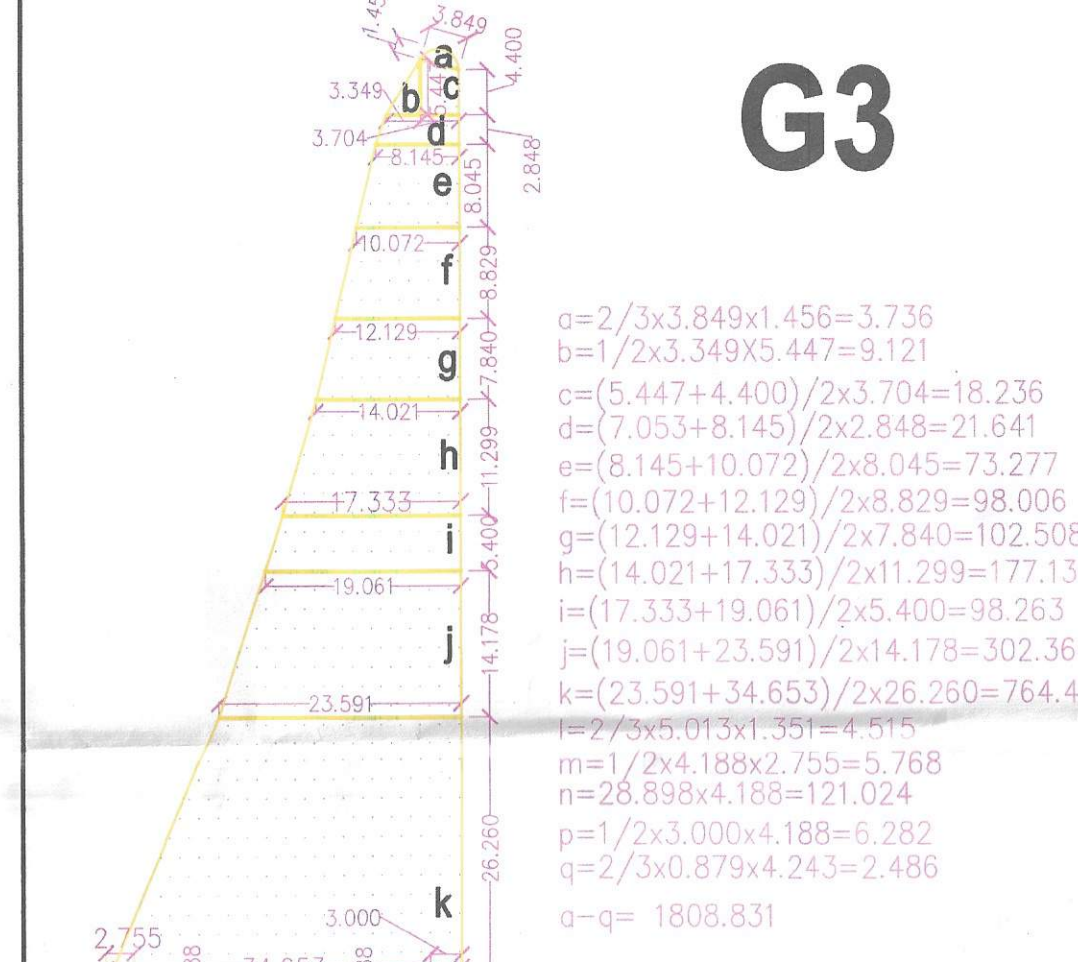


A12		$a = (16.825 + 16.791) / 2 \times 5.446 = 16.808 \times 5.446 = 91.536$ $b = (1.543 + 16.672) / 2 = 12.862$ $c = (2.420 + 16.590) / 2 = 20.074$ $d = 16.590 \times 1.480 = 24.553$ $a+b+c+d = 91.536 + 12.862 + 20.074 + 24.553 = 148.025$
A13		$a = (7.073 + 6.757) / 2 \times 16.906 = 6.915 \times 16.906 = 116.904$ $b = (16.825 + 16.906) / 2 \times (2.445 + 1.415) / 2 = 16.865 \times 1.930 = 32.549$ $a+b = 116.904 + 32.549 = 149.453$
A19		$a = 16.834 \times 6.922 = 78.985$ $b = 16.834 \times 1.47 = 24.747$ $c = (16.747 + 2.146) / 2 = 17.969$ $a+b+c = 78.985 + 24.747 + 17.969 = 121.701$
A27		$a = 15.100 \times 6.797 = 102.634$ $b = (15.100 \times 1.394) / 2 = 10.525$ $a+b = 102.634 + 10.525 = 113.159$
A34		$a = (7.828 + 7.883) / 2 \times 15.132 = 7.855 \times 15.132 = 118.869$ $b = (1.525 + 1.549) / 2 \times (15.132 + 15.12) / 2 = 1.537 \times 15.126 = 23.248$ $a+b = 118.869 + 23.248 = 142.117$
A35		$a = 15.120 \times 3.105 = 46.947$ $b = (2.173 + 15.165) / 2 = 16.476$ $c = (1.414 + 15.100) / 2 = 10.676$ $d = 15.100 \times 4.892 = 73.869$ $a+b+c+d = 46.947 + 16.476 + 10.676 + 73.869 = 147.968$



**COMMUNITY FACILITIES:**  
A=1/2x71.25x3.33 = 118.631 SQ. M.  
B=71.25x50.90 = 3626.625 SQ. M.  
C=10.815x38.20 = 413.133 SQ. M.  
D=52.045x27.55 = 1433.839 SQ. M.  
TOTAL AREA = 5592.228 SQ. M.



LOT NOS.	A	B	C	D	E	F	G	H	I	J	K	L	M	N	O	P	Q	R	S	T	U	V	W	X	Y	Z	AA	AB	AC	AD	AE	AF	AG	AH	AI	AJ	AK	AL	AM	AN	AO	AP	AQ	AR	AS	AT	AU	AV	AW	AX	AY	AZ	BA	BB	BC	BD	BE	BF	BG	BH	BI	BJ	BK	BL	BM	BN	BO	BP	BQ	BR	BS	BT	BU	BV	BW	BX	BY	BZ	CA	CB	CC	CD	CE	CF	CG	CH	CI	CJ	CK	CL	CM	CN	CO	CP	CQ	CR	CS	CT	CU	CV	CW	CX	CY	CZ	DA	DB	DC	DD	DE	DF	DG	DH	DI	DJ	DK	DL	DM	DN	DO	DP	DQ	DR	DS	DT	DU	DV	DW	DX	DY	DZ	EA	EB	EC	ED	EE	EF	EG	EH	EI	EJ	EK	EL	EM	EN	EO	EP	EQ	ER	ES	ET	EU	EV	EW	EX	EY	EZ	FA	FB	FC	FD	FE	FF	FG	FH	FI	FJ	FK	FL	FM	FN	FO	FP	FQ	FR	FS	FT	FU	FV	FW	FX	FY	FZ	GA	GB	GC	GD	GE	GF	GG	GH	GI	GJ	GK	GL	GM	GN	GO	GP	GQ	GR	GS	GT	GU	GV	GW	GX	GY	GZ	HA	HB	HC	HD	HE	HF	HG	HH	HI	HJ	HK	HL	HM	HN	HO	HP	HQ	HR	HS	HT	HU	HV	HW	HX	HY	HZ	IA	IB	IC	ID	IE	IF	IG	IH	II	IJ	IK	IL	IM	IN	IO	IP	IQ	IR	IS	IT	IU	IV	IW	IX	IY	IZ	JA	JB	JC	JD	JE	JF	JG	JH	JI	IJ	JK	KL	LM	LN	LO	LP	LQ	LR	LS	LT	LU	LV	LW	LX	LY	LZ	MA	MB	MC	MD	ME	MF	MG	MH	MI	MJ	MK	ML	MM	MN	MO	MP	MQ	MR	MS	MT	MU	MV	MW	MX	MY	MZ	NA	NB	NC	ND	NE	NF	NG	NH	NI	NJ	NK	NL	NM	NN	NO	NP	NQ	NR	NS	NT	NU	NV	NW	NX	NY	NZ	OA	OB	OC	OD	OE	OF	OG	OH	OI	OJ	OK	OL	OM	ON	OO	OP	OQ	OR	OS	OT	OU	OV	OW	OX	OY	OZ	PA	PB	PC	PD	PE	PF	PG	PH	PI	PJ	PK	PL	PM	PN	PO	PP	PQ	PR	PS	PT	PU	PV	PW	PX	PY	PZ	QA	QB	QC	QD	QE	QF	QG	QH	QI	QJ	QK	QL	QM	QN	QO	QP	QQ	QR	QS	QT	QU	QV	QW	QX	QY	QZ	RA	RB	RC	RD	RE	RF	RG	RH	RI	RJ	RK	RL	RM	RN	RO	RP	RQ	RR	RS	RT	RU	RV	RW	RX	RY	RZ	SA	SB	SC	SD	SE	SF	SG	SH	SI	SJ	SK	SL	SM	SN	SO	SP	SQ	SR	SS	ST	SU	SV	SW	SX	SY	SZ	TA	TB	TC	TD	TE	TF	TG	TH	TI	TJ	TK	TL	TM	TN	TO	TP	TQ	TR	TS	TT	TU	TV	TW	TX	TY	TZ	UA	UB	UC	UD	UE	UF	UG	UH	UI	UJ	UK	UL	UM	UN	UO	UP	UQ	UR	US	UT	UU	UV	UW	UX	UY	UZ	VA	VB	VC	VD	VE	VF	VG	VH	VI	VJ	VK	VL	VM	VN	VO	VP	VQ	VR	VS	VT	VU	VV	VW	VX	VY	VZ	WA	WB	WC	WD	WE	WF	WG	WH	WI	WJ	WK	WL	WM	WN	WO	WP	WQ	WR	WS	WT	WU	WV	WW	WX	WY	WZ	XA	XB	XC	XD	XE	XF	YG	YH	YI	YJ	YK	YL	YM	YN	YO	YP	YQ	YR	YS	YT	YU	YV	YW	YX	YY	YZ	ZA	ZB	ZC	ZD	ZE	ZF	ZG	ZH	ZI	ZJ	ZK	ZL	ZM	ZN	ZO	ZP	ZQ	ZR	ZS	ZT	ZU	ZV	ZW	ZX	ZY	ZA	ZB	ZC	ZD	ZE	ZF	ZG	ZH	ZI	ZJ	ZK	ZL	ZM	ZN	ZO	ZP	ZQ	ZR	ZS	ZT	ZU	ZV	ZW	ZX	ZY	ZZ
1	16.900	8.900	148.000	1	148.000	1	148.000	13.5	13.5	TYPE I																																																																																																																																																																																																																																																																																																																																																																																																																																																																																																																																																																																																																																																															
2	16.900	8.900	148.000	10	1480.000	10	1480.000	13.5	13.5	TYPE I																																																																																																																																																																																																																																																																																																																																																																																																																																																																																																																																																																																																																																																															
3	16.900	8.900	148.000	1	148.000	1	148.000	13.5	13.5	TYPE I																																																																																																																																																																																																																																																																																																																																																																																																																																																																																																																																																																																																																																																															
4	16.900	8.900	148.000	1	148.000	1	148.000	13.5	13.5	TYPE I																																																																																																																																																																																																																																																																																																																																																																																																																																																																																																																																																																																																																																																															
5	16.900	8.900	148.000	1	148.000	1	148.000	13.5	13.5	TYPE I																																																																																																																																																																																																																																																																																																																																																																																																																																																																																																																																																																																																																																																															
6	16.900	8.900	148.000	1	148.000	1	148.000	13.5	13.5	TYPE I																																																																																																																																																																																																																																																																																																																																																																																																																																																																																																																																																																																																																																																															
7	16.900	8.900	148.000	1	148.000	1	148.000	13.5	13.5	TYPE I																																																																																																																																																																																																																																																																																																																																																																																																																																																																																																																																																																																																																																																															
8	16.900	8.900	148.000	1	148.000	1	148.000	13.5	13.5	TYPE I																																																																																																																																																																																																																																																																																																																																																																																																																																																																																																																																																																																																																																																															
9	16.900	8.900	148.000	1	148.000	1	148.000	13.5	13.5	TYPE I																																																																																																																																																																																																																																																																																																																																																																																																																																																																																																																																																																																																																																																															
10	16.900	8.900	148.000	1	148.000	1	148.000	13.5	13.5	TYPE I																																																																																																																																																																																																																																																																																																																																																																																																																																																																																																																																																																																																																																																															
11	16.900	8.900	148.000	1	148.000	1	148.000	13.5	13.5	TYPE I																																																																																																																																																																																																																																																																																																																																																																																																																																																																																																																																																																																																																																																															
12	16.900	8.900	148.000	1	148.000	1	148.000	13.5	13.5	TYPE I																																																																																																																																																																																																																																																																																																																																																																																																																																																																																																																																																																																																																																																															
13	16.900	8.900	148.000	1	148.000	1	148.000	13.5	13.5	TYPE I																																																																																																																																																																																																																																																																																																																																																																																																																																																																																																																																																																																																																																																															
14	16.900	8.900	148.000	1	148.000	1	148.000	13.5	13.5	TYPE I																																																																																																																																																																																																																																																																																																																																																																																																																																																																																																																																																																																																																																																															
15	16.900	8.900	148.000	1	148.000	1	148.000	13.5	13.5	TYPE I																																																																																																																																																																																																																																																																																																																																																																																																																																																																																																																																																																																																																																																															
16	16.900	8.900	148.000	1	148.000	1	148.000	13.5	13.5	TYPE I																																																																																																																																																																																																																																																																																																																																																																																																																																																																																																																																																																																																																																																															
17	16.900	8.900	148.000	1	148.000	1	148.000	13.5	13.5	TYPE I																																																																																																																																																																																																																																																																																																																																																																																																																																																																																																																																																																																																																																																															
18	16.900	8.900	148.000	1	148.000	1	148.000	13.5	13.5	TYPE I																																																																																																																																																																																																																																																																																																																																																																																																																																																																																																																																																																																																																																																															
19	16.900	8.900	148.000	1	148.000	1	148.000	13.5	13.5	TYPE I																																																																																																																																																																																																																																																																																																																																																																																																																																																																																																																																																																																																																																																															
20	16.900	8.900	148.000	1	148.000	1	148.000	13.5	13.5	TYPE I																																																																																																																																																																																																																																																																																																																																																																																																																																																																																																																																																																																																																																																															
21	16.900	8.900	148.000	1	148.000	1	148.000	13.5	13.5	TYPE I																																																																																																																																																																																																																																																																																																																																																																																																																																																																																																																																																																																																																																																															
22	16.900	8.900	148.000	1	148.000	1	148.000	13.5	13.5	TYPE I																																																																																																																																																																																																																																																																																																																																																																																																																																																																																																																																																																																																																																																															
23	16.900	8.900	148.000	1	148.000	1	148.000	13.5	13.5	TYPE I																																																																																																																																																																																																																																																																																																																																																																																																																																																																																																																																																																																																																																																															
24	16.900	8.900	148.000	1	148.000	1	148.000	13.5	13.5	TYPE I																																																																																																																																																																																																																																																																																																																																																																																																																																																																																																																																																																																																																																																															
25	16.900	8.900	148.000	1	148.000	1	148.000	13.5	13.5	TYPE I																																																																																																																																																																																																																																																																																																																																																																																																																																																																																																																																																																																																																																																															

AFFORDABLE PLOTTED COLONY - 13.80625 ACS.				
S. NO.	DESCRIPTION	%	AREA IN ACRES	AREA IN SQM.
1	MAX. PERMISSIBLE AREA UNDER PLOTTING	61	8.4218125	34081.812
2	PROPOSED AREA UNDER PLOTTING	53.58	7.3979	29938.583
3	PERMISSIBLE AREA FOR COMMUNITY SITE	10	1.380625	5587.182
4	AREA PROVIDED FOR COMMUNITY SITE	10	1.381871	5592.228
5	PERMISSIBLE AREA UNDER COMMERCIAL	4	0.55225	2234.872
6	PROPOSED AREA UNDER COMMERCIAL	4	0.55235	2235.431
7	MIN. GREEN AREA REQUIRED	7.5	1.0354	4190.108
8	PROVIDED GREEN AREA	7.75	1.070	4330.235
9	PERMISSIBLE POPULATION	200-400 PPA		
10	PROPOSED POPULATION	266 PPA	272 (TOTAL POPULATION=3672)	

DETAIL OF PLOTS				
S.NO.	TYPE	PLOT NO.	TOTAL AREA(SQM.)	TOTAL AREA(ACRES)
1	TYPE-I	54	8064.801	1.9928
2	TYPE-III	153	16504.062	4.0782
3	TYPE-IV	52	4512.09	1.1149
4	TYPE-V	13	857.63	0.212
	TOTAL	272	29938.583	7.3979

DETAIL OF FREEZE PLOTS (50% OF TOTAL PLOTS)				
S.NO.	TYPE	NO.	TOTAL AREA(sq.m)	TOTAL AREA(ACRES)
1	TYPE-I	54	8064.801	1.9928
2	TYPE-III	30	3331.861	0.8233
3	TYPE-IV	32	2769.10	0.6842
4	TYPE-V	13	857.63	0.212
	TOTAL NOS. =141		15023.392	3.7123
			AREA IN ACRES =	3.7123(50.18%)

GREEN AREA TABLE:					
S. NO.	DESCRIPTION	L	B	AREA (IN SQM)	AREA (IN ACS)
1	G1				