

**PRIMARY SCHOOL PLOT AREA**  
 PRIMARY SCHOOL PLOT AREA  
 = 4047.120 SQ.MT.  
 = 100000 ACHE

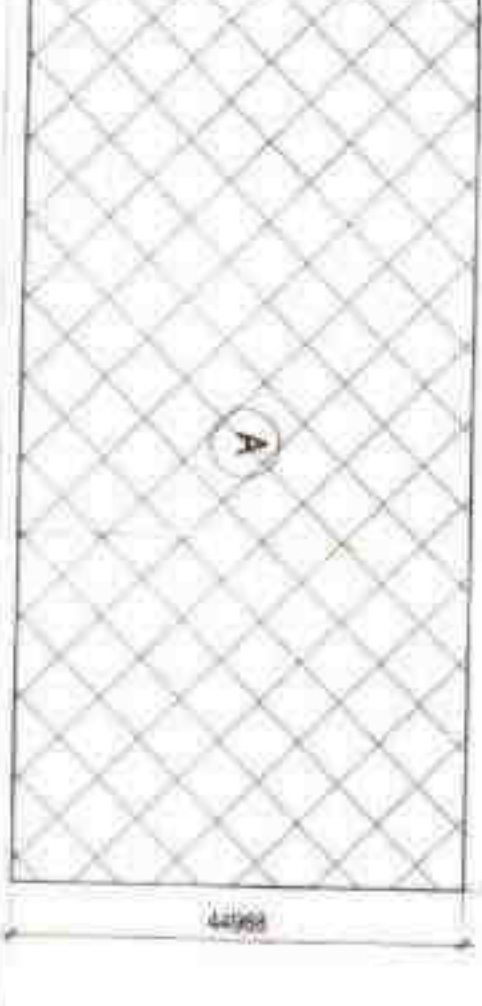
NO.	DESCRIPTION	AREA (SQ.M)	PERCENTAGE (%)
1	PLANTATION	100	2.47
2	ROAD	100	2.47
3	WATER	100	2.47
4	WALL	100	2.47
5	WELL	100	2.47
6	WINDMILL	100	2.47
7	WATER TOWER	100	2.47
8	WATER TOWER	100	2.47
9	WATER TOWER	100	2.47
10	WATER TOWER	100	2.47
11	WATER TOWER	100	2.47
12	WATER TOWER	100	2.47
13	WATER TOWER	100	2.47
14	WATER TOWER	100	2.47
15	WATER TOWER	100	2.47
16	WATER TOWER	100	2.47
17	WATER TOWER	100	2.47
18	WATER TOWER	100	2.47
19	WATER TOWER	100	2.47
20	WATER TOWER	100	2.47
21	WATER TOWER	100	2.47
22	WATER TOWER	100	2.47
23	WATER TOWER	100	2.47
24	WATER TOWER	100	2.47
25	WATER TOWER	100	2.47
26	WATER TOWER	100	2.47
27	WATER TOWER	100	2.47
28	WATER TOWER	100	2.47
29	WATER TOWER	100	2.47
30	WATER TOWER	100	2.47
31	WATER TOWER	100	2.47
32	WATER TOWER	100	2.47
33	WATER TOWER	100	2.47
34	WATER TOWER	100	2.47
35	WATER TOWER	100	2.47
36	WATER TOWER	100	2.47
37	WATER TOWER	100	2.47
38	WATER TOWER	100	2.47
39	WATER TOWER	100	2.47
40	WATER TOWER	100	2.47
41	WATER TOWER	100	2.47
42	WATER TOWER	100	2.47
43	WATER TOWER	100	2.47
44	WATER TOWER	100	2.47
45	WATER TOWER	100	2.47
46	WATER TOWER	100	2.47
47	WATER TOWER	100	2.47
48	WATER TOWER	100	2.47
49	WATER TOWER	100	2.47
50	WATER TOWER	100	2.47

**NURSERY SCHOOL - 01 PLOT AREA**  
 NURSERY SCHOOL - 01 PLOT AREA  
 = 820.26 SQ.MT.  
 = 0.2027 ACHE

NO.	DESCRIPTION	AREA (SQ.M)	PERCENTAGE (%)
1	PLANTATION	100	12.19
2	ROAD	100	12.19
3	WATER	100	12.19
4	WALL	100	12.19
5	WELL	100	12.19
6	WINDMILL	100	12.19
7	WATER TOWER	100	12.19
8	WATER TOWER	100	12.19
9	WATER TOWER	100	12.19
10	WATER TOWER	100	12.19
11	WATER TOWER	100	12.19
12	WATER TOWER	100	12.19
13	WATER TOWER	100	12.19
14	WATER TOWER	100	12.19
15	WATER TOWER	100	12.19
16	WATER TOWER	100	12.19
17	WATER TOWER	100	12.19
18	WATER TOWER	100	12.19
19	WATER TOWER	100	12.19
20	WATER TOWER	100	12.19
21	WATER TOWER	100	12.19
22	WATER TOWER	100	12.19
23	WATER TOWER	100	12.19
24	WATER TOWER	100	12.19
25	WATER TOWER	100	12.19
26	WATER TOWER	100	12.19
27	WATER TOWER	100	12.19
28	WATER TOWER	100	12.19
29	WATER TOWER	100	12.19
30	WATER TOWER	100	12.19
31	WATER TOWER	100	12.19
32	WATER TOWER	100	12.19
33	WATER TOWER	100	12.19
34	WATER TOWER	100	12.19
35	WATER TOWER	100	12.19
36	WATER TOWER	100	12.19
37	WATER TOWER	100	12.19
38	WATER TOWER	100	12.19
39	WATER TOWER	100	12.19
40	WATER TOWER	100	12.19
41	WATER TOWER	100	12.19
42	WATER TOWER	100	12.19
43	WATER TOWER	100	12.19
44	WATER TOWER	100	12.19
45	WATER TOWER	100	12.19
46	WATER TOWER	100	12.19
47	WATER TOWER	100	12.19
48	WATER TOWER	100	12.19
49	WATER TOWER	100	12.19
50	WATER TOWER	100	12.19

**NURSERY SCHOOL - 02 PLOT AREA**  
 NURSERY SCHOOL - 02 PLOT AREA  
 = 815.54 SQ.MT.  
 = 0.2019 ACHE

NO.	DESCRIPTION	AREA (SQ.M)	PERCENTAGE (%)
1	PLANTATION	100	12.26
2	ROAD	100	12.26
3	WATER	100	12.26
4	WALL	100	12.26
5	WELL	100	12.26
6	WINDMILL	100	12.26
7	WATER TOWER	100	12.26
8	WATER TOWER	100	12.26
9	WATER TOWER	100	12.26
10	WATER TOWER	100	12.26
11	WATER TOWER	100	12.26
12	WATER TOWER	100	12.26
13	WATER TOWER	100	12.26
14	WATER TOWER	100	12.26
15	WATER TOWER	100	12.26
16	WATER TOWER	100	12.26
17	WATER TOWER	100	12.26
18	WATER TOWER	100	12.26
19	WATER TOWER	100	12.26
20	WATER TOWER	100	12.26
21	WATER TOWER	100	12.26
22	WATER TOWER	100	12.26
23	WATER TOWER	100	12.26
24	WATER TOWER	100	12.26
25	WATER TOWER	100	12.26
26	WATER TOWER	100	12.26
27	WATER TOWER	100	12.26
28	WATER TOWER	100	12.26
29	WATER TOWER	100	12.26
30	WATER TOWER	100	12.26
31	WATER TOWER	100	12.26
32	WATER TOWER	100	12.26
33	WATER TOWER	100	12.26
34	WATER TOWER	100	12.26
35	WATER TOWER	100	12.26
36	WATER TOWER	100	12.26
37	WATER TOWER	100	12.26
38	WATER TOWER	100	12.26
39	WATER TOWER	100	12.26
40	WATER TOWER	100	12.26
41	WATER TOWER	100	12.26
42	WATER TOWER	100	12.26
43	WATER TOWER	100	12.26
44	WATER TOWER	100	12.26
45	WATER TOWER	100	12.26
46	WATER TOWER	100	12.26
47	WATER TOWER	100	12.26
48	WATER TOWER	100	12.26
49	WATER TOWER	100	12.26
50	WATER TOWER	100	12.26



**DENSITY CALCULATION**  
 Density required = 100 TO 300 ppa  
 Total population = 100 x 37.6975 = 3769.75 persons  
 Maximum = 300 x 37.6975 = 11309.25 persons  
 PROPOSED DENSITY CALCULATION  
 No of Mean Units (1728) = 1728 - 180 x 5 = 7740 persons  
 No of Mean Dwelling units with Servant Room (80) = 80 x 7 = 560 persons  
 TOTAL POPULATION FOR PROPOSED GROUP HOUSING = 7740 + 560 = 8300 persons  
 POPULATION DENSITY ACHIEVED = 354.991 PPA

**PARKING CALCULATION**  
 TOTAL CAR PARKING RESERVED FOR EWS SHALL BE 5% OF TOTAL REQUIRED  
 Maximum Required Carpark = 2722 (84% Required)  
 Total Carpark Required = 2722 (84% Required)  
 Total Carpark Provided = 2722 (84% Required)  
 Total Carpark Shortage = 0 (0% Shortage)  
 Total Carpark Surplus = 0 (0% Surplus)

**TOTAL CAR PARKING COVERED - OPEN**  
 TOTAL CAR PARKING COVERED = 2722 (84% Required)  
 TOTAL CAR PARKING PROVIDED = 2722 (84% Required)

**TOWER AREA CALCULATIONS**

S.No.	TYPE	FAR AS PER AREA DIAGRAM IN SQ.M.	FLOOR	NO. OF TOWERS	AREA IN SQ.M.
1	FIRST FLOOR FAR AREA	471.590	1	8	3772.720
2	TYPICAL FLOOR FAR AREA	471.590	17	8	64838.080
3	TOTAL FAR AREA OF TOWER A, B & C	564.324	17	8	4514.592
4	FIRST FLOOR FAR AREA	671.414	1	6	4028.484
5	TYPICAL FLOOR FAR AREA	671.414	23	6	9255.132
6	TOTAL FAR AREA OF TOWER A, B & C (TOTAL 22 TOWERS)	1235.738	17	14	24412.146
7	GROUND FLOOR FAR AREA	346.547	1	1	346.547
8	TYPICAL FLOOR FAR AREA	346.547	7	1	2425.829
9	TOTAL FAR AREA OF EWS-01, 02 & 03	346.547	7	1	2425.829
10	TYPICAL FLOOR FAR AREA	346.547	7	1	2425.829
11	TOTAL FAR AREA OF EWS-01, 02 & 03	346.547	7	1	2425.829

**GROUND COVERAGE AREA CALCULATIONS**

S.No.	DETAILS	AREA IN SQ.M.
1	TOTAL GROUND COVERAGE OF STUCCO FLOOR	48831.378
2	TOTAL GROUND COVERAGE OF CONCRETE SHOPPING	23.035
3	TOTAL GROUND COVERAGE OF ENTRANCE PORTAL	346.547
4	TOTAL GROUND COVERAGE OF EWS TOWER 01	346.547
5	TOTAL GROUND COVERAGE OF EWS TOWER 02	346.547
6	TOTAL GROUND COVERAGE OF EWS TOWER 03	346.547
7	TOTAL GROUND COVERAGE OF POOL CHANGE ROOMS 01 & 02	812.298
8	TOTAL GROUND COVERAGE OF NURSERY SCHOOL 01	1346.645
9	TOTAL GROUND COVERAGE OF NURSERY SCHOOL 02	266.068
10	TOTAL GROUND COVERAGE OF NURSERY SCHOOL 03	277.200
11	ORGANIC WASTE CONVERTER 01	308.000
12	ORGANIC WASTE CONVERTER 02	41.544
13	TOTAL GROUND COVERAGE AREA ACHIEVED	53380.494
14	Total Permissible Ground Coverage (93% of 571875 acres)	53248.596
15	Total Achieved Ground Coverage	53248.596
16	TOTAL COVERED AREA CALCULATIONS	34.913

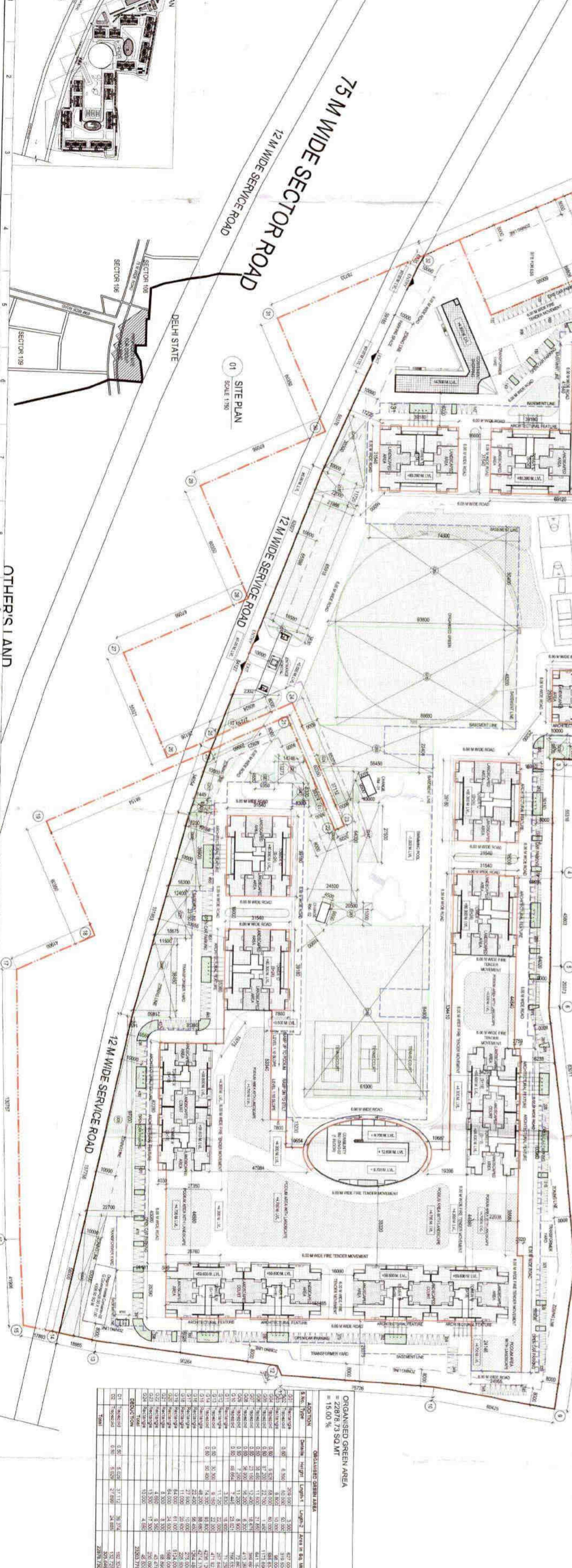
**TOTAL PERMISSIBLE FAR**  
 266580.088

**TOTAL ACHIEVED FAR**  
 266580.088

**TOTAL PERMISSIBLE GROUND COVERAGE**  
 53380.494

**TOTAL ACHIEVED GROUND COVERAGE**  
 53248.596

**NOTES**  
 1. DIMENSIONS ARE NOT TO BE SCALED.  
 2. ALL ELECTRICAL INSTALLATIONS SHALL BE PROVIDED AS PER CENTRAL GROUND WATER AUTHORITY OPERABLE.



**ORGANISED GREEN AREA**  
 = 22976.73 SQ.MT.  
 = 15.00 %

NO.	DESCRIPTION	AREA (SQ.M)	PERCENTAGE (%)
1	PLANTATION	100	0.43
2	ROAD	100	0.43
3	WATER	100	0.43
4	WALL	100	0.43
5	WELL	100	0.43
6	WINDMILL	100	0.43
7	WATER TOWER	100	0.43
8	WATER TOWER	100	0.43
9	WATER TOWER	100	0.43
10	WATER TOWER	100	0.43
11	WATER TOWER	100	0.43
12	WATER TOWER	100	0.43
13	WATER TOWER	100	0.43
14	WATER TOWER	100	0.43
15	WATER TOWER	100	0.43
16	WATER TOWER	100	0.43
17	WATER TOWER	100	0.43
18	WATER TOWER	100	0.43
19	WATER TOWER	100	0.43
20	WATER TOWER	100	0.43
21	WATER TOWER	100	0.43
22	WATER TOWER	100	0.43
23	WATER TOWER	100	0.43
24	WATER TOWER	100	0.43
25	WATER TOWER	100	0.43
26	WATER TOWER	100	0.43
27	WATER TOWER	100	0.43
28	WATER TOWER	100	0.43
29	WATER TOWER	100	0.43
30	WATER TOWER	100	0.43
31	WATER TOWER	100	0.43
32	WATER TOWER	100	0.43
33	WATER TOWER	100	0.43
34	WATER TOWER	100	0.43
35	WATER TOWER	100	0.43
36	WATER TOWER	100	0.43
37	WATER TOWER	100	0.43
38	WATER TOWER	100	0.43
39	WATER TOWER	100	0.43
40	WATER TOWER	100	0.43
41	WATER TOWER	100	0.43
42	WATER TOWER	100	0.43
43	WATER TOWER	100	0.43
44	WATER TOWER	100	0.43
45	WATER TOWER	100	0.43
46	WATER TOWER	100	0.43
47	WATER TOWER	100	0.43
48	WATER TOWER	100	0.43
49	WATER TOWER	100	0.43
50	WATER TOWER	100	0.43

**REVISIONS**

NO.	DESCRIPTION	DATE
1	ISSUED FOR PERMIT	15/08/2018
2	ISSUED FOR PERMIT	



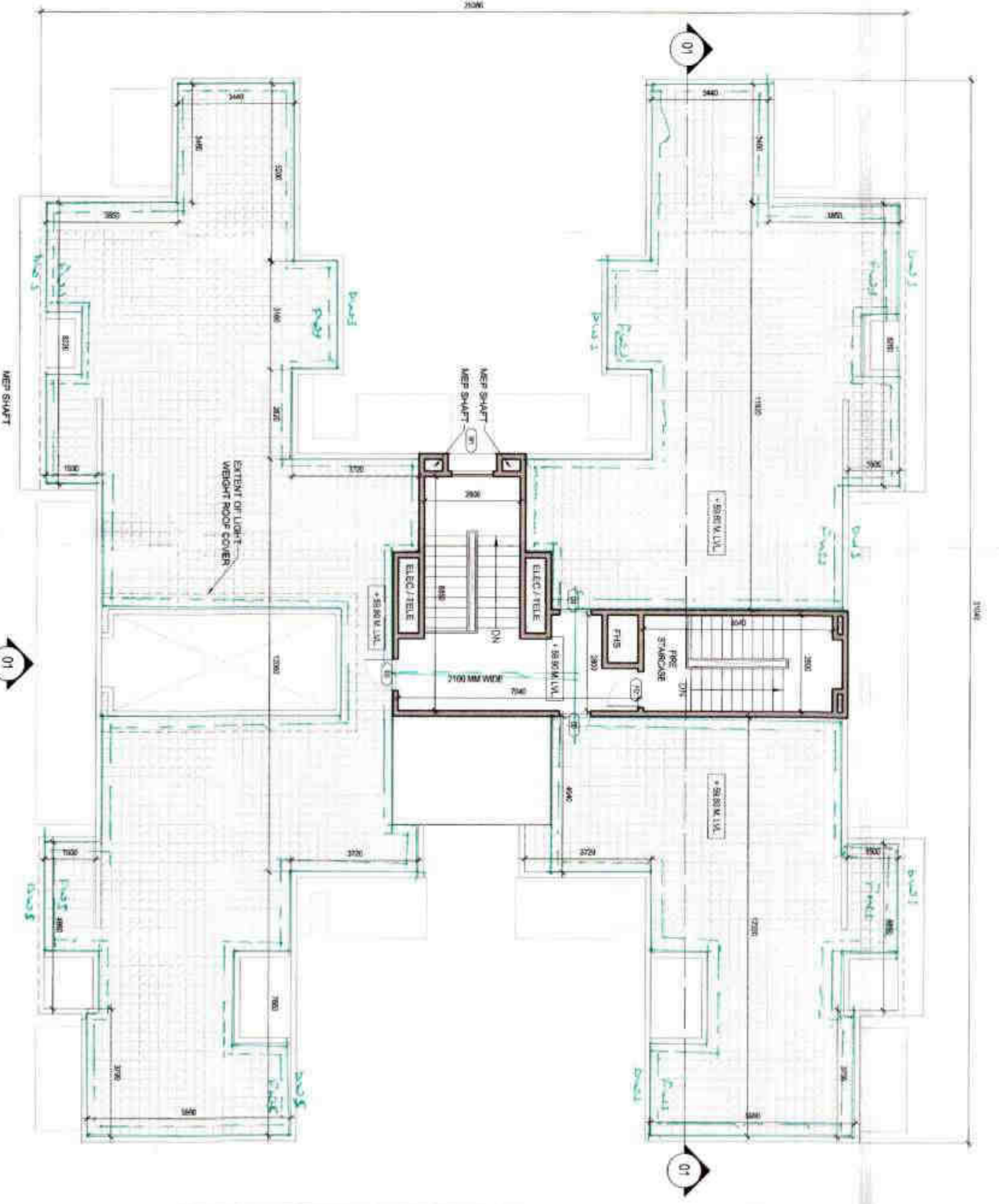




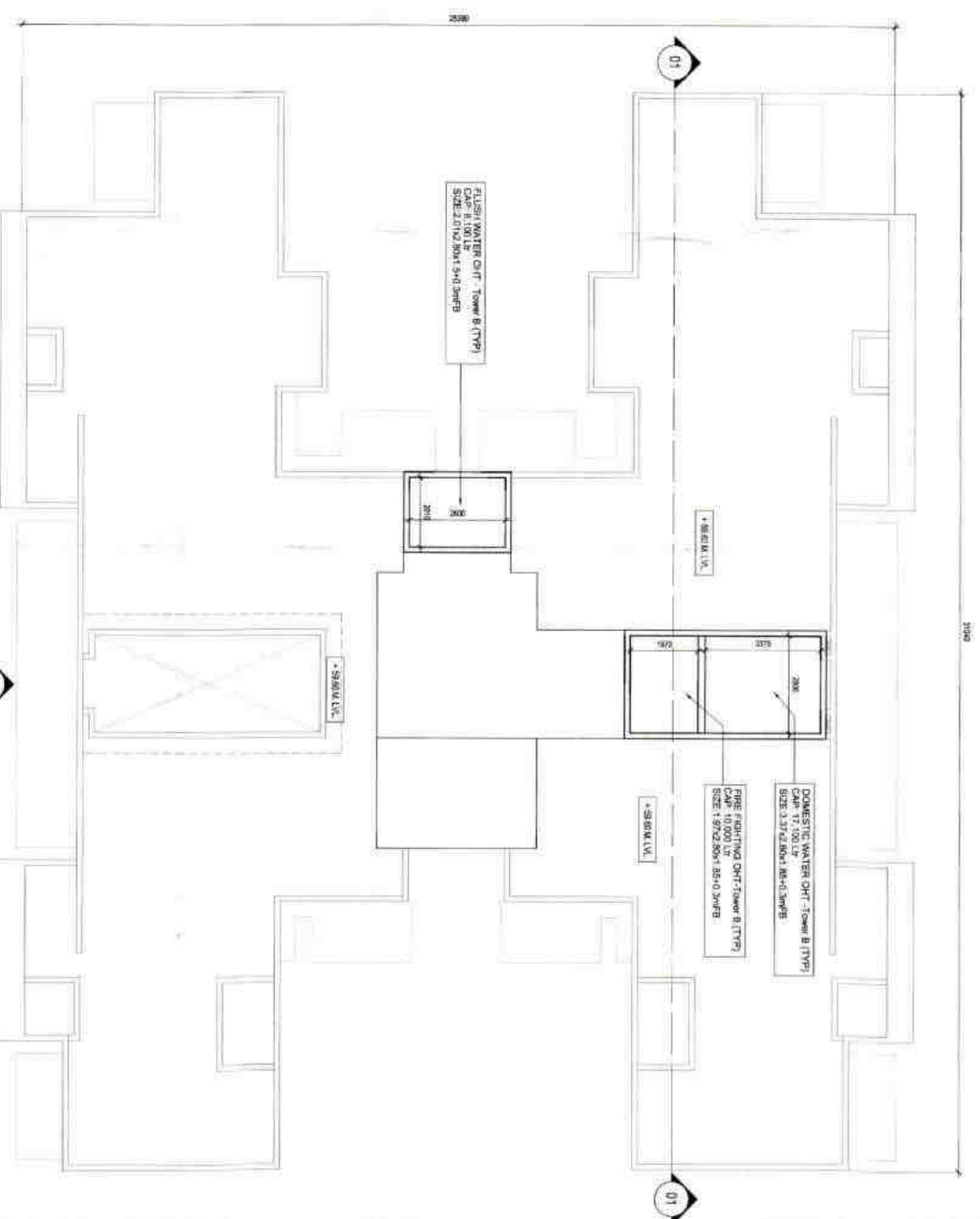




Consultant Reference: 4  
 P. 20/20/20/20  
 P. 20/20/20/20



01 TERRACE FLOOR PLAN, TOWER-A



03 O.H.T LEVEL PLAN, TOWER-A

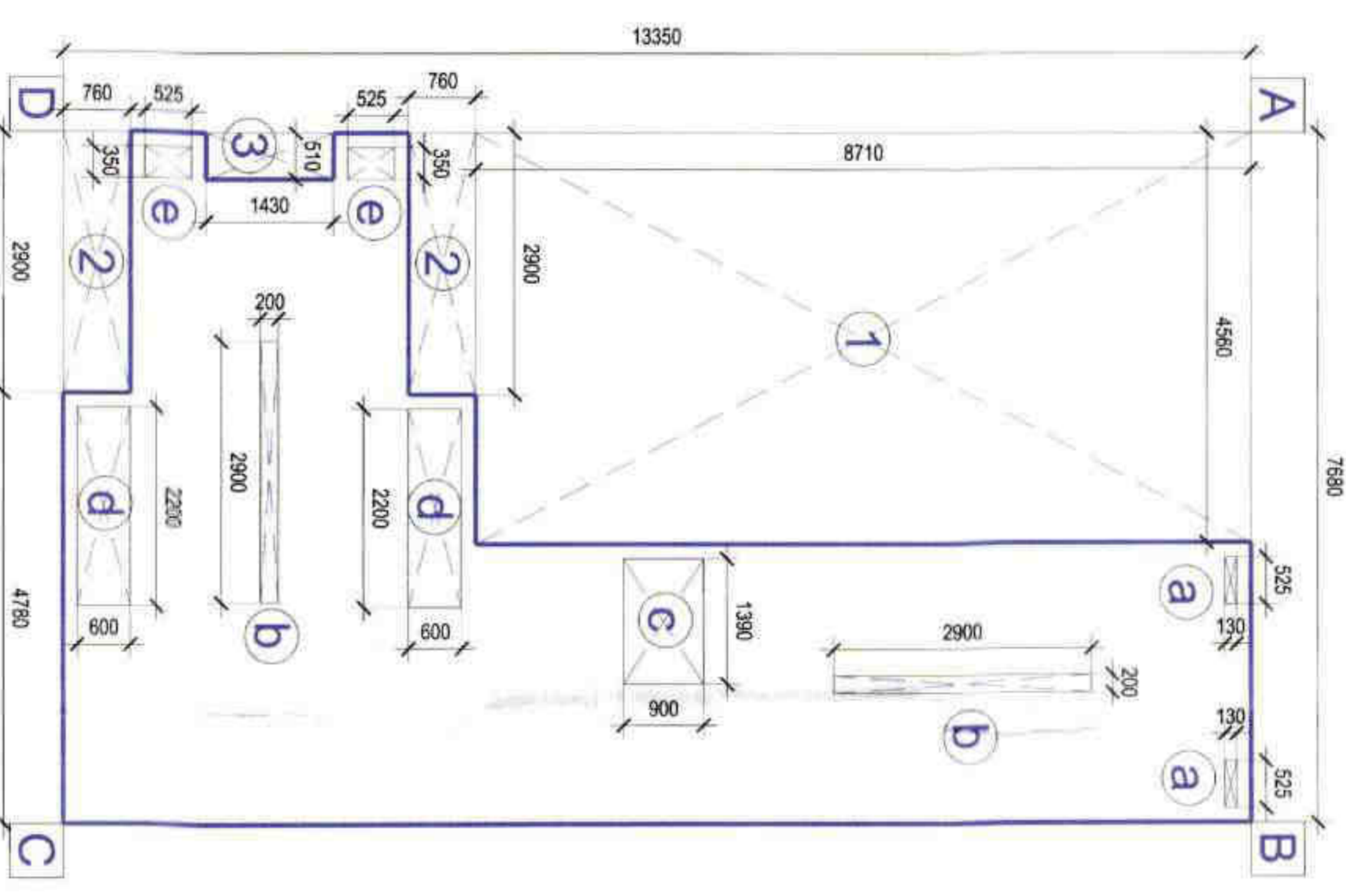
### DOOR SCHEDULE

TYPE	WIDTH	HEIGHT	LINTEL	DESCRIPTION
FD	1050	2150	2150	FIRE ESCAPE DOOR
MD	1050	2150	2150	MAIN DOOR
D1	950	2150	2150	BEDROOM DOOR
D2	850	2150	2150	TOILET DOOR
AD	850	2150	2150	UTILITY DOOR
AD1	780	2150	2150	SER. ROOM & TOI. DOOR
SD	2430	2150	2150	SLIDING DOOR
SD1	1500	2150	2150	SLIDING DOOR
SD2	1350	2150	2150	SLIDING DOOR

### WINDOW SCHEDULE

TYPE	WIDTH	HEIGHT	SILL	DESCRIPTION
SW	2130	1850	300.00	SLIDING WINDOW
SW1	1830	1850	300.00	SLIDING WINDOW
SW2	1530	1850	300.00	SLIDING WINDOW
KW	750	1000	1150.00	KITCHEN WINDOW
KW1	830	1000	1150.00	KITCHEN WINDOW
V	630	930	1220.00	TOILET
V1	750	1230	920.00	TOILET (OPENABLE)

Section:  
 1. In one corner of tower  
 2. In one corner of tower  
 3. In one corner of tower  
 4. In one corner of tower  
 5. In one corner of tower  
 6. In one corner of tower  
 7. In one corner of tower  
 8. In one corner of tower  
 9. In one corner of tower  
 10. In one corner of tower  
 11. In one corner of tower  
 12. In one corner of tower  
 13. In one corner of tower  
 14. In one corner of tower  
 15. In one corner of tower  
 16. In one corner of tower  
 17. In one corner of tower  
 18. In one corner of tower  
 19. In one corner of tower  
 20. In one corner of tower  
 21. In one corner of tower  
 22. In one corner of tower  
 23. In one corner of tower  
 24. In one corner of tower  
 25. In one corner of tower  
 26. In one corner of tower  
 27. In one corner of tower  
 28. In one corner of tower  
 29. In one corner of tower  
 30. In one corner of tower  
 31. In one corner of tower  
 32. In one corner of tower  
 33. In one corner of tower  
 34. In one corner of tower  
 35. In one corner of tower  
 36. In one corner of tower  
 37. In one corner of tower  
 38. In one corner of tower  
 39. In one corner of tower  
 40. In one corner of tower  
 41. In one corner of tower  
 42. In one corner of tower  
 43. In one corner of tower  
 44. In one corner of tower  
 45. In one corner of tower  
 46. In one corner of tower  
 47. In one corner of tower  
 48. In one corner of tower  
 49. In one corner of tower  
 50. In one corner of tower  
 51. In one corner of tower  
 52. In one corner of tower  
 53. In one corner of tower  
 54. In one corner of tower  
 55. In one corner of tower  
 56. In one corner of tower  
 57. In one corner of tower  
 58. In one corner of tower  
 59. In one corner of tower  
 60. In one corner of tower  
 61. In one corner of tower  
 62. In one corner of tower  
 63. In one corner of tower  
 64. In one corner of tower  
 65. In one corner of tower  
 66. In one corner of tower  
 67. In one corner of tower  
 68. In one corner of tower  
 69. In one corner of tower  
 70. In one corner of tower  
 71. In one corner of tower  
 72. In one corner of tower  
 73. In one corner of tower  
 74. In one corner of tower  
 75. In one corner of tower  
 76. In one corner of tower  
 77. In one corner of tower  
 78. In one corner of tower  
 79. In one corner of tower  
 80. In one corner of tower  
 81. In one corner of tower  
 82. In one corner of tower  
 83. In one corner of tower  
 84. In one corner of tower  
 85. In one corner of tower  
 86. In one corner of tower  
 87. In one corner of tower  
 88. In one corner of tower  
 89. In one corner of tower  
 90. In one corner of tower  
 91. In one corner of tower  
 92. In one corner of tower  
 93. In one corner of tower  
 94. In one corner of tower  
 95. In one corner of tower  
 96. In one corner of tower  
 97. In one corner of tower  
 98. In one corner of tower  
 99. In one corner of tower  
 100. In one corner of tower

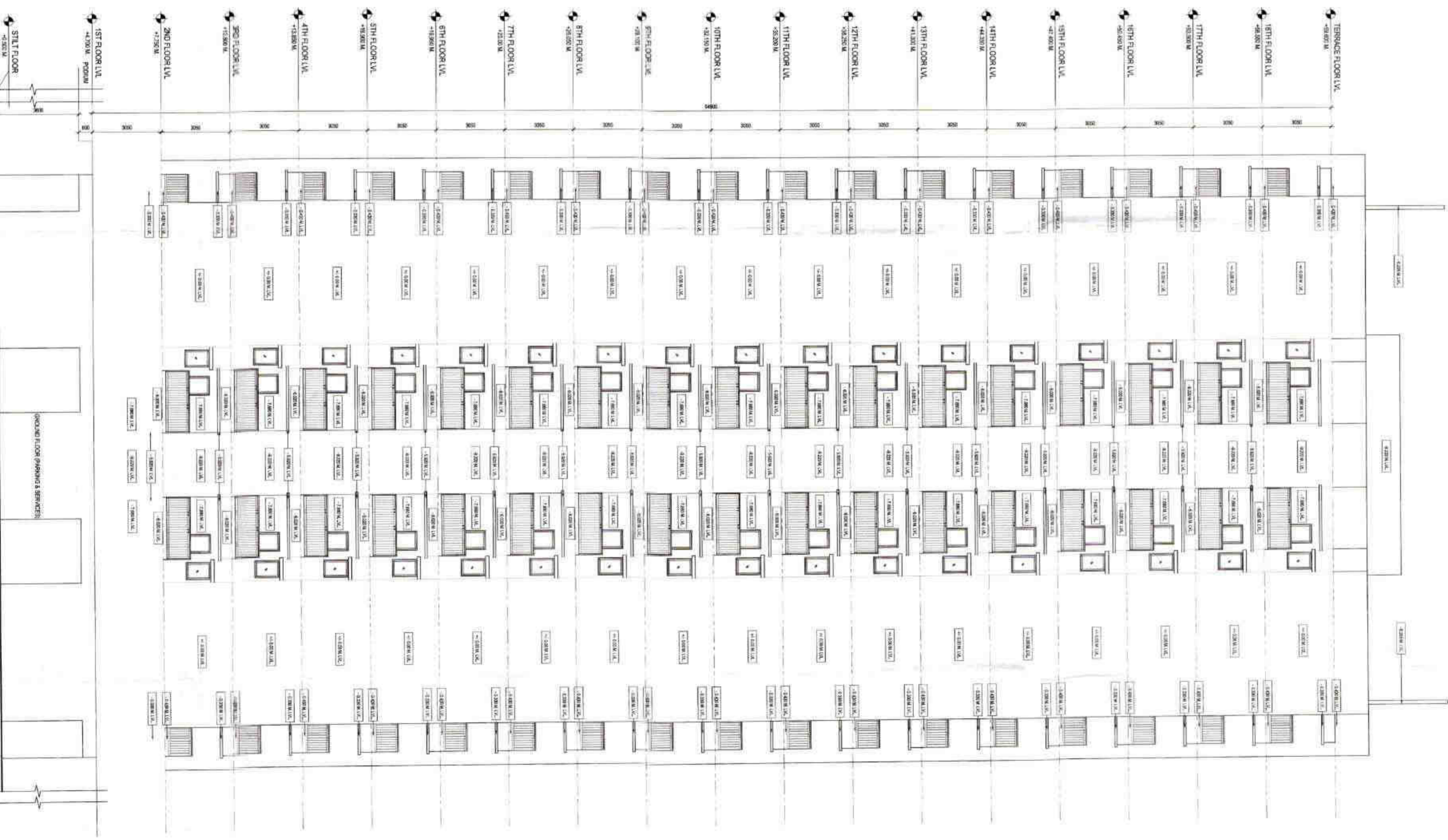
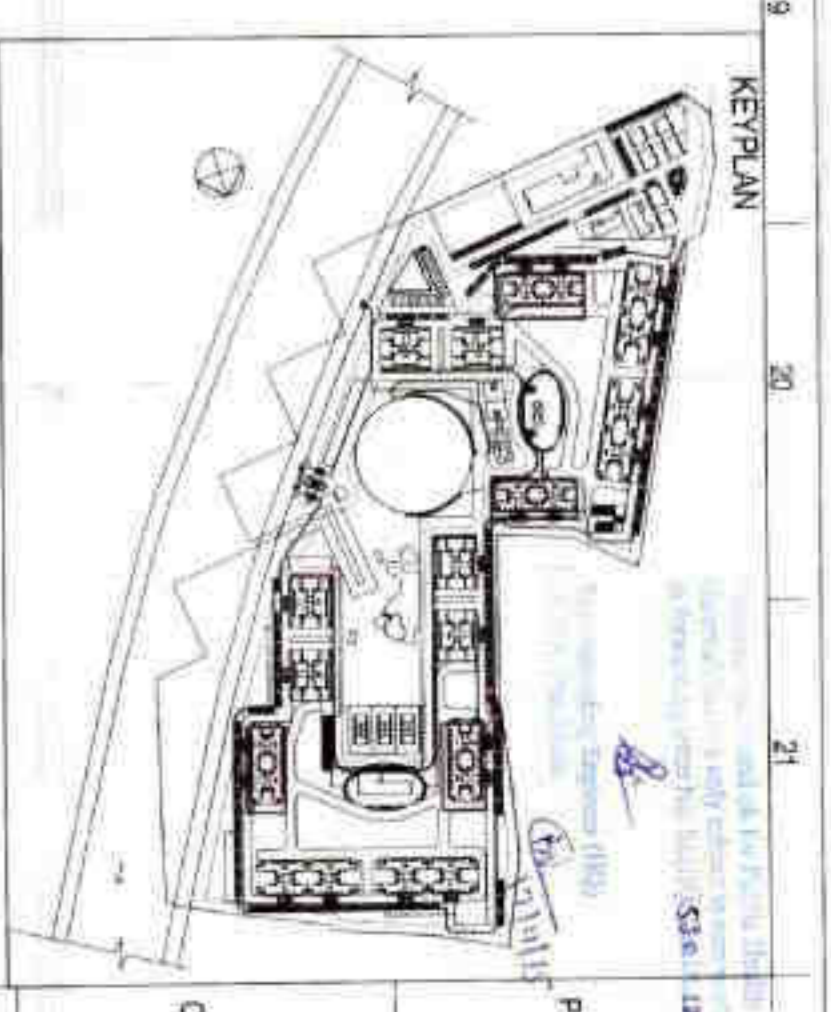


02 TERRACE FLOOR COVERED AREA DIAGRAM, TOWER-A  
 SCALE: 1:50

### TYPE A - TERRACE COVERED AREA CALCULATIONS

S.NO	TYPE	PARTICULARS	No's	L (IN MT.)	W (IN MT.)	AREA (IN SQ.MT.)
A	Rectangle	ABCD	1	7.68	13.35	102.528
B	Deductions					
			1	4.56	8.71	39.718
			2	2.9	0.76	4.408
			3	1	0.51	0.729
						44.855
C	A-B					57.673
D	Deductions (Cut Outs)					
		a	2	0.525	0.13	0.137
		b	2	0.2	2.9	1.160
		c	1	1.39	0.9	1.251
		d	2	2.2	0.6	2.640
		e	2	0.35	0.525	0.368
						5.555
E	TOTAL COVERED AREA	C-D				52.118

02 TERRACE FLOOR COVERED AREA CALCULATION, TOWER-A  
 SCALE: 1:50



02 TOWER A - ELEVATION (2/PHS)  
 SCALE: 1:50

150 OFFICE (B) ONLY

ARCHITECTS: SOBHA LIMITED

ENGINEER: CHENITHA INNOVATIVE LIMITED

DATE: 15/05/2024

PROJECT: TERRACE FLOOR PLAN & O.H.T LEVEL PLAN AND AREA DIAGRAM (TOWER-A)

SCALE: 1:50

AS-108

REVISIONS:

NO. | DATE | BY | REASON

1 | 15/05/2024 | AS | INITIAL DESIGN

2 | 15/05/2024 | AS | CORRECTIONS

3 | 15/05/2024 | AS | FINAL DESIGN

4 | 15/05/2024 | AS | APPROVAL

5 | 15/05/2024 | AS | APPROVAL

6 | 15/05/2024 | AS | APPROVAL

7 | 15/05/2024 | AS | APPROVAL

8 | 15/05/2024 | AS | APPROVAL

9 | 15/05/2024 | AS | APPROVAL

10 | 15/05/2024 | AS | APPROVAL

11 | 15/05/2024 | AS | APPROVAL

12 | 15/05/2024 | AS | APPROVAL

13 | 15/05/2024 | AS | APPROVAL

14 | 15/05/2024 | AS | APPROVAL

15 | 15/05/2024 | AS | APPROVAL

16 | 15/05/2024 | AS | APPROVAL

17 | 15/05/2024 | AS | APPROVAL

18 | 15/05/2024 | AS | APPROVAL

19 | 15/05/2024 | AS | APPROVAL

20 | 15/05/2024 | AS | APPROVAL

21 | 15/05/2024 | AS | APPROVAL

22 | 15/05/2024 | AS | APPROVAL

23 | 15/05/2024 | AS | APPROVAL

24 | 15/05/2024 | AS | APPROVAL

25 | 15/05/2024 | AS | APPROVAL

26 | 15/05/2024 | AS | APPROVAL

27 | 15/05/2024 | AS | APPROVAL

28 | 15/05/2024 | AS | APPROVAL

29 | 15/05/2024 | AS | APPROVAL

30 | 15/05/2024 | AS | APPROVAL

31 | 15/05/2024 | AS | APPROVAL

32 | 15/05/2024 | AS | APPROVAL

33 | 15/05/2024 | AS | APPROVAL

34 | 15/05/2024 | AS | APPROVAL

35 | 15/05/2024 | AS | APPROVAL

36 | 15/05/2024 | AS | APPROVAL

37 | 15/05/2024 | AS | APPROVAL

38 | 15/05/2024 | AS | APPROVAL

39 | 15/05/2024 | AS | APPROVAL

40 | 15/05/2024 | AS | APPROVAL

41 | 15/05/2024 | AS | APPROVAL

42 | 15/05/2024 | AS | APPROVAL

43 | 15/05/2024 | AS | APPROVAL

44 | 15/05/2024 | AS | APPROVAL

45 | 15/05/2024 | AS | APPROVAL

46 | 15/05/2024 | AS | APPROVAL

47 | 15/05/2024 | AS | APPROVAL

48 | 15/05/2024 | AS | APPROVAL

49 | 15/05/2024 | AS | APPROVAL

50 | 15/05/2024 | AS | APPROVAL

51 | 15/05/2024 | AS | APPROVAL

52 | 15/05/2024 | AS | APPROVAL

53 | 15/05/2024 | AS | APPROVAL

54 | 15/05/2024 | AS | APPROVAL

55 | 15/05/2024 | AS | APPROVAL

56 | 15/05/2024 | AS | APPROVAL

57 | 15/05/2024 | AS | APPROVAL

58 | 15/05/2024 | AS | APPROVAL

59 | 15/05/2024 | AS | APPROVAL

60 | 15/05/2024 | AS | APPROVAL

61 | 15/05/2024 | AS | APPROVAL

62 | 15/05/2024 | AS | APPROVAL

63 | 15/05/2024 | AS | APPROVAL

64 | 15/05/2024 | AS | APPROVAL

65 | 15/05/2024 | AS | APPROVAL

66 | 15/05/2024 | AS | APPROVAL

67 | 15/05/2024 | AS | APPROVAL

68 | 15/05/2024 | AS | APPROVAL

69 | 15/05/2024 | AS | APPROVAL

70 | 15/05/2024 | AS | APPROVAL

71 | 15/05/2024 | AS | APPROVAL

72 | 15/05/2024 | AS | APPROVAL

73 | 15/05/2024 | AS | APPROVAL

74 | 15/05/2024 | AS | APPROVAL

75 | 15/05/2024 | AS | APPROVAL

76 | 15/05/2024 | AS | APPROVAL

77 | 15/05/2024 | AS | APPROVAL

78 | 15/05/2024 | AS | APPROVAL

79 | 15/05/2024 | AS | APPROVAL

80 | 15/05/2024 | AS | APPROVAL

81 | 15/05/2024 | AS | APPROVAL

82 | 15/05/2024 | AS | APPROVAL

83 | 15/05/2024 | AS | APPROVAL

84 | 15/05/2024 | AS | APPROVAL

85 | 15/05/2024 | AS | APPROVAL

86 | 15/05/2024 | AS | APPROVAL

87 | 15/05/2024 | AS | APPROVAL

88 | 15/05/2024 | AS | APPROVAL

89 | 15/05/2024 | AS | APPROVAL

90 | 15/05/2024 | AS | APPROVAL

91 | 15/05/2024 | AS | APPROVAL

92 | 15/05/2024 | AS | APPROVAL

93 | 15/05/2024 | AS | APPROVAL

94 | 15/05/2024 | AS | APPROVAL

95 | 15/05/2024 | AS | APPROVAL

96 | 15/05/2024 | AS | APPROVAL

97 | 15/05/2024 | AS | APPROVAL

98 | 15/05/2024 | AS | APPROVAL

99 | 15/05/2024 | AS | APPROVAL

100 | 15/05/2024 | AS | APPROVAL











