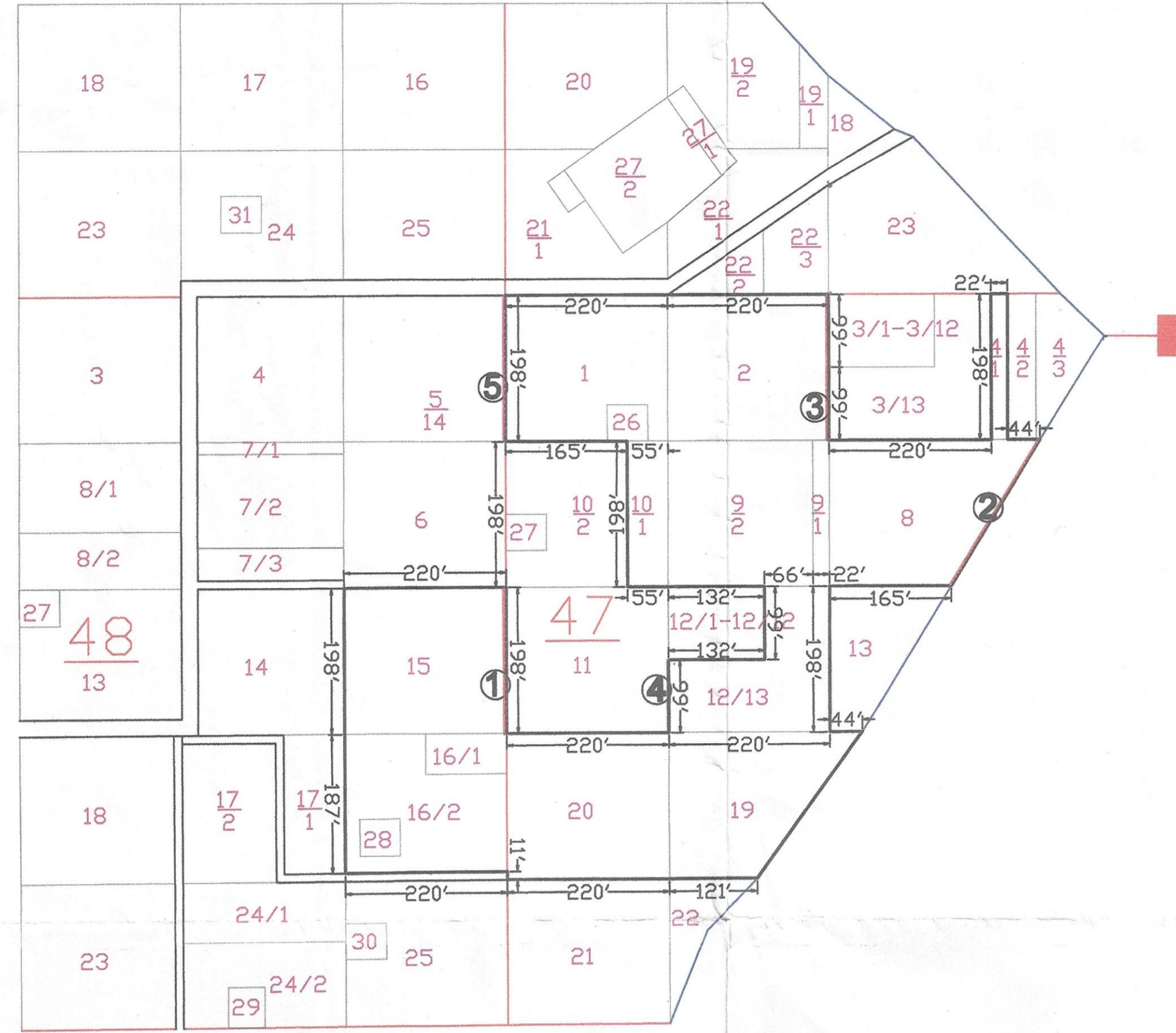


DEMARCATIION MAP OF VILLAGE DAULATABAD TEHSIL GURGAON.



AREA STATEMENT FOR ENCHROACHMENT PENALTY AREA								
S.No.	Mustkeel No.	Killa No.	LAND OWNER	Enchroachment name in Position	Description	Area in sq. Feet	Area in sq. Yds	Shown in Drg.
①	48	15				693	77	
②	47	8				467	51.88	
③	47	2				575	63.88	

AREA STATEMENT FOR ENCHROACHMENT DEPENDENT AREA								
S.No.	Mustkeel No.	Killa No.	LAND OWNER	Enchroachment name in Position	Description	Area in sq. Feet	Area in sq. Yds	Shown in Drg.
④	47	12/13			Fencing	152	16.88	
⑤	47	11			Boundary Wall	567	63	



- Notes:-**
- All dimensions are in Feet unless otherwise mentioned, where as dimensions in killa block are mentioned in karam for the reference purpose only.
 - The revenue unit - 1 Karam = 5'-6"= 1.676 Metres.
 - Least count unit for revenue measurement is 1 Karam = 5'-6"= 1.676M.
 - Do not scale the drawing if in doubt please ask!
 - Sizra dimensions are followed & matched from field book and masavi.
 - This drawing is to be read in conjunction with drawing no. - Sizara Map Daulatabad.

Demarcation Report :-

1. Demarcation for the Mustkeel No. 47, Killa No. 1,2,3,8,10,11,19,20,26, Mustkeel No. 48, Killa No. 15,16,28, Village Daulatabad tahsil Gurgaon has been done by the orders of Revenue officer - T.S.M/ D.G.P.S (RTK).

2. For the demarcation of the above said mustkeel numbers/khasra numbers the process has been adopted is mentioned below:-

3. By the orders of Revenue officer - our survey team reached at site with all required survey equipments T.S.M/D.G.P.S(R.T.K) Measuring tape on 09 November 2017 at 10 A.M at site Daulatabad Village Gurgaon.

4. The photo copies of Sijra Map, field book required for demarcation were provided by the revenue officials in the presence of Villagers.

5. At 11.00 A.M our team started the survey of the site with T.S.M/ D.G.P.S(R.T.K) in the presence of revenue officials, village staff for mutually agreed reference points were fixed and shown to every one by the revenue officials as mentioned below-

- 5.1 RF-1- Mustkeel No 37, Killa No 21 South West corner Mustkeel stone.
- 5.2 RF-2- Mustkeel No 38, Killa No 21 South West corner Mustkeel stone.
- 5.3 RF-3- Mustkeel No 52, Killa No 1 North West corner Mustkeel stone.
- 5.4 RF-4- Mustkeel No 48, Killa No 21 South West corner Mustkeel stone.

6. Three control points were fixed with D.G.P.S (R.T.K) to set the global references and to get accuracy and thereafter cadastral survey was carried out by picking references point fixed by revenue officials.

7. The "survey data" was then transferred from T.S.M/ D.G.P.S(R.T.K) on computers in "Auto Plotter" format (a software to prepare the survey drawing) and the survey drawing was then converted in AUTO-CAD format.

8. The Sijra Map received from revenue official was scanned on high resolution scanner and then digitized in AUTO-CAD format referring each side of individual Khasra (E,W,N,S) dimensions from field book (provided by the revenue official and then converted the digitized drawing in the block or one identity).

9. Sijra block was checked and verified by the revenue officials.

10. Thereafter Survey drawing was superimposed on Digitized Sijra block aligning with the reference points fixed by revenue officials and on google earth part plan of Daulatabad village (area taken for image as Surveyed area).

11. The required killa Nos. were highlighted The corners of required khasra nos. were marked on the drawing as ,marked.

12. Thereafter the co-ordinates of required points for the demarcation was computed on computers and transferred on D.G.P.S(R.T.K) for ground tootching to complete the demarcation .

13. With the prior permission of the revenue officials ground tootching at site was done on 09 November 2017 in the presence of revenue officials and Villagers.

14. The demarcation at site was completed no. resistance was faced during ground tootching demarcation and final report is submitted herewith.

Legend:

S No.	Feature Type	Symbol
1.		Killa Line
2.		Mustkeel Line
3.	20	Killa Number
4.	25	Mustkeel Number
5.		Land Outer Line
6.		Village Boundary
7.		Enchroachment Penalty
8.		Enchroachment Dependent

Project:-

**TEHSILDAR GURGAON
DEMARCATIION WITH TSM/DGPS**

Drawing Title:- **Demarcation Plan/ Report**

Demarcation consultant:- **Reikan Engineering Consultant Pvt.Ltd**

Office No. 2, Opp. HUDA Office
Old Delhi Road, Sector-14
Gurgaon, Haryana- 122001
Phone- 0124-4010775, 7290018472,73

Signature with Seal:

Surveyed By	Sarju Kumar	Drawn By	Vikram Yadav	Scale:-	1:1	North
Checked By		Approved By				
Comm. On	09-11-2017	Feat. Year	2017-18			
Completed On	09-11-2017	Sheet Size	A1			

Drawing No:- Sheet No- 1 of 1

Revision No. R0