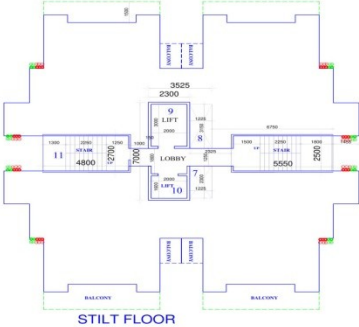
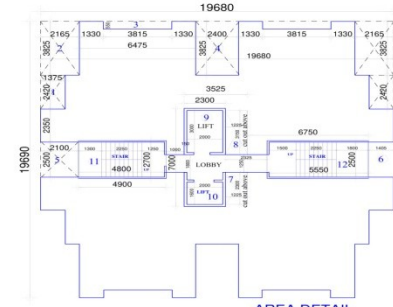


TYPICAL FLOOR PLAN  
Applicable on Tower - 1 to 12



STILT FLOOR



AREA DETAIL

3-BHK		
<b>AREA DETAIL</b>		
TOTAL COVERED AREA ON STILT FLOOR (EACH TOWER)		
or	A = 387.490 x 61.993	= 23,910
B, side wall	2.300 x 0.990 x 2	= 4,590
Total of 1 to 12		28,500
<b>COMMON AREA DETAIL</b>		
Lift	2.300 x 7.000	= 16,100
Stair	2.300 x 2.300	= 5,290
Total		21,390
<b>TOTAL F.A.R. AREA ON TYPICAL FLOOR, 1st to 14th Floor</b>		
or	A = 387.490 x 123.740	= 47,840
B	2.300 x 2.300	= 5,290
1	1.375 x 2.400 x 4	= 13,300
2	2.140 x 3.800 x 4	= 32,608
3	2.400 x 3.800 x 4	= 36,480
4	2.300 x 2.000 x 2	= 9,200
5	1.400 x 2.000	= 2,800
6	1.400 x 2.000	= 2,800
7	1.225 x 2.000 cut-out	= 2,450
8	1.225 x 1.500 cut-out	= 1,838
9	2.000 x 1.000 Lift	= 2,000
10	2.000 x 1.000 Lift	= 2,000
11	4.800 x 1.000 C/L	= 4,800
12	5.500 x 2.000 F.S.	= 11,000
Total of 1 to 12		123,750
<b>TOTAL F.A.R. AREA OF TOWER 3 BHK "A"</b>		
GROUND/STILT F.A.R.	5/14	23,910
TYPICAL FLOOR (1st to 14th Floor)	5/14	263,750
Total		287,660
<b>TOTAL F.A.R. AREA OF TOWER 3 BHK "B"</b>		
GROUND/STILT F.A.R.	5/14	21,390
TYPICAL FLOOR (1st to 14th Floor)	5/14	263,750
Total		285,140
<b>TOTAL F.A.R. AREA OF TOWER 3 BHK "C"</b>		
GROUND/STILT F.A.R.	5/14	23,910
TYPICAL FLOOR (1st to 14th Floor)	5/14	263,750
Total		287,660
<b>TOTAL F.A.R. AREA OF TOWER 3 BHK "D"</b>		
GROUND/STILT F.A.R.	5/14	21,390
TYPICAL FLOOR (1st to 14th Floor)	5/14	263,750
Total		285,140
<b>TOTAL F.A.R. AREA OF TOWER 3 BHK "E"</b>		
GROUND/STILT F.A.R.	5/14	23,910
TYPICAL FLOOR (1st to 14th Floor)	5/14	263,750
Total		287,660

SYMBOL	DESCRIPTION
(Symbol)	SOIL PROFILE
(Symbol)	WATER TABLE
(Symbol)	FOUNDATION
(Symbol)	GROUND WATER
(Symbol)	WATER SUPPLY
(Symbol)	SEWERAGE
(Symbol)	RAINFALL
(Symbol)	WIND DIRECTION
(Symbol)	WIND VELOCITY
(Symbol)	WIND BLOWING FREQUENCY
(Symbol)	WIND BLOWING PERCENTAGE
(Symbol)	WIND BLOWING DIRECTION
(Symbol)	WIND BLOWING VELOCITY
(Symbol)	WIND BLOWING PERCENTAGE
(Symbol)	WIND BLOWING DIRECTION
(Symbol)	WIND BLOWING VELOCITY

**3 BHK - UNIT PLAN**

ARCHITECT: PLANNERS CLUB  
 AUTH. SIGNATORY/OWNER: MS. S3 INFRABUILD LLP.

GROUP HOUSING SECTOR - 85, FARIDABAD  
 MA. S3 INFRABUILD LLP.  
 IN COLLABORATION WITH: MS. S3 INFRABUILD LLP.

PROVIDED BUILDING PLAN IS AN AFFORDABLE GROUP HOUSING SCHEME MEANS BEING 5.1875 Acc. (Clause No. 17a of 2019 IN SECTOR - 85, FARIDABAD. IN COLLABORATION WITH: MS. S3 INFRABUILD LLP.

**TOTAL CARPET AREA OF UNIT - 3 BHK "A"**

A = (1 to 8)

1	1.425 x 2.400	= 3.45
2	2.215 x 3.800	= 8.48
3	1.220 x 0.555 x 2	= 1.35
4	1.375 x 0.455	= 0.72
5	1.200 x 3.700	= 4.70
6	0.560 x 0.100	= 0.06
7	1.800 x 3.300	= 5.94
8	6.950 x 1.000	= 6.95
Total of 1 to 8		31.65

**Unit Plan - 3 BHK "A"**

**TOTAL CARPET AREA OF UNIT - 3 BHK "B"**

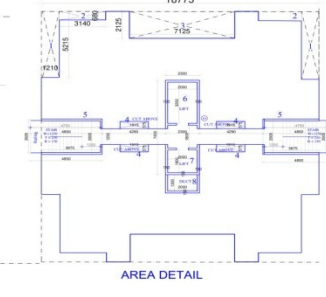
A = (1 to 8)

1	1.425 x 2.400	= 3.45
2	2.215 x 3.800	= 8.48
3	1.220 x 0.555 x 2	= 1.35
4	1.375 x 0.455	= 0.72
5	1.200 x 3.700	= 4.70
6	0.560 x 0.100	= 0.06
7	1.800 x 3.300	= 5.94
8	6.950 x 1.000	= 6.95
Total of 1 to 8		31.65

Unit Plan - 3 BHK "B"



TYPICAL FLOOR PLAN  
Tower - 14, (1st to 14th)



AREA DETAIL

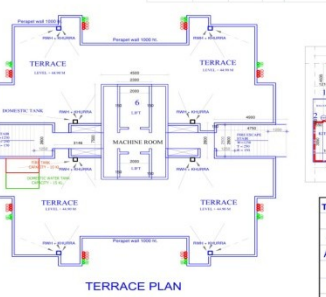
1-BHK		
<b>AREA DETAIL</b>		
TOTAL COVERED AREA ON STILT/GROUND FLOOR (TOWER - 14)		
or	A = 310 x 3	= 930
B	18.775 x 19.480	= 365.737
C, Stair	0.975 x 2.700 x 2	= 5.295
2	3.140 x 0.680 x 4	= 8,592
3	2.125 x 0.680 x 4	= 5,790
Total of 1 to 3		64.063
<b>TOTAL F.A.R. AREA ON STILT/GROUND FLOOR</b>		
or	A = 310 x 7	= 2,170
B	18.775 x 19.480	= 365.737
1	1.250 x 2.215 x 4	= 11,140
2	3.140 x 0.680 x 4	= 8,592
3	7.125 x 2.125 x 2	= 30,281
4	1.955 x 0.575 x 4	= 4,485
5	3.875 x 2.600 STAIR x 2	= 20,150
6	2.000 x 3.250 Lift	= 6,500
7	2.000 x 1.800 Lift	= 3,600
8	2.000 x 1.300 duct	= 2,600
Total		101,317
<b>TOTAL F.A.R. AREA OF TOWER - 14</b>		
GROUND/STILT F.A.R.	5/14	234,937
TYPICAL FLOOR (1st to 14th Floor)	5/14	264,420
Total		499,357

**MUMTY & MACHINE ROOM = 61.190**

4.50 X 7.50 = 33.750  
 4.90 X 2.80 x 2 = 27.440  
 Total = 61.190



STILT/GROUND FLOOR PLAN



TERRACE PLAN

**TOTAL CARPET AREA OF UNIT - 1 BHK "B"**

A = (1 to 6)

1	3.620 x 2.025	= 7.33
2	0.640 x 0.100	= 0.06
3	1.085 x 0.100	= 0.11
4	1.113 x 3.800	= 4.23
5	2.190 x 0.725	= 1.59
6	0.650 x 3.625	= 2.36
Total		15.68

**Unit Plan - 1 BHK "B"**

**TOTAL CARPET AREA OF UNIT - 1 BHK "A"**

A = (1 to 5)

1	1.210 x 4.535	= 5.49
2	0.550 x 0.100	= 0.06
3	2.140 x 0.100	= 0.21
4	0.650 x 4.810	= 3.13
5	3.850 x 0.750	= 2.89
Total of 1 to 5		11.77

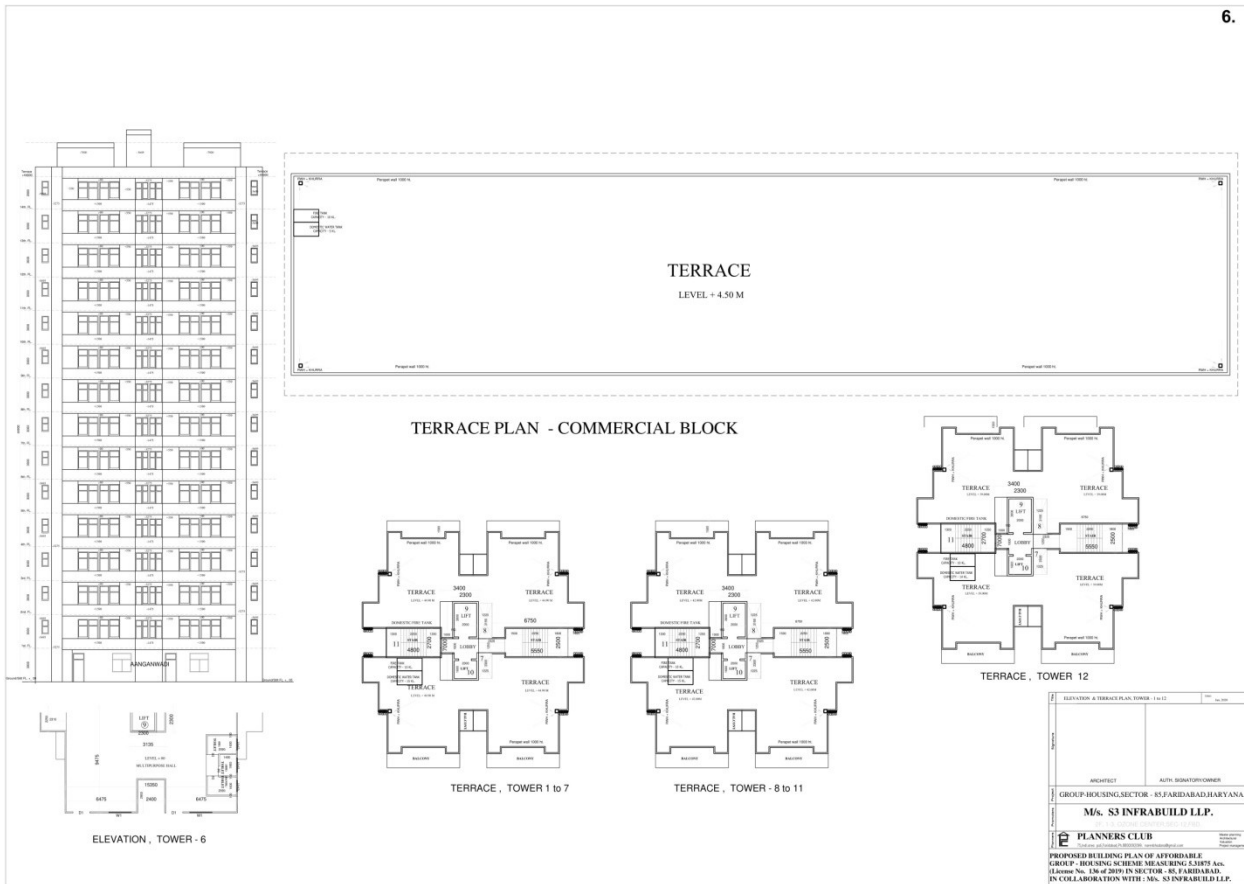
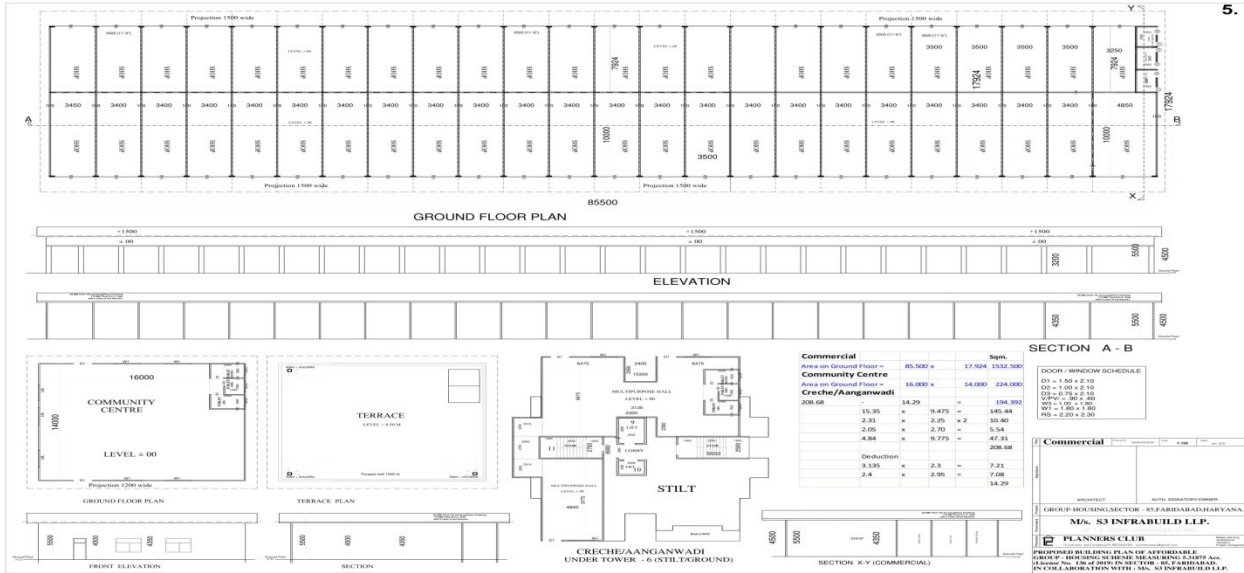
SYMBOL	DESCRIPTION
(Symbol)	SOIL PROFILE
(Symbol)	WATER TABLE
(Symbol)	FOUNDATION
(Symbol)	GROUND WATER
(Symbol)	WATER SUPPLY
(Symbol)	SEWERAGE
(Symbol)	RAINFALL
(Symbol)	WIND DIRECTION
(Symbol)	WIND VELOCITY
(Symbol)	WIND BLOWING FREQUENCY
(Symbol)	WIND BLOWING PERCENTAGE
(Symbol)	WIND BLOWING DIRECTION
(Symbol)	WIND BLOWING VELOCITY

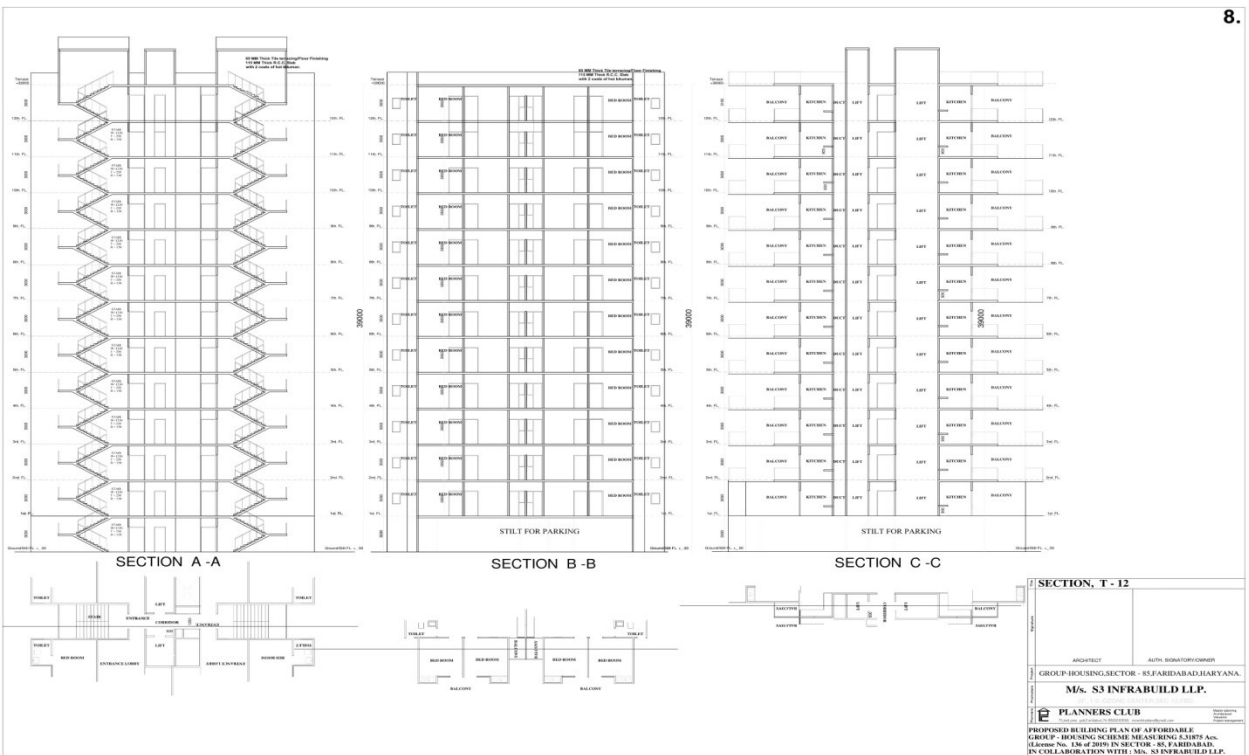
**1 BHK - UNIT PLAN**

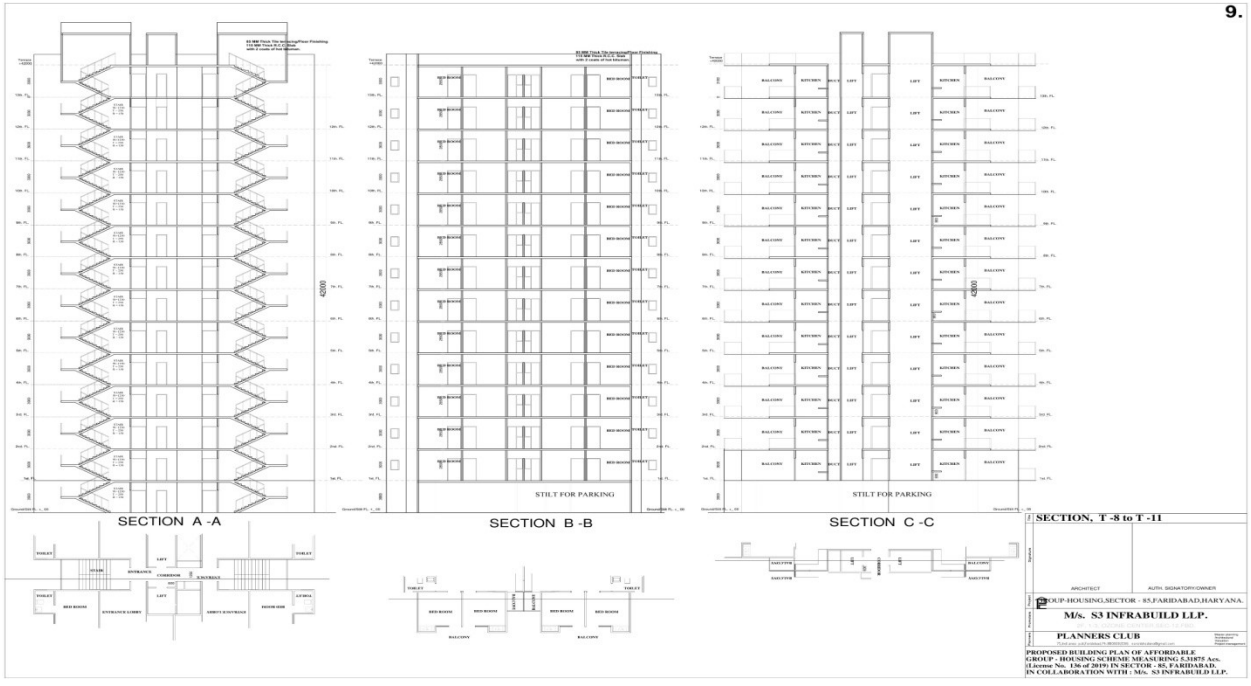
ARCHITECT: PLANNERS CLUB  
 AUTH. SIGNATORY/OWNER: MS. S3 INFRABUILD LLP.

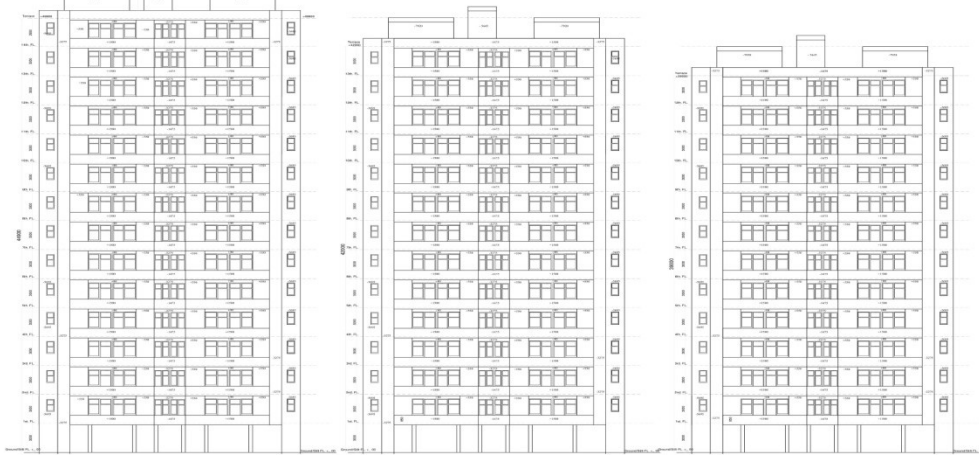
GROUP HOUSING SECTOR - 85, FARIDABAD/HARYANA  
 MS. S3 INFRABUILD LLP.  
 IN COLLABORATION WITH: MS. S3 INFRABUILD LLP.

PROVIDED BUILDING PLAN IS AN AFFORDABLE GROUP HOUSING SCHEME MEANS BEING 5.1875 Acc. (Clause No. 17a of 2019 IN SECTOR - 85, FARIDABAD. IN COLLABORATION WITH: MS. S3 INFRABUILD LLP.









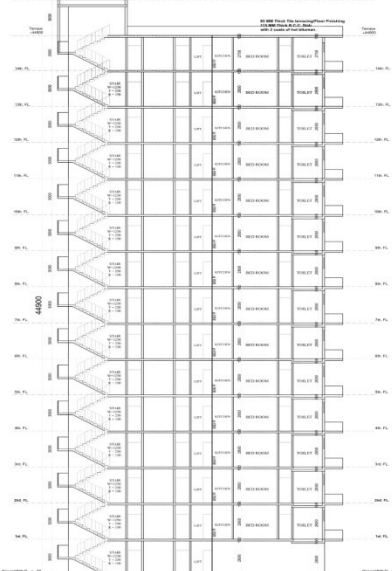
ELEVATION , TOWER 1 to 7

ELEVATION , TOWER 8 to 11

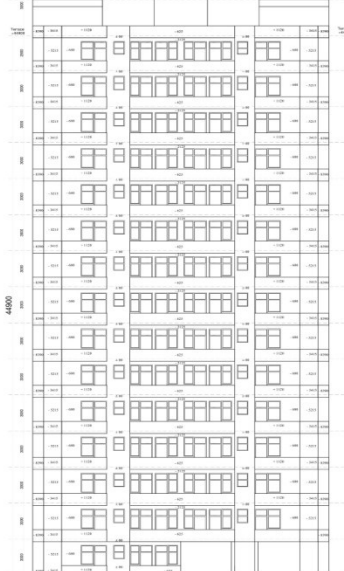
ELEVATION , TOWER 12



SECTION ELEVATION - TOWER 12	
ARCHITECT	ALPHA DESIGNATORY/OWNER
GROUP-HOUSING SECTOR - 85 FARDABAD HARYANA	
Ms. S3 INFRABUILD LLP.	
PLANNERS CLUB	
PROPOSED BUILDING PLAN OF AFFORDABLE GROUP - HOUSING SCHEME BEARING LADIES AD. (Elevation No. 136 of 2019 IN SECTOR - 85, FARDABAD IN COLLABORATION WITH: MS. S3 INFRABUILD LLP.	



SECTION X - Y



FRONT ELEVATION



SECTION ELEVATION - TOWER 12	
ARCHITECT	ALPHA DESIGNATORY/OWNER
GROUP-HOUSING SECTOR - 85 FARDABAD HARYANA	
Ms. S3 INFRABUILD LLP.	
PLANNERS CLUB	
PROPOSED BUILDING PLAN OF AFFORDABLE GROUP - HOUSING SCHEME BEARING LADIES AD. (Elevation No. 136 of 2019 IN SECTOR - 85, FARDABAD IN COLLABORATION WITH: MS. S3 INFRABUILD LLP.	

